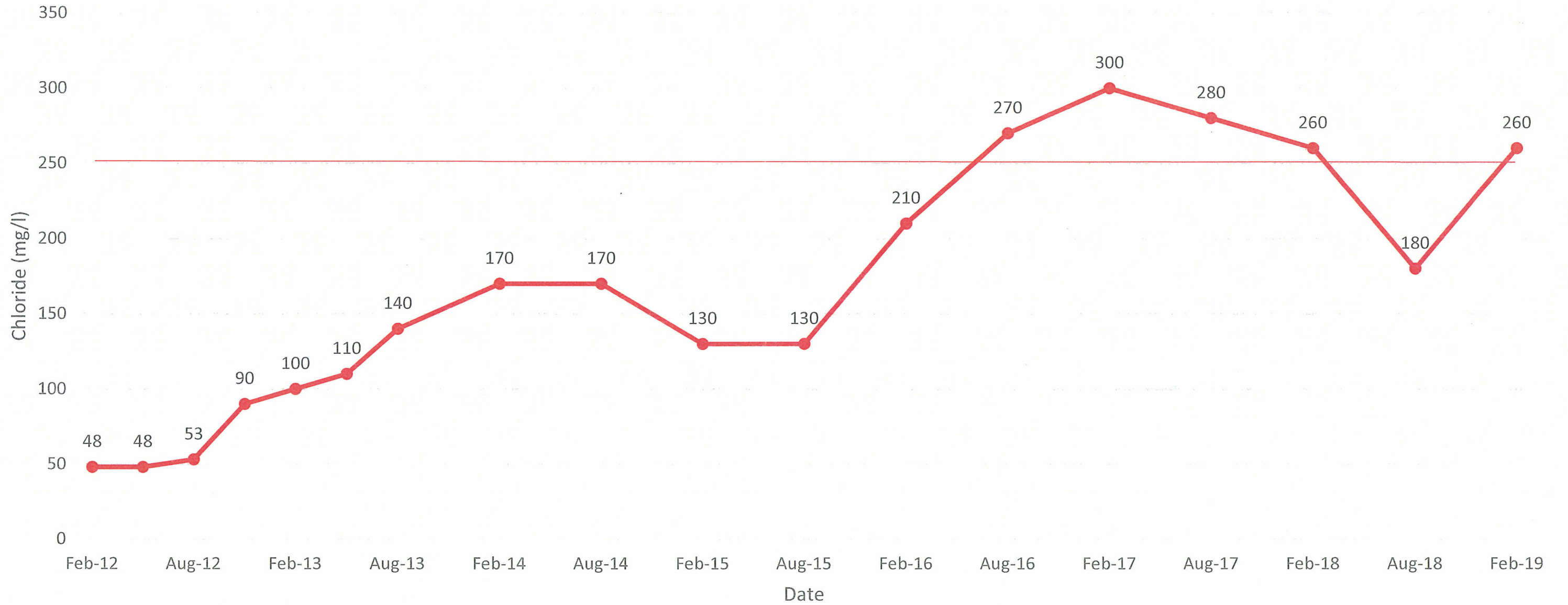
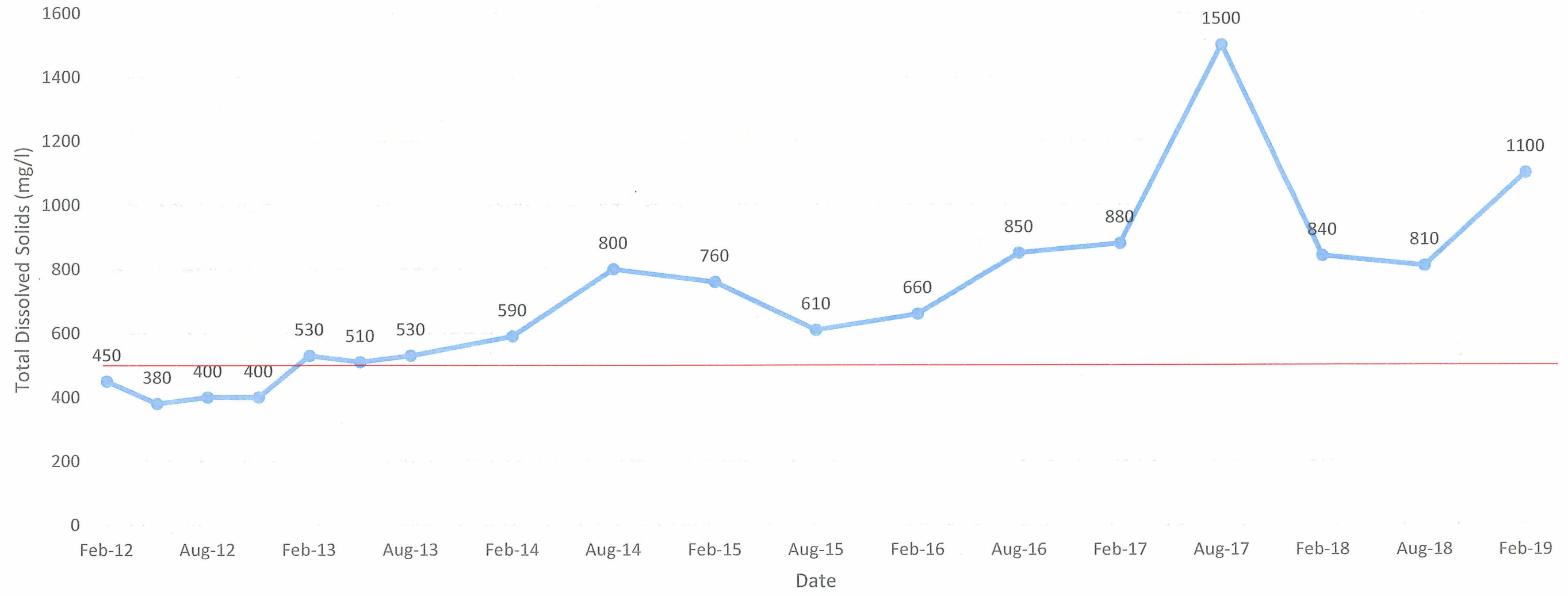


Southeast County Landfill - Monitoring Well TH-71A Chloride



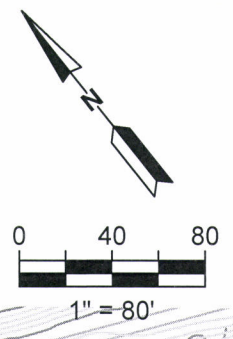
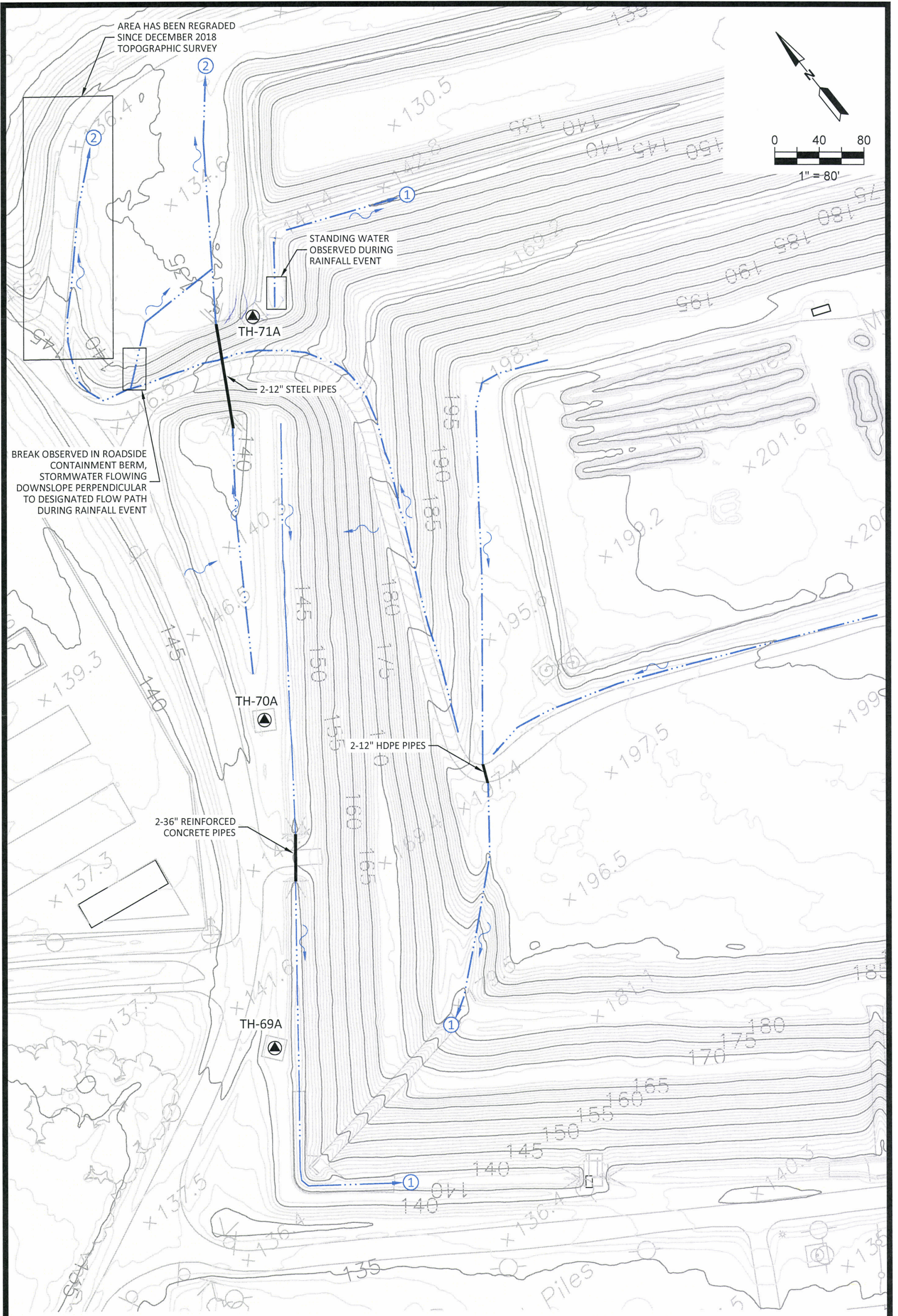


Southeast County Landfill - Monitoing Well TH-71A Total Dissolved Solids





\\tam-fs01\Tampa\Files\PROJECT\Hillsborough\09215600.00\Task 1100 - General Services\9.0 Groundwater Monitoring\CEA monitoring wells\Drawings\Figures\CEA - TH exhibit.dwg Jul 30, 2019 - 10:24am Layout Name: Layout2 By: 4280ced



AREA HAS BEEN REGRADED
SINCE DECEMBER 2018
TOPOGRAPHIC SURVEY

STANDING WATER
OBSERVED DURING
RAINFALL EVENT





BREAK OBSERVED IN ROADSIDE
CONTAINMENT BERM,
STORMWATER FLOWING
DOWNSLOPE PERPENDICULAR
TO DESIGNATED FLOW PATH
DURING RAINFALL EVENT

2-36" REINFORCED
CONCRETE PIPES

2-12" HDPE PIPES

2-12" STEEL PIPES

LEGEND

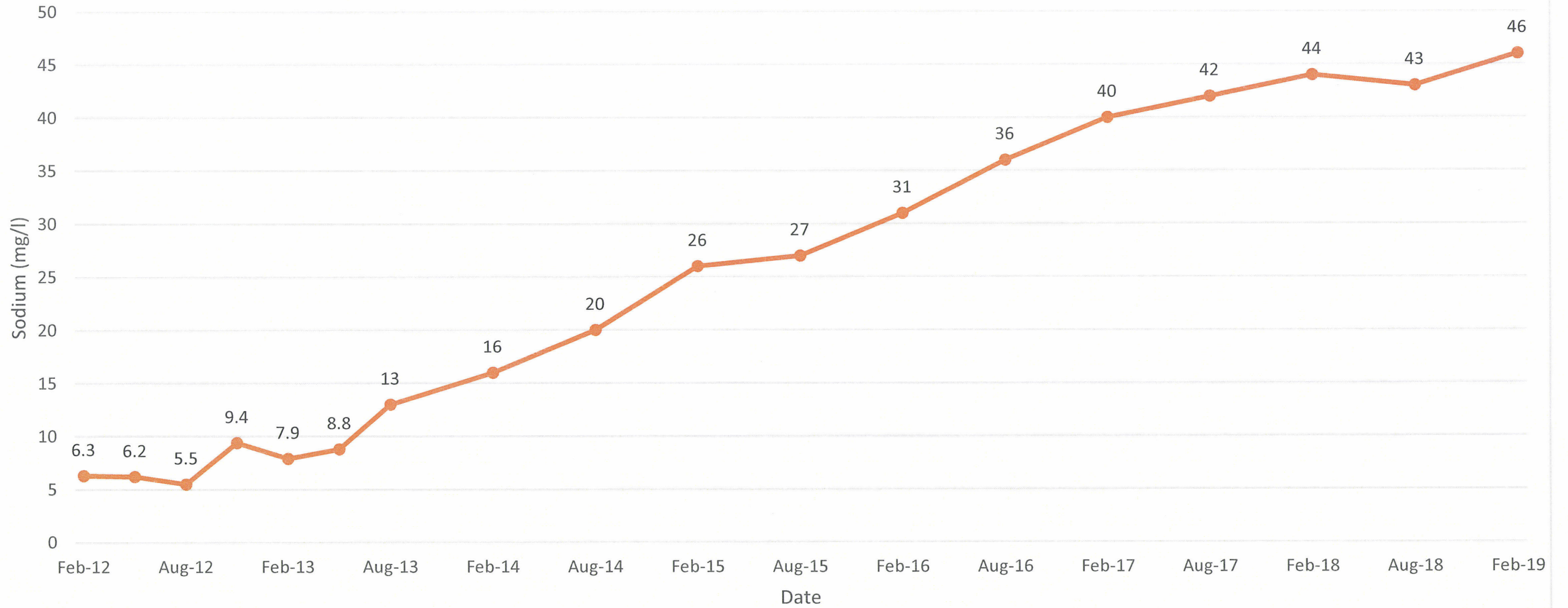
-  FLOW ARROW
-  TO BASIN "C"
-  TO BORROW AREA
-  TH-## MONITORING WELL

NOTE:
EXISTING TOPOGRAPHIC INFORMATION DERIVED FROM A
PHOTOGRAMMETRIC SURVEY PERFORMED BY PICKETT AND
ASSOCIATES, INC. DATED 12/27/18.

**SOUTHEAST COUNTY LANDFILL
CAPACITY EXPANSION AREA RUNOFF**

SCS ENGINEERS

Southeast County Landfill -Monitoring Well TH-71A Sodium



Southeast County Landfill - Monitoring Well TH-71A Ammonia

