

Smith, George

From: Jason Gorrie <jason@jmg-eng.com>
Sent: Friday, February 26, 2021 10:42 AM
To: SWD_Waste
Cc: Timothy J. Treshler; Carrie S. Kimble
Subject: Pasco County Class I Landfill - 2020 Remaining Useful Life Report
Attachments: Class I Landfill Remaining Useful Life Report - Reporting Year 2020.pdf

Jason M. Gorrie, P.E., BCEE
President



JMG Engineering, Inc.
3825 Henderson Blvd.
Suite 604
Tampa, Florida 33629
(813) 605-0706 (office)
(813) 220-0653 (cell)

Pasco County Utilities

Remaining Disposal Capacity and Site Life Calculations Pasco County Resource Recovery Facility

Reporting Year 2020

February 2021

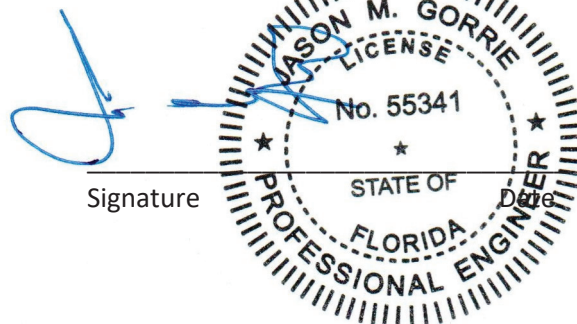


Prepared For:

Pasco County Utilities

Prepared By:

Jason Gorrie, P.E.
JMG Engineering, Inc.
3825 Henderson Blvd.
Suite 604
Tampa, Florida 33629



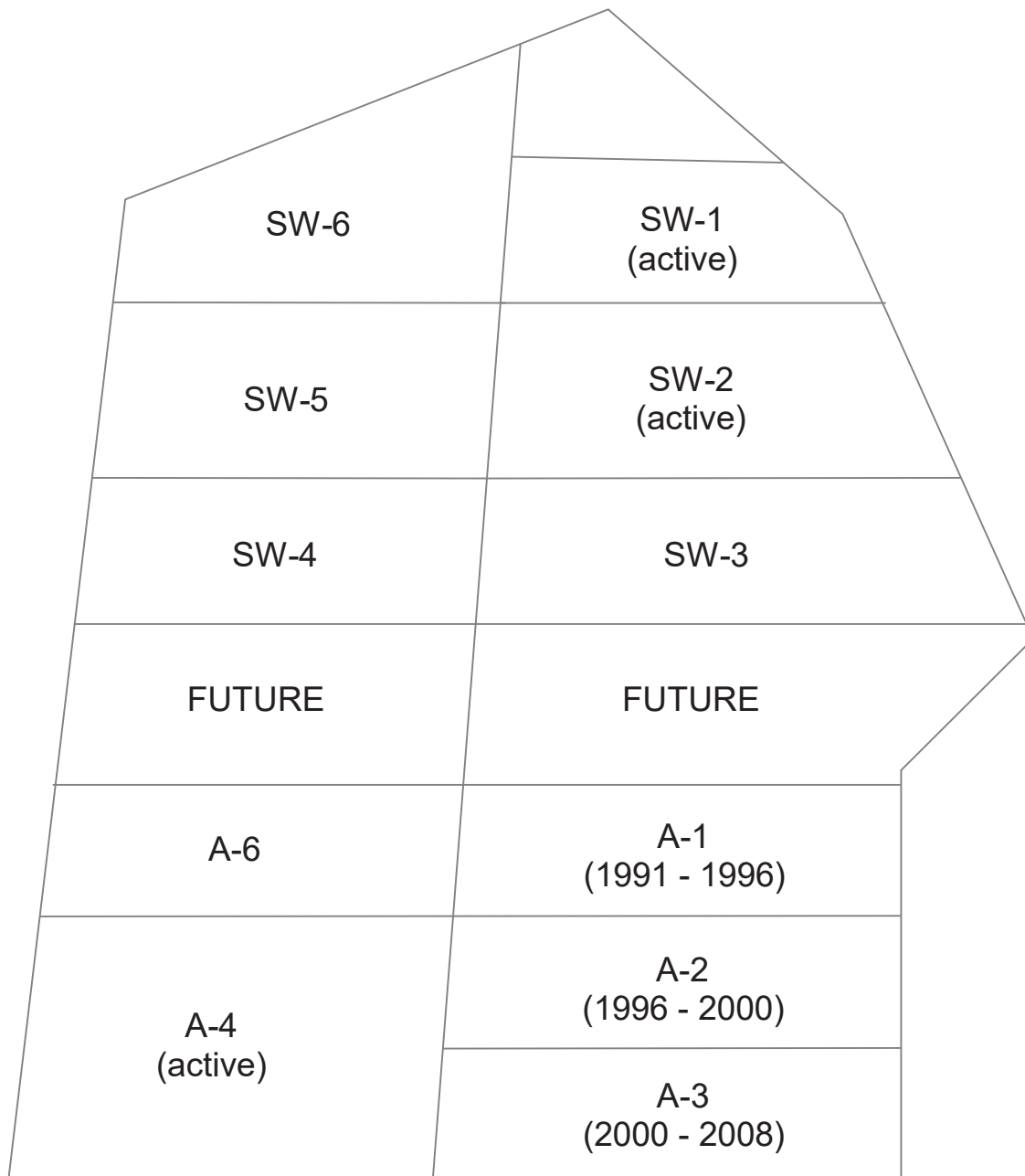
1.0 Purpose of Report

Rule 62-701.500(13)(c) of the Florida Administrative Code (FAC) requires landfill owners and operators to annually prepare an estimate of the remaining life and capacity (in cubic yards) of the existing, constructed landfill and an annual estimate of the life and capacity of other permitted areas not yet constructed. For the purposes of this Report, the “existing, constructed landfill” is considered to be the currently active portions of the site designated as A-4 (for combustion ash) and SW-1/SW-2 (for unprocessed municipal solid waste.) The remaining useful life of disposal cell A-4 is presented in **Section 3.0**. The remaining useful life of disposal cell SW-1/SW-2 is presented in **Section 4.0**. Finally, the remaining useful life of future disposal cells permitted by Power Plant Siting Act Conditions of Certification PA 87-23C are presented in **Section 5**.

2.0 Assumptions Used in Report

- The primary disposal mechanism for municipal solid waste generated within Pasco County is the Pasco County Resource Recovery Facility. The Resource Recovery Facility is permitted to combust approximately 1,050 tons per day of municipal solid waste. Residue from the combustion of the municipal solid waste (hereinafter referred to as “ash”) is disposed in those areas identified in **Figure 1** as “Ash Disposal Cells.” As of the writing of this Report, disposal cells A-1, A-2, and A-3 are temporarily inactive and not receiving ash. While these cells are not currently receiving ash and are temporarily capped with a tarp to minimize leachate generation, they are still available for additional disposal in the future. Disposal cell A-4 is the currently active disposal cell for ash residue and receives all ash generated by the Resource Recovery Facility¹.
- The actual mass value of waste that can be processed by the Resource Recovery Facility is variable due to the heating value of the waste. Drier waste and waste containing larger amounts of plastics has a higher heating value, resulting in less mass throughput through the Resource Recovery Facility. Wetter waste and waste containing less plastics has a lower heating value, resulting in more mass throughput through the Resource Recovery Facility. The heating value of the waste (measured in British thermal units per pound of waste, or Btu/lb) has been observed to be gradually increasing over the course of several years, resulting in a slightly lower mass throughput capability of the Resource Recovery Facility. For purposes of this Report, it is assumed that the annual solid waste mass throughput capacity of the Resource Recovery Facility will remain at 1,050 tons per day for the foreseeable future. Assuming no changes in facility availability, the Resource Recovery Facility is capable of processing approximately 331,000 tons per years given the 1,050 tons per day design capacity, 90% availability and a standard higher heating value of 4,800 Btu per pound. (CDM Smith, 2015)

¹ The Florida Department of Environmental Protection has authorized Pasco County to beneficially utilize a significant portion of the ash generated by the Resource Recovery Facility. For purposes of this Report, it is conservatively assumed that all ash will be placed in the Ash Disposal Cells and not beneficially utilized. It should be noted that future beneficial reuse projects undertaken in accordance with the FDEP’s approval could substantially reduce the amount of ash placed in the Ash Disposal Cells in future years.



LEGEND

A-x Ash Disposal Cells
 SW-x Solid Waste Disposal Cells



FIGURE 1
 Class I Landfill Footprint

2019 Useful Life
 Estimate Pasco County
 Class I Landfill

- The quantity of ash generated by the combustion process at the Resource Recovery Facility is relatively consistent at 23% (by mass) of the municipal solid waste combusted. (Pasco County Utilities, 2018) Previous studies by Covanta and others have demonstrated that the density of the ash is also relatively consistent over protracted periods at 2,200 pounds per cubic yard. Municipal solid waste that is bypassed from the Resource Recovery Facility and placed in the solid waste disposal cells is assumed to have a compacted density of approximately 1,100 pounds per cubic yard.
- It is widely recognized that the population of Pasco County is growing. Future waste generation rates were estimated in 2015 based on population projections generated by the University of Florida's Bureau of Economic and Business Research. These numbers are relied upon in this Report and presented in Table 1.
- The projections presented in this Report rely on multiple assumptions (such as population growth, WTE Facility combustion efficiency, landfill operation efficiency, planned future combustion capacity, etc.) The predicted dates are considered to be accurate to ± 3 years.

2.1 Permitted Disposal Capacity

Construction and operation of the disposal cells at the site is governed by Power Plant Siting Act Conditions of Certification PA87-23C. The permitted maximum elevation of the currently active Ash Disposal Cell (A-4) is 120 feet NGVD. In 2015, CDM-Smith estimated the total volume available for disposal in cell A-4 to be 1,254,269 cubic yards (CDM-Smith, 2015).

In February of 2020, the FDEP approved a modification to the Landfill Operations Plan that allows for a new fill sequence that combines existing disposal cells SW-1 and SW-2 into a common disposal cell. The modification also increased the maximum elevation of the combined cell from 101 feet NGVD to 121 feet NGVD. This new fill sequence and maximum permitted height result in an estimated total volume available for disposal of approximately 1.6 million cubic yards.

3.0 Useful Remaining Life of Cell A-4

The currently permitted capacity of Ash Disposal Cell A-4 is considered to be 1,254,269 cubic yards. As of January 2021, all six subcells are considered to be "active", however, only subcells 4 and 5 are receiving ash for disposal. Subcell 6 is being utilized for ash and metals processing only. In order to estimate the current volume of waste in place in Cell A-4, D.C. Johnson Associates conducted a topographic survey of the active cell in December 2020. The elevation contours of the A4 disposal cell are depicted at **Attachment 1**.

Using the elevations reported on the topographic survey in conjunction with the known elevations of the liner system, it is possible to estimate the volume of ash in place in cell A-4. Mathematically, the volume under a function is defined by the double integral:

$$\int_{x-\min}^{x-\max} \int_{y-\min}^{y-\max} f(x, y) dx dy$$

To determine the function $f(x, y)$ defining the shape of the landfill surfaces, JMG Engineering relied upon the volume calculation algorithms of the surface mapping software program Surfer® 13. The total volume of ash calculated to be currently in place in A-4 is approximately 500,948 cubic yards.

Given the permitted volumetric capacity of 1,254,269 cubic yards and subtracting the 527,702 cubic yards calculated from the 2020 survey to be currently in place, approximately 726,567 cubic yards of airspace remains available for disposal. Municipal waste combustor ash has an approximate density of 2,200 pounds per cubic yard. Using the assumed density, the 726,567 remaining cubic yards can accommodate approximately 799,224 tons of ash.

Table 1 below shows the projected ash generation rate as a function of anticipated Resource Recovery Facility capacity. Because the waste-to-energy facility is currently operating at its maximum capacity, no changes in the ash generation rate are expected in the immediate future. However, it is anticipated that the planned Facility expansion will be complete by the year 2026 and will result in an increased ash generation rate of approximately 87,000 cubic yards beginning in Calendar Year 2027. As shown in Table 1, this increased ash generation rate **will consume the remaining available airspace of A4 by approximately 2029.**

4.0 Useful Remaining Life of Cell SW-2

The calculation procedures used to estimate the remaining useful life for disposal cell SW-1/SW-2 are identical to those described above for disposal cell A-4. Utilizing the surveyed elevations provided by Pasco County Engineering Services Department (see **Attachment 2**), the Surfer 13® algorithms determined that the volume of solid waste present in SW-1/SW-2 at the beginning of the fiscal year is approximately 790,780 cubic yards (see **Attachment 4**).

The new permitted volumetric capacity of SW-1/SW-2 is assumed to be 1.6 million cubic yards (see **Attachment 6**). Subtracting the 790,780 cubic yards calculated to be currently in place, approximately 809,220 cubic yards of airspace remains available for disposal.

The intent of the solid waste cells (inclusive of SW-1/SW-2) as stated in the original application for Power Plant Siting Certification is to accommodate solid waste deliveries in excess of the Resource Recovery Facility's capacity. As stated previously, the Resource Recovery Facility is operating at capacity. This necessitates periodic (and temporary) diversions during times when the Resource Recovery Facility must operate at reduced capacity to facilitate maintenance activities. The rate of waste placement in SW-1/SW-2 is also heavily dependent upon year-to-year budget decisions about the amount of waste to haul out of County for disposal.

Table 1 below shows the projected waste diversion volume as a function of anticipated Resource Recovery Facility capacity and future population growth². Using an assumed density of 1,100 pounds per cubic yard for municipal solid waste compacted in-place (USEPA, 2016), and further assuming that daily cover equivalent to 15% (by volume) per year will be utilized, it is estimated that remaining airspace will be consumed at the rate identified in Table 1. Accordingly, **the estimated remaining useful life of cell**

² The diversion rates listed in Table 1 are conservative. The actual diversion rate is expected to be less than that presented in Table 1 because the Resource Recovery Facility has demonstrated an ability to process waste in excess of the 331,000 tons per year listed in the 2015 Solid Waste Master Plan.

SW-1/SW-2 (as currently designed and permitted) is at least 10 years using a combination of exporting waste out-of-county and disposal in SW-1/SW-2³.

5.0 Useful Remaining Life of Future Disposal Cells

As shown in Figure 1, several acres of permitted disposal space remain available for future use by the County. At present, liner and leachate collection systems have been constructed for the following disposal cells: SW-1, SW-2, A-1, A-2, A-3, and A-4. Because these lined cells are adjacent to each other, it is possible to maximize the airspace over existing lined areas by utilizing the interstitial space (or valley) between the existing cells. Such a practice will delay the need for construction of additional liner and leachate collection systems.

Finally, those cells identified in Figure 1 as SW-3, SW-4, SW-5, and SW-6 are sited and permitted as disposal areas but are yet to be constructed. Assuming that the ultimate capacity of these yet-to-be constructed cells will have an approximate capacity of 750,000 cubic yards each⁴, an additional 3 million cubic yards of disposal volume for MSW remains available to Pasco County. This equates to roughly 13 years of disposal capacity at the reasonably foreseeable MSW disposal rates anticipated in the future, as depicted in **Table 2**. Use of these permitted cells for disposal of ash (rather than uncombusted MSW) from the Resource Recovery Facility) will prolong the remaining useful life even further.

³ Rapid population growth has necessitated increased reliance on out-of-county hauling. It is assumed that out-of-county hauling will continue to be heavily relied upon until the waste-to-energy expansion is completed in 2025.

⁴ It is assumed that landfill operators will be able to achieve greater compaction efficiencies and lower daily cover application rates if it becomes necessary to operate the solid waste disposal cells in a permanent (rather than intermittent) fashion, resulting in a larger disposal capacity than is currently achieved in SW-1/SW-2.

Table 1

Estimated Waste Generation Rates, Waste Disposal Rates, and Remaining Disposal Capacity

Fiscal Year (Oct - Sep)	Resource Recovery Facility				A-4 Disposal Cell			SW-1/SW-2 Disposal Cell					Hauled Out-of County	
	Projected Total Waste Received ¹ (tons)	Estimated Waste Processed ^{1a} (tons)	Estimated Ash Generation Rate (tons) (yds ³) ⁵		Estimated Ash In Place at Beginning of Fiscal Year (yds ³)	Estimated Waste Placement Rate (yds ³)	Estimated Remaining Disposal Capacity at End of Fiscal Year ³ (yds ³)	Estimated Waste In Place at Beginning of Fiscal Year ³ (yds ³)	Estimated Waste Placement Rate (tons)	Estimated Waste Placement Rate (yds ³) ⁶	Estimated Daily Cover Application Rate (yds ³)	Estimated Remaining Disposal Capacity at End of Fiscal Year ⁴ (yds ³)	Estimated Waste Transferred ⁸ (tons)	Estimated Waste Transferred (yds ³) ²
2018 ⁷	378,733	341,122	85,875	78,068	346,700	78,068	836,000	219,261	15,093	27,442	4,116	403,000	22,518	150,120
2019 ^{7a}	386,807	342,994	83,477	75,889	418,000	75,889	760,380	250,819	10,306	18,738	2,811	381,451	33,507	223,380
2020 ^{7b}	411,616	352,875	81,161	73,783	500,948	73,783	726,567	768,591	9,639	17,525	2,629	809,220	49,102	327,347
2021	450,000	331,000	76,130	69,209	527,702	69,209	657,358	790,780	24,000	43,636	6,545	740,598	95,000	633,333
2022	460,000	331,000	76,130	69,209	596,911	69,209	588,149	840,962	29,000	52,727	7,909	679,962	100,000	666,667
2023	475,000	331,000	76,130	69,209	666,120	69,209	518,940	901,598	44,000	80,000	12,000	587,962	100,000	666,667
2024	485,000	331,000	76,130	69,209	735,329	69,209	449,731	993,598	54,000	98,182	14,727	475,053	100,000	666,667
2025	495,000	331,000	76,130	69,209	804,538	69,209	380,522	1,106,507	64,000	116,364	17,455	341,235	100,000	666,667
2026	505,000	331,000	76,130	69,209	873,747	69,209	311,312	1,240,325	74,000	134,545	20,182	186,507	100,000	666,667
2027	515,000	515,000	118,450	107,682	942,957	107,682	203,631	1,395,053	0	0	0	186,507	0	0
2028	525,000	520,000	119,600	108,727	1,050,638	108,727	94,903	1,395,053	5,000	9,091	1,364	176,053	0	0
2029	530,000	520,000	119,600	108,727	1,159,366	47,874	47,029	1,405,507	10,000	18,182	2,727	155,144	0	0
2030	545,000	520,000	119,600	108,727				1,426,416	25,000	45,455	6,818	102,871	0	0
2031	550,000	520,000	119,600	108,727				1,478,689	30,000	54,545	8,182	40,144	0	0

¹ Source: Integrated Solid Waste Management System Master Plan Update, Figure 3-2, CDM-Smith,2019, except where noted^{1a} Source: Integrated Solid Waste Management System Master Plan Update, Section 3, CDM-Smith,2019² assume density of uncompacted mixed MSW to be 300 lbs/cu. yd³ assume total capacity of A4 is 1,254,269 cu. yds.⁴ assume total capacity of SW1/SW2 is 900,000 cu. yds. prior to 2020, 1.6 million after 2020 (following FDEP Modification)⁵ assume density of ash to be 2,200 lbs/cu. yd.⁶ assume density of compacted mixed MSW to be 1,100 lbs/cu. yd.⁷ 2018 Values are actual values as reported by Pasco County, 1/17/19 Memorandum from J. Chamberlain to M. Carballa^{7a} 2019 Values are actual values as reported by Pasco County, 1/24/20 Memorandum from T. Treshler to M. Carballa^{7b} 2020 Values are actual values as reported by Pasco County, 1/29/2021 Memorandum from J. Chamberlain to M. Carballa⁸ Assumes that favorable pricing will result in decision to haul out of county through 2025⁹ pre-2020 values are for SW2 only. 2020 values and beyond are combined SW1 and SW2

TABLE 2
Future Cells SW-3, SW-4, SW-5, and SW-6

Year	Projected Total Waste Received ¹ (tons)				
		Estimated Waste Placement Rate ² (tons)	Estimated Waste Placement Rate (yds ³)	Estimated Daily Cover Application Rate (yds ³) ⁶	Estimated Remaining Disposal Capacity at End of Calendar Year ⁴ (yds ³)
2026	400,000	69,000	98,571	9,857	2,891,571
2027	410,000	79,000	112,857	11,286	2,767,429
2028	425,000	94,000	134,286	13,429	2,619,714
2029	435,000	104,000	148,571	14,857	2,456,286
2030	450,000	119,000	170,000	17,000	2,269,286
2031	452,000	121,000	172,857	17,286	2,079,143
2032	460,000	129,000	184,286	18,429	1,876,429
2033	475,000	144,000	205,714	20,571	1,650,143
2034	480,000	149,000	212,857	21,286	1,416,000
2035	490,000	159,000	227,143	22,714	1,166,143
2036	500,000	169,000	241,429	24,143	900,571
2037	510,000	179,000	255,714	25,571	619,286
2038	520,000	189,000	270,000	27,000	322,286
2039	530,000	199,000	284,286	28,429	9,571
2040	530,000				
2041	530,000				

¹ Source: Integrated Solid Waste Management System Master Plan, Figure 2-3, CDM-Smith, 2015

² Projected Total Waste Delivered minus 331,000 tons processed in WTE Facility

References

CDM Smith. (2015). *Integrated Solid Waste Management System Master Plan*.

CDM-Smith. (2015). *Annual Remaining Disposal Capacity and Site Life Calculations*.

Pasco County Utilities. (2018). *Waste to Energy Tonnage Report*.

USEPA. (2016). *Volume to Weight Conversion Factors, Office of Resource Conservation and Recovery*.

Attachments

Attachment 1: A-4 Topographic Contours

Attachment 2: SW-2 Topographic Contours

Attachment 3: A-4 Grid Volume Computations

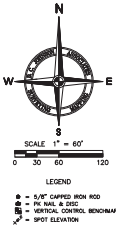
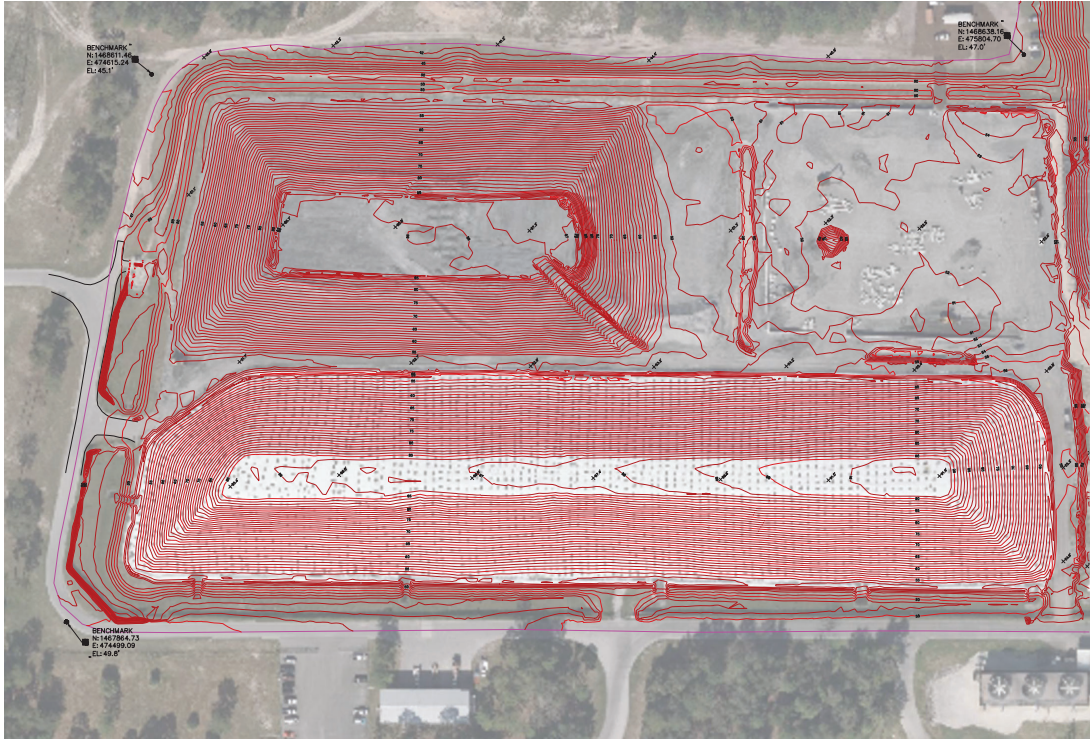
Attachment 4: SW-2 Grid Volume Computations

Attachment 5: Waste Placement Records

Attachment 6: SW-1/SW-2 Grid Volume Calculations at Buildout

ATTACHMENT 1

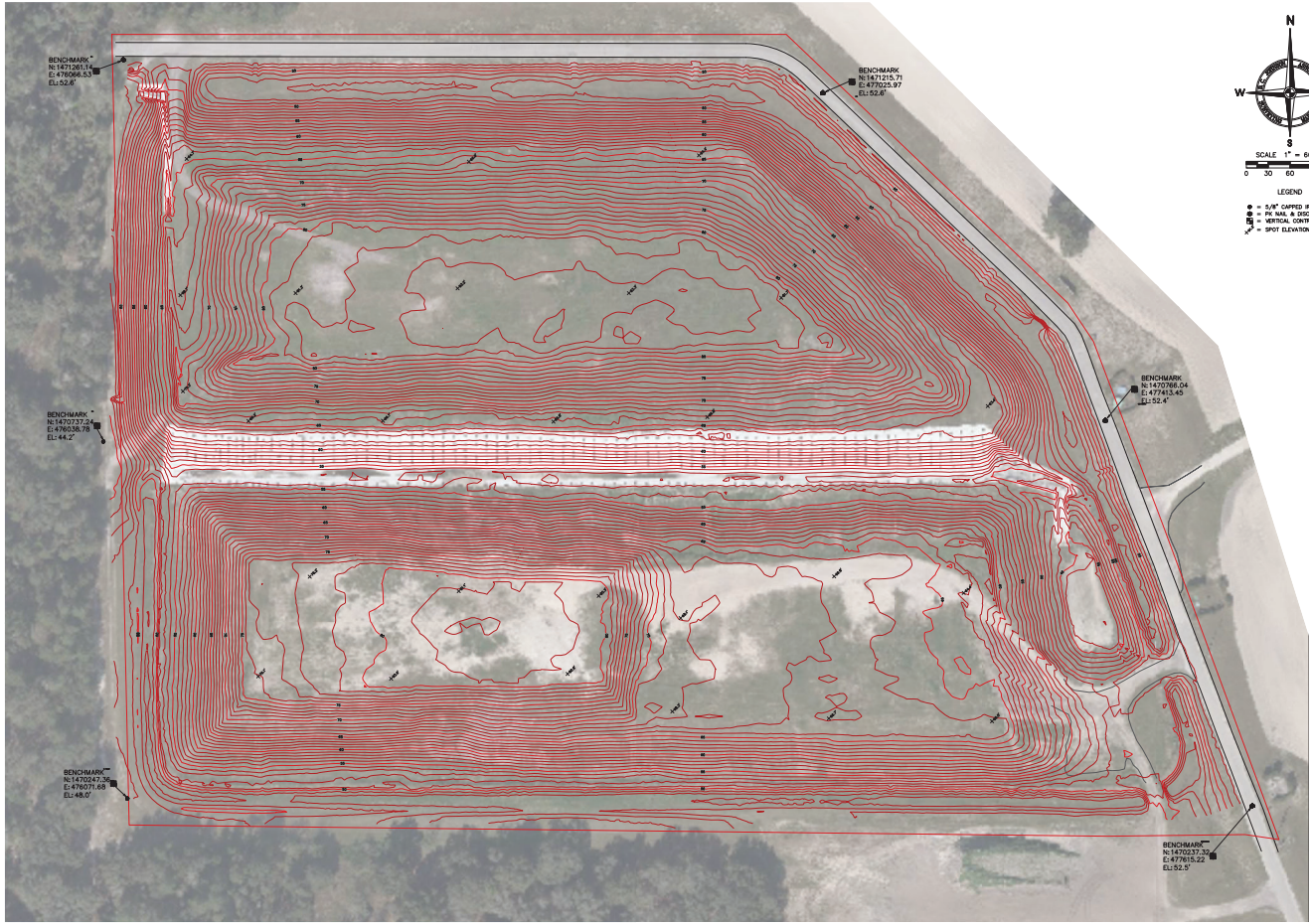
A-4 Contours



- LEGEND
- = 5/8" CAPPED IRON ROD
 - = PIN NAIL & DISC
 - = VERTICAL CONTROL BENCHMARK
 - = SPOT ELEVATION

Topographic Survey Pasco County Solid Waste Department Pasco Waste Area 2-A	
PROJECT NO. PAS-2018-0000000000 SHEET NO. 2 of 4	
DATE OF FIELD SURVEY: 12/01/2020	
COUNTY: Pasco	
TWP: 24 N. R. 10 W. 17 E.	
ASSOCIATES SURVEYING AND MAPPING 1000 N. 10th St., Suite 100 Pasco, WA 99301 Phone: (509) 325-1111 Fax: (509) 325-1112 www.ahansonassociates.com	

ATTACHMENT 2
SW-1/SW-2 Contours



Topographic Survey
 Pasco County Solid Waste Department
 Pasco Waste, Area 3
 PASCO COUNTY, FLORIDA
 TWP. 24 N. R. 10 W. 17 E. COUNTY: Pasco

ATTACHMENT 3
A-4 Grid Volume Calculations

Grid Volume Computations

Thu Jan 28 09:59:11 2021

Upper Surface

Grid File Name:	C:\Users\jason\OD\Pasco\Compliance Assistance (TO 1-21)\Landfill Useful
Life\A4\A4.grd	
Grid Size:	100 rows x 56 columns
X Minimum:	1467848.532
X Maximum:	1469323.447
X Spacing:	26.816636363637
Y Minimum:	474481.9094
Y Maximum:	477118.2186
Y Spacing:	26.629385858586
Z Minimum:	46.592538060014
Z Maximum:	92.101721084065

Lower Surface

Level Surface defined by Z = 48

Volumes

Z Scale Factor: 1

Total Volumes by:

Trapezoidal Rule:	14247974.407198 ft ³ = 527,702 yd ³
Simpson's Rule:	14265467.861175
Simpson's 3/8 Rule:	14238541.784814

Cut & Fill Volumes

Positive Volume [Cut]:	14249272.220779
Negative Volume [Fill]:	1297.8135807952
Net Volume [Cut-Fill]:	14247974.407198

Areas

Planar Areas

Positive Planar Area [Cut]: 799092.89514411

Negative Planar Area [Fill]:	353.87359279496
Blanked Planar Area:	3088885.2149812
Total Planar Area:	3888331.9837181

Surface Areas

Positive Surface Area [Cut]:	818494.96799657
Negative Surface Area [Fill]:	359.6395368378

ATTACHMENT 4
SW-1/SW-2 Grid Volume Calculations

Grid Volume Computations

Fri Jan 22 09:03:02 2021

Upper Surface

Grid File Name: C:\Users\jason\OD\Pasco\Compliance Assistance (TO 1-21)\Landfill Useful
Life\SW_1_2\North-DTM-122020_PNEZ.grd
Grid Size: 100 rows x 68 columns

X Minimum: 1470204.206
X Maximum: 1471266.639
X Spacing: 15.857208955223

Y Minimum: 476046.9577
Y Maximum: 477605.5718
Y Spacing: 15.743576767676

Z Minimum: 44.848883161958
Z Maximum: 84.139509551541

Lower Surface

Level Surface defined by Z = 48

Volumes

Z Scale Factor: 1

Total Volumes by:

Trapezoidal Rule: 21351076.328541 ft³ = 790,781 yd³
Simpson's Rule: 21349009.73972
Simpson's 3/8 Rule: 21357497.993799

Cut & Fill Volumes

Positive Volume [Cut]: 21374118.033243
Negative Volume [Fill]: 23041.704702385
Net Volume [Cut-Fill]: 21351076.328541

Areas

Planar Areas

Positive Planar Area [Cut]: 1134613.7606947

Negative Planar Area [Fill]:	16144.164512222
Blanked Planar Area:	505165.12889821
Total Planar Area:	1655923.0541052

Surface Areas

Positive Surface Area [Cut]:	1149765.842992
Negative Surface Area [Fill]:	16277.120580001

ATTACHMENT 5

Waste Placement Records



PUBLIC INFRASTRUCTURE BRANCH
Solid Waste and Resource Recovery

INTEROFFICE
MEMORANDUM

DATE: January 29, 2021
TO: Michael J. Carballa, P. E., BCEE, Assistant County Administrator (Public Infrastructure)
THRU: Justin Grant, MPA, Fiscal and Business Administration Director
FROM: Joanne Chamberlain, Accountant II
FILE: UT21-0208

SUBJECT: Quarterly Tonnage Report, Waste-to-Energy Facility, December, 2020

REFERENCES:

Attached are the latest monthly totals for Solid Waste and Ash processed at the Pasco County Waste-To-Energy Facility. This report is provided quarterly, but presented by month, with daily averages.

Current Quarter's ratio of ash to waste by month:
This Fiscal Year's monthly average ratio ash to waste = 23%
Current Quarter's processable waste by month:
Current Quarter's Recycling totals by month:

	Oct	Nov	Dec
	23%	24%	24%
	26,230	30,070	32,256
	753.21	294.21	867.60
			** Tons

** as of October 2011, this figure is based on Recycling hauled out

FY 2021 WASTE SUMMARY:
88,557 Tons of MSW delivered to the Waste-to-Energy Facility to date
3,215 Tons Bypassed to SW Cells (Not Included in WTE Report Tonnage)
13,508 Tons Hauled Out of County (Not Included in WTE Tonnage)
105,278 Total MSW to date for Fiscal Year

PAST MSW ACTIVITY:

FY 16	FY 17	FY 18	FY 19	FY 20	Total MSW for Fiscal Year
354,273	364,947	378,733	388,807	411,516	
342,645	339,615	341,122	342,994	352,875	Tons of MSW delivered to the Waste-to-Energy Facility during FY
3,156	0	15,093	10,306	9,639	Tons of MSW Bypassed to the SW Cells during FY
8,472	25,333	22,518	33,507	49,102	Tons of MSW Hauled out of the County during FY

cc: Justin Roessler, P.E., Public Infrastructure, Interim Solid Waste Director
Tim Treshler, Public Infrastructure, Sr. Project Manager Solid Waste
Rachelle Dobbs, Recycling Supervisor

Mission: Providing our community, customers, and future generations with high quality, efficient, and innovative water, wastewater, and solid waste services

Pasco County Waste - to - Energy Tonnage Report

MONTH/ YEAR	WEST PASCO		EAST PASCO TONNAGE HAULED OUT (Info Only)	EAST PASCO			TOTAL PASCO	DAILY AVG	HERNANDO		PROCESSABLE WASTE		ASH		% ASH/ MSW	RECYCLING TOTAL TONS	MEGA WATTS	
	TONS	DAILY AVG		LOADS	TONS	DAILY AVG			WASTE	DAILY AVG	TOTAL TONS	DAILY AVG	TOTAL TONS	DAILY AVG			MONTHLY GEN.	12 MONTH ROLLING AVERAGE
Oct-18	24,600.84	793.58	3,896.68	145	3,077.07	99.26	27,677.91	892.84	0.00	0.00	27,677.91	892.84	6,679.64	215.47	0.24	617.46	15.54	21.67
Nov-18	23,792.76	793.09	237.05	326	7,013.06	233.77	30,805.82	1,026.86	0.00	0.00	30,805.82	1,026.86	7,128.17	237.61	0.23	705.13	23.55	21.75
Dec-18	24,223.27	781.40	0.00	341	7,461.50	240.69	31,684.77	1,022.09	0.00	0.00	31,684.77	1,022.09	7,299.03	235.45	0.23	731.47	22.85	21.71
Jan-19	25,700.47	829.05	3,473.97	207	4,523.45	145.92	30,223.92	974.97	0.00	0.00	30,223.92	974.97	7,545.85	243.41	0.25	845.16	23.32	21.74
Feb-19	13,947.11	498.11	6,189.62	45	954.93	34.10	14,902.04	532.22	0.00	0.00	14,902.04	532.22	5,806.39	207.37	0.39	772.80	17.15	21.32
Mar-19	23,558.92	759.97	3,590.30	195	4,184.45	134.98	27,743.37	894.95	0.00	0.00	27,743.37	894.95	4,848.22	156.39	0.17	801.16	15.61	21.12
Apr-19	25,790.72	859.69	4,571.55	155	3,379.31	112.64	29,170.03	972.33	0.00	0.00	29,170.03	972.33	7,467.67	248.92	0.26	746.37	23.51	21.24
May-19	25,337.26	817.33	1,164.82	297	6,385.45	205.98	31,722.71	1,023.31	0.00	0.00	31,722.71	1,023.31	7,565.51	244.05	0.24	753.53	22.85	21.15
Jun-19	23,179.88	772.66	6,106.18	62	1,307.23	43.57	24,487.11	816.24	0.00	0.00	24,487.11	816.24	7,232.09	241.07	0.30	657.88	21.38	21.20
Jul-19	26,746.94	862.80	2,620.19	258	5,599.82	180.64	32,346.76	1,043.44	0.00	0.00	32,346.76	1,043.44	8,233.49	265.60	0.25	630.30	23.10	21.25
Aug-19	25,772.25	831.36	0.00	358	7,866.53	253.76	33,638.78	1,085.12	0.00	0.00	33,638.78	1,085.12	7,882.45	254.27	0.23	655.80	24.00	21.35
Sep-19	23,118.96	770.63	1,656.47	250	5,471.99	182.40	28,590.95	953.03	0.00	0.00	28,590.95	953.03	7,424.42	247.48	0.26	594.08	24.00	21.41
Total 19	285,769.38		33,506.83	2,639	57,224.79		342,994.17		0.00		342,994.17		85,112.93			8,511.14	256.86	
Average19	23,814.12	780.81	2,792.24	220	4,768.73	155.64	28,582.85	936.45	0.00	0.00	28,582.85	936.45	7,092.74	233.09	0.25	709.26	21.41	
Oct-19	25,083.98	809.16	5,499.96	91	2,006.06	64.71	27,090.04	873.87	0.00	0.00	27,090.04	873.87	6,368.82	205.45	0.24	691.25	16.19	21.46
Nov-19	23,373.85	779.13	2,083.07	231	5,238.45	174.62	28,612.30	953.74	0.00	0.00	28,612.30	953.74	7,892.60	263.09	0.28	627.57	23.72	21.47
Dec-19	26,528.40	855.75	4,127.65	201	4,404.19	142.07	30,932.59	997.83	0.00	0.00	30,932.59	997.83	7,909.93	255.16	0.26	582.16	23.59	21.54
Jan-20	26,052.32	840.40	6,138.30	90	1,943.25	62.69	27,995.57	903.08	0.00	0.00	27,995.57	903.08	7,859.24	253.52	0.28	774.90	23.50	21.55
Feb-20	24,525.08	845.69	5,615.27	84	1,816.83	62.65	26,341.91	908.34	0.00	0.00	26,341.91	908.34	7,396.71	255.06	0.28	595.05	23.13	22.05
Mar-20	26,594.43	857.88	6,151.85	97	2,142.69	69.12	28,737.12	927.00	0.00	0.00	28,737.12	927.00	6,131.77	197.80	0.21	433.80	16.63	22.13
Apr-20	26,495.03	854.68	5,477.19	107	2,314.56	74.66	28,809.59	929.34	0.00	0.00	28,809.59	929.34	7,918.16	255.42	0.27	166.63	23.73	22.15
May-20	23,903.90	824.27	2,792.35	231	4,947.23	170.59	28,851.13	994.87	0.00	0.00	28,851.13	994.87	7,532.58	259.74	0.26	0.00	23.79	22.23
Jun-20	22,107.23	713.14	4,015.32	203	4,369.26	140.94	26,476.49	854.08	0.00	0.00	26,476.49	854.08	7,228.25	233.17	0.27	78.10	22.89	22.36
Jul-20	28,114.96	906.93	2,423.04	273	5,882.57	189.76	33,997.53	1,096.69	0.00	0.00	33,997.53	1,096.69	7,467.56	240.89	0.22	745.93	22.99	22.35
Aug-20	29,366.37	1,012.63	0.00	231	4,947.23	170.59	34,313.60	1,183.23	0.00	0.00	34,313.60	1,183.23	7,128.44	245.81	0.21	619.51	22.39	22.21
Sep-20	27,026.56	871.82	4,777.97	170	3,690.34	119.04	30,716.90	990.87	0.00	0.00	30,716.90	990.87	7,460.15	240.65	0.24	732.02	22.53	22.09
Total 20	309,172.11		49,101.97	2,009	43,702.66		352,874.77		0.00		352,874.77		88,294.21			6,046.92	265.08	
Average20	25,764.34	847.62	4,091.83	167	3,641.89	120.12	29,406.23	967.75	0.00	0.00	29,406.23	967.75	7,357.85	242.15	0.25	503.91	19.96	
Oct-20	23,106.39	745.37	4,938.54	146	3,123.85	100.77	26,230.24	846.14	0.00	0.00	26,230.24	846.14	5,959.95	192.26	0.23	753.21	15.11	22.00
Nov-20	26,360.03	878.67	4,626.82	163	3,710.28	123.68	30,070.31	1,002.34	0.00	0.00	30,070.31	1,002.34	7,117.53	237.25	0.24	294.21	23.00	21.94
Dec-20	27,599.69	890.31	3,940.92	205	4,656.68	150.22	32,256.37	1,040.53	0.00	0.00	32,256.37	1,040.53	7,710.85	248.74	0.24	867.60	23.33	21.92
Jan-21	0.00																	
Feb-21	0.00																	
Mar-21	0.00																	
Apr-21	0.00																	
May-21	0.00																	
Jun-21	0.00																	
Jul-21	0.00																	
Aug-21	0.00																	
Sep-21	0.00																	
Total 20	77,066.11		13,506.28	514	11,490.81		88,556.92		0.00		88,556.92		20,788.33			1,915.02	61.44	
Average20	6,422.18	838.12	4,502.09	171	3,830.27	124.89	29,518.97	963.00	0.00	0.00	29,518.97	963.00	6,929.44	226.08	0.23	638.34	19.05	

Pasco County Waste - to - Energy Tonnage Report

MONTH/ YEAR	WEST PASCO		EAST PASCO TONNAGE HAULED OUT (Info Only)	EAST PASCO			TOTAL PASCO	DAILY AVG	HERNANDO		PROCESSABLE WASTE		ASH		% ASH/ MSW	RECYCLING TOTAL TONS	MEGA WATTS	
	TONS	DAILY AVG		LOADS	TONS	DAILY AVG			WASTE	DAILY AVG	TOTAL TONS	DAILY AVG	TOTAL TONS	DAILY AVG			MONTHLY GEN.	12 MONTH ROLLING AVERAGE
Oct-15	24,937.97	804.45	0.00	154	3,283.94	105.93	28,221.91	910.38	0.00	0.00	28,221.91	910.38	5,722.23	184.59	0.20	242.49	16.36	21.56
Nov-15	21,212.18	707.07	0.00	289	6,119.90	204.00	27,332.08	911.07	0.00	0.00	27,332.08	911.07	6,211.75	207.06	0.23	277.10	20.52	21.42
Dec-15	23,363.61	753.66	0.00	331	7,027.99	226.71	30,391.60	980.37	0.00	0.00	30,391.60	980.37	6,816.88	219.90	0.22	314.57	22.92	21.45
Jan-16	21,319.66	687.73	0.00	310	6,660.51	214.86	27,980.17	902.59	0.00	0.00	27,980.17	902.59	6,804.52	219.50	0.24	369.65	24.08	21.50
Feb-16	22,431.16	773.49	1,965.80	217	4,573.26	157.70	27,004.42	931.19	0.00	0.00	27,004.42	931.19	7,066.59	243.68	0.26	320.57	24.34	21.60
Mar-16	21,436.39	691.50	2,519.61	227	4,944.41	159.50	26,380.80	850.99	0.00	0.00	26,380.80	850.99	5,035.65	162.44	0.19	338.00	16.26	21.84
Apr-16	23,519.62	758.70	2,169.59	214	4,628.04	149.29	28,147.66	907.99	0.00	0.00	28,147.66	907.99	7,246.98	233.77	0.26	380.67	23.93	21.86
May-16	22,973.64	741.09	0.00	297	6,432.42	207.50	29,406.06	948.58	0.00	0.00	29,406.06	948.58	7,403.66	238.83	0.25	320.36	25.13	21.97
Jun-16	23,128.06	770.94	0.00	294	6,339.22	211.31	29,467.28	982.24	0.00	0.00	29,467.28	982.24	6,755.87	225.20	0.23	310.80	23.37	22.11
Jul-16	22,538.24	727.04	0.00	261	5,639.20	181.91	28,177.44	908.95	0.00	0.00	28,177.44	908.95	7,123.25	229.78	0.25	410.75	24.01	22.19
Aug-16	24,625.37	794.37	0.00	291	6,464.41	208.53	31,089.78	1,002.90	0.00	0.00	31,089.78	1,002.90	7,207.85	232.51	0.23	432.41	23.36	22.24
Sep-16	24,636.62	821.22	1,816.52	202	4,409.67	146.99	29,046.29	968.21	0.00	0.00	29,046.29	968.21	6,535.09	217.84	0.22	491.41	23.38	22.30
Total 16	276,122.52		8,471.52	3,087	66,522.97		342,645.49		0.00		342,645.49		79,930.32			4,208.78	267.66	
Average16	23,010.21	752.60	705.96	257	5,543.58	181.18	28,553.79	933.79	0.00	0.00	28,553.79	933.79	6,660.86	217.92	0.23	350.73	22.30	
Oct-16	21,923.70	707.22	2,659.78	172	3,445.44	111.14	25,369.14	818.36	0.00	0.00	25,369.14	818.36	4,977.41	160.56	0.20	443.92	13.52	22.07
Nov-16	22,282.13	742.74	376.12	286	6,156.94	205.23	28,439.07	947.97	0.00	0.00	28,439.07	947.97	6,637.72	221.26	0.23	479.86	23.37	22.31
Dec-16	23,348.17	777.53	0.00	297	6,432.85	214.43	29,781.02	991.96	0.00	0.00	29,781.02	991.96	7,376.60	245.89	0.25	613.61	24.50	22.44
Jan-17	23,821.58	768.44	3,930.89	145	3,172.49	102.34	26,994.07	870.78	0.00	0.00	26,994.07	870.78	7,236.77	233.44	0.27	606.18	24.06	22.44
Feb-17	21,706.46	775.23	4,585.43	73	1,589.20	56.76	23,295.66	831.99	0.00	0.00	23,295.66	831.99	6,531.49	233.27	0.28	554.80	23.33	22.35
Mar-17	24,697.21	796.68	4,203.76	136	2,962.96	95.58	27,660.17	892.26	0.00	0.00	27,660.17	892.26	5,283.94	170.45	0.19	644.39	13.16	22.09
Apr-17	22,053.22	735.11	2,533.75	173	3,783.57	126.12	25,836.79	861.23	0.00	0.00	25,836.79	861.23	6,607.75	220.26	0.26	646.18	24.04	22.10
May-17	25,110.57	810.02	686.63	275	6,019.41	194.17	31,129.98	1,004.19	0.00	0.00	31,129.98	1,004.19	7,289.76	235.15	0.23	562.42	24.21	22.03
Jun-17	24,995.93	833.20	2,382.53	199	4,181.86	139.40	29,177.79	972.59	0.00	0.00	29,177.79	972.59	6,941.19	231.37	0.24	651.40	23.56	22.04
Jul-17	23,458.33	756.72	0.00	285	6,195.25	199.85	29,653.58	956.57	0.00	0.00	29,653.58	956.57	6,650.33	214.53	0.22	528.04	23.56	22.00
Aug-17	24,691.01	796.48	0.00	301	6,597.06	212.81	31,288.07	1,009.29	0.00	0.00	31,288.07	1,009.29	6,682.40	215.56	0.21	588.33	23.12	21.98
Sep-17	27,257.46	908.58	3,973.78	172	3,731.96	124.40	30,989.42	1,032.98	0.00	0.00	30,989.42	1,032.98	7,167.68	238.92	0.23	333.24	22.61	21.92
Total 17	285,345.77		25,332.67	2,514	54,268.99		339,614.76		0.00		339,614.76		79,383.04			6,652.37	263.05	
Average17	23,778.81	784.00	2,111.06	210	4,522.42	148.52	28,301.23	932.51	0.00	0.00	28,301.23	932.51	6,615.25	218.39	0.23	554.36	21.92	
Oct-17	24,449.62	788.70	6,574.18	6	112.67	3.63	24,562.29	792.33	0.00	0.00	24,562.29	792.33	5,305.45	171.14	0.22	526.36	14.98	22.04
Nov-17	24,249.26	808.31	792.68	279	6,017.67	200.59	30,266.93	1,006.90	0.00	0.00	30,266.93	1,006.90	7,044.69	234.82	0.23	575.01	22.53	21.97
Dec-17	22,843.90	736.90	2,640.50	194	4,148.95	133.84	26,992.85	870.74	0.00	0.00	26,992.85	870.74	6,734.91	217.26	0.25	732.89	23.34	21.88
Jan-18	24,956.87	805.06	6,028.07	70	1,493.72	48.16	26,450.59	853.24	0.00	0.00	26,450.59	853.24	7,556.99	243.77	0.29	707.45	23.05	21.79
Feb-18	23,198.79	773.29	4,020.45	138	2,988.39	99.61	26,187.18	872.91	0.00	0.00	26,187.18	872.91	6,747.48	224.92	0.26	668.03	22.14	21.69
Mar-18	20,373.50	657.21	2,462.18	236	5,034.89	162.42	25,408.39	819.63	0.00	0.00	25,408.39	819.63	6,010.38	193.88	0.24	705.98	18.02	22.10
Apr-18	23,294.37	776.48	0.00	335	7,223.91	240.80	30,518.28	1,017.28	0.00	0.00	30,518.28	1,017.28	6,652.15	221.74	0.22	661.48	22.08	21.93
May-18	20,009.94	645.48	0.00	333	7,230.65	233.25	27,240.59	878.73	0.00	0.00	27,240.59	878.73	7,930.52	255.82	0.29	689.93	23.94	21.91
Jun-18	24,149.13	804.97	0.00	305	6,614.11	220.47	30,763.24	1,025.44	0.00	0.00	30,763.24	1,025.44	6,940.41	231.35	0.23	715.46	20.79	21.68
Jul-18	23,012.73	767.09	0.00	332	7,214.64	240.49	30,227.37	1,007.58	0.00	0.00	30,227.37	1,007.58	7,428.73	247.62	0.25	570.31	22.44	21.59
Aug-18	26,262.28	847.17	0.00	330	7,154.50	230.79	33,416.78	1,077.96	0.00	0.00	33,416.78	1,077.96	7,765.86	250.51	0.23	682.98	22.79	21.56
Sep-18	22,850.11	761.67	0.00	291	6,237.35	207.91	29,087.46	969.58	0.00	0.00	29,087.46	969.58	7,735.40	257.85	0.27	637.65	23.38	21.62
Total 18	279,650.50		22,518.06	2,849	61,471.45		341,121.95		0.00		341,121.95		83,852.97			7,873.53	259.48	
Average18	23,304.21	764.36	1,876.51	237	5,122.62	168.50	28,426.83	932.86	0.00	0.00	28,426.83	932.86	6,987.75	229.22	0.25	656.13	21.62	

Pasco County Waste - to - Energy Tonnage Report

MONTH/ YEAR	WEST PASCO		EAST PASCO TONNAGE HAULED OUT (Info Only)	EAST PASCO			TOTAL PASCO	DAILY AVG	HERNANDO		PROCESSABLE WASTE		ASH		% ASH/ MSW	RECYCLING TOTAL TONS	MEGA WATTS	
	TONS	DAILY AVG		LOADS	TONS	DAILY AVG			WASTE	DAILY AVG	TOTAL TONS	DAILY AVG	TOTAL TONS	DAILY AVG			MONTHLY GEN.	12 MONTH ROLLING AVERAGE
Oct-12	21,498.02	693.48	0.00	229	5,055.93	163.09	26,553.95	856.58	0.00	0.00	26,553.95	856.58	5,040.41	162.59	0.19	331.58	15.58	20.78
Nov-12	20,844.04	694.80	0.00	229	4,965.76	165.53	25,809.80	860.33	0.00	0.00	25,809.80	860.33	6,731.67	224.39	0.26	318.34	23.72	20.79
Dec-12	20,729.48	668.69	0.00	227	4,985.57	160.82	25,717.05	829.52	0.00	0.00	25,717.05	829.52	7,238.16	233.49	0.28	323.13	23.40	20.84
Jan-13	22,137.05	714.10	0.00	268	5,973.72	192.70	28,110.77	906.80	0.00	0.00	28,110.77	906.80	6,662.24	214.91	0.24	396.93	22.09	20.77
Feb-13	19,637.04	701.32	0.00	223	4,893.85	174.78	24,530.89	876.10	0.00	0.00	24,530.89	876.10	5,728.97	204.61	0.23	377.74	20.71	20.93
Mar-13	21,053.51	679.15	0.00	249	5,496.08	177.29	26,549.59	856.44	0.00	0.00	26,549.59	856.44	4,993.54	161.08	0.19	325.66	15.23	20.69
Apr-13	22,463.81	748.79	0.00	273	6,063.50	202.12	28,527.31	950.91	0.00	0.00	28,527.31	950.91	6,920.64	230.69	0.24	387.15	23.19	20.62
May-13	21,483.10	693.00	0.00	242	5,535.85	178.58	27,018.95	871.58	0.00	0.00	27,018.95	871.58	7,292.25	235.23	0.27	309.15	23.91	20.61
Jun-13	20,707.27	690.24	0.00	233	5,155.19	171.84	25,862.46	862.08	0.00	0.00	25,862.46	862.08	6,161.26	205.38	0.24	311.20	21.81	20.56
Jul-13	23,842.30	769.11	0.00	255	5,650.76	182.28	29,493.06	951.39	0.00	0.00	29,493.06	951.39	7,323.12	236.23	0.25	347.37	21.68	20.66
Aug-13	21,388.94	689.97	0.00	242	5,335.15	172.10	26,724.09	862.07	0.00	0.00	26,724.09	862.07	6,504.90	209.84	0.24	352.82	19.94	20.78
Sep-13	19,995.74	666.52	0.00	228	4,982.89	166.10	24,978.63	832.62	0.00	0.00	24,978.63	832.62	6,263.23	208.77	0.25	363.11	19.56	20.90
Total 13	255,780.30		0.00	2,898	64,094.25		319,876.55		0.00		319,876.55		76,860.39			4,144.18	250.83	
Average13	21,315.03	700.77	0.00	242	5,341.19	175.60	26,656.38	876.37	0.00	0.00	26,656.38	876.37	6,405.03	210.60	0.24	345.35	20.90	
Oct-13	20,927.91	675.09	0.00	249	5,524.55	178.21	26,452.46	853.31	0.00	0.00	26,452.46	853.31	4,973.40	160.43	0.19	369.17	14.86	20.84
Nov-13	19,773.80	659.13	0.00	233	5,204.16	173.47	24,977.96	832.60	0.00	0.00	24,977.96	832.60	7,047.89	234.93	0.28	347.08	22.80	20.77
Dec-13	21,364.24	689.17	0.00	285	6,337.92	204.45	27,702.16	893.62	0.00	0.00	27,702.16	893.62	6,995.33	225.66	0.25	326.87	23.04	20.74
Jan-14	20,790.92	670.67	0.00	275	6,080.30	196.14	26,871.22	866.81	0.00	0.00	26,871.22	866.81	5,930.14	191.29	0.22	450.74	21.92	20.72
Feb-14	19,309.22	689.62	0.00	250	5,587.86	199.57	24,897.08	889.18	0.00	0.00	24,897.08	889.18	5,920.55	211.45	0.24	408.79	20.66	20.72
Mar-14	21,090.88	680.35	0.00	296	6,721.84	216.83	27,812.72	897.18	0.00	0.00	27,812.72	897.18	3,442.29	111.04	0.12	388.59	0.62	19.50
Apr-14	21,120.22	704.01	0.00	284	6,383.33	212.78	27,503.55	916.79	0.00	0.00	27,503.55	916.79	6,396.24	213.21	0.23	753.21	21.88	19.39
May-14	21,381.58	689.73	0.00	253	5,703.43	183.98	27,085.01	873.71	0.00	0.00	27,085.01	873.71	6,892.66	222.34	0.25	294.21	22.91	19.31
Jun-14	24,209.24	806.97	1,195.50	206	4,522.63	150.75	28,731.87	957.73	0.00	0.00	28,731.87	957.73	6,651.99	221.73	0.23	867.60	21.67	19.29
Jul-14	22,068.26	711.88	0.00	258	5,791.77	186.83	27,860.03	898.71	0.00	0.00	27,860.03	898.71	7,760.80	250.35	0.28	353.23	23.37	19.44
Aug-14	20,218.17	652.20	0.00	250	5,443.54	175.60	25,661.71	827.80	0.00	0.00	25,661.71	827.80	6,905.28	222.75	0.27	381.22	23.47	19.73
Sep-14	21,765.65	725.52	0.00	255	5,743.53	191.45	27,509.18	916.97	0.00	0.00	27,509.18	916.97	6,548.30	218.28	0.24	340.22	21.76	19.91
Total 14	254,020.09		1,195.50	3,094	69,044.86		323,064.95		0.00		323,064.95		75,464.87			5,280.93	238.96	
Average14	21,168.34	696.20	99.63	258	5,753.74	189.17	26,922.08	885.37	0.00	0.00	26,922.08	885.37	6,286.74	206.96	0.23	440.08	19.91	
Oct-14	21,440.98	691.64	0.00	275	5,861.08	189.07	27,302.06	880.71	0.00	0.00	27,302.06	880.71	5,237.49	168.95	0.19	327.40	14.83	19.91
Nov-14	19,182.38	639.41	0.00	245	5,354.51	178.48	24,536.89	817.90	0.00	0.00	24,536.89	817.90	6,067.99	202.27	0.25	420.39	22.20	19.86
Dec-14	23,630.53	762.28	0.00	317	6,870.62	221.63	30,501.15	983.91	0.00	0.00	30,501.15	983.91	6,530.63	210.67	0.21	407.98	22.50	19.82
Jan-15	22,255.21	717.91	0.00	293	6,387.76	206.06	28,642.97	923.97	0.00	0.00	28,642.97	923.97	6,548.92	211.26	0.23	495.71	23.53	19.95
Feb-15	19,681.98	702.93	0.00	267	5,884.78	210.17	25,566.76	913.10	0.00	0.00	25,566.76	913.10	6,337.37	226.33	0.25	357.17	23.06	20.15
Mar-15	24,028.75	775.12	575.06	294	6,644.36	214.33	30,673.11	989.46	0.00	0.00	30,673.11	989.46	4,654.86	150.16	0.15	384.56	13.36	21.21
Apr-15	22,126.72	737.56	0.00	299	6,798.35	226.61	28,925.07	964.17	0.00	0.00	28,925.07	964.17	6,528.72	217.62	0.23	390.91	23.72	21.37
May-15	21,425.59	691.15	0.00	259	5,766.89	186.03	27,192.48	877.18	0.00	0.00	27,192.48	877.18	7,091.90	228.77	0.26	398.13	23.81	21.44
Jun-15	22,612.79	753.76	0.00	276	6,124.56	204.15	28,737.35	957.91	0.00	0.00	28,737.35	957.91	6,338.58	211.29	0.22	337.63	21.71	21.44
Jul-15	23,316.57	752.15	0.00	266	6,001.41	193.59	29,317.98	945.74	0.00	0.00	29,317.98	945.74	7,085.65	228.57	0.24	341.88	23.09	21.42
Aug-15	22,541.07	727.13	0.00	269	6,158.58	198.66	28,699.65	925.80	0.00	0.00	28,699.65	925.80	7,039.96	227.10	0.25	363.26	22.74	21.36
Sep-15	21,834.43	727.81	0.00	252	5,691.75	189.73	27,526.18	917.54	0.00	0.00	27,526.18	917.54	7,259.31	241.98	0.26	348.07	22.57	21.43
Total 15	264,077.00		575.06	3,312	73,544.65		337,621.65		0.00		337,621.65		76,721.38			4,573.09	257.14	
Average15	22,006.42	723.24	47.92	276	6,128.72	201.54	28,135.14	924.78	0.00	0.00	28,135.14	924.78	6,393.45	210.41	0.23	381.09	21.43	

Pasco County Waste - to - Energy Tonnage Report

MONTH/ YEAR	WEST PASCO		EAST PASCO TONNAGE HAULED OUT (Info Only)	EAST PASCO			TOTAL PASCO	DAILY AVG	HERNANDO		PROCESSABLE WASTE		ASH		% ASH/ MSW	RECYCLING TOTAL TONS	MEGA WATTS	
	TONS	DAILY AVG		LOADS	TONS	DAILY AVG			WASTE	DAILY AVG	TOTAL TONS	DAILY AVG	TOTAL TONS	DAILY AVG			MONTHLY GEN.	12 MONTH ROLLING AVERAGE
Oct-09	21,180.31	683.24	579.65	224	4,689.85	151.29	25,870.16	834.52	1,131.26	36.49	27,001.42	871.01	4,986.25	160.85	0.18	276.07	12.28	19.50
Nov-09	18,327.79	610.93	5,462.28	39	835.06	27.84	19,162.85	638.76	1,557.75	51.93	20,720.60	690.69	5,685.49	189.52	0.27	253.02	15.08	19.05
Dec-09	24,929.69	804.18	3,528.17	125	2,738.73	88.35	27,668.42	892.53	1,738.08	56.07	29,406.50	948.60	8,889.75	286.77	0.30	317.48	24.14	19.20
Jan-10	20,943.53	675.60	3,765.62	102	2,280.66	73.57	23,224.19	749.17	1,684.42	54.34	24,908.61	803.50	6,716.77	216.67	0.27	332.22	22.04	19.29
Feb-10	20,347.53	726.70	3,163.23	110	2,447.53	87.41	22,795.06	814.11	1,659.21	59.26	24,454.27	873.37	6,700.33	239.30	0.27	309.11	22.70	19.35
Mar-10	25,477.85	821.87	4,766.10	117	2,572.59	82.99	28,050.44	904.85	2,013.48	64.95	30,063.92	969.80	7,149.46	230.63	0.24	327.01	20.86	20.09
Apr-10	21,496.75	716.56	8,074.10	5	112.08	3.74	21,608.83	720.29	1,870.88	62.36	23,479.71	782.66	4,223.04	140.77	0.18	304.74	10.55	19.00
May-10	25,555.46	824.37	3,285.96	116	2,468.65	79.63	28,024.11	904.00	1,742.49	56.21	29,766.60	960.21	9,038.49	291.56	0.30	273.65	23.61	19.15
Jun-10	21,996.23	733.21	0.00	246	5,364.54	178.82	27,360.77	912.03	1,829.57	60.99	29,190.34	973.01	7,315.29	243.84	0.25	278.81	23.18	19.28
Jul-10	22,219.65	716.76	0.00	231	4,975.42	160.50	27,195.07	877.26	1,836.12	59.23	29,031.19	936.49	7,407.31	238.95	0.26	289.54	22.37	19.85
Aug-10	23,004.90	742.09	0.00	229	5,080.87	163.90	28,085.77	905.99	1,849.12	59.65	29,934.89	965.64	7,295.74	235.35	0.24	267.65	21.30	19.97
Sep-10	20,800.48	693.35	1,806.35	136	3,003.45	100.12	23,803.93	793.46	1,596.96	53.23	25,400.89	846.70	7,326.15	244.21	0.29	280.57	23.26	20.11
Total 10	266,280.17		34,431.46	1,680	36,569.43		302,849.60		20,509.34		323,358.94		82,734.07			3,509.87	241.37	
Average10	22,190.01	729.07	2,869.29	140	3,047.45	99.84	25,237.47	828.92	1,709.11	56.22	26,946.58	885.14	6,894.51	226.53	0.26	292.49	20.11	
Oct-10	17,909.66	577.73	4,346.34	13	265.02	8.55	18,175.27	586.28	0.59	0.02	18,175.27	586.30	4,160.13	134.20	0.23	270.18	11.72	20.07
Nov-10	24,637.35	821.25	466.74	111	2,439.91	81.33	27,077.26	902.58	0.00	0.00	27,077.26	902.58	7,310.48	243.68	0.27	276.20	23.88	20.80
Dec-10	23,650.70	762.93	0.00	241	5,245.42	169.21	28,896.12	932.13	0.00	0.00	28,896.12	932.13	8,022.12	258.78	0.28	309.78	21.71	20.60
Jan-11	21,474.94	692.74	0.00	262	5,853.45	188.82	27,328.39	881.56	0.00	0.00	27,328.39	881.56	6,763.71	218.18	0.25	309.38	21.58	20.56
Feb-11	20,480.04	731.43	0.00	240	5,323.67	190.13	25,803.71	921.56	0.00	0.00	25,803.71	921.56	6,542.47	233.66	0.25	275.50	23.79	20.65
Mar-11	21,972.72	708.80	0.00	312	6,941.55	223.92	28,914.27	932.72	0.00	0.00	28,914.27	932.72	6,453.41	208.17	0.22	332.08	19.85	20.57
Apr-11	23,416.69	780.56	2,531.82	161	3,517.21	117.24	26,933.90	897.80	0.00	0.00	26,933.90	897.80	5,201.95	173.40	0.19	310.28	13.43	20.81
May-11	26,260.08	847.10	0.00	232	5,062.33	163.30	31,322.41	1,010.40	0.00	0.00	31,322.41	1,010.40	8,953.86	288.83	0.29	286.99	24.24	20.86
Jun-11	20,625.71	687.52	0.00	226	5,006.81	166.89	25,632.52	854.42	0.00	0.00	25,632.52	854.42	7,263.76	242.13	0.28	291.88	23.28	20.87
Jul-11	20,129.21	649.33	0.00	220	4,870.67	157.12	24,999.88	806.45	0.00	0.00	24,999.88	806.45	6,671.64	215.21	0.27	268.21	21.80	20.82
Aug-11	22,198.98	716.10	0.00	231	5,118.22	165.10	27,317.20	881.20	0.00	0.00	27,317.20	881.20	7,165.84	231.16	0.26	285.02	20.21	20.73
Sep-11	20,698.35	689.95	0.00	216	4,756.15	158.54	25,454.50	848.48	0.00	0.00	25,454.50	848.48	6,748.25	224.94	0.27	274.12	22.09	20.63
Total 11	263,454.43		7,344.90	2,465	54,400.41		317,855.43		0.59		317,855.43		81,257.62			3,489.62	247.58	
Average11	21,954.54	722.12	612.08	205	4,533.37	149.18	26,487.95	871.30	0.05	0.00	26,487.95	871.30	6,771.47	222.70	0.25	290.80	20.63	
Oct-11	19,732.17	636.52	0.00	217	4,776.34	154.08	24,508.51	790.60	0.00	0.00	24,508.51	790.60	4,764.54	153.69	0.19	245.48	13.45	20.78
Nov-11	20,731.22	691.04	0.00	231	5,110.60	170.35	25,841.82	861.39	0.00	0.00	25,841.82	861.39	6,727.09	224.24	0.26	290.48	23.56	20.75
Dec-11	20,739.42	669.01	0.00	239	5,259.97	169.68	25,999.39	838.69	0.00	0.00	25,999.39	838.69	7,200.92	232.29	0.28	342.21	22.88	20.85
Jan-12	20,797.58	670.89	0.00	250	5,451.30	175.85	26,248.88	846.74	0.00	0.00	26,248.88	846.74	6,908.97	222.87	0.26	341.10	22.86	20.95
Feb-12	20,373.11	702.52	0.00	238	5,277.71	181.99	25,650.82	884.51	0.00	0.00	25,650.82	884.51	5,951.54	205.23	0.23	281.42	18.85	20.54
Mar-12	22,771.24	734.56	0.00	273	6,050.52	195.18	28,821.76	929.73	0.00	0.00	28,821.76	929.73	5,655.72	182.44	0.20	353.28	18.06	20.39
Apr-12	21,028.65	700.96	0.00	243	5,393.95	179.80	26,422.60	880.75	0.00	0.00	26,422.60	880.75	6,815.60	227.19	0.26	327.72	23.99	21.27
May-12	21,680.33	699.37	0.00	230	5,057.24	163.14	26,737.57	862.50	0.00	0.00	26,737.57	862.50	7,157.43	230.88	0.27	319.76	24.13	21.26
Jun-12	22,920.46	764.02	0.00	226	4,978.70	165.96	27,899.16	929.97	0.00	0.00	27,899.16	929.97	6,790.95	226.37	0.24	344.62	22.37	21.19
Jul-12	23,225.72	749.22	0.00	228	5,061.49	163.27	28,287.21	912.49	0.00	0.00	28,287.21	912.49	6,623.27	213.65	0.23	307.82	20.47	21.08
Aug-12	22,545.47	727.27	0.00	227	5,022.33	162.01	27,567.80	889.28	0.00	0.00	27,567.80	889.28	5,953.22	192.04	0.22	306.89	18.48	20.93
Sep-12	19,741.69	658.06	0.00	197	4,383.66	146.12	24,125.35	804.18	0.00	0.00	24,125.35	804.18	5,776.06	192.54	0.24	255.44	18.12	20.60
Total 12	256,287.06		0.00	2,797	61,823.81		318,110.87		0.00		318,110.87		76,325.31			3,716.22	247.23	
Average12	21,357.26	700.29	0.00	233	5,151.98	168.95	26,509.24	869.24	0.00	0.00	26,509.24	869.24	6,360.44	208.62	0.24	309.69	20.60	

Pasco County Waste - to - Energy Tonnage Report

MONTH/ YEAR	WEST PASCO		EAST PASCO TONNAGE HAULED OUT (Info Only)	EAST PASCO			TOTAL PASCO	DAILY AVG	HERNANDO		PROCESSABLE WASTE		ASH		% ASH/ MSW	RECYCLING TOTAL TONS	MEGA WATTS	
	TONS	DAILY AVG		LOADS	TONS	DAILY AVG			WASTE	DAILY AVG	TOTAL TONS	DAILY AVG	TOTAL TONS	DAILY AVG			MONTHLY GEN.	12 MONTH ROLLING AVERAGE
Oct 06	10,546.93	340.22		276	5,215.40	168.24	15,762.33	508.46	0.00	0.00	15,762.33	508.46	4,030.48	130.02	0.26	228.88	8.45	19.92
Nov 06	25,296.95	843.23		288	5,709.93	190.33	31,006.88	1,033.56	0.00	0.00	31,006.88	1,033.56	7,683.51	256.12	0.25	225.47	22.40	19.87
Dec 06	19,857.49	640.56		281	5,633.48	181.73	25,490.97	822.29	0.00	0.00	25,490.97	822.29	7,966.88	257.00	0.31	259.18	22.57	19.81
Jan 07	22,938.13	739.94		356	7,247.13	233.78	30,185.26	973.72	0.00	0.00	30,185.26	973.72	8,224.81	265.32	0.27	243.61	21.63	19.78
Feb 07	13,576.88	484.89		310	6,240.02	222.86	19,816.90	707.75	0.00	0.00	19,816.90	707.75	5,483.85	195.85	0.28	208.40	13.77	20.38
Mar 07	19,791.48	638.43		350	7,066.48	227.95	26,857.96	866.39	0.00	0.00	26,857.96	866.39	7,836.05	252.78	0.29	244.80	23.23	20.40
Apr 07	22,508.49	750.28		353	6,675.67	222.52	29,184.16	972.81	0.00	0.00	29,184.16	972.81	8,589.91	286.33	0.29	226.46	24.82	20.55
May 07	24,610.06	793.87		337	6,272.69	202.34	30,882.75	996.22	0.00	0.00	30,882.75	996.22	8,418.52	271.57	0.27	229.16	23.27	20.48
Jun 07	23,005.95	766.87		299	5,877.92	195.93	28,883.87	962.80	0.00	0.00	28,883.87	962.80	7,970.70	265.69	0.28	212.60	22.41	20.49
Jul 07	24,871.95	802.32		317	6,419.59	207.08	31,291.54	1,009.40	0.00	0.00	31,291.54	1,009.40	8,066.03	260.19	0.26	231.48	21.54	20.35
Aug 07	25,329.78	817.09		306	6,188.37	199.62	31,518.15	1,016.71	0.00	0.00	31,518.15	1,016.71	8,224.14	265.29	0.26	232.59	23.27	20.55
Sep 07	19,561.70	652.06		273	5,513.92	183.80	25,075.62	835.85	0.00	0.00	25,075.62	835.85	7,737.57	257.92	0.31	214.03	22.62	20.83
Total 07	251,895.79			3,746	74,060.60		325,956.39		0.00		325,956.39		90,232.45			2,756.66	249.97	
Average07	20,991.32	689.15		312	6,171.72	203.02	27,163.03	892.16	0.00	0.00	27,163.03	892.16	7,519.37	247.01	0.28	229.72	20.83	
Oct-07	23,045.19	743.39	1,192.10	264	5,314.99	171.45	28,360.18	914.84	0.00	0.00	28,360.18	914.84	6,414.49	206.92	0.23	236.18	16.26	21.48
Nov-07	24,251.52	808.38	2,144.93	187	3,926.72	130.89	28,178.24	939.27	0.00	0.00	28,178.24	939.27	8,458.92	281.96	0.30	222.26	24.72	21.67
Dec-07	24,771.61	799.08	1,151.92	258	5,225.58	168.57	29,997.19	967.65	0.00	0.00	29,997.19	967.65	7,999.79	258.06	0.27	268.78	23.93	21.79
Jan-08	28,076.22	905.68	3,115.75	106	2,179.14	70.29	30,255.36	975.98	0.00	0.00	30,255.36	975.98	7,498.77	241.90	0.25	302.92	22.44	21.86
Feb-08	24,399.87	841.37	4,912.95	72	1,553.42	53.57	25,953.29	894.94	0.00	0.00	25,953.29	894.94	7,618.26	262.70	0.29	272.48	24.00	22.71
Mar-08	26,275.89	847.61	3,002.83	197	4,112.23	132.65	30,388.12	980.26	0.00	0.00	30,388.12	980.26	7,653.65	246.89	0.25	288.24	21.89	22.60
Apr-08	25,885.92	862.86	6,682.62	3	6.98	0.23	25,892.90	863.10	0.00	0.00	25,892.90	863.10	5,242.98	174.77	0.20	281.17	14.77	21.76
May-08	24,052.97	775.90	3,833.15	88	1,892.19	61.04	25,945.16	836.94	0.00	0.00	25,945.16	836.94	8,597.32	277.33	0.33	189.34	24.11	21.83
Jun-08	23,703.87	790.13	1,478.31	183	3,914.60	130.49	27,618.47	920.62	0.00	0.00	27,618.47	920.62	8,001.32	266.71	0.29	274.88	24.52	22.00
Jul-08	26,972.89	870.09	157.74	271	5,652.08	182.33	32,624.97	1,052.42	0.00	0.00	32,624.97	1,052.42	7,842.84	252.99	0.24	287.84	20.65	21.93
Aug-08	23,829.86	768.71	689.07	220	4,596.17	148.26	28,426.03	916.97	0.00	0.00	28,426.03	916.97	7,686.09	247.94	0.27	260.51	23.18	21.92
Sep-08	22,866.26	762.21	993.43	196	4,022.79	134.09	26,889.05	896.30	0.00	0.00	26,889.05	896.30	7,762.81	258.75	0.29	261.42	21.78	21.85
Total 08	298,132.07		29,334.80	2,045	42,396.89		340,528.96		0.00		340,528.96		90,777.04			3,146.02	262.25	
Average08	24,844.34	814.62	2,444.57	170	3,533.07	115.32	28,377.41	929.94	0.00	0.00	28,377.41	929.94	7,564.75	248.08	0.27	262.17	21.85	
Oct-08	23,076.17	744.39	678.06	232	4,672.71	150.73	27,748.88	895.13	0.00	0.00	27,748.88	895.13	6,658.72	214.80	0.24	274.34	16.38	21.86
Nov-08	20,314.76	677.16	914.67	199	3,869.03	128.97	24,183.79	806.13	0.00	0.00	24,183.79	806.13	6,493.18	216.44	0.27	247.67	20.39	21.50
Dec-08	23,992.83	773.96	1,663.04	222	4,607.44	148.63	28,600.27	922.59	0.00	0.00	28,600.27	922.59	7,869.54	253.88	0.28	308.95	22.42	21.38
Jan-09	22,781.73	734.89	1,121.99	237	4,844.33	156.27	27,626.06	891.16	0.00	0.00	27,626.06	891.16	7,102.45	229.11	0.26	342.73	20.99	21.26
Feb-09	20,852.55	744.73	2,120.20	165	3,418.60	122.09	24,271.15	866.83	0.00	0.00	24,271.15	866.83	6,939.37	247.83	0.29	301.51	21.97	21.09
Mar-09	24,253.15	782.36	6,136.12	19	371.68	11.99	24,624.83	794.35	0.00	0.00	24,624.83	794.35	5,046.67	162.80	0.20	359.08	12.01	20.26
Apr-09	23,567.97	785.60	5,857.72	15	323.12	10.77	23,891.09	796.37	0.00	0.00	23,891.09	796.37	7,662.90	255.43	0.32	350.98	23.58	21.00
May-09	22,748.11	733.81	2,690.24	128	2,799.55	90.31	25,547.66	824.12	0.00	0.00	25,547.66	824.12	7,428.22	239.62	0.29	300.49	21.85	20.81
Jun-09	23,749.43	791.65	1,940.37	167	3,608.95	120.30	27,358.38	911.95	0.00	0.00	27,358.38	911.95	7,840.18	261.34	0.29	291.82	21.55	20.56
Jul-09	23,644.42	762.72	1,582.57	179	3,939.89	127.09	27,584.31	889.82	0.00	0.00	27,584.31	889.82	5,920.28	190.98	0.21	293.20	15.53	20.13
Aug-09	22,195.97	716.00	50.57	247	5,256.84	169.58	27,452.81	885.57	0.00	0.00	27,452.81	885.57	7,131.12	230.04	0.26	265.84	19.88	19.86
Sep-09	21,699.70	723.32	0.00	252	5,332.18	177.74	27,031.88	901.06	0.00	0.00	27,031.88	901.06	7,141.74	238.06	0.26	261.98	21.53	19.84
Total 09	272,876.79		24,755.55	2,062	43,044.32		315,921.11		0.00		315,921.11		83,234.47			3,598.59	238.06	
Average09	22,739.73	747.55	2,062.96	172	3,587.03	117.87	26,326.76	865.42	0.00	0.00	26,326.76	865.42	6,936.21	228.36	0.26	299.88	19.84	

Pasco County Waste - to - Energy Tonnage Report

MONTH/ YEAR	WEST PASCO		EAST PASCO TONNAGE HAULED OUT (Info Only)	EAST PASCO			TOTAL PASCO	DAILY AVG	HERNANDO		PROCESSABLE WASTE		ASH		% ASH/ MSW	RECYCLING TOTAL TONS	MEGA WATTS	
	TONS	DAILY AVG		LOADS	TONS	DAILY AVG			WASTE	DAILY AVG	TOTAL TONS	DAILY AVG	TOTAL TONS	DAILY AVG			MONTHLY GEN.	12 MONTH ROLLING AVERAGE
Oct 03	21,907.80	706.70		294	6,350.01	204.84	28,257.81	911.54	0.00	0.00	28,257.81	911.54	9,230.21	297.75	0.33	187.25	23.50	21.63
Nov 03	20,972.68	699.09		275	5,933.04	197.77	26,905.72	896.86	0.00	0.00	26,905.72	896.86	8,164.05	272.14	0.30	167.03	23.40	21.88
Dec 03	22,771.81	734.57		332	6,967.23	224.75	29,739.04	959.32	0.00	0.00	29,739.04	959.32	8,143.00	262.68	0.27	208.89	23.09	21.81
Jan 04	22,552.24	727.49		343	7,337.80	236.70	29,890.04	964.19	0.00	0.00	29,890.04	964.19	8,120.39	261.95	0.27	228.03	23.28	22.33
Feb 04	21,419.69	764.99		323	6,905.32	246.62	28,325.01	1,011.61	0.00	0.00	28,325.01	1,011.61	7,641.34	272.91	0.27	204.61	20.94	22.29
Mar 04	22,345.65	720.83		414	8,820.53	284.53	31,166.18	1,005.36	0.00	0.00	31,166.18	1,005.36	6,353.84	204.96	0.20	238.11	14.96	21.60
Apr 04	21,089.12	702.97		380	8,077.21	269.24	29,166.33	972.21	0.00	0.00	29,166.33	972.21	8,135.55	271.19	0.28	231.78	23.16	21.65
May 04	21,566.48	695.37		335	7,157.13	230.88	28,713.61	926.25	0.00	0.00	28,713.61	926.25	8,478.76	273.51	0.30	193.86	22.89	21.64
Jun 04	22,481.91	749.40		332	7,290.70	243.02	29,772.61	992.42	0.00	0.00	29,772.61	992.42	8,077.51	269.25	0.27	200.61	21.65	21.55
Jul 04	22,884.54	738.21		327	7,170.58	231.31	30,055.12	969.52	0.00	0.00	30,055.12	969.52	8,506.18	274.39	0.28	191.95	21.55	21.48
Aug 04	23,184.54	747.89		325	7,294.42	235.30	30,478.96	983.19	0.00	0.00	30,478.96	983.19	8,806.05	284.07	0.29	192.36	22.99	22.11
Sep 04	25,976.59	837.95		358	8,038.00	259.29	34,014.59	1,097.24	0.00	0.00	34,014.59	1,097.24	7,673.00	247.52	0.23	209.19	21.14	21.88
Total 04	269,143.05			4,038	87,341.97		356,485.02		0.00		356,485.02		97,329.88			2,453.67	262.55	
Average04	22,428.59	735.46		337	7,278.50	238.69	29,707.09	974.14	0.00	0.00	29,707.09	974.14	8,110.82	266.02	0.27	204.47	21.88	
Oct 04	11,736.44	378.59		348	7,596.30	245.04	19,332.74	623.64	0.00	0.00	19,332.74	623.64	5,604.91	180.80	0.29	203.23	13.96	21.08
Nov 04	20,613.33	687.11		355	7,711.99	257.07	28,325.32	944.18	0.00	0.00	28,325.32	944.18	7,959.89	265.33	0.28	190.51	22.07	20.97
Dec 04	16,018.98	516.74		383	7,825.57	252.44	23,844.55	769.18	0.00	0.00	23,844.55	769.18	8,656.58	279.24	0.36	212.85	22.86	20.95
Jan 05	16,927.80	546.06		362	7,795.85	251.48	24,723.65	797.54	0.00	0.00	24,723.65	797.54	7,976.42	257.30	0.32	236.81	21.39	20.80
Feb 05	21,715.73	700.51		156	3,703.64	119.47	25,419.37	819.98	0.00	0.00	25,419.37	819.98	7,553.34	243.66	0.30	204.62	21.34	20.83
Mar 05	10,396.45	335.37		416	8,951.55	288.76	19,348.00	624.13	0.00	0.00	19,348.00	624.13	5,046.05	162.78	0.26	230.44	10.64	20.47
Apr 05	16,988.68	566.29		377	7,981.43	266.05	24,970.11	832.34	0.00	0.00	24,970.11	832.34	7,970.34	265.68	0.32	225.52	22.19	20.39
May 05	23,638.44	787.95		353	6,962.90	232.10	30,601.34	1,020.04	0.00	0.00	30,601.34	1,020.04	8,921.38	297.38	0.29	221.92	23.44	20.43
Jun 05	25,477.24	849.24		329	6,904.78	230.16	32,382.02	1,079.40	0.00	0.00	32,382.02	1,079.40	8,355.30	278.51	0.26	211.55	21.72	20.44
Jul 05	24,432.32	814.41		319	6,790.55	226.35	31,222.87	1,040.76	0.00	0.00	31,222.87	1,040.76	8,620.73	287.36	0.28	198.12	22.74	20.54
Aug 05	25,750.36	830.66		330	6,977.37	225.08	32,727.73	1,055.73	0.00	0.00	32,727.73	1,055.73	8,946.38	288.59	0.27	211.78	22.68	20.51
Sep 05	23,243.76	774.79		284	6,030.38	201.01	29,274.14	975.80	0.00	0.00	29,274.14	975.80	8,071.52	269.05	0.28	209.33	22.45	20.62
Total 05	236,939.53			4,012	85,232.31		322,171.84		0.00		322,171.84		93,682.84			2,556.68	247.48	
Average05	19,744.96	648.98		334	7,102.69	232.92	26,847.65	881.89	0.00	0.00	26,847.65	881.89	7,806.90	256.31	0.29	213.06	20.62	
Oct 05	15,396.01	496.65		284	6,085.76	196.31	22,602.52	692.96	0.00	0.00	22,602.52	692.96	5,620.72	181.31	0.26	210.89	13.34	20.57
Nov 05	27,035.70	901.19		66	817.45	27.25	27,853.15	928.44	0.00	0.00	27,853.15	928.44	8,211.93	273.73	0.29	226.55	22.98	20.65
Dec 05	30,948.94	998.35		27	138.61	4.48	31,087.75	1,002.83	0.00	0.00	31,087.75	1,002.83	8,190.64	264.21	0.26	232.48	23.34	20.69
Jan 06	21,468.13	692.52		22	98.10	3.16	21,566.23	695.68	0.00	0.00	21,566.23	695.68	7,913.01	255.26	0.37	250.93	22.03	20.74
Feb 06	14,635.31	522.69		19	102.16	3.65	14,737.47	526.34	0.00	0.00	14,737.47	526.34	4,476.19	159.86	0.30	208.37	6.53	19.51
Mar 06	25,897.81	835.41		337	6,908.60	222.86	32,806.41	1,058.27	0.00	0.00	32,806.41	1,058.27	7,786.17	251.17	0.24	262.62	22.92	20.53
Apr 06	18,632.38	621.08		292	5,941.64	198.05	24,574.02	819.13	0.00	0.00	24,574.02	819.13	7,631.53	254.38	0.31	238.33	23.10	20.61
May 06	15,526.66	623.44		308	6,116.43	197.30	31,643.09	1,020.74	0.00	0.00	31,643.09	1,020.74	8,877.02	197.30	0.19	232.74	24.05	20.66
Jun 06	22,036.18	734.54		282	5,648.05	188.27	27,684.23	922.81	0.00	0.00	27,684.23	922.81	7,877.40	262.58	0.28	220.05	22.38	20.71
Jul 06	25,419.09	819.97		251	5,144.73	165.96	30,563.82	985.93	0.00	0.00	30,563.82	985.93	8,473.91	273.35	0.28	210.32	23.10	20.74
Aug 06	24,626.89	794.42		263	5,414.21	174.65	30,041.10	969.07	0.00	0.00	30,041.10	969.07	7,794.06	251.42	0.26	254.41	20.97	20.60
Sep 06	17,854.76	595.16		255	5,193.99	173.13	23,048.75	768.29	0.00	0.00	23,048.75	768.29	7,284.48	242.82	0.32	249.71	19.19	20.33
Total 06	269,477.86			2,406	47,609.93		318,208.54		0.00		318,208.54		90,137.06			2,797.20	243.94	
Average06	22,456.49	736.28		201	3,967.49	129.59	26,517.38	865.87	0.00	0.00	26,517.38	865.87	7,511.42	238.95	0.28	233.10	20.33	

Pasco County Waste - to - Energy Tonnage Report

MONTH/ YEAR	WEST PASCO		EAST PASCO		TOTAL PASCO	DAILY AVG	HERNANDO		PLANT CITY		HILLSBOROUGH		SUMTER		CITRUS		PROCESSABLE WASTE		ASH		% ASH/ MSW	RECYCLING TOTAL TONS	MEGA WATTS	
	TONS	DAILY AVG	LOADS	TONS			WASTE	DAILY AVG	WASTE	DAILY AVG	WASTE	DAILY AVG	WASTE	DAILY AVG	TOTAL TONS	DAILY AVG	TOTAL TONS	DAILY AVG	MONTHLY GEN.	12 MONTH ROLLING AVERAGE				
Oct 00	17,608.74	568.02	334	5,053.61	163.02	22,662.35	731.04	2,924.19	94.33	2,116.51	68.34	0.00	0.00	0.00	0.00	0.00	27,705.05	893.71	5,435.60	175.34	0.20	183.12	14.05	18.80
Nov 00	17,291.66	576.40	369	5,892.07	196.40	23,183.93	772.80	2,733.58	91.12	2,066.29	68.88	0.00	0.00	0.00	0.00	0.00	27,983.80	932.79	8,294.53	276.48	0.30	193.41	25.84	19.50
Dec 00	16,628.92	536.42	360	5,721.84	184.58	22,350.76	720.99	2,725.21	87.91	2,061.24	66.49	0.00	0.00	0.00	0.00	0.00	27,137.21	875.39	7,743.33	249.78	0.29	200.16	23.89	19.59
Jan 01	18,491.68	660.42	371	6,013.80	214.78	24,505.48	875.20	2,932.30	104.73	2,020.83	72.17	0.00	0.00	22.63	0.81	0.00	30,543.67	985.28	8,585.58	276.95	0.28	232.66	24.25	20.19
Feb 01	18,389.54	593.21	456	7,374.52	237.89	25,764.06	831.10	3,158.17	101.89	2,595.95	63.74	0.00	0.00	0.00	0.00	0.00	31,518.58	1,016.73	8,125.29	262.11	0.26	240.79	22.30	21.05
Mar 01	16,385.88	546.20	393	6,267.91	208.93	22,653.79	755.13	3,057.81	101.93	2,194.39	73.15	0.00	0.00	0.00	0.00	0.00	27,905.99	930.20	7,918.58	263.95	0.28	219.32	22.93	21.78
May 01	8,777.52	283.15	382	5,991.90	193.29	14,769.42	476.43	1,569.50	50.64	2,176.86	70.22	0.00	0.00	0.00	0.00	0.00	18,516.18	597.30	5,701.30	183.91	0.31	208.60	14.96	21.68
Jun 01	18,992.74	633.09	364	5,573.56	185.79	24,566.30	818.88	0.00	0.00	2,437.41	78.63	0.00	0.00	0.00	0.00	0.00	26,881.73	896.06	7,934.15	264.47	0.30	190.56	22.31	21.84
Jul 01	20,798.19	670.91	371	5,624.45	181.43	26,422.64	852.34	0.00	0.00	2,437.41	78.63	0.00	0.00	0.00	0.00	0.00	28,860.05	930.97	8,766.29	282.78	0.30	187.53	21.88	21.69
Aug 01	20,775.34	670.17	385	5,621.69	181.34	26,397.03	851.52	0.00	0.00	2,501.88	80.71	0.00	0.00	0.00	0.00	0.00	28,898.91	932.22	8,426.93	271.84	0.29	197.70	21.48	21.82
Sep 01	19,161.68	638.72	348	5,209.76	173.66	24,371.44	812.38	0.00	0.00	2,200.55	73.35	0.00	0.00	0.00	0.00	0.00	26,571.99	885.73	8,176.71	272.56	0.31	169.00	22.82	21.82
Total 01	212,038.22		4,532	70,703.28		282,741.50		22,294.00		26,946.27		0.00		22.63		0.00	331,981.77		92,659.12			2,432.55	261.81	
Average01	17,669.85	581.76	378	5,891.94	193.85	23,561.79	775.61	1,857.83	61.29	2,245.52	73.80	0.00	0.00	1.89	0.07	0.00	27,665.15	910.71	7,721.59	254.15	0.28	202.71	21.82	
Oct 01	20,379.01	657.39	370	5,534.50	178.53	25,913.51	836.92	0.00	0.00	2,305.17	74.36	0.00	0.00	0.00	0.00	0.00	28,218.68	910.28	6,727.69	217.00	0.24	188.14	14.87	21.89
Nov 01	18,791.62	626.39	366	5,662.29	188.74	24,453.91	815.13	0.00	0.00	2,205.50	73.52	0.00	0.00	0.00	0.00	0.00	26,559.41	886.65	7,414.02	247.13	0.28	197.67	22.10	21.57
Dec 01	18,995.06	612.74	372	5,716.14	184.39	24,711.20	797.14	0.00	0.00	2,282.05	73.61	0.00	0.00	0.00	0.00	0.00	26,993.25	870.75	8,014.61	258.52	0.30	186.97	23.87	21.57
Jan 02	21,146.97	682.16	416	6,597.23	212.81	27,744.20	894.97	0.00	0.00	2,393.67	77.22	0.00	0.00	0.00	0.00	0.00	30,137.87	972.19	8,124.15	262.07	0.27	235.98	21.87	21.37
Feb 02	19,033.84	679.78	362	5,827.00	208.11	24,860.84	887.89	0.00	0.00	2,225.23	79.47	0.00	0.00	0.00	0.00	0.00	27,086.07	967.36	7,355.20	262.69	0.27	199.16	22.72	21.18
Mar 02	21,388.13	689.94	424	6,647.97	214.45	28,036.10	904.39	0.00	0.00	2,487.14	80.23	0.00	0.00	0.00	0.00	0.00	30,523.24	984.62	7,455.75	240.51	0.24	214.94	21.88	21.14
Apr 02	22,061.82	735.39	419	6,475.94	215.86	28,537.76	951.26	0.00	0.00	2,600.72	86.69	0.00	0.00	0.00	0.00	0.00	31,138.48	1,037.95	8,089.54	269.85	0.26	246.63	22.04	21.07
May 02	17,538.90	565.77	383	5,691.56	183.60	23,230.46	749.37	0.00	0.00	2,522.53	81.37	0.00	0.00	0.00	0.00	0.00	25,732.99	830.74	7,265.80	234.38	0.28	207.91	19.31	21.43
Jun 02	6,827.76	227.59	395	6,082.16	202.74	12,909.92	430.33	0.00	0.00	2,468.99	82.30	0.00	0.00	0.00	0.00	0.00	15,378.91	512.63	3,610.66	120.36	0.23	183.79	6.95	20.15
Jul 02	21,292.03	686.84	426	6,691.30	215.85	27,983.33	902.69	0.00	0.00	2,608.19	84.14	0.00	0.00	0.00	0.00	0.00	30,591.52	988.02	8,632.40	278.46	0.28	196.93	21.76	20.14
Aug 02	21,366.64	689.25	392	6,022.19	194.26	27,388.83	883.51	0.00	0.00	2,464.26	79.49	0.00	0.00	0.00	0.00	0.00	29,853.09	963.00	8,373.36	270.11	0.28	196.70	21.82	20.17
Sep 02	20,926.76	675.06	374	5,845.75	188.57	26,772.51	863.63	0.00	0.00	2,277.03	73.45	0.00	0.00	0.00	0.00	0.00	29,049.54	937.08	8,687.89	280.25	0.30	193.45	23.21	20.20
Total 02	229,748.54		4,699	72,794.03		302,542.57		0.00		28,840.48		0.00		0.00		0.00	331,383.05		89,750.06			2,450.27	242.38	
Average02	19,145.71	627.36	392	6,066.17	198.99	25,211.88	826.35	0.00	0.00	2,403.37	78.82	0.00	0.00	0.00	0.00	0.00	27,615.25	905.17	7,479.17	245.09	0.27	204.19	20.20	
Oct 02	20,783.03	670.42	418	6,563.13	211.71	27,346.16	882.13	0.00	0.00	2,512.95	81.06	0.00	0.00	0.00	0.00	0.00	29,859.11	963.20	7,165.25	231.14	0.24	210.48	14.65	20.18
Nov 02	19,402.73	646.76	384	6,155.20	205.17	25,557.93	851.93	0.00	0.00	2,150.99	71.69	0.00	0.00	0.00	0.00	0.00	27,708.64	923.62	7,566.44	252.21	0.27	208.35	20.47	20.04
Dec 02	21,642.76	698.15	395	6,785.42	218.88	28,428.18	917.04	0.00	0.00	2,675.91	86.32	0.00	0.00	0.00	0.00	0.00	31,104.09	1,003.36	8,505.26	274.36	0.27	198.68	23.87	20.04
Jan 03	20,844.62	672.41	320	6,628.12	213.81	27,472.74	886.22	0.00	0.00	0.00	0.00	0.00	0.00	0.00	0.00	0.00	27,472.74	886.22	6,768.12	218.33	0.25	236.63	17.06	19.64
Feb 03	20,124.34	718.73	307	6,451.19	230.40	26,575.53	949.13	0.00	0.00	0.00	0.00	0.00	0.00	0.00	0.00	0.00	26,575.53	949.13	7,267.98	259.57	0.27	211.58	21.43	19.54
Mar 03	24,129.00	778.35	389	8,205.28	264.69	32,334.28	1,043.04	0.00	0.00	0.00	0.00	0.00	0.00	0.00	0.00	0.00	32,334.28	1,043.04	8,936.85	288.29	0.28	229.31	23.30	19.65
Apr 03	22,272.56	742.42	335	6,934.84	231.16	29,207.40	973.58	0.00	0.00	0.00	0.00	0.00	0.00	0.00	0.00	0.00	29,207.40	973.58	8,212.96	273.77	0.28	232.25	22.51	19.69
May 03	21,440.00	691.61	311	6,373.03	205.58	27,813.03	897.19	0.00	0.00	0.00	0.00	0.00	0.00	0.00	0.00	0.00	27,813.03	897.19	8,507.66	274.44	0.31	203.34	22.98	20.00
Jun 03	21,341.82	711.39	292	6,111.42	203.71	27,453.24	915.11	0.00	0.00	0.00	0.00	0.00	0.00	0.00	0.00	0.00	27,453.24	915.11	8,796.12	293.20	0.32	176.59	22.72	21.31
Jul 03	22,393.41	746.45	307	6,476.41	215.88	28,869.82	962.33	0.00	0.00	0.00	0.00	0.00	0.00	0.00	0.00	0.00	28,869.82	962.33	9,105.20	303.51	0.32	181.15	22.47	21.37
Aug 03	20,996.35	699.88	288	6,052.84	201.76	27,049.19	901.64	0.00	0.00	0.00	0.00	0.00	0.00	0.00	0.00	0.00	27,049.19	901.64	6,455.99	215.20	0.24	180.28	15.43	20.84
Sep 03	21,239.93	708.00	294	6,179.85	206.00	27,419.78	913.99	0.00	0.00	0.00	0.00	0.00	0.00	0.00	0.00	0.00	27,419.78	913.99	9,332.65	311.09	0.34	182.61	23.88	20.90
Total 03	256,810.55		4,040	78,916.73		335,527.28		0.00		7,339.57		0.00		0.00		0.00	342,866.85		96,620.48			2,451.45	250.76	
Average03	21,384.21	707.05	337	6,576.39	217.40	27,960.61	924.44	0.00	0.00	611.63	19.92	0.00	0.00	0.00	0.00	0.00	28,572.24	944.37	8,051.71	266.26	0.28	204.29	20.90	

Pasco County Waste - to - Energy Tonnage Report

MONTH/ YEAR	WEST PASCO		EAST PASCO		TOTAL PASCO	DAILY AVG	HERNANDO		PLANT CITY		HILLSBOROUGH		SUMTER		CITRUS		PROCESSABLE WASTE		ASH		% ASH/ MSW	RECYCLING TOTAL TONS	MEGA WATTS	
	TONS	DAILY AVG	LOADS	TONS			WASTE	DAILY AVG	WASTE	DAILY AVG	WASTE	DAILY AVG	WASTE	DAILY AVG	WASTE	DAILY AVG	TOTAL TONS	DAILY AVG	TOTAL TONS	DAILY AVG			MONTHLY GEN.	12 MONTH ROLLING AVERAGE
Oct 97	15,513.19	500.43	319	5,216.93	168.29	20,730.12	668.71	3,119.80	100.64	1,936.72	62.47	0.00	0.00	0.00	0.00	0.00	25,786.74	831.83	5,223.16	168.49	0.20	235.81	14.49	20.28
Nov 97	14,299.33	476.64	304	5,155.36	171.85	19,454.69	648.49	3,034.16	101.14	1,706.09	56.87	0.00	0.00	0.00	0.00	0.00	24,194.94	806.50	5,852.15	195.07	0.24	230.99	19.14	20.27
Dec 97	13,768.74	444.15	361	5,930.27	191.30	19,699.01	635.45	3,188.62	102.86	2,273.56	73.34	0.00	0.00	423.40	13.66	0.00	25,584.59	825.31	5,362.75	172.99	0.21	278.83	15.14	19.49
Jan 98	13,853.89	446.90	367	6,275.10	202.42	20,128.99	649.32	3,079.81	99.35	2,045.54	65.99	0.00	0.00	0.00	0.00	0.00	25,254.34	814.66	6,292.45	202.98	0.25	315.48	18.76	19.05
Feb 98	16,107.24	575.26	353	5,767.77	205.99	21,875.01	781.25	3,194.20	114.08	1,930.89	68.96	0.00	0.00	0.00	0.00	0.00	27,000.10	964.29	5,368.49	191.73	0.20	254.59	17.69	18.70
Mar 98	13,627.77	439.61	395	6,359.52	205.15	19,987.29	644.75	3,042.53	98.15	2,326.96	75.06	0.00	0.00	0.00	0.00	0.00	25,356.78	817.96	5,561.54	179.40	0.22	297.38	15.66	18.42
Apr 98	11,339.37	377.98	341	5,784.79	182.83	17,124.16	570.81	3,094.58	103.15	1,925.08	64.17	0.00	0.00	0.00	0.00	0.00	22,143.82	738.13	5,821.09	194.04	0.26	309.49	17.16	18.15
May 98	13,124.30	423.36	273	4,855.94	156.64	17,980.24	580.01	3,002.16	96.84	1,883.42	60.76	0.00	0.00	0.00	0.00	0.00	22,885.82	737.61	6,529.26	210.62	0.29	247.54	20.18	18.04
Jun 98	21,583.05	719.44	301	4,656.98	155.23	26,240.01	874.67	3,055.19	101.84	2,062.02	68.73	0.00	0.00	0.00	0.00	0.00	31,357.22	1,045.24	8,690.40	286.01	0.27	239.95	22.71	18.47
Jul 98	18,401.73	593.60	326	5,104.27	164.65	23,506.00	758.26	3,262.17	105.23	2,086.57	67.31	0.00	0.00	0.00	0.00	0.00	28,854.74	930.80	7,506.85	242.16	0.26	234.88	19.58	18.38
Aug 98	19,112.60	616.54	290	4,594.11	148.20	23,706.71	764.73	3,104.06	100.13	1,949.60	62.69	0.00	0.00	0.00	0.00	0.00	28,760.37	927.75	8,059.42	259.98	0.28	207.90	20.56	18.39
Sep 98	23,347.27	778.24	307	4,900.80	163.36	28,248.07	941.60	3,131.08	104.37	2,050.15	68.34	0.00	0.00	0.00	0.00	0.00	33,429.30	1,114.31	7,765.87	258.86	0.23	210.17	18.96	18.34
Total 98	194,078.48		3,937	64,601.82		258,680.30		37,308.46		24,176.60		0.00		533.89		0.00	320,588.76		77,923.43			3,094.01	220.02	
Average98	16,173.21	532.68	328	5,383.49	177.16	21,556.69	709.84	3,109.04	102.32	2,014.72	66.24	0.00	0.00	44.49	1.44	0.00	26,715.73	879.53	6,493.62	213.53	0.24	254.50	18.34	
Oct 98	14,667.38	473.14	317	5,107.30	164.75	19,774.68	637.89	2,929.82	94.51	1,988.08	64.13	0.00	0.00	0.00	0.00	0.00	24,692.58	796.53	6,323.34	203.98	0.26	219.57	17.11	18.55
Nov 98	14,754.34	491.81	312	5,098.87	169.96	19,853.21	661.77	2,929.13	97.84	1,949.52	64.98	0.00	0.00	0.00	0.00	0.00	24,731.86	824.40	7,269.20	242.31	0.29	204.33	21.52	18.75
Dec 98	21,597.22	696.68	367	5,761.07	185.84	27,358.29	882.53	3,148.87	101.68	2,088.04	67.36	0.00	0.00	0.00	0.00	0.00	32,595.20	1,051.46	8,356.99	269.58	0.26	240.60	23.85	19.48
Jan 99	17,213.04	555.26	351	5,723.07	184.62	22,936.11	739.87	3,111.49	100.37	1,975.48	63.73	0.00	0.00	0.00	0.00	0.00	28,023.08	903.97	7,548.65	243.50	0.27	251.26	22.75	19.81
Feb 99	15,919.94	568.57	333	5,460.20	195.01	21,380.14	763.58	2,969.13	106.04	1,851.58	66.13	0.00	0.00	0.00	0.00	0.00	26,200.85	935.74	6,737.37	240.62	0.26	221.26	22.75	20.23
Mar 99	12,498.81	403.19	416	6,696.45	216.01	19,195.26	619.20	3,151.08	101.65	2,419.25	78.04	0.00	0.00	0.00	0.00	0.00	24,765.59	798.89	7,002.06	225.87	0.28	260.11	19.30	20.53
Apr 99	12,625.31	420.84	377	6,176.59	205.89	18,801.90	626.73	3,106.92	103.56	2,042.14	68.07	0.00	0.00	0.00	0.00	0.00	32,950.96	798.37	5,684.31	189.46	0.24	248.91	16.06	20.44
May 99	12,938.85	417.38	354	5,686.16	183.42	18,625.01	600.81	2,963.97	95.81	2,084.93	67.26	0.00	0.00	0.00	0.00	0.00	29,873.91	763.67	7,435.24	239.85	0.31	203.96	22.21	20.61
Jun 99	17,857.04	595.23	359	5,885.79	196.19	23,742.83	791.43	3,137.76	104.59	2,251.67	75.06	0.00	0.00	0.00	0.00	0.00	29,132.26	971.08	7,227.83	240.93	0.25	218.98	20.74	20.45
Jul 99	17,240.03	556.13	339	5,395.02	174.03	22,635.05	730.16	3,148.72	101.57	2,168.11	70.58	0.00	0.00	0.00	0.00	0.00	27,971.88	902.32	8,449.44	272.56	0.30	209.04	21.75	20.63
Aug 99	16,893.97	544.97	340	5,375.33	173.40	22,269.30	718.36	3,100.81	100.03	2,249.71	71.28	0.00	0.00	0.00	0.00	0.00	27,579.82	889.67	7,690.56	248.08	0.28	186.89	19.29	20.52
Sep 99	16,875.70	562.52	320	5,075.23	169.17	21,950.93	731.70	2,982.89	99.43	2,007.74	66.92	0.00	0.00	0.00	0.00	0.00	26,941.56	898.05	7,057.90	235.26	0.26	187.61	18.57	20.49
Total 99	191,081.63		4,185	67,441.08		258,522.71		36,680.59		25,056.25		0.00		0.00		0.00	320,259.55		86,782.89			2,652.51	245.90	
Average99	15,923.47	523.81	349	5,620.09	184.86	21,543.56	708.67	3,056.72	100.55	2,088.02	68.63	0.00	0.00	0.00	0.00	0.00	26,888.30	877.85	7,231.91	237.67	0.27	221.04	20.49	
Oct 99	16,738.73	539.96	314	5,112.79	164.93	21,851.52	704.89	2,859.87	92.25	1,943.69	62.70	0.00	0.00	0.00	0.00	0.00	26,655.08	859.84	6,832.63	220.41	0.26	207.51	19.73	20.71
Nov 99	17,242.98	574.77	357	5,864.02	195.47	23,107.00	770.23	3,037.05	101.24	2,172.97	72.43	0.00	0.00	0.00	0.00	0.00	28,317.02	943.90	6,893.56	223.12	0.24	214.00	17.47	20.37
Dec 99	16,957.57	547.02	385	5,315.04	171.45	22,272.61	718.47	3,038.67	98.02	2,169.89	70.00	0.00	0.00	0.00	0.00	0.00	27,953.58	901.73	7,544.87	243.38	0.27	225.58	22.80	20.29
Jan 00	12,242.34	394.91	398	5,282.65	170.41	17,524.99	565.32	3,095.69	99.67	2,153.40	69.46	0.00	0.00	0.00	0.00	0.00	22,774.28	734.65	5,889.26	189.98	0.26	232.19	17.09	19.81
Feb 00	16,712.88	576.31	369	5,689.54	196.19	22,402.42	772.50	3,040.37	104.84	2,199.44	75.84	0.00	0.00	0.00	0.00	0.00	27,651.06	953.48	6,731.59	232.12	0.24	224.02	19.85	19.57
Mar 00	11,229.95	362.26	437	7,051.21	227.46	18,281.16	589.71	3,051.84	98.45	2,612.41	84.27	0.00	0.00	344.35	11.11	0.00	23,945.41	772.43	6,118.54	197.37	0.26	234.57	17.18	19.40
Apr 00	7,270.13	242.34	360	5,817.43	183.91	13,087.56	436.25	3,113.98	103.80	2,154.97	71.83	0.00	0.00	745.56	24.85	0.00	18,356.51	611.88	5,211.05	173.70	0.28	203.28	14.17	19.24
May 00	9,768.71	315.76	355	5,511.32	177.78	15,300.03	493.55	3,108.73	100.28	2,305.37	74.37	0.00	0.00	61.88	2.00	0.00	20,714.13	685.20	6,240.40	201.30	0.30	212.88	16.22	18.74
Jun 00	15,809.18	526.97	356	5,510.25	183.88	21,319.43	710.65	3,044.94	101.50	2,392.46	79.75	0.00	0.00	0.00	0.00	1.33	26,758.16	891.94	7,323.91	244.13	0.27	201.77	20.35	18.71
Jul 00	18,885.82	609.22	337	5,295.40	170.62	24,181.22	780.04	3,034.37	97.88	2,214.45	71.43	0.00	0.00	0.00	0.00	0.00	29,430.04	940.36	9,161.76	295.54	0.31	177.34	23.74	18.87
Aug 00	19,200.72	619.38	357	5,619.19	181.26	24,819.91	800.64	3,089.27	99.65	2,369.22	76.43	0.00	0.00	0.00	0.00	0.00	30,278.40	976.72	7,895.82	254.70	0.26	192.78	19.83	18.92
Sep 00	17,725.67	590.86	320	5,115.02	170.50	22,840.69	761.36	3,052.37	101.75	2,109.21	70.31	0.00	0.00	0.00	0.00	0.00	28,002.27	933.41	8,350.79	278.36	0.30	177.28	22.88	20.82
Total 00	179,804.68		4,345	67,183.86		246,988.54		36,567.35		26,797.48		0.00		1,151.79		1.33	310,835.94		83,994.18			2,503.20	231.31	
Average00	14,983.72	491.65	362	5,598.66	183.66	20,582.38	675.30	3,047.28	99.96	2,233.12	73.24	0.00	0.00	95.98	3.16	0.11	25,903.00	849.80	6,999.52	229.51	0.27	208.60	19.28	

Pasco County Waste - to - Energy Tonnage Report

MONTH/ YEAR	WEST PASCO		EAST PASCO			TOTAL PASCO	DAILY AVG	HERNANDO	DAILY AVG	PLANT CITY	DAILY AVG	HILLSBOROUGH	DAILY AVG	SUMTER	DAILY AVG	CITRUS	DAILY AVG	PROCESSABLE WASTE	DAILY AVG	TOTAL TONS	DAILY AVG	% ASH/ MSW	RECYCLING	MEGA MONTHLY GEN.	WATTS 12 MONTH ROLLING AVERAGE
	TONS		LOADS	TONS				WASTE		WASTE		WASTE		WASTE		WASTE		TOTAL TONS		TOTAL TONS			TOTAL TONS		
Oct 94	14,407.73	464.77	351	4,671.27	150.69	19,079.00	615.45	3,962.91	128.48	1,890.34	60.98	96.64	3.18	0.00	0.00	0.00	0.00	25,050.89	808.09	5,579.46	179.98	0.22	288.76	16.86	20.36
Nov 94	15,177.29	505.91	372	4,197.78	139.93	19,375.07	645.84	4,263.10	142.10	1,962.63	65.42	708.69	23.62	0.00	0.00	0.00	0.00	26,309.49	876.98	5,486.88	182.90	0.21	291.18	18.18	20.37
Dec 94	14,446.17	466.01	343	4,139.39	133.53	18,585.56	599.53	4,313.13	139.13	1,992.92	64.29	0.00	0.00	0.00	0.00	255.16	8.23	25,146.77	811.19	5,726.08	184.78	0.23	327.20	17.68	19.68
Jan 95	15,632.24	501.04	383	5,158.95	166.42	20,691.19	667.46	4,199.45	135.47	1,985.48	64.05	0.00	0.00	0.00	0.00	610.19	19.68	27,486.31	886.66	6,217.08	200.55	0.23	372.24	22.07	20.06
Feb 95	13,835.23	494.12	352	4,772.94	170.46	18,608.17	664.58	4,119.76	147.13	1,832.32	65.44	0.00	0.00	0.00	0.00	149.69	5.35	24,709.94	882.50	5,872.81	202.60	0.23	367.19	21.93	19.79
Mar 95	15,822.50	510.40	449	6,424.61	207.25	22,247.11	717.65	4,478.00	144.45	2,384.91	76.93	0.00	0.00	0.00	0.00	178.47	5.76	29,288.49	944.79	6,549.00	211.26	0.22	363.29	20.52	19.77
Apr 95	13,789.48	459.65	348	5,157.32	171.91	18,946.80	631.56	4,120.89	137.36	1,826.70	60.89	0.00	0.00	0.00	0.00	171.93	5.73	25,066.32	835.54	5,928.42	197.61	0.24	302.73	19.36	19.76
May 95	15,618.54	503.82	388	5,002.19	161.36	20,620.73	665.18	4,389.81	141.61	2,193.90	70.77	0.00	0.00	0.00	0.00	123.46	3.98	27,327.80	881.55	8,208.70	264.80	0.30	330.18	24.40	19.72
Jun 95	19,424.06	647.47	381	5,111.87	170.40	24,535.93	817.86	4,293.56	143.12	2,148.55	71.62	0.00	0.00	0.00	0.00	139.01	4.63	31,117.05	1,037.24	7,353.06	245.10	0.24	251.31	22.19	19.71
Jul 95	19,479.32	628.37	318	4,535.67	146.31	24,014.99	774.68	3,934.16	126.91	1,887.64	60.89	0.00	0.00	0.00	0.00	88.58	2.86	29,925.37	965.33	7,734.42	249.50	0.26	295.78	22.60	20.01
Aug 95	15,858.49	511.56	330	5,149.31	166.11	21,007.80	677.67	4,494.02	144.97	2,020.03	65.16	0.00	0.00	0.00	0.00	0.00	0.00	27,521.85	887.80	8,870.29	221.62	0.25	254.67	21.08	20.20
Sep 95	14,737.82	491.26	289	4,611.45	153.72	19,349.27	644.98	4,095.58	136.52	1,850.68	61.69	0.00	0.00	0.00	0.00	0.00	0.00	25,295.53	843.18	6,834.04	221.13	0.26	247.85	20.31	20.63
Total 95	188,128.87		4,304	58,932.75		247,061.62		50,684.37		23,976.10		807.33		0.00		1,716.49		324,245.91		77,962.22			3,692.38	247.60	
Average 95	15,677.41	515.36	359	4,911.06	161.51	20,588.47	676.87	4,223.70	138.94	1,998.01	65.68	67.28	2.23	0.00	0.00	143.04	4.69	27,020.49	888.40	6,496.85	213.49	0.24	307.70	20.63	
Oct 95	16,079.27	518.69	320	5,034.19	162.39	21,113.46	681.08	3,229.60	104.18	1,959.09	63.20	0.00	0.00	0.00	0.00	0.00	0.00	26,302.15	845.46	5,541.49	178.76	0.21	276.19	16.13	20.57
Nov 95	14,526.70	464.22	299	4,820.69	160.69	19,347.39	644.91	2,829.74	94.32	1,816.22	60.54	0.00	0.00	0.00	0.00	0.00	0.00	23,993.35	799.78	5,378.12	179.27	0.22	293.26	17.54	20.52
Dec 95	13,598.36	438.59	303	4,804.90	155.00	18,401.26	593.59	3,210.21	103.56	1,756.42	56.66	0.00	0.00	0.00	0.00	0.00	0.00	23,367.89	753.80	6,041.48	194.69	0.26	283.84	20.89	20.79
Jan 96	15,862.19	511.68	371	5,813.67	188.63	21,675.86	700.51	3,431.25	110.69	2,106.00	67.94	0.00	0.00	0.00	0.00	0.00	0.00	27,213.11	879.13	5,919.14	190.94	0.22	350.14	18.89	20.52
Feb 96	14,971.99	482.97	331	5,176.54	168.73	20,148.53	651.69	3,047.05	98.29	1,919.30	61.88	0.00	0.00	0.00	0.00	0.00	0.00	25,113.88	811.87	6,198.76	199.96	0.25	314.45	20.50	20.40
Mar 96	15,746.96	507.97	388	6,012.91	195.35	21,759.87	703.32	3,300.10	106.45	2,267.71	73.15	0.00	0.00	0.00	0.00	0.00	0.00	27,327.68	882.93	5,538.52	178.66	0.20	313.39	17.81	20.14
Apr 96	9,594.15	319.05	368	5,940.16	198.77	15,534.31	517.81	3,450.23	115.01	2,194.25	73.14	0.00	0.00	8.38	0.27	0.00	0.00	21,187.17	705.96	8,254.83	208.49	0.30	311.02	16.92	19.94
May 96	15,652.22	504.91	328	5,282.66	170.41	20,934.88	675.32	3,328.94	107.39	2,033.24	65.59	0.00	0.00	885.56	27.92	0.00	0.00	27,162.62	846.29	7,042.57	227.16	0.27	315.00	21.83	19.72
Jun 96	13,202.79	442.76	294	4,701.98	156.73	17,984.77	599.49	2,628.43	87.55	1,963.87	65.48	0.00	0.00	0.00	0.00	0.00	0.00	22,575.07	752.50	6,302.25	210.08	0.28	247.86	17.50	19.33
Jul 96	17,982.39	579.43	315	5,103.98	164.64	23,066.37	744.08	2,833.37	91.40	2,014.84	65.00	0.00	0.00	0.00	0.00	0.00	0.00	27,914.68	900.47	7,652.38	246.85	0.27	258.72	20.33	19.14
Aug 96	15,468.23	498.98	294	4,767.07	153.78	20,235.50	652.76	2,162.20	69.75	1,880.41	60.66	0.00	0.00	0.00	0.00	0.00	0.00	24,278.11	783.16	5,805.77	167.28	0.24	243.24	15.72	18.70
Sep 96	12,924.52	430.82	275	4,411.09	147.04	17,335.61	577.85	3,061.97	102.07	1,820.53	60.68	0.00	0.00	423.40	14.11	0.00	0.00	22,218.11	740.60	4,763.68	158.79	0.21	231.86	17.30	18.45
Total 96	175,667.77		3,886	61,670.04		237,537.81		36,511.09		23,730.98		0.00		1,297.34		0.00		298,653.82		72,438.99			3,436.97	221.36	
Average 96	14,638.98	476.67	324	5,155.84	168.53	19,794.82	645.20	3,042.59	99.22	1,977.58	64.49	0.00	0.00	106.11	3.53	0.00	0.00	24,887.82	808.91	6,036.58	196.76	0.24	286.41	18.45	
Oct 96	8,347.99	269.29	313	5,152.42	166.21	13,500.41	435.50	3,413.86	110.12	1,908.43	61.56	0.00	0.00	0.00	0.00	0.00	0.00	18,822.70	607.18	3,416.82	110.22	0.18	262.32	9.22	17.87
Nov 96	14,253.41	475.11	291	4,810.80	160.36	19,064.21	635.47	3,058.57	101.95	1,705.99	56.87	0.00	0.00	0.00	0.00	0.00	0.00	23,828.77	794.29	5,969.59	198.99	0.25	238.55	19.20	18.01
Dec 96	14,937.62	481.87	331	5,391.65	173.92	20,329.47	655.79	3,199.32	103.20	2,043.84	65.93	0.00	0.00	0.00	0.00	0.00	0.00	25,572.63	824.92	7,633.12	246.23	0.30	253.60	24.50	18.31
Jan 97	18,161.10	585.84	340	5,672.94	183.00	23,834.04	768.84	2,988.46	96.40	1,973.31	63.66	0.00	0.00	0.00	0.00	0.00	0.00	28,795.84	928.30	7,908.32	255.11	0.27	304.05	24.07	18.74
Feb 97	17,898.49	639.16	330	5,553.84	198.35	23,450.33	837.51	3,018.93	107.82	1,846.97	65.98	0.00	0.00	0.00	0.00	0.00	0.00	28,316.23	1,011.29	6,817.52	243.48	0.24	272.77	21.95	18.66
Mar 97	16,798.43	541.88	388	6,375.02	205.65	23,173.45	747.53	3,073.09	99.13	2,355.20	75.97	0.00	0.00	0.00	0.00	0.00	0.00	28,801.74	922.64	6,661.59	214.89	0.23	272.77	18.99	18.96
Apr 97	16,015.13	533.84	357	5,977.89	199.26	21,993.02	733.10	2,994.22	99.81	1,984.78	66.16	0.00	0.00	0.00	0.00	0.00	0.00	26,972.02	899.07	6,553.14	218.44	0.24	312.30	20.33	19.25
May 97	17,855.62	575.99	333	5,425.18	175.01	23,280.80	75.10	3,027.34	97.66	2,044.91	65.96	0.00	0.00	0.00	0.00	0.00	0.00	28,353.05	914.61	7,398.35	238.66	0.26	263.13	21.58	19.22
Jun 97	15,857.61	528.59	297	4,737.35	157.91	20,594.96	666.50	3,017.91	100.60	1,823.47	64.12	0.00	0.00	0.00	0.00	0.00	0.00	25,336.34	851.21	5,971.90	199.06	0.23	237.52	17.47	19.22
Jul 97	22,055.62	711.47	316	5,087.14	164.10	27,142.76	875.57	2,976.63	96.02	1,990.92	64.22	0.00	0.00	0.00	0.00	0.00	0.00	32,110.31	1,035.82	7,784.94	251.13	0.24	262.95	20.74	19.28
Aug 97	17,182.96	554.29	307	4,975.13	160.49	22,158.09	714.78	3,024.31	97.56	1,884.15	60.78	0.00	0.00	0.00	0.00	0.00	0.00	27,066.55	873.11	7,293.32	235.27	0.27	221.49	20.39	19.65
Sep 97	14,555.66	485.19	272	4,816.07	160.54	19,371.73	645.72	3,196.86	106.56	1,966.71	65.56	0.00	0.00	0.00	0.00	0.00	0.00	24,535.30	817.84	6,666.79	222.23	0.27	219.33	19.63	19.84
Total 97	193,917.84		3,875	63,975.43		257,893.27		36,989.53		23,628.68		0.00		0.00		0.00		318,511.48		80,075.40			3,140.18	238.08	
Average 97	16,159.82	531.88	323	5,331.29	175.40	21,491.11	650.95	3,062.46	101.40	1,969.06	64.73	0.00	0.00	0.00	0.00	0.00	0.00	26,942.62	873.41	6,672.95	219.47	0.25	261.68	19.84	

Pasco County Waste - to - Energy Tonnage Report

MONTH/ YEAR	WEST PASCO		EAST PASCO			TOTAL PASCO	DAILY AVG		HERNANDO		PLANT CITY		HILLSBOROUGH		SUMTER		CITRUS		PROCESSABLE WASTE		ASH		% ASH/ MSW	RECYCLING TOTAL TONS	MEGA WATTS	
	TONS	DAILY AVG	LOADS	TONS	DAILY AVG		WASTE	DAILY AVG	WASTE	DAILY AVG	WASTE	DAILY AVG	WASTE	DAILY AVG	TOTAL TONS	DAILY AVG	TOTAL TONS	DAILY AVG	MONTHLY GEN	12 MONTH ROLLING AVERAGE						
18-28 Feb	4,053.12	405.31		0.00		4,053.12	405.31					0.00	0.00					4,053.12	405.31							
Mar 91	16,907.78	545.41		0.00		16,907.78	545.41	3,068.83	98.99			6,426.51	207.31					24,611.61	793.92	6,698.98	216.10	0.27		12.47	12.47	
Apr 91	17,718.31	590.61		0.00		17,718.31	590.61	3,178.99	105.97			10,825.37	360.85					31,722.72	1,057.42	8,056.29	268.54	0.25		24.46	18.47	
May 91	15,227.39	491.21	173	3,192.78	102.99	16,420.17	594.20	3,246.11	104.71			5,963.20	192.36					27,610.76	890.67	6,401.68	206.51	0.23		17.50	18.14	
Jun 91	12,699.35	423.31	178	3,329.09	110.97	18,028.44	534.28	2,903.51	96.78			9,774.19	325.81					28,701.27	956.71	5,991.98	199.73	0.27		17.69	18.03	
Jul 91	15,179.62	469.63	197	3,724.71	120.15	18,903.33	609.78	3,242.08	104.58			0.00	0.00					22,243.20	717.52	5,931.36	191.33	0.23		14.12	17.25	
Aug 91	13,557.21	437.33	197	3,667.97	118.32	17,225.18	555.65	3,075.85	99.22			0.00	0.00					21,282.58	686.53	4,913.84	158.51	0.23		11.73	16.33	
Sep 91	12,519.74	417.32	175	3,224.85	107.50	15,744.59	524.82	2,821.20	94.04			0.00	0.00					18,560.77	618.69	5,004.74	166.82	0.27		12.33	15.76	
FY 91 Total	107,861.52		920	17,139.40		125,000.92		21,536.57		0.00		32,989.27		0.00	0.00	0.00	0.00	178,786.03		42,998.87				0.00	15.76	
Aug 91	13,482.69	475.02	184	3,427.88	111.99	16,525.12	545.01	3,076.65	100.61	0.00	0.00	4,123.66	135.79	0.00	0.00	0.00	0.00	22,348.25	765.85	6,142.70	201.08	0.22				
Oct 91	13,330.25	430.01	205	3,703.70	119.47	17,033.85	549.48	3,132.10	101.04	0.00	0.00	0.00	0.00					20,166.05	650.52	5,014.97	161.77	0.25		13.02	15.42	
Nov 91	12,304.70	410.16	200	3,640.34	121.34	15,945.04	531.50	3,011.60	100.39	0.00	0.00	0.00	0.00					18,956.64	631.89	4,901.05	163.37	0.26		12.75	15.12	
Dec 91	13,358.52	430.92	222	4,006.46	129.24	17,364.98	560.16	3,454.76	111.44	0.00	0.00	362.46	11.69					21,182.20	683.30	5,260.35	169.69	0.25		14.40	15.05	
Jan 92	12,932.55	417.18	214	3,927.84	126.70	16,860.39	543.88	2,981.51	96.18			2,184.48	70.47					22,026.38	710.53	4,338.38	139.95	0.20	85.10	12.12	14.78	
Feb 92	12,319.20	424.80	217	3,972.12	136.97	16,291.32	561.77	3,118.89	107.55			9,659.64	333.09					29,069.65	1,002.41	5,250.87	181.06	0.18	319.07	16.66	14.94	
Mar 92	14,249.17	459.65	244	4,552.57	146.86	18,801.74	606.51	3,276.08	105.68			5,315.29	171.46					27,363.11	883.65	7,176.99	231.52	0.26		23.19	15.83	
Apr 92	13,754.38	458.48	232	4,308.04	143.60	18,062.42	602.08	3,041.60	101.39			2,886.65	89.56					23,700.67	793.02	6,972.81	232.43	0.29	468.79	22.65	15.88	
May 92	12,264.69	395.64	191	3,520.80	113.57	15,785.49	509.21	2,813.53	90.76			2,313.78	74.64					20,912.78	674.61	4,830.07	155.81	0.23	361.03	14.25	15.41	
Jun 92	12,967.28	432.24	211	3,958.16	131.94	16,925.42	564.18	3,067.43	102.25			0.00	0.00					19,992.85	666.43	5,387.98	179.60	0.27	378.22	15.88	15.26	
Jul 92	13,892.87	448.16	211	3,911.61	126.18	17,804.48	574.34	3,071.13	99.07			836.46	26.98					21,712.07	700.39	4,855.30	156.62	0.22	348.08	13.43	15.20	
Aug 92	12,885.77	415.67	298	3,633.84	117.22	16,519.61	532.89	3,097.52	99.98	1,893.63	61.08	0.00	0.00					21,510.76	693.90	5,161.20	166.49	0.24	335.59	14.10	15.40	
Sep 92	14,007.54	466.92	266	3,839.77	127.99	17,847.31	594.91	2,972.44	99.08	1,205.32	40.18	0.00	0.00					22,025.07	734.17	4,768.92	158.96	0.22	311.06	14.37	15.57	
FY 92 Total	158,266.90		2,709	46,979.63		205,242.15		37,038.59		3,098.95		23,358.74		0.00	0.00	0.00	0.00	268,738.43		63,918.89			3,030.88	15.57		
Aug 92	13,188.91	431.27	226	3,914.97	128.09	17,103.51	559.37	3,086.55	100.96	1,549.48	49.98	1,946.56	64.82	0.00	0.00	0.00	0.00	22,394.87	733.43	5,326.57	174.35	0.24	336.76	15.77		
Oct 92	13,620.45	445.82	307	3,863.59	127.86	17,784.04	573.68	3,086.68	99.57	1,835.99	59.23	0.00	0.00					22,706.71	732.47	5,732.29	184.91	0.25	330.65	18.19	16.00	
Nov 92	12,844.65	428.16	296	3,873.59	129.12	16,718.24	557.27	2,813.61	93.79	1,675.25	55.84	0.00	0.00					21,207.10	706.90	4,744.61	158.15	0.22	327.21	15.91	16.26	
Dec 92	13,952.95	450.10	340	4,524.99	145.97	18,477.94	596.06	3,172.69	102.34	1,836.21	59.23	0.00	0.00					23,486.84	757.64	6,027.57	194.44	0.26	394.49	20.61	16.78	
Jan 93	14,511.09	468.10	336	4,680.22	150.97	19,191.31	619.07	3,105.46	100.18	1,717.00	55.39	0.00	0.00					24,013.77	774.64	4,582.85	147.83	0.19	403.40	15.26	17.04	
Feb 93	12,860.23	459.29	329	4,400.40	157.16	17,260.63	616.45	2,812.66	100.45	1,754.95	62.68	10,365.70	370.20					32,163.94	1,149.78	6,677.00	238.49	0.21	351.45	25.21	17.75	
Mar 93	20,442.55	659.44	425	5,523.22	178.17	25,965.77	837.61	3,550.74	114.54	2,383.09	76.87	2,496.71	80.54					34,398.31	1,109.56	6,917.25	223.14	0.20	386.59	22.47	17.69	
Apr 93	14,350.63	478.36	398	5,385.90	179.53	19,736.73	657.89	3,029.59	100.99	2,140.29	71.34	559.56	18.65					25,466.17	848.87	6,300.48	210.02	0.25	393.39	18.14	17.32	
May 93	16,555.74	534.06	314	4,051.66	130.70	20,607.40	664.75	3,243.91	104.64	1,935.93	62.45	0.00	0.00					25,787.24	831.85	8,898.99	287.06	0.35	334.93	22.83	18.03	
Jun 93	17,470.90	582.36	347	4,486.14	149.54	21,957.04	731.90	3,100.41	103.35	2,119.67	70.66	0.00	0.00					27,177.12	905.90	7,408.24	246.94	0.27	300.71	21.80	18.53	
Jul 93	14,812.00	477.81	338	4,416.54	142.47	19,228.54	620.28	3,300.43	106.47	1,968.54	63.50	0.00	0.00					24,497.51	790.24	7,274.59	234.66	0.30	319.01	19.76	19.05	
Aug 93	18,830.70	607.44	329	4,249.85	139.57	23,157.41	747.01	3,351.78	108.12	2,012.79	64.93	0.00	0.00					28,521.98	917.58	7,098.03	228.97	0.25	293.33	16.41	19.25	
Sep 93	15,044.07	501.47	330	4,286.37	142.86	19,330.44	644.35	2,951.91	98.40	1,933.21	64.44	1,965.95	65.53					26,181.51	872.72	5,587.31	186.24	0.21	334.25	14.99	19.30	
FY 93 Total	185,496.16		4,089	53,842.47		239,415.49		37,519.87		23,312.92		15,387.92		0.00	0.00	0.00	0.00	315,636.20		77,250.01			4,169.40	19.30		
Aug 93	15,458.01	507.70	341	4,486.87	147.83	19,951.29	655.53	3,126.66	102.74	1,942.74	63.88	1,262.33	44.58	0.00	0.00	0.00	0.00	26,303.02	866.51	6,437.50	211.74	0.25	347.45	19.30		
Oct 93	14,000.00	451.61	326	4,298.58	138.66	18,298.58	590.28	4,235.13	136.62	1,789.09	57.71	1,813.68	58.51					26,136.48	843.11	6,887.85	222.19	0.26	315.90	23.28	19.72	
Nov 93	14,574.27	470.14	352	4,617.90	148.96	19,192.17	619.10	4,561.22	147.14	1,971.55	63.60	0.00	0.00					25,724.93	829.84	5,855.62	188.89	0.23	312.81	18.00	19.90	
Dec 93	13,755.38	443.72	346	4,718.35	152.20	18,473.73	595.93	4,551.29	146.82	1,761.89	56.84	1,725.87	55.67					26,512.78	855.25	7,010.32	226.14	0.26	369.30	23.85	20.17	
Jan 94	14,167.95	457.03	369	6,949.93	224.19	21,117.88	681.22	4,648.73	148.96	1,921.56	61.99	0.00	0.00					27,688.17	893.17							