

## Smith, George

---

**From:** Jason Gorrie <jason@jmg-eng.com>  
**Sent:** Friday, February 25, 2022 8:14 AM  
**To:** SWD\_Waste  
**Cc:** Justin G. Roessler; Carrie S. Kimble  
**Subject:** Pasco County Resource Recovery Facility - Class I Landfill Remaining Life Estimate  
**Attachments:** Class I Landfill Remaining Useful Life Report - Reporting Year 2021.pdf

### EXTERNAL MESSAGE

This email originated outside of DEP. Please use caution when opening attachments, clicking links, or responding to this email.

On behalf of Pasco County, please find attached the Remaining Useful Life Estimate for the Class I Landfill at the Pasco County Resource Recovery Facility.

Please do not hesitate to contact me with any questions.

Jason M. Gorrie, P.E., BCEE  
President



JMG Engineering, Inc.  
3825 Henderson Blvd.  
Suite 604  
Tampa, Florida 33629  
(813) 605-0706 (office)  
(813) 220-0653 (cell)

# Pasco County Utilities

## Remaining Disposal Capacity and Site Life Calculations Pasco County Resource Recovery Facility

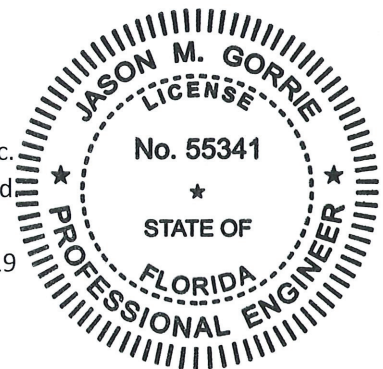
Reporting Year 2021

February 2022



Prepared For:  
Pasco County Utilities

Prepared By:  
Jason Gorrie, P.E.  
JMG Engineering, Inc.  
3825 Henderson Blvd  
Suite 604  
Tampa, Florida 33629



  
Signature

2/25/2022  
Date

## 1.0 Purpose of Report

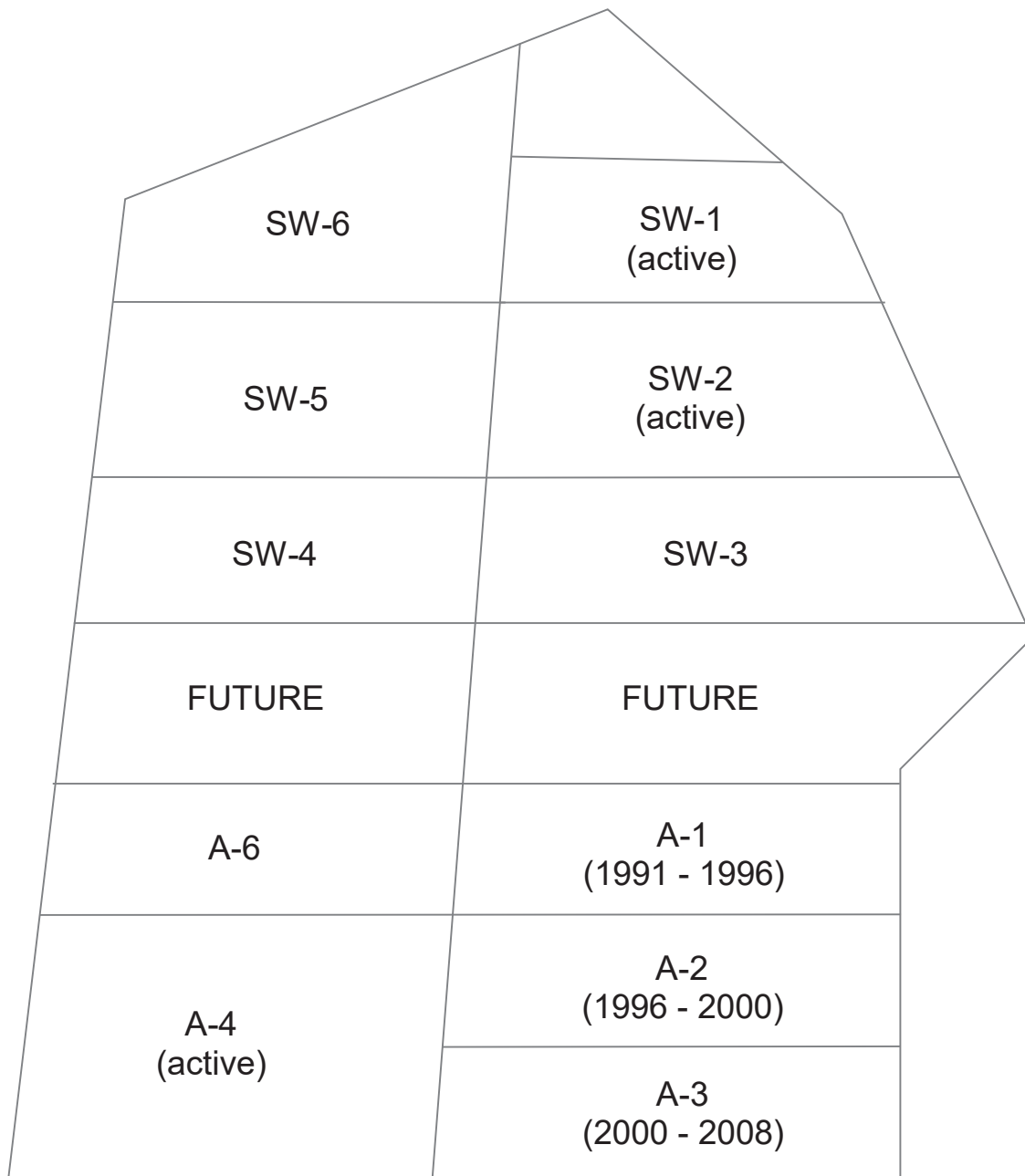
Rule 62-701.500(13)(c) of the Florida Administrative Code (FAC) requires landfill owners and operators to annually prepare an estimate of the remaining life and capacity (in cubic yards) of the existing, constructed landfill and an annual estimate of the life and capacity of other permitted areas not yet constructed. For the purposes of this Report, the “existing, constructed landfill” is considered to be the currently active portions of the site designated as A-4 (for combustion ash) and SW-1/SW-2 (for unprocessed municipal solid waste.) The remaining useful life of disposal cell A-4 is presented in **Section 3.0**. The remaining useful life of disposal cell SW-1/SW-2 is presented in **Section 4.0**. Finally, the remaining useful life of future disposal cells permitted by Power Plant Siting Act Conditions of Certification PA 87-23C are presented in **Section 5**.

## 2.0 Assumptions Used in Report

- The primary disposal mechanism for municipal solid waste generated within Pasco County is the Pasco County Resource Recovery Facility. The Resource Recovery Facility is permitted to combust approximately 1,050 tons per day of municipal solid waste. Residue from the combustion of the municipal solid waste (hereinafter referred to as “ash”) is disposed in those areas identified in **Figure 1** as “Ash Disposal Cells.” As of the writing of this Report, disposal cells A-1, A-2, and A-3 are temporarily inactive and not receiving ash. While these cells are not currently receiving ash and are temporarily capped with a tarp to minimize leachate generation, they are still available for additional disposal in the future. Disposal cell A-4 is the currently active disposal cell for ash residue and receives all ash generated by the Resource Recovery Facility<sup>1</sup>.
- The actual mass value of waste that can be processed by the Resource Recovery Facility is variable due to the heating value of the waste. Drier waste and waste containing larger amounts of plastics has a higher heating value, resulting in less mass throughput through the Resource Recovery Facility. Wetter waste and waste containing less plastics has a lower heating value, resulting in more mass throughput through the Resource Recovery Facility. The heating value of the waste (measured in British thermal units per pound of waste, or Btu/lb) has been observed to be gradually increasing over the course of several years, resulting in a slightly lower mass throughput capability of the Resource Recovery Facility. For purposes of this Report, it is assumed that the annual solid waste mass throughput capacity of the Resource Recovery Facility will remain at 1,050 tons per day for the foreseeable future. Assuming no changes in facility availability, the Resource Recovery Facility is capable of processing approximately 331,000 tons per years given the 1,050 tons per day design capacity, 90% availability and a standard higher heating value of 4,800 Btu per pound. (CDM Smith, 2015)

---

<sup>1</sup> The Florida Department of Environmental Protection has authorized Pasco County to beneficially utilize a significant portion of the ash generated by the Resource Recovery Facility. For purposes of this Report, it is conservatively assumed that all ash will be placed in the Ash Disposal Cells and not beneficially utilized. It should be noted that future beneficial reuse projects undertaken in accordance with the FDEP’s approval could substantially reduce the amount of ash placed in the Ash Disposal Cells in future years.



**LEGEND**

- A-x     Ash Disposal Cells
- SW-x    Solid Waste Disposal Cells



**FIGURE 1**  
Class I Landfill Footprint

2021 Useful Life  
Estimate Pasco  
County Class I Landfill

- The quantity of ash generated by the combustion process at the Resource Recovery Facility is relatively consistent at 23% (by mass) of the municipal solid waste combusted. (Pasco County Utilities, 2018) Previous studies by Covanta and others have demonstrated that the density of the ash is also relatively consistent over protracted periods at 2,200 pounds per cubic yard. Municipal solid waste that is bypassed from the Resource Recovery Facility and placed in the solid waste disposal cells is assumed to have a compacted density of approximately 1,100 pounds per cubic yard.
- It is widely recognized that the population of Pasco County is growing. Future waste generation rates were estimated in 2015 based on population projections generated by the University of Florida’s Bureau of Economic and Business Research. These numbers are relied upon in this Report and presented in Table 1.
- The projections presented in this Report rely on multiple assumptions (such as population growth, WTE Facility combustion efficiency, landfill operation efficiency, planned future combustion capacity, etc.) The predicted dates are considered to be accurate to ± 3 years.

## 2.1 Permitted Disposal Capacity

Construction and operation of the disposal cells at the site is governed by Power Plant Siting Act Conditions of Certification PA87-23C. The permitted maximum elevation of the currently active Ash Disposal Cell (A-4) is 120 feet NGVD. In 2015, CDM-Smith estimated the total volume available for disposal in cell A-4 to be 1,254,269 cubic yards (CDM-Smith, 2015).

In February of 2020, the FDEP approved a modification to the Landfill Operations Plan that allows for a new fill sequence that combines existing disposal cells SW-1 and SW-2 into a common disposal cell. The modification also increased the maximum elevation of the combined cell from 101 feet NGVD to 121 feet NGVD. This new fill sequence and maximum permitted height result in an estimated total volume available for disposal of approximately 1.6 million cubic yards.

## 3.0 Useful Remaining Life of Cell A-4

The currently permitted capacity of Ash Disposal Cell A-4 is considered to be 1,254,269 cubic yards. As of January 2021, all six subcells are considered to be “active”, however, only subcells 4 and 5 are receiving ash for disposal. Subcell 6 is being utilized for ash and metals processing only. In order to estimate the current volume of waste in place in Cell A-4, D.C. Johnson Associates conducted a topographic survey of the active cell in December 2020. The elevation contours of the A4 disposal cell are depicted at **Attachment 1**.

Using the elevations reported on the topographic survey in conjunction with the known elevations of the liner system, it is possible to estimate the volume of ash in place in cell A-4. Mathematically, the volume under a function is defined by the double integral:

$$\int_{x-min}^{x-max} \int_{y-min}^{y-max} f(x, y) dx dy$$

To determine the function  $f(x, y)$  defining the shape of the landfill surfaces, JMG Engineering relied upon the volume calculation algorithms of the surface mapping software program Surfer® 13. The total volume of ash calculated to be currently in place in A-4 is approximately 588,014 cubic yards.

Given the permitted volumetric capacity of 1,254,269 cubic yards and subtracting the 588,014 cubic yards calculated from the 2022 survey to be currently in place, approximately 666,255 cubic yards of airspace remains available for disposal. Municipal waste combustor ash has an approximate density of 2,200 pounds per cubic yard. Using the assumed density, the 666,255 remaining cubic yards can accommodate approximately 732,881 tons of ash.

**Table 1** below shows the projected ash generation rate as a function of anticipated Resource Recovery Facility capacity. Because the waste-to-energy facility is currently operating at its maximum capacity, no changes in the ash generation rate are expected in the immediate future. However, it is anticipated that the planned Facility expansion will be complete by the year 2026 and will result in an increased ash generation rate of approximately 87,000 cubic yards beginning in Calendar Year 2027. As shown in Table 1, this increased ash generation rate **will consume the remaining available airspace of A4 by approximately 2029.**

### 3.1 Merging of all Four Constructed Ash Cells

When Cell A-4 reaches its permitted height, the currently approved Landfill Operations Plan<sup>2</sup> specifies that the interstices (or valleys) between A1/A2, A2/A3, and A3/A4 will be utilized for disposal. Volume calculations undertaken by Jones Edmunds and Associates (**Attachment 6**) indicate that 1,060,000 cubic yards of airspace is available in the interstices for disposal. At the anticipated ash generation rate (including a planned WTE Facility expansion), the interstices will provide disposal capacity for approximately 18 years, or though 2047.

## 4.0 Useful Remaining Life of Cell SW-2

The calculation procedures used to estimate the remaining useful life for disposal cell SW-1/SW-2 are identical to those described above for disposal cell A-4. Utilizing the surveyed elevations provided by D.C. Johnson (see **Attachment 2**), the Surfer 13® algorithms determined that the volume of solid waste present in SW-1/SW-2 at the beginning of the fiscal year is approximately 826,133 cubic yards (see **Attachment 4**).

The new permitted volumetric capacity of SW-1/SW-2 is assumed to be 1.6 million cubic yards. Subtracting the 826,133 cubic yards calculated to be currently in place, approximately 773,867 cubic yards of airspace remains available for disposal.

The intent of the solid waste cells (inclusive of SW-1/SW-2) as stated in the original application for Power Plant Siting Certification is to accommodate solid waste deliveries in excess of the Resource Recovery Facility's capacity. As stated previously, the Resource Recovery Facility is operating at capacity. This necessitates periodic (and temporary) diversions during times when the Resource Recovery Facility must operate at reduced capacity to facilitate maintenance activities. The rate of waste placement in SW-1/SW-2 is also heavily dependent upon year-to-year budget decisions about the amount of waste to haul out of County for disposal.

---

<sup>2</sup> Refer to Power Plant Siting Act Conditions of Certification PA87-23G, dated 10/19/2021

**Table 1** below shows the projected waste diversion volume as a function of anticipated Resource Recovery Facility capacity and future population growth<sup>3</sup>. Using an assumed density of 1,100 pounds per cubic yard for municipal solid waste compacted in-place (USEPA, 2016), and further assuming that daily cover equivalent to 15% (by volume) per year will be utilized, it is estimated that remaining airspace will be consumed at the rate identified in Table 1. Accordingly, **the estimated remaining useful life of cell SW-1/SW-2 (as currently designed and permitted) is at least 10 years using a combination of exporting waste out-of-county and disposal in SW-1/SW-2<sup>4</sup>.**

## 5.0 Useful Remaining Life of Future Disposal Cells

As shown in Figure 1, several acres of permitted disposal space remain available for future use by the County. At present, liner and leachate collection systems have been constructed for the following disposal cells: SW-1, SW-2, A-1, A-2, A-3, and A-4. Because these lined cells are adjacent to each other, it is planned to maximize the airspace over existing lined areas by utilizing the interstitial space (or valley) between the existing cells, as described in Section 3.1 above. Such a practice will delay the need for construction of additional liner and leachate collection systems until approximately 2047.

Finally, those cells identified in Figure 1 as SW-3, SW-4, SW-5, and SW-6 are sited and permitted as disposal areas but are yet to be constructed. Assuming that the ultimate capacity of these yet-to-be constructed cells will have an approximate capacity of 750,000 cubic yards each<sup>5</sup>, an additional 3 million cubic yards of disposal volume for MSW remains available to Pasco County. This equates to roughly 13 years of disposal capacity at the reasonably foreseeable MSW disposal rates anticipated in the future, as depicted in **Table 2**. Use of these permitted cells for disposal of ash (rather than uncombusted MSW) from the Resource Recovery Facility) will prolong the remaining useful life even further.

---

<sup>3</sup> The diversion rates listed in Table 1 are conservative. The actual diversion rate is expected to be less than that presented in Table 1 because the Resource Recovery Facility has demonstrated an ability to process waste in excess of the 331,000 tons per year listed in the 2015 Solid Waste Master Plan.

<sup>4</sup> Rapid population growth has necessitated increased reliance on out-of-county hauling. It is assumed that out-of-county hauling will continue to be heavily relied upon until the waste-to-energy expansion is completed in 2025.

<sup>5</sup> It is assumed that landfill operators will be able to achieve greater compaction efficiencies and lower daily cover application rates if it becomes necessary to operate the solid waste disposal cells in a permanent (rather than intermittent) fashion, resulting in a larger disposal capacity than is currently achieved in SW-1/SW-2.

**Table 1  
Estimated Waste Generation Rates, Waste Disposal Rates, and Remaining Disposal Capacity**

Fiscal Year (Oct - Sep)	Resource Recovery Facility			A-4 Disposal Cell			SW-1/SW-2 Disposal Cell						Solid Waste Hauled Out- of County	
	Projected Total Waste Received <sup>1</sup> (tons)	Estimated Waste Processed <sup>3a</sup> (tons)	Estimated Ash Generation Rate (tons) (yds <sup>3</sup> ) <sup>5</sup>	Estimated Ash in Place at Beginning of Fiscal Year (yds <sup>3</sup> )	Estimated Waste Placement Rate (yds <sup>3</sup> )	Estimated Remaining Disposal Capacity at End of Fiscal Year <sup>5</sup> (yds <sup>3</sup> )	Estimated Waste In Place at Beginning of Fiscal Year <sup>3</sup> (yds <sup>3</sup> ) <sup>6</sup>	Estimated Waste Placement Rate (tons) (yds <sup>3</sup> ) <sup>6</sup>	Estimated Waste Placement Rate (tons) (yds <sup>3</sup> ) <sup>6</sup>	Estimated Daily Cover Application Rate (yds <sup>3</sup> )	Estimated Remaining Disposal Capacity at End of Fiscal Year <sup>6</sup> (yds <sup>3</sup> )	Estimated Waste Transferred <sup>8</sup> (tons)	Estimated Waste Transferred <sup>8</sup> (yds <sup>3</sup> ) <sup>2</sup>	
2018 <sup>7</sup>	378,733	341,122	85,875	346,700	78,068	836,000	219,261	27,442	15,093	4,116	403,000	22,518	150,120	
2019 <sup>a</sup>	386,807	342,994	83,477	418,000	75,889	760,380	250,819	18,738	10,306	2,811	381,451	33,507	223,380	
2020 <sup>b</sup>	411,616	352,875	81,161	500,948	73,783	726,567	768,591	17,525	9,639	2,629	809,220	49,102	327,347	
2021 <sup>c</sup>	435,723	345,353	79,431	527,702	72,210	666,255	790,780	36,780	20,229	5,517	773,867	70,141	467,607	
2022	460,000	345,000	79,350	588,014	72,136	594,119	826,133	27,273	15,000	4,091	742,503	100,000	666,667	
2023	475,000	345,000	79,350	660,150	72,136	521,982	857,497	54,545	30,000	8,182	679,776	100,000	666,667	
2024	485,000	345,000	79,350	732,287	72,136	449,846	920,224	72,727	40,000	10,909	596,140	100,000	666,667	
2025	495,000	345,000	79,350	804,423	72,136	377,710	1,003,860	90,909	50,000	13,636	491,594	100,000	666,667	
2026	505,000	345,000	79,350	876,559	72,136	305,573	1,108,406	109,091	60,000	16,364	366,140	100,000	666,667	
2027	515,000	515,000	118,450	948,696	107,682	197,891	1,233,860	0	0	0	366,140	0	0	
2028	525,000	520,000	119,600	1,056,378	108,727	89,164	1,244,315	9,091	5,000	1,364	355,685	0	0	
2029	530,000	520,000	119,600	1,165,105	47,874	41,290	1,244,315	18,182	10,000	2,727	334,776	0	0	
2030	545,000	520,000	119,600	1,165,105	47,874	41,290	1,265,224	45,455	25,000	6,818	282,503	0	0	
2031	550,000	520,000	119,600	1,165,105	47,874	41,290	1,317,497	54,545	30,000	8,182	219,776	0	0	

<sup>1</sup> Source: Integrated Solid Waste Management System Master Plan Update, Figure 3-2, CDM-Smith, 2019, except where noted

<sup>3a</sup> Source: Engineering judgement based on past delivery rates

<sup>2</sup> assume density of uncompacted mixed MSW to be 300 lbs/cu. yd

<sup>3</sup> assume total capacity of A4 is 1,254,269 cu. yds.

<sup>4</sup> assume total capacity of SW1/SW2 is 900,000 cu. yds. prior to 2020, 1.6 million after 2020 (following FDEP Modification)

<sup>5</sup> assume density of ash to be 2,200 lbs/cu. yd.

<sup>6</sup> assume density of compacted mixed MSW to be 1,100 lbs/cu. yd.

<sup>7</sup> 2018 Values are actual values as reported by Pasco County, 1/17/19 Memorandum from J. Chamberlain to M. Carballa

<sup>7a</sup> 2019 Values are actual values as reported by Pasco County, 1/24/20 Memorandum from T. Treshler to M. Carballa

<sup>7b</sup> 2020 Values are actual values as reported by Pasco County, 1/29/2021 Memorandum from J. Chamberlain to M. Carballa

<sup>8</sup> Assumes that favorable pricing will result in decision to haul out of county through 2025

<sup>9</sup> pre-2020 values are for SW2 only, 2020 values and beyond are combined SW1 and SW2



**TABLE 2**  
**Future Cells SW-3, SW-4, SW-5, and SW-6**

Year	Projected Total Waste Received <sup>1</sup> (tons)	Estimated Waste Placement Rate <sup>2</sup> (tons)	Estimated Waste Placement Rate (yds <sup>3</sup> )	Estimated Daily Cover Application Rate (yds <sup>3,6</sup> )	Estimated Remaining Disposal Capacity at End of Calendar Year <sup>4</sup> (yds <sup>3</sup> )
2050	400,000	69,000	98,571	9,857	2,891,571
2051	410,000	79,000	112,857	11,286	2,767,429
2052	425,000	94,000	134,286	13,429	2,619,714
2053	435,000	104,000	148,571	14,857	2,456,286
2054	450,000	119,000	170,000	17,000	2,269,286
2055	452,000	121,000	172,857	17,286	2,079,143
2056	460,000	129,000	184,286	18,429	1,876,429
2057	475,000	144,000	205,714	20,571	1,650,143
2058	480,000	149,000	212,857	21,286	1,416,000
2059	490,000	159,000	227,143	22,714	1,166,143
2060	500,000	169,000	241,429	24,143	900,571
2061	510,000	179,000	255,714	25,571	619,286
2062	520,000	189,000	270,000	27,000	322,286
2063	530,000	199,000	284,286	28,429	9,571
2064	530,000				
2065	530,000				

<sup>1</sup> Source: Integrated Solid Waste Management System Master Plan, Figure 2-3, CDM-Smith, 2015

<sup>2</sup> Projected Total Waste Delivered minus 331,000 tons processed in WTE Facility

## References

CDM Smith. (2015). *Integrated Solid Waste Management System Master Plan*.

CDM-Smith. (2015). *Annual Remaining Disposal Capacity and Site Life Calculations*.

Pasco County Utilities. (2018). *Waste to Energy Tonnage Report*.

USEPA. (2016). *Volume to Weight Conversion Factors, Office of Resource Conservation and Recovery*.

## Attachments

Attachment 1: A-4 Topographic Contours

Attachment 2: SW-2 Topographic Contours

Attachment 3: A-4 Grid Volume Computations

Attachment 4: SW-2 Grid Volume Computations

Attachment 5: Waste Placement Records

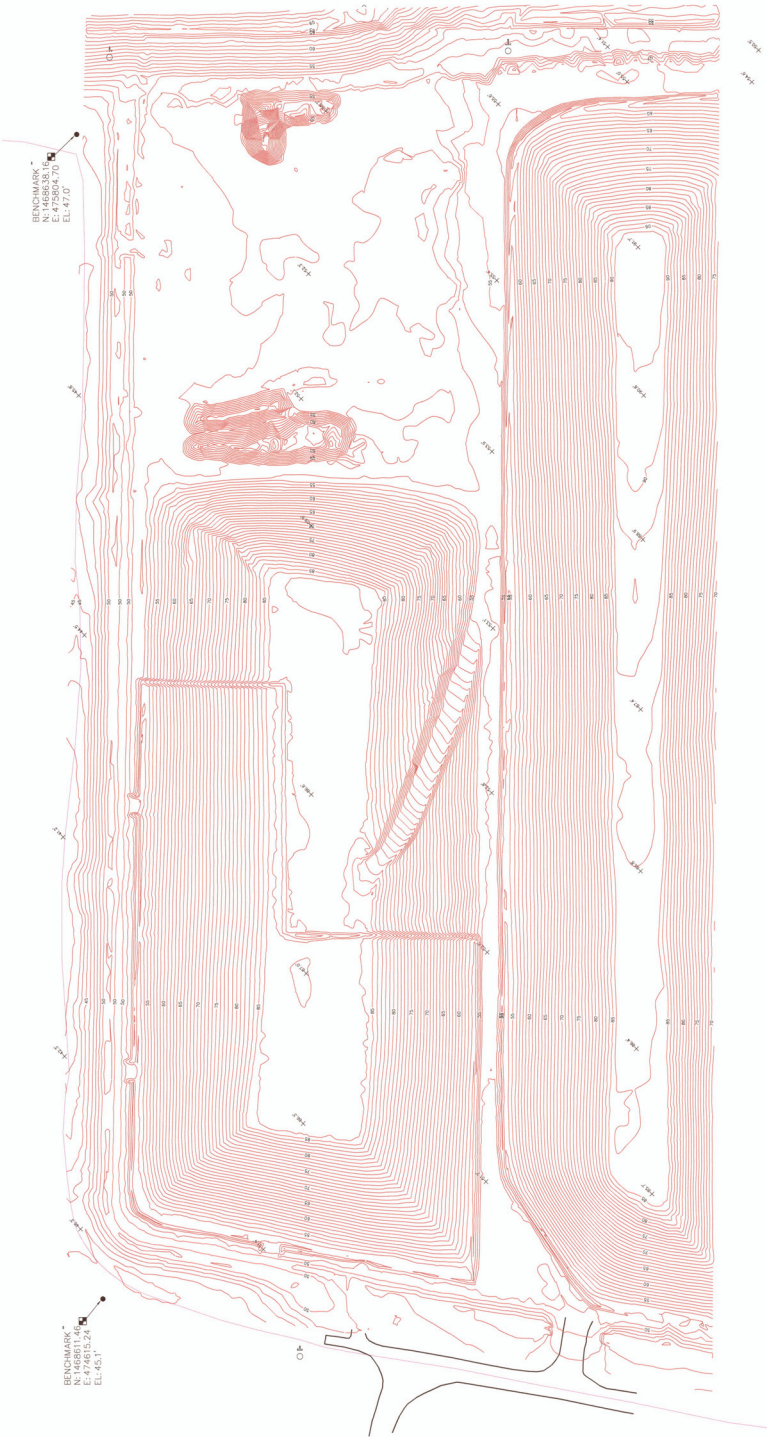
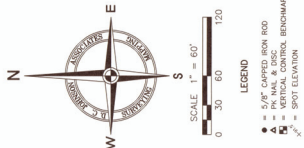
Attachment 6: Interstice Volume and Consumption Estimate

# ATTACHMENT 1

## A-4 Contours



1911 S. Curry Avenue  
Lawrenceville, GA 30046  
Phone: (770) 962-2755  
Fax: (770) 962-2756  
www.johnson.com



BENCHMARK  
N: 1467864.73  
E: 474839.09  
EL: 44.8

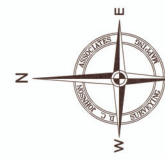
BENCHMARK  
E: 475854.70  
EL: 47.0

ATTACHMENT 2  
SW-1/SW-2 Contours

DATE OF FIELD SURVEY: 12/16/2021

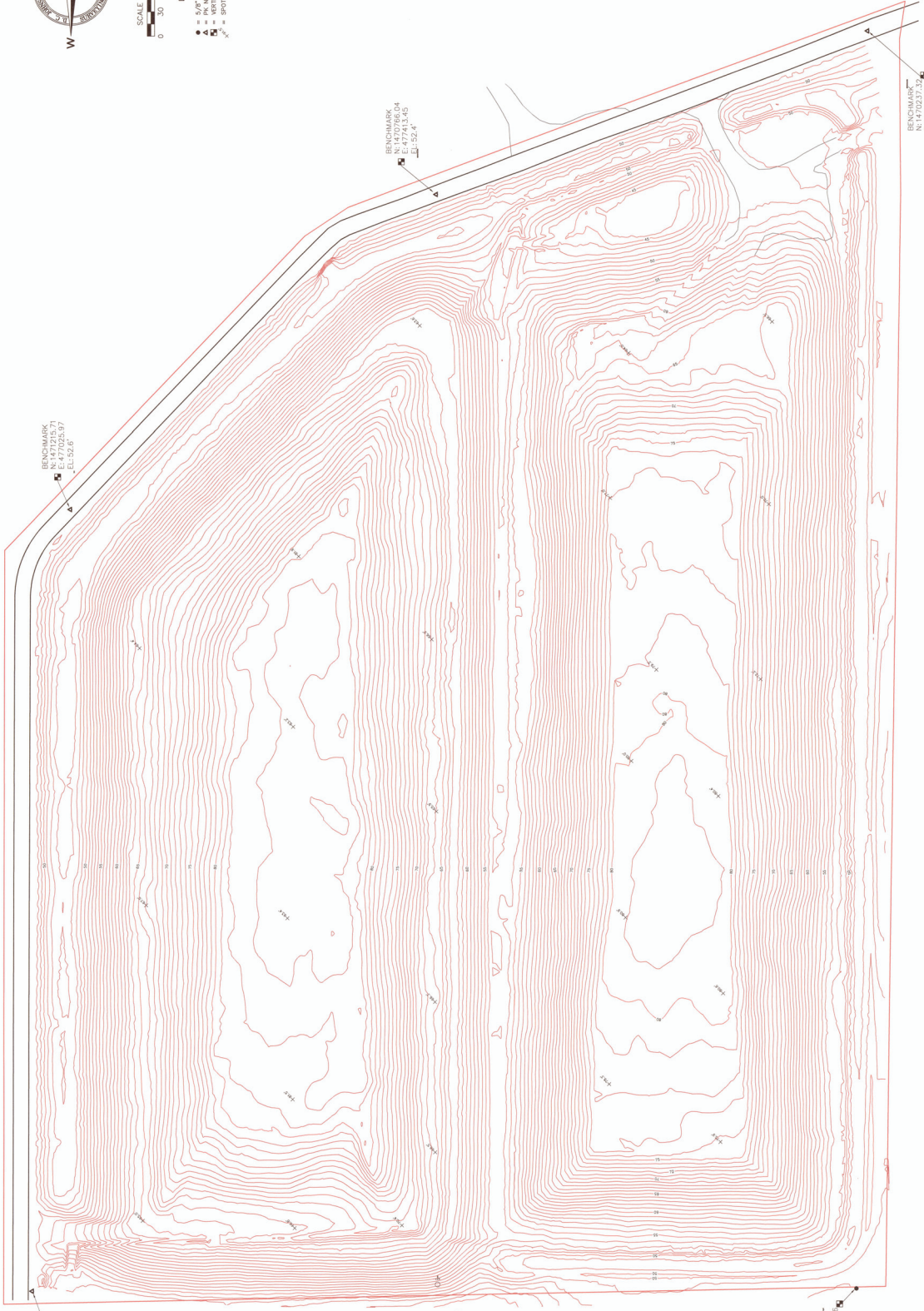


PROJECT NO. 2019-430A01B000002  
SEC. 25 TWP. 24 S RANG. 17 E COUNTY: PASCO  
Pasco County Solid Waste Department  
Topographic Survey  
Pasco Waste, Area 3  
SHEET NO. 3 of 3  
SCALE: 1" = 60'



SCALE 1" = 60'  
0 50 100 150

LEGEND  
• = 5/8" CAPTED IRON ROD  
▲ = 1/2" IRON PIN  
□ = VERTICAL CONTROL BENCHMARK  
x = SPOT ELEVATION



BENCHMARK  
N: 1470215.71  
E: 477025.97  
EL: 52.6

BENCHMARK  
N: 1470766.04  
E: 47713.45  
EL: 52.4

BENCHMARK  
N: 1470237.32  
E: 477615.22  
EL: 52.9

BENCHMARK  
N: 1470215.71  
E: 477025.97  
EL: 52.6

BENCHMARK  
N: 1470766.04  
E: 47713.45  
EL: 52.4

BENCHMARK  
N: 1470247.2  
E: 47766.66  
EL: 48.0'

ATTACHMENT 3  
A-4 Grid Volume Calculations

---

# Grid Volume Computations

---

Mon Feb 14 13:40:57 2022

## Upper Surface

Grid File Name: D:\OneDrive - JMG Engineering\Pasco\Compliance Assistance (TO 1-22)\Landfill Remaining Life Reports\A4\combined 2020 and 2021.grd

Grid Size: 100 rows x 31 columns

X Minimum: 1467848.532  
X Maximum: 1468651.395  
X Spacing: 26.762100000004

Y Minimum: 474481.9094  
Y Maximum: 477099.6285  
Y Spacing: 26.441607070707

Z Minimum: 44.784496335476  
Z Maximum: 92.05968481894

## Lower Surface

Level Surface defined by Z = 48

## Volumes

Z Scale Factor: 1

### Total Volumes by:

Trapezoidal Rule: 15876379.073554 ft<sup>3</sup> = 588,014 yd<sup>3</sup>

Simpson's Rule: 15878900.8267

Simpson's 3/8 Rule: 15906287.723383

### Cut & Fill Volumes

Positive Volume [Cut]: 15895098.583184

Negative Volume [Fill]: 18719.50963016

Net Volume [Cut-Fill]: 15876379.073554

## Areas

### Planar Areas

Positive Planar Area [Cut]: 824948.14739642



Negative Planar Area [Fill]: 7228.181325988  
Blanked Planar Area: 1269493.4810612  
Total Planar Area: 2101669.8097836

**Surface Areas**

Positive Surface Area [Cut]: 846486.48746098  
Negative Surface Area [Fill]: 7260.6996841616

ATTACHMENT 4  
SW-1/SW-2 Grid Volume Calculations

---

# Grid Volume Computations

---

Mon Feb 14 15:11:27 2022

## Upper Surface

Grid File Name: D:\OneDrive - JMG Engineering\Pasco\Compliance Assistance (TO  
1-22)\Landfill Remaining Life Reports\SW1\_2\SW 1 and 2.grd  
Grid Size: 68 rows x 100 columns

X Minimum: 476046.9576  
X Maximum: 477605.5718  
X Spacing: 15.7435777777777

Y Minimum: 1470204.206  
Y Maximum: 1471266.639  
Y Spacing: 15.857208955223

Z Minimum: 44.200167603052  
Z Maximum: 84.16328505838

## Lower Surface

Level Surface defined by Z = 48

## Volumes

Z Scale Factor: 1

### Total Volumes by:

Trapezoidal Rule: 22305606.155854 ft<sup>3</sup> = 826133 yd<sup>3</sup>  
Simpson's Rule: 22299296.76647  
Simpson's 3/8 Rule: 22315472.065036

### Cut & Fill Volumes

Positive Volume [Cut]: 22322262.53757  
Negative Volume [Fill]: 16656.381716567  
Net Volume [Cut-Fill]: 22305606.155854

## Areas

### Planar Areas

Positive Planar Area [Cut]: 1147227.3341408

Negative Planar Area [Fill]: 13391.808398018  
Blanked Planar Area: 495304.01780965  
Total Planar Area: 1655923.1603485

**Surface Areas**

Positive Surface Area [Cut]: 1163257.0684536  
Negative Surface Area [Fill]: 13513.103806037


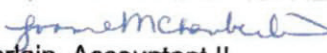
## ATTACHMENT 5

### Waste Placement Records



**PUBLIC INFRASTRUCTURE BRANCH**  
 PI Fiscal and Business Administration

**INTEROFFICE  
 MEMORANDUM**

DATE: January 12, 2022  
 TO: Michael J. Carballa, P. E., BCEE, Assistant County Administrator (Public Infrastructure)  
 THRU: Justin Grant, MPA, Fiscal and Business Administration Director   
 FROM: Joanne Chamberlain, Accountant II   
 FILE: PIFBA22-0162  
 SUBJECT: Quarterly Tonnage Report, Waste-to-Energy Facility, December, 2021

REFERENCES:

Attached are the latest monthly totals for Solid Waste and Ash processed at the Pasco County Waste-To-Energy Facility. This report is provided quarterly, but presented by month, with daily averages.

	Oct	Nov	Dec	
Current Quarter's ratio of ash to waste by month:	21%	21%	22%	
This Fiscal Year's monthly average ratio ash to waste =				21%
Current Quarter's processable waste by month:	27,389	31,023	30,818	Tons
Current Quarter's Recycling totals by month:	747.83	813.25	946.06	** Tons

*\*\* as of October 2011, this figure is based on Recycling hauled out*

**FY 2022 WASTE SUMMARY:** 89,230 Tons of MSW delivered to the Waste-to-Energy Facility to date  
 0 Tons Bypassed to SW Cells (Not Included in WTE Report Tonnage)  
 21,096 Tons Hauled Out of County (Not Included in WTE Tonnage)  
110,326 Total MSW to date for Fiscal Year

**PAST MSW ACTIVITY:**

<u>FY 17</u>	<u>FY 18</u>	<u>FY 19</u>	<u>FY 20</u>	<u>FY 21</u>	
364,947	378,733	386,807	411,616	435,723	Total MSW for Fiscal Year
339,615	341,122	342,994	352,875	345,353	Tons of MSW delivered to the Waste-to-Energy Facility during FY
0	15,093	10,306	9,639	20,229	Tons of MSW Bypassed to the SW Cells during FY
25,333	22,518	33,507	49,102	70,141	Tons of MSW Hauled out of the County during FY

cc: Justin Roessler, P.E., Public Infrastructure, Interim Solid Waste Director  
 Tim Treshler, Public Infrastructure, Sr. Project Manager Solid Waste  
 Rachelle Dobbs, Recycling Supervisor



**Pasco County Waste - to - Energy Tonnage Report**

MONTH/ YEAR	WEST PASCO		EAST PASCO		TOTAL PASCO	HERNANDO		PROCESSABLE WASTE		ASH TOTAL TONS	DAILY AVG	% ASH/ MSW	RECYCLING TOTAL TONS	MEGA WATTS MONTHLY GEN.	12 MONTH ROLLING AVERAGE
	TONS	DAILY AVG	LOADS	TONS		DAILY AVG	WASTE	DAILY AVG	TOTAL TONS						
Oct-21	25,707.13	829.26	72	1,681.68	27,388.81	0.00	0.00	27,388.81	883.51	5,770.18	186.13	0.21	747.83	17.33	18.95
Nov-21	28,746.52	958.22	97	2,276.24	31,022.76	0.00	0.00	31,022.76	1,034.09	6,563.20	218.77	0.21	813.25	22.04	18.87
Dec-21	28,540.54	920.66	98	2,277.76	30,818.30	0.00	0.00	30,818.30	994.14	6,646.15	214.39	0.22	946.06	not yet available	
Jan-22															
Feb-22															
Mar-22															
Apr-22															
May-22															
Jun-22															
Jul-22															
Aug-22															
Sep-22															
Total 22	82,994.19	902.71	267	6,235.68	89,229.87	0.00	0.00	89,229.87	970.58	18,979.53	206.43	0.21	2,507.14	39.37	
Average22	27,664.73	902.71	89	2,078.56	29,743.29	0.00	0.00	29,743.29	970.58	6,326.51	206.43	0.21	835.71	19.69	

Pasco County Waste - to - Energy Tonnage Report

MONTH/ YEAR	WEST PASCO		EAST PASCO		HERNANDO		PROCESSABLE WASTE		ASH		% ASH/ MSW		RECYCLING		MEGA WATTS	
	TONS	DAILY AVG	LOADS	TONS	DAILY AVG	WASTE	DAILY AVG	TOTAL TONS	DAILY AVG	TOTAL TONS	DAILY AVG	%	TOTAL TONS	MONTHLY GEN.	12 MONTH ROLLING AVERAGE	
Oct-18	24,600.84	793.58	145	3,077.07	99.26	27,677.91	892.84	27,677.91	892.84	6,679.64	215.47	0.24	617.46	15.54	21.67	
Nov-18	23,792.76	793.09	326	7,013.06	233.77	30,805.82	1,026.86	30,805.82	1,026.86	7,128.17	237.61	0.23	705.13	23.55	21.75	
Dec-18	24,223.27	781.40	341	7,461.50	240.69	31,684.77	1,022.09	31,684.77	1,022.09	7,299.03	235.45	0.23	731.47	22.85	21.71	
Jan-19	25,700.47	829.05	207	4,523.45	145.92	30,223.92	974.97	30,223.92	974.97	7,548.85	243.41	0.25	845.16	23.82	21.74	
Feb-19	13,947.11	498.11	45	954.93	34.10	14,902.04	532.22	14,902.04	532.22	5,808.39	207.37	0.39	772.80	17.15	21.32	
Mar-19	23,558.92	759.97	195	4,184.45	134.98	27,743.37	894.95	27,743.37	894.95	4,848.22	156.39	0.17	801.16	15.61	21.12	
Apr-19	25,790.72	859.69	155	3,379.31	112.64	29,170.03	972.33	29,170.03	972.33	7,467.67	248.92	0.26	746.37	23.51	21.24	
May-19	25,337.26	817.33	297	6,385.45	205.98	31,722.71	1,023.31	31,722.71	1,023.31	7,565.51	244.05	0.24	753.53	22.85	21.15	
Jun-19	23,179.88	772.66	62	1,307.23	43.57	24,487.11	816.24	24,487.11	816.24	7,232.09	241.07	0.30	657.88	21.38	21.20	
Jul-19	26,746.94	862.80	258	5,599.82	180.64	32,346.76	1,043.44	32,346.76	1,043.44	8,233.49	265.60	0.25	830.30	23.10	21.25	
Aug-19	25,772.25	831.36	358	7,866.53	253.76	33,638.78	1,085.12	33,638.78	1,085.12	7,882.45	254.27	0.23	655.80	24.00	21.35	
Sep-19	23,118.96	770.63	250	5,471.99	182.40	28,590.95	953.03	28,590.95	953.03	7,424.42	247.48	0.26	594.08	24.00	21.41	
Total 19	285,769.38	780.81	2,639	57,224.79	155.64	342,994.17	936.45	342,994.17	936.45	85,112.93	233.09	0.25	8,511.14	256.86		
Average19	23,814.12	780.81	220	4,768.73	155.64	28,582.85	936.45	28,582.85	936.45	7,092.74	233.09	0.25	709.26	21.41		
Oct-19	25,083.98	809.16	91	2,006.06	64.71	27,090.04	873.87	27,090.04	873.87	6,368.82	205.45	0.24	691.25	16.19	21.46	
Nov-19	23,373.85	779.13	231	5,238.45	174.62	28,612.30	853.74	28,612.30	853.74	7,892.60	263.09	0.28	627.57	23.72	21.47	
Dec-19	26,528.40	855.75	201	4,404.19	142.07	30,932.59	997.83	30,932.59	997.83	7,909.93	255.16	0.26	582.16	23.59	21.54	
Jan-20	26,052.32	840.40	90	1,943.25	62.69	27,995.57	903.08	27,995.57	903.08	7,859.24	253.52	0.28	774.90	23.50	21.55	
Feb-20	24,525.08	845.69	84	1,816.83	62.65	26,341.91	908.34	26,341.91	908.34	7,396.71	255.06	0.28	595.05	23.13	22.05	
Mar-20	26,594.43	857.88	97	2,142.69	69.12	28,737.12	927.00	28,737.12	927.00	6,131.77	197.80	0.21	433.80	16.63	22.13	
Apr-20	26,499.88	854.68	107	2,314.56	74.66	28,809.59	929.34	28,809.59	929.34	7,918.16	255.42	0.27	166.63	23.73	22.15	
May-20	23,903.90	824.27	231	4,947.23	170.59	28,851.13	994.87	28,851.13	994.87	7,532.58	259.74	0.26	0.00	22.79	22.23	
Jun-20	22,107.23	713.14	203	4,369.26	140.94	26,476.49	854.08	26,476.49	854.08	7,228.25	233.17	0.27	78.10	23.89	22.36	
Jul-20	28,114.96	906.93	273	5,882.57	189.76	33,997.53	1,096.69	33,997.53	1,096.69	7,467.56	240.89	0.22	745.93	22.99	22.35	
Aug-20	29,366.37	1,012.63	231	4,947.23	170.59	34,313.60	1,183.23	34,313.60	1,183.23	7,128.44	245.81	0.21	619.51	22.39	22.21	
Sep-20	27,026.56	871.82	170	3,690.34	119.04	30,716.90	990.87	30,716.90	990.87	7,460.15	240.65	0.24	732.02	22.53	22.09	
Total 20	309,172.11	847.62	2,009	43,702.66	120.12	352,874.77	967.75	352,874.77	967.75	86,294.21	242.15	0.25	6,046.92	285.08		
Average20	25,764.34	847.62	167	3,641.89	120.12	29,406.23	967.75	29,406.23	967.75	7,357.85	242.15	0.25	503.91	19.96		
Oct-20	23,106.39	745.37	146	3,123.85	100.77	26,230.24	846.14	26,230.24	846.14	5,959.95	192.26	0.23	753.21	15.11	22.00	
Nov-20	26,360.03	878.67	163	3,710.28	123.68	30,070.31	1,002.34	30,070.31	1,002.34	7,117.53	237.25	0.24	294.21	23.00	21.94	
Dec-20	27,599.69	890.31	205	4,656.68	150.22	32,256.37	1,040.53	32,256.37	1,040.53	7,710.85	248.74	0.24	867.60	23.33	21.92	
Jan-21	25,682.03	828.45	92	2,050.73	66.15	27,732.76	894.61	27,732.76	894.61	7,280.59	234.86	0.26	778.59	20.92	21.70	
Feb-21	21,374.61	763.38	116	2,734.40	97.66	24,109.01	861.04	24,109.01	861.04	6,723.19	240.11	0.28	694.61	23.02	21.69	
Mar-21	18,344.45	591.76	211	4,931.21	159.07	23,275.66	750.83	23,275.66	750.83	4,921.98	158.77	0.21	733.13	3.38	20.59	
Apr-21	26,139.89	843.22	158	3,653.06	117.84	29,792.95	961.06	29,792.95	961.06	7,168.07	231.23	0.24	740.51	15.89	19.94	
May-21	26,576.85	857.32	57	1,240.40	40.01	27,817.25	897.33	27,817.25	897.33	6,972.81	224.93	0.25	649.08	24.34	19.98	
Jun-21	27,526.83	917.56	143	3,475.67	115.86	31,002.50	1,033.42	31,002.50	1,033.42	6,639.50	221.32	0.21	724.67	22.86	19.88	
Jul-21	29,266.22	944.07	100	2,457.00	79.26	31,723.22	1,023.33	31,723.22	1,023.33	7,155.48	230.82	0.23	649.76	7.60	18.70	
Aug-21	29,555.59	953.41	79	1,934.64	62.41	31,490.23	1,015.81	31,490.23	1,015.81	6,826.26	220.20	0.22	656.88	22.89	18.74	
Sep-21	28,020.65	934.02	77	1,831.85	61.06	29,852.50	995.08	29,852.50	995.08	6,980.27	232.68	0.23	720.81	22.88	18.77	
Total 21	309,553.23	845.63	1,547	35,799.77	97.83	345,353.00	943.46	345,353.00	943.46	81,456.48	222.76	0.24	8,263.06	225.21		
Average21	25,796.10	845.63	129	2,983.31	97.83	28,779.42	943.46	28,779.42	943.46	6,788.04	222.76	0.24	688.59	19.05		



Pasco County Waste - to - Energy Tonnage Report

MONTH/ YEAR	WEST PASCO		EAST PASCO		HERNANDO		PROCESSABLE WASTE		ASH		% ASH/ MSW	RECYCLING TOTAL TONS	MEGA WATTS	
	TONS	DAILY AVG	LOADS	TONS	DAILY AVG	TOTAL PASCO	DAILY AVG	TOTAL TONS	DAILY AVG	TOTAL TONS			MONTHLY GEN.	12 MONTH ROLLING AVERAGE
Oct-15	24,937.97	804.45	0.00	3,283.94	105.93	28,221.91	0.00	28,221.91	910.38	5,722.23	0.20	242.49	16.36	21.56
Nov-15	21,212.18	707.07	0.00	6,119.90	204.00	27,332.08	0.00	27,332.08	911.07	6,211.75	0.23	277.10	20.52	21.42
Dec-15	23,363.61	753.66	0.00	3,027.99	226.71	30,391.60	0.00	30,391.60	980.37	6,816.88	0.22	314.57	22.92	21.45
Jan-16	21,319.66	687.73	0.00	6,660.51	214.86	27,980.17	0.00	27,980.17	902.59	6,804.52	0.24	369.65	24.08	21.50
Feb-16	22,431.16	773.49	1,965.80	4,573.26	157.70	27,004.42	0.00	27,004.42	931.19	7,066.59	0.26	320.57	24.34	21.60
Mar-16	21,436.39	691.50	2,519.61	1,595.50	159.50	26,380.80	0.00	26,380.80	850.99	5,035.65	0.19	338.00	16.26	21.84
Apr-16	23,519.62	758.70	2,169.59	4,944.41	149.29	28,147.66	0.00	28,147.66	907.99	7,246.98	0.26	380.67	23.93	21.86
May-16	22,973.64	741.09	0.00	6,432.42	207.50	29,406.06	0.00	29,406.06	948.58	7,403.66	0.25	320.36	25.13	21.97
Jun-16	23,128.06	770.94	0.00	6,339.22	211.31	29,467.28	0.00	29,467.28	982.24	6,758.87	0.23	310.80	23.37	22.11
Jul-16	22,538.24	727.04	0.00	5,639.20	181.91	28,177.44	0.00	28,177.44	908.95	7,123.25	0.25	410.75	24.01	22.19
Aug-16	24,625.37	794.37	0.00	6,464.41	208.53	31,089.78	0.00	31,089.78	1,002.90	7,207.85	0.23	432.41	23.36	22.24
Sep-16	24,636.62	821.22	1,816.52	4,409.67	146.99	29,046.29	0.00	29,046.29	968.21	6,535.09	0.22	491.41	23.38	22.30
Total 16 Average16	276,122.52 23,010.21	752.60	8,471.52 705.96	66,522.97 5,543.58	181.18	342,645.49 28,553.79	0.00 0.00	342,645.49 28,553.79	933.79	79,930.32 6,660.86	0.23	4,208.78 350.73	267.66 22.30	22.30
Oct-16	21,923.70	707.22	2,659.78	3,445.44	111.14	25,369.14	0.00	25,369.14	818.36	4,977.41	0.20	443.92	13.52	22.07
Nov-16	22,282.13	742.74	376.12	6,166.94	205.23	28,439.07	0.00	28,439.07	947.97	6,637.72	0.23	479.86	23.37	22.31
Dec-16	23,348.17	777.53	0.00	3,342.85	214.43	29,781.02	0.00	29,781.02	991.96	7,376.60	0.25	613.61	24.50	22.44
Jan-17	23,821.58	768.44	3,930.89	3,172.49	102.34	26,994.07	0.00	26,994.07	870.78	7,236.77	0.27	606.18	24.06	22.44
Feb-17	21,706.46	775.23	4,585.43	73 1,589.20	56.76	23,295.66	0.00	23,295.66	831.99	6,531.49	0.28	554.80	23.33	22.35
Mar-17	24,697.21	796.68	4,203.76	2,922.96	95.58	27,660.17	0.00	27,660.17	892.26	5,283.94	0.19	644.39	13.16	22.09
Apr-17	22,053.22	735.11	2,533.75	3,679.57	126.12	25,836.79	0.00	25,836.79	861.23	6,607.75	0.26	646.18	24.04	22.10
May-17	25,110.57	810.02	686.63	6,019.41	199.40	31,129.98	0.00	31,129.98	1,004.19	7,289.76	0.24	562.42	24.21	22.03
Jun-17	24,985.93	833.20	2,382.53	4,181.86	139.40	29,177.79	0.00	29,177.79	972.59	6,941.19	0.23	651.40	23.56	22.04
Jul-17	23,458.33	786.72	0.00	6,195.25	199.85	29,653.58	0.00	29,653.58	956.57	6,650.33	0.22	528.04	23.56	22.00
Aug-17	24,691.01	796.48	0.00	6,597.06	212.81	31,288.07	0.00	31,288.07	1,009.29	6,682.40	0.21	588.33	23.12	21.98
Sep-17	27,257.46	908.58	3,973.78	3,731.96	124.40	30,989.42	0.00	30,989.42	1,032.98	7,167.68	0.23	333.24	22.61	21.92
Total 17 Average17	285,345.77 23,778.81	784.00	25,332.67 2,111.06	54,288.99 4,522.42	148.52	339,614.76 28,301.23	0.00 0.00	339,614.76 28,301.23	932.51	79,383.04 6,615.25	0.23	6,652.37 554.36	263.05 21.92	21.92
Oct-17	24,449.62	788.70	6,574.18	112.67	3.63	24,562.29	0.00	24,562.29	792.33	5,305.45	0.22	526.36	14.98	22.04
Nov-17	24,249.26	808.31	792.68	6,017.67	200.59	30,266.93	0.00	30,266.93	1,008.90	7,044.69	0.23	575.01	22.53	21.97
Dec-17	22,843.90	736.90	2,640.50	4,148.95	133.84	26,992.85	0.00	26,992.85	870.74	6,734.91	0.25	732.89	23.34	21.88
Jan-18	24,956.87	805.06	6,028.07	70 1,493.72	48.18	26,450.59	0.00	26,450.59	853.24	7,556.99	0.29	707.45	23.05	21.79
Feb-18	23,198.79	773.29	4,020.45	2,988.39	99.61	26,187.18	0.00	26,187.18	872.91	6,747.48	0.26	668.03	22.14	21.69
Mar-18	20,373.50	657.21	2,462.18	5,034.89	162.42	25,408.39	0.00	25,408.39	819.63	6,010.38	0.24	705.98	18.02	22.10
Apr-18	23,294.37	776.48	0.00	7,223.91	240.80	30,518.28	0.00	30,518.28	1,017.28	6,652.15	0.22	661.48	22.08	21.93
May-18	20,009.94	645.48	0.00	7,230.65	233.25	27,240.59	0.00	27,240.59	878.73	7,930.52	0.29	689.93	23.94	21.91
Jun-18	24,149.13	804.97	0.00	6,614.11	220.47	30,763.24	0.00	30,763.24	1,025.44	6,940.41	0.23	715.46	20.79	21.68
Jul-18	23,012.73	767.09	0.00	7,214.64	240.49	30,227.37	0.00	30,227.37	1,007.58	7,428.73	0.25	570.31	22.44	21.59
Aug-18	26,262.28	847.17	0.00	7,164.50	230.79	33,416.78	0.00	33,416.78	1,077.96	7,765.86	0.23	682.98	22.79	21.56
Sep-18	22,850.11	761.67	0.00	6,237.35	207.91	29,087.46	0.00	29,087.46	969.58	7,735.40	0.27	637.65	23.38	21.62
Total 18 Average18	279,650.50 23,304.21	764.36	22,518.06 1,876.51	61,471.45 5,122.62	168.50	341,121.95 28,426.83	0.00 0.00	341,121.95 28,426.83	932.86	83,852.97 6,987.75	0.25	7,873.53 656.13	259.48 21.62	21.62

Pasco County Waste - to - Energy Tonnage Report

MONTH/ YEAR	WEST PASCO		EAST PASCO		HERNANDO		PROCESSABLE WASTE		ASH		% ASH/ MSW	RECYCLING TOTAL TONS	MEGA WATTS MONTHLY GEN.	12 MONTH ROLLING AVERAGE
	TONS	DAILY AVG	LOADS	TONS	DAILY AVG	TOTAL PASCO	DAILY AVG	TOTAL TONS	DAILY AVG	TOTAL TONS				
Oct-12	21,498.02	693.48	0.00	5,055.95	163.09	26,553.95	856.58	5,040.41	162.59	0.19	331.58	15.58	20.78	
Nov-12	20,844.04	694.80	0.00	4,965.76	165.53	25,809.80	860.33	6,731.67	224.39	0.26	318.34	23.72	20.79	
Dec-12	20,729.48	668.69	0.00	4,985.57	160.82	25,717.05	829.52	7,238.16	233.49	0.28	323.13	23.40	20.84	
Jan-13	22,137.05	714.10	0.00	5,973.72	192.70	28,110.77	906.80	6,662.24	214.91	0.24	396.93	22.09	20.77	
Feb-13	19,637.04	701.32	0.00	4,893.85	174.78	24,530.89	876.10	5,728.97	204.61	0.23	377.74	20.71	20.93	
Mar-13	21,053.51	679.15	0.00	5,496.08	177.29	26,549.59	856.44	4,993.54	161.08	0.19	325.66	15.23	20.69	
Apr-13	22,463.81	748.79	0.00	6,063.50	202.12	28,527.31	950.91	6,920.64	230.69	0.24	387.15	23.19	20.62	
May-13	21,483.10	693.00	0.00	5,535.85	178.58	27,018.95	871.58	7,292.25	235.23	0.27	309.15	23.91	20.61	
Jun-13	20,707.27	690.24	0.00	5,155.19	171.84	25,862.46	862.08	6,161.26	205.38	0.24	311.20	21.81	20.56	
Jul-13	23,842.30	769.11	0.00	5,650.76	182.28	29,493.06	951.39	7,323.12	236.23	0.25	347.37	21.68	20.66	
Aug-13	21,388.94	689.97	0.00	4,335.15	172.10	26,724.09	862.07	6,504.90	209.84	0.24	352.82	19.94	20.78	
Sep-13	19,995.74	666.52	0.00	4,982.89	166.10	24,978.63	832.62	6,263.23	208.77	0.25	363.11	19.56	20.90	
Total 13	255,780.30	700.77	0.00	64,094.25	175.60	319,876.55	876.37	76,860.39	210.60	0.24	4,144.18	250.83		
Average13	21,315.03	700.77	0.00	5,341.19	175.60	26,656.38	876.37	6,405.03	210.60	0.24	345.35	20.90		
Oct-13	20,927.91	675.09	0.00	5,524.55	178.21	26,452.46	853.31	4,973.40	160.43	0.19	369.17	14.86	20.84	
Nov-13	19,773.80	669.13	0.00	5,204.16	173.47	24,977.96	832.60	7,047.89	234.93	0.28	347.08	22.80	20.77	
Dec-13	21,364.24	689.17	0.00	6,337.92	204.45	27,702.16	893.62	6,995.33	225.66	0.25	326.87	23.04	20.74	
Jan-14	20,790.92	670.67	0.00	5,080.30	196.14	26,871.22	866.81	5,930.14	191.29	0.22	450.74	21.92	20.72	
Feb-14	19,309.22	689.62	0.00	5,587.86	199.87	24,897.08	889.18	5,920.55	211.45	0.24	408.79	20.66	20.72	
Mar-14	21,090.88	680.35	0.00	6,721.84	216.83	27,812.72	897.18	3,442.29	111.04	0.12	388.58	0.62	19.50	
Apr-14	21,120.22	704.01	0.00	6,383.33	215.63	27,503.55	916.79	6,396.24	213.21	0.23	747.83	21.88	19.39	
May-14	21,381.58	689.73	0.00	5,703.43	183.98	27,085.01	873.71	6,892.66	222.34	0.25	813.25	22.91	19.31	
Jun-14	24,209.24	806.97	1,195.50	6,422.63	150.75	28,731.87	957.73	6,651.99	221.73	0.23	946.06	21.67	19.29	
Jul-14	22,068.26	711.88	0.00	5,791.77	186.83	27,860.03	898.71	7,760.80	250.35	0.28	353.23	23.37	19.44	
Aug-14	20,218.17	652.20	0.00	5,443.54	175.60	25,661.71	827.80	6,905.28	222.75	0.27	381.22	23.47	19.73	
Sep-14	21,765.65	725.52	0.00	5,743.53	191.45	27,509.18	916.97	6,548.30	218.28	0.24	340.22	21.76	19.91	
Total 14	254,020.09	696.20	1,195.50	68,044.86	189.17	323,064.95	885.37	75,464.87	206.96	0.23	5,873.05	238.96		
Average14	21,168.34	696.20	99.63	5,753.74	189.17	26,922.08	885.37	6,288.74	206.96	0.23	489.42	19.91		
Oct-14	21,440.98	691.64	0.00	5,861.08	189.07	27,302.06	880.71	5,237.49	168.95	0.19	327.40	14.83	19.91	
Nov-14	19,182.38	639.41	0.00	5,354.51	178.48	24,536.89	817.90	6,067.99	202.27	0.25	420.39	22.20	19.86	
Dec-14	23,630.53	762.28	0.00	6,870.62	221.63	30,501.15	983.91	6,530.63	210.67	0.21	407.98	22.50	19.82	
Jan-15	22,255.21	717.91	0.00	6,387.76	206.06	28,642.97	923.97	6,548.92	211.26	0.23	495.71	23.53	19.95	
Feb-15	19,681.98	702.93	0.00	5,884.78	210.17	25,566.76	913.10	6,337.37	226.33	0.25	357.17	23.06	20.15	
Mar-15	24,028.75	775.12	575.06	6,444.36	214.33	30,673.11	989.46	4,654.86	150.16	0.15	384.56	13.36	21.21	
Apr-15	22,126.72	737.56	0.00	6,798.35	226.81	28,925.07	964.17	6,528.72	217.62	0.23	390.91	23.72	21.37	
May-15	21,425.59	691.15	0.00	5,766.89	186.03	27,192.48	877.18	7,091.90	228.77	0.26	398.13	23.81	21.44	
Jun-15	22,612.79	753.76	0.00	6,124.56	204.15	28,737.35	957.91	6,338.58	211.29	0.22	337.63	21.71	21.44	
Jul-15	23,316.57	752.15	0.00	6,001.41	193.59	29,317.98	945.74	7,085.65	228.57	0.24	341.88	23.09	21.42	
Aug-15	22,541.07	727.13	0.00	6,158.58	198.66	28,699.65	925.80	7,039.96	227.10	0.25	363.26	22.74	21.36	
Sep-15	21,834.43	727.81	0.00	5,691.75	189.73	27,526.16	917.54	7,259.31	241.98	0.26	348.07	22.57	21.43	
Total 15	264,077.00	723.24	575.06	73,544.65	201.54	337,621.65	924.78	76,721.38	210.41	0.23	4,573.09	257.14		
Average15	22,006.42	723.24	47.92	6,128.72	201.54	28,135.14	924.78	6,393.45	210.41	0.23	381.09	21.43		

**Pasco County Waste - to - Energy Tonnage Report**

MONTH/ YEAR	WEST PASCO		EAST PASCO		HERNANDO		PROCESSABLE WASTE		ASH		% ASH/ MSW	RECYCLING TOTAL TONS	MEGA WATTS MONTHLY GEN.	12 MONTH ROLLING AVERAGE	
	TONS	DAILY AVG	LOADS	TONS	DAILY AVG	TOTAL PASCO	DAILY AVG	TOTAL TONS	DAILY AVG	TOTAL TONS					DAILY AVG
Oct-09	21,180.31	683.24	224	4,688.85	151.29	25,870.16	834.52	1,131.26	36.49	27,001.42	871.01	4,886.25	160.85	12.28	19.50
Nov-09	18,327.79	610.93	39	835.06	27.84	19,162.85	638.76	1,557.75	51.93	20,720.60	690.69	5,685.49	189.52	15.08	19.05
Dec-09	24,929.69	804.18	125	2,738.73	88.35	27,668.42	892.53	1,738.08	56.07	29,406.50	948.60	8,889.75	241.14	24.14	19.20
Jan-10	20,843.53	675.60	102	2,280.66	73.57	23,224.19	749.17	1,684.42	54.34	24,908.61	803.50	6,716.77	216.67	22.04	19.29
Feb-10	20,347.53	726.70	110	2,447.53	87.41	22,795.06	814.11	1,659.21	59.26	24,454.27	873.37	6,700.33	239.30	22.70	19.35
Mar-10	25,477.85	821.87	117	2,572.59	82.99	28,050.44	904.85	2,013.48	64.95	30,063.92	969.80	7,149.46	230.63	20.86	20.09
Apr-10	21,496.75	716.56	5	1,120.08	3.74	21,608.83	720.29	1,870.88	62.36	23,479.71	782.66	4,223.04	140.77	10.55	19.00
May-10	25,555.46	824.37	116	2,468.65	79.63	28,024.11	904.00	1,742.49	56.21	29,766.60	960.21	9,038.49	291.56	23.61	19.15
Jun-10	21,996.23	733.21	246	5,364.54	178.82	27,360.77	912.03	1,829.57	60.99	29,190.34	973.01	7,315.29	243.84	23.18	19.28
Jul-10	22,219.65	716.76	231	4,975.42	160.50	27,195.07	877.26	1,836.12	59.23	29,031.19	936.49	7,407.31	238.95	22.37	19.85
Aug-10	23,004.90	742.09	229	5,080.87	163.90	28,085.77	905.99	1,849.12	59.65	29,934.89	965.64	7,295.74	235.35	21.30	19.97
Sep-10	20,800.48	693.35	136	3,003.45	100.12	23,803.93	793.46	1,596.96	53.23	25,400.89	848.70	7,326.15	244.21	23.26	20.11
Total 10	266,280.17		1,680	36,569.43		302,849.60		20,509.34		323,358.94		82,734.07		241.37	
Average10	22,190.01	729.07	140	3,047.45	99.84	25,237.47	828.92	1,709.11	56.22	26,946.58	885.14	6,894.51	226.53	20.11	20.11
Oct-10	17,909.66	577.73	13	265.02	8.55	18,175.27	586.28	0.59	0.02	18,175.27	586.30	4,160.13	134.20	11.72	20.07
Nov-10	24,637.35	821.25	111	2,439.91	81.33	27,077.26	902.58	0.00	0.00	27,077.26	902.58	7,310.48	243.68	23.88	20.80
Dec-10	23,650.70	762.93	241	5,245.42	169.21	28,896.12	932.13	0.00	0.00	28,896.12	932.13	8,022.12	258.78	21.71	20.60
Jan-11	21,474.94	692.74	262	5,853.45	188.82	27,328.39	881.56	0.00	0.00	27,328.39	881.56	6,763.71	218.18	21.58	20.56
Feb-11	20,480.04	731.43	240	5,323.67	190.13	25,803.71	921.56	0.00	0.00	25,803.71	921.56	6,542.47	233.66	23.79	20.65
Mar-11	21,972.72	708.80	312	6,941.55	223.92	28,914.27	932.72	0.00	0.00	28,914.27	932.72	6,453.41	208.17	19.85	20.57
Apr-11	23,416.69	780.56	161	3,517.21	117.24	26,933.90	897.80	0.00	0.00	26,933.90	897.80	5,201.95	173.40	13.43	20.81
May-11	26,260.08	847.10	236	6,062.33	163.30	31,322.41	1,010.40	0.00	0.00	31,322.41	1,010.40	8,953.86	288.83	24.24	20.86
Jun-11	20,625.71	687.52	220	5,006.81	166.89	25,632.52	854.42	0.00	0.00	25,632.52	854.42	7,263.76	242.13	23.28	20.87
Jul-11	20,129.21	649.33	220	4,870.67	157.12	24,999.88	806.45	0.00	0.00	24,999.88	806.45	6,671.64	215.21	21.80	20.82
Aug-11	22,198.98	716.10	231	5,118.22	165.10	27,317.20	881.20	0.00	0.00	27,317.20	881.20	7,165.84	231.16	20.21	20.73
Sep-11	20,698.35	689.95	216	4,756.15	158.54	25,454.50	848.48	0.00	0.00	25,454.50	848.48	6,748.25	224.94	22.09	20.63
Total 11	263,454.43		2,465	54,400.41		317,855.43		0.59		317,855.43		81,257.62		247.58	
Average11	21,954.54	722.12	205	4,533.37	149.18	26,487.95	871.30	0.05	0.00	26,487.95	871.30	6,771.47	222.70	20.63	20.63
Oct-11	19,732.17	636.52	217	4,776.34	154.08	24,508.51	790.60	0.00	0.00	24,508.51	790.60	4,764.54	153.69	13.45	20.76
Nov-11	20,731.22	691.04	231	5,110.60	170.35	25,841.82	861.39	0.00	0.00	25,841.82	861.39	6,727.09	224.24	23.56	20.75
Dec-11	20,739.42	669.01	239	5,259.97	169.68	25,999.39	838.69	0.00	0.00	25,999.39	838.69	7,200.92	232.29	22.88	20.85
Jan-12	20,797.58	670.89	250	5,451.30	175.85	26,248.88	846.74	0.00	0.00	26,248.88	846.74	6,908.97	222.87	22.86	20.95
Feb-12	20,373.11	702.52	236	5,277.71	181.99	25,650.82	894.51	0.00	0.00	25,650.82	894.51	5,951.54	205.23	18.85	20.54
Mar-12	22,771.24	734.56	273	6,050.52	195.18	28,821.76	929.73	0.00	0.00	28,821.76	929.73	5,655.72	182.44	18.08	20.39
Apr-12	21,028.65	700.96	243	5,393.95	179.80	26,422.60	880.75	0.00	0.00	26,422.60	880.75	6,815.60	227.19	23.99	21.27
May-12	21,680.33	699.37	230	5,057.24	163.14	26,737.57	862.50	0.00	0.00	26,737.57	862.50	7,157.43	230.88	24.13	21.26
Jun-12	22,920.46	764.02	226	4,978.70	165.96	27,899.16	929.97	0.00	0.00	27,899.16	929.97	6,790.95	226.37	22.37	21.19
Jul-12	23,225.72	749.22	228	5,061.49	163.27	28,287.21	912.49	0.00	0.00	28,287.21	912.49	6,623.27	213.65	20.47	21.08
Aug-12	22,545.47	727.27	227	5,022.33	162.01	27,567.80	889.28	0.00	0.00	27,567.80	889.28	5,953.22	192.04	18.48	20.93
Sep-12	19,741.69	686.06	197	4,383.66	146.12	24,125.35	804.18	0.00	0.00	24,125.35	804.18	5,776.06	192.54	18.12	20.60
Total 12	256,287.06		2,797	61,823.81		318,110.87		0.00		318,110.87		76,325.31		247.23	
Average12	21,357.26	700.29	233	5,151.98	168.95	26,509.24	869.24	0.00	0.00	26,509.24	869.24	6,360.44	208.62	20.60	20.60

Pasco County Waste - to - Energy Tonnage Report

MONTH/ YEAR	WEST PASCO		EAST PASCO		HERNANDO		PROCESSABLE WASTE		ASH		RECYCLING TOTAL TONS	MEGA WATTS MONTHLY GEN.	WATTS 12 MONTH ROLLING AVERAGE
	TONS	DAILY AVG	LOADS	TONS	DAILY AVG	WASTE	DAILY AVG	TOTAL TONS	DAILY AVG	% ASH/ MSW			
Oct 06	10,546.93	340.22	276	5,215.40	168.24	0.00	15,762.33	508.46	4,030.48	130.02	228.88	8.45	19.92
Nov 06	25,296.95	843.23	288	5,709.93	190.33	0.00	31,006.88	1,033.56	7,683.51	259.12	225.47	22.40	19.87
Dec 06	19,857.48	640.56	281	5,633.48	181.73	0.00	25,490.97	822.29	7,966.88	265.00	259.18	22.57	19.81
Jan 07	22,938.13	739.94	356	7,247.13	233.78	0.00	30,185.26	973.72	8,224.81	265.32	208.40	21.63	19.78
Feb 07	13,576.88	484.89	310	6,240.02	222.66	0.00	19,816.90	707.75	5,483.85	195.85	208.40	13.77	20.38
Mar 07	19,791.48	638.43	350	7,066.48	227.95	0.00	26,857.96	866.39	7,836.05	252.78	244.80	23.23	20.40
Apr 07	22,508.49	750.28	353	6,675.67	222.52	0.00	29,184.16	972.81	8,589.91	286.33	226.46	24.82	20.55
May 07	24,610.06	793.87	337	6,272.69	202.34	0.00	30,882.75	996.22	8,418.52	271.57	229.16	23.27	20.48
Jun 07	23,005.95	766.87	299	5,877.92	195.93	0.00	28,883.87	962.80	7,870.70	265.69	212.60	22.41	20.49
Jul 07	24,871.95	802.32	317	6,419.59	207.08	0.00	31,291.54	1,009.40	8,066.03	260.19	231.48	21.54	20.35
Aug 07	25,329.78	817.09	306	6,188.37	199.62	0.00	31,518.15	1,016.71	8,224.14	265.29	232.59	23.27	20.55
Sep 07	19,561.70	652.06	273	5,513.92	183.80	0.00	25,075.62	835.85	7,737.57	257.92	214.03	22.62	20.83
Total 07	251,895.79	689.15	3,746	74,060.60	203.02	0.00	325,956.39	892.16	90,232.45	247.01	2,756.66	249.97	
Average07	20,991.32	689.15	312	6,171.72	203.02	0.00	27,163.03	892.16	7,519.37	247.01	229.72	20.83	
Oct-07	23,045.19	743.39	264	5,314.99	171.45	0.00	28,360.18	914.84	6,414.49	206.92	236.18	16.26	21.48
Nov-07	24,251.52	808.38	187	3,926.72	130.89	0.00	28,178.24	939.27	8,458.92	281.96	222.26	24.72	21.67
Dec-07	24,771.61	799.08	258	5,225.58	168.57	0.00	29,997.19	967.65	7,999.79	258.06	268.78	23.93	21.79
Jan-08	28,076.22	905.68	106	2,179.14	70.29	0.00	30,255.36	975.98	7,498.77	241.90	302.92	22.44	21.86
Feb-08	24,399.87	841.37	72	1,563.42	53.57	0.00	25,953.29	894.94	7,618.26	262.70	272.48	24.00	22.71
Mar-08	26,275.89	847.61	197	4,112.23	132.65	0.00	30,388.12	980.26	7,653.65	246.89	288.24	21.89	22.60
Apr-08	25,885.92	862.86	3	6.98	0.23	0.00	25,892.90	863.10	5,242.98	174.77	281.17	14.77	21.76
May-08	24,052.97	775.90	88	1,892.19	61.04	0.00	25,945.16	836.94	8,597.32	277.33	189.34	24.11	21.83
Jun-08	23,703.87	790.13	183	3,914.60	130.49	0.00	27,618.47	920.62	8,001.32	266.71	274.88	24.52	22.00
Jul-08	26,972.89	870.09	271	5,652.08	182.33	0.00	32,624.97	1,052.42	7,842.84	252.99	287.84	20.65	21.93
Aug-08	23,829.86	768.71	220	4,596.17	148.26	0.00	28,426.03	916.97	7,586.09	247.94	260.51	23.18	21.92
Sep-08	22,866.26	762.21	196	4,022.79	134.09	0.00	26,889.05	896.30	7,762.61	256.75	261.42	21.78	21.85
Total 08	298,132.07	814.62	2,045	42,396.89	115.32	0.00	340,528.96	929.94	90,777.04	248.08	3,146.02	262.25	
Average08	24,844.34	814.62	170	3,533.07	115.32	0.00	28,377.41	929.94	7,564.75	248.08	262.17	21.85	
Oct-08	23,076.17	744.39	232	4,672.71	150.73	0.00	27,748.88	895.13	6,658.72	214.80	274.34	16.38	21.86
Nov-08	20,314.76	677.16	199	3,869.03	128.97	0.00	24,183.79	806.13	6,493.18	216.44	247.67	20.39	21.50
Dec-08	23,992.83	773.96	222	4,607.44	148.63	0.00	28,600.27	922.59	7,869.64	253.86	308.95	22.42	21.38
Jan-09	22,781.73	734.89	237	4,844.33	156.27	0.00	27,626.06	891.16	7,102.45	229.11	342.73	20.99	21.26
Feb-09	20,852.55	744.73	165	3,418.60	122.09	0.00	24,271.15	866.83	6,939.37	247.83	301.51	21.97	21.09
Mar-09	24,253.15	782.36	19	371.68	11.99	0.00	24,624.83	794.35	5,046.67	162.80	359.08	12.01	20.26
Apr-09	23,567.97	785.60	15	323.12	10.77	0.00	23,891.09	796.37	7,662.90	255.43	350.98	23.58	21.00
May-09	22,748.11	733.81	128	2,799.55	90.31	0.00	25,547.66	824.12	7,428.22	239.62	300.49	21.85	20.81
Jun-09	23,749.43	791.65	167	3,608.95	120.30	0.00	27,358.38	911.95	7,840.18	261.34	291.82	21.53	20.56
Jul-09	23,644.42	762.72	179	3,938.89	127.09	0.00	27,584.31	889.82	5,920.28	190.98	293.20	15.53	20.13
Aug-09	22,195.97	716.00	247	5,256.84	169.58	0.00	27,452.81	885.57	7,131.12	230.04	265.84	19.88	19.86
Sep-09	21,689.70	723.32	252	5,332.18	177.74	0.00	27,031.88	901.06	7,141.74	238.06	261.98	21.53	19.84
Total 09	272,876.79	747.55	2,062	43,044.32	117.87	0.00	315,921.11	865.42	83,234.47	228.36	3,598.59	238.06	
Average09	22,739.73	747.55	172	3,587.03	117.87	0.00	26,326.76	865.42	6,936.21	228.36	299.88	19.84	

Pasco County Waste - to - Energy Tonnage Report

MONTH/ YEAR	WEST PASCO		EAST PASCO		HERNANDO		PROCESSABLE WASTE		ASH		% ASH/ MSW	RECYCLING TOTAL TONS	MEGA WATTS	
	TONS	DAILY AVG	LOADS	TONS	DAILY AVG	WASTE	DAILY AVG	TOTAL TONS	DAILY AVG	DAILY AVG			MONTHLY GEN.	12 MONTH ROLLING AVERAGE
Oct 03	21,907.80	706.70	294	6,350.01	204.84	0.00	0.00	28,257.81	911.54	9,230.21	0.33	187.25	23.50	21.63
Nov 03	20,972.68	699.09	275	5,933.04	197.77	0.00	0.00	26,905.72	896.86	8,164.05	0.30	167.03	23.40	21.88
Dec 03	22,771.81	734.57	332	6,967.23	224.75	0.00	0.00	29,739.04	959.32	8,143.00	0.27	208.89	23.09	21.81
Jan 04	22,552.24	727.49	343	7,337.80	236.70	0.00	0.00	29,890.04	964.19	8,120.39	0.27	228.03	23.28	22.33
Feb 04	21,419.69	764.99	323	6,905.32	246.62	0.00	0.00	28,325.01	1,011.61	7,641.34	0.27	204.61	20.94	22.29
Mar 04	22,345.65	720.83	414	8,620.53	284.53	0.00	0.00	31,166.18	1,005.36	8,353.84	0.20	238.11	14.96	21.60
Apr 04	21,089.12	702.97	380	8,077.21	269.24	0.00	0.00	29,166.33	972.21	8,135.55	0.28	231.78	23.16	21.65
May 04	21,556.48	695.37	335	7,157.13	230.88	0.00	0.00	28,713.61	926.25	8,478.76	0.30	193.86	22.89	21.64
Jun 04	22,481.91	749.40	332	7,290.70	243.02	0.00	0.00	29,772.61	992.42	8,077.51	0.27	200.61	21.65	21.55
Jul 04	22,884.54	738.21	327	7,170.58	231.31	0.00	0.00	30,055.12	969.52	8,506.18	0.28	191.95	21.55	21.48
Aug 04	23,184.54	747.89	325	7,294.42	235.30	0.00	0.00	30,478.96	983.19	8,806.05	0.29	192.36	22.99	22.11
Sep 04	25,976.59	837.95	358	8,038.00	259.29	0.00	0.00	34,014.59	1,097.24	7,673.00	0.23	209.19	21.14	21.88
Total 04	269,143.05		4,038	87,341.97	2,338.69	0.00	0.00	356,485.02	974.14	97,329.88	0.27	2,453.67	262.55	
Average04	22,428.59	735.46	337	7,278.50	238.69	0.00	0.00	29,707.09	974.14	8,110.82	0.27	204.47	21.88	
Oct 04	11,736.44	378.59	348	7,596.30	245.04	0.00	0.00	19,332.74	623.64	5,604.91	0.29	203.23	13.96	21.08
Nov 04	20,613.33	667.11	355	7,711.99	257.07	0.00	0.00	28,325.32	944.18	7,959.89	0.28	190.51	22.07	20.97
Dec 04	16,018.98	516.74	383	7,825.57	252.44	0.00	0.00	23,844.55	769.18	8,656.58	0.36	212.85	22.86	20.95
Jan 05	16,927.80	546.06	362	7,795.85	251.48	0.00	0.00	24,723.65	797.54	7,976.42	0.32	236.81	21.39	20.80
Feb 05	21,715.73	700.51	156	3,703.64	119.47	0.00	0.00	25,419.37	819.98	2,436.66	0.30	204.62	10.64	20.47
Mar 05	10,396.45	335.37	416	8,951.55	288.76	0.00	0.00	19,348.00	624.13	5,046.05	0.26	230.44	10.64	20.47
Apr 05	16,988.68	566.29	377	7,981.43	266.05	0.00	0.00	24,970.11	832.34	7,970.34	0.32	225.52	22.19	20.39
May 05	23,638.44	787.95	353	6,962.90	232.10	0.00	0.00	30,601.34	1,020.04	8,921.38	0.29	211.92	23.44	20.43
Jun 05	25,477.24	849.24	329	6,904.78	230.16	0.00	0.00	32,382.02	1,079.40	8,355.30	0.26	211.55	21.72	20.44
Jul 05	24,432.32	814.41	319	6,790.55	226.35	0.00	0.00	31,222.87	1,040.76	8,620.73	0.28	198.12	22.74	20.54
Aug 05	25,750.36	830.66	330	6,977.37	225.08	0.00	0.00	32,727.73	1,055.73	8,946.38	0.27	211.78	22.68	20.51
Sep 05	23,243.76	774.79	284	6,030.38	201.01	0.00	0.00	29,274.14	975.80	8,071.52	0.28	209.33	22.45	20.62
Total 05	236,935.53	648.98	4,012	85,232.31	232.92	0.00	0.00	322,171.84	881.89	93,682.84	0.29	2,556.68	247.48	
Average05	19,744.96	648.98	334	7,102.69	232.92	0.00	0.00	26,847.65	881.89	7,806.90	0.29	213.06	20.62	
Oct 05	15,396.01	496.65	284	6,085.76	196.31	0.00	0.00	22,602.52	692.96	5,620.72	0.26	210.69	13.34	20.57
Nov 05	27,035.70	901.19	66	817.45	27.25	0.00	0.00	27,853.15	928.44	8,211.93	0.29	226.55	22.98	20.65
Dec 05	30,949.94	998.35	27	138.81	4.48	0.00	0.00	31,087.75	1,002.83	8,190.64	0.26	232.48	23.34	20.69
Jan 06	21,468.13	692.52	22	98.10	3.16	0.00	0.00	21,566.23	695.68	7,913.01	0.30	250.93	22.03	20.74
Feb 06	14,635.31	522.69	19	102.16	3.65	0.00	0.00	14,737.47	526.34	4,476.19	0.30	208.37	6.53	19.51
Mar 06	25,897.81	835.41	337	6,908.60	222.86	0.00	0.00	32,806.41	1,058.27	7,786.17	0.24	262.62	22.92	20.53
Apr 06	18,632.38	621.08	292	5,941.64	198.05	0.00	0.00	24,574.02	819.13	7,631.53	0.31	238.33	23.10	20.61
May 06	25,526.66	823.44	308	6,116.43	197.30	0.00	0.00	31,643.09	1,020.74	8,877.02	0.19	232.74	24.05	20.66
Jun 06	22,036.18	734.54	282	5,648.05	188.27	0.00	0.00	27,684.23	922.81	7,877.40	0.28	220.05	22.38	20.71
Jul 06	25,419.09	819.97	251	5,144.73	165.96	0.00	0.00	30,563.82	985.93	8,473.91	0.28	210.32	23.10	20.74
Aug 06	24,628.89	794.42	263	5,414.21	174.65	0.00	0.00	30,041.10	969.07	7,764.06	0.26	254.41	20.97	20.60
Sep 06	17,854.76	595.16	255	5,193.99	173.13	0.00	0.00	23,048.75	768.29	7,284.48	0.32	249.71	19.19	20.33
Total 06	269,477.86	736.28	2,406	47,609.93	129.59	0.00	0.00	318,208.54	865.87	90,137.06	0.28	2,797.20	243.94	
Average06	22,456.49	736.28	201	3,967.49	129.59	0.00	0.00	26,517.38	865.87	7,511.42	0.28	233.10	20.33	

Pasco County Waste - to - Energy Tonnage Report

MONTH/ YEAR	WEST PASCO		EAST PASCO		TOTAL PASCO	HERNANDO		PLANT CITY		HILLSBOROUGH		SUMTER		CITRUS		PROCESSABLE WASTE		ASH TOTAL TONS	% ASH/ MSW	RECYCLING TOTAL TONS	MEGA WATTS			
	TONS	DAILY AVG	LOADS	TONS		DAILY AVG	WASTE	AVG	WASTE	AVG	DAILY AVG	WASTE	AVG	DAILY AVG	WASTE	AVG	DAILY AVG				TOTAL TONS	MONTHLY	12 MONTH ROLLING AVERAGE	
Oct 00	17,608.74	568.02	334	5,053.61	163.02	22,662.35	731.04	94.33	2,118.51	68.34	0.00	0.00	0.00	0.00	0.00	27,705.05	893.71	5,435.60	175.34	0.20	183.12	14.05	18.80	
Nov 00	17,291.86	576.40	369	5,892.07	196.40	23,183.93	772.80	91.12	2,068.29	68.98	0.00	0.00	0.00	0.00	0.00	27,963.80	932.79	6,294.53	276.48	0.30	193.41	25.84	19.50	
Dec 00	16,628.92	536.42	360	5,721.84	184.58	22,350.76	720.99	87.81	2,081.24	66.49	0.00	0.00	0.00	0.00	0.00	27,137.21	918.28	7,743.33	249.78	0.29	200.16	23.89	19.59	
Jan 01	18,736.92	604.39	399	6,358.17	205.10	25,095.10	808.99	102.98	2,256.93	72.60	0.00	0.00	0.00	0.00	0.00	29,543.67	965.28	8,585.58	276.95	0.28	232.66	24.25	20.19	
Feb 01	18,491.68	608.42	371	6,073.80	214.78	24,565.46	812.44	104.73	2,020.93	82.77	0.00	0.00	0.00	0.00	0.00	29,458.61	1,052.09	7,560.85	269.11	0.26	209.70	25.09	20.62	
Mar 01	16,389.94	565.21	346	5,374.52	193.29	21,764.44	755.10	101.89	2,020.93	72.77	0.00	0.00	0.00	0.00	0.00	28,281.99	1,016.73	8,125.29	289.11	0.27	240.79	22.30	21.05	
Apr 01	16,385.88	565.21	353	5,267.91	206.93	21,653.79	755.10	101.89	2,194.39	73.15	0.00	0.00	0.00	0.00	0.00	27,905.99	930.20	7,918.56	289.11	0.28	219.32	22.93	21.68	
May 01	8,777.52	283.20	382	5,991.90	193.29	14,769.42	476.43	50.64	2,176.86	70.22	0.00	0.00	0.00	0.00	0.00	16,516.18	597.30	5,701.30	183.91	0.31	208.60	14.98	21.78	
Jun 01	20,992.74	633.09	384	5,573.66	185.79	26,566.30	812.38	0.00	2,315.43	77.18	0.00	0.00	0.00	0.00	0.00	28,881.73	896.06	7,934.15	264.47	0.30	190.56	22.31	21.84	
Jul 01	18,798.19	670.91	371	5,624.45	181.43	24,422.64	852.34	0.00	2,437.41	78.63	0.00	0.00	0.00	0.00	0.00	28,860.25	930.97	8,666.29	282.78	0.30	187.53	21.88	21.69	
Aug 01	20,775.34	670.17	385	5,621.69	181.34	26,397.03	851.52	0.00	2,601.88	80.71	0.00	0.00	0.00	0.00	0.00	28,898.91	932.22	8,426.93	271.84	0.29	197.70	21.82	21.82	
Sep 01	19,161.68	638.72	348	5,209.76	173.66	24,371.44	812.38	0.00	2,200.55	73.35	0.00	0.00	0.00	0.00	0.00	26,571.99	895.73	8,176.71	272.56	0.31	169.00	22.82	21.82	
Total 01	212,038.22		4,532	70,703.28		282,741.50			26,946.27		0.00	0.00	0.00	0.00	0.00	331,961.77		92,659.12			2,432.55	281.81		
Average01	17,669.85	581.76	378	5,891.94	193.85	23,561.79	775.61	61.29	2,245.52	73.80	0.00	0.00	0.00	0.00	0.00	27,665.15	910.71	7,721.59	264.15	0.28	202.71	21.82		
Oct 01	20,379.01	657.39	370	5,534.50	178.53	25,913.51	835.92	0.00	2,305.17	74.36	0.00	0.00	0.00	0.00	0.00	28,218.68	910.28	6,727.09	217.00	0.24	188.14	14.87	21.89	
Nov 01	18,791.62	626.39	366	5,662.29	188.74	24,453.91	815.13	0.00	2,205.50	73.82	0.00	0.00	0.00	0.00	0.00	26,659.41	868.65	7,414.02	247.13	0.28	197.67	22.10	21.57	
Dec 01	18,995.06	612.74	372	5,716.14	184.39	24,711.20	797.14	0.00	2,262.05	73.61	0.00	0.00	0.00	0.00	0.00	26,993.25	870.75	8,014.20	258.52	0.30	186.97	23.87	21.57	
Jan 02	21,146.97	682.16	416	6,597.23	212.81	27,744.20	894.97	0.00	2,593.67	77.22	0.00	0.00	0.00	0.00	0.00	30,137.87	972.19	8,124.15	262.07	0.27	235.98	21.87	21.37	
Feb 02	19,033.84	675.76	382	5,827.97	205.11	24,861.81	867.89	0.00	2,225.23	79.47	0.00	0.00	0.00	0.00	0.00	27,086.07	987.36	7,355.20	262.69	0.27	199.16	22.72	21.18	
Mar 02	12,388.13	689.94	424	6,647.97	214.45	28,016.10	904.39	0.00	2,487.14	80.23	0.00	0.00	0.00	0.00	0.00	30,523.24	984.62	7,455.75	240.51	0.24	214.94	21.88	21.44	
Apr 02	22,061.62	735.39	419	6,475.94	215.86	28,537.76	951.26	0.00	2,600.72	86.69	0.00	0.00	0.00	0.00	0.00	31,138.48	1,037.95	8,089.54	269.65	0.26	248.63	22.04	21.07	
May 02	17,538.90	565.77	383	5,691.56	183.60	23,230.46	748.37	0.00	2,522.53	81.37	0.00	0.00	0.00	0.00	0.00	25,752.99	830.74	7,265.80	234.38	0.28	207.91	19.31	21.43	
Jun 02	6,827.76	227.59	395	6,082.16	202.74	12,909.92	430.33	0.00	2,468.99	82.30	0.00	0.00	0.00	0.00	0.00	15,378.91	512.63	3,610.66	120.36	0.23	183.79	6.95	20.15	
Jul 02	21,292.03	686.84	426	6,891.30	215.85	27,983.33	902.69	0.00	2,608.19	84.14	0.00	0.00	0.00	0.00	0.00	30,591.52	986.82	8,632.40	278.46	0.28	196.93	21.76	20.14	
Aug 02	21,366.64	689.25	392	6,022.19	184.26	27,388.83	883.51	0.00	2,464.26	79.49	0.00	0.00	0.00	0.00	0.00	29,853.09	963.00	8,373.35	270.11	0.28	196.70	21.82	20.17	
Sep 02	20,926.76	675.06	374	5,845.75	188.57	26,772.51	863.63	0.00	2,277.03	73.45	0.00	0.00	0.00	0.00	0.00	28,049.54	937.08	8,687.89	280.25	0.30	193.45	23.21	20.20	
Total 02	229,748.54		4,699	72,794.03		302,542.57			28,840.48		0.00	0.00	0.00	0.00	0.00	331,383.05		89,750.06			2,450.27	242.38		
Average02	19,145.71	627.36	392	6,066.17	198.99	25,211.88	826.35	0.00	2,403.37	78.82	0.00	0.00	0.00	0.00	0.00	27,615.25	905.17	7,479.17	245.09	0.27	204.19	20.20		
Oct 02	20,783.03	670.42	418	6,563.13	211.71	27,346.16	882.13	0.00	2,512.95	81.06	0.00	0.00	0.00	0.00	0.00	29,859.11	963.20	7,165.25	231.14	0.24	210.48	14.85	20.18	
Nov 02	19,402.73	646.75	384	6,155.20	205.17	25,557.93	851.93	0.00	2,150.71	71.89	0.00	0.00	0.00	0.00	0.00	27,708.64	923.62	7,586.44	252.21	0.27	206.35	20.47	20.04	
Dec 02	21,642.76	698.15	395	6,785.42	218.88	28,428.18	917.04	0.00	2,675.91	86.32	0.00	0.00	0.00	0.00	0.00	31,104.09	1,003.36	8,505.26	274.36	0.27	198.68	23.87	20.04	
Jan 03	20,644.62	672.41	320	6,628.12	213.81	27,272.74	886.22	0.00	2,593.67	77.22	0.00	0.00	0.00	0.00	0.00	27,472.74	896.22	6,768.12	218.33	0.25	236.83	17.06	19.64	
Feb 03	20,124.34	678.73	307	6,451.19	230.40	26,575.53	949.13	0.00	0.00	0.00	0.00	0.00	0.00	0.00	0.00	26,575.53	949.13	7,287.98	259.57	0.27	211.58	21.43	19.54	
Mar 03	24,129.00	778.35	389	8,205.28	264.69	32,334.28	1,043.04	0.00	0.00	0.00	0.00	0.00	0.00	0.00	0.00	29,207.40	1,043.04	8,936.85	288.29	0.28	229.31	23.30	19.65	
Apr 03	22,272.56	742.42	335	6,934.84	231.16	29,207.40	973.58	0.00	0.00	0.00	0.00	0.00	0.00	0.00	0.00	29,207.40	973.58	8,212.96	273.77	0.28	232.25	22.51	19.69	
May 03	21,440.00	691.61	311	6,373.03	205.58	27,813.03	897.19	0.00	0.00	0.00	0.00	0.00	0.00	0.00	0.00	27,813.03	897.19	8,507.66	274.44	0.31	203.34	22.98	20.00	
Jun 03	21,341.82	711.39	292	6,111.42	203.71	27,453.24	897.19	0.00	0.00	0.00	0.00	0.00	0.00	0.00	0.00	27,453.24	897.19	8,796.12	293.20	0.32	176.59	22.72	21.31	
Jul 03	22,393.41	746.45	307	6,476.41	215.88	28,869.82	962.33	0.00	0.00	0.00	0.00	0.00	0.00	0.00	0.00	28,869.82	962.33	9,105.20	303.51	0.32	22.72	22.47	21.37	
Aug 03	20,996.35	699.88	288	6,052.84	201.76	27,049.19	901.64	0.00	0.00	0.00	0.00	0.00	0.00	0.00	0.00	27,049.19	901.64	6,455.99	215.20	0.24	180.28	15.43	20.84	
Sep 03	21,239.93	708.00	294	6,179.85	206.00	27,419.78	913.99	0.00	0.00	0.00	0.00	0.00	0.00	0.00	0.00	27,419.78	913.99	9,332.65	311.09	0.34	182.61	23.88	20.90	
Total 03	256,610.55		4,040	78,916.73		335,527.28			7,339.57		0.00	0.00	0.00	0.00	0.00	342,866.85		96,620.48			2,461.45	250.76		
Average03	21,384.21	707.05	337	6,576.39	217.40	27,960.61	924.44	0.00	6,111.63	19.92	0.00	0.00	0.00	0.00	0.00	28,572.24	944.37	8,051.71	286.26					

Pasco County Waste - to - Energy Tonnage Report

MONTH/ YEAR	WEST PASCO			EAST PASCO			TOTAL PASCO			HERNANDO		PLANT CITY		HILLSBOROUGH		SUMNER		CITRUS		PROCESSABLE WASTE		ASH		% ASH/ MSW	RECYCLING TOTAL TONS	MEGA WATTS	
	TONS	DAILY AVG	LOADS	LOADS	TONS	DAILY AVG	TOTAL PASCO	DAILY AVG	WASTE	AVG	DAILY AVG	WASTE	AVG	DAILY AVG	WASTE	AVG	DAILY AVG	WASTE	AVG	DAILY AVG	TOTAL TONS	DAILY AVG	TOTAL TONS			MONTHLY GEN.	12 MONTH ROLLING AVERAGE
Oct 97	15,513.19	500.43	319	5,216.93	168.29	20,730.12	668.71	3,119.90	100.64	1,936.72	62.47	0.00	0.00	0.00	0.00	0.00	0.00	0.00	0.00	831.83	5,223.16	168.49	235.81	14.49	20.28		
Nov 97	14,299.33	476.64	304	5,155.36	171.85	19,454.69	646.49	3,034.16	101.14	1,705.09	56.87	0.00	0.00	0.00	0.00	0.00	0.00	0.00	0.00	806.60	5,862.15	195.07	230.99	19.14	20.27		
Dec 97	13,766.74	444.15	361	5,930.27	191.30	19,699.01	635.45	3,165.62	102.86	2,275.36	73.34	0.00	0.00	0.00	0.00	0.00	0.00	0.00	0.00	825.31	5,362.75	172.98	276.83	15.14	19.49		
Jan 98	13,853.89	446.90	367	6,275.10	202.42	20,126.99	649.32	3,079.81	99.35	2,045.54	65.99	0.00	0.00	0.00	0.00	0.00	0.00	0.00	0.00	814.66	6,282.45	202.96	315.48	18.76	19.03		
Feb 98	16,077.24	475.26	395	6,359.52	205.95	21,875.21	781.25	3,194.20	114.08	1,930.89	68.96	0.00	0.00	0.00	0.00	0.00	0.00	0.00	0.00	964.29	5,366.49	191.73	254.59	18.70	18.42		
Mar 98	13,627.77	439.61	395	6,359.52	205.95	19,987.29	644.75	3,042.53	98.15	2,326.96	75.06	0.00	0.00	0.00	0.00	0.00	0.00	0.00	0.00	871.96	5,821.09	194.04	297.38	16.66	18.42		
Apr 98	11,339.37	377.98	341	5,784.79	182.83	17,120.24	560.01	3,094.58	103.84	1,893.42	64.17	0.00	0.00	0.00	0.00	0.00	0.00	0.00	0.00	738.13	6,529.26	210.62	300.49	17.16	18.15		
May 98	13,124.30	423.36	373	4,855.94	156.64	17,985.64	560.01	3,094.58	103.84	1,893.42	64.17	0.00	0.00	0.00	0.00	0.00	0.00	0.00	0.00	737.61	6,529.26	210.62	247.54	20.18	18.04		
Jun 98	11,583.05	371.94	301	4,656.96	155.23	26,240.01	874.67	3,052.19	101.84	2,066.57	67.31	0.00	0.00	0.00	0.00	0.00	0.00	0.00	0.00	930.80	8,506.45	286.01	239.95	22.71	18.47		
Jul 98	18,401.73	593.60	326	5,104.27	164.65	23,506.00	755.26	3,262.17	105.23	2,086.57	67.31	0.00	0.00	0.00	0.00	0.00	0.00	0.00	0.00	930.80	7,860.85	242.16	234.88	19.68	18.33		
Aug 98	19,112.60	616.54	290	4,594.11	148.20	23,706.71	764.73	3,104.06	100.13	1,945.60	62.89	0.00	0.00	0.00	0.00	0.00	0.00	0.00	0.00	927.75	8,059.42	259.98	207.90	20.56	18.39		
Sep 98	23,347.27	778.24	307	4,900.80	163.36	28,248.07	941.60	3,131.08	104.37	2,050.15	68.34	0.00	0.00	0.00	0.00	0.00	0.00	0.00	0.00	1,114.31	7,765.87	258.86	210.17	18.96	18.34		
Total 98 Average98	194,078.48	532.68	3,937	64,601.82	177.16	256,680.30	709.84	37,308.46	24,176.60	2,014.72	66.24	0.00	0.00	0.00	0.00	0.00	0.00	0.00	0.00	879.53	77,923.43	213.53	3,054.01	220.02	18.34		
Oct 98	14,667.38	473.14	317	5,107.30	164.75	19,774.68	637.89	2,828.82	94.51	1,988.08	64.13	0.00	0.00	0.00	0.00	0.00	0.00	0.00	0.00	796.53	6,323.34	203.98	219.57	17.11	18.55		
Nov 98	14,754.34	491.81	312	5,098.87	169.96	19,853.21	661.77	2,829.13	97.64	1,948.52	64.98	0.00	0.00	0.00	0.00	0.00	0.00	0.00	0.00	824.40	7,269.20	242.31	204.33	17.52	18.75		
Dec 98	12,597.22	696.68	367	5,761.07	185.84	27,355.29	882.53	3,146.87	101.58	2,066.04	67.38	0.00	0.00	0.00	0.00	0.00	0.00	0.00	0.00	1,061.46	6,356.39	269.56	240.60	23.85	19.46		
Jan 99	17,213.04	555.26	351	5,723.07	184.62	22,936.11	739.87	3,111.49	100.37	1,978.48	63.73	0.00	0.00	0.00	0.00	0.00	0.00	0.00	0.00	903.97	7,548.65	243.50	251.26	22.75	19.61		
Feb 99	15,919.94	568.57	333	5,460.20	195.01	21,380.14	763.58	2,899.13	106.04	1,975.48	66.13	0.00	0.00	0.00	0.00	0.00	0.00	0.00	0.00	893.74	6,737.37	240.62	221.26	22.75	20.23		
Mar 99	12,498.81	403.19	416	6,696.45	216.01	19,195.26	619.20	3,151.08	101.65	2,419.25	78.04	0.00	0.00	0.00	0.00	0.00	0.00	0.00	0.00	788.89	7,002.06	225.87	260.11	19.30	20.53		
Apr 99	12,625.31	420.84	377	6,176.59	205.89	18,801.90	626.73	3,106.92	103.56	2,042.14	68.07	0.00	0.00	0.00	0.00	0.00	0.00	0.00	0.00	796.37	7,002.06	225.87	248.91	16.06	20.44		
May 99	12,938.85	417.38	354	5,686.16	183.42	18,625.01	600.81	2,863.97	95.61	2,084.93	67.26	0.00	0.00	0.00	0.00	0.00	0.00	0.00	0.00	763.67	7,435.24	239.85	203.95	22.21	20.61		
Jun 99	17,857.04	595.23	359	5,885.79	196.19	23,742.83	791.43	3,137.76	104.59	2,251.67	75.06	0.00	0.00	0.00	0.00	0.00	0.00	0.00	0.00	902.32	8,449.44	272.56	218.98	20.74	20.45		
Jul 99	17,240.03	556.13	339	5,395.02	174.03	22,635.05	730.16	3,146.72	101.57	2,188.11	70.58	0.00	0.00	0.00	0.00	0.00	0.00	0.00	0.00	890.32	8,449.44	272.56	209.04	21.75	20.63		
Aug 99	16,893.97	544.97	340	5,375.33	173.40	22,269.30	718.36	3,100.81	100.03	2,209.71	71.28	0.00	0.00	0.00	0.00	0.00	0.00	0.00	0.00	889.67	7,690.56	248.08	186.89	19.29	20.52		
Sep 99	16,875.70	562.52	320	5,075.23	169.17	21,950.93	731.70	2,982.89	99.43	2,007.74	66.92	0.00	0.00	0.00	0.00	0.00	0.00	0.00	0.00	898.05	7,057.90	235.26	187.61	18.57	20.49		
Total 99 Average99	191,081.63	523.81	4,189	67,441.08	184.86	256,522.71	708.67	36,680.59	25,056.25	2,068.02	68.63	0.00	0.00	0.00	0.00	0.00	0.00	0.00	0.00	877.85	86,782.89	237.67	2,652.51	245.90	20.49		
Oct 99	16,738.73	539.96	314	5,112.79	164.93	21,851.52	704.89	2,859.87	92.25	1,943.69	62.70	0.00	0.00	0.00	0.00	0.00	0.00	0.00	0.00	869.84	6,832.63	220.41	207.51	19.73	20.71		
Nov 99	17,242.98	574.77	357	5,964.02	195.47	23,107.00	770.23	3,037.05	101.24	2,172.97	72.43	0.00	0.00	0.00	0.00	0.00	0.00	0.00	0.00	943.90	6,832.63	220.41	214.00	17.47	20.37		
Dec 99	16,957.57	547.02	385	5,315.04	171.45	22,272.61	718.47	3,098.67	98.02	2,169.89	70.00	0.00	0.00	0.00	0.00	0.00	0.00	0.00	0.00	901.73	7,544.87	243.36	226.58	22.80	20.29		
Jan 00	12,242.34	394.91	398	5,282.85	170.41	17,524.99	565.32	3,095.89	99.87	2,153.40	69.46	0.00	0.00	0.00	0.00	0.00	0.00	0.00	0.00	734.65	5,899.26	189.98	232.19	17.09	19.81		
Feb 00	16,712.88	576.31	369	5,689.54	196.19	22,402.42	772.50	3,040.37	104.84	2,199.44	75.84	0.00	0.00	0.00	0.00	0.00	0.00	0.00	0.00	953.48	6,731.59	232.12	234.52	19.85	19.57		
Mar 00	11,229.95	362.26	437	7,051.21	227.46	18,281.16	589.71	3,051.84	98.45	2,612.41	84.27	0.00	0.00	0.00	0.00	0.00	0.00	0.00	0.00	772.43	6,118.54	197.37	224.02	17.18	19.40		
Apr 00	7,270.13	242.34	360	5,817.43	183.91	13,087.58	436.25	3,113.98	103.80	2,154.97	71.83	0.00	0.00	0.00	0.00	0.00	0.00	0.00	0.00	611.88	5,211.05	173.70	234.57	14.17	19.24		
May 00	9,788.71	315.76	355	5,511.32	177.78	15,300.03	493.55	3,108.73	100.28	2,305.37	74.37	0.00	0.00	0.00	0.00	0.00	0.00	0.00	0.00	686.20	6,240.40	201.30	212.88	16.22	18.71		
Jun 00	15,809.18	526.97	356	5,510.25	183.68	21,319.43	710.65	3,044.94	101.50	2,392.46	79.75	0.00	0.00	0.00	0.00	0.00	0.00	0.00	0.00	891.94	7,323.91	244.13	201.77	20.35	18.71		
Jul 00	18,885.92	609.22	337	5,295.40	170.82	24,181.22	780.04	3,034.37	97.88	2,214.45	71.43	0.00	0.00	0.00	0.00	0.00	0.00	0.00	0.00	949.36	9,161.76	295.64	177.34	23.74	18.87		
Aug 00	19,200.72	619.38	357	5,619.19	181.26	24,819.91	800.64	3,089.27	99.65	2,369.22	76.43	0.00	0.00	0.00	0.00	0.00	0.00	0.00	0.00	976.72	7,895.82	254.70	192.78	19.83	18.92		
Sep 00	17,725.67	590.86	320	5,115.02	170.50	22,840.69	761.36	3,052.37	101.75	2,103.21	70.31	0.00	0.00	0.00	0.00	0.00	0.00	0.00	0.00	933.41	8,350.79	278.36	177.28	22.88	20.62		
Total 00 Average00	179,804.68	491.65	4,345	67,183.86	183.66	246,988.54	675.30	36,667.35	26,797.48	2,233.12	73.24	0.00	0.00	0.00	0.00	0.00	0.00	0.00	0.00	849.80	83,994.18	229.51	2,503.20	231.31	19.28		

Pasco County Waste - to - Energy Tonnage Report

MONTH/ YEAR	WEST PASCO			EAST PASCO			TOTAL PASCO			HERNANDI			PLANT CITY			HILLSBOROUGH			SUMNER		CITRUS		PROCESSABLE WASTE			ASH		% ASH/ MSW	RECYCLING TOTAL TONS	MEGA WATTS MONTHLY GEN.	
	TONS	DAILY AVG	LOADS	TONS	DAILY AVG	LOADS	TOTAL PASCO	DAILY AVG	WASTE	DAILY AVG	WASTE	DAILY AVG	WASTE	DAILY AVG	WASTE	DAILY AVG	WASTE	WASTE	WASTE	WASTE	WASTE	DAILY AVG	WASTE	DAILY AVG	TOTAL TONS	DAily AVG	MONTHLY			12-MONTH ROLLING AVERAGE	
Oct 94	14,407.73	464.77	351	4,671.27	150.89	19,079.00	615.45	3,982.91	128.48	1,890.34	60.98	86.64	3.18	0.00	0.00	0.00	0.00	0.00	0.00	0.00	25,050.89	808.09	5,579.46	179.88	288.76	18.86	20.36				
Nov 94	15,177.29	505.91	372	4,197.78	139.93	19,375.07	645.84	4,263.10	142.10	1,982.63	65.42	708.69	23.62	0.00	0.00	0.00	0.00	0.00	0.00	0.00	26,039.49	876.96	5,466.86	182.90	291.16	16.18	20.37				
Dec 94	14,446.17	466.01	343	4,139.39	133.53	18,585.56	599.53	4,313.13	139.13	1,992.92	64.29	0.00	0.00	0.00	0.00	0.00	0.00	0.00	0.00	0.00	25,146.77	811.19	5,728.08	184.78	327.20	17.68	19.86				
Jan 95	15,532.24	501.04	383	5,158.95	166.42	20,691.19	687.46	4,199.45	135.47	1,985.48	64.05	0.00	0.00	0.00	0.00	0.00	0.00	0.00	0.00	0.00	27,486.31	886.66	6,217.08	200.55	373.24	22.07	20.06				
Feb 95	13,835.23	491.42	352	4,772.94	170.46	18,608.17	634.58	4,189.76	147.13	1,832.32	65.93	0.00	0.00	0.00	0.00	0.00	0.00	0.00	0.00	0.00	24,709.94	862.60	5,672.81	202.60	367.29	21.93	19.79				
Mar 95	15,622.50	510.40	449	6,424.61	207.25	22,047.11	717.65	4,478.00	144.45	2,384.91	76.94	0.00	0.00	0.00	0.00	0.00	0.00	0.00	0.00	0.00	29,288.49	1,011.28	6,817.52	243.48	450.38	20.92	19.77				
Apr 95	13,789.48	459.65	348	5,157.32	171.91	18,946.80	631.56	4,120.89	137.36	1,826.70	60.89	0.00	0.00	0.00	0.00	0.00	0.00	0.00	0.00	0.00	25,066.32	835.54	5,928.42	197.61	302.73	19.38	19.76				
May 95	16,618.54	503.82	388	5,002.31	166.91	20,620.73	665.18	4,389.81	141.61	2,193.90	70.77	0.00	0.00	0.00	0.00	0.00	0.00	0.00	0.00	0.00	27,327.90	881.55	6,208.70	264.80	330.18	24.40	19.72				
Jun 95	19,424.08	607.47	381	5,111.87	170.40	24,535.93	871.86	4,293.56	143.12	1,485.55	61.62	0.00	0.00	0.00	0.00	0.00	0.00	0.00	0.00	0.00	31,117.05	1,037.24	7,353.06	340.50	295.74	22.19	19.71				
Jul 95	19,479.32	628.37	318	4,535.67	146.31	24,014.99	874.68	3,934.16	126.91	1,887.64	60.89	0.00	0.00	0.00	0.00	0.00	0.00	0.00	0.00	0.00	29,925.37	965.33	7,734.42	249.50	261.31	22.60	20.01				
Aug 95	15,858.49	511.56	330	5,149.31	166.11	21,007.80	677.67	4,484.02	144.97	2,020.03	65.16	0.00	0.00	0.00	0.00	0.00	0.00	0.00	0.00	0.00	27,521.85	887.80	6,870.29	221.62	254.67	21.08	20.20				
Sep 95	14,737.82	491.26	289	4,811.45	153.72	19,349.27	644.98	4,095.58	136.52	1,850.68	61.69	0.00	0.00	0.00	0.00	0.00	0.00	0.00	0.00	0.00	25,295.53	843.18	6,634.04	221.13	247.85	20.31	20.63				
Total 95	186,128.87	5682.42	4,304	58,932.75	1951.41	247,068.12	8177.58	50,684.37	1531.11	23,976.10	807.33	807.33	2.23	0.00	0.00	0.00	0.00	0.00	0.00	0.00	324,245.91	888.40	77,962.22	3143.49	3,692.38	247.60					
Average 95	15,077.41	515.36	359	4,911.06	161.51	20,568.47	676.87	4,223.70	138.94	1,996.01	65.68	67.26	2.23	0.00	0.00	0.00	0.00	0.00	0.00	0.00	27,020.49	888.40	6,496.85	213.49	307.70	20.63					
Oct 95	16,079.27	518.69	320	5,034.19	162.39	21,113.46	681.08	3,229.60	104.18	1,959.09	65.20	0.00	0.00	0.00	0.00	0.00	0.00	0.00	0.00	0.00	26,302.15	848.46	5,541.49	178.76	276.19	18.13	20.57				
Nov 95	14,526.70	484.22	299	4,820.69	160.69	19,347.39	644.91	2,829.74	94.32	1,816.22	60.54	0.00	0.00	0.00	0.00	0.00	0.00	0.00	0.00	0.00	23,993.35	799.78	5,378.12	179.27	293.26	17.54	20.52				
Dec 95	13,595.36	438.59	303	4,804.90	155.00	18,401.26	583.59	3,210.21	103.56	1,756.42	56.66	0.00	0.00	0.00	0.00	0.00	0.00	0.00	0.00	0.00	23,367.89	753.80	6,041.48	194.89	283.84	20.89	20.79				
Jan 96	15,662.19	511.68	371	5,813.67	188.83	21,675.86	700.51	3,431.25	110.69	2,106.00	67.94	0.00	0.00	0.00	0.00	0.00	0.00	0.00	0.00	0.00	27,213.11	878.13	5,919.14	190.94	350.14	18.89	20.52				
Feb 96	14,971.99	482.97	331	5,176.54	168.73	20,148.53	651.69	3,047.05	98.29	1,918.30	61.88	0.00	0.00	0.00	0.00	0.00	0.00	0.00	0.00	0.00	25,113.88	811.87	6,198.76	199.96	314.45	20.50	20.40				
Mar 96	15,745.96	507.97	388	6,012.91	195.95	21,759.87	703.32	3,300.10	106.45	2,267.71	73.15	0.00	0.00	0.00	0.00	0.00	0.00	0.00	0.00	0.00	27,327.68	882.83	5,538.52	178.66	313.39	17.81	20.14				
Apr 96	9,594.15	319.05	368	5,940.16	198.77	15,534.31	517.81	3,450.23	115.01	2,194.25	73.15	0.00	0.00	0.00	0.00	0.00	0.00	0.00	0.00	0.00	21,187.17	705.86	6,254.83	208.49	313.02	16.92	19.94				
May 96	15,652.22	504.91	328	5,282.66	170.41	20,934.88	675.32	3,328.94	107.39	2,033.24	65.59	0.00	0.00	0.00	0.00	0.00	0.00	0.00	0.00	0.00	27,162.62	848.29	7,042.87	227.18	313.00	21.83	19.72				
Jun 96	13,282.79	442.76	294	4,701.98	156.73	17,984.77	598.49	2,626.43	87.55	1,963.87	65.46	0.00	0.00	0.00	0.00	0.00	0.00	0.00	0.00	0.00	22,575.07	752.50	6,302.25	210.08	247.86	17.50	19.33				
Jul 96	17,962.39	579.43	315	5,103.98	164.64	23,066.37	744.08	2,833.37	91.40	2,014.94	65.00	0.00	0.00	0.00	0.00	0.00	0.00	0.00	0.00	0.00	27,914.68	900.47	6,652.38	246.65	258.72	20.33	19.14				
Aug 96	15,465.23	488.86	294	4,767.27	153.78	20,235.50	652.76	2,162.20	69.75	1,880.41	60.66	0.00	0.00	0.00	0.00	0.00	0.00	0.00	0.00	0.00	24,278.11	763.16	5,805.77	187.28	243.24	15.72	18.70				
Sep 96	12,524.52	430.82	275	4,411.09	147.04	17,335.81	577.85	3,081.97	102.07	1,820.53	60.68	0.00	0.00	0.00	0.00	0.00	0.00	0.00	0.00	0.00	22,218.11	740.60	4,763.68	158.79	231.86	17.30	18.45				
Total 96	175,867.77	476.67	3,886	61,870.04	188.53	237,537.81	7375.81	36,511.09	99.22	23,730.98	64.49	0.00	0.00	0.00	0.00	0.00	0.00	0.00	0.00	0.00	298,653.82	808.91	72,438.99	196.76	3,436.97	221.36					
Average 96	14,638.98	476.67	324	5,155.84	168.53	19,794.82	645.20	3,042.59	99.22	1,907.58	64.49	0.00	0.00	0.00	0.00	0.00	0.00	0.00	0.00	0.00	24,087.82	808.91	6,036.58	196.76	286.41	18.45					
Oct 96	8,347.99	269.29	313	5,152.42	166.21	13,500.41	435.50	3,413.86	110.12	1,908.43	61.56	0.00	0.00	0.00	0.00	0.00	0.00	0.00	0.00	0.00	18,822.70	607.18	3,416.82	110.22	282.32	9.22	17.87				
Nov 96	14,255.41	475.11	291	4,810.80	160.36	19,064.21	635.47	3,058.57	101.95	1,705.99	65.87	0.00	0.00	0.00	0.00	0.00	0.00	0.00	0.00	0.00	23,828.77	794.29	5,969.59	198.99	238.55	18.20	16.01				
Dec 96	14,937.82	481.87	331	5,391.65	173.92	20,329.47	685.79	3,189.32	103.20	2,043.84	65.93	0.00	0.00	0.00	0.00	0.00	0.00	0.00	0.00	0.00	25,672.63	824.92	7,633.12	246.23	253.60	24.50	18.31				
Jan 97	18,161.10	585.84	340	5,672.94	183.00	23,834.04	768.84	2,988.49	96.40	1,973.31	63.66	0.00	0.00	0.00	0.00	0.00	0.00	0.00	0.00	0.00	28,795.84	928.90	7,908.32	255.11	304.05	24.07	18.74				
Feb 97	17,896.49	639.16	330	5,553.84	198.35	23,450.33	837.51	3,018.93	107.82	1,846.97	65.96	0.00	0.00	0.00	0.00	0.00	0.00	0.00	0.00	0.00	28,316.23	1,011.28	6,817.52	243.48	272.77	21.95	18.86				
Mar 97	16,796.43	541.88	388	6,375.02	205.65	23,173.45	747.53	3,073.09	99.13	2,355.20	75.97	0.00	0.00	0.00	0.00	0.00	0.00	0.00	0.00	0.00	28,801.74	922.64	6,661.59	214.69	292.17	18.99	18.96				
Apr 97	16,015.13	533.84	357	5,977.89	199.26	21,993.02	733.10	2,994.22	99.81	1,984.78	66.16	0.00	0.00	0.00	0.00	0.00	0.00	0.00	0.00	0.00	26,972.02	899.07	6,553.14	218.44	312.30	20.33	19.25				
May 97	17,855.62	575.99	333	5,425.18	175.01	23,280.80	751.10	3,027.34	97.66	2,044.91	65.96	0.00																			



## ATTACHMENT 6

### Interstice Volume and Consumption Estimate



PROJECT NUMBER: 16002-009-01  
 PROJECT NAME: West Pasco County Landfill Ash Monofill Operations Modification  
 SUBJECT: Attachment E.4.c - Projected Facility Life  
 BY: C.SPREADBURY DATE: 3/15/2021  
 CHECKED BY: T.LEBLANC DATE: 6/8/2021

**Objective:** To determine the remaining life from present day of the Class I Ash Monofill Cells (A-1 through A-4) at West Pasco County Landfill  
 A. Calculate the average waste generation growth rate  
 B. Calculate the expected lifespan

**Data:**

Starting Annual Waste Disposal Rate of MSW to WIE (FY2021): 331,000 Tons MSW (Reference 2)  
 MSW-to-Ash Conversion: 0.23 Ton Ash/Ton MSW (Reference 2)  
 Starting Annual Waste Disposal Rate of Ash (FY2021): 76,130 Tons Ash  
 Remaining Volume with Slope Modification and Vertical Expansion (as of 1/1/2021):  $V_{mod} = 1,790,000$  CY (Reference 3)  
 Estimated lifespan with expansion volume (assuming constant WTE rate): 25.9 Years (starting from 1/1/2021)  
 Estimated lifespan with expansion volume (assume 520,000 TDY increase after 2027): 18.7 Years (starting from 1/1/2021)

**Assumptions:**

1. Waste-to-energy (WIE) Facility operates at capacity resulting in 331,000 tons of waste processed per year (Reference 2)
2. Waste (ash) apparent density is 2,200 lb/CY (Reference 2)
3. Future waste generation rates are represented by the average waste generation growth rate from the last five years
4. Facility expansion is anticipated to be complete starting the 2027 Calendar Year which will increase ash generation rate. (Reference 2)

**Waste density:**

$$\rho_s = \frac{\text{Class I Materials Received (tons)}}{\text{Volume Consumed (CY)}} \times (2000 \frac{\text{lbs}}{\text{ton}}) = \frac{2,200 \text{ lb/CY}}{1.10 \text{ tons/CY}}$$

**A. Projected Waste Generation Growth Rate**

**Waste Generation Growth Rates**

Fiscal Year <sup>(1)</sup>	Waste Generation <sup>(2)</sup> (tons)	Waste Generation Growth Rate
2015	338,197	
2016	354,273	4.75%
2017	364,947	3.01%
2018	378,733	3.78%
2019	386,807	2.13%
Average Growth Rate		3.42%

Notes:

- (1) Fiscal year, October 1 to September 30; however, remaining life is measured from January 1, 2021
- (2) Waste generation data based off of Interoffice Memorandum (Reference 1)

**B. Lifespan Calculations**

**Lifespan Calculations**

Fiscal Year <sup>(1)</sup>	Average Waste Generation Growth Rate (%/yr)	Total Class I Waste Generated (tons/yr)	Total Class I Waste Processed by WIE <sup>(3)</sup> (tons/yr)	Total Ash Generated by WIE Facility (tons/yr)	Total Ash Disposed of in Ash Monofill <sup>(5)</sup> (tons/yr)	Volume Consumed, Ash Monofill (CY/yr)	Remaining Volume, Ash Monofill <sup>(6)</sup> (CY)
2019 <sup>(2)</sup>	3.42%	386,807	331,000	76,130	76,130	69,209	
2020	3.42%	400,032	331,000	76,130	76,130	69,209	1,790,000
2021	3.42%	413,709	331,000	76,130	76,130	69,209	1,720,791
2022	3.42%	427,853	331,000	76,130	76,130	69,209	1,651,582
2023	3.42%	442,481	331,000	76,130	76,130	69,209	1,582,373
2024	3.42%	457,610	331,000	76,130	76,130	69,209	1,513,164
2025	3.42%	473,255	331,000	76,130	76,130	69,209	1,443,955
2026	3.42%	489,436	331,000	76,130	76,130	69,209	1,374,745
2027 <sup>(4)</sup>	3.42%	506,169	506,169	116,419	116,419	105,835	1,268,910
2028	3.42%	523,475	520,000	119,600	119,600	108,727	1,160,183
2029	3.42%	541,373	520,000	119,600	119,600	108,727	1,051,455
2030	3.42%	559,882	520,000	119,600	119,600	108,727	942,728
2031	3.42%	579,024	520,000	119,600	119,600	108,727	834,001
2032	3.42%	598,821	520,000	119,600	119,600	108,727	725,274
2033	3.42%	619,294	520,000	119,600	119,600	108,727	616,546
2034	3.42%	640,468	520,000	119,600	119,600	108,727	507,819
2035	3.42%	662,365	520,000	119,600	119,600	108,727	399,092
2036	3.42%	685,011	520,000	119,600	119,600	108,727	290,365
2037	3.42%	708,431	520,000	119,600	119,600	108,727	181,637
2038	3.42%	732,652	520,000	119,600	119,600	108,727	72,910
2039	3.42%	757,701	520,000	119,600	119,600	108,727	-35,817
<b>Remaining Life Starting from January 1, 2021</b>							<b>18.7</b>
<b>Anticipated Closure (Rounded to the nearest month)</b>							<b>August-2039</b>

Notes:

- (1) Fiscal year, October 1 to September 30; however, remaining life is measured from January 1, 2021.
- (2) Values from 2019 are actual values as reported by Interoffice Memorandum (Reference 1).
- (3) Assumes that Waste-to-energy Facility operates at capacity resulting in 331,000 tons of waste processed per year, until capacity increase in 2027 (Reference 2).
- (4) Proposed start date of WIE capacity increase (520,000 TPY anticipated maximum capacity) (Reference 2, Table 1).
- (5) Assumes all ash generated from WIE is landfilled at ash monofill (i.e., no significant beneficial reuse activities).
- (6) Calculated as remaining volume as of December 31 of that year.

References:

1. Interoffice Memorandum from Tim Treshler to Michael Carballe, January 24, 2020
2. Remaining Disposal Capacity and Site Life Calculations, JMG Engineering, Inc., February 2021
3. Additional Capacity from Modifications Calculation, Jones Edmunds Associates



PROJECT NUMBER: 16002-009-01  
PROJECT NAME: West Pasco County Landfill (Ash Monofill)  
SUBJECT: Additional Volume from Modifications

**Volumes**

Index	Base Surface	Comparison Surface	Cut	Fill	Net
3	EG-DTM-CEN	PG-COVR-101	18478.54 Cu. Yd.	1246256.19 Cu. Yd.	1227777.65 Cu. Yd.<Fill>
4	PG-COVR-101	PG-COVR-INT	2656.83 Cu. Yd.	554284.84 Cu. Yd.	551628.02 Cu. Yd.<Fill>

Airspace Capacity Estimate	
1246257 CY	- Airspace Gained From Current to Cells A-1/2/3 to EL. 101, Cell A-4 to EL. 122.
554285 CY	- Airspace Gained from EL. 101 Cells A-1/2/3 to EL. 122.
1790000 CY	- Conservative Estimate.