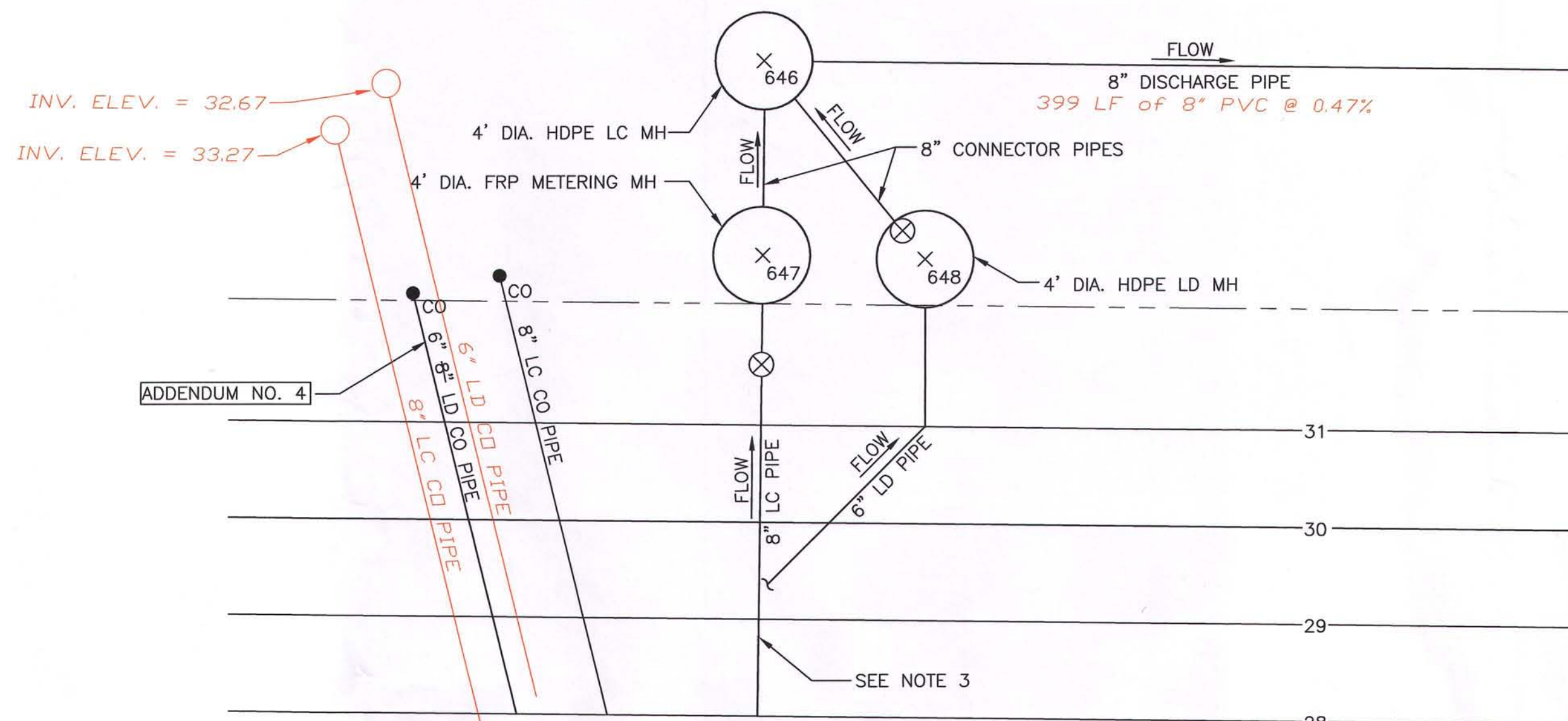


CELL 3 PIPING PLAN VIEW DETAIL  
1"=5' 3  
C-02



CELL 4 PIPING PLAN VIEW DETAIL  
1"=5' 4  
C-02

TABLE OF LEACHATE PIPING DESIGN ELEVATIONS (FT NGVD)  
(ALL ELEVATIONS REFER TO PIPE INVERT)

CELL 3	
8" LC PIPE @ S. END OF CELL FLOOR	-32.98-33.28
6" LD PIPE @ S. END OF CELL FLOOR	-31.98-32.01
8" LC PIPE @ PIPE PENETRATION	-22.00-21.94
6" LD PIPE @ PIPE PENETRATION	-21.00-20.96
8" LC PIPE INTO METERING MH	-21.82-21.53
8" CONNECTOR PIPE FROM METERING MH	-21.78-21.48
8" CONNECTOR PIPE INTO LC MH FROM METERING MH	-21.74-21.45
6" LD PIPE INTO LD MH	-20.80-20.65
8" CONNECTOR PIPE FROM LD MH	-15.80-15.90
8" CONNECTOR PIPE INTO LC MH FROM LD MH	-15.40-15.61
8" LEACHATE DISCHARGE PIPE FROM CELL 4 INTO LC MH	-13.30-13.57
10" LEACHATE DISCHARGE PIPE FROM LC MH	13.20-13.42
CELL 4	
8" LC PIPE @ S. END OF CELL FLOOR	-32.98-33.25
6" LD PIPE @ S. END OF CELL FLOOR	-31.98-31.84
8" LC PIPE @ PIPE PENETRATION	-22.00-21.91
6" LD PIPE @ PIPE PENETRATION	-21.00-20.90
8" LC PIPE INTO METERING MH	-21.82-21.76
8" CONNECTOR PIPE FROM METERING MH	-21.78-21.73
8" CONNECTOR PIPE INTO LC MH FROM METERING MH	-21.74-21.68
6" LD PIPE INTO LD MH	-20.80-20.69
8" CONNECTOR PIPE FROM LD MH	-15.80-15.93
8" CONNECTOR PIPE INTO LC MH FROM LD MH	-15.40-15.48
8" LEACHATE DISCHARGE PIPE FROM LC MH	-15.30-15.43

LEGEND

- FRP = FIBERGLASS REINFORCED PLASTIC
- LC = LEACHATE COLLECTION
- LD = LEAK DETECTION
- MH = MANHOLE
- PS = PUMP STATION
- CO = CLEANOUT
- LIMITS OF PROPOSED LINER
- PROPOSED DRAIN OR FORCEMAIN
- ⊗ GATE VALVE WITH EXTENSION
- ⊗<sub>401</sub> CONTROL POINT

NOTES:

1. SEE SHEETS C-14 THROUGH C-19 FOR ADDITIONAL PIPING DETAILS IN THESE AREAS.
2. ALL PIPE SHALL BE SDR 11 HDPE PIPE EXCEPT STUBOUTS FOR 4' DIA FRP METERING MH WHICH SHALL BE SCH 40 PVC.
3. LEAK DETECTION PIPE CONTINUES BENEATH LEACHATE COLLECTION PIPE TO SUMP.
4. GRADES SHOWN ARE PRIOR TO THE PLACEMENT OF 2' OF PROTECTIVE COVER.
5. SEE SHEET C-06 FOR CONTROL POINT TABLES.

CONFORMED TO  
ADDENDA

**AS-BUILT SURVEY**  
**Hyatt Survey Services, Inc.**  
11007 8TH AVENUE EAST BRADENTON, FLORIDA 34212  
PH: (941) 748-4693 FAX: (941) 744-1643 LB No.: 7203  
CADD FILE: 06C-03.dwg PROJ MAN: CSM DRAWN BY: CSM CHECKED BY: RPH  
PROJ: 09-1450 FB 000, POS 000 FIELD DATE: 05/17/09 SCALE: 1"=50'

THIS SURVEY IS A TRUE AND CORRECT COPY OF THE ORIGINAL RAISED SEALED COPY OF THE SURVEYOR AND MAPPER.  
**RUSSELL P. HYATT, P.S.M.**  
FLORIDA SURVEYORS REGISTRATION NO. 5303

**HDR**  
HDR Engineering, Inc.  
5426 Bay Center Drive, Suite 400  
Tampa, FL 33609-3444  
(813) 252-2300  
Florida Certificate of Authorization  
No. 00004213

ISSUE	DATE	DESCRIPTION
A	02/2009	ISSUED FOR CONSTRUCTION, CONFORMED TO ADDENDA

PROJECT MANAGER	T.M. YANOSCHAK
REVIEWED BY	J.C. READING
DRAWN BY	G.J. BLUE
PROJECT NUMBER	001916-43485-018

Thomas M. Yanoschak, P.E.  
Certificate No. 44200

**SARASOTA COUNTY**  
**Central County Solid Waste Disposal Complex**  
**PHASE II CLASS I LANDFILL EXPANSION**  
**CONSTRUCTION DRAWINGS**  
FLORIDA

**PIPING PLAN VIEW DETAIL**  
**CELLS 3 AND 4**  
**(BID ALTERNATE 1)**  
**ADDENDUM NO. 4**

FLORIDA DEPARTMENT OF ENVIRONMENTAL PROTECTION  
FEB 12 2010  
SOUTHWEST DISTRICT  
TAMPA

0 1" 2"  
FILENAME: 00C-03A.dwg SHEET: **C-03A**  
SCALE: 1"=5'