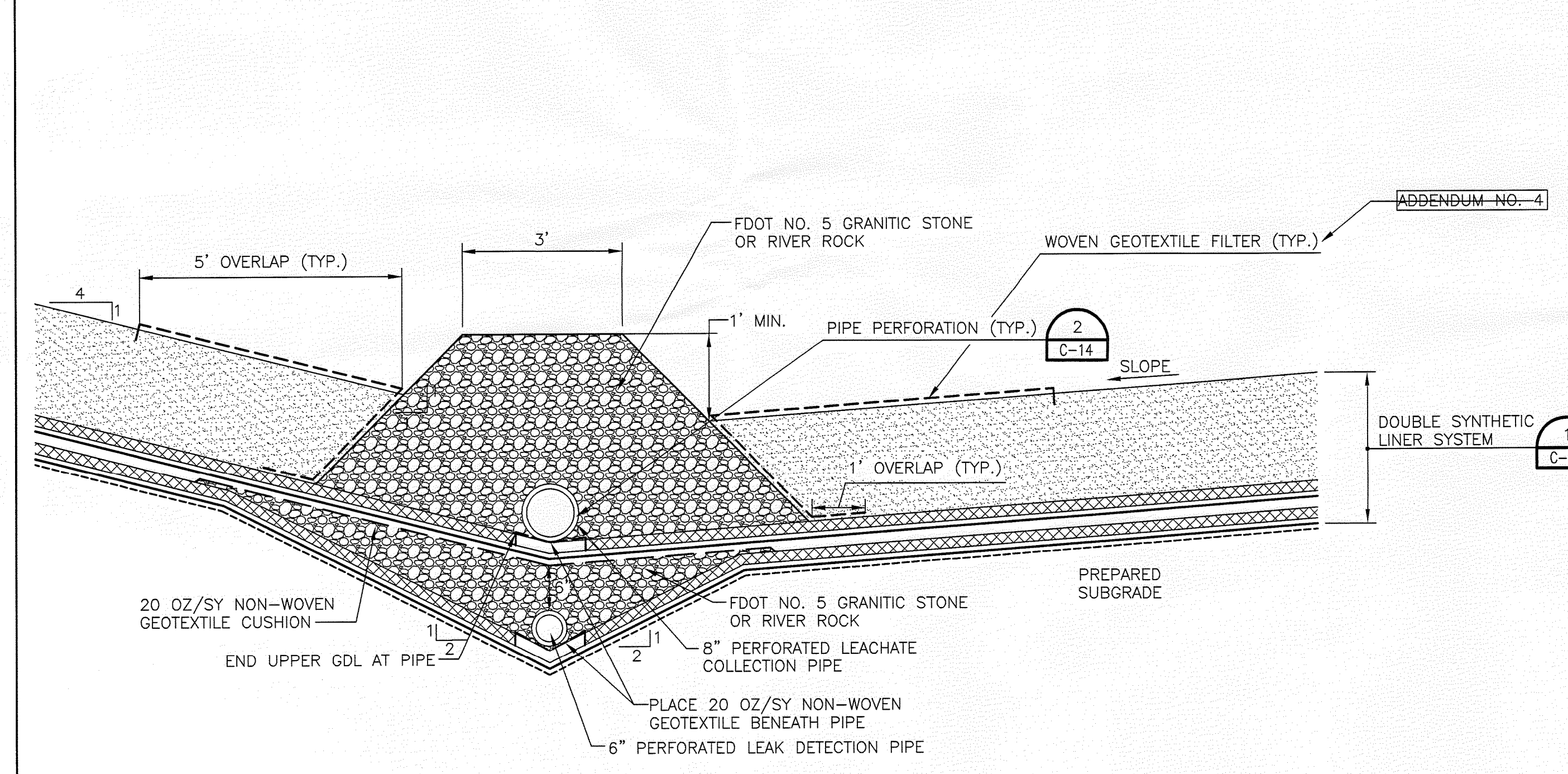


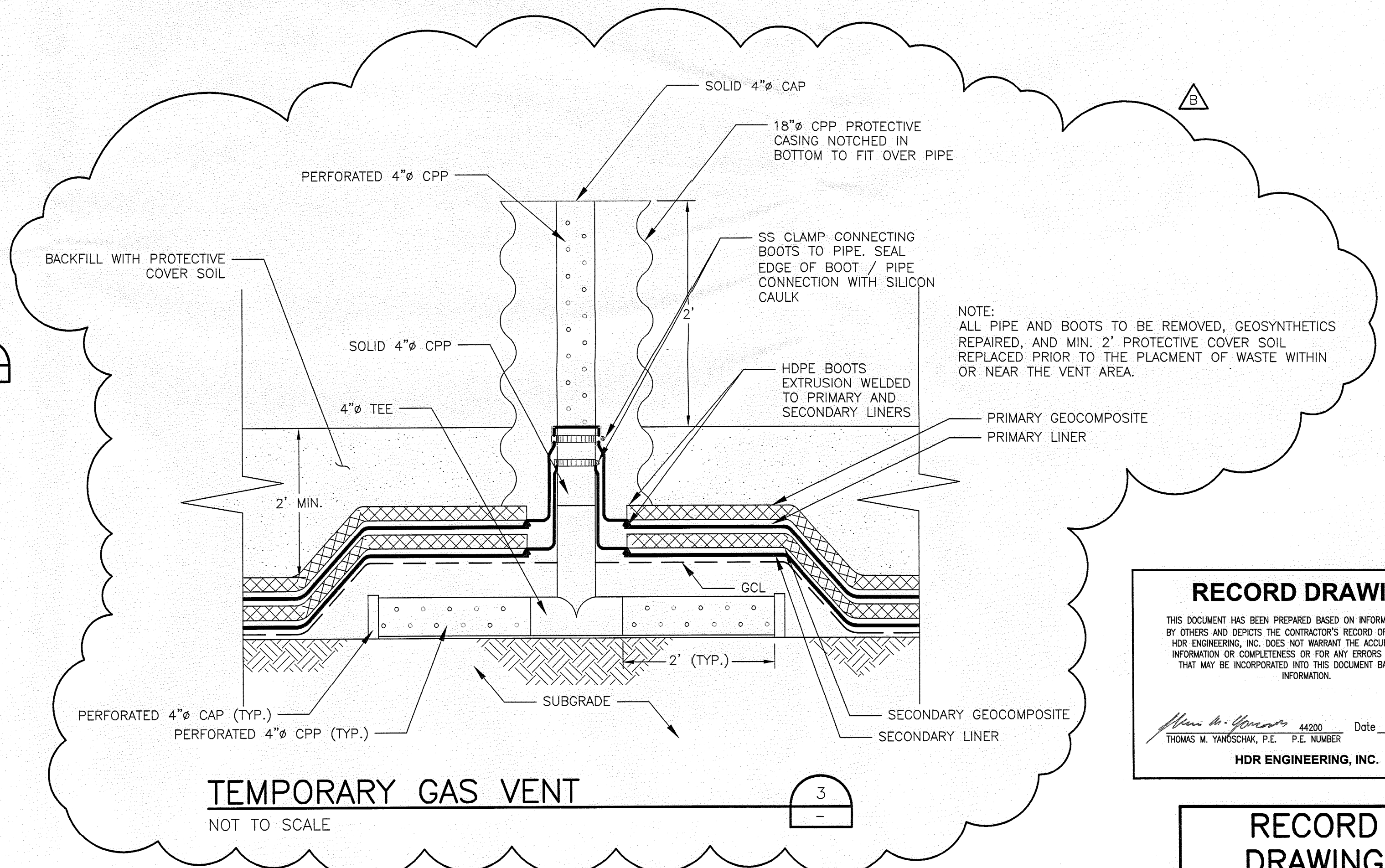
- NOTES:**
- UPPER 2' OF PERIMETER BERM TO BE INSTALLED AFTER LINER SYSTEM IS INSTALLED.
 - THIS DETAIL APPLICABLE TO SOUTHERN PART OF WEST PERIMETER BERM.

EXTERIOR PERIMETER BERM (TOP EL > 33.0)
NOT TO SCALE



- NOTES:**
- TERMINATE GDL BENEATH LEACHATE COLLECTION AND LEAK DETECTION PIPES. REMOVE ANY GEOTEXTILE FLAPS ON GDL SO IT DRAINS FREELY TO PIPES.
 - PROVIDE TEXTURED 60 MIL HDPE GCL UNDER LINER WHERE TRENCH BOTTOM IS BELOW EL. 22.0 NGVD (SEE DETAIL 3, SHEET C-14).

TOE DRAIN (CELL 4)
NOT TO SCALE



- NOTE:**
ALL PIPE AND BOOTS TO BE REMOVED, GEOSYNTHETICS REPAIRED, AND MIN. 2' PROTECTIVE COVER SOIL REPLACED PRIOR TO THE PLACMENT OF WASTE WITHIN OR NEAR THE VENT AREA.

TEMPORARY GAS VENT
NOT TO SCALE

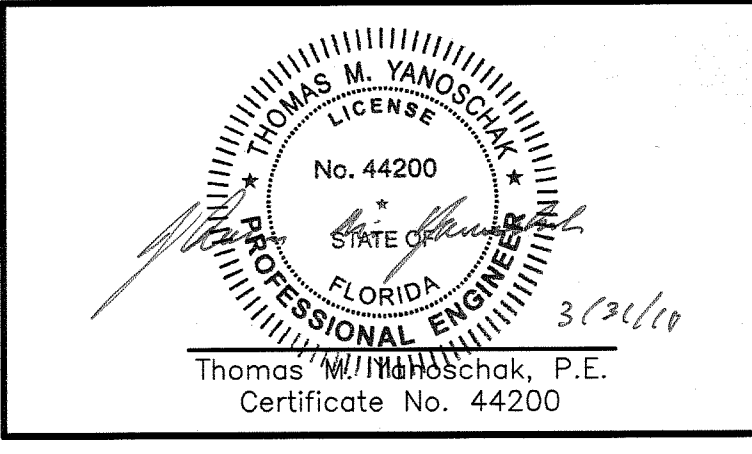
RECORD DRAWING
THIS DOCUMENT HAS BEEN PREPARED BASED ON INFORMATION PROVIDED BY OTHERS AND DEPICTS THE CONTRACTOR'S RECORD OF INSTALLATIONS. HDR ENGINEERING, INC. DOES NOT WARRANT THE ACCURACY OF SUCH INFORMATION OR COMPLETENESS OR FOR ANY ERRORS OR OMISSIONS THAT MAY BE INCORPORATED INTO THIS DOCUMENT BASED ON THE INFORMATION.
THOMAS M. YANOSCHAK, P.E. No. 44200 Date 3/31/10
HDR ENGINEERING, INC.

RECORD DRAWING



ISSUE	DATE	DESCRIPTION
B	03/2010	RECORD DRAWING
A	02/2009	ISSUED FOR CONSTRUCTION, CONFORMED TO ADDENDA

PROJECT MANAGER	T.M. YANOSCHAK
REVIEWED BY	J.C. READLING
DRAWN BY	L.E. PATTERSON
PROJECT NUMBER	001916-43485-018



SARASOTA COUNTY
Central County Solid Waste Disposal Complex
PHASE II CLASS I LANDFILL EXPANSION
CONSTRUCTION DRAWINGS
FLORIDA

FLORIDA DEPARTMENT OF ENVIRONMENTAL PROTECTION
APR 13 2010
SOUTHWEST DISTRICT TAMPA
LINER AND BERM DETAILS (BID ALTERNATE 1)
ADDENDUM NO. 4
SCALE AS SHOWN
FILENAME 00C-09A.dwg
SHEET **C-09A**