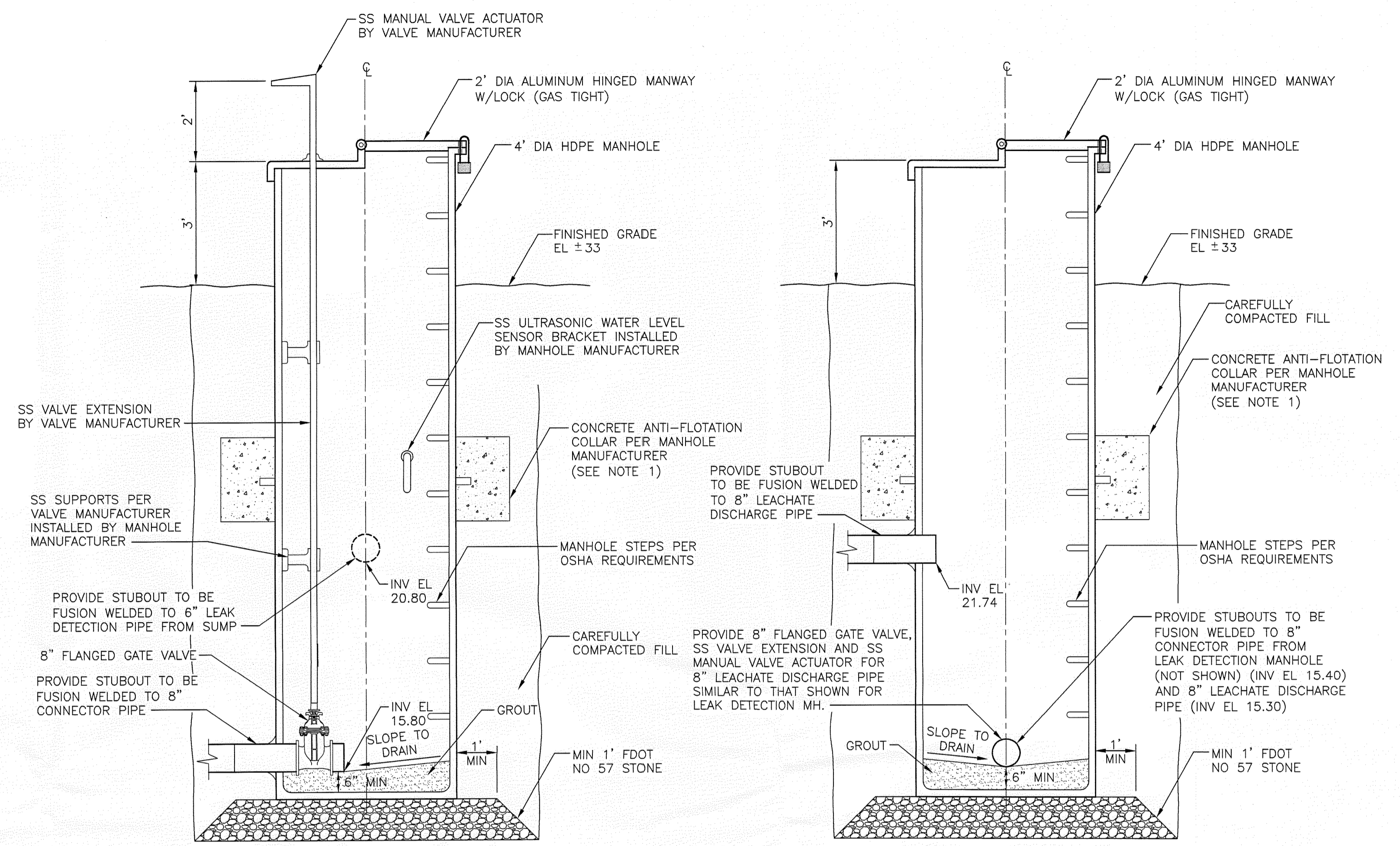
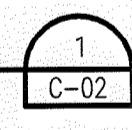


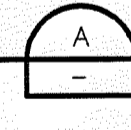
- (SEE NOTE 3)
- NOTES:
1. ALL PIPES SHALL BE SDR 11 HDPE.
  2. LEAK DETECTION PIPE CONTINUES BENEATH LEACHATE COLLECTION PIPE TO SUMP.
  3. INVERTS OF LEACHATE COLLECTION PIPE AND LEAK DETECTION PIPE AT PUMP ARE 22.0 FEET NGVD AND 21.0 FEET NGVD, RESPECTIVELY (SEE SECTION A ON SHEET C-14)

**LEACHATE COLLECTION / LEAK DETECTION MANHOLE PLAN**  
**CELL 1**  
 NOT TO SCALE



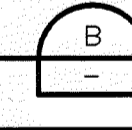
- NOTES:
1. CONCRETE COLLAR SHALL BE DESIGNED BY MANHOLE MANUFACTURER. COMPUTATIONS FOR UPLIFT AND SHOP DRAWINGS SHALL BE SUBMITTED TO ENGINEER.
  2. LOCATIONS OF PIPE STUBOUTS HAVE BEEN ADJUSTED FOR EASE OF REPRESENTATION. SEE PLAN VIEWS FOR PROPER PIPE ORIENTATION.
  3. PROVIDE ULTRASONIC WATER LEVEL SENSOR TO MEASURE LEACHATE LEVELS IN MANHOLE WITH DIGITAL DISPLAY MOUNTED ON PANEL LOCATED ADJACENT TO MANHOLE.

**LEAK DETECTION MANHOLE**  
 NOT TO SCALE



- NOTES:
1. CONCRETE COLLAR SHALL BE DESIGNED BY MANHOLE MANUFACTURER. COMPUTATIONS FOR UPLIFT AND SHOP DRAWINGS SHALL BE SUBMITTED TO ENGINEER.
  2. LOCATIONS OF PIPE STUBOUTS HAVE BEEN ADJUSTED FOR EASE OF REPRESENTATION. SEE PLAN VIEWS FOR PROPER PIPE ORIENTATION.

**LEACHATE COLLECTION MANHOLE**  
 NOT TO SCALE



**RECORD DRAWING**

THIS DOCUMENT HAS BEEN PREPARED BASED ON INFORMATION PROVIDED BY OTHERS AND DEPICTS THE CONTRACTOR'S RECORD OF INSTALLATIONS. HDR ENGINEERING, INC. DOES NOT WARRANT THE ACCURACY OF SUCH INFORMATION OR COMPLETENESS OR FOR ANY ERRORS OR OMISSIONS THAT MAY BE INCORPORATED INTO THIS DOCUMENT BASED ON THE INFORMATION.

*Thomas M. Yanoschak* 2010 Date 3/31/10  
 THOMAS M. YANOSCHAK, P.E. P.E. NUMBER

HDR ENGINEERING, INC.

**RECORD DRAWING**

**HDR**

HDR Engineering, Inc.  
 5426 Bay Center Drive, Suite 400  
 Tampa, FL 33609-3444  
 (813) 282-2300  
 Florida Certificate of Authorization  
 No. 00094213

ISSUE	DATE	DESCRIPTION
B	03/2010	RECORD DRAWING
A	02/2009	ISSUED FOR CONSTRUCTION, CONFORMED TO ADDENDA

PROJECT MANAGER	T.M. YANOSCHAK
REVIEWED BY	J.C. READLING
DRAWN BY	J. HATCHER
PROJECT NUMBER	001916-43485-018

Professional Engineer Seal for Thomas M. Yanoschak, No. 44200, State of Florida, dated 3/21/10.

**SARASOTA COUNTY**

**Central County Solid Waste Disposal Complex**  
**PHASE II CLASS I LANDFILL EXPANSION**  
**CONSTRUCTION DRAWINGS**

SARASOTA COUNTY FLORIDA

**LEACHATE COLLECTION SYSTEM DETAILS**  
**CELL 1**

FLORIDA DEPARTMENT OF ENVIRONMENTAL PROTECTION  
 APR 13 2010  
 SOUTHWEST DISTRICT  
 TAMPA

0 1" 2"

FILENAME	00C-16.dwg	SHEET	C-16
SCALE	AS SHOWN		