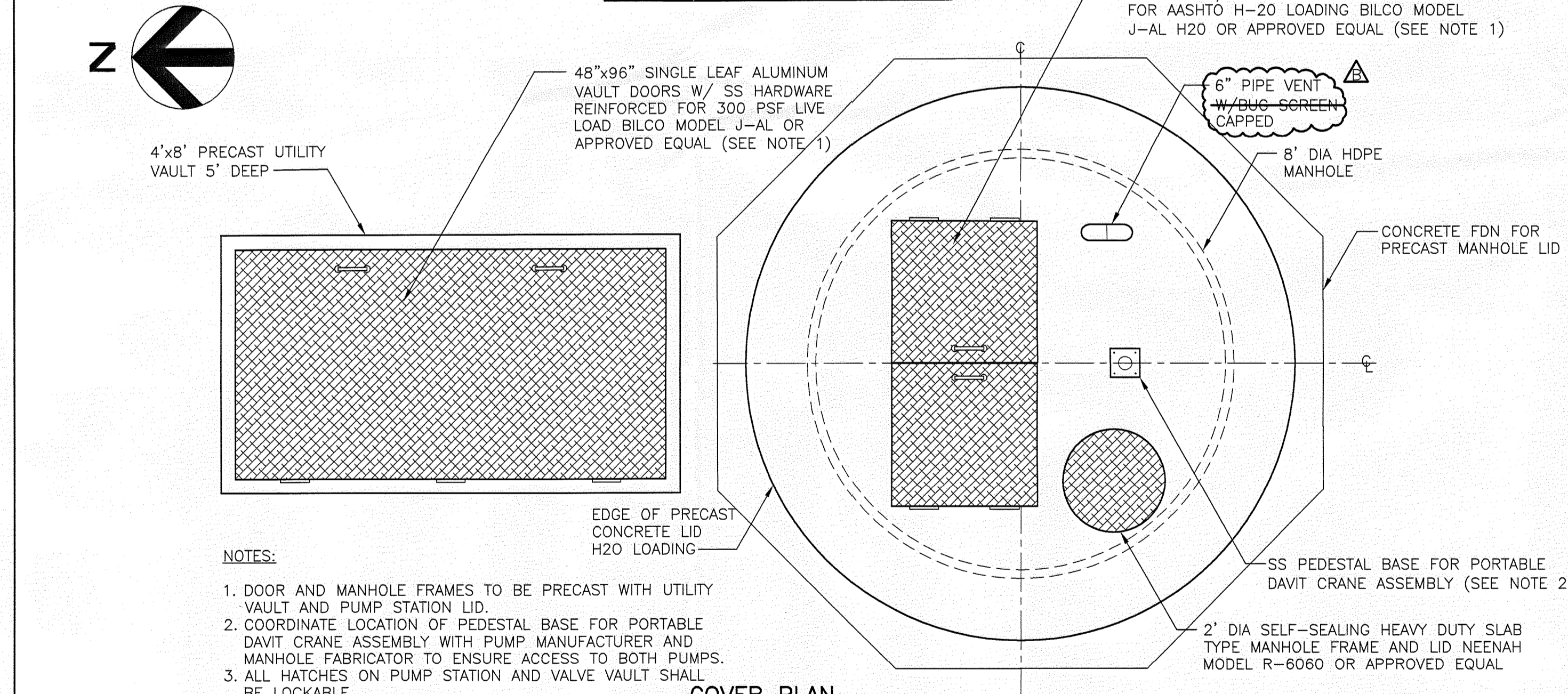


PLAN WITH COVERS REMOVED



COVER PLAN

NOTES:

1. DOOR AND MANHOLE FRAMES TO BE PRECAST WITH UTILITY VAULT AND PUMP STATION LID.
2. COORDINATE LOCATION OF PEDESTAL BASE FOR PORTABLE DAVIT CRANE ASSEMBLY WITH PUMP MANUFACTURER AND MANHOLE FABRICATOR TO ENSURE ACCESS TO BOTH PUMPS.
3. ALL HATCHES ON PUMP STATION AND VALVE VAULT SHALL BE LOCKABLE.

NOTES:

1. CONCRETE COLLAR SHALL BE DESIGNED BY MANHOLE MANUFACTURER. COMPUTATIONS FOR UPLIFT AND SHOP DRAWINGS SHALL BE SUBMITTED FOR ENGINEER'S APPROVAL.
2. LOCATIONS OF PIPE STUBOUTS HAVE BEEN ADJUSTED FOR EASE OF REPRESENTATION. SEE PLAN VIEWS FOR PROPER PIPE ORIENTATION.
3. ALL PIPE SHALL BE SDR 11 HDPE EXCEPT FOR 8" DIA MANHOLE. THICKNESS OF PIPE SHALL BE DETERMINED BY MANHOLE MANUFACTURER.
4. PROVIDE ONE (1) 500LB CAPACITY SS PORTABLE DAVIT CRANE FOR USE WITH LEACHATE PUMP STATION. CRANE SHALL HAVE SS HAND WINCH WITH QUICK DISCONNECT ANCHOR FOR QUICKLY ATTACHING OR REMOVING THE WIRE ROPE FOR LIFTING PUMPS. CRANE SHALL BE CAPABLE OF ROTATING 360°. PROVIDE BASE COVER FOR PEDESTAL WHEN CRANE IS NOT IN USE. THEN MODEL 5122 SS OR APPROVED EQUAL.
5. DIRECT EXHAUST FROM AIR RELEASE VALVE TO FLOOR DRAIN WITH 1/2" SS PIPE.
6. PRECAST CONCRETE LID SHALL BE DESIGNED BY SUPPLIER, PER SPEC 2516. CALCULATIONS SHALL BE SUBMITTED FOR ENGINEER'S APPROVAL.
7. HOLE SIZES AND LOCATIONS FOR ELECTRICAL/INSTRUMENTATION SERVICES SHALL BE COORDINATED WITH EQUIPMENT SUPPLIERS AND ELECTRICAL SUBCONTRACTOR.

BACKFILL WITH CLASS I OR CLASS II MATERIAL AS DEFINED IN ASTM D2321 WHICH HAS BEEN COMPACTED TO A MINIMUM 95% STANDARD PROCTOR DENSITY. BACKFILL SHALL EXTEND A MINIMUM OF 3.5 FEET FROM THE PERIMETER OF THE MANHOLE FOR THE FULL HEIGHT OF MANHOLE. BACKFILL SHALL EXTEND LATERALLY TO UNDISTURBED SOIL.

4" SS DISCHARGE PIPE BY PUMP MANUFACTURER

SUBMERSIBLE LEACHATE PUMP (2)

MIN 1' FDOT NO. 57 STONE

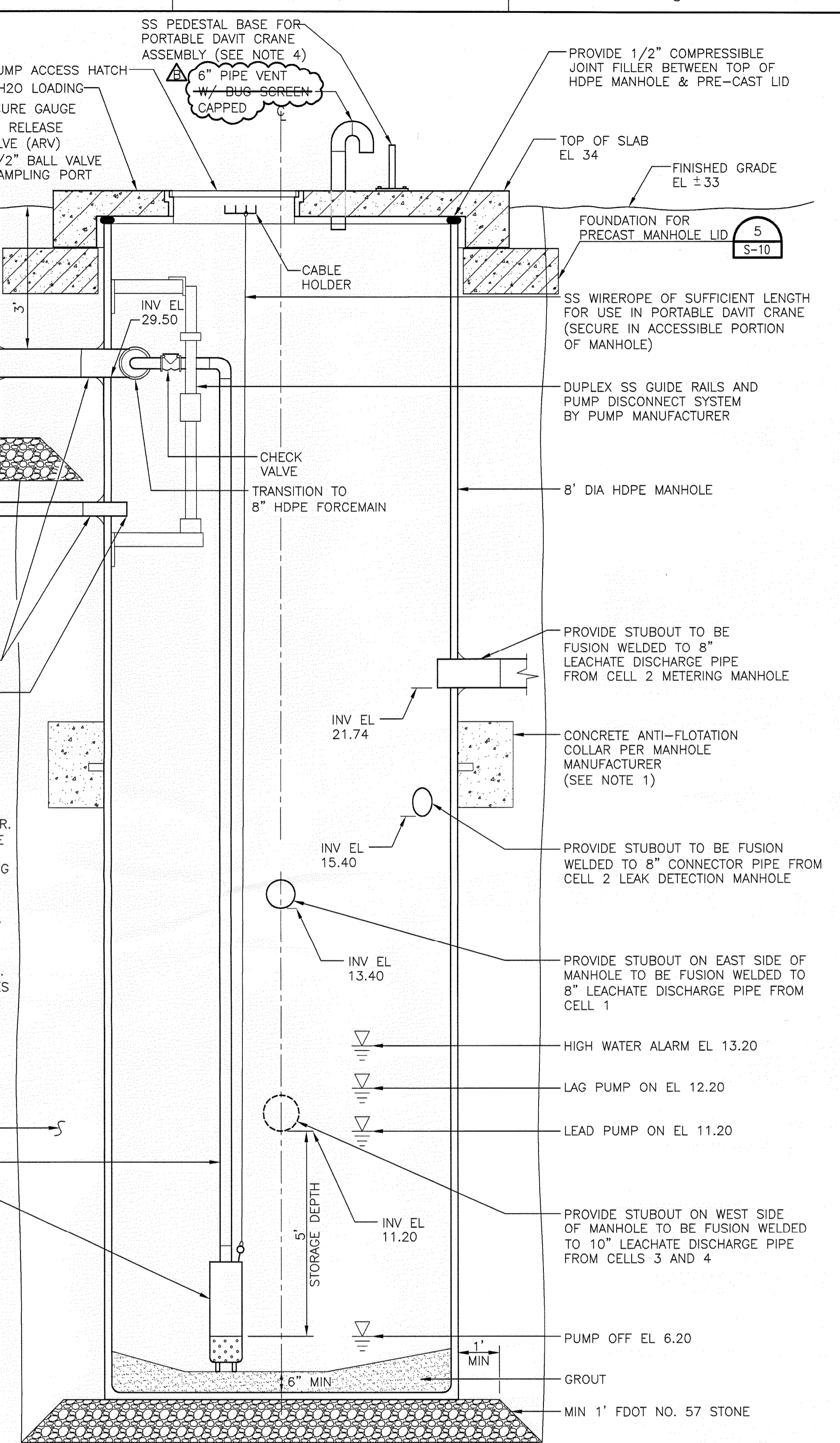
SS PEDESTAL BASE FOR PORTABLE DAVIT CRANE ASSEMBLY (SEE NOTE 2)

2" DIA SELF-SEALING HEAVY DUTY SLAB TYPE MANHOLE FRAME AND LID NEEHAH MODEL R-6060 OR APPROVED EQUAL

RECORD DRAWING

THIS DOCUMENT HAS BEEN PREPARED BASED ON INFORMATION PROVIDED BY OTHERS AND DEPICTS THE CONTRACTOR'S RECORD OF INSTALLATIONS. HDR ENGINEERING, INC. DOES NOT WARRANT THE ACCURACY OF SUCH INFORMATION OR COMPLETENESS OR FOR ANY ERRORS OR OMISSIONS THAT MAY BE INCORPORATED INTO THIS DOCUMENT BASED ON THE INFORMATION.

Thomas M. Yanoschak
 THOMAS M. YANOSCHAK, P.E.
 P.E. NUMBER 44200 Date 3/31/10
 HDR ENGINEERING, INC.



SECTION NOT TO SCALE

RECORD DRAWING

LEACHATE PUMP STATION PLAN NOT TO SCALE

HDR
 HDR Engineering, Inc.
 5426 Bay Center Drive, Suite 400
 Tampa, FL 33609-3444
 (813) 282-2300
 Florida Certificate of Authorization
 No. 00004213

ISSUE	DATE	DESCRIPTION
B	03/2010	RECORD DRAWING
A	02/2009	ISSUED FOR CONSTRUCTION, CONFORMED TO ADDENDA

PROJECT MANAGER	T.M. YANOSCHAK
REVIEWED BY	J.C. READLING
DRAWN BY	J. HATCHER
PROJECT NUMBER	001916-43485-018

Professional Engineer Seal for Thomas M. Yanoschak, P.E., License No. 44200, State of Florida, Certificate No. 44200, dated 3/31/10.

Central County Solid Waste Disposal Complex
 PHASE II CLASS I LANDFILL EXPANSION
 CONSTRUCTION DRAWINGS
 SARASOTA COUNTY FLORIDA

LEACHATE COLLECTION SYSTEM DETAILS - LEACHATE PUMP STATION
 FLORIDA DEPARTMENT OF ENVIRONMENTAL PROTECTION
 APR 13 2010
 SOUTHWEST DISTRICT TAMPA

Scale: 0 1" 2"
 FILENAME: OOC-19.dwg
 SCALE: AS SHOWN
 SHEET: C-19