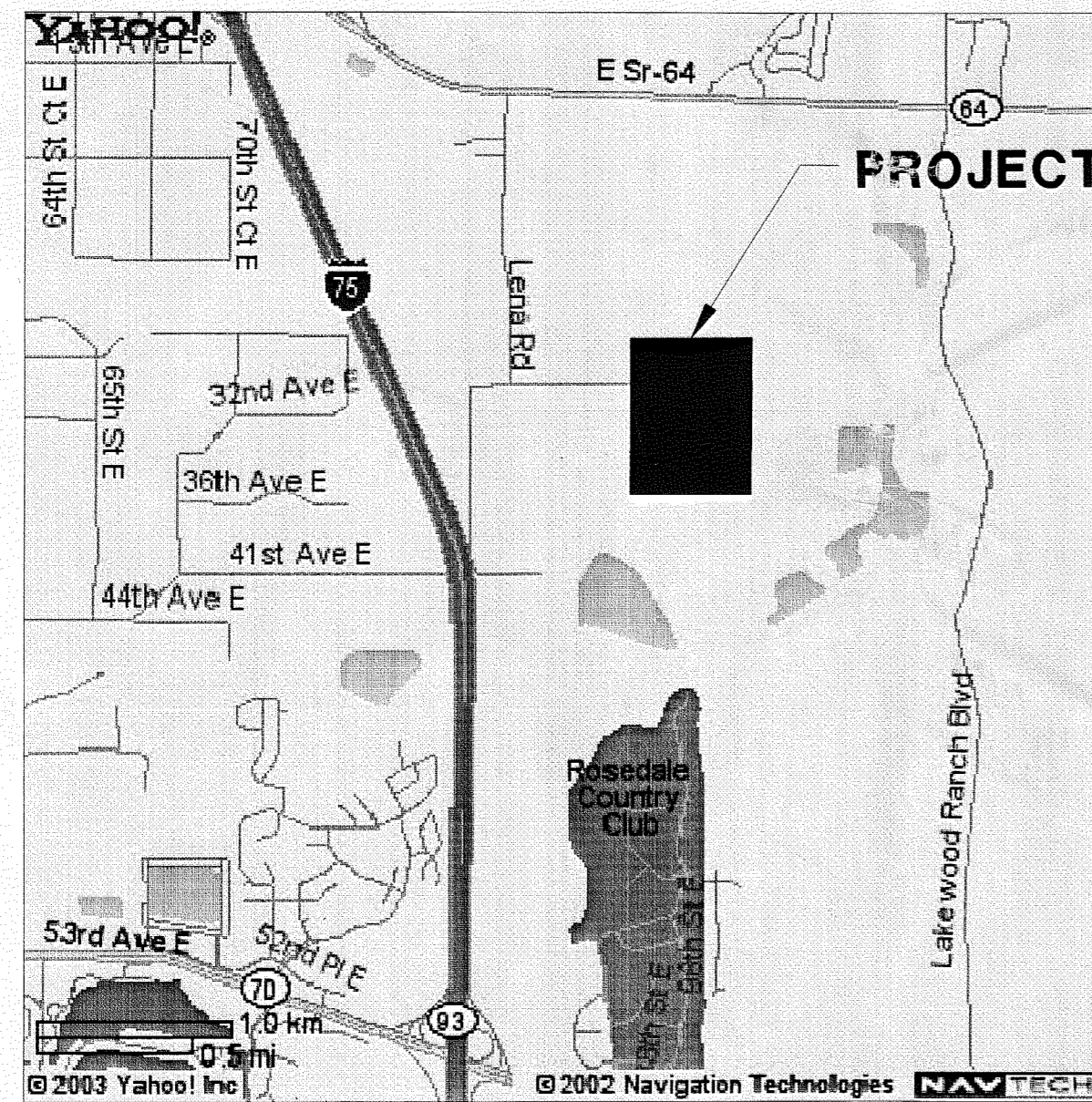


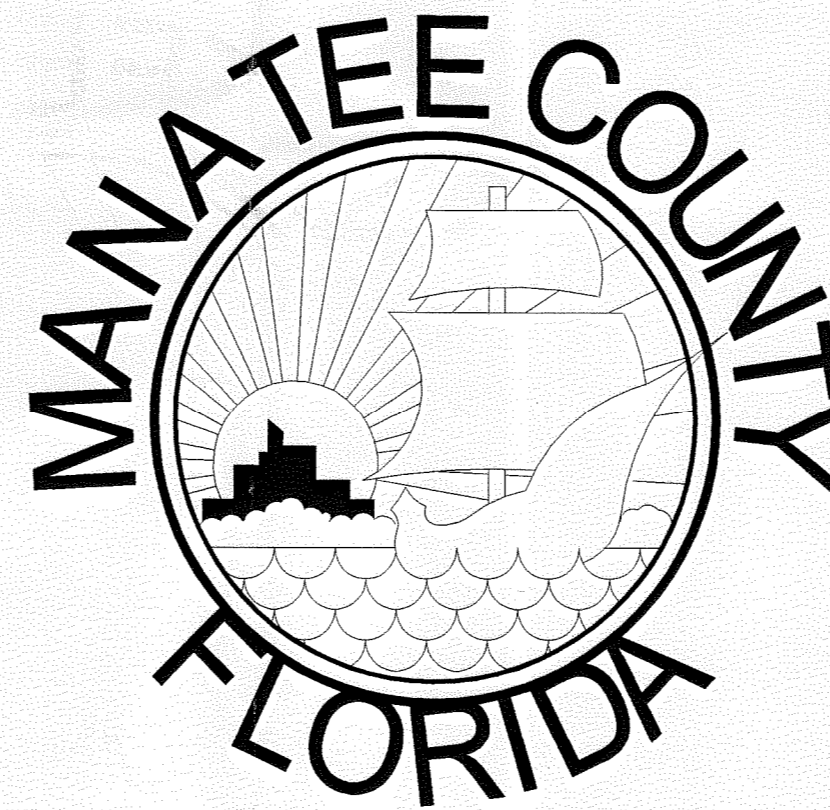
FLORIDA DEPARTMENT OF ENVIRONMENTAL PROTECTION
MAY 13 2010
SOUTHWEST DISTRICT
TAMPA

PERMIT RENEWAL DRAWINGS FOR MANATEE COUNTY - LENA ROAD CLASS I LANDFILL FILL SEQUENCE PLAN FROM 2009 TO 2015



LENA ROAD CLASS I LANDFILL
3333 LENA ROAD
BRADENTON, FLORIDA 34211

MANATEE COUNTY



MANATEE COUNTY
UTILITIES DEPARTMENT
SOLID WASTE DIVISION
3333 LENA ROAD
BRADENTON, FLORIDA 34211

APRIL 2010

ENGINEER'S PROJECT NO. 100008517

LIST OF DRAWINGS

- C-1 COVER
- C-2 GENERAL SITE PLAN
- C-3 SITE TOPOGRAPHIC SURVEY
- C-4 EXISTING GRADE - JANUARY 25, 2010
- C-5 STAGE III LANDFILL - SEQUENCE 1 (FEB. 2009 - OCT. 2009)
- C-6 STAGE III LANDFILL - SEQUENCE 2 (OCT. 2009 - OCT. 2010)
- C-7 STAGE III LANDFILL - SEQUENCE 3 (OCT. 2010 - SEPT. 2012)
- C-8 STAGE III LANDFILL - SEQUENCE 4 (SEPT. 2012 - NOV. 2013)
- C-9 STAGE II LANDFILL - EXCAVATION PLAN (SEPT. 2010- NOV. 2013)
- C-10 STAGE II LANDFILL - SEQUENCE 5 (NOV. 2013 - JAN. 2015)
- C-11 STAGE III LANDFILL - CROSS SECTIONS
- C-12 STAGE II LANDFILL - CROSS SECTIONS
- C-13 DETAILS
- C-14 STAGE I LANDFILL - GAS WELL LOCATIONS
- C-15 STAGE III LANDFILL - GAS WELL LOCATIONS



An Employee - Owned Company

Consulting Engineers and Planners
482 South Keller Road
Orlando, Florida 32810

POST BUCKLEY, SCHUH & JERNIGAN, Inc.
d/b/a PBS&J
2001 N.W. 107th Ave., Miami, FL 33172-2507
FBPR Certificate of Authorization No. 24

Name: JOSEPH L. MILLER

Florida P.E. No. 39172

Signature: [Handwritten Signature]
Date: 05/18/2010

FLORIDA DEPARTMENT OF ENVIRONMENTAL PROTECTION
MAY 18 2010
SOUTHWEST DISTRICT
TAMPA

U:\OldH_S\ENVCADD\WASTEMAN\Manatee\Permit-Renewal-2010\mir_C-1_S3-cover.dwg May 14, 2010 - 2:50pm

MANATEE COUNTY - LENA ROAD LANDFILL - FILL SEQUENCE PLAN 2009-2015 (APRIL 2010)