



December 16, 2010

Susan Pelz, P.E.
Southwest District
Florida Dept. of Environmental Protection
13051 North Telecom Pkwy.
Temple Terrace, FL 33637

Dept. Of Environmental Protection
DEC 17 2010
Southwest District

RE: Citrus County Central Landfill
Landfill Gas Remediation System As-Built Drawings
Jones Edmunds Project No.: 03860-038-01

Dear Ms. Pelz:

Jones Edmunds, on behalf of Citrus County, installed a solar powered soil vapor extraction system to remediate groundwater contamination near MW-10 at the Citrus Central Landfill. The system has been operating since October 2010. The well locations were surveyed by the County. A site map showing the location of the system is included as Figure 1.

The system consists of five soil vapor extraction wells installed between MW-10 and the closed landfill. The wells are spaced approximately 50 feet apart. Three wells were installed to 100 feet total depth and two wells were installed to 60 feet total depth. The wells are constructed of 4-inch-diameter PVC and 0.020-inch slotted PVC screen. Boring logs and well construction details are included in Attachment 1 and Figure 2.

The extraction wells are connected to a solar powered electric blower by a 2-inch diameter PVC suction line. Each well has a valve to modify flow from the well, a sample port to measure landfill gas concentration, and a condensate collection trap. The extraction system construction details are included in Figure 3. The system's electrical plan is shown in Figure 4.

Carbon Dioxide, Methane, and Oxygen measurements will be collected from each extraction well on a bi-monthly basis for one year. Table 1 presents gas measurements that have been collected since operation of the system began. Landfill gas has been detected in four of the five extraction wells. A minor amount of condensate has been observed in the condensate traps of GEW-3 and GEW-4. If enough condensate accumulates, a condensate sample will be collected for laboratory analysis. The condensate traps will be checked bi-monthly and accumulated condensate not collected for analysis will be disposed of at the landfill leachate collection system.

730 NE Waldo Rd
Gainesville, FL 32641

352.377.5821 Phone
352.377.3166 Fax
www.jonesedmunds.com

Table 1 – Gas Readings from Extraction Wells									
Extraction Well	October 1, 2010			October 15, 2010			November 18, 2010		
	O ₂ (%Vol.)	CH ₄ (%LEL)	CO ₂ (%Vol.)	O ₂ (%Vol.)	CH ₄ (%LEL)	CO ₂ (%Vol.)	O ₂ (%Vol.)	CH ₄ (%LEL)	CO ₂ (%Vol.)
GEW-1	20.9%	0%	0%	20.9%	0%	0.4%	18.5%	3%	1.8%
GEW-2	18.8%	0%	1.8%	15.8%	0%	4.8%	17.5%	0%	3.4%
GEW-3	20.3%	1%	0.6%	17.2%	3%	3.6%	15.4%	5%	5.4%
GEW-4	20.7%	0%	0.2%	20.9%	0%	0%	15.0%	0%	4.4%
GEW-5	20.3%	0%	0%	20.9%	0%	0%	20.9%	0%	0%

Table 1 Continued– Gas Readings from Extraction Wells			
Extraction Well	December 10, 2010		
	O ₂ (%Vol.)	CH ₄ (%LEL)	CO ₂ (%Vol.)
GEW-1	20.2%	0%	0.2%
GEW-2	17.5%	0%	2.8%
GEW-3	12.1%	7%	8.2%
GEW-4	10.0%	1%	8.6%
GEW-5	20.8%	0%	0%

The system will be adjusted to maximize gas extraction based on the gas measurements by opening and closing the valves to the extraction wells. After one year of bi-monthly monitoring, we will submit a report detailing the groundwater sampling results and the gas measurements collected from the extraction system. The report will be submitted to FDEP by October 31, 2011.

If you have any questions concerning these documents, please call me at (352) 377-5821 ext. 5375.

Sincerely,



Troy Hays
Project Manager

\\GNV-PROJECTS\projects\03860-CitrusCounty\038-01-LFGRemediation\As-Built Report\2010-12-16-LTR-SPelz-FDEP-CitrusLFG-AsBuilts.doc

Enclosures

xc: John Morris, FDEP
Casey Stephens, Citrus County

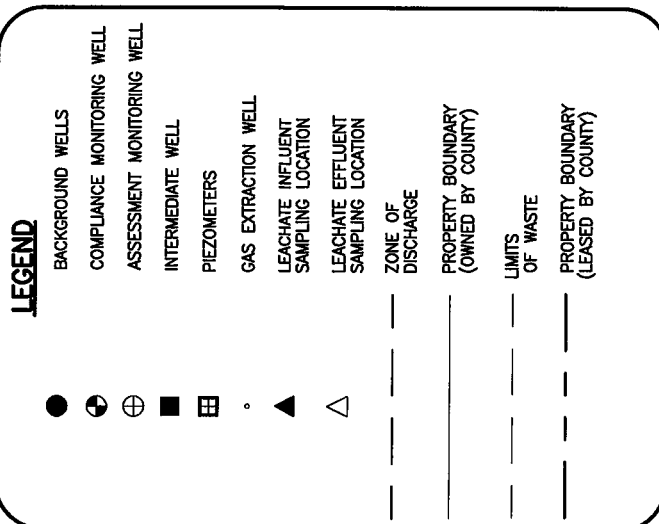
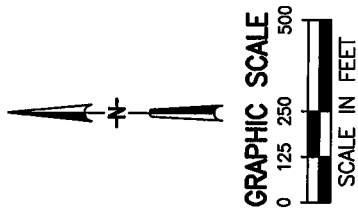
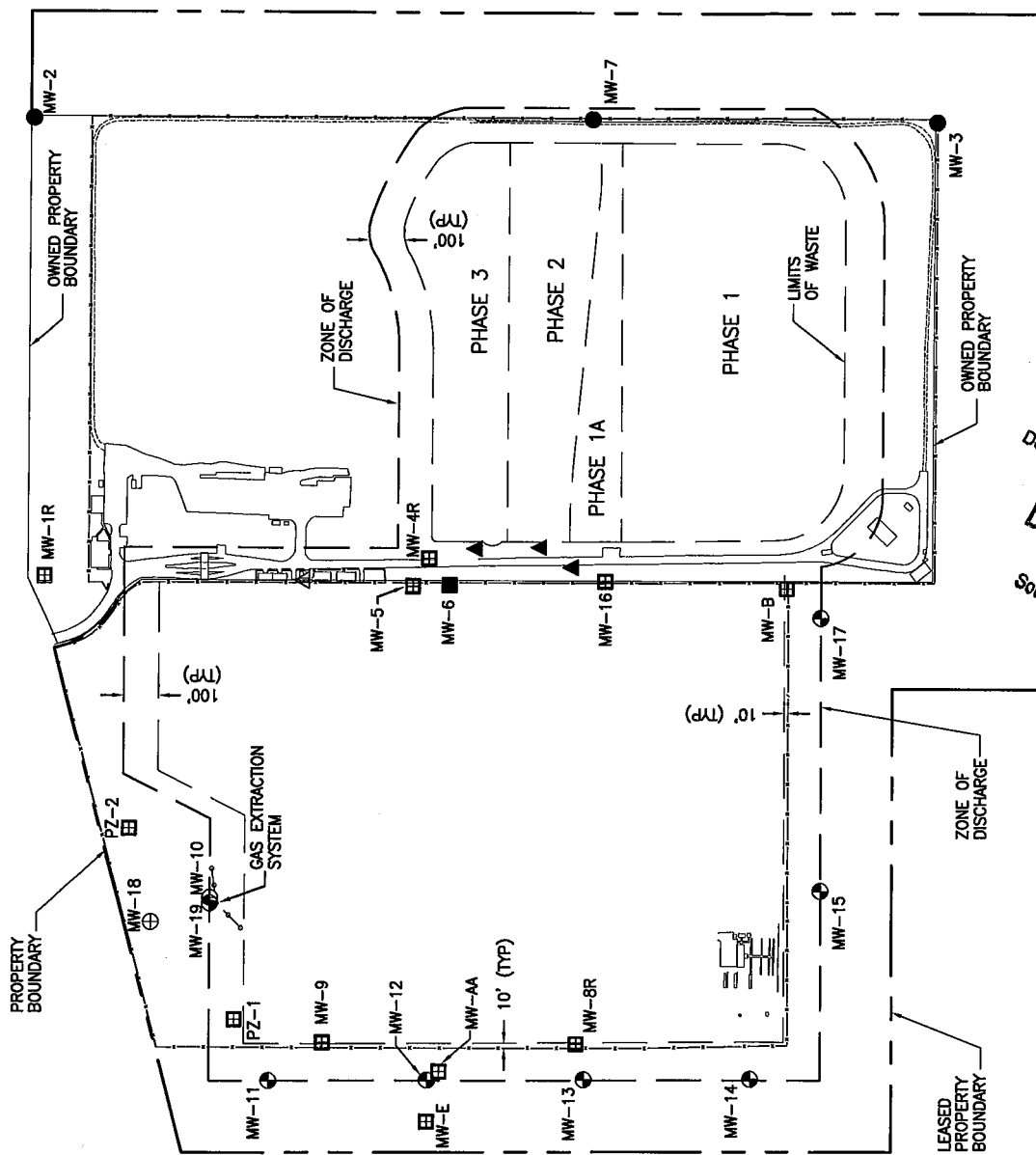


FIGURE 1
SITE PLAN
GAS EXTRACTION SYSTEM
CITRUS COUNTY CENTRAL LANDFILL

Dept. Of Environmental Protection
DEC 17 2010
Southwest District

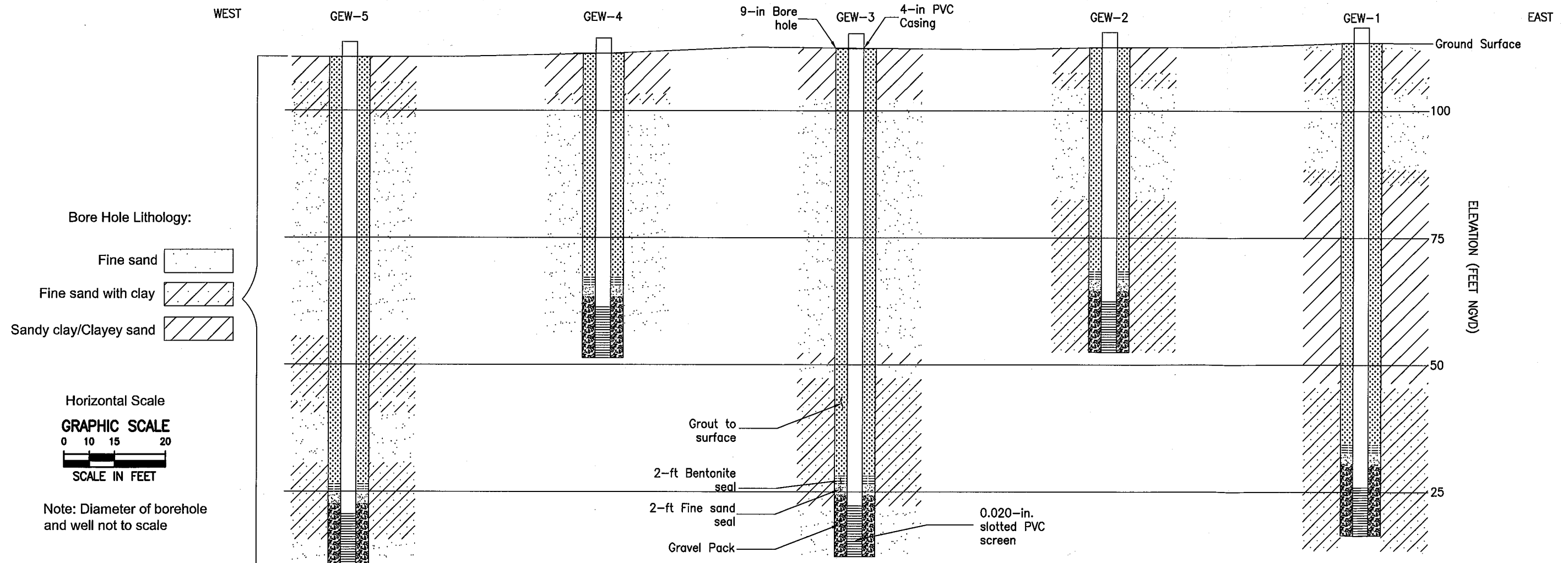
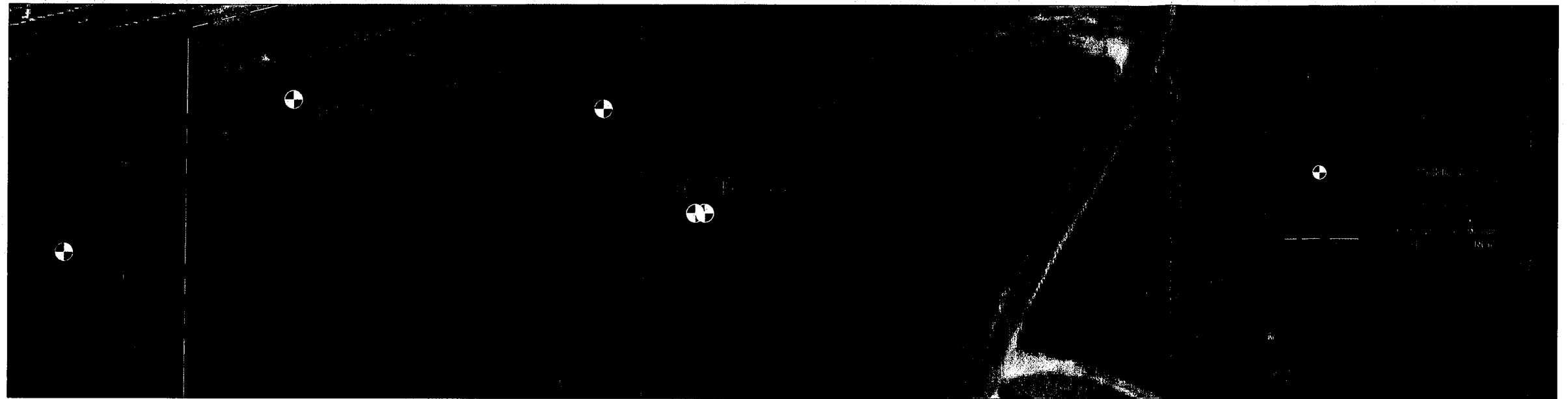


FIGURE 2
GAS EXTRACTION WELL LOCATION
AND CONSTRUCTION DETAILS
CITRUS COUNTY CENTRAL LANDFILL

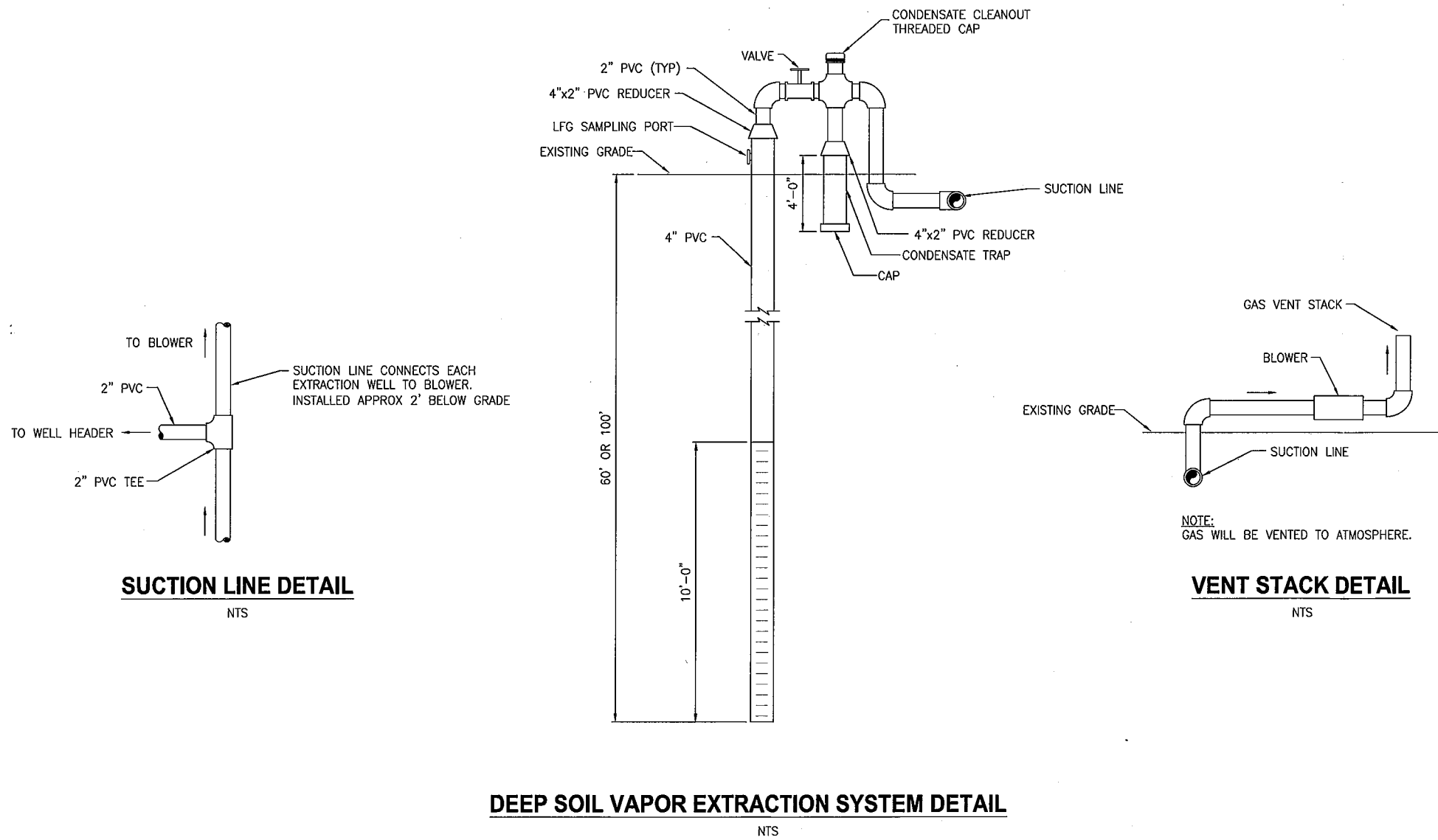


FIGURE 3
GAS EXTRACTION SYSTEM DETAILS
CITRUS COUNTY CENTRAL LANDFILL

03860-038-01

Plotted: 12/13/10 8:34am mhays

K:\Jones Edmunds\Citrus County Central Landfill\Figure 4 - CC LANDFILL ELECT DIAG.dwg

LAST SAVED: 12/6/2010 3:29 PM MHAYS

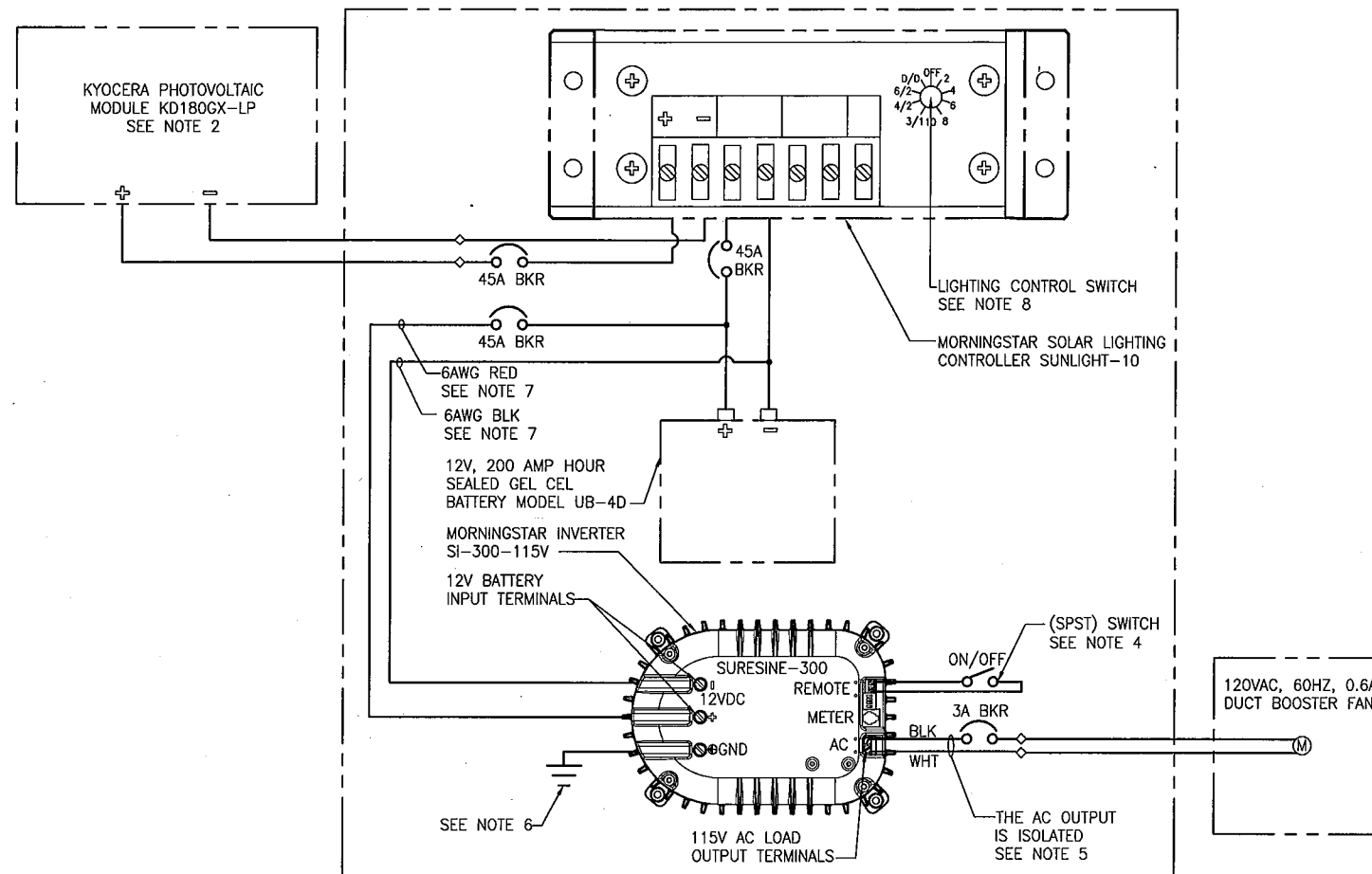
ELECTRICAL ABBREVIATIONS

A	AMPERE
AC	ALTERNATING CURRENT
AFF	ABOVE FINISHED FLOOR
AFG	ABOVE FINISHED GRADE
AMP	AMPERE
AWG	AMERICAN WIRE GAGE
BAT	BATTERY
BC	BARE COPPER
BKR	BREAKER
C	CONDUIT, CONTACTOR, CONDUCTOR,
CB	CIRCUIT BREAKER
CFWE	CABLE FURNISHED WITH EQUIPMENT
CKT	CIRCUIT
CRS	COATED RIGID STEEL CONDUIT
DC	DIRECT CURRENT
SPST	A SINGLE-POLE, SINGLE-THROW
DPDT	DOUBLE-POLE DOUBLE-THROW
DPST	DOUBLE-POLE SINGLE-THROW
F,FU	FUSE
G	GROUND
GALV	GALVANIZED
GND	GROUND
GRS	GALV RIGID STEEL CONDUIT
HP	HORSEPOWER
HZ	HERTZ
IEEE	INSTITUTE OF ELECTRICAL AND ELECTRONIC ENGINEERS
IES	ILLUMINATING ENGINEERING SOCIETY
NC	NORMALLY CLOSED
NEC	NATIONAL ELECTRIC CODE
NEMA	NATIONAL ELECTRICAL MANUFACTURERS ASSOC.
NO	NORMALLY OPEN
NTS	NOT TO SCALE
PH	PHASE
PNL	PANEL
SS	STAINLESS STEEL
SW	SWITCH
V	VOLTAGE, VOLTS

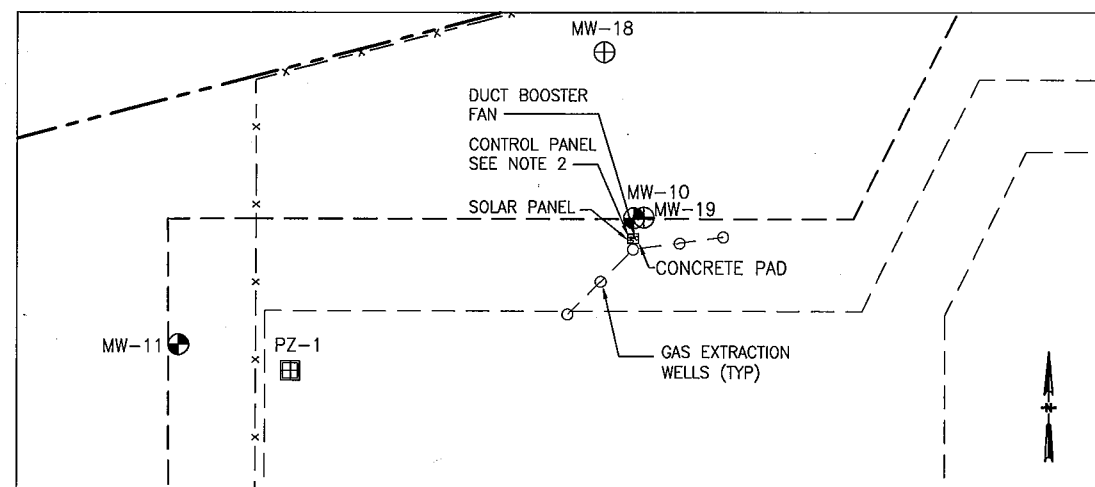
ELECTRICAL LEGENDS

SYMBOL	DESCRIPTION
⑤	MOTOR, HORSEPOWER INDICATED
⊙	GROUND ROD, 5/8"x10'-0" COPPER CLAD
○	CONDUIT UP (MULTIPLE OR SINGLE)
•	CONDUIT DOWN (MULTIPLE OR SINGLE)
---	CONDUIT, EXPOSED
---	CONDUIT IN FLOOR OR UNDERGROUND
---	MULTIPLE CONDUIT RUN (UNDERGROUND UNLESS OTHERWISE INDICATED)
---	EQUIPMENT OUTLINE
ON/OFF	ON-OFF SWITCH
◇	TERMINAL BLOCK (12VDC)
○	CIRCUIT BREAKER
□	FUSE

SOME SYMBOLS AND ABBREVIATIONS MAY APPEAR ON
THE LEGEND AND NOT ON THE DRAWINGS.



ELECTRICAL DIAGRAM



CITRUS COUNTY CENTRAL LANDFILL ELECTRICAL PLAN

NTS

NOTES

1. PROVIDE OND SPARE CIRCUIT BREAKER FOR EACH TYPE USED.
2. MOUNT ALL ELECTRICAL DEVICES IN A NEMA 4X 316 STAINLESS STEEL ENCLOSURE WITH PADLOCKING HASP. ENCLOSURE SHALL BE MINIMUM 36"X30"X20" MODEL SPN4SS6-363020 BY SHAEFER'S.
3. ALL COMPONENTS SHALL BE SIZED PER NATIONAL ELECTRICAL CODE.
4. USE 16 AWG WIRE TO CONNECT REMOTE TERMINALS OF THE SPST ON/OFF SWITCH.
5. AC LINE AND NEUTRAL ARE INTERCHANGEABLE. USE UL LISTED 12AWG BLACK WIRE FOR AC LINE AND UL LISTED 12AWG WHITE WIRE FOR AC NEUTRAL. THE EARTH GROUND LEG DEFINES AC NEUTRAL.
6. USE UL 4AWG OR LARGER GREEN WIRE FOR GROUND.
7. USE UL LISTED 6AWG OR LARGER BLACK WIRE TO CONNECT 12V BATTERY NEGATIVE TO NEGATIVE DC INPUT TERMINAL. USE UL LISTED 6AWG OR LARGER RED WIRE TO CONNECT THE 12V BATTERY POSITIVE TO THE DC INPUT POSITIVE TERMINAL ON THE SURESINE UNIT.
8. TURN LIGHTING CONTROL SWITCH TO THE LIGHTING OPTION DESIRED. REFER TO SUNLIGHT SOLAR LIGHTING CONTROLLER OPERATOR'S MANUAL FOR AVAILABLE LIGHTING CONTROL OPTIONS.

FIGURE 4
GAS EXTRACTION SYSTEM
ELECTRICAL PLAN
CITRUS COUNTY CENTRAL LANDFILL

**ATTACHMENT 1
BORING LOGS**

TEST BORING FIELD REPORT

Project Name: Citrus County Central Remediation
 Project Number: 03860-038-01
 Drilling Contractor: Huss
 Drilling/Sampling Methods: Hollow-stem auger

Boring Number: GEW-1

Page 1 of 3

Test Boring Completed: 3/9/2010, Well Completed: 3/10/2010

Jones Edmunds Field Geologist: M. Hays

Elevations: Ground: 113.540 ft NGVD 29 (Surveyed by Citrus County)

Depth	SPT Data		Description of Soil	Well Details
	ASTM D1586 per 6"	N		
0			SAND, brown, fine-grained, SP	
			CLAYEY SAND, orange-brown, SC	
			CLAYEY SAND, red-brown/yellow-brown, SC	
5			CLAYEY SAND, light yellow-brown, SC	5
			SAND with clay, light yellow, fine-grained, SP-SC	
10			SAND with clay, yellow-brown, SP-SC	10
			SAND, light yellow, fine-grained, damp, SP	
15			SAND, very light yellow/white, very fine-grained, SP	15
			SAND, white, very fine-grained, damp, SP	
20			SAND, white/very light yellow, very fine-grained, damp, SP	20
			SAND, light yellow-brown, fine-grained, damp, SP	
25			SAND, light yellow-brown, fine-grained, damp, SP	25
			SAND, light yellow-brown, fine-grained, damp, SP	
30			SAND, light yellow-brown, fine-grained, damp, SP	30
			SAND, light yellow-brown, fine-grained, damp, SP	
35			SAND, light yellow-brown, fine-grained, damp, SP	35
			SAND, light yellow-brown, fine-grained, damp, SP	
40			SAND, light yellow-brown, fine-grained, damp, SP	40
			SAND, light yellow-brown, fine-grained, damp, SP	
42			SAND, light yellow-brown, fine-grained, damp, SP	42

Notes and Additional Data/Info. (Specify if Other Materials Used):

Total Well Depth = 100 ft bls

Well Casing/Pipe: Diam. and Type = 2-in Sch. 40 PVC; Solid Length = 90 ft bls; Screen = 10 ft, 0.020-in Gravel Filter Pack = 6 50-lb Bags; Type = Pea Gravel; Placed from 100 to 88 ft bls (measured)

Annular Seal: Type = Fine Sand/Bentonite; Thickness = 1/3 ft; Placed from 88 to 84 ft bls (measured)

Grout = 20 94-lb Bags of Cement Grout to Surface;

JONES EDMUNDS
 ENGINEERS | ARCHITECTS | SCIENTISTS

TEST BORING FIELD REPORT

Boring Number: GEW-1

Page 2 of 3

Project Name: Citrus County Central Remediation

Project Number: 03860-038-01

Depth	SPT Data ASTM D1586		Description of Soil	Well Details
	per 6"	N		
42				
45			SAND, white to light yellow-brown to white, fine-grained, damp, SP	45
50			SAND with silt, orange-brown, fine-grained, SP-SM	50
55			SAND, white/very light yellow, fine-grained, damp, SP	55
60			SAND, orange-brown to white, fine-grained, SP	60
65			CLAYEY SAND, red-brown, damp, SC	65
70			SAND, light yellow, damp, SP	70
75			SAND with clay, orange-brown, SP-SC	75
80			SAND, light yellow, fine-grained, SP	80
85			SAND with clay, yellow-brown & orange-brown, damp, SP-SC	85
87			SAND with clay, orange-brown, SP-SC	87
			SAND, light yellow, fine-grained, minor clay, SP	

Notes and Additional Data/Info. (Specify if Other Materials Used):

TEST BORING FIELD REPORT

Boring Number: GEW-1

Page 3 of 3

Project Name: Citrus County Central Remediation

Project Number: 03860-038-01

Depth	SPT Data			Description of Soil	Well Details
	ASTM D1586	per 6"			
87		N			
90				SAND, light yellow, fine-grained, SP	
95				SAND, light yellow, fine-grained, SP	
100				Boring over-drilled to ~ 104 feet to allow for cave-in, well set at 100 feet	
105					
110					
115					
120					
125					
130					
132					

Notes and Additional Data/Info. (Specify if Other Materials Used):

TEST BORING FIELD REPORT

Project Name: Citrus County Central Remediation
 Project Number: 03860-038-01
 Drilling Contractor: Huss
 Drilling/Sampling Methods: Hollow-stem auger

Boring Number: GEW-2

Page 1 of 2

Test Boring Completed: 3/9/2010, Well Completed: 3/9/2010

Jones Edmunds Field Geologist: M. Hays

Elevations: Ground: 112.25 ft NGVD 29 (Surveyed by Citrus County)

Depth	SPT Data		Description of Soil	Well Details
	ASTM D1586 per 6"	N		
0			SANDY CLAY, yellow & red-brown, CL	
			CLAYEY SAND, yellow-brown, SC	
5				5
			SAND with clay, light yellow, fine-grained, damp, SP-SC	
			SAND, very light yellow, fine-grained, SP	
10				10
			SAND, very light yellow/white, fine-grained, SP	
15				15
			SAND, very light yellow/white, fine-grained, minor clay, SP	
20				20
			SAND, very light yellow to light yellow, fine-grained, SP	
25				25
			SAND, very light yellow, fine-grained, damp, SP	
30				30
			SAND with clay, yellow, fine-grained, damp, SP-SC	
35				35
			SAND with clay, orange-brown, damp, SP-SC	
40				40
			SAND with clay, orange-brown, damp, SP-SC	
42				42

Notes and Additional Data/Info. (Specify if Other Materials Used):

Total Well Depth = 60 ft bls

Well Casing/Pipe: Diam. and Type = 2-in Sch. 40 PVC; Solid Length = 50 ft bls; Screen = 10 ft, 0.020-in Gravel Filter Pack = 9.50-lb Bags; Type = Pea Gravel; Placed from 60 to 48 ft bls (measured)

Annular Seal: Type = Fine Sand/Bentonite; Thickness = 2/2 ft; Placed from 48 to 44 ft bls (measured)

Grout = 10 94-lb Bags of Cement Grout to Surface;

JONES EDMUNDS
 ENGINEERS | ARCHITECTS | SCIENTISTS

TEST BORING FIELD REPORT

Boring Number: GEW-2

Page 2 of 2

Project Name: Citrus County Central Remediation

Project Number: 03860-038-01

Depth	SPT Data		Description of Soil	Well Details
	ASTM D1586 per 6"	N		
42				
45			SAND with clay, yellow-brown, SP-SC	
			SAND with clay, yellow-brown, SP-SC/SC	
50			SAND with clay, yellow-brown, SP-SC/SC	
55			SAND with clay, light yellow-brown, SP-SC	
60			SAND with clay, orange-brown, SP-SC/SC	
			Boring overdrilled to ~ 62 feet	
65				
70				
75				
80				
85				
87				

Notes and Additional Data/Info. (Specify if Other Materials Used):

TEST BORING FIELD REPORT

Boring Number: GEW-3

Page 1 of 3

Project Name: Citrus County Central Remediation

Test Boring Completed: 3/8/2010, Well Completed: 3/8/2010

Project Number: 03860-038-01

Jones Edmunds Field Geologist: M. Hays

Drilling Contractor: Huss

Elevations: Ground: 112.58 ft NGVD 29 (Surveyed by Citrus County)

Drilling/Sampling Methods: Hollow-stem auger

Depth	SPT Data		Description of Soil	Well Details
	ASTM D1586	N		
0	per 6"		SANDY CLAY, red-brown, dry, CL	
5			CLAYEY SAND, orange-brown, SC	5
10			SAND with clay, yellow-brown, SP-SC	10
15			SAND, light yellow, fine-grained, damp, SP	15
20			SAND, very light yellow/white, very fine-grained, SP	20
25			SAND, white, very fine-grained, damp, SP	25
30			SAND, white/very light yellow, very fine-grained, damp, SP	30
35			SAND, light yellow-brown, fine-grained, damp, SP	35
40			SAND, light yellow-brown, fine-grained, damp, SP	40
42			SAND, very light yellow, fine-grained, damp, SP	42

Notes and Additional Data/Info. (Specify if Other Materials Used):

Total Well Depth = 100 ft bls

Well Casing/Pipe: Diam. and Type = 2-in Sch. 40 PVC; Solid Length = 90 ft bls; Screen = 10 ft, 0.020-in

Gravel Filter Pack = 6.50-lb Bags; Type = Pea Gravel; Placed from 100 to 88 ft bls (measured)

Annular Seal: Type = Fine Sand/Bentonite; Thickness = 1/3 ft; Placed from 88 to 84 ft bls (measured)

Grout = 20 94-lb Bags of Cement Grout to Surface;

JONES EDMUNDS
ENGINEERS | ARCHITECTS | SCIENTISTS

TEST BORING FIELD REPORT

Boring Number: GEW-3

Page 2 of 3

Project Name: Citrus County Central Remediation

Project Number: 03860-038-01

Depth	SPT Data		Description of Soil	Well Details
	ASTM D1586 per 6"	N		
42				
45			SAND, white to light yellow-brown to white, fine-grained, damp, SP	45
50			SAND with silt, orange-brown, fine-grained, SP-SM	50
55			SAND, white/very light yellow, fine-grained, damp, SP	55
60			SAND, orange-brown to white, fine-grained, SP	60
65			CLAYEY SAND, red-brown, damp, SC	65
70			SAND, light yellow, damp, SP	70
75			SAND with clay, orange-brown, SP-SC	75
80			SAND, light yellow, fine-grained, SP	80
85			SAND with clay, yellow-brown & orange-brown, damp, SP-SC	85
87			SAND with clay, orange-brown, SP-SC	87
			SAND with clay, orange-brown, SP-SC	
			SAND with clay, orange-brown, SP-SC	
			SAND, light yellow, fine-grained, minor clay, SP	

Notes and Additional Data/Info. (Specify if Other Materials Used):

TEST BORING FIELD REPORT

Boring Number: GEW-3

Page 3 of 3

Project Name: Citrus County Central Remediation

Project Number: 03860-038-01

Depth	SPT Data		Description of Soil	Well Details
	ASTM D1586 per 6"	N		
87				
90			SAND, light yellow, fine-grained, SP	
95			SAND, light yellow, fine-grained, SP	
100			Boring over-drilled to ~ 104 feet to allow for cave-in, well set at 100 feet	
105				
110				
115				
120				
125				
130				
132				

Notes and Additional Data/Info. (Specify if Other Materials Used):

TEST BORING FIELD REPORT

Project Name: Citrus County Central Remediation
 Project Number: 03860-038-01
 Drilling Contractor: Huss
 Drilling/Sampling Methods: Hollow-stem auger

Boring Number: GEW-4

Page 1 of 2

Test Boring Completed: 3/11/2010, Well Completed: 3/11/2010

Jones Edmunds Field Geologist: M. Hays

Elevations: Ground: 111.267 ft NGVD 29 (Surveyed by Citrus County)

Depth	SPT Data ASTM D1586		Description of Soil	Well Details
	per 6"	N		
0			SILTY SAND, dark gray/black, fill	
			SANDY CLAY, orange-brown, CL	
			CLAYEY SAND, orange/red-brown, SC	
5			CLAYEY SAND, red-brown, SC	5
10			SAND with clay, light orange, fine-grained, SP-SC	10
			SAND, light orange, fine-grained, SP	
15			SAND, light orange to light yellow, fine-grained, SP	15
20			SAND, light yellow, fine-grained, SP	20
25			SAND, very light yellow, fine-grained, SP, damp	25
30			SAND, very light yellow/white, fine-grained, SP, damp	30
35			SAND, white, fine-grained, SP, dry	35
40			SAND, white to light yellow, fine-grained, SP, damp	40
42				42

Notes and Additional Data/Info. (Specify if Other Materials Used):

Total Well Depth = 60 ft bls

Well Casing/Pipe: Diam. and Type = 2-in Sch. 40 PVC; Solid Length = 50 ft bls; Screen = 10 ft, 0.020-in Gravel Filter Pack = 9 50-lb Bags; Type = Pea Gravel; Placed from .60 to .48 ft bls (measured)

Annular Seal: Type = Fine Sand/Bentonite; Thickness = 2/2 ft; Placed from 48 to 44 ft bls (measured)

Grout = 10 94-lb Bags of Cement Grout to Surface;

JONES EDMUNDS
 ENGINEERS | ARCHITECTS | SCIENTISTS

TEST BORING FIELD REPORT

Boring Number: GEW-4

Page 2 of 2

Project Name: Citrus County Central Remediation

Project Number: 03860-038-01

Depth	SPT Data			Description of Soil		Well Details
	ASTM D1586 per 6"	N				
42						
45				SAND, very light yellow, fine-grained, SP, damp	45	
50				SAND, light yellow to white, very fine-grained, SP, dry	50	
55				SAND, white, fine-grained, SP	55	
60				SAND, white, fine-grained, SP	60	
65				Boring overdrilled to ~ 62 feet	65	
70					70	
75					75	
80					80	
85					85	
87					87	

Notes and Additional Data/Info. (Specify if Other Materials Used):

TEST BORING FIELD REPORT

Project Name: Citrus County Central Remediation
 Project Number: 03860-038-01
 Drilling Contractor: Huss
 Drilling/Sampling Methods: Hollow-stem auger

Boring Number: GEW-5

Page 1 of 3

Test Boring Completed: 3/10/2010, Well Completed: 3/10/2010
 Jones Edmunds Field Geologist: M. Hays
 Elevations: Ground: 110.531 ft NGVD 29 (Surveyed by Citrus County)

Depth	SPT Data		Description of Soil	Well Details
	ASTM D1586	per 6" N		
0			CLAYEY SAND, orange-brown, SC	
5			SAND with clay, orange-brown, fine-grained, SP-SC	
10			SAND, orange-brown to very light yellow, fine-grained, minor clay, SP-SC to SP	
15			SAND, white, fine-grained, SP, damp	
20			SAND, white, fine-grained, SP	
25			SAND, white/very light yellow, fine-grained, SP	
30			SAND, light yellow, fine-grained, SP, damp	
35			SAND, light yellow-brown, fine-grained, SP	
40			SAND, light yellow, fine-grained, SP	
42				

Notes and Additional Data/Info. (Specify if Other Materials Used):

Total Well Depth = 100 ft bls

Well Casing/Pipe: Diam. and Type = 2-in Sch. 40 PVC; Solid Length = 90 ft bls; Screen = 10 ft, 0.020-in Gravel Filter Pack = 6 50-lb Bags; Type = Pea Gravel; Placed from 100 to 88 ft bls (measured)

Annular Seal: Type = Fine Sand/Bentonite; Thickness = 1/3 ft; Placed from 88 to 84 ft bls (measured)

Grout = 20 94-lb Bags of Cement Grout to Surface;

JONES EDMUNDS
 ENGINEERS | ARCHITECTS | SCIENTISTS

TEST BORING FIELD REPORT

Boring Number: GEW-5

Page 2 of 3

Project Name: Citrus County Central Remediation

Project Number: 03860-038-01

Depth	SPT Data		Description of Soil	Well Details
	ASTM D1586	N		
42	per 6"	N		
45			SAND, light yellow, fine-grained, SP	45
50			SAND, light yellow, fine-grained, SP	50
55			SAND, light yellow, fine-grained, SP	55
60			SAND with clay, light orange-brown, fine-grained, SP-SC	60
65			SAND with clay, orange-brown, SP-SC	65
70			SAND with clay, orange-brown, SP-SC	70
75			SAND, very light yellow, fine-grained, SP	75
80			SAND with clay, orange-brown, SP-SC	80
85			SAND, light yellow & orange, fine-grained, trace clay, SP	85
87			SAND, orange-brown, fine-grained, trace clay, SP	87

Notes and Additional Data/Info. (Specify if Other Materials Used):

TEST BORING FIELD REPORT

Boring Number: GEW-5

Page 3 of 3

Project Name: Citrus County Central Remediation

Project Number: 03860-038-01

Depth	SPT Data			Description of Soil		Well Details
	ASTM D1586 per 6"	N				
87						
90				SAND with clay, light orange, fine-grained, SP-SC	90	
95				SAND, light orange, fine-grained, trace clay, SP	95	
100				SAND, light orange, fine-grained, trace clay, SP Boring over-drilled to ~ 104 feet to allow for cave-in, well set at 100 feet	100	
105					105	
110					110	
115					115	
120					120	
125					125	
130					130	
132					132	

Notes and Additional Data/Info. (Specify if Other Materials Used):