

RECEIVED

DEC 28 2007

DEPT of ENV PROTECTION
WEST PALM BEACH

CONTINGENCY PLAN & EMERGENCY PROCEDURES

**PERMA-FIX OF FORT LAUDERDALE, INC.
3701 S.W. 47th Avenue, Suite 109
Davie, FL 33314**

12/20/07

(Revision 1)

prepared by

Victor L. San Agustin

Director of Compliance

Perma-Fix Environmental Services, Inc.

Table of Contents

RECEIVED

Page No.

1.0	Introduction	DEC 28 2007	3
1.1	Purpose	DEPT of ENV PROTECTION	3
1.2	Scope	WEST PALM BEACH	3
1.3	Responsibility		3
2.0	General Information		4
3.0	Implementation of Contingency Plan		4
4.0	Arrangement with Local Emergency Response Agencies		4
5.0	Copies of Contingency Plan		4
6.0	Amendments to Contingency Plan		4
7.0	Emergency Coordinators		5
8.0	Emergency Procedures		5
8.1	Identifying Releases and Hazards		5
8.2	Notification and Reporting		5
8.3	Emergency Procedures		6
8.4	Emergency Equipment		7
8.5	Evacuation of Facility		7
9.0	Recordkeeping		7

Appendices

Appendix A -	Correspondence with Local Authorities	9
Appendix B -	Phone Number of Local Authority, Agency, etc...	10
Appendix C -	Emergency Equipment	12
Appendix D -	Evacuation Routes	14
Appendix E -	Site Location Map	15
Appendix F -	Material Inventory List	16
Appendix G -	Material Safety Data Sheets	18

1.0 Introduction

1.1 Purpose

The purpose of this plan is to minimize hazards to human environment from fire, explosion, and/or any unplanned hazardous materials or waste to the environment. This plan is implemented immediately whenever there is a fire, explosion, or release of material / waste that could threaten human health or the environment.

This document establishes a Contingency Plan and Emergency Response Plan that complies with the following permits and licenses.

- a. FDEP Hazardous Waste Transporter No. 1000000000
- b. FDEP Used Oil Processing Facility No. 1000000000
- c. EPD Hazardous Materials Storage Facility No. 1000000000
- d. EPD Hazardous Materials Transfer Facility No. 1000000000
- e. EPD Industrial Sludge Hauler No. 6004

1.2 Scope

This contingency plan and emergency procedures will apply to all activities at the facility. This plan is developed in accordance with 40 CFR 279.52 (b) (1) and 62-730.171(2)(a) and 27-306(b)(8), 27-306(b)(9), and 27-306(b)(10).

- Code of Federal Regulations:
- Florida Administrative Code:
- Broward County Codes:

1.3 Responsibilities

The General Manager or his designee is responsible for the development, implementation, and maintenance of this plan. The General Manager or his/her designee is responsible for the implementation of this plan in the event of an emergency release of material/waste. The General Manager or his/her designee is responsible for ensuring that all employees are familiar with the content of this plan and are trained in the use of the plan, if needed.

The General Manager is responsible for ensuring that the plan is accessible to all employees. In the absence of the General Manager, the Operations Manager is responsible for implementing the plan in the event of an emergency and/or accidental release of material/waste.

All plant employees are responsible for reading, understanding, and implementing this plan in the event of an emergency and/or accidental release of material / waste.

2.0 General Information

Facility Name: Perma-Fix of Fort Lauderdale, Inc.
Facility Location: 3670 SW 47th Avenue
Davie, FL 33314
Office Address: 3701 SW 47th Avenue, Suite 109
Davie, FL 33314
EPA ID Number: FLD 981 018 773
Facility Activities: Used Oil Processing, 10 Day Hazardous Waste Transfer Facility, Biomedical Waste Storage Facility

3.0 Implementation of Contingency Plan

The provisions of this plan will be carried out immediately whenever there is a fire, explosion, or sudden release of hazardous material / waste to the environment.

4.0 Arrangement with Local Emergency Response Agencies

Arrangements with local authorities have been established by providing the Davie Police Department, Davie Fire Department, Plantation General Hospital, and Broward General Hospital with a copy of this plan and a letter requesting their assistance in the event of an emergency. Refer to Appendix A for a copy of all correspondences. In the event of a revision of this plan, a copy will be submitted to the above referenced agencies.

5.0 Copies of the Contingency Plan

A copy of the Contingency Plan and all associated revisions will be maintained at the facility and the office. A copy of the plan will be submitted to the Davie Police Department, Davie Fire Department, Plantation General Hospital, and Broward General Hospital. Additional copies of this plan are available from the General Manager.

6.0 Amendments to Contingency Plan

This plan will be revised, if necessary, whenever:

- a. Applicable ordinances or regulations are revised;

- b. The plan fails in an emergency;
- c. The facility changes in a manner that materially increases the potential for fires, explosions, or the release of hazardous materials / waste, or changes the response necessary in an emergency,
- d. The Emergency Coordinators change,
- e. The list of emergency equipment changes.

In the event of revisions to this plan, a revised copy will be submitted to the authorities identified in Section 4.0. A revised copy of this plan will also be maintained at the facility and office.

7.0 Emergency Coordinators

The following identifies the facility's primary and alternate emergency coordinators (EC):

Primary: John P. "Shawn" Lennon, Jr.
General Manager
(954)583-3795 (office)
(954)296-3873 (cell)

Alternate: Steven T. Swett
Operations Manager
(954)791-1327 (office)
(954)296-3871 (cell)

At all times, there will be at least one EC either at the facility or on call who is available to respond to an emergency by reaching the facility within a short period of time and has the responsibility of coordinating all emergency response activities. The EC will be familiar with all aspects of this plan, all operations, and activities at the facility, the location and characteristics of the waste handled, the location of all records within the facility, and the facility layout. Additionally, the EC has the authority to commit the resources needed to carry out this plan.

8.0 Emergency Procedures

8.1 Identifying Releases and Hazards

Whenever there is a release, fire, or explosion, the EC will immediately identify the characteristics, exact source, amount, and a real extent of any released material / waste. The EC will do this by observation or review of facility records / manifests and, if necessary, by chemical analyses.

Concurrently, the EC will assess possible hazards to human health or the environment that may result from a release, fire, or explosion. This assessment will consider both direct and indirect effects of a release, fire, or explosion such as toxic gases, or the effect of any hazardous surface water runoff from water or chemical agents used to control the situation.

8.2 Notification and Reporting

Whenever there is an imminent or actual emergency, the EC or his designee, will immediately activate the facility communication system and notify all facility personnel. The facility communication system includes a telephone, a two-way radio system, and horn signals. The EC will also notify the following agencies as indicated:

- a. Davie Fire Dept. via 954-693-8212(Immediately)
- b. EPD via 954/519-1400 **(within 24 hours)**
- c. Florida Dept. of Environmental Protection via 561/681-6600 **(within 24 hours)**
- d. Florida Bureau of Disaster Preparedness via 850/413-9911 or 800/320-0519 **(within 24 hours)**

Notification of additional local authorities listed in Appendix B may be conducted, as deemed necessary by the EC.

If the EC determined that the facility has had a release, fire, or explosion which could threaten human health or the environment outside the facility boundaries, he will report his findings as follows:

- a. If the EC's assessment indicated that the evacuation of the local area may be advisable, he will notify the local authorities identified above. Additional assistance from local authorities listed in Appendix B may be obtained as deemed necessary by the EC. The EC will be available to assist local authorities in deciding whether evacuation of the immediate area is needed.
- b. The EC will immediately notify the National Response Center at 800/424-8802 and report the following information:
 - i) Name and telephone number;
 - ii) Name and address of facility;
 - iii) Time and type of accident;
 - iv) Name and quantity of material involved and to the extent known;
 - v) Possible hazards to human health and the environment, outside the facility boundaries.

8.3 Emergency Procedures

During an emergency, the EC will take all reasonable measures necessary to ensure that fires, explosions, and releases do not occur, or spread to other hazardous material / waste at the facility. These measures may include stopping operation, collecting and containing released material / waste, and removing or isolating containers. If the facility stops operating, the EC will monitor for leaks, pressure build up, or rupture in valves, pipes, etc...

After an emergency, the EC will provide for treatment, storage, and disposal of recovered material / waste including contaminated soil, water, or other material. The treatment, storage, and disposal of recovered material / waste will be conducted in accordance with applicable local, state, and federal regulations. Waste management companies utilized in the treatment, storage, and disposal of recovered material / waste will be chosen at the EC's discretion. The EC will ensure that, in the affected areas of the facility, no material/waste is incompatible with the released materials until clean-up procedures are completed. All emergency equipment listed in this plan (Appendix C) will be cleaned, if necessary, and fit for its intended use before operations are resumed.

8.4 Emergency Equipment

A list of emergency equipment available on site is contained in Appendix C.

8.5 Evacuation of Facility

The EC is responsible for determining which emergencies require evacuation. The EC may deviate from the evacuation procedures identified below if necessary to bring the situation under control. An evacuation route map and a site location map are illustrated in Appendix D and E respectively. In the event of a plant evacuation, the following steps will be taken:

- a. The signal for evacuation will be given which consists of three long blasts of the air horn. The two-way radio system will be used to notify/divert incoming drivers.
- b. All vehicle traffic within the Plant will cease. Visitors, contractors, and customers will no longer be allowed in the facility.
- c. All personnel, visitors, contractors, and customers will immediately leave through the main gate.
- d. No persons will be allowed to enter the plant without authorization from the EC and senior fire department representative.
- e. All persons evacuating the plant will assemble southwest of the plant on the west side of SW 47th Avenue at a point chosen by the EC. The assembly point will be within the vicinity of the location identified on the evacuation route map. (Appendix D).
- f. The EC will conduct a head count to confirm that all persons within the facility are present. Any person not accounted for will be immediately reported to the senior fire department representative.
- g. After the emergency, no personnel will be allowed to re-enter the plant until authorization is obtained from the senior fire department representative and the EC.

9.0 Recordkeeping

The EC will submit a written closure plan to the Broward County Department of Planning and Environmental Protection within 5 days of the incident.

The EC will notify the Florida Department of Environmental Protection in writing before operations resume:

- a. In the affected area(s) of the facility, no material/waste is incompatible with the released material, and
- b. All emergency equipment listed in this plan is clean and fit for its intended use.

The EC will document in the facility's operating record the time, date, and details of any incident that required the implementation of this plan. Within 15 days after the incident, the EC will submit a written report on the incident to the Florida Department of Environmental protection. The report will include the following information:

- a. Name, address, and telephone number of the owner/operator.
- b. Name, address, and telephone number of the facility,
- c. Date, time, and type of incident,
- d. Name and quantity of materials involved,
- e. The extent of injuries, if any,
- f. An assessment of actual or potential hazards to human health and the environment, if any,
- g. Estimated quantity and disposition of recovered material resulting from the incident.

Appendix A
Correspondence with Local Authorities



Head Administrator
Plantation General Hospital
401 NW 42 Ave
Plantation, Fl. 33317

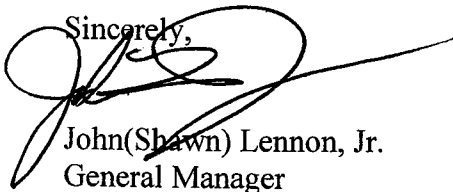
12/21/07

Dear Sir:

Please find enclosed a revised Contingency Plan and Emergency Procedures for our facility in Davie. We are submitting these revisions in accordance 40 CFR 265.53(b) of the Resource and Recovery Act (RCRA). The document contains useful information about the Perma-Fix Facility in Davie, Florida.

Should you have any questions or concerns please feel free to contact me at 954-583-3795.

Sincerely,

A handwritten signature in black ink, appearing to read "John(Shawn) Lennon, Jr.", is written over the word "Sincerely,". The signature is fluid and cursive, with a large loop at the beginning and end.

John(Shawn) Lennon, Jr.
General Manager



Head Administrator
Broward General Hospital
1600 S. Andrews Ave.
Ft. Lauderdale, Fl. 33316

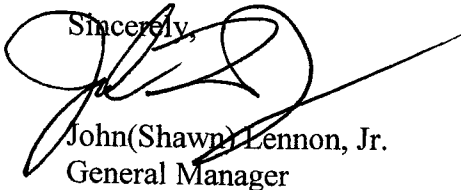
12/21/07

Dear Sir:

Please find enclosed a revised Contingency Plan and Emergency Procedures for our facility in Davie. We are submitting these revisions in accordance 40 CFR 265.53(b) of the Resource and Recovery Act (RCRA). The document contains useful information about the Perma-Fix Facility in Davie, Florida.

Should you have any questions or concerns please feel free to contact me at 954-583-3795.

Sincerely,

A handwritten signature in black ink, appearing to read "John Lennon, Jr.", is written over the word "Sincerely,". The signature is stylized and includes a long horizontal stroke extending to the right.

John (Shawn) Lennon, Jr.
General Manager

11



Town of Davie Fire Chief
Davie Fire Dept.
6901 Orange Dr.
Davie, Fl. 33314

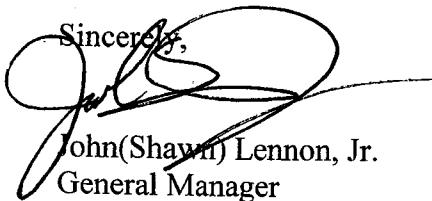
12/21/07

Dear Sir:

Please find enclosed a revised Contingency Plan and Emergency Procedures for our facility in Davie. We are submitting these revisions in accordance 40 CFR 265.53(b) of the Resource and Recovery Act (RCRA). The document contains useful information about the Perma-Fix Facility in Davie, Florida.

Should you have any questions or concerns please feel free to contact me at 954-583-3795.

Sincerely,

A handwritten signature in black ink, appearing to read "John Lennon", is written over the word "Sincerely,". The signature is fluid and cursive, with a long horizontal stroke extending to the right.

John(Shawn) Lennon, Jr.
General Manager



Chief of Police
Davie Police Dept.
1230 Nob Hill Rd.
Davie, FL. 33324

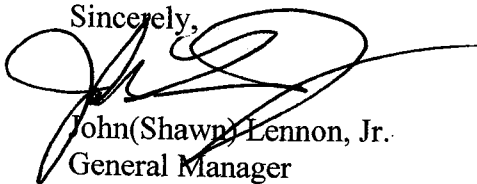
12/21/07

Dear Sir:

Please find enclosed a revised Contingency Plan and Emergency Procedures for our facility in Davie. We are submitting these revisions in accordance 40 CFR 265.53(b) of the Resource and Recovery Act (RCRA). The document contains useful information about the Perma-Fix Facility in Davie, Florida.

Should you have any questions or concerns please feel free to contact me at 954-583-3795.

Sincerely,



John (Shawn) Lennon, Jr.
General Manager



12/21/07

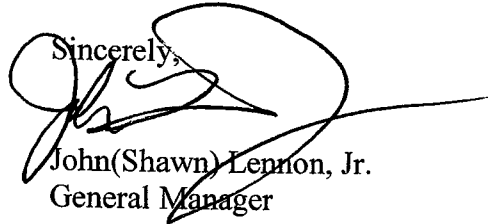
Florida Dept. of Environmental Protection
400 N. Congress Ave. #200
West Palm Bch FL. 33401

To Whom It May Concern:

Please find enclosed a revised Contingency Plan and Emergency Procedures for our facility in Davie. We are submitting these revisions in accordance 40 CFR 265.53(b) of the Resource and Recovery Act (RCRA). The document contains useful information about the Perma-Fix Facility in Davie, Florida.

Should you have any questions or concerns please feel free to contact me at 954-583-3795.

Sincerely,

A handwritten signature in black ink, appearing to read "John (Shawn) Lennon, Jr.", is written over the typed name. The signature is fluid and cursive, with a long horizontal stroke extending to the right.

John (Shawn) Lennon, Jr.
General Manager

-

Appendix B
Phone Numbers of Local Authorities, Agencies, Etc...

Appendix B

Phone Numbers of Local Authorities, Agencies, Etc.

Local Authority / Agency	Phone Number	Contact Period
Davie Fire Department	954/693-8212	Immediately
Davie Police Department	954/693-8200	Immediately
Emergency Medical Service	911	As Needed
Broward County EPD	954/519-1400	24 hours
Florida DEP	561/681-6600	24 hours
Florida Bureau of Disaster Preparedness	850/413-9911	24 hours
National Response Center	800/424-8802	As Needed
Plantation General Hospital (Primary)	954/587-5010	As Needed
Broward General Hospital (2ndary)	954/355-4400	As Needed
Primary Emergency Coordinator John P. "Shawn" Lennon, Jr. General Manager	954/583-3795 (office) 954/296-3873 (cell)	
Alternate Emergency Coordinator Steven T. Swett Operations Manager	954/583-3795 (office) 954/296-3871 (cell)	

Appendix C
Facility Emergency Equipment

Appendix C

Facility Emergency Equipment

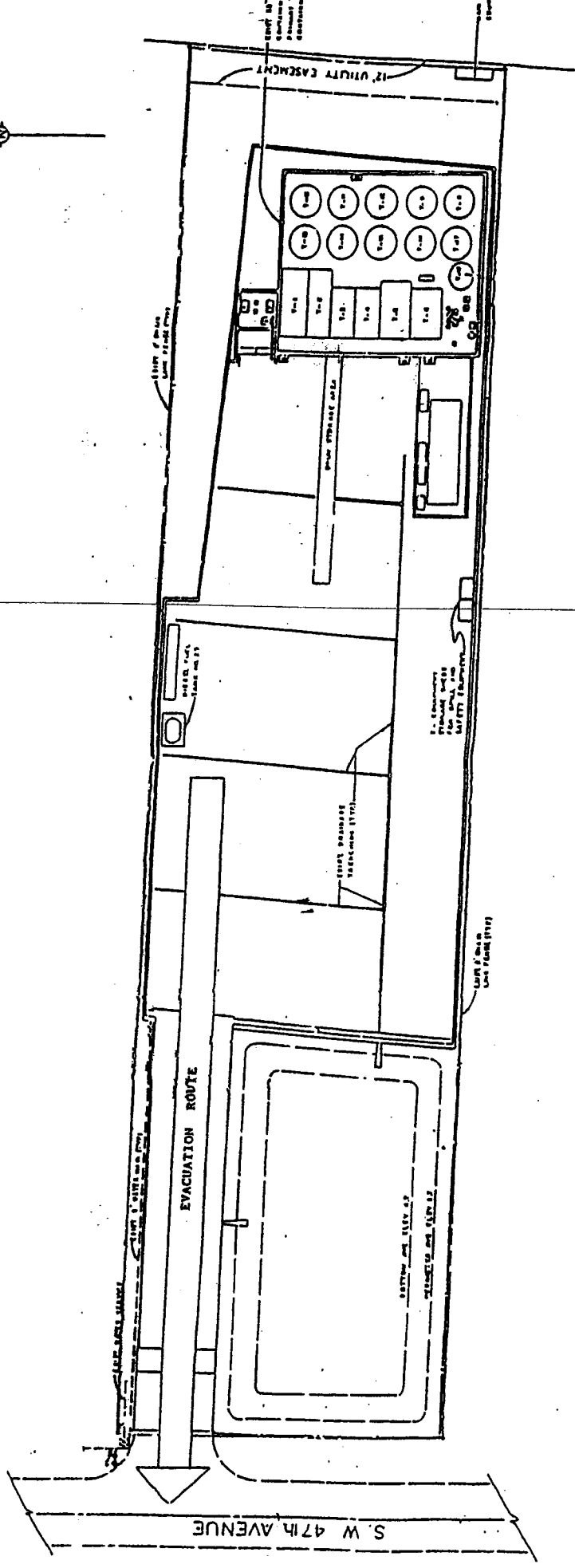
Equipment	Quantity	Type
Communication System	2	Telephone, Radio
Fire Alarm	1	Horn
Fire Hydrants	2	Water
Fire Extinguisher	5	ABC (dry chemical)
Safety Shower	2	Water
Eye Wash	2	Water
Respirators	2	Full face with cartridges
Scott Air Packs	2	30 minute
Spill Pads	1 roll	Synthetic
Spill Kits	7 drums	Clay
Empty Drums	25 to 100	1A1 Steel
Spill Pumps	2	Diaphragm
First Aid Kits	1	Industrial
Pressure Washer	3	2,500 psi

Refer to the enclosed referenced facility map for the location of the above referenced equipment.

Appendix D
Evacuation Route Map

=

EVACUATION ROUTE



S. W 47th AVENUE

EVACUATION ROUTE

12 UTILITY CASKS

LIMIT OF AREA

WATER TANK

STAIR WARDEN STATION

STAIR WARDEN STATION

LIMIT OF AREA

0 20 40 60 80 100

Appendix E
Site Location Map

—

PLANTATION

W BROWARD BLVD



PETERS RD

DAVIE BLVD

PORT EVERGLADES EXPWY



CAKES RD

DAVIE

Perma-Fix of Ft Lauderdale, Inc
3670 SW 47th AVENUE
Davie, FL 33314
Ph: (305) 583-3795

SW 47th AV

FLORIDA'S
TURNPIKE

SW 45th ST

GRIFFIN RD



DAVIE RD
SW 64th AV

FLORIDA'S
TURNPIKE

SEMINOLE DR

RD

RAVENSWOOD
RD

STIRLING RD



SW 40th AV

HOLLYWOOD

Appendix F
Material Inventory List

=

Appendix F

Material Inventory List

Product	Time On-Site	Average Quantity
No. 5 Fuel Oil	Continuous	50,000 gallons
No. 2 Fuel Oil	Continuous	8,000 gallons
Diesel Fuel	Continuous	1,000 gallons
Paint & Paint Thinners	10 Days or Less	1,500 gallons

Note: Refer to attached material safety data sheet for information about the above referenced products.

Appendix G
Material Safety Data Sheets

Product Name: ALL CLIMATE MOTOR OIL SAE 10W40

QUADREX ENVIRONMENTAL
1940 NW 67TH PLACE
GAINESVILLE, FL 32606-1649

ATTN: LORI MOOD

08 92 052 8164829-597

Date Sheet No: 0164091-010.000
Prepared: 11/07/91
Supersedes: 04/23/90

PRODUCT:
INVOICE: REGST
INVOICE DATE: 05/28/92
TO:

SECTION 2: PRODUCT IDENTIFICATION

General or Generic ID: PETROLEUM BASED-LUBRICATING OIL

DOT Hazard Classification: NOT REGULATED

SECTION 3: COMPONENTS

IF PRESENT, IARC, NTP AND OSHA CARCINOGENS AND CHEMICALS SUBJECT TO THE REPORTING REQUIREMENTS OF SARA TITLE III SECTION 313 ARE IDENTIFIED IN THIS SECTION. SEE DEFINITION PAGE FOR CLARIFICATION

INGREDIENT	% (by WT)	PEL	TLV	Note
DETERGENT/ DISPERSANT ENGINE OIL PACKAGE	5-10			(1)
ALIPHATIC PETROLEUM DISTILLATES CAS #: 64742-65-0	40-55	5 MG/M3	5 MG/M3	(2)
PETROLEUM OIL CAS #: 64742-54-7	25-40	5 MG/M3	5 MG/M3	(3)

Notes:

- (1) THIS PROPRIETARY MIXTURE CONTAINS 25% ZINC COMPOUNDS. ZINC COMPOUNDS ARE REPORTABLE UNDER SECTION 313 OF SARA TITLE III.
- (2) PEL/TLV IS FOR OIL MIST. ACGIH SHORT TERM EXPOSURE LIMIT (STEL) FOR OIL MIST IS 10 MG/CUM.
- (3) PEL/TLV IS FOR OIL MIST. ACGIH SHORT TERM EXPOSURE LIMIT (STEL) FOR OIL MIST IS 10 MG/CUM.

SECTION 4: PHYSICAL DATA

Boiling Point	for PRODUCT	570.00 Deg F 298.88 Deg C 750.00 mm Hg
Vapor Pressure	NOT APPLICABLE	
Specific Vapor Density		HEAVIER THAN AIR
Specific Gravity		.877 60.00 Deg F 15.55 Deg C
Percent Volatiles	NOT APPLICABLE	
Evaporation Rate		SLOWER THAN ETHER
Appearance		LIGHT AMBER
State		LIQUID
Form		HOMO SOLN

SECTION 5: FIRE AND EXPLOSION INFORMATION

FLASH POINT(COC) > 400.0 Deg F (204.4 Deg C)

EXPLOSIVE LIMIT UNAVAILABLE

EXTINGUISHING MEDIA: REGULAR FOAM OR CARBON DIOXIDE OR DRY CHEMICAL

HAZARDOUS DECOMPOSITION PRODUCTS: MAY FORM TOXIC MATERIALS; CARBON DIOXIDE AND CARBON MONOXIDE, VARIOUS HYDROCARBONS, OXIDES OF SULFUR, NITROGEN AND PHOSPHORUS, ETC.

FIREFIGHTING PROCEDURES: WEAR SELF-CONTAINED BREATHING APPARATUS WITH A FULL FACEPIECE OPERATED IN THE POSITIVE PRESSURE DEMAND MODE WHEN FIGHTING FIRES.

WATER OR FOAM MAY CAUSE FROTHING WHICH CAN BE VIOLENT AND POSSIBLY ENDANGER THE LIFE OF THE FIREFIGHTER, ESPECIALLY IF SPRAYED INTO CONTAINERS OF HOT, BURNING LIQUID.

DENSE SMOKE MAY BE GENERATED WHILE BURNING.

SPECIAL FIRE & EXPLOSION HAZARDS: NEVER USE WELDING OR CUTTING TORCH ON OR NEAR DRUM (EVEN EMPTY) BECAUSE PRODUCT (EVEN JUST RESIDUE) CAN IGNITE EXPLOSIVELY.

HAZARD CODES: HEALTH- 1 FLAMMABILITY- 1 REACTIVITY- 0

CONTINUED ON PAGE

Post-It™ brand fax transmittal memo 7671 # of pages > 3

To: Mike Haynes	From: Jennifer
Co.: IRR	Co.: DEC
Dept.:	Phone #:
Fax #:	

SECTION IV - HEALTH HAZARD DATA

POSSIBLE EXPOSURE LEVEL: NOT ESTABLISHED FOR PRODUCT. SEE SECTION II.

EFFECTS OF ACUTE OVEREXPOSURE:

THIS PRODUCT IS NOT HAZARDOUS AS DEFINED BY OSHA (29 CFR 1910.1200) BASED ON TESTING OF SIMILAR PRODUCTS AND/OR COMPONENTS. REV. 0
EYES - NOT EXPECTED TO CAUSE IRRITATION DURING NORMAL CONDITIONS OF USE.
SKIN - PROLONGED OR REPEATED CONTACT MAY BE MILDLY IRRITATING TO SKIN AND MAY CAUSE DERMATITIS.
SWALLOWING - NOT EXPECTED TO BE TOXIC BY INGESTION. PRODUCT HAS LAXATIVE PROPERTIES AND MAY CAUSE NAUSEA, ABDOMINAL CRAMPS AND DIARRHEA.
INHALATION - NOT EXPECTED TO BE AN INHALATION HAZARD AT NORMAL ROOM TEMPERATURE. HOWEVER, IF EXPOSURES EXCEED THE PEL/TLV OF 5 MG/M3 FOR OIL MIST, THEN INHALATION OF MIST MAY RESULT IN RESPIRATORY IRRITATION AND POSSIBLE DISCOMFORT.

FIRST AID:

IF ON SKIN: THOROUGHLY WASH EXPOSED AREA WITH SOAP AND WATER. REMOVE CONTAMINATED CLOTHING. LAUNDER CONTAMINATED CLOTHING BEFORE RE-USE.
IF IN EYES: FLUSH WITH LARGE AMOUNTS OF WATER, LIFTING UPPER AND LOWER LIDS OCCASIONALLY. GET MEDICAL ATTENTION, IF IRRITATION PERSISTS.
IF SWALLOWED: DO NOT INDUCE VOMITING, KEEP PERSON WARM AND QUIET, AND GET MEDICAL ATTENTION.
IF BREATHED: IF AFFECTED, REMOVE INDIVIDUAL TO FRESH AIR. IF BREATHING IS DIFFICULT, ADMINISTER OXYGEN. IF BREATHING HAS STOPPED GIVE ARTIFICIAL RESPIRATION. KEEP PERSON WARM, QUIET AND GET MEDICAL ATTENTION.

EFFECTS OF CHRONIC OVEREXPOSURE:

NONE CURRENTLY KNOWN FOR THE PRODUCT.

CAUTION: USED MOTOR OIL HAS BEEN SHOWN TO CAUSE SKIN CANCER IN CERTAIN LABORATORY ANIMALS CONTINUALLY EXPOSED TO USED MOTOR OIL BY REPEATED APPLICATIONS. AVOID PROLONGED OR REPEATED CONTACT TO SKIN.

SECTION V - REACTIVE HAZARD DATA

HAZARDOUS POLYMERIZATION: CANNOT OCCUR

STABILITY: STABLE

INCOMPATIBILITY: AVOID CONTACT WITH: STRONG OXIDIZING AGENTS

SECTION VI - SPILL/LEAKAGE RESPONSE PROCEDURES

STEPS TO BE TAKEN IN CASE MATERIAL IS RELEASED OR SPILLED:

ALL SPILL: ABSORB LIQUID ON VERMICULITE, FLOOR ABSORBENT OR OTHER ABSORBENT MATERIAL.

WATER SPILL: PREVENT RUN-OFF TO SEWERS, STREAMS OR OTHER BODIES OF WATER. IF RUN-OFF OCCURS, NOTIFY PROPER AUTHORITIES AS REQUIRED, THAT A SPILL HAS OCCURRED.

PERSONS NOT WEARING PROTECTIVE EQUIPMENT SHOULD BE EXCLUDED FROM AREA OF SPILL UNTIL CLEAN-UP HAS BEEN COMPLETED. STOP SPILL AT SOURCE, DIKE AREA OF SPILL TO PREVENT SPREADING, PUMP LIQUID TO SALVAGE TANK. REMAINING LIQUID MAY BE TAKEN UP ON SAND, CLAY, EARTH, FLOOR ABSORBENT, OR OTHER ABSORBENT MATERIAL AND SHOVELED INTO CONTAINERS.

WASTE DISPOSAL METHOD:

SMALL SPILL: DISPOSE OF IN ACCORDANCE WITH ALL LOCAL, STATE AND FEDERAL REGULATIONS.

LARGE SPILL: DISPOSE OF IN ACCORDANCE WITH ALL LOCAL, STATE AND FEDERAL REGULATIONS.

SECTION VII - PROTECTIVE EQUIPMENT TO BE USED

RESPIRATORY PROTECTION: NOT REQUIRED UNDER NORMAL CONDITIONS OF USE. HOWEVER, IF OIL MISTS ARE GENERATED ABOVE RECOMMENDED PEL/TLV OF 5 MG/M3, THEN A NIOSH/MSHA APPROVED RESPIRATOR IS ADVISED IN ABSENCE OF PROPER ENVIRONMENTAL CONTROL. (SEE YOUR SAFETY EQUIPMENT SUPPLIER.)

VENTILATION: NOT REQUIRED UNDER NORMAL CONDITIONS OF USE. HOWEVER, IF UNUSUAL OPERATING CONDITIONS EXIST, THEN PROVIDE SUFFICIENT MECHANICAL (GENERAL AND/OR LOCAL EXHAUST) VENTILATION TO MAINTAIN EXPOSURE BELOW PEL/TLV (S).

PROTECTIVE GLOVES: NOT NORMALLY REQUIRED. HOWEVER, WEAR RESISTANT GLOVES SUCH AS NITRILE RUBBER TO PREVENT IRRITATION WHICH MAY RESULT FROM PROLONGED OR REPEATED SKIN CONTACT WITH PRODUCT.

EYE PROTECTION: NOT REQUIRED UNDER NORMAL CONDITIONS OF USE. HOWEVER, IF MISTING OR SPLASHING CONDITIONS EXIST, THEN SAFETY GLASSES OR CHEMICAL SPLASH GOGGLES ARE ADVISED.

OTHER PROTECTIVE EQUIPMENT: NORMAL WORK CLOTHING COVERING ARMS AND LEGS.

SECTION VIII - SPECIAL PRECAUTIONS OR OTHER COMMENTS

CONTAINERS OF THIS MATERIAL MAY BE HAZARDOUS WHEN EMPTIED. SINCE EMPTIED CONTAINERS RETAIN PRODUCT RESIDUES (VAPOR, LIQUID, AND/OR SOLID), ALL HAZARD PRECAUTIONS GIVEN IN THIS DATASHEET MUST BE OBSERVED.

INFORMATION ACCUMULATED HEREIN IS BELIEVED TO BE ACCURATE BUT IS NOT WARRANTED TO BE WHETHER ORIGINATING WITH THE COMPANY OR NOT. RECIPIENTS ARE ADVISED TO CONFIRM IN ADVANCE OF NEED THAT THE INFORMATION IS CURRENT, APPLICABLE, AND SUITABLE TO THEIR CIRCUMSTANCES.

SECTION IX - LABEL INFORMATION

THIS PRODUCT IS NOT HAZARDOUS AS DEFINED BY OSHA 29 CFR 1910.1200 OR FHSA 16 CFR 1500 BASED ON TESTING OF SIMILAR PRODUCTS AND/OR COMPONENTS.

HANDLING & STORAGE:

SECTION IX - LABEL INFORMATION (Continued)

DO NOT TRANSFER TO UNLABELED CONTAINER. DO NOT USE CUTTING OR WELDING TORCH ON THIS CONTAINER (EVEN EMPTY). FOR INDUSTRIAL USE ONLY. BEFORE USE, REVIEW MATERIAL SAFETY DATA SHEET FOR MORE DETAILED INFORMATION, INCLUDING CHRONIC HEALTH EFFECTS. 24-HOUR EMERGENCY NUMBER 1-800-274-5263

FIRST AID:

EYES: FLUSH THOROUGHLY WITH WATER. GET MEDICAL ATTENTION IF IRRITATION PERSISTS.

SKIN: WASH THOROUGHLY WITH SOAP AND WATER.

INGESTION: DO NOT INDUCE VOMITING. CALL A PHYSICIAN OR POISON CONTROL CENTER IMMEDIATELY. NEVER GIVE ANYTHING BY MOUTH TO AN UNCONSCIOUS PERSON.

CHRONIC INFORMATION:

OVEREXPOSURE CURRENTLY UNKNOWN FOR THE PRODUCT. CAUTION! USED MOTOR OIL HAS BEEN SHOWN TO CAUSE SKIN CANCER IN CERTAIN LABORATORY ANIMALS CONTINUALLY EXPOSED TO USED MOTOR OIL BY REPEATED APPLICATIONS. AVOID PROLONGED OR REPEATED CONTACT TO SKIN. CONTAINS: PETROLEUM OIL

*** COMPONENTS APPEAR IN SECTION II ***

LAST PAGE--SEE ATTACHMENT PAGE ENCLOSED--LAST PAGE

SECTION I. IDENTIFICATION OF PRODUCT

CHEMICAL NAME Toluene	FORMULA C ₆ H ₅ CH ₃
SYNONYM OR CROSS REFERENCE Methylbenzene	

SECTION II. HAZARDOUS INGREDIENTS

MATERIAL Toluene	NATURE OF HAZARD Flammable
---------------------	-------------------------------

SECTION III. PHYSICAL DATA

BOILING POINT 110°C	MELTING POINT -95°C
VAPOR PRESSURE (mm Hg) 21.86	SPECIFIC GRAVITY 0.868
RELATIVE DENSITY (AIR = 1) 3.1	PERCENT VOLATILE BY VOLUME (%) 100%
WATER SOLUBILITY 0.05%	EVAPORATION RATE ether = 1 greater than 1
APPEARANCE Clear, colorless liquid	

SECTION IV. FIRE AND EXPLOSION HAZARD DATA

FLASH POINT (method used) 40°F	FLAMMABLE LIMITS	
	Uel 6.7	Lel 1.4
FIRE EXTINGUISHING MEDIA CO ₂ , dry chemical, alcohol foam		

SPECIAL FIRE-FIGHTING PROCEDURES

UNUSUAL FIRE AND EXPLOSION HAZARD

SECTION V. HEALTH HAZARD

PERMISSIBLE EXPOSURE LIMIT VALUE 100 ppm (air)
HEALTH HAZARDS Vapors harmful. Avoid prolonged contact with skin.

FIRST AID PROCEDURES
Inhalation: Remove to fresh air. Skin and eyes: flush with water for at least 15 minutes. For eyes, consult a physician.