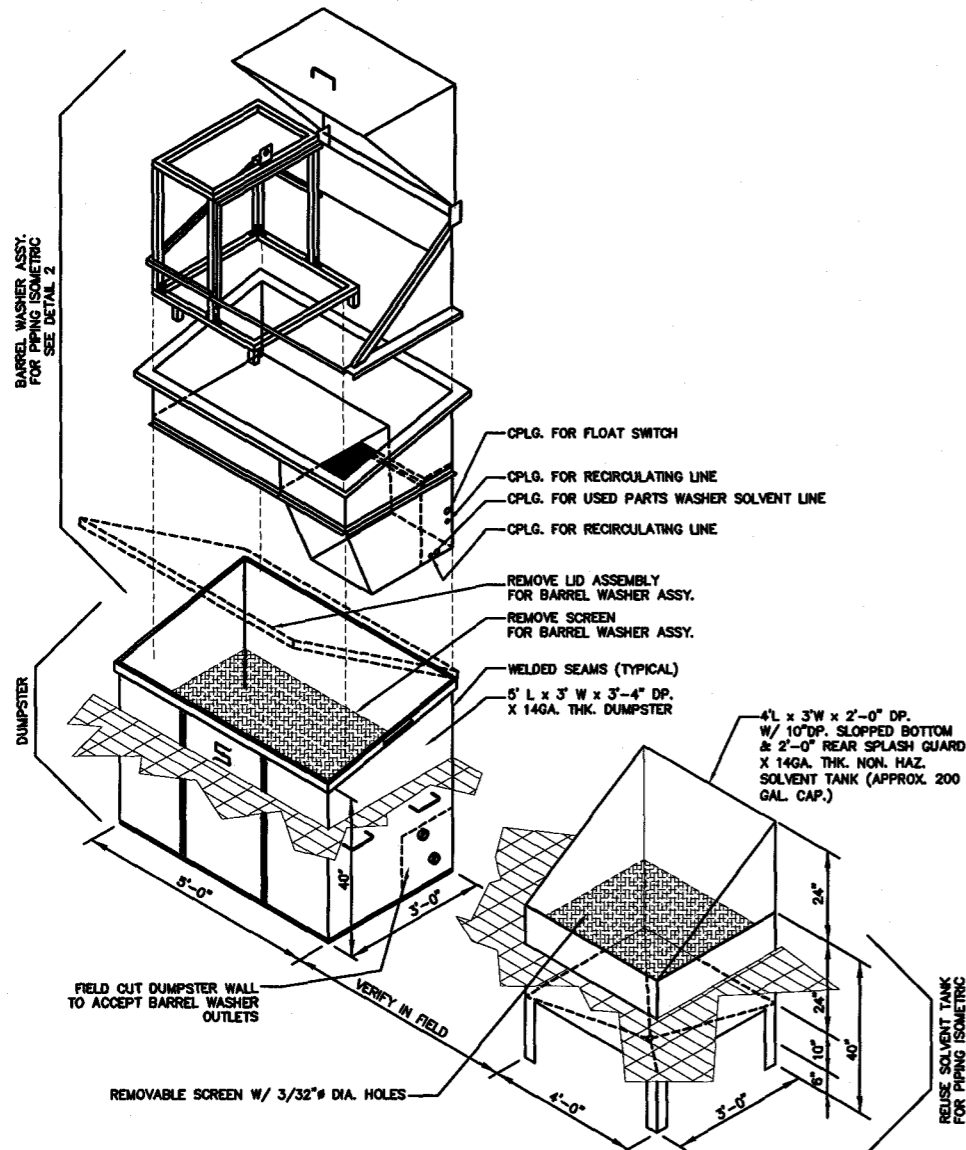
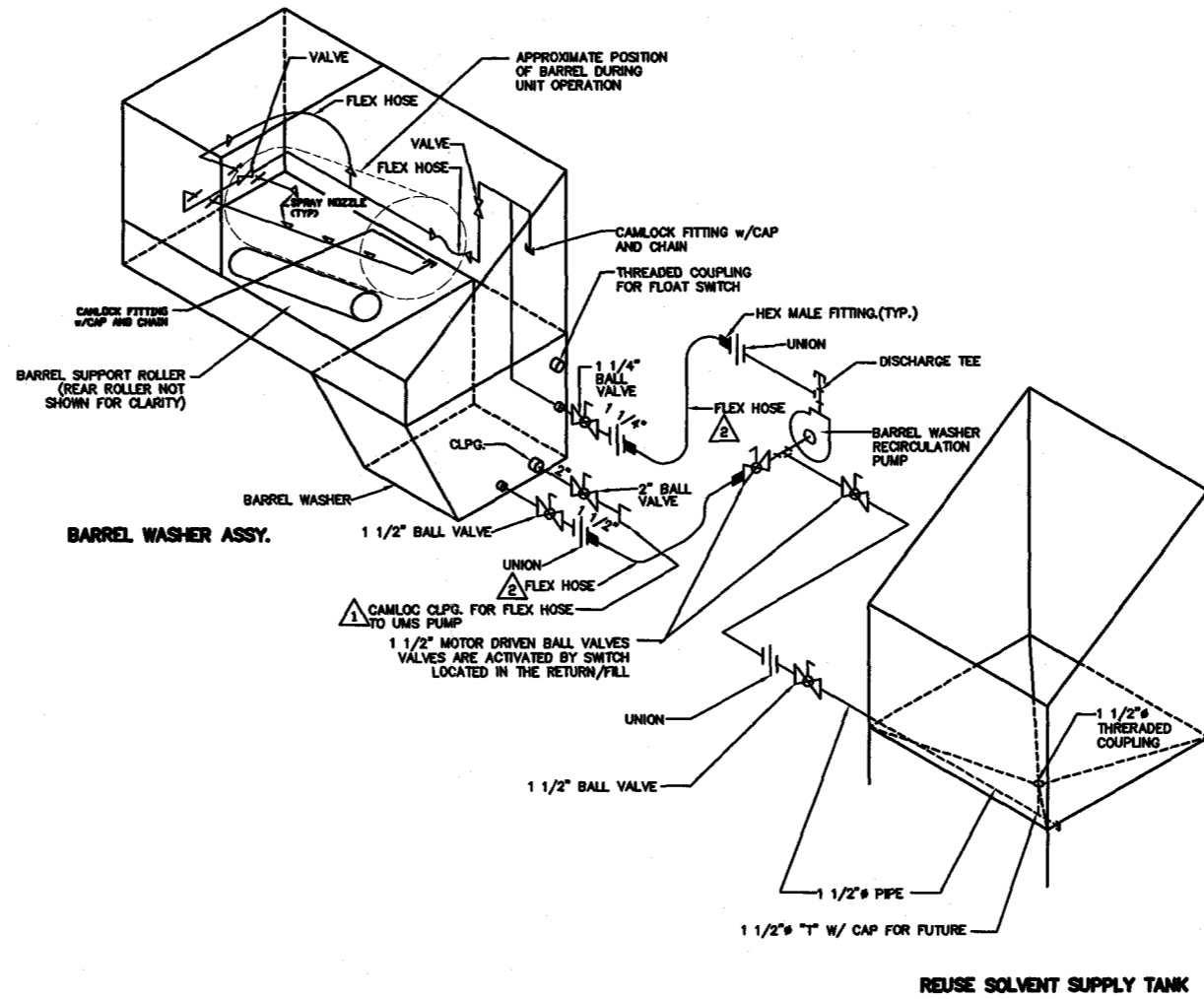


DUMPSTER/BARREL WASHER/REUSE SOLVENT TANK ASSY - DETAIL 1



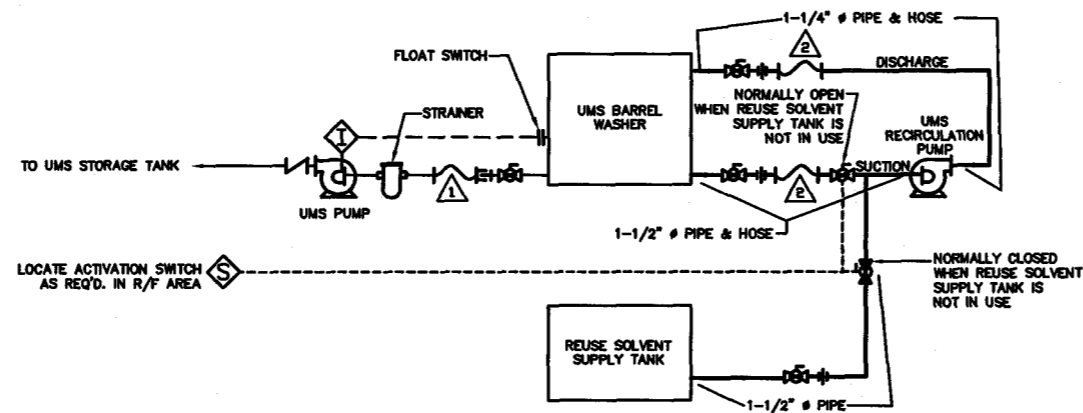
BARREL WASHER/ REUSE SOLVENT SUPPLY TANK PIPING ISOMETRIC - DETAIL 2



GENERAL NOTES

- ⚠ FLEXIBLE HOSE AND CAMLOCK FITTING BY CONTRACTOR. FLEXIBLE HOSE TO BE 2" BOAFLEX ANNULAR CORRUGATED METAL HOSE TYPE 304 STAINLESS STEEL W/STAINLESS STEEL BRAID W/ SCHED. 40 CARBON STEEL HEX MALE FITTING AT PUMP END AND CARBON STEEL SCHED. 40 CAM-LOCK COUPLER AT THE DRUM WASHER END. HOSE LENGTH MINIMUM OF 3'. LENGTH OF HOSE CONFIRMED BY CONTRACTOR.
- ⚠ RECIRC. SUCTION HOSE TO BE 1 1/2" BOAFLEX ANNULAR CORRUGATED METAL HOSE TYPE 304 STAINLESS STEEL WITH STAINLESS STEEL BRAID WITH SCHED. 40 CARBON STEEL HEX MALE FITTINGS ON EACH END. DISCHARGE HOSE TO BE OF SAME CONSTRUCTION. SIZE TO BE 1 1/4". MINIMUM LENGTH OF HOSES TO BE 3'. LENGTH OF HOSE CONFIRMED BY CONTRACTOR.

BARREL WASHER/ REUSE SOLVENT SUPPLY TANK PIPING SCHEMATIC - DETAIL 3



REVISIONS

NO.	DESCRIPTION	BY	CHK	APPR	DATE
A	RELEASED TO DDD FOR REVIEW	MBH	KJM	DDD	040797
B	REVISED PER COMMENTS	MBH	KJM	DDD	040797
C	ADDED SOLENOID VALVES - RMVD. FLOAT SWITCH DETAIL & NOTES	MBH	KJM	DDD	042497
D	UPDATED FLEX HOSES	JEK	JEK	GPM	040403

PROPRIETARY STATEMENT

THIS DRAWING IS THE EXCLUSIVE PROPERTY OF SAFETY-KLEEN CORP. AND IS PROPRIETARY AND CONFIDENTIAL INFORMATION. THIS DRAWING AND THE INFORMATION CONTAINED THEREIN MUST NOT BE DUPLICATED, USED, DIVULGED, REPRODUCED, COPIED, DISCLOSED OR APPROPRIATED IN WHOLE OR IN PART FOR ANY PURPOSE OTHER THAN AS EXPRESSLY AUTHORIZED BY SAFETY-KLEEN CORP. THIS DRAWING MUST BE RETURNED PROMPTLY UPON REQUEST.

TITLE
**BARREL WASHER W/
REUSE SOLVENT
SUPPLY TANK**

S Safety-Kleen Corp.
ONE BRINKMAN WAY ELGIN, ILLINOIS 60123
PHONE (847)697-8480

SCALE	BY	CHKD	APPROVED	OPERATIONS	DATE
AS SHOWN	MBH	KJM	DDD	-	04-07-97
STANDARD TYPE	STD-DWG NUMBER			REV. NO.	
MECHANICAL	BSD-333			D	