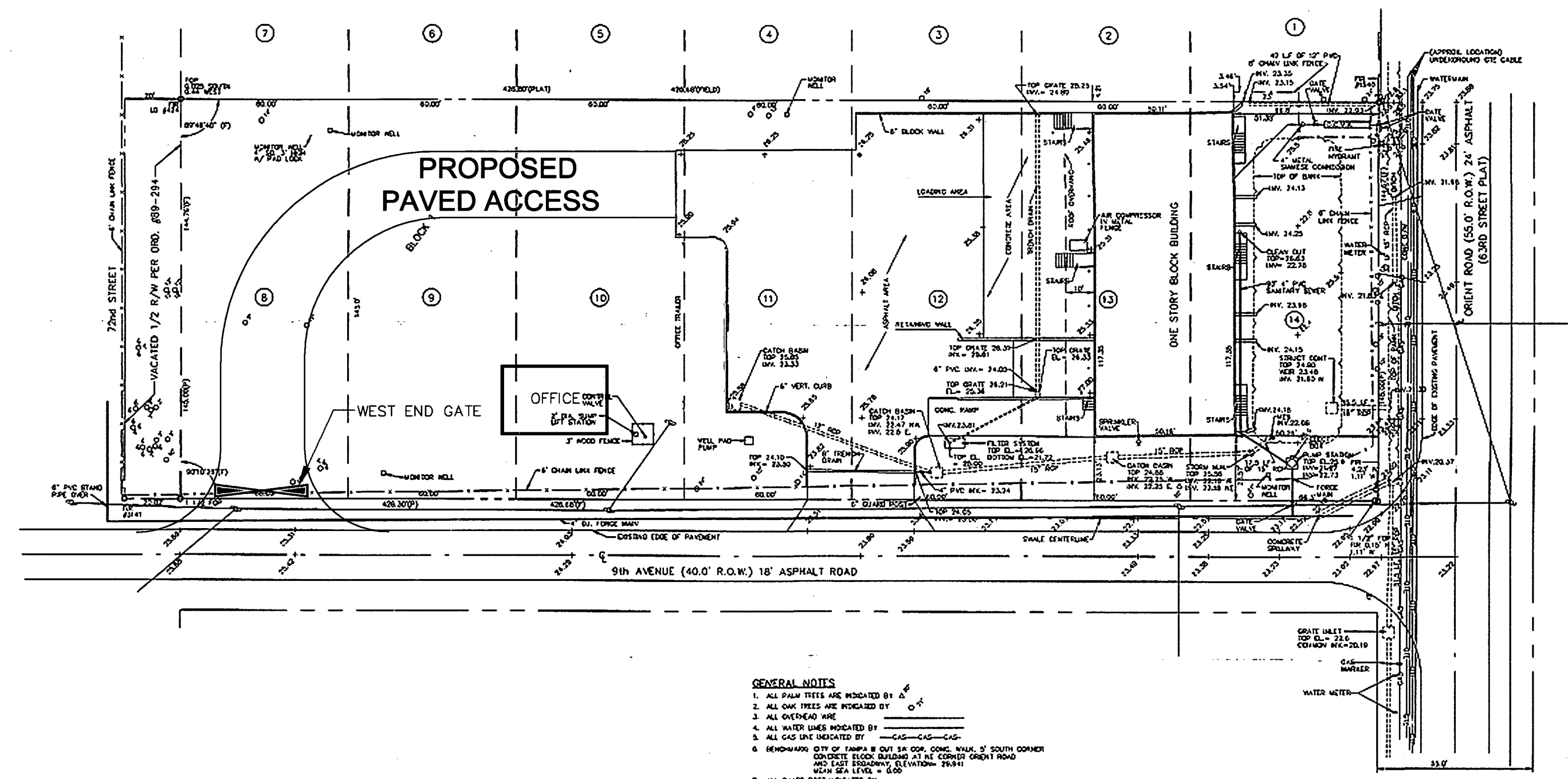


g:\PROJECT\0999034.00\Orientfac.dwg April 05 2000 3:20pm By:1916xrh

CITY ENVIRONMENTAL SERVICES OF FLORIDA, INC.
7202 EAST EIGHTH AVENUE
TAMPA, FLORIDA 33619

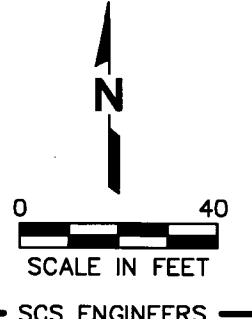
SOURCE: SEMINOLE ENGINEERING (1989), KBN (1994), ENGINEERING & APPLIED SCIENCE, INC. (2/17/96).



GENERAL NOTES

1. ALL PALM TREES ARE INDICATED BY P
2. ALL OAK TREES ARE INDICATED BY O
3. ALL OVERHEAD WIRE
4. ALL WATER LINES INDICATED BY W
5. ALL GAS LINE INDICATED BY G
6. BENCHMARK CITY OF TAMPA IS OUT 5' COR. CONC. WALK, S' SOUTH CORNER CONCRETE BLOCK BUILDING AT NE CORNER ORIENT ROAD AND EAST BROADWAY. ELEVATION = 26.941 MEAN SEA LEVEL = 100
7. ALL GUARD POST INDICATED BY GP
8. ALL FINISHED GRADES INDICATED BY +

NOTE:
THIS DRAWING WAS MODIFIED BY SCS ENGINEERS IN APRIL, 2000. MODIFICATIONS INCLUDE: REMOVAL OF OFFICE TRAILER, WOOD SHED, STEPS, AND RAMP & ADDITION OF NEW OFFICE BUILDING, WEST END GATE, AND LOCATION OF PROPOSED PAVED ACCESS.



Attachment 8. Modified Facility Site Plan and Warehouse Drawing.