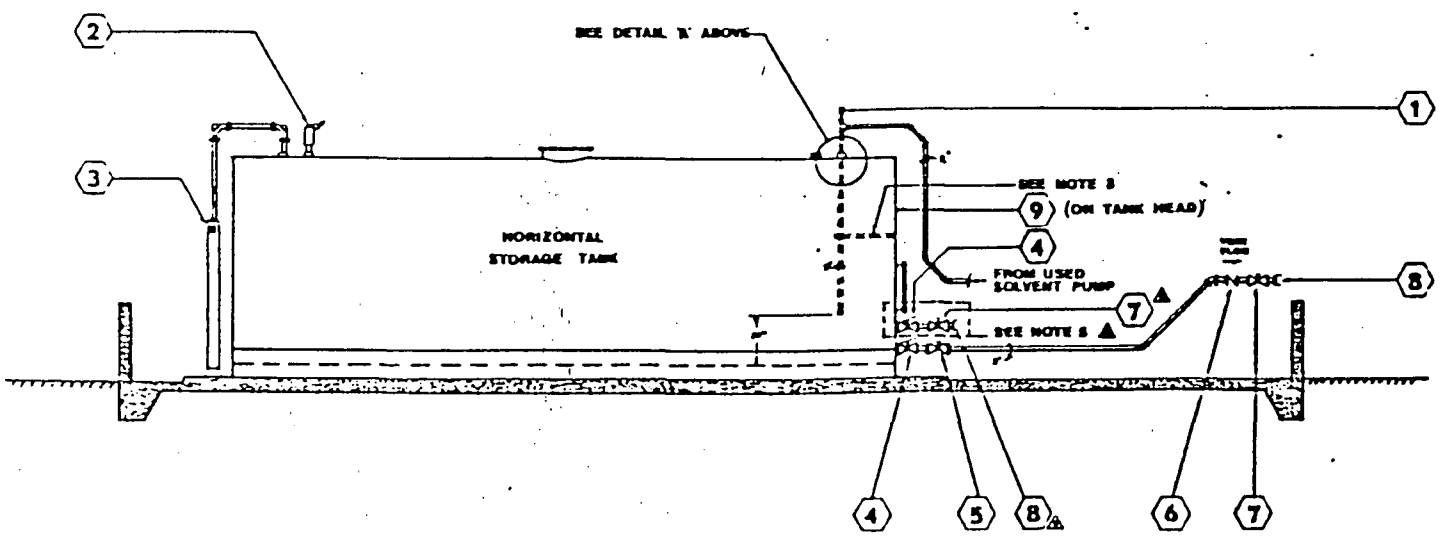


— EQUIPMENT / FIXTURE SCHEDULE —				
MARK	SIZE	DESCRIPTION	PK PART NO	REMARKS
①	3/8"	3/8" AUTOMATIC VACUUM BREAKERS MORRISON BROS. FIG. 134-A	5274	—
②	2"	2" SCREWED PRESSURE/VACUUM VENT MORRISON BROS. FIG. 548 (2 OZ. PRESSURE - 1 OZ. VACUUM)	5273	—
③		TANK GAUGE - MOORMAN BROS. MODEL NO. 7-5	5277	SEE INSTALLATION DETAILS ON SAFETY- KLEEN DWG. A10243
④	3"	3" INTERNAL EMERGENCY VALVE MORRISON BROS. FIG. 272-R0 W/212°F FUSIBLE LINK	5267	SEE INSTALLATION DETAILS ON SAFETY- KLEEN DWG. C11302
⑤	3"	3" DUCTILE IRON GATE VALVE W/ROUND FLANGED ENDS - MORRISON BROS. FIG. 234-D1	5276	SEE INSTALLATION DETAILS ON SAFETY- KLEEN DWG. C11302
⑥	3"	3" BRONZE CHECK VALVE - MORRISON BROS. FIG. 246-A	5266	—
⑦	3"	3" BRONZE GATE VALVE - MORRISON BROS. FIG. 235-B LOCKING TYPE	5265	—
⑧	3"	3" ALUMINUM CAMLOCK QUICK COUPLING - MORRISON BROS. MALE ADAPTER PART F W/DUST CAP & CHAIN	5264	COUPLING TO BE INSTALLED SIX (6) INCHES ABOVE & SIX (6) INCHES INSIDE TOP OF DIKE WALL.
⑨	—	NFPA MATERIAL IDENTIFICATION PLACARD	2452	DISPLAY IN PLAIN SIGHT ABOVE DIKE WALL



— GENERAL NOTES —

- ① THIS DRAWING SUPERCEDES SAFETY-KLEEN CORP. DRAWINGS C10235 & C10236.
- ② SEE INDIVIDUAL SERVICE CENTER SITE PLANS FOR DIKE DIMENSIONS AND RELATED INFORMATION AND ALSO LOCATION AND ARRANGEMENT OF THESE PIPING DETAILS.
- ③ ALL PIPING TO BE SCHEDULE 40 GALVANIZED AND BE SUPPORTED EVERY EIGHT (8) RUNNING FEET - CONTRACTOR TO SUPPLY ALL BRACKETS, CLAMPS, ETC. AS REQUIRED FOR SUPPORTING PIPE - ALL EXPOSED THREADS AT JOINTS TO BE PAINTED WITH A RUST RESISTANT EXTERIOR GRADE PAINT. PIPING SUPPORT HARDWARE TO BE UNISTRUT BRAND OR APPROVED EQUIVALENT.
- ④ ALL DIRECTION CHANGES IN DIRTY SOLVENT LINES TO BE MADE USING A COMBINATION OF 45° ELBOWS OR LONG SWEEP 90° ELBOWS.
- ⑤ THIS INSTALLATION TO BE MADE WHERE NEW TANKS ARE TO BE INSTALLED AT ANY LOCATIONS PRONE TO FREEZING. SEE INSTALLATION DETAILS ON SAFETY-KLEEN DWG. C11302
- ⑥ ALL ITEMS WITH SAFETY-KLEEN PART NO. REFERENCES WILL BE SUPPLIED TO CONTRACTOR.

Exhibit I.E. 3-6

NO.	REVISION	DESCRIPTION	BY	DATE
1		ADDED 1" PLUC - ADDED VALVE/CAMLOCK	W/LJ	11-1-78
2		ADDED ITEM 9 TO SCHEDULE & DRAWING	W/LJ	11-5-78
3		ADDED NOTE 6	W/LJ	11-7-78
4		REVISED DETAIL IN NOTE 6 SHOWN ON DWG.	W/LJ	11-15-78
5		ADDED NOTE 5 TO NOTES 4 TO DRAWING	W/LJ	11-15-78

S safety-kleen corp.

USED SO... T STORAGE... TANK IN... ATION DTL'S

THIS DRAWING CONTAINS INFORMATION PROPRIETARY TO SAFETY-KLEEN CORP. ANY REPRODUCTION, DISCLOSURE OR USE OF THIS DRAWING IS EXPRESSLY PROHIBITED EXCEPT BY SAFETY-KLEEN OR AS SAFETY-KLEEN MAY AGREE IN WRITING.