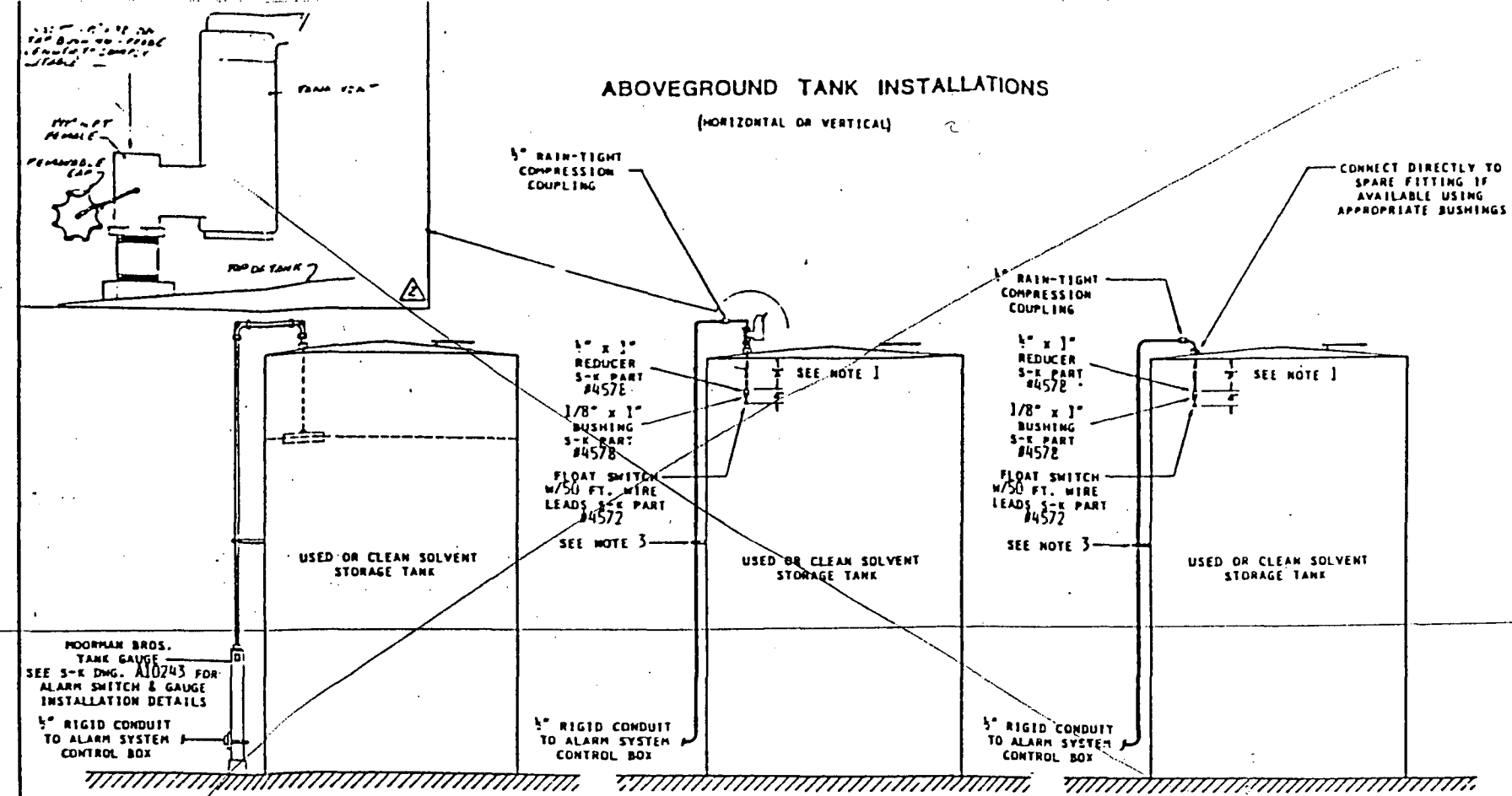


### ABOVEGROUND TANK INSTALLATIONS

(HORIZONTAL OR VERTICAL)



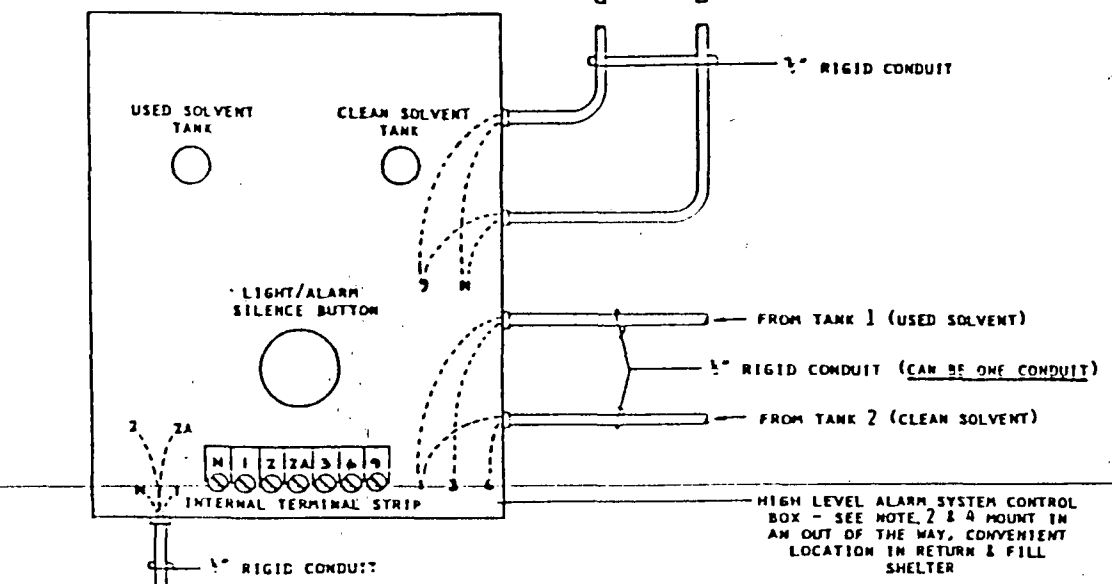
- OPTION 1 -

- OPTION 2 -

- OPTION 3 -

REMOTE STROBE LIGHT - S-K PART #4573 MOUNT ON 1/2" RIGID CONDUIT 4 FT. ABOVE ROOF ON RETURN & FILL SHELTER - SEE NOTE 2

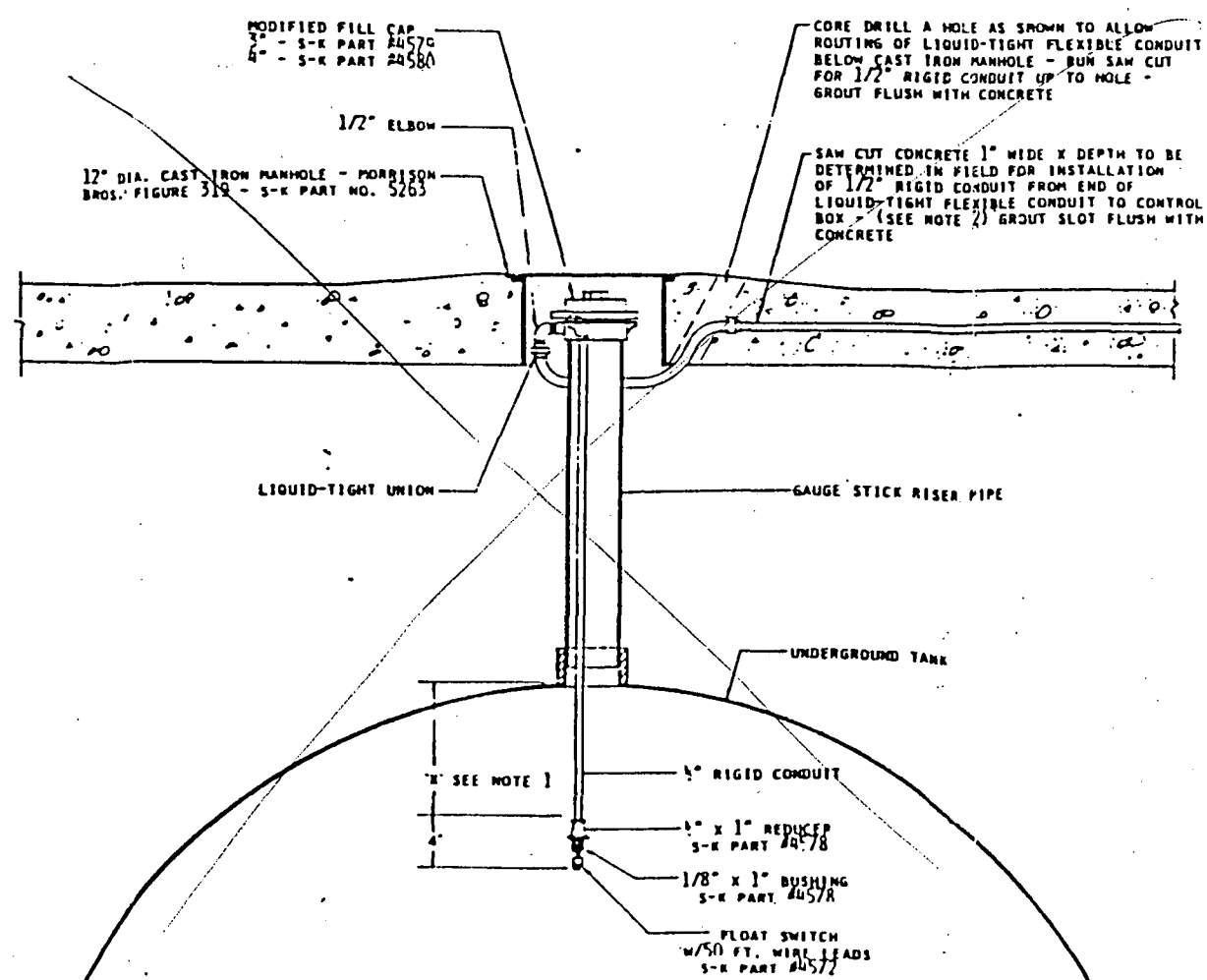
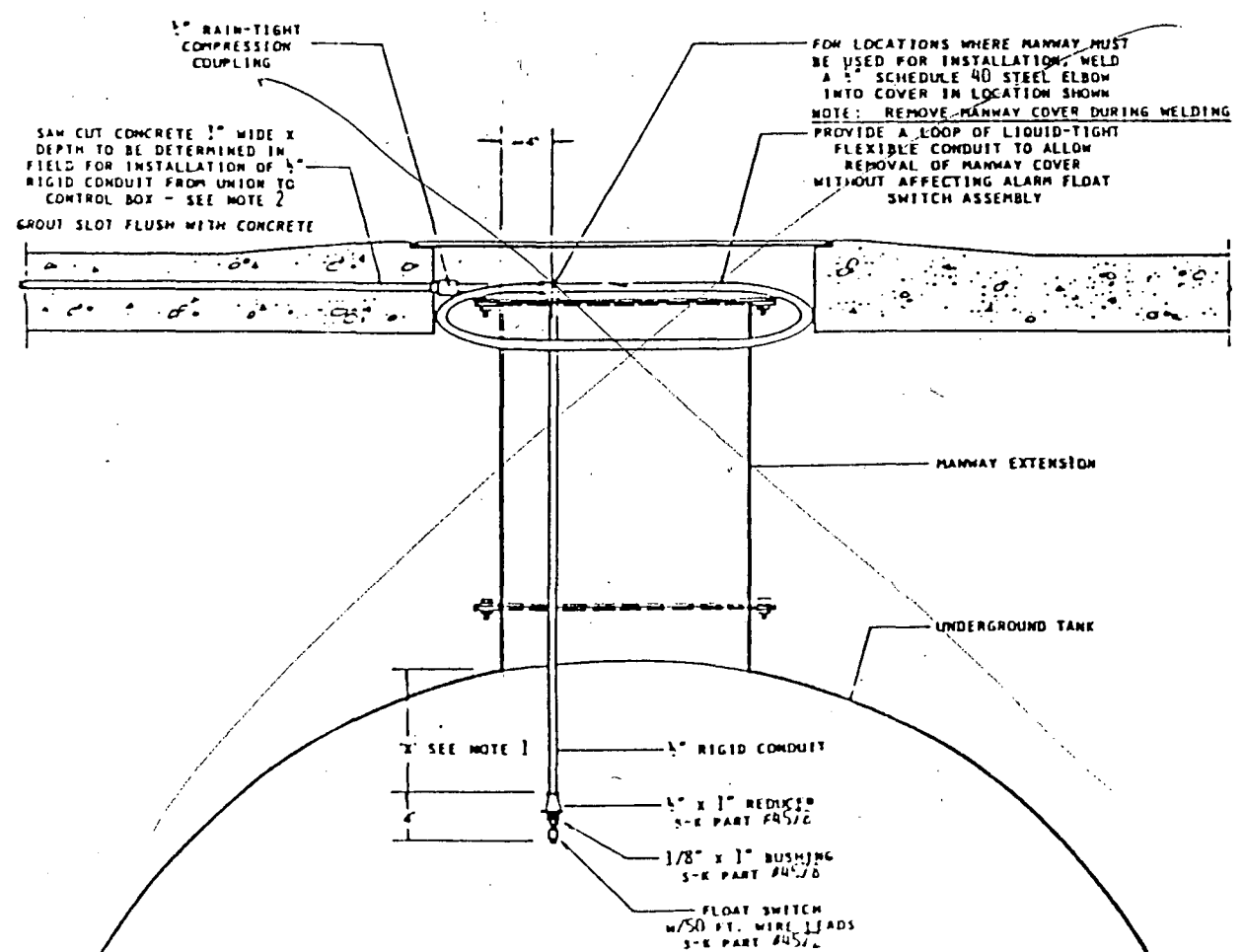
REMOTE BUZZER - S-K PART #4575 MOUNT IN EITHER RETURN & FILL SHELTER OR ON BUILDING WALL WHERE IT WILL BE HEARD



ALARM SYSTEM CONTROL BOX INSTALLATION DETAILS

POWER IN 120 V AC SINGLE PHASE (FROM EXCLUSIVE BUILDING CIRCUIT WITH FUSE OR BREAKER TO TERMINALS N & 1)

USED SOLVENT PUMP SHUT-OFF CIRCUIT (FROM S-K CONTROL PANEL TO TERMINALS 2 & 2A)



### - GENERAL NOTES -

- 1 THE 'X' DIMENSION SHOWN IS VARIABLE & IS DIFFERENT FOR VARIOUS TANK TYPES & SIZES. FOR TABLE OF THESE VALUES REFER TO SAFETY-KLEEN DWG. D11534.
- 2 SEE INDIVIDUAL SERVICE CENTER SITE PLANS FOR RELATIVE LOCATIONS OF THESE DETAILS.
- 3 CONTRACTOR TO SUPPLY & INSTALL CONDUIT SUPPORTS &/OR BRACKETS AS REQUIRED.
- 4 KITS FOR INITIAL INSTALLATION OF HIGH-LEVEL ALARM SYSTEMS ARE AVAILABLE FROM NEW BERLIN THROUGH THE TECHNICAL SERVICES DEPT. AS FOLLOWS:
  - 2 TANK KIT - S-K PART #4570  
 FLOAT SWITCHES W/COUPLING & BUSHING  
 CONTROL BOX (2 TANK SIZE)  
 STROBE LIGHT  
 BUZZER
  - 4 TANK KIT - S-K PART #4571  
 FLOAT SWITCHES W/COUPLING & BUSHING  
 CONTROL BOX (4 TANK SIZE)  
 STROBE LIGHT  
 BUZZER
- 5 THIS DRAWING CONTAINS INFORMATION PROPRIETARY TO SAFETY-KLEEN CORP. ANY REPRODUCTION, DISCLOSURE OR USE OF THIS DRAWING IS EXPRESSLY PROHIBITED BY SAFETY-KLEEN OR AS SAFETY-KLEEN MAY AGREE IN WRITING.
- 6 ALL ITEMS SHOWN WITH A SAFETY-KLEEN PART NUMBER WILL BE SUPPLIED BY SAFETY-KLEEN CORP.
- 7 IF INDIVIDUAL SERVICE CENTER CONDITIONS ARE NOT COVERED BY DETAILS SHOWN HERE, PLEASE CONTACT TECHNICAL SERVICES AT THE CORPORATE OFFICE FOR ASSISTANCE.

REVISED U.G. TANK RISER INSTALL'M	W.L.J.
REV. DESCRIPTION	BY DATE
<b>Safety-Kleen Corp.</b> Exhibit I.E.3-7	
HIGH LEVEL ALARM SYSTEM INSTALLATION DETAILS	