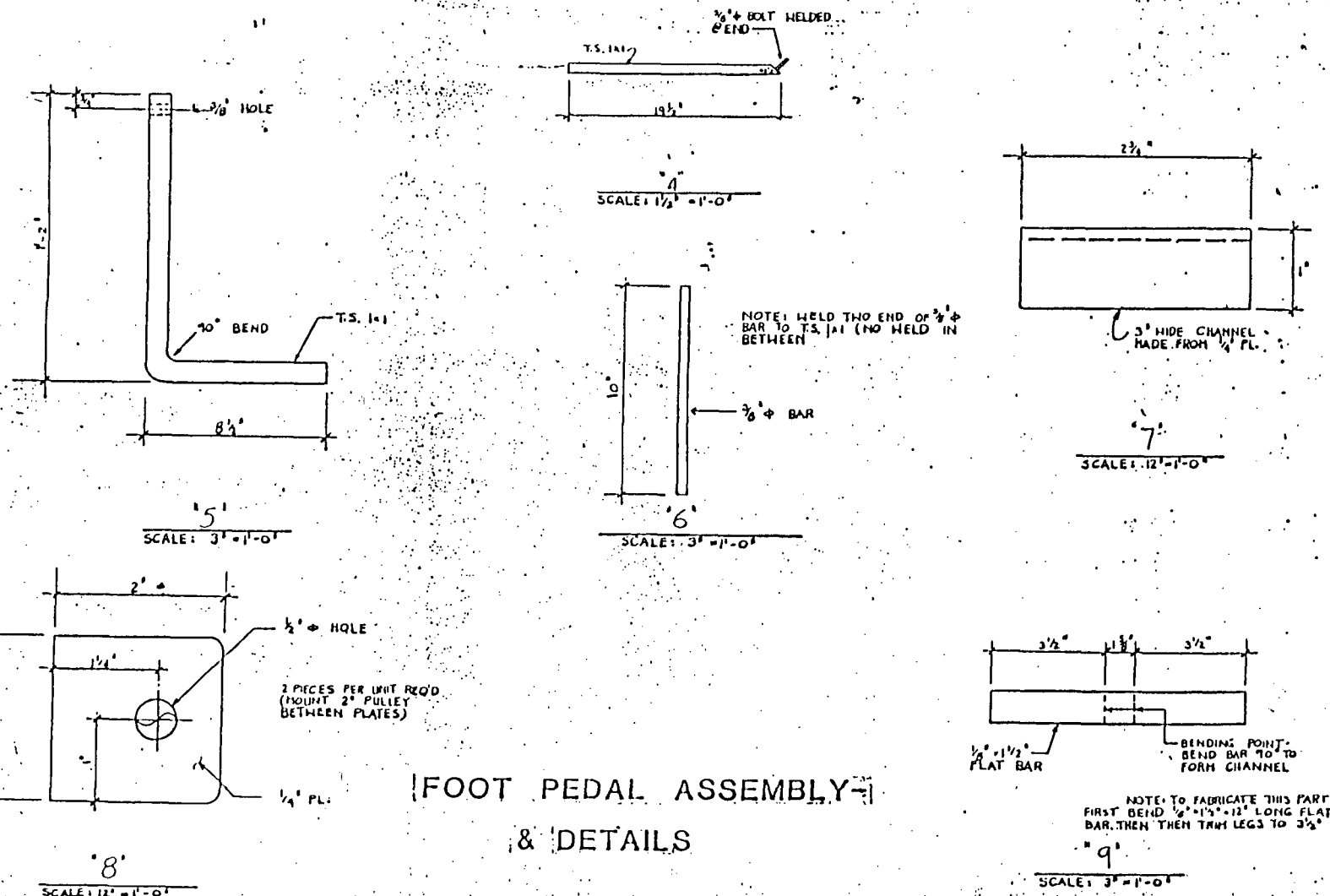
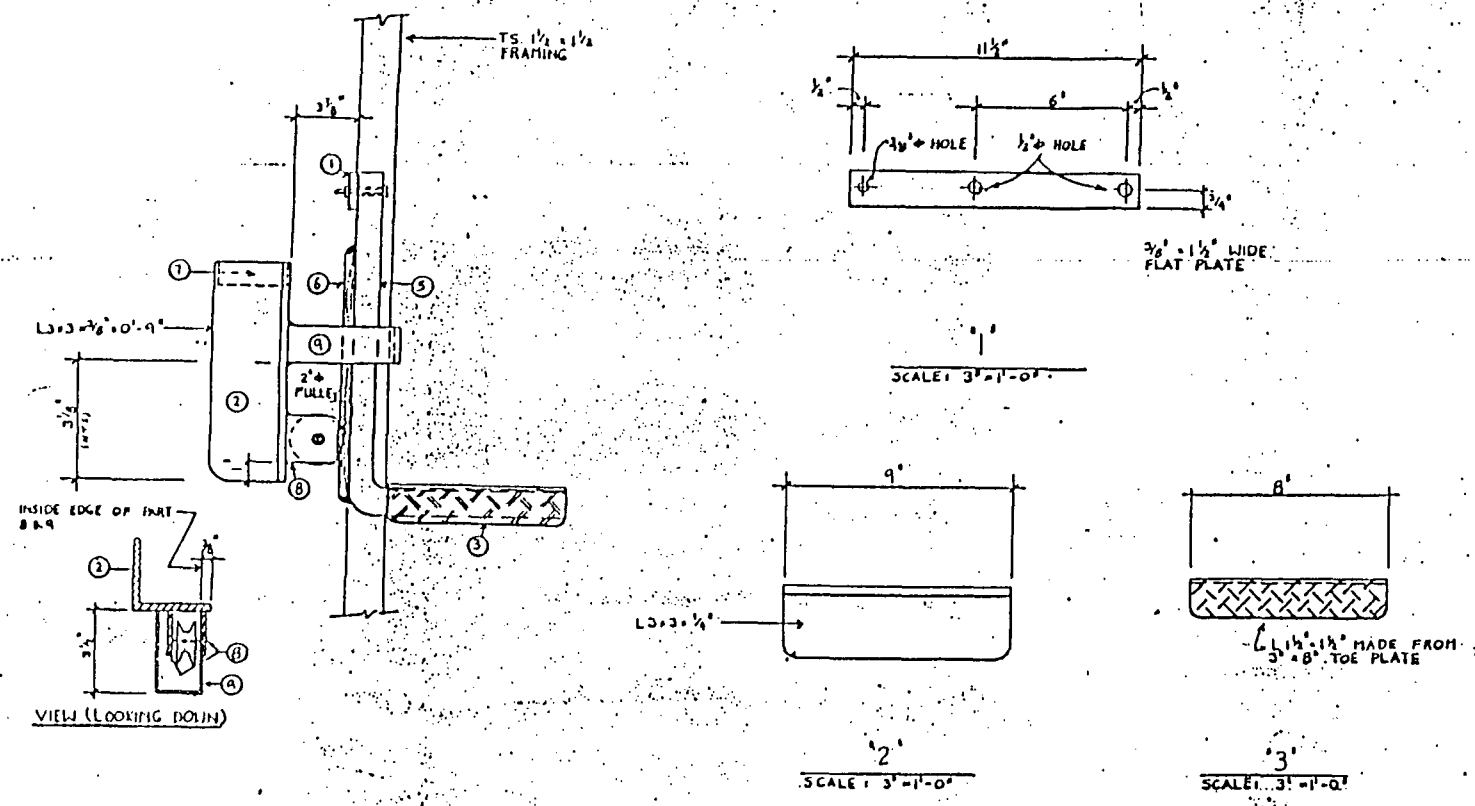
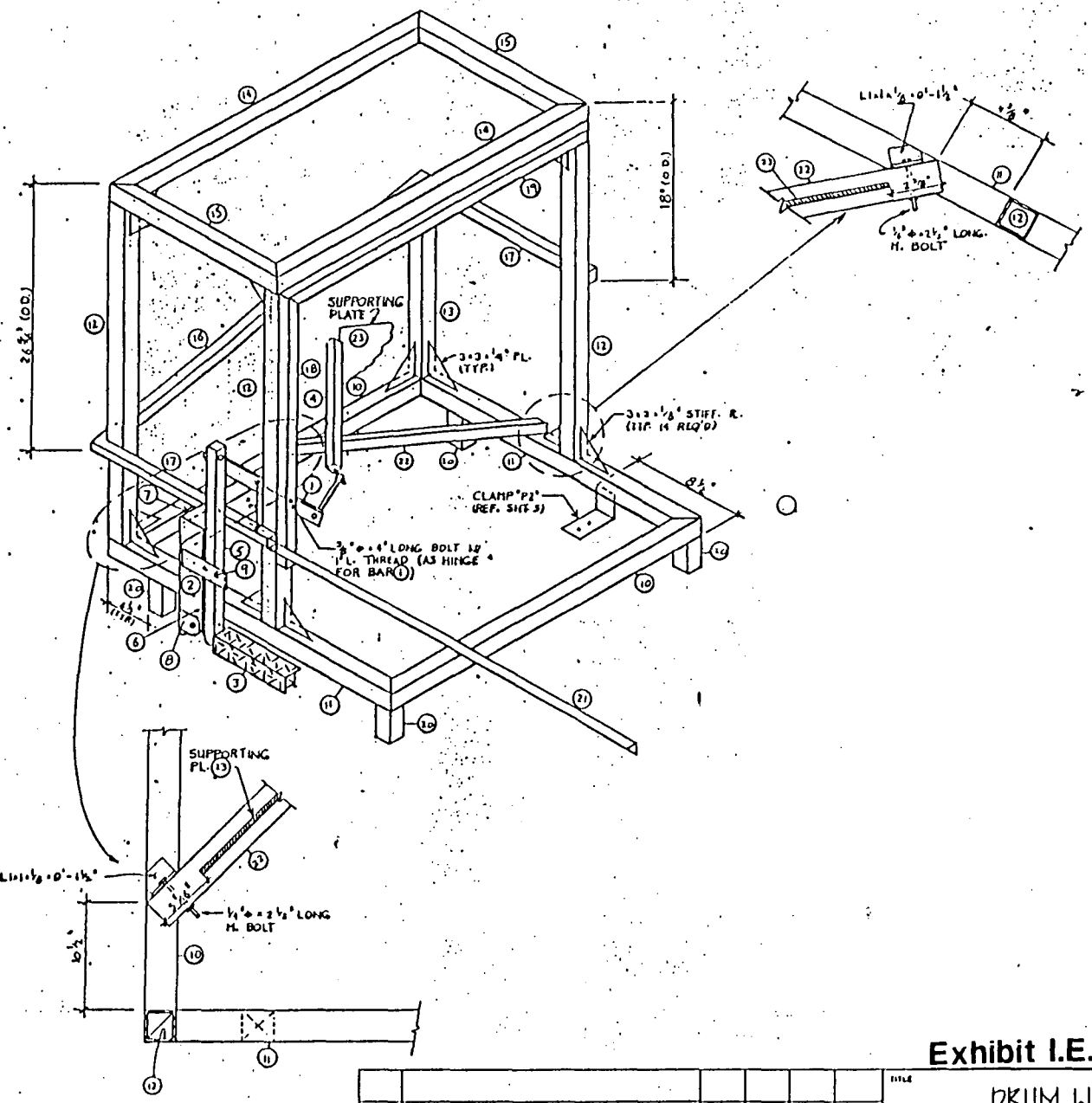


This drawing contains information proprietary to Southwest Industrial Constructors, Inc. Any reproduction, disclosure or use of this drawing is expressly prohibited except by Southwest Industrial Constructors, Inc. or its agents.

MEMBER	NO. REQ'D	TYPE	LENGTH	CUT 1	CUT 2
ⓐ	2	T.S. 1 1/2 x 1 1/2	32 1/2"	45°	45°
ⓑ	2		29 1/2"	45°	45°
ⓒ	3		32 1/2"	90°	90°
ⓓ	1		16 1/4"	90°	90°
ⓔ	2		33 1/2"	45°	45°
ⓕ	2		18"	45°	45°
ⓖ	1	T.S. 1 x 1	35 1/2"	45°	45°
ⓗ	2		19"	45°	90°
ⓘ	1		26 1/4"	45°	90°
ⓙ	1		31 1/4"	45°	90°
ⓚ	4	T.S. 1 1/2 x 1/2	5"	90°	90°
ⓛ	1	L 1 x 1	39 1/2"	90°	90°
ⓜ	1	T.S. 1 x 1	24"	90°	90°



FOOT PEDAL ASSEMBLY & DETAILS

Exhibit I.E.3-9(c)

DRUM WASHER - FOOT PEDAL ASSEMBLY

SAFETY-KLEEN CORP.
 111 ONE THUNDER ROAD • BLOOMINGDALE, ILL. 61710
 PHONE (815) 897-6400

NO.	DESCRIPTION	REV.	BY	CHK.	APP'D.	DATE

SCALE: AS NOTED
 CHECKED: A.L.I.
 DRAWING NO: STANPAKDS
 DATE: 1-1-79
 SHEET: STP. 1002-00

THIS DRAWING CONTAINS INFORMATION PROPRIETARY TO SAFETY-KLEEN CORP. ANY REPRODUCTION, DISCLOSURE OR USE OF THIS DRAWING IS EXPRESSLY PROHIBITED EXCEPT BY SAFETY-KLEEN OR AS SAFETY-KLEEN MAY AGREE IN WRITING.