

*SEAREX INC. Sinclair Educational Archaeological Research Expeditions, Inc.*  
*James J. Sinclair, MA, Archaeologist, President*

*15 Brigantine Court  
St. Augustine, FL 32080*

---

Cellular: 239.218.1622  
Email: [jjsinclair@searex-inc.com](mailto:jjsinclair@searex-inc.com)

November 3, 2016

Dr. Timothy Parson, PhD  
Director, Florida Department of Historical Resources  
500 South Brounogh Street  
Tallahassee FL

Dr. Mary Glowacki, PhD  
Bureau Chief, Bureau of Archaeological Research  
B. Calvin Jones Center for Archaeology at the Governor Martin House  
1001 de Soto Park Drive  
Tallahassee, FL 32301  
Phone: 850.245.6444 / Fax: 850.245.6452

Dear Dr.'s Parson and Glowacki,

Attached please find an archaeological review and permit request from Logging Beast LLC, to conduct Deadhead logging operations on the Blackwater River. The review included a literature review, inclusive of what had been listed in the Florida Master Site File. A two day on site survey was also undertaken.

The findings of this reviewer indicate that there would be no adverse archaeological impact as a result of the activities undertaken by Logging Beast, LLC. The makeup of the principles of Logging Beast, their various commercial diving and educational background as well as the proximity of their milling operations, the fact that all the principles live close to the proposed project area is also a positive aspect of the effort.

Logging Beast personnel are cognizant of the presence of archaeological resources, their importance to the history of Florida and their vulnerability to various impacts. As part of a recognition of this importance a 50-foot buffer has been suggested around any areas noted as holding archaeological resources.

In addition, one of the principles, Kenyan Murrell holds an undergraduate degree in Archaeology from the University of West Florida and will keep a sharp lookout for any reported or unreported archaeological resources and will report any unreported resources to the Bureau of Archaeological Resources.

Please review the enclosed information as well as the permit application. If you need any further information, please feel free to contact either myself or any of the principles of the company. We look forward to continue our relationship with the State of Florida.

Respectfully submitted,

James Sinclair, MA Archaeologist  
SeaRex Inc.  
15 Brigantine Court  
St Augustine FL 32080  
239-218-1622

Archaeological and Historical Survey:  
As Part of a Permit Application for  
Deadhead Logging  
On The  
Blackwater River, Santa Rosa County, Florida  
Pre-Cut Timber Recovery Permit Application  
Number  
57-0347800-001-EI

Submitted by

James Sinclair, MA

Kenyan Murell, BA



## **Abstract**

Logging Beast, LLC is a local lumber supplier based out of Milton, Florida. They specialize in recovering historic old-growth timbers from the rivers of northwest Florida. Currently, they hold an active permit for a section of the Escambia River in Escambia and Santa Rosa Counties and they are looking to expand logging recovery operations into the neighboring Blackwater River.

The State of Florida claims ownership of most of the logs since they are located on sovereign submerged lands. In 2000, a moratorium prohibiting deadhead logging was lifted allowing loggers to retrieve deadhead logs from certain Florida water bodies upon authorization and according to specific legal and environmental conditions. Today, the authorization is provided through Department of Environmental Protection (DEP) issuance of an Environmental Resource Permit from the Submerged Lands and Environmental Resource Permitting Program and through a Use Agreement from the Governor and Cabinet serving as the Board of Trustees of the Internal Improvement Trust Fund.

Over the past few decades there has been several series of completed archaeological investigations and surveys for the Blackwater River and Drainage System, however the DEP reports that there are no recorded surveys on file with the State Division of Historical Resources (DHR) aimed with the specific intention of meeting the requirements set forth by the DEP for permitting deadhead logging activities.

This archaeological and historical survey was conducted for submission as a partial requirement in the application process for Logging Beast, LLC to obtain an Environmental Resource Permit from the DEP for the recovery of pre-cut submerged timbers, commonly known as deadhead logs, within a 20 mile stretch of the Blackwater River in Santa Rosa County, Florida.

## **Methodology**

The crew that handles Logging Beast's deadhead recovery operations is comprised of professional commercial divers with extensive knowledge and experience in salvage and rigging, as well as a member with a degree in archaeology who has previously worked on several of the sites and surveys within the project area. All members of the dive crew hold Master Deadhead Logger Certifications with the DEP and are very conscious and committed in conducting underwater deadhead logging operations without negatively impacting any archaeological or historically significant sites or components. Additionally, all members are fully aware of the possibility of encountering undocumented cultural resources and further understand the procedures for notifying DHR upon discovery.

Logging Beast's dive crew employs a precise method for the identification, recovery, transportation and removal of the timbers from the proposed water body. Logging operations involve regular implementation of remote sensing devices to scan and survey the river bottom for evidence of submerged timbers. Identification and recovery operations are managed by a three man team comprised of the diver, dive tender and communications supervisor. The diving is conducted using a surface supply air compression system and commercial diving helmet that allows the diver a safer working condition and direct line of communication with the topside crew. Identification of deadhead logs is determined by inspection of the cut ends, typically seen as either flat sawn or angled axe-cut. The recovery process involves lifting the submerged logs from the river bottom using floatation lifts and a cable winching system and securing the logs for transport to the approved removal landing. The logs are removed from the water using a tilt-bed trailer that is backed down to the water line where the logs can be easily winched up and secured

for safe transport to the sawmill (Figure 1). This method best ensures logging operations will not negatively affect cultural and environmental resources.



Logs secured to Logging Beast pontoon boat during transport on Escambia River.



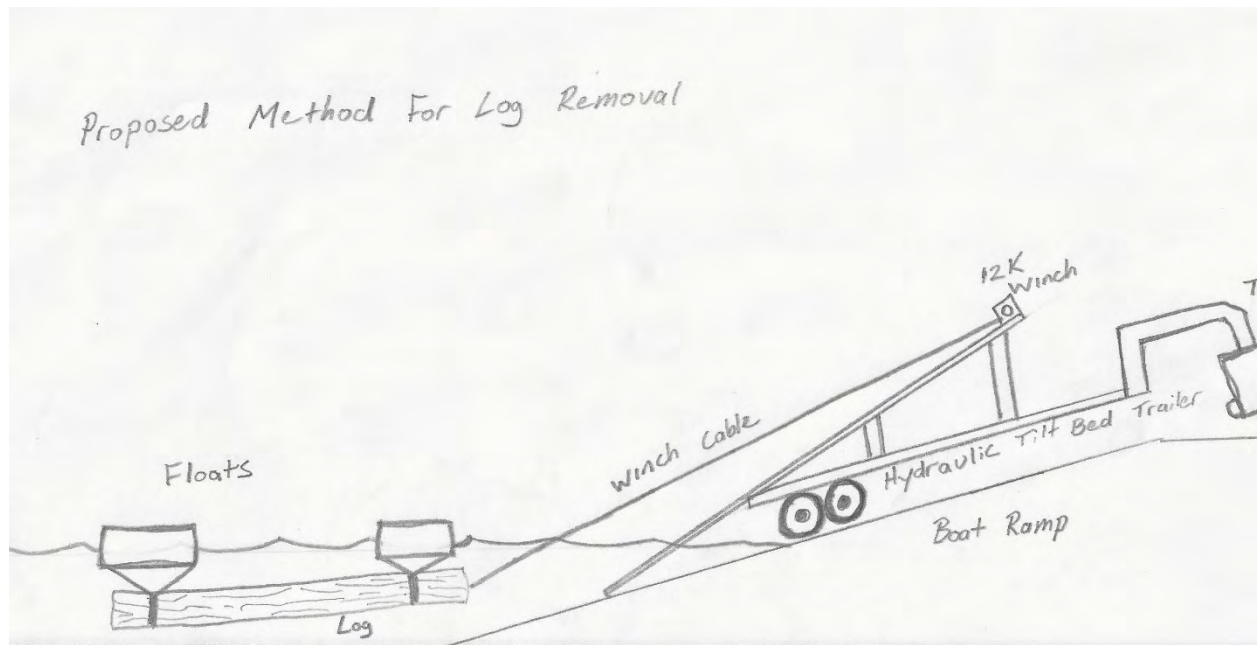


Illustration of Log Removal method



Photo of recovered Deadhead Cypress Log from Escambia River, FL. (Logging Beast 2015)





**Figure 1.** Deadhead logs loaded on tilt bed trailer for removal. Image provided by Logging Beast, Authorized removal site at Beck's Lake off the Escambia River.

Prior to conducting the field survey a number of resources were utilized to determine the project scope and build an understanding for the local and regional prehistoric and historic contexts of the project area. A review of both the DEP and DHR's Report Structure for Archaeological Survey Conducted for Submission of Recovery of Pre-Cut Timber permit application requirements was made in order to ensure proper survey procedure.

Initial research preparation began with a standard cultural resource search by Township, Range and Sections covering the proposed 20 mile permit reach was requested from the Florida Master

Site File (FMSF) database. A total of 79 archaeological site forms, terrestrial and submerged, were received and further reviewed to determine 40 sites in Santa Rosa County, Florida that were located within or adjacent to the proposed project area. Additionally, a review of a number of historical and archaeological surveys, investigations and reports for the Blackwater River system added further insight into the historical framework and significance of sites along the project area.

## **History**

Sites from the prehistoric periods are far less frequent within the surrounding proposed project area than during the historic periods. Since the late Pleistocene, sea level rise has greatly changed the landscape of west Florida and most of the preferred settlement locations from that time have been inundated and or covered with vast sediment deposition. The archaeological evidence for prehistoric occupation in the west Florida area extend only to the Late Paleo-Indian Period, with temporal markers recovered throughout the region from the Chipola River to the Escambia Bay System. From the Early Archaic Period to the initial stages of European colonization, aboriginal occupation of the Blackwater River System relied heavily on the subsistence pattern of exploiting the natural food resources. The coastal areas along the lower reaches of the Blackwater Basin provided locations for more permanent or semi-permanent sites, while along the upper extent, sites likely characterize short term occupations associates with hunting and gathering. The only extensive midden accumulations are located lower along the shores of the Blackwater and East Bays.

During the historic periods, the Blackwater River System had a significant role in the economic development of northwest Florida. During the Colonial period early exploration into the area

revealed vast acreages of virgin timber forest that would later become the key economic factor for settlement into the area by American pioneers. During the 19<sup>th</sup> and early 20<sup>th</sup> centuries the Blackwater River served as a primary transportation route for the many industrial complexes that arose along the river basin. The lumber mills of Milton and Bagdad, Florida, cut virgin Blackwater Swamp cypress and long leaf heart pine timber, which was then exported to markets in Europe, South America, Cuba and the East coast of the United States. During the Civil War most of the industrial complexes were burned down by Confederate troops with the retreat of the area during the advancing presence of Union forces. After the war, many of the industries were rebuilt and retained their former glory. All of the significant historical sites within the project area are primarily associated with the former industries use of the maritime landscape.



Lumber stacked ready for shipment at the downtown Milton waterfront. (FL Memory)

## **Conclusions**

The sites of potentially significant cultural resources that lie within and adjacent to the proposed project area were extensively reviewed prior to conducting the field survey. These sites include shipwrecks, submerged features of the historic local maritime landscape and terrestrial sites with inundated components. Many of the sites are clustered in close proximity to each other and have been documented as associated sites based on related locations and histories. For this reason,

several of the following site descriptions have been mapped and referenced in the following review in accordance to their locations along the project area beginning with the southern Start Point working northward to the End Point.

### **Bay Point and Shield's Point Sites:**

Bay Point is the geographic feature that denotes where the Blackwater River feeds into the Blackwater Bay. It was the location of a historic mill community that operated from 1880 to 1918 during the peak of northwest Florida's lumber boom. Shields Point is located directly northwest of Bay Point to form a protected cove off the main river channel that was used during the early twentieth century as a site for ship abandonment. The sites along Bay Point and Shield's Point are primarily associated with the former Geneva Mill Company at Bay Point. Terrestrial sites along the shoreline that may comprise unrecorded inundated features include the mill site (8SR75A), the shipyard (8SR1350) and part of the shipyard's marine ways (8SR1408). During the survey no additional inundated features from these sites were visibly present and the sites appear to be primarily located in the undeveloped lots adjacent to residential areas.

Within the cove are 8 previously recorded shipwreck sites, (8SR1477, 8SR1478, 8SR1491, 8SR1492, 8SR1489, 8SR1680, 8SR1681, 8SR1720). These sites lie within 6-12' of water and are often visible above the water line at lower tides. None were observed to be visible during time of field survey due to higher tidal waters. These sites are identified as abandoned vessels associated with the lumber industry decline at Bay Point. The shipwrecks include wooden hulled schooners that served as lumber transport barges. Previous archaeological investigations by the University of West Florida reveal these sites were heavily salvaged shortly after abandonment

and were later burned to the water line. The sites are documented as potentially eligible for criteria to meet the National Register of Historic Places. It is recommended that no logging activities shall be conducted in the Shields Point cove and a 50 foot buffer to recorded terrestrial and submerged sites located along the project area.



8SR1477 "Palafox" (*photo by Sjordal 2007 UWF*)

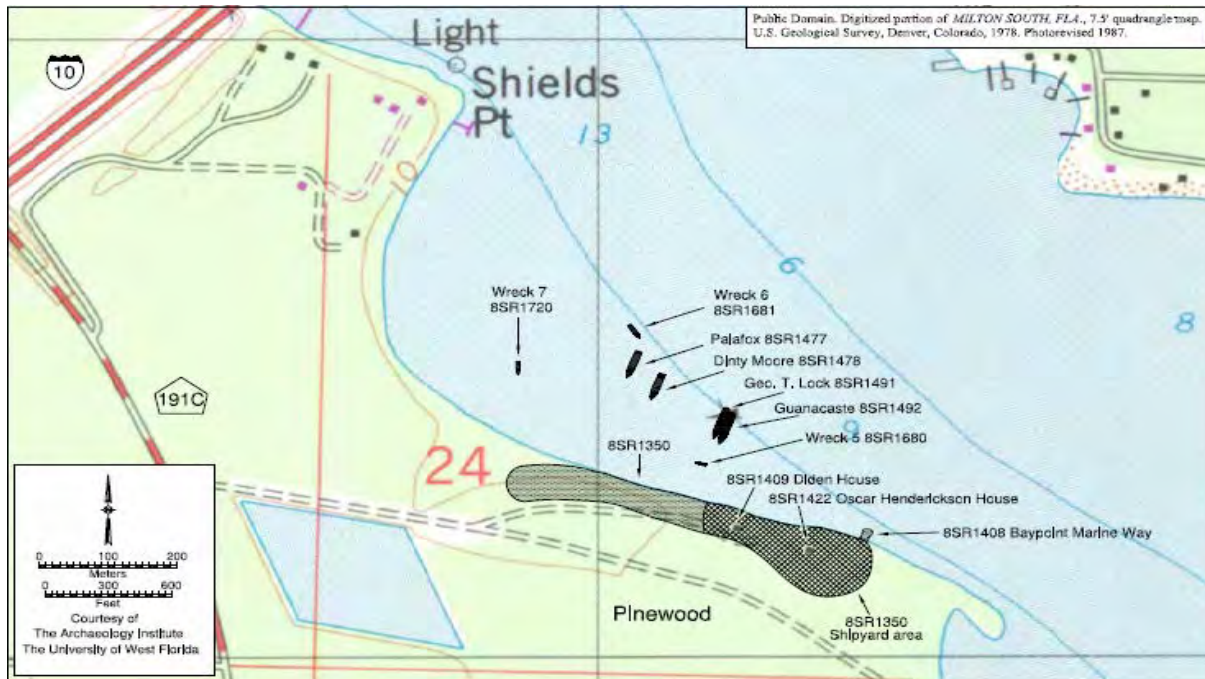




8SR1478 “Dinty Moore” (*photo by Sjordal 2007 UWF*)



8SR1491 “Geo. T. Lock” (*photo by Sjordal 2007 UWF*)



Site map with locations of Shields Point sites and wrecks. (Sjoldal 2007 UWF)

### Interstate 10 to Highway 90:

In the 3.25 miles between Interstate 10 and Highway 90 lie 15 archaeological sites within or adjacent to the project area that are significant to a local level and have been previously recorded as potentially eligible to meet criteria for the National Register. Of these 15 sites, 11 are historic American-Period shipwrecks (8SR2182, 8SR1554, 8SR1553, 8SR1552, 8SR1493, 8SR1488, 8SR1485, 8SR1484, 8SR1483, 8SR1482, 8SR1481), three (8SR841, 8SR821, 8SR807) are historic terrestrial sites along the shoreline with further possible undocumented inundated features and one (8SR766) is a series of submerged features on the historic maritime landscape.

The 11 recorded shipwreck sites along this area are primarily associated with the local historical industries that once dominated the Blackwater River during the mid-19<sup>th</sup> to early 20<sup>th</sup> Century.

They have received a moderate amount of documented research from previous investigations and their histories are fairly known. Five of the shipwrecks (8SR1493, 8SR1485, 8SR1484,

8SR1483, 8SR1482) are previously recorded wooden barges that were likely abandoned, salvaged and scuttled or burned to the water line during the terminus of their service use resulting from the declining lumber industry on the Blackwater River during the early 20<sup>th</sup> Century. The shipwrecks (8SR2182, 8SR1488, 8SR1481) are identified as wooden vessels including a schooner, fishing smack and steamship. These vessels are also identified as probable sites of ship abandonment, with the exception of 8SR2182 that has recently been identified through historical documentation as an accidental sinking.



Tugboat pushing barges with lumber down Blackwater River. (Florida Memory)





Image of Deck Beam from 8SR1481 “Snapper Wreck” (*Raupp 2004 UWF*)

Additionally, the three sites (8SR1554, 8SR1553, 8SR1552) appear to be individually recorded features from potentially a single disarticulated vessel that likely shares a similar history and association with the fallout of the local lumber industry and the eventual salvage and abandonment of its support vessels.

None of the shipwreck sites were visible during the field survey. It is recommended that a 50 foot buffer zone be placed around the boundaries of these shipwreck locations.

The terrestrial archaeological sites (8SR841 and 8SR821) are the locations of the former Bagdad Land and Lumber Company mill site. The sites are located at the confluence of Pond Creek and the Blackwater River along the western bank and on a small island that separates the main channel. The sites have been heavily damaged from development and have been capped with fill on shore. They have been previously recorded as significant and eligible for criteria to meet

the National Register. Site files records mention potential for additional unknown inundated features. During the survey no features were visible and currently the location of site 8SR821 has been developed into a public park honoring the former mill site.



Historic photograph of the Bagdad Land and Lumber Company (Florida Memory)

The site 8SR807 lies less than a mile south from the previously mentioned sites and is the site remains of a historic shipyard. During the field survey no submerged features were visible. It is recommended that a buffer zone of 50 feet be allotted to these site boundaries.



Current view of Bagdad Mill Site Park waterfront at confluence of Blackwater and Pond Creek.

The site 8SR766 is an approximate 3 kilometer section of the Blackwater River containing the scattered remnants of the historic Air-Dry Pilings that were utilized by various lumber mills in the area to store and dry the freshly milled wet lumber to be later shipped out. During the survey a number of different dilapidated wooden dock structures, dolphins and pilings were visually observed, noted and photographed. It is recommended that a 25 foot buffer zone be applied to sections of the river where these features are present.





Stacked Lumber on Pilings along Blackwater River in Bagdad, FL. (Florida Memory)

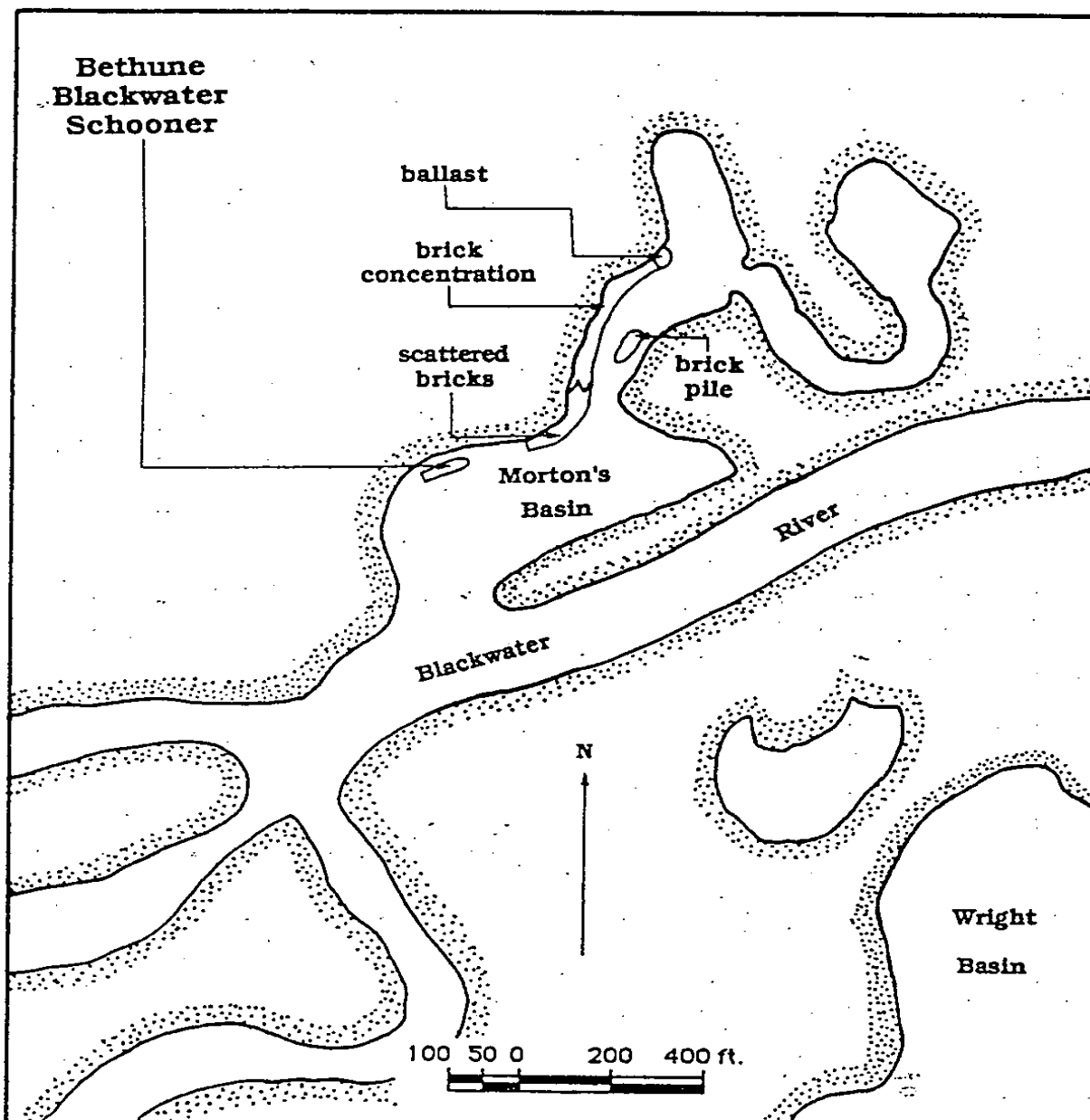


Current view of existing air dry piling structures along the Blackwater River.

### **Highway 90 to northern End Point**

From Highway 90 to the northern extent of the project area lie three shipwreck sites (8SR1487, 8SR1486, 8SR985). The vessel types vary between barge, bateau and a schooner. All are of wooden construction and have additionally been previously recorded as probable sites of ship abandonment. Sites 8SR1487 and 8SR1486 are located in basins along Blackwater River and have been previously recorded as having insufficient information on criteria to meet to National Registry of Historic Places. None of these sites were visibly observed during the field survey. It is recommended that these sites be avoided with a 50' buffer.

The “Bethune Blackwater Schooner” (8SR985) is recorded as a centerboard schooner with an extremely well preserved condition. It is the only shipwreck and archaeological site currently on the Blackwater River that is listed on the National Register of Historic Places. It is located along the edge of a small slough off the Blackwater River, locally known as Morton’s Basin. No submerged features of the site were visible during the time of field survey. It is recommended that no logging should be permitted in the slough and a 50’ buffer be applied to the site boundary.



Site Map for 8SR985 "Bethune Schooner" (FL BAR Archaeological Report 21)

## **Conclusion**

Using the previously described methodology inclusive of the exclusion boundaries around each site, and after noting the known areas of archaeological concern we feel there will be no impact on these sites from the proposed Logging Beast inc. deadhead submerged log recovery operations.

The makeup of Logging Beast, LLC is commercial divers who live and work in the area of the permit request, as well, the company includes an archaeologist with an undergraduate degree from the university of West Florida who is familiar with the area as well as the sites in the proposed permit area. The professional level of the participants helps to guarantee that both known and potential unknown sites will be treated with the utmost respect and care.

It is the opinion of the reviewing archaeologist that Logging Beast, LLC should be awarded a deadhead logging permit for the Black Water River area as proposed in the site parameters for the area.



# Appendix I

## Attachments:

### *1. Section, Township and Ranges of survey area.*

T1N, R28W sections 2, 3, 10, 11, 13, 14, 23, 24

T2N, R28W sections 25, 35, and 36

T2N, R27W sections 11, 12, 15, 16, 19, 20, 21, and 30

T2N, R26W sections 6, 7

### *2. Map of survey area.*



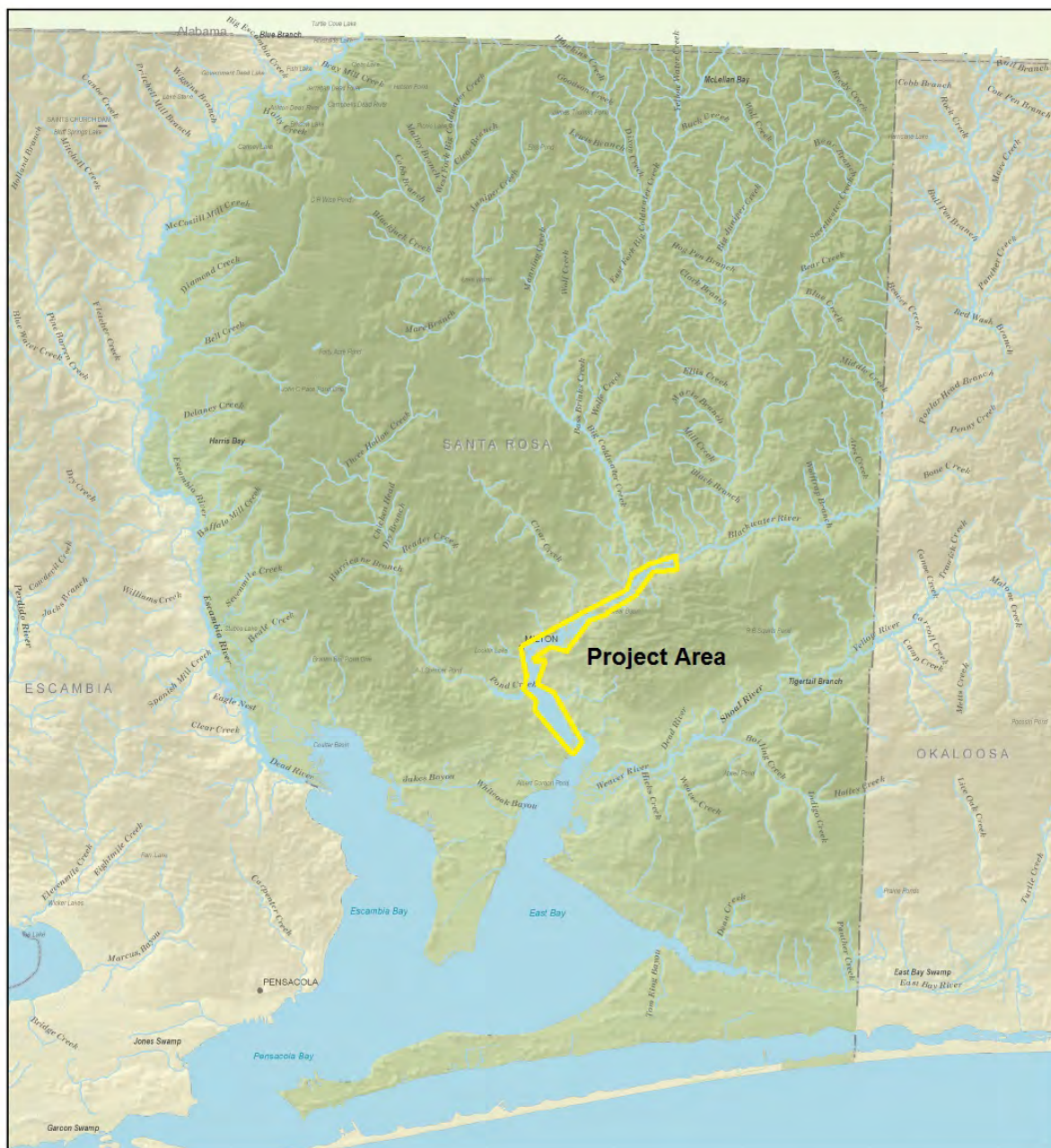
13.2 mile survey stretch of the Blackwater River in Santa Rosa County, Florida



Start Point GPS: 30°34'14.90"N      87° 0'0.88"W

End Point GPS: 30°40'41.01"N      86°57'26.54"W

Removal Site GPS:      30°33'49.86"N      87° 0'40.99"W



**Legend**

- Stream/River
- Canal/Ditch
- Lake/Pond
- Swamp/Marsh/Wetland
- Dams
- County Boundary
- State Boundary
- Cities/towns

## Santa Rosa County Hydrography

Produced in 2008 by the Florida Center for Instructional Technology (FCIT)  
using data from the United States Geological Survey (USGS).



0 2 4 8 Miles

Florida Waterways: Santa Rosa County, 2008

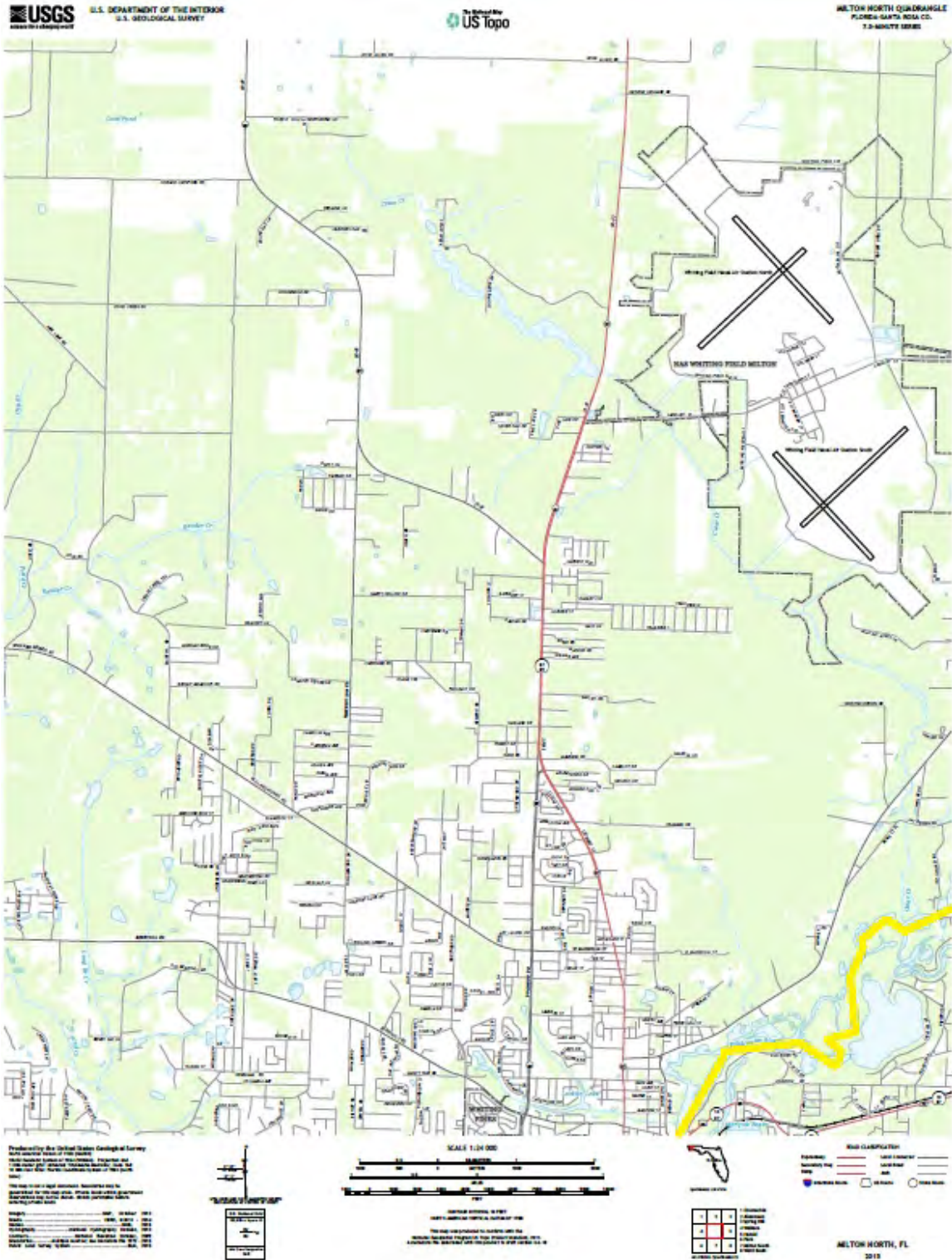
Florida Center for Instructional Technology, (Tampa, FL: University of South Florida, 2008)

Downloaded from *Maps ETC*, on the web at <http://etc.usf.edu/maps> [map #11268]

South Quadrangle USGS 7.5' Topographic Map







Milton

North Quadrangle USGS 7.5' Topographic Map





4. Color photographs of log retrieval site.



ramp at the Removal Site (facing north)





Satellite aerial image of the Removal Site

*5. Color photographs of significant historical resources that have been given a restriction or buffer.*

\*(Photos represent significant historical resources above water. Many sites are submerged or inundated and photography was not possible.)



Confluence of Pond Creek and Blackwater River facing east. Current location for the Bagdad Mill Site Park pier. Recorded archaeological sites: 8SR821 & 8SR841.



Existing

historic dock structure example of 8SR766 "Blackwater Air Dry Pilings"



6. A copy of request from Logging Beast Archaeologist for a historic property search conducted through the Florida Master Site File.




Request for Scanned Documents

Person requesting data James Sinclair, MA Date of request 07/26/16  
Organization Blue Water Ventures Int.  
Telephone 239-218-1622 Fax \_\_\_\_\_ Email slipwork1@gmail.com  
Address 15 Briarcliff Ct City St. Augustine State FL Zip 32080

Please acknowledge that you have read the boxed information by signing as indicated.

- ▶ I acknowledge that any information identifying the location of an archaeological site is exempt from the public records law, under Florida Statute 267.135, when the Division of Historical Resources finds that the disclosure of such information may create a risk of harm, theft, or destruction at such site.
- ▶ I acknowledge that precise locations of archaeological sites are sensitive and that unauthorized distribution of Florida Master Site File data may lead to vandalism and destruction of sites.
- ▶ I agree not to publish, distribute, post on the internet or otherwise disseminate data which would reveal archaeological site locations.
- ▶ I acknowledge that Site File data should not be distributed to other users by me or my organization. Other users should contact the Site File directly.
- ▶ Collecting or digging for artifacts on state lands without a permit from the Division of Historical Resources is a third degree felony. Collecting or digging on Federal land also requires a permit and is a felony offense. It is illegal to trespass, disturb or dig for artifacts on private property without the landowner's permission.

→ 

Reason data are needed: Data will be used to find Archaeological resources in beachland logging project

Scanned Site File or Survey Data Requested (Please list site file IDs or survey #s): \_\_\_\_\_

Florida Master Site File

Division of Historical Resources / R.A. Gray Building  
500 South Bronough St., Tallahassee, Florida 32399-0250  
Phone 850.245.6440 / Fax 850.245.6439 / Email [sitefile@dos.state.fl.us](mailto:sitefile@dos.state.fl.us)

7. Log Sheet.



## Attachment II: List of Sources Consulted

### Florida Master Site File Review

THE HISTORY AND ARCHAEOLOGY OF SHIP ABANDONMENT AT SHIELDS POINT, Paul Goodwin Sjoldal UWF 2007

HOOK, LINE, AND SINKER: HISTORICAL AND ARCHAEOLOGICAL INVESTIGATIONS OF THE SNAPPER WRECK (8SR1001)  
By Jason Thomas Raupp UWF 2004

Phase III Archaeological Investigations of the Blackwater River Drainage  
Daniel T. Penton, University of West Florida Archaeology Institute 1991

HARBOR KINGS: AN ANALYSIS OF SHIELDS POINT WRECK #5 USING A WORLD SYSTEMS PERSPECTIVE, Shane Gilliam Pickett, UWF 2008

Bureau of Archaeological Research (BAR) Archaeological report #25 Pensacola Shipwreck Survey Phase I 1991

### Photos from FL memory website

*Stacked lumber at the waterfront by the Bagdad Land and Lumber Company sawmill.* 1917. Black & white photoprint. State Archives of Florida, Florida Memory. Accessed 26 Sep. 2016.<<https://www.floridamemory.com/items/show/33659>>.

*Bagdad Land and Lumber Company.* 193-. Black & white photonegative. State Archives of Florida, Florida Memory. Accessed 26 Sep. 2016.<<https://www.floridamemory.com/items/show/141841>>.

*Bagdad Land and Lumber Company tugboat with barges of lumber.* 191-. Black & white photoprint. State Archives of Florida, Florida Memory. Accessed 26 Sep. 2016.<<https://www.floridamemory.com/items/show/34822>>.

*Lumber ready for shipment - Milton, Florida.* 19--. Black & white photoprint. State Archives of Florida, Florida Memory. Accessed 13 Sep. 2016.<<https://www.floridamemory.com/items/show/33367>>.

## Appendix III

### UTM Data for Archaeological Sites in the permit area:

#### Bay Point / Shields Point

8SR75A “Bay Point Mill Site”	UTM: Zone 16, E 499470, N 3381800
8SR1350 “Bay Point Shipyard”	UTM: Zone 16, E 499100, N 3382240
8SR1408 “Bay Point Marine Way”	UTM: Zone 16, E 499400, N 3382190
8SR1477 “Palafox”	UTM: Zone 16, E 499180, N 3382400
8SR1478 “Dinty Moore”	UTM: Zone 16, E 499240, N 3382330
8SR1491 “Geo. T. Lock”	UTM: Zone 16, E 499370, N 3382250
8SR1492 “Guanacastle”	UTM: Zone 16, E 499420, N 338220
8SR1489 “Bay Point Barge”	UTM: Zone 16, E 499712, N 3382081
8SR1680 “Shields Point #5”	UTM: Zone 16, E 4991540, N 3382330
8SR1681 “Shields Point #6”	UTM: Zone 16, E 4991056, N 3382555
8SR1720 “Shields Point #7”	<i>unknown</i> (site report unavailable)

#### I10-hwy 90

8SR2182 “Killian Wreck”	UTM: Zone 16, E 496900, N 3386720
8SR1554 “Sanborn’s Stem Site”	UTM: Zone 16, E 497460, N 3385280
8SR1553 “Sanborn’s Rudder Site”	UTM: Zone 16, E 497440, N 3385240
8SR1552 “Rudder Gudgeon Site”	UTM: Zone 16, E 496800, N 3387360
8SR1493 “Barge off Sanborn’s”	UTM: Zone 16, E 497701, N 3385218
8SR1488 “Swing Bridge Wreck”	UTM: Zone 16, E 496880, N 3387480
8SR1485 “Marquis Basin Barge”	UTM: Zone 16, E 497531, N 3387662
8SR1484 “Barge S. of Dutchmans”	UTM: Zone 16, E 498097, N 3385108
8SR1483 “Barge at 38 marker”	UTM: Zone 16, E 498097, N 3385554
8SR1482 “Barge off Dutchmans”	UTM: Zone 16, E 498040, N 3385352
8SR1481 “Snapper Wreck”	UTM: Zone 16, E 497400, N 3385270
8SR841 “Island Mill Site”	UTM: Zone 16, E 497080, N 3386600

8SR821 “Bagdad Steam Mill”	UTM: Zone 16, E 496920, N 3385700
8SR807 “Shipyard Point”	UTM: Zone 16, E 497560, N 3385000
8SR766 “Air Dry Pilings”	UTM: Zone 16, E 497613, N 3385671
Highway 90-End Point	
8SR1487 “Cedar Wreck”	UTM: Zone 16, E
8SR1486 “Quinn Basin Barge”	UTM: Zone 16, E
8SR0985 “Bethune Schooner”	UTM: Zone 16, E

## Appendix IV Resumes of Principles

### ***Chad C. White***

PO Box 527  
Bagdad, FL 32530  
850-206-7245  
ccwdiver@yahoo.com

#### **SKILLS**

- 20 years' experience
- 1000 plus days in sat
- Saturation & Surface Supervising/ Surface Superintendent
- Pipeline repair and instillation/riser installation
- Hot taps
- Wellhead installation and wellhead decommission
- Structural inspection
- Platform installation & removal
- Salvage
- Burning
- Extensive use of various hydraulic tools
- Mesa tech operations

#### **EXPERIENCE**

12/2013- present

Ranger Offshore, Inc Houston, TX

Saturation Diver

- 24-36" pipeline hook-up/riser installation
- Clamp installation
- Burning

04/2012- 12/2013

Global Diving & Salvage, Seattle, WA

Saturation Supervisor/Saturation Diver

- well intervention and removal
- well head installation
- riser installation flange/pipeline hookup
- extensive burning
- hot tap
- tools used include split ring cutter, lathe tool, diamond wire cutter, guillotine saw, and vertical cutter
- various hydraulic tools

**02/2011- 02/2012**

**Legacy Offshore of Broussard, Louisiana**

**Saturation Diver**

- platform salvage
- decommission wells & install well heads
- extensive burning and use of hydraulic tools

**08/2005-02/2011**

**Global Diving and Salvage of Seattle, Washington**

**Saturation Diver/Saturation Supervisor**

- well intervention and removal
- well head installation
- riser installation flange/pipeline hookup
- extensive burning
- hot tap
- tools used include split ring cutter, lathe tool, diamond wire cutter, guillotine saw, and vertical cutter

**04/2003 – 05/2005**

**Deep Marine Technology of Houston, Texas**

**Supervisor/Diver**

- NDT structural inspection – Level II and III
  - From surface to (-)220'
- pipeline installation and repair
- flange and riser hookup



**04/2001 – 04/2003**

**Cal Dive International of Morgan City, Louisiana**

**Saturation Diver**

- salvage platforms
- installation, service, and repair of pipelines
- performed all work in Bay of Campeche Del Carmen, Mexico upon Sat 4

**03/2000 – 04/2001**

**Horizon Offshore of Sabine, Texas**

**Diver**

- salvage platforms
- installation, service, and repair of pipelines
- performed all work in Bay of Campeche Del Carmen, Mexico

**08/1997 – 03/2000**

**Torch Inc. of New Orleans, Louisiana**

**Saturation Diver/Diver**

- salvage work
- pipeline installation and hook-up
- work performed on Midnight Star under superintendent Danny Blake

**01/1995 – 08/1997**

**J. Ray McDermott of Amelia, Louisiana**

**Diver/Tender (broke out in 04/1997)**

- salvage and installation of platforms
- installed and repaired pipelines
- work performed on Derrick Barges
- 1997 work performed off the coast of Trinidad

## **EDUCATION**

**The Ocean Corporation Houston, Texas**

1994 Graduate Class D-248

Commercial Diver/Tender Diploma received

## **Certifications**

- Passport identification (exp. 09/11/2015)
- ADC Card – Bell/Saturation Diver Cert #6959 (exp. 07/07/2016)
- ADC Card – Mixed Gas Diving Supervisor Cert #46538

(exp. 12/11/2017)

- TWIC Card (exp. 06/21/2016)
- DCBC Card- Surface Supplied Mixed-Gas Diver Cert #20130901 (exp. 09/20/2018)
- ADAS Card – Part 3 Diver Cert #10582 (exp. 10/2018)
- KIWI- Dive Cert #A13241(exp. 01/11/2018)
- DAN O2 Provider Cert #12040W8755
- Red Cross AED & Oxygen Therapy Course
- Red Cross Essential First Aid Course
- Chevron/Safe Gulf card #SFG293470637
- Helicopter and Water Survival Certifications
- DOT HAZMAT
- HAZWOPER – 8hr Refresher Course
- Rigging Safety
- H2S Awareness

## REFERENCES

Lynn Cobb	Saturation Superintendent	850-291-3285
Herb Williams	Saturation Superintendent	985-807-3375
Brain Jamison	Bell Partner	503-730-7951

**CURRICULUM VITAE**  
**James J. Sinclair, MA**  
**15 Brigantine Court**

**St. Augustine, FL 32080**

**Cell: (239) 218-1622**

E-mail: shpwrk1@gmail.com

**EDUCATION:**

- |           |   |
|-----------|---|
| 2002      | MA in Maritime Historic Archaeology, Union Institute and University and Vermont College   |
| 1990-1995 | Post-grad work in maritime archaeology, Antioch University, Yellow Springs, OH  |
| 1980-1990 | Various apprenticeships in Conservation and Archaeology.<br><br>Continuing education through attendance at professional seminars. |
| 1976-1980 | B.A. Anthropology, Cum Laude, Franklin Pierce College, Rindge, NH   |

**AREAS OF SPECIALIZATION:**

Maritime Historic Archaeology, Historic Shipwreck Exploration and Archaeology; Artifact Conservation; Education; Museum Design and Display; Professional Speaking

**PROFESSIONAL HISTORY:**

- |           |   |
|-----------|---|
| 2014-2016 | Project Archaeologist Global Marine Exploration                               |
| 2008-2016 | Project Archaeologist Blue Water Ventures International                       |
| 2014      | Archaeologist, Odyssey Marine Steamship Central America                       |
| 2011-2014 | Project Archaeologist, IMDI-Eco Olas, INAC Republic of Panama                 |
| 2010-2012 | Project Archaeologist, 1715 Fleet Queens Jewels/Florida Bureau of Archaeology |
| 2010-2015 | Board Member ProMES trade organization  |
| 2009-2013 | Project Archaeologist Deeptrek, Wales, United Kingdom.                        |
| 2013-2016 | Project Archaeologist Seafarers Exploration Corp.                             |

2008 Project Archaeologist, Lusitania Project, Odyssey Marine and JWM Productions/ Republic of Ireland

2004-2007 Project Archaeologist Le Chemeau Ltd./ Nova Scotia Dept of Historic Resources, 1725 French Transport and associated wrecks

1983-2010 Project Archaeologist to Mel Fisher Center Inc./ Florida Bureau of Archaeology 1715 Fleet Wrecks

1980-2016 Project Archaeologist to Motivation Inc. Key West, FL/ NOAA

2001 Chief Archaeologist, Atlantic Sands Expedition, 16000 ft. manned submersible – historic period shipwreck expedition.

2000-2001 Titanic 2000 Expedition Chief Archaeologist, RMS Titanic Inc/ 4 district Federal Courts, USA

1999 2016 Incorporated, SEAREX, Inc. Marine Archaeological Consulting firm.

1995-1998 Consultant to McKee Treasure Coins, Cayman Islands

1990-1995 Vice President, SEAS, Inc.

1990-1992 Site archaeologist and conservator, Nuestra Senora del Pilar y Zaragoza, 1690 Territory of Guam, USA 1989.

1983-1990 Atlantic Alliance for Maritime History, Lecturer for field schools in underwater archaeology for sport divers throughout United States

1980-1990 Archaeologist/ Conservator, Nuestra Senora de Atocha, 1622 Treasure Salvors Inc. Key West, FL

1988 Consultant, the Flor de la Mar Project, Jakarta, Indonesia

Consultant, the Issac Allerton (mid- 19th c. merchant man wrecked near the Saddlebunch Keys, FL)

1982-1988 Remote sensing, aerial photogrammetry and archaeological mapping of the 1715 Plate Fleet area. (Included the wrecks of six Spanish galleons.)

1987 Co-director, preliminary survey of late 19th c. shipwreck in the Key Largo National Marine Sanctuary in association with The Alliance for Maritime History Conservation and The National Oceanic and Atmospheric Administration (NOAA)

1987 Consultant, Jupiter Wrecks Inc./ Florida Bureau of Archaeology for the preliminary mapping of the Spanish vessel San Miguel de Archangel, circa 1685 at Jupiter Inlet, Fl

1985-1987 Co-director, archaeological excavation, the Nuestra Senora de Atocha 1622, Chief Conservator, Treasure Salvors Inc. Key West, Fl.

1984-1986 Expedition leader, Cedam International Expedition to St. Eustatius N.A. Archaeological mapping, Orangstead Bay

- 1984-1985 Preliminary survey Veracruz Harbor and adjacent waters. (Privately funded project led to the discovery of the U.S. Sommers)
- 1981-2016 Assisted in remote sensing and archaeological mapping of the Santa Margarita and the Nuestra Senora de Atocha, 1622
- 1984 Mapping and Assessment of environmental conditions on Revolutionary War Shipwrecks, Mullica River, NJ. Field Schools Conducted by the Atlantic Alliance and The State of N.J.
- 1981 Participated in raising of the Santa Margarita, 1622, hull structure

### **CONSERVATION AND CURATORIAL EXPERIENCE:**

- 2011-14 Consulting Conservator IMDI/ ECO OLAS and Republic of Panama
- 2000-07 Consulting Conservator Mel Fisher Center, 1715 Fleet Wrecks
- 2000-01 Consulting Conservator RMS Titanic Inc.
- 1990-95 Chief Conservator and Curator of Collections SEAS Inc. Key West, Fl.
- 1992 Chief Conservator Nuestra Senora del Pilar, 1691: Guam
- 1982-07 Curator and conservator for assemblage of materials recovered from the wrecks of the 1715 Plate Fleet for Cobb Coin Co. Inc. Sebastian Fl.  
Curator and conservator for assemblage of materials from the Henrietta Marie, (1700 English slave ship,) Treasure Salvors Inc. Key West, Fl
- 1981-07 Curator and conservator for assemblage of materials recovered from the Nuestra Senora de Atocha and the Santa Margarita, 1622 Treasure Salvors Inc. Key West, Fl

### **EXHIBITION EXPERIENCE:**

- 2001 Consultant Titanic Exhibit, Chicago Museum of Science and Industry
- 1990-95 Designed and implemented traveling exhibit of SEAS Inc. toured approx. 90 Cities throughout the USA in Guild Jewelry Stores. Names and Dates Available upon request.
- 1986 Children's Museum, Indianapolis, IN
- 1983 Permanent Exhibit, 200 Greene St., Key West, Fl



1982	Martello Museum, Key West Art and Historical Society, Key West, FL
1982	US Customs House, Baltimore MD.
1982	Convention Center, Mallory Square, Key West, FL
1981	Museum of Science, Jacksonville, FL
1981	Washington D.C., National Geographic Society, Explorers Hall
1981	Queens Museum and Chase Manhattan Bank, Flushing Meadows, NY

**PUBLIC LECTURES:**

2016	Searex Field Event, Spanish Main Antiques St Augustine FL
2015	Rotary Club Palatka FL. St Augustine Pirate Museum
2004	Planet Ocean: new paradigms for shipwreck investigation, UI2004
2003	Shipwrecks, Archaeological Treasures of the Deep, North Carolina Museum of Natural History
2002	Hidden Treasures Lecture for the benefit of the Cleveland Clinics, Children's Hospital Center for Autism, in conjunction with the Cleveland Museum of Science and RMS Titanic Inc.
2002	Lecture at Massachusetts Institute of Technology (MIT), on the Coconut wreck first historic period ship investigated in 16,000fsw
2001	Presented Preliminary Archaeological Report RMS Titanic, Underwater Intervention (UI 2001)
2001	Lecturer Oceanology International Conference of the Americas
2001	Lecturer and instructor, South Florida Museum of Natural History
2001	Guest Lecturer, Maui Ocean Center, HI
1999	Guest Speaker, BIG ARTS, Sanibel, FL
1997-98	Guest Speaker, Mckee Treasure Coins, Cayman Islands
1990-95	Speaker for SEAS Inc. 90 cities around US
1987	Guest Lecturer, University of Kentucky archaeology seminar
1987	Guest Lecturer, University of Hawaii, Marine Options Program

- 1986            Guest Speaker, Newfound Harbor Marine Institute, Big Pine Key, FL
- 1986            Guest Speaker, Annual meeting SHA-CUA, Sacramento CA
- 1985            Workshop, Florida Institute of Technology, Sponsored by the Atlantic Alliance
- 1985            Guest Speaker, Newfound Harbor Marine Institute, Big Pine Key, FL
- 1985            Key West Workshop on Underwater Archaeology Sponsored by The Atlantic Alliance
- 1985            NJ Workshop: Introduction to Underwater Archaeology. Sponsored by The Atlantic Alliance
- 1984            Motivational Keynote speaker for Scotts Restaurants, Canada. Search for Success Lecture Series.
- 1984            Guest Speaker, The Atlantic Alliance Conference, N. Carolina

## **PUBLICATIONS:**

“Titanic 2000 Final Field Report” published by RMS Titanic 2010.

“The Coconut Wreck” Published in the proceedings of the 2002 conference on Deep Sea Archaeology,

Massachusetts Institute of Technology (MIT)

Archaeology of the Titanic, Explorers Club Journal, Fall 2001

Just a Coin or Two, thoughts on the conservation of the silver coinage of the Nuestra Senora de Atocha, 1622: Institute of Marine Archaeological Conservation Digest, 2000

Preliminary Archaeological Report, RMS Titanic, RMS Titanic Web Site and IMAC Digest

Archaeology of the Titanic Series, Published through RMS Titanic Inc. Web Site.

Treasure Hunters and Archaeologists, A Historical Perspective: Published through Institute of Marine Archaeological Conservation.

Seabed to show case the conservation of metal objects from underwater sites:  
Published by Seafarers Heritage Journal, 1987

Florida East Coast Shipwreck Project 1982,1983,1984,1999,2000, 2001,2002,2003, 2004: limited publication through State of Florida, Department of Archaeological Research

### **PROFESSIONAL PRESENTATIONS:**

Private Public Partnerships in Underwater Archaeology: Beneath the Sea conference 2003

The Piña Colada wreck: Presented at MIT, Deep-sea Archaeology Conference, 2002

Archaeology and the role of the private sector: Underwater Intervention, 2002

Archaeology and the Titanic: Presented at Oceanology International Conference, 2001

Preliminary archaeological report RMS Titanic: Presented at Underwater Intervention 2001

Swords of the Atocha: Presented at the 1988 SHA-CUA, Reno NV

Silver From the Atocha: a glance at merging Spanish/Indian artistic traditions.  
Presented at the 1987 SHA-CUA annual meeting, Savanna, Ga.

### **References Provided Upon Request**

**Kenyan Murrell**

3149 Deep Water Circle,

Milton Fl. 32583

850 723 2693

**Education:**

2006 Milton High School

2011 Pensacola State College. AA Degree with focus on History

2015 University of West Florida. BA Degree Anthropology with Specialization in Archaeology

**Work Experience:**

May-July 2014: UWF Combined Maritime and Terrestrial Field School. (Student)

September-November 2015: Northwest Commercial Dive Services. (Dive Tender)

November-Current 2015: Logging Beast LLC. (Master Deadhead Logger)

January- Current 2016: Panamerican Consultants Inc. (Archaeological Field Technician)