



584760

5

TRAIL RIDGE LANDFILL, INC.

5110 U.S. Highway 301 South
Baldwin, Florida 32234-3608
(904) 289-9100
(904) 289-9013 Fax

January 28, 2011

Brian Durden
Florida Department of Environmental Protection
7825 Baymeadows Way, Suite 200B
Jacksonville, FL 32256-7598

Re: Trail Ridge Landfill Storm Event Erosion Notice

Dear Mr. Durden,

Per the telephone and email notification that was sent to you on January 26th, this letter is to inform you that Trail Ridge Landfill experienced erosions due to a 3.02-inch storm event that occurred on January 25, 2011. The event caused erosions and other minor issues as listed below. The following is a detailed description of the damage, as well as the repair schedule as required per the facility's permit.

Stormwater Pond 2**Storm Related Issues:**

A minimal amount of sediment was transported to the pond via the stormwater conveyance system located to the south of the pond. The stormwater conveyance system and sediment was free of any refuse or debris. In addition to the sediment, a small amount of litter, mostly blown, was also found in the pond. The pond did discharge, and samples were taken per a prior request made by the Florida Department of Environmental Protection. The pictures provided below, as well as the one provided in the January 26th email, illustrate the extent of the items discussed above:



(Northern Section of SW Pond 2 With Minor Debris)

RECEIVED**FEB 4 2011****NORTHEAST DISTRICT
DEP-JACKSONVILLE**



TRAIL RIDGE LANDFILL, INC.

5110 U.S. Highway 301 South
Baldwin, Florida 32234-3608
(904) 289-9100
(904) 289-9013 Fax



(Southern Section of SW Pond 2 With Deposited Sediment)



(Discharge Sampling at SW Pond 2)

Stormwater Pond Cleanup:

The cleanup of Stormwater Pond 2 began immediately following the storm event. The debris was removed from the northern portion of the pond. In addition, the stormwater conveyance systems were inspected to ensure that no additional debris was present. The pictures provided below illustrate the cleanup efforts.



(Northern Section of SW Pond 2 With Debris Removed)

From everyday collection to environmental protection, Think Green[®]. Think Waste Management.



TRAIL RIDGE LANDFILL, INC.

5110 U.S. Highway 301 South
Baldwin, Florida 32234-3608
(904) 289-9100
(904) 289-9013 Fax



(Stormwater Conveyance System Located on Southern Section of SW Pond 2)



(Stormwater Conveyance System Located on Southern Perimeter of Landfill)

Western, Southern & Eastern Slopes:

Storm Related Issues:

The storm event caused erosions along the uncapped portions of the landfill, specifically on the western, southern and eastern slopes. The erosions transported sediment into the stormwater collection system and structures located on the landfill. The following pictures further demonstrate the storm related issues.



(Erosions Along Eastern Slope of Landfill)

From everyday collection to environmental protection, Think Green®. Think Waste Management.



TRAIL RIDGE LANDFILL, INC.

5110 U.S. Highway 301 South

Baldwin, Florida 32234-3608

(904) 289-9100

(904) 289-9013 Fax



(Erosions Along Southern Slope of Landfill)



(Sediment in Stormwater Pipe Along Southern Slope)



(Erosions Along Western Slope of Landfill)

From everyday collection to environmental protection, Think Green®. Think Waste Management.



TRAIL RIDGE LANDFILL, INC.

5110 U.S. Highway 301 South
Baldwin, Florida 32234-3608
(904) 289-9100
(904) 289-9013 Fax

Western, Southern & Eastern Slope Cleanup:

The cleanup of landfill slopes began immediately following the storm event. Additional equipment and labor have been obtained to facilitate the prompt repair of the affected areas. The initial focus has been with the immediate covering of any exposed refuse and removal of sediment from the stormwater collection system. In addition, the installation of additional stormwater collection piping, re-grading of the affected terraces and hand collection of any blown/exposed litter. A major seeding event has also been scheduled for upcoming month. The pictures below illustrate the early efforts that are currently underway.



(Sediment Removal & Pipe Installation Along Southern Slope)



(Sediment Removal & Pipe Installation Along Southern Slope)

Summary:

As previously stated and discussed with your office, the cleanup has started from the stormwater pond and worked outward. Our full attention and efforts will be given to the cleanup efforts to ensure a prompt resolution to the aforementioned issues. The target completion date for the repair of the erosions and cleaning of the stormwater collection system is February 14, 2011. The installation of the additional stormwater piping and seeding event will follow. The above plans are obviously contingent on more favorable weather patterns and the absence of any unforeseen problems or concerns. We will promptly contact you if any issues arise that may alter the completion date set forth above.



TRAIL RIDGE LANDFILL, INC.

5110 U.S. Highway 301 South
Baldwin, Florida 32234-3608
(904) 289-9100
(904) 289-9013 Fax

We appreciate your considerations and please contact us with any further questions or comments at (904) 289-9100.

Sincerely,

A handwritten signature in black ink, appearing to read 'Edward Schmalfeld II'.

Edward Schmalfeld II, P.E.
District Manager

CC: Emerson Raulerson, FDEP
Jeff Foster, City of Jacksonville
Gregory Mathes, Waste Management
Jim Christiansen, Waste Management
Eric Parker, Waste Management



TRAIL RIDGE LANDFILL, INC.

5110 U.S. Highway 301 South
Baldwin, Florida 32234-3608
(904) 289-9100
(904) 289-9013 Fax

January 28, 2011

Brian Durden
Florida Department of Environmental Protection
7825 Baymeadows Way, Suite 200B
Jacksonville, FL 32256-7598

Re: Trail Ridge Landfill Storm Event Erosion Notice

Dear Mr. Durden,

Per the telephone and email notification that was sent to you on January 26th, this letter is to inform you that Trail Ridge Landfill experienced erosions due to a 3.02-inch storm event that occurred on January 25, 2011. The event caused erosions and other minor issues as listed below. The following is a detailed description of the damage, as well as the repair schedule as required per the facility's permit.

Stormwater Pond 2

Storm Related Issues:

A minimal amount of sediment was transported to the pond via the stormwater conveyance system located to the south of the pond. The stormwater conveyance system and sediment was free of any refuse or debris. In addition to the sediment, a small amount of litter, mostly blown, was also found in the pond. The pond did discharge, and samples were taken per a prior request made by the Florida Department of Environmental Protection. The pictures provided below, as well as the one provided in the January 26th email, illustrate the extent of the items discussed above:



(Northern Section of SW Pond 2 With Minor Debris)

RECEIVED
FEB 4 2011
NORTHEAST DISTRICT
DEP-JACKSONVILLE



TRAIL RIDGE LANDFILL, INC.

5110 U.S. Highway 301 South
Baldwin, Florida 32234-3608
(904) 289-9100
(904) 289-9013 Fax



(Southern Section of SW Pond 2 With Deposited Sediment)



(Discharge Sampling at SW Pond 2)

Stormwater Pond Cleanup:

The cleanup of Stormwater Pond 2 began immediately following the storm event. The debris was removed from the northern portion of the pond. In addition, the stormwater conveyance systems were inspected to ensure that no additional debris was present. The pictures provided below illustrate the cleanup efforts.



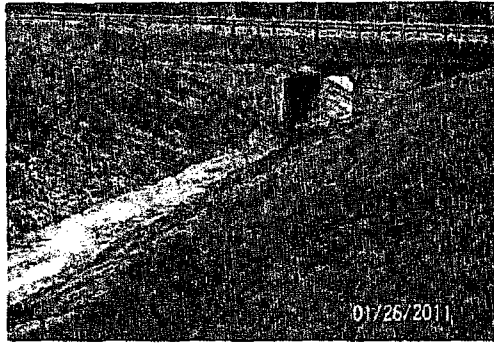
(Northern Section of SW Pond 2 With Debris Removed)

From everyday collection to environmental protection, Think Green®. Think Waste Management.



TRAIL RIDGE LANDFILL, INC.

5110 U.S. Highway 301 South
Baldwin, Florida 32234-3608
(904) 289-9100
(904) 289-9013 Fax



(Stormwater Conveyance System Located on Southern Section of SW Pond 2)



(Stormwater Conveyance System Located on Southern Perimeter of Landfill)

Western, Southern & Eastern Slopes:

Storm Related Issues:

The storm event caused erosions along the uncapped portions of the landfill, specifically on the western, southern and eastern slopes. The erosions transported sediment into the stormwater collection system and structures located on the landfill. The following pictures further demonstrate the storm related issues.



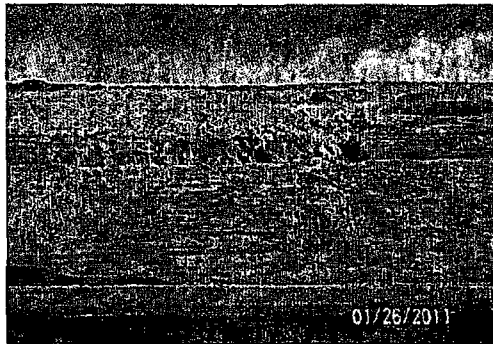
(Erosions Along Eastern Slope of Landfill)

From everyday collection to environmental protection, Think Green[®]. Think Waste Management.

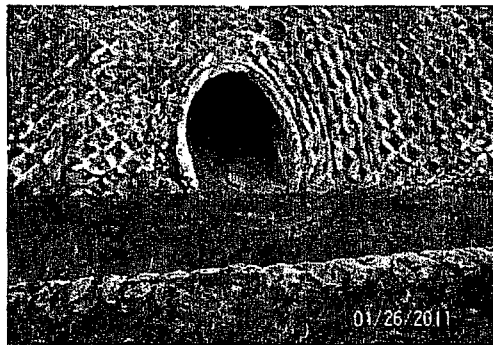


TRAIL RIDGE LANDFILL, INC.

5110 U.S. Highway 301 South
Baldwin, Florida 32234-3608
(904) 289-9100
(904) 289-9013 Fax



(Erosions Along Southern Slope of Landfill)



(Sediment in Stormwater Pipe Along Southern Slope)



(Erosions Along Western Slope of Landfill)

From everyday collection to environmental protection, Think Green[®]. Think Waste Management.

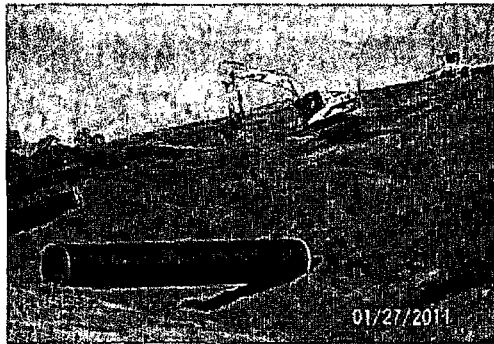


TRAIL RIDGE LANDFILL, INC.

5110 U.S. Highway 301 South
Baldwin, Florida 32234-3608
(904) 289-9100
(904) 289-9013 Fax

Western, Southern & Eastern Slope Cleanup:

The cleanup of landfill slopes began immediately following the storm event. Additional equipment and labor have been obtained to facilitate the prompt repair of the affected areas. The initial focus has been with the immediate covering of any exposed refuse and removal of sediment from the stormwater collection system. In addition, the installation of additional stormwater collection piping, re-grading of the affected terraces and hand collection of any blown/exposed litter. A major seeding event has also been scheduled for upcoming month. The pictures below illustrate the early efforts that are currently underway.



(Sediment Removal & Pipe Installation Along Southern Slope)



(Sediment Removal & Pipe Installation Along Southern Slope)

Summary:

As previously stated and discussed with your office, the cleanup has started from the stormwater pond and worked outward. Our full attention and efforts will be given to the cleanup efforts to ensure a prompt resolution to the aforementioned issues. The target completion date for the repair of the erosions and cleaning of the stormwater collection system is February 14, 2011. The installation of the additional stormwater piping and seeding event will follow. The above plans are obviously contingent on more favorable weather patterns and the absence of any unforeseen problems or concerns. We will promptly contact you if any issues arise that may alter the completion date set forth above.



TRAIL RIDGE LANDFILL, INC.

5110 U.S. Highway 301 South
Baldwin, Florida 32234-3608
(904) 289-9100
(904) 289-9013 Fax

We appreciate your considerations and please contact us with any further questions or comments at (904) 289-9100.

Sincerely,

A handwritten signature in black ink, appearing to read 'Edward Schmalfeld II', written over a horizontal line.

Edward Schmalfeld II, P.E.
District Manager

CC: Emerson Raulerson, FDEP
Jeff Foster, City of Jacksonville
Gregory Mathes, Waste Management
Jim Christiansen, Waste Management
Eric Parker, Waste Management