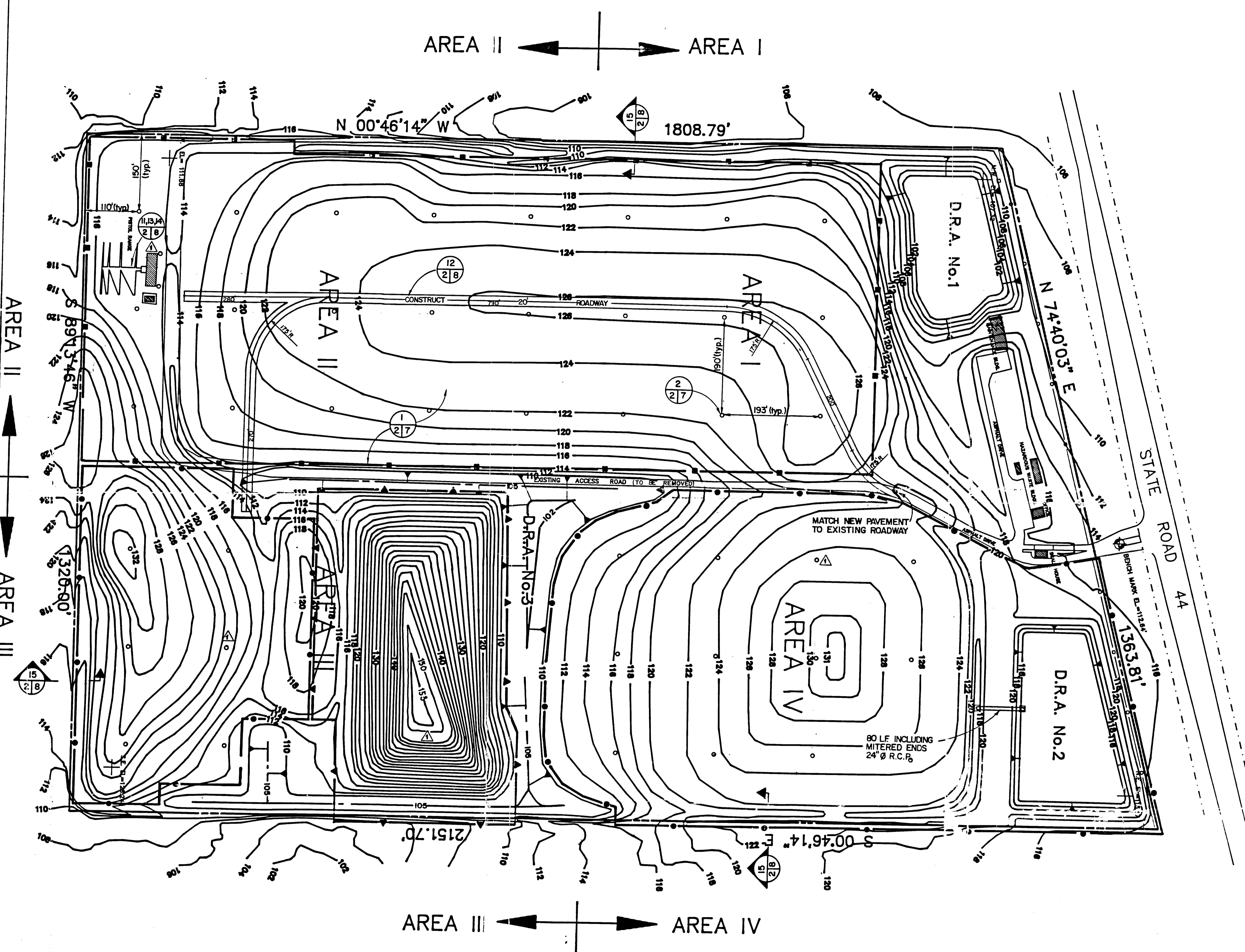


LEGEND

| SYMBOL | DESCRIPTION |
|---------------------------------|--|
| | PROPOSED CONTOUR AND ELEVATION, ELEVATION RELATIVE TO NGVD+29, DERIVED FROM F.D.O.T. BENCHMARK |
| | EXISTING CONTOUR (SHEET N°3 thru 6) |
| $\frac{N\ 3390.67}{E\ 3727.72}$ | ASSUMED COORDINATES |
| | GROUND TARGET |
| | PROPERTY BOUNDARY |
| | EXISTING STRUCTURE |
| | SECTION AND DETAIL DESIGNATION |
| | SHEET N° WHERE SECTION/DETAIL IS SHOWN |
| | SHEET N° WHERE SECTION/DETAIL IS FIRST INDICATED |
| | CULVERT W/ MITERED ENDS |
| | SLOPE |
| | RETENTION AREA |
| | PROPOSED SPOT ELEVATION |
| | EXISTING SPOT ELEVATION |
| | APPROXIMATE BOUNDARY OF AREAS THAT ARE NOT A PART OF THE CONTRACT |
| | LIMITS OF 30 ml PVC LINER |
| | APPROXIMATE BOUNDARY OF AREAS FOR SOLID WASTE RELOCATION |
| | GAS VENTILATION STRUCTURE |



| BY B.T. | | GAS VENTS FOR PHASE II | | REVISIONS | |
|---------|---------|--------------------------|--|-----------|--|
| DATE | 1-11-89 | CONTOURS TOP OF E. MOUND | | | |
| BY | | | | | |
| DATE | | | | | |

| PRELIMINARY | | DESIGN | |
|-------------|--|--------|--|
| BY | | BY | |
| DATE | | DATE | |
| BY | | BY | |
| DATE | | DATE | |
| BY | | BY | |
| DATE | | DATE | |

DEPARTMENT OF TECHNICAL SERVICES
CITRUS COUNTY, FLORIDA
ENGINEERING DIVISION

APPROVED BY:
DATE 12-29-88

60 Acre Sanitary Landfill Closure
OVERALL SITE GRADING PLAN

SECTION _____ TOWNSHIP _____ RANGE _____

SCALE 1" = 100'

PROJECT NUMBER _____ SHEET 2 OF 8
FILE # _____