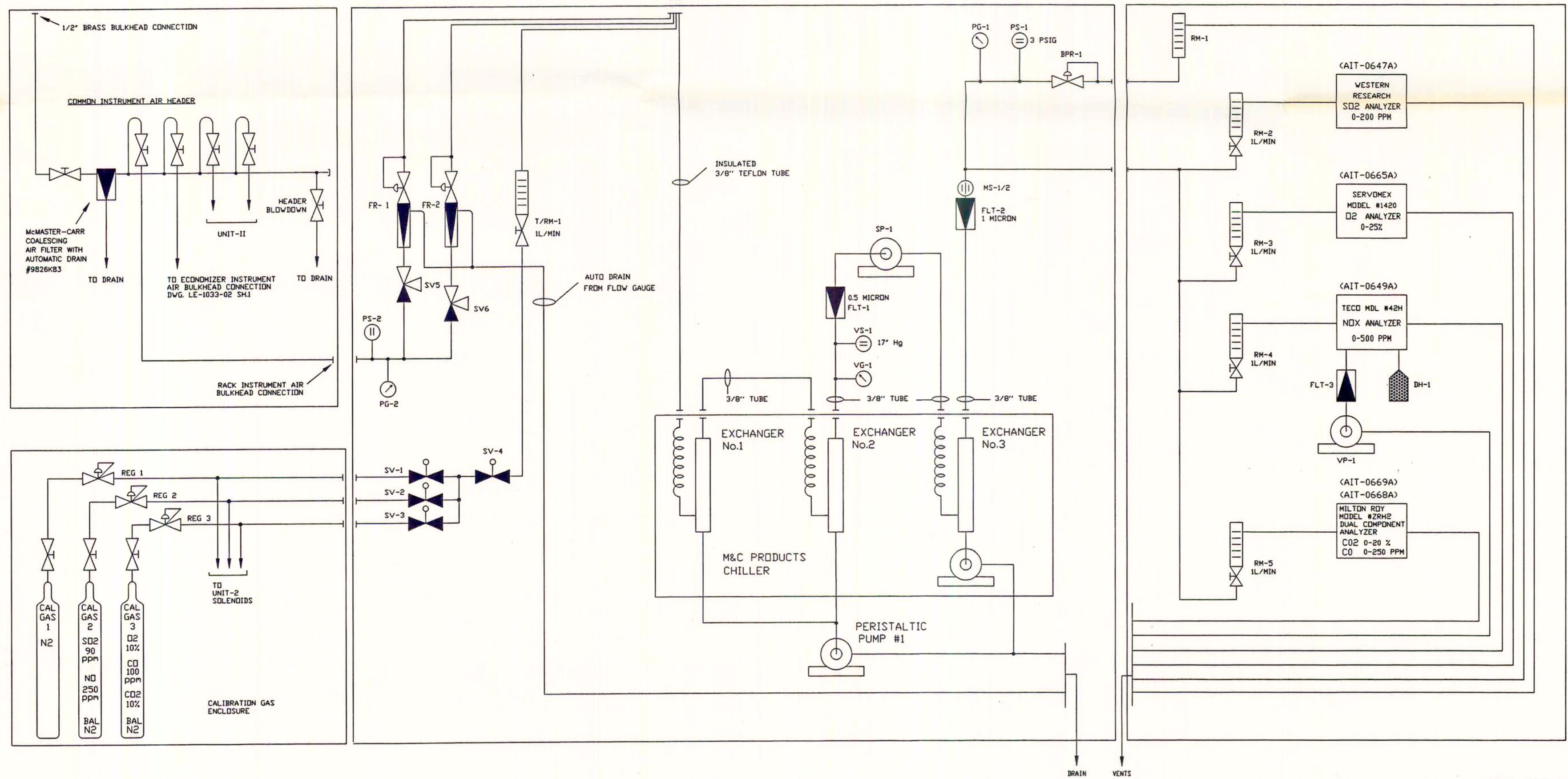
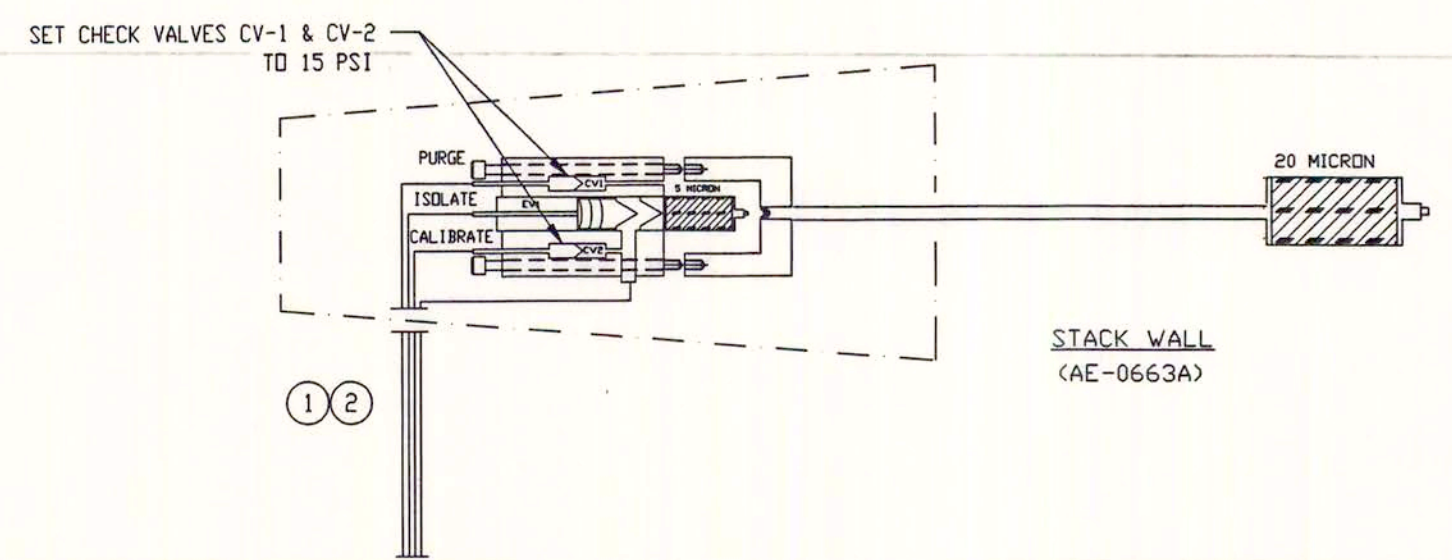


- NOTE:**
- HEATED IMBIBICAL
 - 3/8" PFA PROCESS TUBE
 - 1/4" PFA PROCESS TUBE
 - 12 AWG MESSENGER COMMUNICATION WIRES (FOR PROBE HEATER)
 - 16 AWG MESSENGER COMMUNICATION WIRES
 - 11.5WATT/208VAC CONSTANT POWER DENSITY HEATER
 - 2-CONDUCTOR 16 AWG INSULATED COMMUNICATION WIRES (FOR PROBE PT-100)
 - SAMPLE PROBE PORT IDENTIFICATION

PURGE = "R"
ISOLATE = "ST"
CALIBRATE = "N"
- PLANT INSTRUMENT AIR CONNECTION
88 - 100 PSIG
28 SCFH



REVISIONS	
1	INITIAL ISSUE RELEASED FOR REVIEW PR 03-08-93
2	ADD CO2/CO ANALYZER AS REQUESTED PR 05-20-93
3	REV. PER U&C 5-3-93 COMMENTS. PR 05-27-93

NOTES

- BOILER 101 INSTRUMENTS ARE SHOWN. BOILER 201 INSTRUMENTS ARE SIMILAR AND ARE TAGGED WITH SUFFIX "-B". (EXAMPLE: AIT-0647B)

COMPANY CONFIDENTIAL

This drawing and all information contained herein are the property of Ogden Martin Systems of LEE Inc. and are not to be used except as expressly authorized in writing by said company.

OGDEN MARTIN SYSTEMS OF LEE, INC.
SAMPLE SYSTEM FLOW DIAGRAM
STACK OUTLET

OGDEN PROJECTS, INC.			
DATE	DESIGNED	DATE	SCALE
PR 02/23/93	PR 02/23/93	LEE	
CHECKED	DATE	PROJECT NO.	SCALE
1/1			
APPROVED	DATE	DRAWING NO.	SHEET OF REV.
(Signature)	1/1	LE-1033-02	2 OF 3



LE022-3
06-21-93