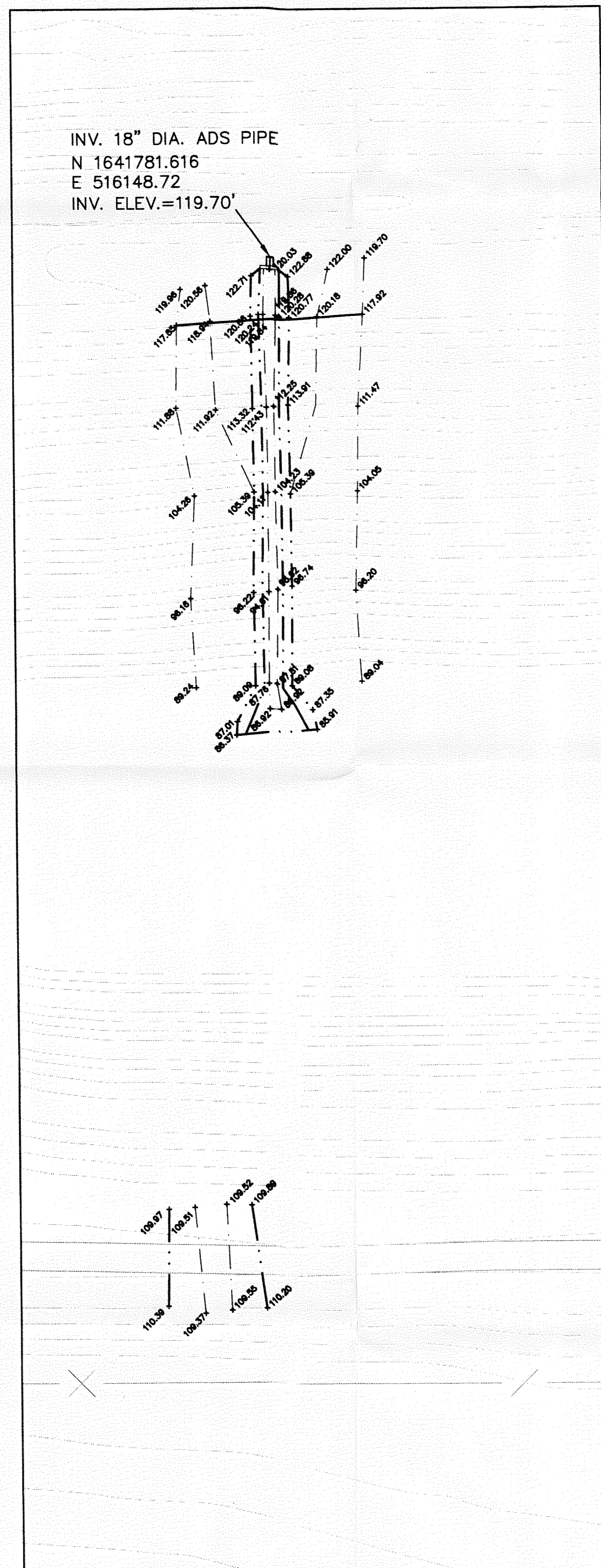
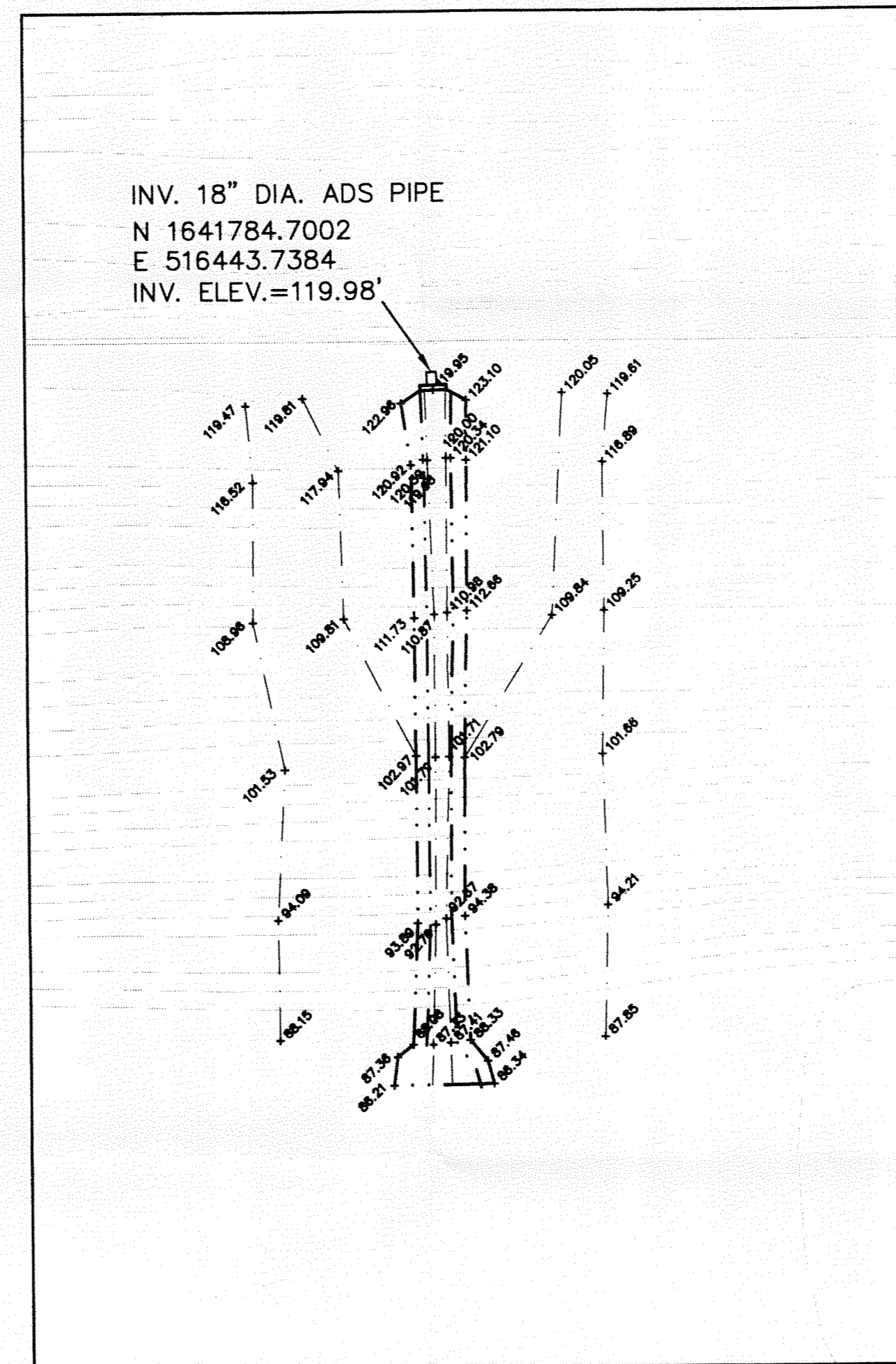


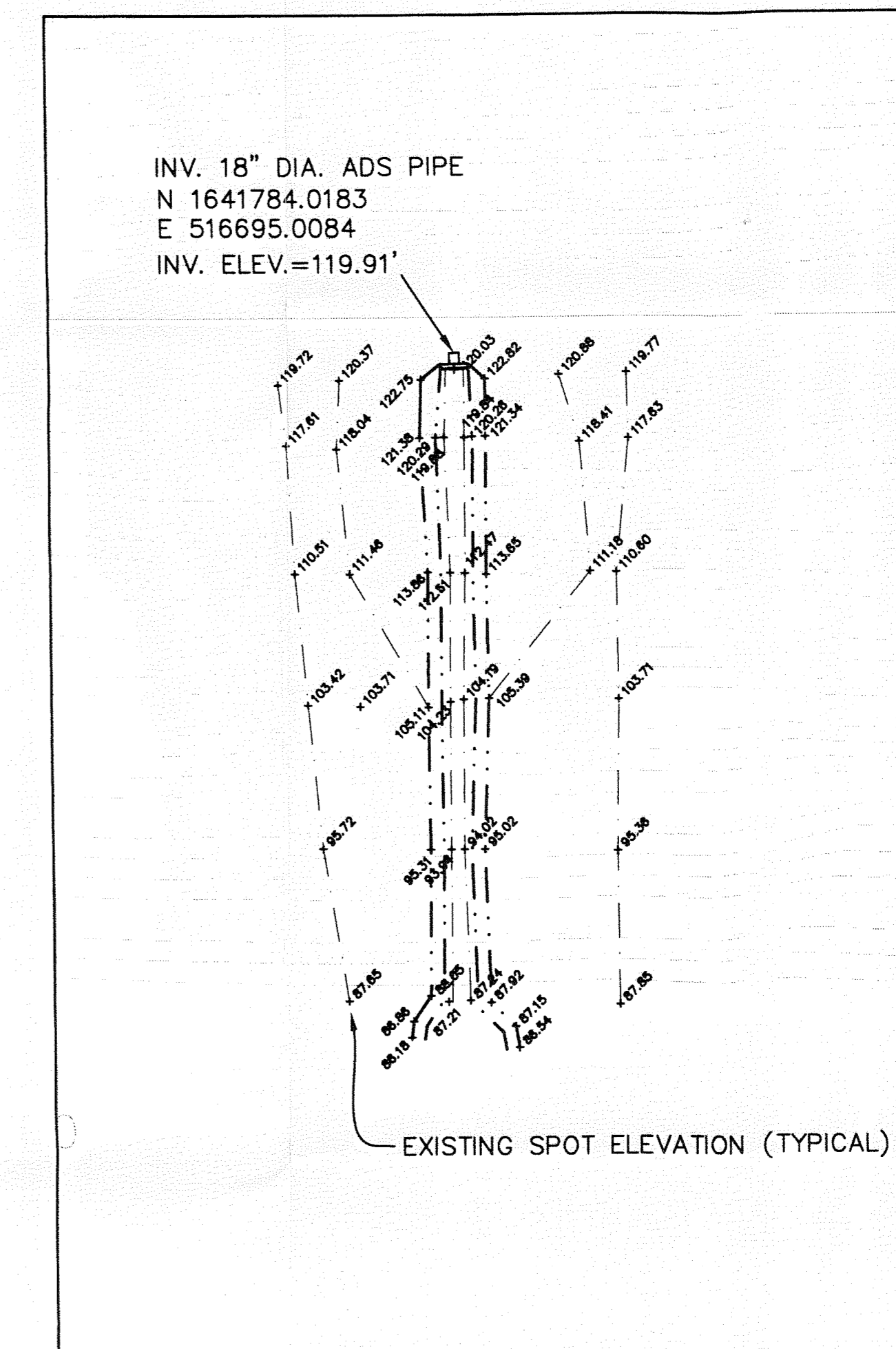
REVETMENT SPILLWAY #1
AND OVERFLOW SWALE



REVETMENT SPILLWAY #2



REVETMENT SPILLWAY #3



- NOTES**
- 1) COORDINATES SHOWN HEREON ARE STATE PLANE COORDINATES FOR THE FLORIDA WEST ZONE PER NATIONAL GEODETIC SURVEY CONTROL POINTS "CITRUS 13" AND "CITRUS 14".
 - 2) ELEVATION SHOWN HEREON ARE BASED ON THE NATIONAL GEODETIC VERTICAL DATUM OF 1929 PER NATIONAL GEODETIC SURVEY CONTROL POINTS "CITRUS 13" AND "CITRUS 14".
 - 3) DIMENSIONS SHOWN HEREON ARE IN FEET AND DECIMALS THEREOF.
 - 4) THIS SURVEY IS NOT VALID WITHOUT THE SIGNATURE AND THE ORIGINAL RAISED SEAL OF A FLORIDA LICENSED SURVEYOR AND MAPPER.
 - 5) THERE ARE EXISTING ABOVE GROUND AND UNDERGROUND UTILITIES THAT HAVE NOT BEEN LOCATED OR SHOWN FOR THE PURPOSE OF THIS SURVEY.

REVETMENT SPILLWAY
SHEET 19 OF 20

DATE	05/10/10	RECORD SURVEY CITRUS COUNTY CENTRAL LANDFILL 7 ACRE RECLOSURE AND LANDFILL GAS SYSTEM CITRUS COUNTY, FLORIDA
FIELD BOOK AND PAGE	360/PGS 66-67	
DRAWN BY	SEB	
APPROVED	SEB	
SCALE	1" = 20'	

BBL SURVEYORS & MAPPERS INC.
 1502-A RAILHEAD BLVD.
 NAPLES, FLORIDA 34110
 PHONE (239) 597-1315

Z:\PROJECTS\0909\0909_CITRUS COUNTY LANDFILL GAS PIPE CONSTRUCTION 1900 11 18 09.dwg PRE CONST 1900 11 17 09.dwg 11/20/2008 07:53:00 AM EST