

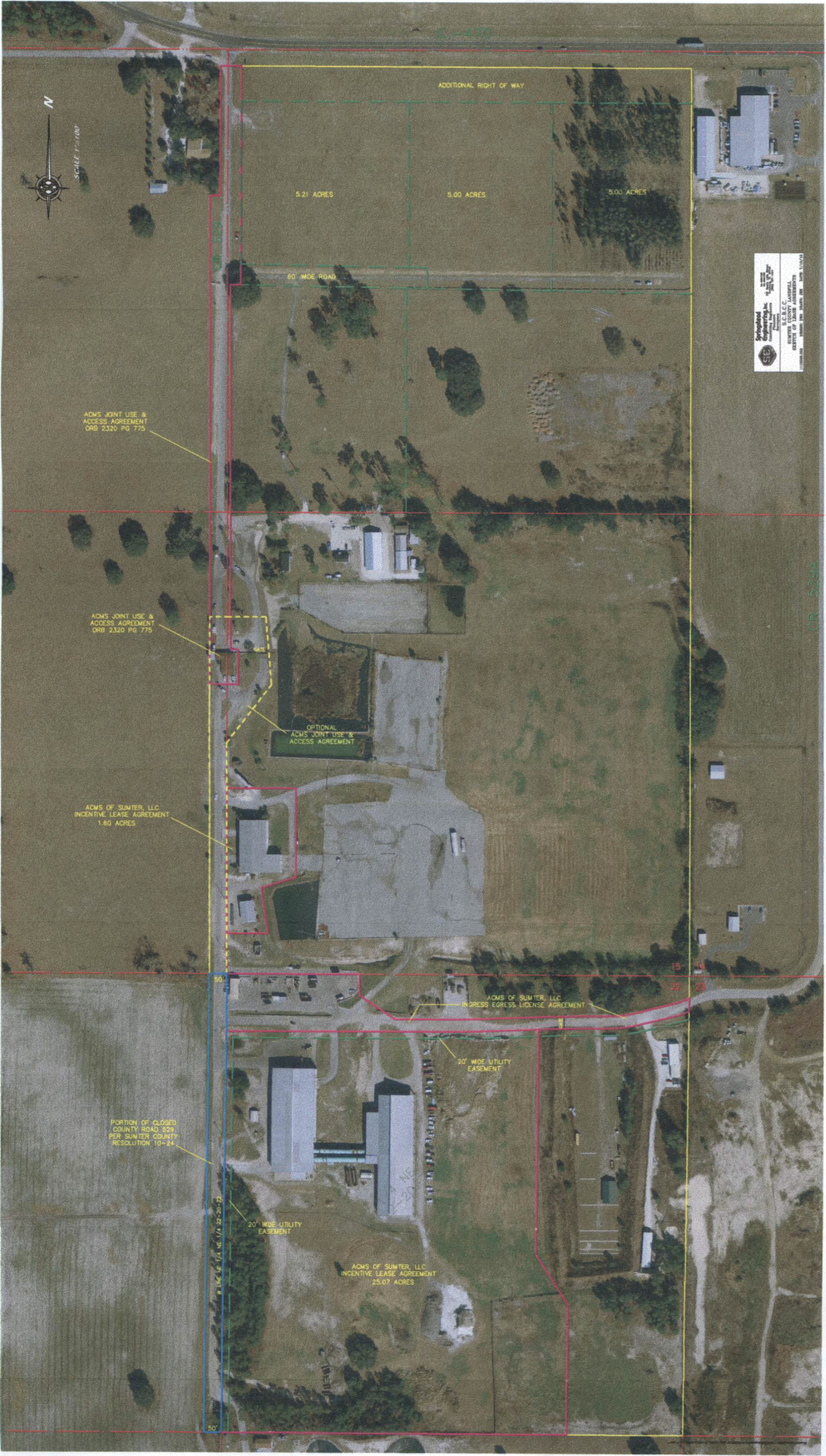
From: [Rick Potts](#)
To: [Morris, John R.](#)
Subject: Sumter County Closed Landfill - Permit Mod
Date: Monday, December 02, 2013 4:24:28 PM
Attachments: [Sumter CountyLF.LeaseMap.pdf](#)

John:

Color rendition of the site map showing ACMS lease boundaries at the Sumter County Landfill is attached. Let me know if resolution needs to be increased for viewing.

Rock

Richard L. Potts, Jr. P.G.
Principal Hydrogeologist
THE COLINAS GROUP, INC.
Water Resources Consultants
377 Maitland Avenue
Suite 2012
Altamonte Springs, FL 32701
Office: (407) 622-8176
Cell: (407) 620-5779
email: rickpotts@cfl.rr.com



Sumter County
Engineering
1000 N. 1st St.
Sumter, FL 34854
Phone: 813.486.1234
Fax: 813.486.1235
www.sumtercountyfla.gov

ADMS JOINT USE & ACCESS AGREEMENT ORB 2320 PG 775

ADMS JOINT USE & ACCESS AGREEMENT ORB 2320 PG 775

OPTIONAL ADMS JOINT USE & ACCESS AGREEMENT

ADMS OF SUMTER, LLC INCENTIVE LEASE AGREEMENT 1.80 ACRES

ADMS OF SUMTER, LLC INGRESS EGRESS LICENSE AGREEMENT

20' WIDE UTILITY EASEMENT

PORTION OF CLOSED COUNTY ROAD 829 PER SUMTER COUNTY RESOLUTION 10-24

20' WIDE UTILITY EASEMENT

ADMS OF SUMTER, LLC INCENTIVE LEASE AGREEMENT 25.07 ACRES