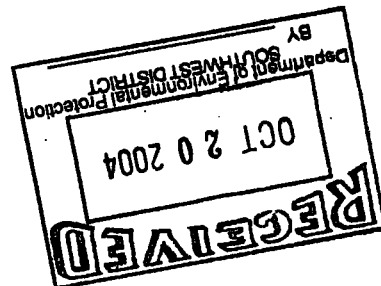




An employee-owned company

October 18, 2004



Mr. Joe Cox
Florida Department of Environmental Protection
Southwest District Office – Air Compliance Section
3804 Coconut Palm Drive
Tampa, Florida 33619-8218

**Re: Manatee County Lena Road Landfill
Facility Identification Number 0810055-003AV
Semi-Annual Report – January to June 2004**

Dear Mr. Cox:

Attached is the semi-annual report for the Lena Road Landfill in accordance with the reporting requirements of 40 CFR 60.757(f) and 40 CFR 63.1980. This report covers the period from January through June 2004.

If you should have any questions concerning this report, please contact me in our Orlando office at 407/647-7275, Ext. 4153 or Chris Gaw at Ext. 4370.

Sincerely,

Joe Miller, P.E.
Senior Project Manager

cc: Simone Core, P.E., FDEP SW District
Gus DiFonzo, Solid Waste Manager
Mike Gore, Manatee County Landfill Division
Manatee County Environmental Management Department – Air Program
File – 120498.91 9100, Semi-Annual Report – June 2004

U:\OidG\WASTEMA\Manatee County\Semi-Annual Reports\June_2004\Txmtl_Ltr_Semi-Annual Report_June2004.doc

Lena Road Landfill Semi-Annual Report

Facility ID: 0810055-003AV

January to June 2004

Prepared for



Manatee County
3333 Lena Road
Bradenton, Florida 34211

Prepared by



482 S. Keller Road
Orlando, Florida 32810

120498.91 9100

This semi-annual report is submitted in compliance with the reporting requirements of 40 CFR 60.757(f) and 40 CFR 63.1980. This report covers the reporting period from January through June 2004.

Contents

<u>Section</u>		<u>Page</u>
1.0	General Description	1-1
1.1	Site Description.....	1-1
1.2	Facility Description.....	1-1
1.3	Landfill Gas Collection System	1-1
1.4	Landfill Gas Sampling Equipment.....	1-1
2.0	Exceedance of Applicable Parameters.....	2-1
2.1	Gas Extraction Well Pressure (40 CFR 60.756(a)(1))	2-1
2.2	Landfill Gas Composition (40 CFR 60.756(a)(2)).....	2-1
3.0	Control Device: Gas Stream Diversions.....	3-1
4.0	Control Device: Periods of non-Operation	4-1
5.0	Collection System: Periods of non-Operation	5-1
6.0	Surface Emission Monitoring Exceedance	6-1
7.1	Added Wells / Collection System Expansions	7-1
 Appendix		
A	Monthly Gas Extraction Well Monitoring Results	
B	Monthly Flare Outage Summary Sheets	

1.0 General Description

1.1 Site Description

The Lena Road Landfill is located at 3333 Lena Road, Bradenton, Florida 34211. Figure 1 illustrates general location of the Lena Road Landfill.

1.2 Facility Description

The Lena Road Landfill operations involve three stages. Stage I is a closed section of the landfill that is no longer accepting waste and is comprised of about 132-acres of the site. Stage II is the 118-acre landfill expansion area north of the existing operating landfill. No refuse is located within the Stage II area. Stage III is a 66-acre area west of the Stage I area and is currently the active operating area for the landfill. The Stage III area contains refuse from an inactive landfill located within the Stage III area.

1.3 Landfill Gas Collection System

The Lena Road Landfill has an active landfill gas collection system around the Stage I portion of the landfill. The major components of the system include a candle flare, blower, and force-main collection system. There are 74 vertical and horizontal gas extraction wells and approximately 14 other sampling points within the collection system.

A vacuum exerted on the system by the blower, pulls gas into the wells and then into the force-main collection system surrounding Stage I portion of the landfill. A knockout tank is used to separate moisture and particulates from the landfill gas stream. After passing through the knockout tank, the gas is subject to controlled combustion at the LFG&E Triton CF-3000 candle flare.

1.4 Landfill Gas Sampling Equipment

Landfill gas composition and pressures were monitored with a GEM 2000 portable gas analyzer designed by CES LandTec. The GEM 2000 samples and analyzes the gas stream for methane, carbon dioxide, and oxygen content of the landfill gas. The unit also records static and dynamic pressures, when the unit is hooked up to the wellhead correctly and the transducers have been zeroed. Readings are displayed and can be stored in the instrument and downloaded to a personal computer for the purpose of reporting, analyzing, and archiving data.

2.0 Exceedance of Applicable Parameters

This section will address the value and length of time for exceedance of the applicable monitored parameters as specified under subsection 60.756(a-d).

2.1 Gas Extraction Well Pressure (40 CFR 60.756 (a)(1))

Well pressures at the gas extraction wells were monitored on a monthly basis. Valve adjustments were made for wells with a positive static pressure. In accordance with 40 CFR 60.753(g), if corrective actions are initiated within five days, the monitored exceedance is not a violation of the operating standard. The gas extraction well pressure monthly monitoring results for the reporting period are contained in Appendix A.

2.2 Landfill Gas Composition (40 CFR 60.756 (a)(2))

Gas extraction wells were analyzed on a monthly basis for oxygen content. Valve adjustments for affected wells were made for wells with an oxygen content greater than 5%. In accordance with 40 CFR 60.753(g), if corrective actions are initiated within five days the monitored exceedance is not a violation of the operating standard. The gas extraction well monthly monitoring results for the reporting period are contained in Appendix A.

3.0 Control Device: Gas Stream Diversions

There were no diversions of the landfill gas from the control device during the reporting period.

4.0 Control Device: Periods of non-Operation

Flare outages for time periods exceeding 1-hour were tallied for each day (from midnight to 11:59 p.m.) of the month. As such, a flare outage that continued past midnight into the next day was counted as a separate flare outage time period.

There were 45 periods of time exceeding a 1-hour duration during which the control device was not operational. The number of periods exceeding 1-hour in duration are listed, by month, below for the reporting period.

▪	January	0
▪	February	3
▪	March	6
▪	April	8
▪	May	7
▪	June	21

The occurrence and duration of flare outages are summarized in monthly tables in Appendix B.

5.0 Collection System: Periods of non-Operation

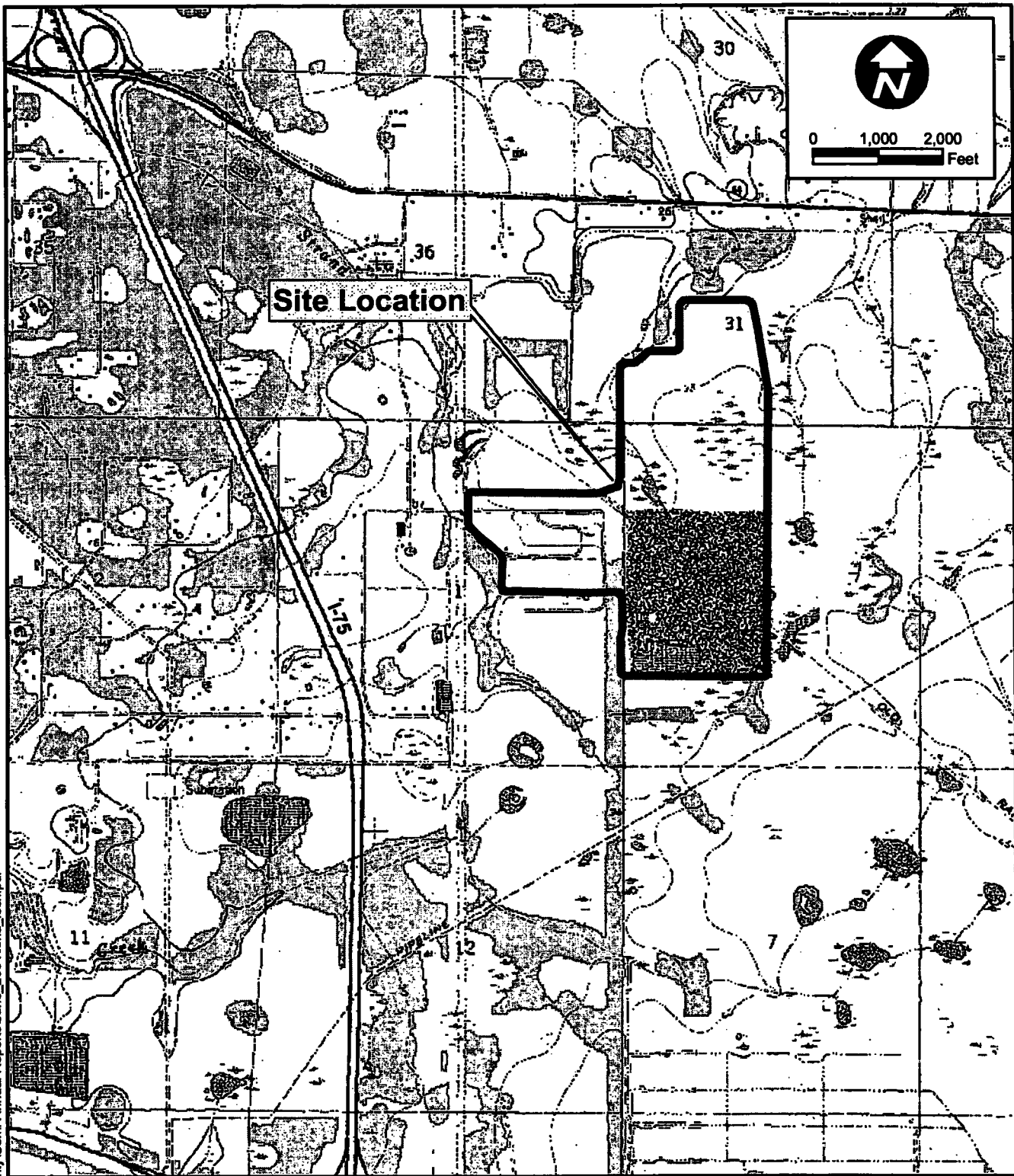
There were no periods of time exceeding five (5) days during which the collection system was not operational.

6.0 Surface Emission Monitoring Exceedance

A gas reading in excess of 500 parts per million was encountered in a wet area east of gas extraction well No. 41 during the quarterly surface emission monitoring event on June 28, 2004. There was no exceedance during the previous quarterly sampling event in March 2004. The location was rechecked for methane on July 7, 2004 and the results were less than 500 parts per million.

7.0 Added Wells / Collection System Expansions

There were no gas extraction wells added to the gas collection system. The collection system force-main system was not expanded during the reporting period.

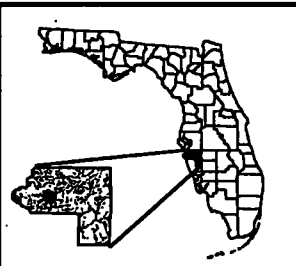


U:\CIG\WASTE\Manatee County\Semi-Annual Reports\June_2004\lena_locn.pdf

Manatee County Lena Road Landfill Location Map



Figure 1



Appendix A

Monthly Gas Extraction Well Monitoring Results

MANATEE COUNTY -- LENA ROAD LANDFILL							Facility ID: 061005-0004V
GAS EXTRACTION WELL -- MONTHLY MONITORING							
JANUARY		2004					
Well ID	Date and Time	O ₂ (%)	Pressure (Inches)	Temp. (°F)	Corrective Action	Comments / Damage	
1	2/5/2004 8:48	0.4	0	83			
2	2/5/2004 8:50	0.3	-1.3	88			
3						Well Closed, No Sample	
4						Well Closed, No Sample	
5						Well Closed, No Sample	
6	2/5/2004 10:04	4.4	-5.9	96		Well Opened	
7						Well Closed, No Sample	
8						Well Closed, No Sample	
9						Well Closed, No Sample	
10						Well Closed, No Sample	
11						Well Closed, No Sample	
12						Well Closed, No Sample	
13						Well Closed, No Sample	
14						Well Closed, No Sample	
15						Well Closed, No Sample	
16						Well Closed, No Sample	
17						Well Closed, No Sample	
18						Well Closed, No Sample	
19						Well Closed, No Sample	
20						Well Closed, No Sample	
21						Well Closed, No Sample	
22	2/5/2004 10:11	1.3	-4.3	88		Well Closed	
23						Well Closed, No Sample	
24	2/5/2004 10:14	0.4	-7.8	88		Well Closed, No Sample	
25	2/5/2004 10:17	1.1	-2	82		Well Closed, No Sample	
26						Well Closed, No Sample	
27						Well Closed, No Sample	
28						Well Closed, No Sample	
29	2/5/2004 10:22	1.2	-1.9	78		Well Closed	
30	2/5/2004 10:25	1	-2.3	85		Well Closed	
31						Well Closed, No Sample	
32	2/5/2004 10:28	1.1	-1.4	80		Thermometer Replaced	
33	2/5/2004 10:34	0.5	-10.9	88	valve adjustment		
34	2/5/2004 10:38	0.5	-13.2	78			
35	2/5/2004 10:44	0.6	-1.7	73			
36	2/5/2004 10:50	2.2	-4	90			
37	2/5/2004 10:54	0.5	-6.3	80			
38	2/5/2004 10:57	0.7	-12.4	84			
39	2/5/2004 11:00	0.9	-4.8	90			
40						Well Closed, No Sample	
41						Well Closed, No Sample	
42							
43	2/5/2004 11:05	1.4	-5.7	85			
44	2/5/2004 11:07	0.3	-5.4	90	valve adjustment		
45	2/5/2004 11:13	1	-12.7	88		Sample port replaced	
46	2/5/2004 11:18	0.7	-3.8	84			
47	2/5/2004 11:21	0.8	-8	110		Water in well	
48	2/5/2004 11:24	0.5	-2.8	113			
49	2/5/2004 11:27	0.7	-12.7	110			
50	2/5/2004 11:31	0.7	-15.4	105			
51	2/5/2004 11:34	0.9	-12.4	114			
52	2/5/2004 11:38	0.1	-12.8	112			
53	2/5/2004 11:41	0.1	-12.7	108	valve adjustment		
54	2/5/2004 11:43	0.9	-6	100			
55	2/5/2004 11:45	0.8	-12.4	100		Wellhead replaced, Resealed	
56							
57	2/5/2004 9:00	0.3	-7.4	112			
58	2/5/2004 9:18	0.4	-8.8	118			
59	2/5/2004 9:20	0.6	-5.6	112			
60	2/5/2004 9:27	1.6	-12.7	90			
61	2/5/2004 9:30	1.1	-1.1	120			
62						Well Closed, No Sample	
63						Well Closed, No Sample	
64	2/5/2004 9:32	2.8	-12.8	81			
65	2/5/2004 9:25	2.8	-12.8	82			
66	2/5/2004 9:22	1.5	-7.5	110			
67	2/5/2004 9:13	0.7	-8.3	102			
68	2/5/2004 8:58	0.4	-5.5	115			
69	2/5/2004 8:48	0.3	-12.7	108			
70	2/5/2004 8:45	0.2	-0.8	82			
71	2/5/2004 8:38	0.3	-0.8	98			
72						Well Closed, No Sample	
73	2/5/2004 8:38	0.8	-11.8	90			
74	2/5/2004 10:48	0.9	-6	82			
75	2/5/2004 10:41	0.8	-1.1	88			
76							
77							
78							
79							
80						Closed, No Sample	
81						Closed, No Sample	
82	2/5/2004 9:48	0.5				Closed, No Sample	
83						Closed, No Sample	
84						Closed, No Sample	
85						Closed, No Sample	
86						Closed, No Sample	
87						Closed, No Sample	
88						Closed, No Sample	
89						Closed, No Sample	
00000V1A	2/5/2004 9:38	0.8					
00000V1B	2/5/2004 9:40	0.9					
00000V2A	2/5/2004 9:52	1.6					
00000V2B	2/5/2004 9:44	3					
00000FLAR	2/5/2004 9:50	1.4	1.0	82			

Comments
 Well ID's 80 through 89, V1A, V1B, V2A, V2B, FLAR are sample ports. No pressure, flow or temperature data available.
 Shaded box indicates well not in acceptable range. Corrective action taken
 Acceptable Parameter Ranges : O₂ < 5% , Static Pressure < 0" H₂O, and Temperature < 131 °C

MANATEE COUNTY - LENA ROAD LANDFILL					Facility ID: 0610055-003AV	
GAS EXTRACTION WELL - MONTHLY MONITORING						
FEBRUARY		2004				
Well ID	Date and Time	O ₂ (%)	Static		Corrective Action	Comments / Damage
			Pressure (inches)	Temp. (°F)		
1	2/25/2004 7:02	0.8	0	76		
2	2/25/2004 7:05	0.4	-1.4	56		
3						Well Closed, No Sample.
4						Well Closed, No Sample.
5						Well Closed, No Sample.
6	2/25/2004 7:10	0.4	-1.1	65		Well Closed.
7						Well Closed, No Sample.
8						Well Closed, No Sample.
9						Well Closed, No Sample.
10						Well Closed, No Sample.
11						Well Closed, No Sample.
12						Well Closed, No Sample.
13						Well Closed, No Sample.
14						Well Closed, No Sample.
15						Well Closed, No Sample.
16						Well Closed, No Sample.
17						Well Closed, No Sample.
18						Well Closed, No Sample.
19						Well Closed, No Sample.
20						Well Closed, No Sample.
21						Well Closed, No Sample.
22						Well Closed, No Sample.
23						Well Closed, No Sample.
24	2/25/2004 7:19	0.8	-7.3	65	valve adjustment	
25						No Sample.
26						Well Closed, No Sample.
27						Well Closed, No Sample.
28						Well Closed, No Sample.
29						Well Closed, No Sample.
30	2/25/2004 7:35	1.1	-1.8	60		
31						Well Closed, No Sample.
32	2/25/2004 7:44	1.3	-1.3	65		
33	2/25/2004 7:51	1.3	-3.6	65		
34	2/25/2004 7:57	0.3	-13.4	70		
35	2/25/2004 8:04	0.6	-1.7	70		
36	2/25/2004 8:11	1.8	-3.8	66		
37	2/25/2004 8:18	0.2	-5.2	62		
38	2/25/2004 8:21	0.3	-12.6	64		
39	2/25/2004 8:23	0.8	-4.8	66		
40						Well Closed, No Sample.
41						Well Closed, No Sample.
42	2/25/2004 8:27	0.6	-5.3	92		
43	2/25/2004 8:30	4.0	-4.2	66		
44	2/25/2004 8:37	0.7	-12.8	60		
45	2/25/2004 8:41	1.5	-3.1	92		
46	2/25/2004 8:44	0.4	-7.8	110		
47	2/25/2004 8:48	0.2	-3	113		
48	2/25/2004 8:54	0.3	-13.1	110	valve adjustment	
49	2/25/2004 8:57	0.3	-14.4	104		
50	2/25/2004 9:02	0.2	-12.7	113		
51	2/25/2004 9:03	0.2	-13.1	112		
52	2/25/2004 9:10	0.2	-11.1	102	valve adjustment	
53	2/25/2004 9:13	0.4	-3.6	100		
54	2/25/2004 10:07	0.3	-10.4	100		
55	2/25/2004 10:18	0.8	-3.8	112	valve adjustment	
56	2/25/2004 10:18	0.8	-4.3	112		
57	2/25/2004 10:28	0.4	-10.4	116		
58	2/25/2004 10:29	0.8	-5.7	112		
59	2/25/2004 10:35	0.5	-13.1	75		
60	2/25/2004 10:38	0.4	-12.6	120		
61						Well Closed, No Sample.
62						Well Closed, No Sample.
63						
64	2/25/2004 10:38	1.2	-13.1	66		
65	2/25/2004 10:33	2.5	-13	100		
66	2/25/2004 10:30	2.5	-7.5	107		
67	2/25/2004 10:24	0.3	-10.1	66		
68	2/25/2004 10:22	0.1	-4	115		
69	2/25/2004 10:14	0.4	-12.4	110		
70	2/25/2004 10:09	0.5	-11.3	92		
71	2/25/2004 9:15	0.5	-11.3	66		
72						Well Closed, No Sample.
73	2/25/2004 9:15	0.5	-12.9	82		
74	2/25/2004 8:10	0.8	-13.5	60	valve adjustment	
75	2/25/2004 8:02	0.3	-0.5	64		
76						Closed, No Sample.
77						Closed, No Sample.
78						Closed, No Sample.
79						Closed, No Sample.
80						Closed, No Sample.
81						Closed, No Sample.
82						Closed, No Sample.
83						Closed, No Sample.
84						Closed, No Sample.
85						Closed, No Sample.
86						Closed, No Sample.
87						Closed, No Sample.
88						Closed, No Sample.
89						Closed, No Sample.
00000V1A	2/25/2004 10:46	0.3				
00000V1B	2/25/2004 10:46	0.4				
00000V2A	2/25/2004 10:47	1.8				
00000V2B	2/25/2004 10:48	1.7				
00000FLAR	2/25/2004 10:53	1.0	1.0	60		
Comments						
Well ID's 80 through 89, V1A, V1B, V2A, V2B, FLAR are sample ports. No pressure, flow or temperature data available.						
Shaded box indicates well not in acceptable range.						
Compliance: O ₂ < 5% , Static Pressure < 0" H ₂ O, and Temperature < 131 °C						

MANATEE COUNTY -- LENA ROAD LANDFILL						Facility ID: 081055-003AV
GAS EXTRACTION WELL -- MONTHLY MONITORING						
MARCH	2004					
Well ID	Date and Time	O ₂ (%)	Static Pressure (inches H ₂ O)	Temp. (°F)	Corrective Action	Comments / Damage
1	3/24/2004 8:20	5.6	-0.1	80		
2	3/24/2004 8:22	0.4	-0.1	58		
3						Well Closed, No Sample.
4	3/24/2004 8:27	0.5	-0.4	70		Well Closed.
5						Well Closed, No Sample.
6						Well Closed, No Sample.
7						Well Closed, No Sample.
8						Well Closed, No Sample.
9						Well Closed, No Sample.
10						Well Closed, No Sample.
11						Well Closed, No Sample.
12						Well Closed, No Sample.
13						Well Closed, No Sample.
14						Well Closed, No Sample.
15						Well Closed, No Sample.
16						Well Closed, No Sample.
17						Well Closed, No Sample.
18						Well Closed, No Sample.
19						Well Closed, No Sample.
20						Well Closed, No Sample.
21						Well Closed, No Sample.
22						Well Closed, No Sample.
23						Well Closed, No Sample.
24	3/24/2004 8:51	0.3	-3.8	88		
25	3/24/2004 8:54	0.9	-1.8	80		
26						Well Closed, No Sample.
27						Well Closed, No Sample.
28						Well Closed, No Sample.
29						Well Closed, No Sample.
30	3/24/2004 8:58	2.0	-2.7	81		
31						Well Closed, No Sample.
32	3/24/2004 10:58	0.5	-2.2	86		
33	3/24/2004 11:01	0.5	-4.3	85		
34	3/24/2004 11:18	0.5	-13.4	76		
35	3/24/2004 11:25	0.7	-3.7	88		
37	3/24/2004 11:32	2.4	-4.4	88		
38	3/24/2004 11:34	0.7	-5.5	82		
39	3/24/2004 11:37	0.8	-12.6	83		
40	3/24/2004 11:41	0.8	-5.1	88		
41						Well Closed, No Sample.
42						Well Closed, No Sample.
43	3/24/2004 11:47	1.0	-4.7	84		
44	3/24/2004 11:54	4.2	-4.0	80		
45	3/24/2004 12:00	1.0	-12.6	88		
46	3/24/2004 12:02	0.8	-3.2	86		
47	3/24/2004 12:08	0.5	-7.9	110		
48	3/24/2004 12:16	0.8	-3.9	102		
49	3/24/2004 12:30	0.6	-12.5	110		
50	3/24/2004 12:33	0.5	-18.0	105		
51	3/24/2004 12:36	0.3	-12.2	119		
52	3/24/2004 12:40	0.6	-12.8	113		
53	3/24/2004 12:45	0.3	-11.0	103	valve adjustment	Well Closed.
54	3/24/2004 13:04	0.8	-5.9	100		
55	3/24/2004 13:14	0.8	-10.2	88	valve adjustment	
56	3/24/2004 13:22	0.4	-8.3	118		
57	3/24/2004 13:27	0.8	-7.7	114		
58	3/25/2004 7:26	0.8	-8.8	112		
59	3/25/2004 7:38	0.2	-8.9	112		
60	3/25/2004 7:39	0.1	-13.5	82		
61	3/25/2004 8:00	0.5	-2.0	122		
62	3/25/2004 8:44	2.4	-3.3	81		
63	3/24/2004 12:10	0.5	-13.3	76		
64	3/25/2004 7:58	0.7	-13.3	80		
65	3/25/2004 7:42	0.2	-13.4	80	valve adjustment	
66	3/25/2004 7:31	1.4	-7.5	106		
67	3/25/2004 7:28	0.3	-8.9	100		
68	3/24/2004 13:30	0.5	-8.8	115		
69	3/24/2004 13:29	0.8	-12.3	110		
70	3/24/2004 13:17	0.3	-0.7	82		
71	3/24/2004 13:08	0.5	-1.4	88		
72	3/24/2004 13:09	0.8	-13.0	85		
73						Well Closed, No Sample.
74	3/24/2004 11:28	0.5	0.0	76		
75	3/24/2004 11:18	2.1	-1.4	88		
80						Closed, No Sample.
81						Closed, No Sample.
82						Closed, No Sample.
83						Closed, No Sample.
84						Closed, No Sample.
85						Closed, No Sample.
86						Closed, No Sample.
87						Closed, No Sample.
88						Closed, No Sample.
89						Closed, No Sample.
0000V1A	3/25/2004 8:07	1.5				
0000V1B	3/25/2004 8:08	0.9				
0000V2A	3/25/2004 8:12	1.4				
0000V2B						
0000FLAR	3/25/2004 8:21	1.4	1.0	82		
Comments						
Well ID's 80 through 89, V1A, V1B, V2A, V2B, FLAR are sample ports. No pressure, flow or temperature data available.						
Shaded box indicates well not in acceptable range.						
Compliance : O ₂ < 5% , Static Pressure < 0" H ₂ O, and Temperature < 131 °C						

MANATEE COUNTY -- LENA ROAD LANDFILL						Facility ID: 001005-003AV
GAS EXTRACTION WELL -- MONTHLY MONITORING						
APRIL 2004						
Well ID	Date and Time	O ₂ (%)	Static		Corrective Action	Comments / Damage
			Pressure (inches)	Temp. (°F)		
1	4/21/2004 7:38	5.8	-0.1	85		
2	4/21/2004 7:40	3.5	-2.1	80		
3						Well Closed, No Sample
4						Well Closed, No Sample
5						Well Closed, No Sample
6						Well Closed, No Sample
7						Well Closed, No Sample
8						Well Closed, No Sample
9						Well Closed, No Sample
10						Well Closed, No Sample
11						Well Closed, No Sample
12						Well Closed, No Sample
13						Well Closed, No Sample
14						Well Closed, No Sample
15						Well Closed, No Sample
16						Well Closed, No Sample
17						Well Closed, No Sample
18						Well Closed, No Sample
19						Well Closed, No Sample
20						Well Closed, No Sample
21						Well Closed, No Sample
22						Well Closed, No Sample
23						Well Closed, No Sample
24	4/21/2004 7:18	0.4	-2.9	88		
25	4/21/2004 7:20	1.2	-2.5	82		
26						Well Closed, No Sample
27						Well Closed, No Sample
28						Well Closed, No Sample
29						Well Closed, No Sample
30	4/21/2004 7:24	2.1	-3.8	80		
31						Well Closed, No Sample
32	4/21/2004 7:27	1.0	-2.2	80		
33	4/21/2004 7:29	0.5	-4.8	69		
34	4/21/2004 7:32	0.4	-13.3	75		
35	4/21/2004 7:43	2.4	-3.2	70		
37	4/21/2004 7:49	3.0	-4.3	69		
38	4/21/2004 7:51	1.3	-3.5	65		
39	4/21/2004 7:53	0.8	-12.7	63		
40	4/21/2004 7:57	1.0	-4.8	90		
41						Well Closed, No Sample
42						Well Closed, No Sample
43	4/21/2004 8:26	1.4	-4.7	95		
44	4/21/2004 8:40	4.2	-3.8	90		
45	4/21/2004 8:42	2.3	-12.7	90		
46	4/21/2004 8:45	0.4	-2.4	95		
47	4/21/2004 8:48	0.7	-7.5	110		
48	4/21/2004 8:53	0.7	-4.4	114		
49	4/21/2004 8:56	0.28	-12.8	110	valve adjustment	
50	4/21/2004 8:58	0.7	-13.0	108		
51	4/21/2004 9:01	0.28	-12.2	114	valve adjustment	
52	4/21/2004 8:04	1.3	-12.8	114		
53						Well Closed, No Sample
54	4/21/2004 8:07	0.3	-6.9	100		
55	4/21/2004 8:23	0.4	-10.0	109		
56	4/21/2004 8:26	0.7	-4.3	118		
57	4/21/2004 8:33	0.5	-7.4	114		
58	4/21/2004 10:01	0.8	-10.0	113		
59	4/21/2004 10:04	0.5	-6.7	112		
60	4/21/2004 10:11	0.7	-12.8	108		
61	4/21/2004 10:14	0.5	-1.8	122		
62	4/21/2004 7:13	1.5	-2.1	85		
63	4/21/2004 8:51	0.7	-10.7	80	valve adjustment	
64	4/21/2004 10:16	0.5	-12.9	85		
65	4/21/2004 10:09	0.28	-12.8	64	valve adjustment	
66	4/21/2004 10:06	1.5	-7.0	108		
67						
68	4/21/2004 8:57	1.1	-6.8	115		
69	4/21/2004 8:28	0.8	-12.3	110		
70	4/21/2004 8:20	0.7	-1.1	92		
71	4/21/2004 8:15	0.8	-1.8	88		
72	4/21/2004 8:13	0.9	-11.2	85		
73	4/21/2004 8:16	0.9	-11.8	91		
74	4/21/2004 7:45	2.3	-13.6	81	valve adjustment	Well Closed
75	4/21/2004 7:36	2.3	-1.4	88		
80						Closed, No Sample
81						Closed, No Sample
82						Closed, No Sample
83						Closed, No Sample
84						Closed, No Sample
85						Closed, No Sample
86						Closed, No Sample
87						Closed, No Sample
88						Closed, No Sample
89						Closed, No Sample
0000V1A	4/21/2004 10:21	1.0				
0000V1B	4/21/2004 10:23	0.8				
0000V2A	4/21/2004 10:24	1.3				
0000V2B	4/21/2004 10:25	1.9				
0000FLAR	4/21/2004 10:33	1.2	1.0	94		
Comments						
Well IDs 80 through 89, V1A, V1B, V2A, V2B, FLAR are sample ports. No pressure, flow or temperature data available.						
Shaded box indicates well not in acceptable range.						
Compliance : O ₂ < 5% , Static Pressure < 0" H ₂ O, and Temperature < 131 °C						

MANATEE COUNTY – LENA ROAD LANDFILL						Facility ID: 0510055-003AV
GAS EXTRACTION WELL – MONTHLY MONITORING						
MAY	2004					
Well ID	Date and Time	O ₂ (%)	Static Pressure (inches)	Temp. (°C)	Corrective Action	Comments / Damage
1	5/19/2004 6:46	0.4	-2.2	85		
2	5/19/2004 6:51	0.4	-2.2	85		
3						Well Closed, No Sample.
4						Well Closed, No Sample.
5						Well Closed, No Sample.
6						Well Closed, No Sample.
7						Well Closed, No Sample.
8						Well Closed, No Sample.
9						Well Closed, No Sample.
10						Well Closed, No Sample.
11						Well Closed, No Sample.
12						Well Closed, No Sample.
13						Well Closed, No Sample.
14						Well Closed, No Sample.
15						Well Closed, No Sample.
16						Well Closed, No Sample.
17						Well Closed, No Sample.
18						Well Closed, No Sample.
19						Well Closed, No Sample.
20						Well Closed, No Sample.
21						Well Closed, No Sample.
22						Well Closed, No Sample.
23						Well Closed, No Sample.
24	5/19/2004 7:13	0.7	-3.3	90		
25	5/19/2004 7:18	1.4	-1.8	85		
26						Well Closed, No Sample.
27						Well Closed, No Sample.
28						Well Closed, No Sample.
29						Well Closed, No Sample.
30	5/19/2004 7:21	2.2	-3.0	85		
31						Well Closed, No Sample.
32	5/19/2004 7:24	0.8	-2.3	90		
33	5/19/2004 7:32	1.0	-4.7	90		
34	5/19/2004 8:03	3.4	-13.1	82		
35	5/19/2004 8:57	1.1	0.0	90		
37	5/19/2004 10:02	1.3	-3.1	90		
38	5/19/2004 10:06	1.6	-4.9	85		
39	5/19/2004 10:08	0.8	-12.1	88		
40	5/19/2004 10:12	0.7	-3.7	82		
41						Well Closed, No Sample.
42						Well Closed, No Sample.
43	5/19/2004 10:16	1.2	-3.3	104		
44	5/19/2004 10:21	3.0	-2.1	95		
45	5/19/2004 10:24	0.7	-11.2	92		
46	5/19/2004 10:27	1.1	-2.8	102		
47	5/19/2004 10:28	0.8	-1.7	110		
48	5/19/2004 10:30	0.5	-2.8	115		
49	5/19/2004 10:42	0.8	-8.9	112		
50	5/19/2004 10:48	0.4	-12.5	108		
51	5/19/2004 10:50	0.8	-4.4	117		
52	5/19/2004 10:57	0.8	-12.4	119		
53						Well Closed, No Sample.
54	5/19/2004 11:00	0.5	-6.5	102		
55	5/19/2004 11:18	0.5	-11.0	102		
56	5/19/2004 11:27	0.5	-7.8	118		
57	5/19/2004 11:30	0.7	-7.2	115		
58	5/19/2004 11:38	0.4	-4.4	118		
59	5/19/2004 11:43	0.8	-4.7	114		
60	5/19/2004 11:52	0.8	-12.4	114		
61	5/19/2004 11:58	0.5	-1.7	124		
62	5/19/2004 6:59	0.5	-2.0	82		
63	5/19/2004 10:35	0.8	-8.9	90		
64	5/19/2004 11:57	0.5	-12.8	95		
65	5/19/2004 11:59	4.4	-12.4	95		
66	5/19/2004 11:45	1.1	-6.7	110		
67	5/19/2004 11:37	1.0	-4.5	105		
68	5/19/2004 11:32	0.6	-4.4	115		
69	5/19/2004 11:25	0.8	-11.4	110		
70	5/19/2004 11:22	0.8	-1.0	92		
71	5/19/2004 11:03	0.8	-1.3	100		
72	5/19/2004 11:08	4.2	-10.8	100		
73	5/19/2004 11:13	0.5	-4.4	98		
74						Well Closed.
75	5/19/2004 8:08	2.8	-0.7	90		
80						Closed, No Sample.
81						Closed, No Sample.
82						Closed, No Sample.
83						Closed, No Sample.
84						Closed, No Sample.
85						Closed, No Sample.
86						Closed, No Sample.
87						Closed, No Sample.
88						Closed, No Sample.
89						Closed, No Sample.
00000V1A						No Sample.
00000V1B						No Sample.
00000V2A						No Sample.
00000V2B						No Sample.
0000FLAR	4/21/2004 10:33	1.3	1.3	102		No Sample.
Comments						
Well ID's 80 through 89, V1A, V1B, V2A, V2B, FLAR are sample ports. No pressure, flow or temperature data available.						
Shaded box indicates well not in acceptable range.						
Compliance : O ₂ < 5% , Static Pressure < 0" H ₂ O, and Temperature < 131 °C						

MANATEE COUNTY -- LENA ROAD LANDFILL					Facility ID: 0610055-0034V	
GAS EXTRACTION WELL -- MONTHLY MONITORING						
JUNE					2004	
Well ID	Date and Time	O ₂ (%)	Static Pressure (inches)	Temp. (°F)	Corrective Action	Comments / Damage
1	6/29/2004 7:37	0.4	0.0	96		
2	6/29/2004 7:43	0.5	-1.7	79		
3						Well Closed, No Sample.
4						Well Closed, No Sample.
5						Well Closed, No Sample.
6						Well Closed, No Sample.
7						Well Closed, No Sample.
8						Well Closed, No Sample.
9						Well Closed, No Sample.
10						Well Closed, No Sample.
11						Well Closed, No Sample.
12						Well Closed, No Sample.
13						Well Closed, No Sample.
14						Well Closed, No Sample.
15						Well Closed, No Sample.
16						Well Closed, No Sample.
17						Well Closed, No Sample.
18						Well Closed, No Sample.
19						Well Closed, No Sample.
20						Well Closed, No Sample.
21						Well Closed, No Sample.
22						Well Closed, No Sample.
23						Well Closed, No Sample.
24	6/29/2004 7:59	0.6	-2.0	92		
25	6/29/2004 8:18	0.9	-0.3	92		
26						Well Closed, No Sample.
27						Well Closed, No Sample.
28						Well Closed, No Sample.
29						Well Closed, No Sample.
30	6/29/2004 8:23	1.4	-1.9	90		
31						Well Closed, No Sample.
32	6/29/2004 8:31	0.8	-1.3	86		
33	6/29/2004 8:34	0.8	-3.8	90		
34	6/29/2004 8:38	0.8	-12.7	90		
35	6/29/2004 8:44	0.5	-1.9	79		
36	6/29/2004 8:47	1.5	-2.4	92		
38	6/29/2004 8:57	0.8	-4.9	86		
39	6/29/2004 10:01	0.7	-12.0	90		
40	6/29/2004 10:04	0.7	-3.8	92		
41						Well Closed, No Sample.
42						Well Closed, No Sample.
43	6/29/2004 10:10	0.8	-3.3	90		
44	6/29/2004 10:18	2.5	-1.8	95		
45	6/29/2004 10:23	1.5	-11.8	92		
48	6/29/2004 10:25	0.8	-2.1	89		
47	6/29/2004 10:28	0.8	-7.0	110		
48	6/29/2004 10:44	0.8	-3.0	115		
49	6/29/2004 11:02	0.7	-12.0	111		
50	6/29/2004 11:07	0.7	-12.7	110		
51	6/29/2004 11:11	0.7	-8.9	115		
52	6/29/2004 11:14	0.8	-12.1	110		
53						Well Closed, No Sample.
54	6/29/2004 11:17	0.8	-4.7	102		
55	6/29/2004 11:25	0.5	-9.7	102		
56	6/29/2004 11:38	0.8	-7.3	117		
57	6/29/2004 11:46	0.4	-7.0	112		
58	6/29/2004 11:49	0.8	-8.9	115		
59	6/29/2004 11:54	0.5	-4.5	112		
60	6/29/2004 11:57	0.8	-12.1	114		
61	6/29/2004 12:00	0.4	-1.4	121		
62	6/29/2004 7:52	0.7	-12.7	102		
63	6/29/2004 10:35	0.8	-12.2	99	valve adjustment	Well Closed.
64	6/29/2004 12:00	2.3	-12.9	89		
65	6/29/2004 11:59	4.9	-12.4	84		
66	6/29/2004 11:53	0.7	-7.4	110		
67	6/29/2004 11:50	0.7	-7.7	102		
68	6/29/2004 11:44	0.8	-5.2	115		
69	6/29/2004 11:41	0.7	-10.0	120		
70	6/29/2004 11:33	0.7	-1.3	92		
71	6/29/2004 11:20	0.8	-0.9	100		
72	6/29/2004 11:23	2.5	-10.6	102		
73	6/29/2004 11:28	0.5	-7.4	101		
74						Well Closed, No Sample.
75	6/29/2004 8:40	0.8	-1.1	92		
80						Closed, No Sample.
81						Closed, No Sample.
82						Closed, No Sample.
83						Closed, No Sample.
84						Closed, No Sample.
85						Closed, No Sample.
86						Closed, No Sample.
87						Closed, No Sample.
88						Closed, No Sample.
89						Closed, No Sample.
0000V1A						No Sample.
0000V1B						No Sample.
0000V2A						No Sample.
0000V2B						No Sample.
0000FLAR	6/29/2004 12:08	1.3	1.3	100		
Comments						
Well IDs 80 through 89, V1A, V1B, V2A, V2B, FLAR are sample ports. No pressure, flow or temperature data available.						
Shaded box indicates well not in acceptable range.						
Compliance : O ₂ < 5% , Static Pressure < 0" H ₂ O, and Temperature < 131 °C						

Appendix B

Monthly Flare Outage Summary Sheets

MANATEE COUNTY		Facility ID: 0810055-003AV							
LENA ROAD LANDFILL									
FLARE OUTAGES									
JANUARY 2004									
input	31	days					0		number of periods exceeding 1-hr duration
calculation	744	hours					0.3	%	percentage of time flare off-line for month
				TOTAL		2.08		hours	total hours flare off-line
DATE	Flare Outage START	Flare Outage END	DURATION time format	hours	minutes	conversion minutes to hours	decimal hours format	DURATION	
1-Jan-04			0:00	0	0	0.00	0.00	0.00	
2-Jan-04	13:15	13:20	0:05	0	5	0.08	0.08	0.08	
3-Jan-04			0:00	0	0	0.00	0.00	0.00	
Sunday 4-Jan-04			0:00	0	0	0.00	0.00	0.00	
5-Jan-04			0:00	0	0	0.00	0.00	0.00	
6-Jan-04	13:25	13:30	0:05	0	5	0.08	0.08	0.08	
7-Jan-04			0:00	0	0	0.00	0.00	0.00	
8-Jan-04			0:00	0	0	0.00	0.00	0.00	
9-Jan-04			0:00	0	0	0.00	0.00	0.00	
10-Jan-04			0:00	0	0	0.00	0.00	0.00	
Sunday 11-Jan-04			0:00	0	0	0.00	0.00	0.00	
12-Jan-04			0:00	0	0	0.00	0.00	0.00	
13-Jan-04			0:00	0	0	0.00	0.00	0.00	
14-Jan-04			0:00	0	0	0.00	0.00	0.00	
15-Jan-04			0:00	0	0	0.00	0.00	0.00	
16-Jan-04	10:20	10:45	0:25	0	25	0.42	0.42	0.42	
17-Jan-04			0:00	0	0	0.00	0.00	0.00	
Sunday 18-Jan-04			0:00	0	0	0.00	0.00	0.00	
18-Jan-04			0:00	0	0	0.00	0.00	0.00	
20-Jan-04	12:40	13:20	0:40	0	40	0.67	0.67	0.67	
21-Jan-04			0:00	0	0	0.00	0.00	0.00	
22-Jan-04			0:00	0	0	0.00	0.00	0.00	
23-Jan-04			0:00	0	0	0.00	0.00	0.00	
24-Jan-04			0:00	0	0	0.00	0.00	0.00	
Sunday 25-Jan-04			0:00	0	0	0.00	0.00	0.00	
26-Jan-04			0:00	0	0	0.00	0.00	0.00	
27-Jan-04			0:00	0	0	0.00	0.00	0.00	
28-Jan-04	19:40	19:45	0:05	0	5	0.08	0.08	0.08	
29-Jan-04	18:40	18:50	0:10	0	10	0.17	0.17	0.17	
30-Jan-04	8:35	8:50	0:15	0	15	0.25	0.25	0.25	
	7:10	7:15	0:05	0	5	0.08	0.08	0.08	
	11:05	11:20	0:15	0	15	0.25	0.25	0.25	
31-Jan-04			0:00	0	0	0.00	0.00	0.00	
NOTES									
Shaded cells indicate flare outage time period greater than 1-hour in duration									

MANATEE COUNTY		Facility ID: 0810055-003AV							
LENA ROAD LANDFILL									
FLARE OUTAGES									
MARCH 2004									
Input	744	days						6	number of periods exceeding 1-hr duration
calculation		hours						9.5	percentage of time flare off-line for month
						TOTAL		71.03	hours
									total hours flare off-line
DATE	Flare Outage START	Flare Outage END	calculation time format DURATION	input hours	input minutes	calculation conversion minutes to hours	calculation decimal hours format DURATION		
Monday	1-Mar-04		0:00	0	0	0.00	0.00		
	2-Mar-04	12:25 12:55	0:30	0	30	0.50	0.50		
		20:15 20:20	0:05	0	5	0.08	0.08		
	3-Mar-04		0:00	0	0	0.00	0.00		
	4-Mar-04		0:00	0	0	0.00	0.00		
	5-Mar-04		0:00	0	0	0.00	0.00		
	6-Mar-04		0:00	0	0	0.00	0.00		
Sunday	7-Mar-04		0:00	0	0	0.00	0.00		
	8-Mar-04		0:00	0	0	0.00	0.00		
	9-Mar-04	12:40 12:50	0:10	0	10	0.17	0.17		
	10-Mar-04		0:00	0	0	0.00	0.00		
	11-Mar-04	15:15 15:25	0:10	0	10	0.17	0.17		
	12-Mar-04	2:45 2:50	0:05	0	5	0.08	0.08		
		3:05 3:10	0:05	0	5	0.08	0.08		
		5:10 5:20	0:10	0	10	0.17	0.17		
		6:55 7:10	0:15	0	15	0.25	0.25		
		9:35 9:40	0:05	0	5	0.08	0.08		
		9:45 10:50	1:05	1	5	0.08	1.08		
		11:55 12:00	0:05	0	5	0.08	0.08		
		12:15 12:25	0:10	0	10	0.17	0.17		
		12:50 13:10	0:20	0	20	0.33	0.33		
		13:20 13:30	0:10	0	10	0.17	0.17		
		13:50 14:00	0:10	0	10	0.17	0.17		
		14:10 14:45	0:35	0	35	0.58	0.58		
	13-Mar-04	5:40 5:45	0:05	0	5	0.08	0.08		
Sunday	14-Mar-04		0:00	0	0	0.00	0.00		
	15-Mar-04		0:00	0	0	0.00	0.00		
	16-Mar-04		0:00	0	0	0.00	0.00		
	17-Mar-04	14:30 14:50	0:20	0	20	0.33	0.33		
		20:50 20:55	0:05	0	5	0.08	0.08		
		21:40 21:50	0:10	0	10	0.17	0.17		
	18-Mar-04	4:35 4:50	0:15	0	15	0.25	0.25		
		5:20 5:30	0:10	0	10	0.17	0.17		
		22:25 23:59	1:34	1	34	0.57	1.57		
	19-Mar-04	0:00 13:10	13:10	13	10	0.17	13.17		
	20-Mar-04		0:00	0	0	0.00	0.00		
Sunday	21-Mar-04	8:40 8:45	0:05	0	5	0.08	0.08		
		10:25 10:35	0:10	0	10	0.17	0.17		
	22-Mar-04	13:45 14:00	0:15	0	15	0.25	0.25		
	23-Mar-04		0:00	0	0	0.00	0.00		
	24-Mar-04		0:00	0	0	0.00	0.00		
	25-Mar-04	14:15 14:45	0:30	0	30	0.50	0.50		
	26-Mar-04	13:35 14:00	0:25	0	25	0.42	0.42		
	27-Mar-04	7:15 23:59	16:44	16	44	0.73	16.73		
Sunday	28-Mar-04	0:00 23:59	23:59	23	59	0.98	23.98		
	29-Mar-04	0:00 7:55	7:55	7	55	0.92	7.92		
	30-Mar-04	5:40 5:45	0:05	0	5	0.08	0.08		
		10:10 10:20	0:10	0	10	0.17	0.17		
		10:55 11:20	0:25	0	25	0.42	0.42		
		12:15 12:20	0:05	0	5	0.08	0.08		
	31-Mar-04	1:15 1:30	0:15	0	15	0.25	0.25		
NOTES									
Shaded cells indicate flare outage time period greater than 1-hour in duration									

MANATEE COUNTY		Facility ID: 0610055-003AV									
LENA ROAD LANDFILL											
FLARE OUTAGES											
APRIL	2004										
Input	720	days						8		number of periods exceeding 1-hr duration	
calculation		hours						9.6	%	percentage of time flare off-line for month	
				TOTAL				68.87	hours	total hours flare off-line	
DATE	Flare Outage START	Flare Outage END	calculation time format DURATION	hours	minutes	calculation conversion minutes to hours	calculation decimal hours format DURATION				
1-Apr-04	8:40	9:00	0:20	0	20	0.33	0.33				
2-Apr-04	3:40	3:50	0:10	0	10	0.17	0.17				
	4:15	4:30	0:15	0	15	0.25	0.25				
	4:45	4:50	0:05	0	5	0.08	0.08				
	6:40	6:45	0:05	0	5	0.08	0.08				
3-Apr-04			0:00	0	0	0.00	0.00				
Sunday	4-Apr-04	2:20	2:30	0:10	0	10	0.17	0.17			
		5:40	5:45	0:05	0	5	0.08	0.08			
	5-Apr-04			0:00	0	0	0.00	0.00			
	6-Apr-04	2:40	2:50	0:10	0	10	0.17	0.17			
		21:50	22:00	0:10	0	10	0.17	0.17			
	7-Apr-04			0:00	0	0	0.00	0.00			
	8-Apr-04			0:00	0	0	0.00	0.00			
	9-Apr-04	7:45	7:50	0:05	0	5	0.08	0.08			
		9:50	10:10	0:20	0	20	0.33	0.33			
		10:40	10:45	0:05	0	5	0.08	0.08			
		12:40	12:45	0:05	0	5	0.08	0.08			
		13:00	14:10	1:10	1	10	0.17	0.17			
	10-Apr-04	11:00	11:10	0:10	0	10	0.17	0.17			
		11:25	11:35	0:10	0	10	0.17	0.17			
		11:45	12:00	0:15	0	15	0.25	0.25			
		12:25	12:30	0:05	0	5	0.08	0.08			
		13:50	14:00	0:10	0	10	0.17	0.17			
		14:50	15:10	0:20	0	20	0.33	0.33			
		17:35	17:45	0:10	0	10	0.17	0.17			
Sunday	11-Apr-04	0:20	0:30	0:10	0	10	0.17	0.17			
		4:10	23:59	19:49	19	49	0.82	0.82			
	12-Apr-04	0:00	7:00	7:00	7	0	0.00	0.00			
		19:20	23:59	4:39	4	39	0.85	0.85			
	13-Apr-04	0:00	6:00	6:00	6	0	0.00	0.00			
		12:00	12:40	0:40	0	40	0.67	0.67			
	14-Apr-04			0:00	0	0	0.00	0.00			
	15-Apr-04	2:30	2:40	0:10	0	10	0.17	0.17			
	16-Apr-04	19:15	19:30	0:15	0	15	0.25	0.25			
	17-Apr-04			0:00	0	0	0.00	0.00			
Sunday	18-Apr-04			0:00	0	0	0.00	0.00			
	19-Apr-04	8:50	14:30	5:40	5	40	0.87	0.87			
	20-Apr-04	2:15	2:25	0:10	0	10	0.17	0.17			
		14:00	14:15	0:15	0	15	0.25	0.25			
		14:25	14:30	0:05	0	5	0.08	0.08			
		14:50	15:00	0:10	0	10	0.17	0.17			
		15:15	15:25	0:10	0	10	0.17	0.17			
		21:55	22:05	0:10	0	10	0.17	0.17			
		22:45	22:50	0:05	0	5	0.08	0.08			
	21-Apr-04	20:05	20:20	0:15	0	15	0.25	0.25			
		20:40	20:50	0:10	0	10	0.17	0.17			
		22:05	22:15	0:10	0	10	0.17	0.17			
		23:00	23:59	0:59	0	59	0.98	0.98			
	22-Apr-04	0:00	6:20	6:20	6	20	0.33	0.33			
		12:10	12:20	0:10	0	10	0.17	0.17			
		12:40	12:45	0:05	0	5	0.08	0.08			
	23-Apr-04	11:15	11:35	0:20	0	20	0.33	0.33			
		14:00	14:10	0:10	0	10	0.17	0.17			
		15:25	0:00	8:35	8	35	0.58	0.58			
		19:40	19:50	0:10	0	10	0.17	0.17			
		21:45	21:55	0:10	0	10	0.17	0.17			
	24-Apr-04	10:00	10:10	0:10	0	10	0.17	0.17			
		10:20	10:50	0:30	0	30	0.50	0.50			
		14:25	14:30	0:05	0	5	0.08	0.08			
		19:10	19:15	0:05	0	5	0.08	0.08			
		19:45	20:00	0:15	0	15	0.25	0.25			
Sunday	25-Apr-04			0:00	0	0	0.00	0.00			
	26-Apr-04			0:00	0	0	0.00	0.00			
	27-Apr-04			0:00	0	0	0.00	0.00			
	28-Apr-04	4:45	4:55	0:10	0	10	0.17	0.17			
	29-Apr-04			0:00	0	0	0.00	0.00			
	30-Apr-04			0:00	0	0	0.00	0.00			
NOTES											
Shaded cells indicate flare outage time period greater than 1-hour in duration											

MANATEE COUNTY		Facility ID: 0810055-003AV							
LENA ROAD LANDFILL									
FLARE OUTAGES									
MAY 2004									
input	30	days					7		number of periods exceeding 1-hr duration
calculation	720	hours					4.5	%	percentage of time flare off-line for month
						TOTAL	32.08	hours	total hours flare off-line
DATE	Flare Outage START	Flare Outage END	calculation time format DURATION	hours	minutes	conversion minutes to hours	calculation decimal hours format DURATION		
1-May-04	14:15	14:25	0:10	0	10	0.17	0.17		
Sunday 2-May-04			0:00	0	0	0.00	0.00		
3-May-04	17:30	17:50	0:20	0	20	0.33	0.33		
4-May-04			0:00	0	0	0.00	0.00		
5-May-04			0:00	0	0	0.00	0.00		
6-May-04	3:50	4:00	0:10	0	10	0.17	0.17		
	8:50	9:00	0:10	0	10	0.17	0.17		
	9:10	10:35	1:25	1	25	0.42	0.42		
7-May-04	6:45	6:50	0:05	0	5	0.08	0.08		
	18:55	19:00	0:05	0	5	0.08	0.08		
8-May-04	12:10	18:20	6:10	6	10	0.17	0.17		
	18:40	18:45	0:05	0	5	0.08	0.08		
Sunday 9-May-04			0:00	0	0	0.00	0.00		
10-May-04			0:00	0	0	0.00	0.00		
11-May-04			0:00	0	0	0.00	0.00		
12-May-04			0:00	0	0	0.00	0.00		
13-May-04			0:00	0	0	0.00	0.00		
14-May-04			0:00	0	0	0.00	0.00		
15-May-04	18:45	18:55	0:10	0	10	0.17	0.17		
Sunday 16-May-04			0:00	0	0	0.00	0.00		
17-May-04			0:00	0	0	0.00	0.00		
18-May-04			0:00	0	0	0.00	0.00		
19-May-04	12:45	13:20	0:35	0	35	0.58	0.58		
	13:45	13:50	0:05	0	5	0.08	0.08		
20-May-04	11:15	18:40	7:25	7	25	0.42	0.42		
21-May-04	10:45	10:55	0:10	0	10	0.17	0.17		
	11:50	11:55	0:05	0	5	0.08	0.08		
	12:25	17:45	5:20	5	20	0.33	0.33		
22-May-04	10:25	10:35	0:10	0	10	0.17	0.17		
	11:20	11:30	0:10	0	10	0.17	0.17		
	12:25	12:45	0:20	0	20	0.33	0.33		
	14:25	14:30	0:05	0	5	0.08	0.08		
	16:00	17:50	1:50	1	50	0.83	0.83		
Sunday 23-May-04			0:00	0	0	0.00	0.00		
24-May-04			0:00	0	0	0.00	0.00		
25-May-04	6:15	7:40	1:25	1	25	0.42	0.42		
	10:20	10:25	0:05	0	5	0.08	0.08		
	10:45	10:50	0:05	0	5	0.08	0.08		
	11:10	11:50	0:40	0	40	0.67	0.67		
	12:55	13:05	0:10	0	10	0.17	0.17		
	13:25	18:00	4:35	4	35	0.58	0.58		
26-May-04			0:00	0	0	0.00	0.00		
27-May-04			0:00	0	0	0.00	0.00		
28-May-04			0:00	0	0	0.00	0.00		
29-May-04			0:00	0	0	0.00	0.00		
Sunday 30-May-04			0:00	0	0	0.00	0.00		
31-May-04			0:00	0	0	0.00	0.00		

NOTES Shaded cells indicate flare outage time period greater than 1-hour in duration

