



lena - gw file

RECEIVED
NOV 06 1998
Department of Environmental Protection
BY SOUTHWEST DISTRICT

**MANATEE COUNTY
GOVERNMENT
Public Works Department**

November 4, 1998

Allison Amram, P.G.
Division of Waste Management
Department of Environmental Protection, South West District
3804 Coconut Palm Drive
Tampa, FL 33619

Re: Manatee County, Semi-annual Ground Water Quality Monitoring
Report, January - June 1998

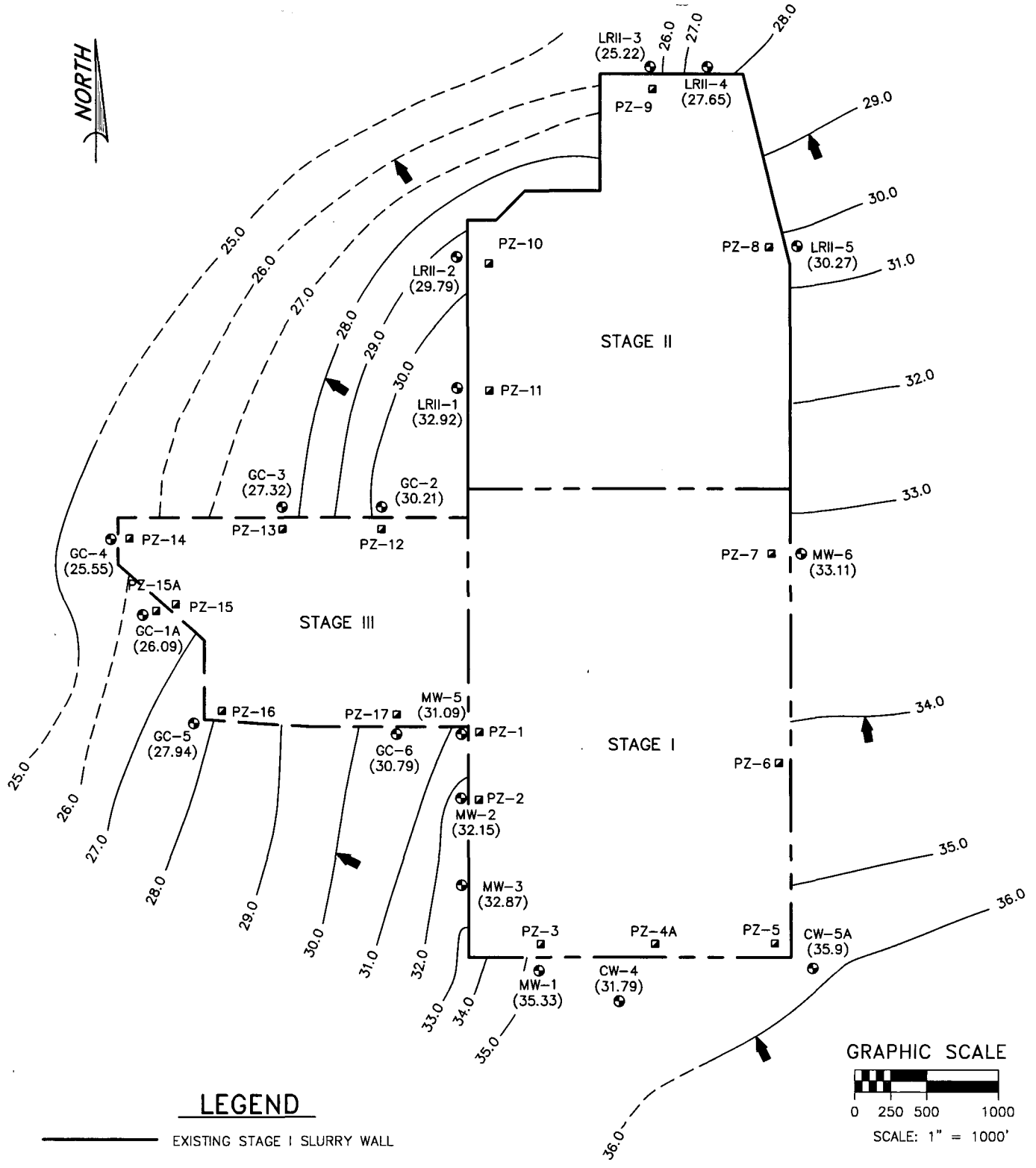
Dear Ms. Amram:

As discussed in my September 14, 1998 submittal for the above referenced subject, please find the ground water contour maps for the Lena Road and Erie Road landfill sites. This should complete the requirements for the monitoring report for the first half of 1998. If you need additional information please call me at 941-748-5543.

Sincerely,

Ben Alex, E.I.
Solid Waste Technical Coordinator

cc: Len Bramble, P.E., Public Works Director
Dan Gray, Utilities Operations Manager
Gus DiFonzo, Solid Waste Manager
Bob Butera, P.E., FDEP
Kim Ford, P.E., FDEP



LEGEND

- EXISTING STAGE I SLURRY WALL
- EXISTING STAGE II SLURRY WALL
- EXISTING STAGE III SLURRY WALL
- APPROXIMATE SURFICIAL AQUIFER MONITOR WELL LOCATION
- APPROXIMATE SURFICIAL AQUIFER PIEZOMETER LOCATION
- 20.0 GROUNDWATER ELEVATION CONTOUR LINE
DASHED WHERE INFERRED
CONTOUR INTERVAL: 1.00 FT.
- DIRECTION OF WATER FLOW

NOTE: DATA FROM CW-4 OMITTED FROM CONTOUR MAP

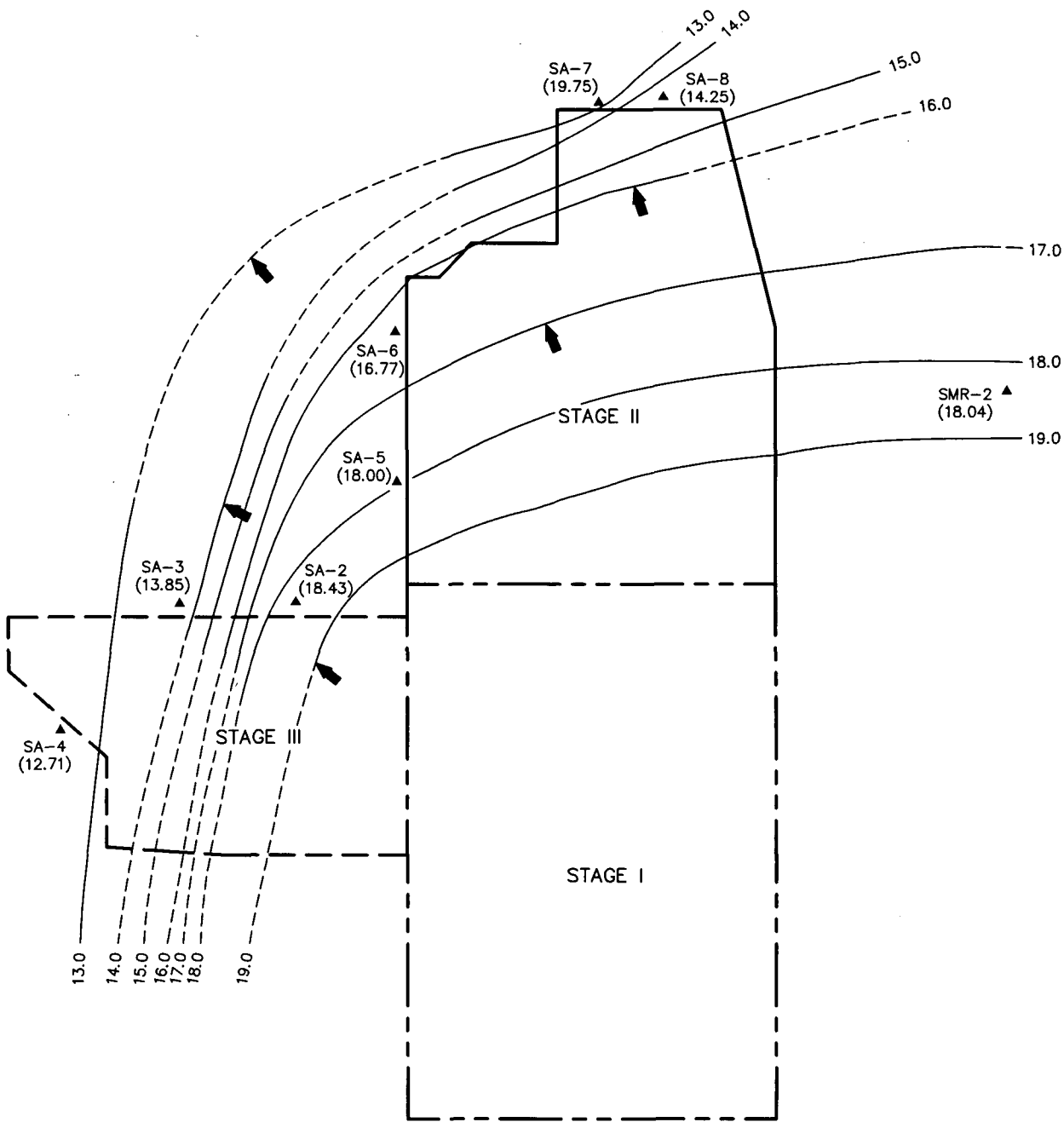
JUNE 12, 1998

SHALLOW AQUIFER GROUNDWATER ELEVATION CONTOUR MAP
 LENA ROAD LANDFILL
 3333 LENA ROAD
 MANATEE COUNTY, FLORIDA

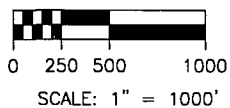


DRAWN BY: NMR	SCALE: 1" = 1,000	PROJ. NO.: 552-4L015
CHKD. BY: DAS	DATE: 10/15/98	DWG.:

55201503.DWG



GRAPHIC SCALE



LEGEND

- EXISTING STAGE I SLURRY WALL
- EXISTING STAGE II SLURRY WALL
- - - EXISTING STAGE III SLURRY WALL
- ▲ APPROXIMATE DEEP AQUIFER WELL LOCATION
- 20.0 — GROUNDWATER ELEVATION CONTOUR LINE
DASHED WHERE INFERRED
CONTOUR INTERVAL: 1.00 FT.
- ← DIRECTION OF WATER FLOW

NOTE: DATA FROM SA-7 OMITTED FROM CONTOUR MAP

JUNE 12, 1998

DEEP AQUIFER GROUNDWATER ELEVATION CONTOUR MAP
 LENA ROAD LANDFILL
 3333 LENA ROAD
 MANATEE COUNTY, FLORIDA



DRAWN BY: NMR	SCALE: 1" = 1,000	PROJ. NO.: 552-4L015
CHKD. BY: DAS	DATE: 10/15/98	DWG.:

55201506.DWG