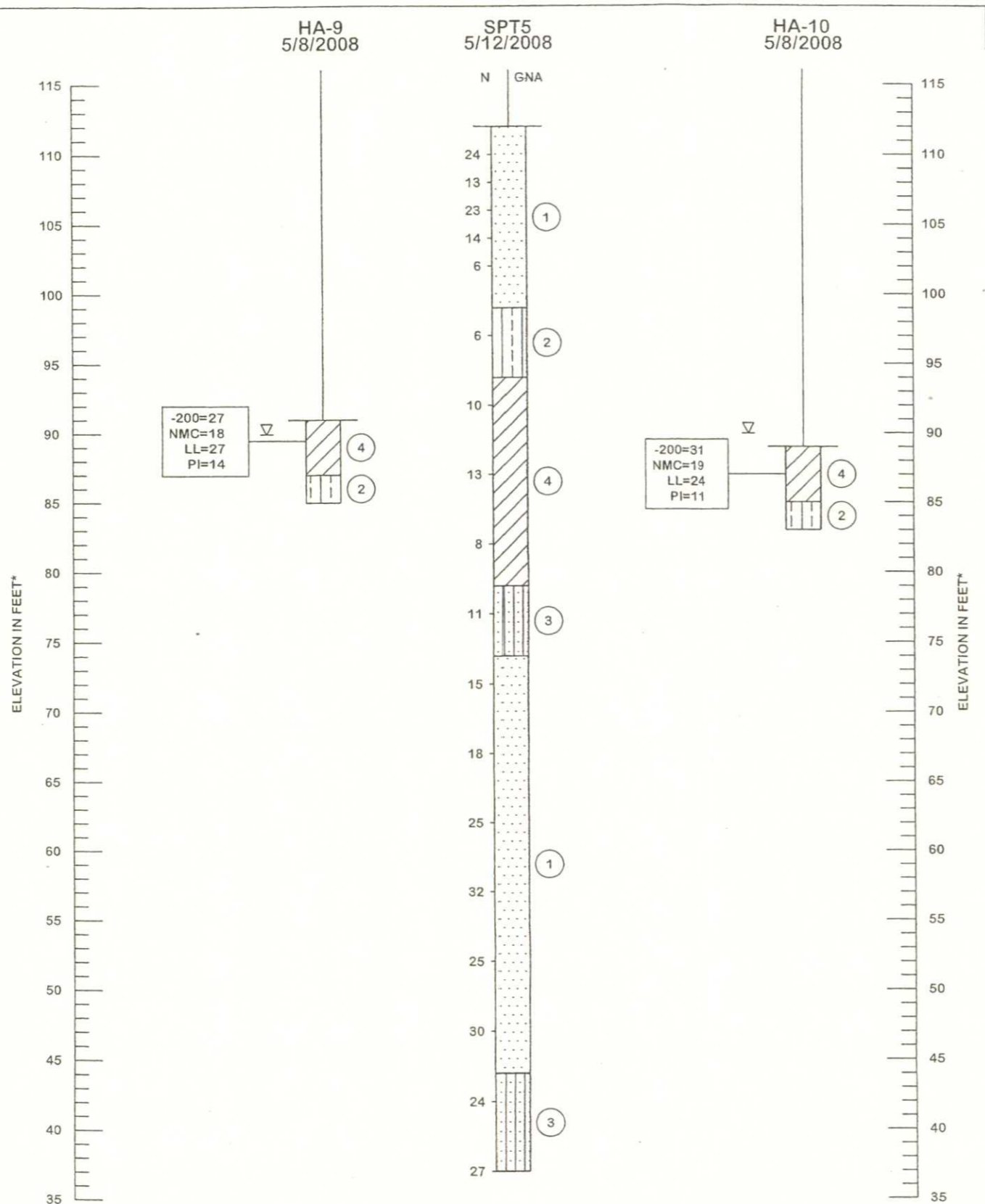


# SOIL PROFILES

## DRA-5



# LEGEND

- 1 [Pattern] GRAY TO ORANGE FINE SAND TO FINE SAND WITH SILT (SP/SP-SM)
- 2 [Pattern] ORANGE SILTY SAND TO CLAYEY SAND (SM/SC)
- 3 [Pattern] ORANGE FINE SAND WITH SILT TO SILTY SAND (SP-SM/SM)
- 4 [Pattern] GRAY TO BROWN CLAYEY SAND TO SANDY CLAY (SC/CL)

- N SPT N-VALUE IN BLOWS/FOOT FOR 12 INCHES OF PENETRATION (UNLESS OTHERWISE NOTED)
- SP UNIFIED SOIL CLASSIFICATION SYSTEM (ASTM D 2488) GROUP SYMBOL AS DETERMINED BY VISUAL REVIEW
- GNA GROUNDWATER NOT APPARENT DUE TO DRILLING METHOD USED
- ▽ GROUNDWATER TABLE ESTIMATED TO BE APERCHED CONDITION DUE TO STORMWATER INFILTRATION INTO THE POND.
- \* BORING ELEVATIONS ESTIMATED BASED ON DESIGN CONTOUR FILES PROVIDED BY SCS ENGINEERS AND THEREFORE SHOULD BE CONSIDERED APPROXIMATE.

GRANULAR MATERIALS- RELATIVE DENSITY	SPT (BLOWS/FT.)
VERY LOOSE	LESS THAN 4
LOOSE	4 TO 10
MEDIUM	10 TO 30
DENSE	30 TO 50
VERY DENSE	GREATER THAN 50
SILTS AND CLAYS CONSISTENCY	SPT (BLOWS/FT.)
VERY SOFT	LESS THAN 2
SOFT	2 TO 4
FIRM	4 TO 8
STIFF	8 TO 15
VERY STIFF	16 TO 30
HARD	GREATER THAN 30

DRAWN BY:  
SW

CHECKED BY:  
SCO

APPROVED BY:  
LPM

DATE:  
APRIL 2008

ENGINEER OF RECORD:  
LARRY P. MOORE, P.E.

FLORIDA LICENSE NO.:  
47673

**TIERRA**  
7805 Professional Place  
Tampa, Florida 33637  
Phone: 813-989-1354 Fax: 813-989-1355  
FL Cert. No.: 6486

SCALE:  
NOTED

PROJECT NUMBER:  
6511-08-086

GEOTECHNICAL ENGINEERING SERVICES  
CITRUS COUNTY CENTRAL LANDFILL  
CITRUS COUNTY, FLORIDA

SHEET 2