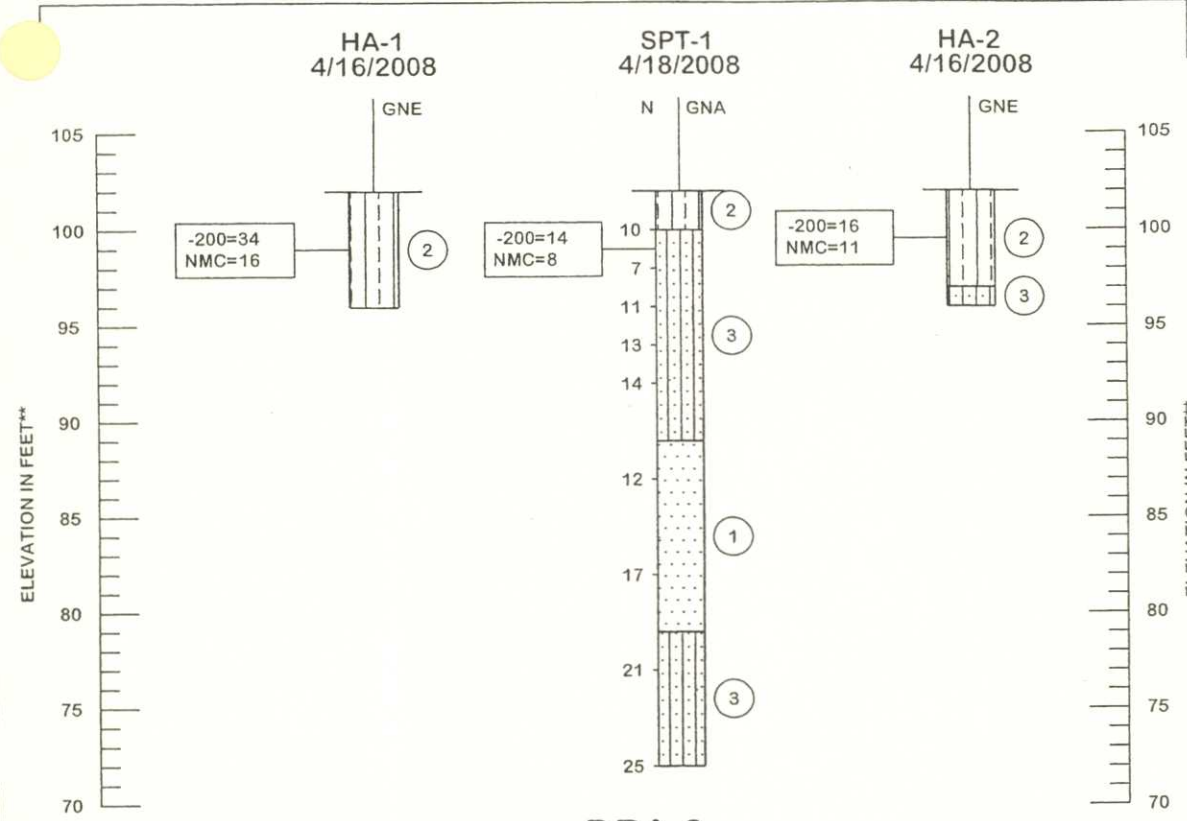


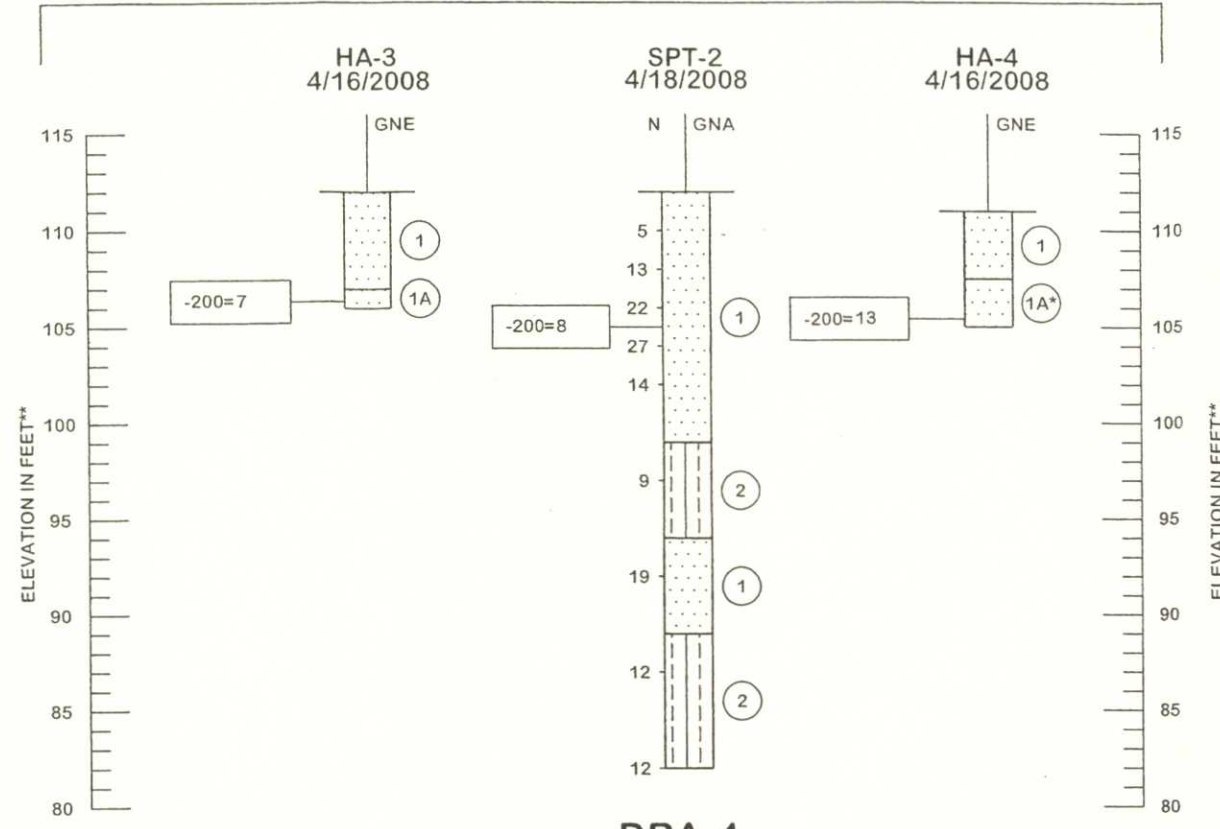
SOIL PROFILES

LEGEND

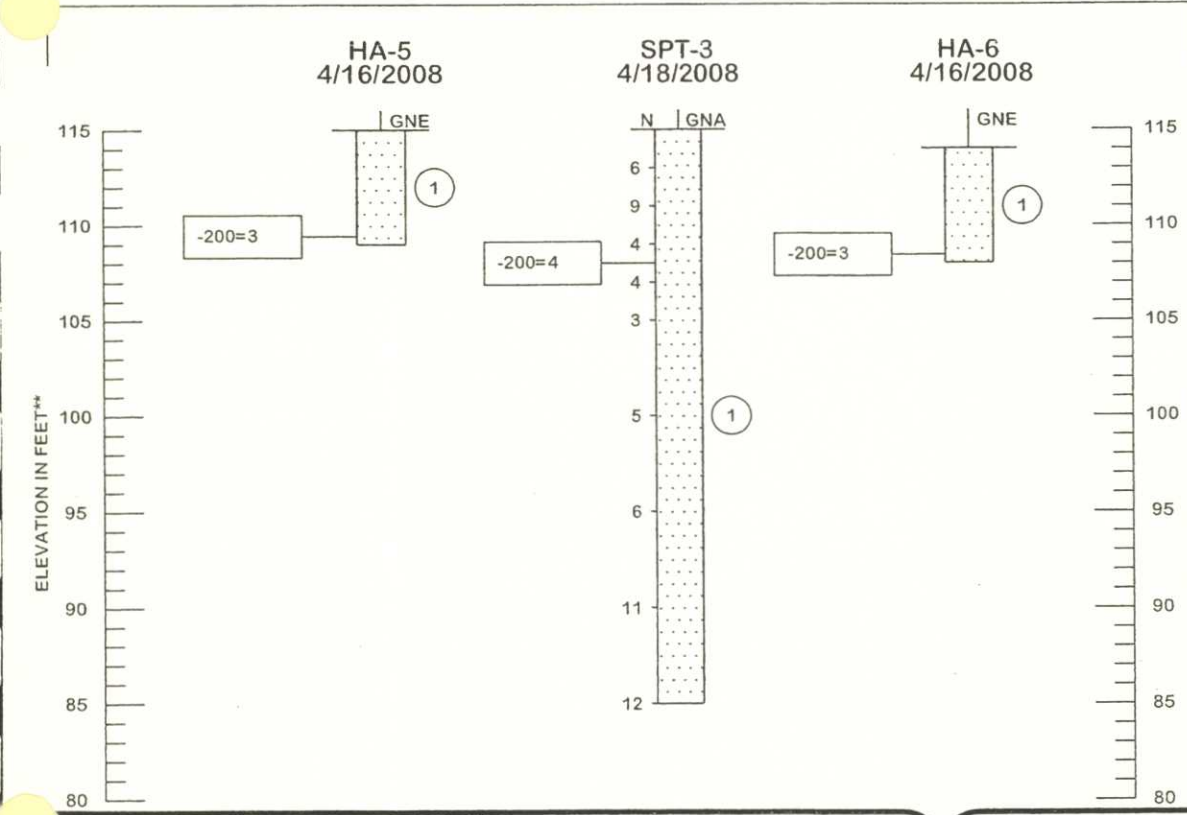
DRA-1



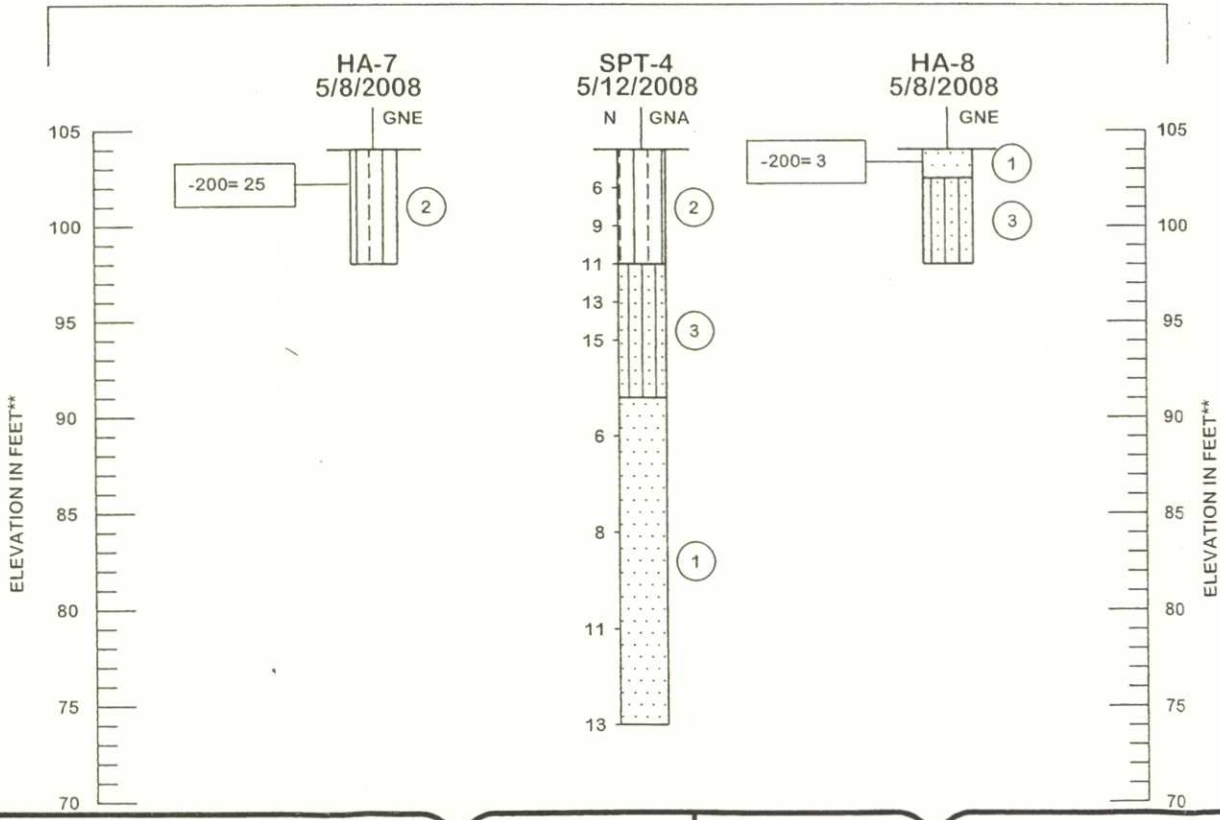
DRA-2



DRA-3



DRA-4



- ① GRAY TO ORANGE FINE SAND TO FINE SAND WITH SILT (SP/SP-SM)
 - ② ORANGE SILTY SAND TO CLAYEY SAND (SM/SC)
 - ③ ORANGE FINE SAND WITH SILT TO SILTY SAND (SP-SM/SM)
- A - WITH CLAYEY SAND LENSES
- * - AT LOCATION HA-4 SAMPLE CONSISTED OF FINE SAND WITH SILT (SP-SM). HOWEVER CLAY LENSES PRODUCED A USCS CLASSIFICATION OF SILTY SAND (SM).
- N SPT N-VALUE IN BLOWS/FOOT FOR 12 INCHES OF PENETRATION (UNLESS OTHERWISE NOTED)
- SP UNIFIED SOIL CLASSIFICATION SYSTEM (ASTM D 2488) GROUP SYMBOL AS DETERMINED BY VISUAL REVIEW
- GNE GROUNDWATER TABLE NOT ENCOUNTERED
- GNA GROUNDWATER NOT APPARENT DUE TO DRILLING METHOD USED
- ▽ GROUNDWATER TABLE
- ** BORING ELEVATIONS ESTIMATED BASED ON DESIGN CONTOUR FILES PROVIDED BY SCS ENGINEERS AND THEREFORE SHOULD BE CONSIDERED APPROXIMATE.

GRANULAR MATERIALS- RELATIVE DENSITY	SPT (BLOWS/FT.)
VERY LOOSE	LESS THAN 4
LOOSE	4 TO 10
MEDIUM	10 TO 30
DENSE	30 TO 50
VERY DENSE	GREATER THAN 50
SILTS AND CLAYS CONSISTENCY	SPT (BLOWS/FT.)
VERY SOFT	LESS THAN 2
SOFT	2 TO 4
FIRM	4 TO 8
STIFF	8 TO 15
VERY STIFF	16 TO 30
HARD	GREATER THAN 30

DESIGNED BY: SW
 APPROVED BY: LPM
 ENGINEER OF RECORD: LARRY P. MOORE, P.E.
 FLORIDA LICENSE NO.: 47673
 CHECKED BY: SCO
 DATE: APRIL 2008



SCALE: NOTED
 PROJECT NUMBER: 6511-08-086

GEOTECHNICAL ENGINEERING SERVICES
 CITRUS COUNTY CENTRAL LANDFILL
 CITRUS COUNTY, FLORIDA

SHEET 2