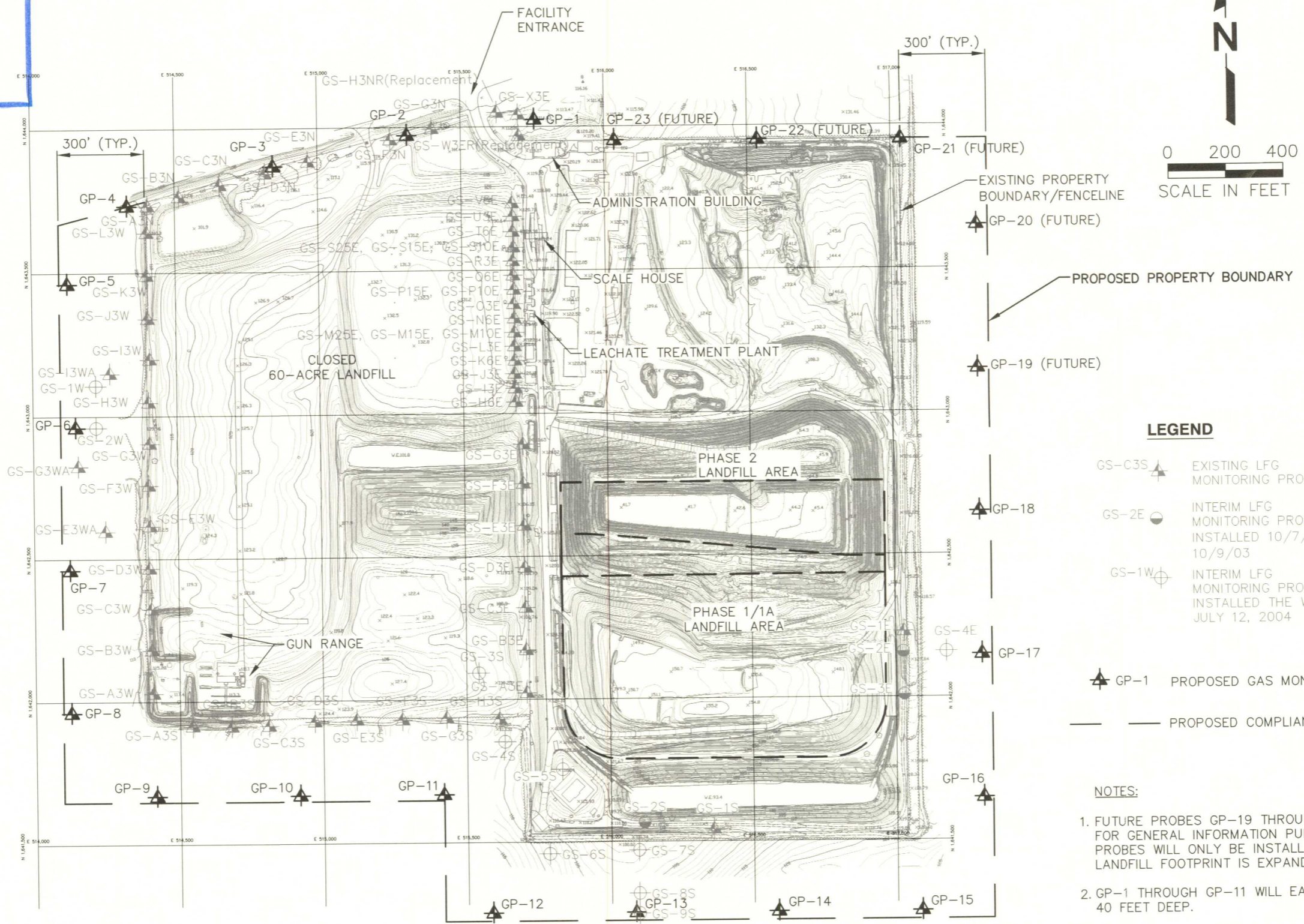


FLORIDA DEPARTMENT OF ENVIRONMENTAL PROTECTION

JUL 21 2005

SOUTHWEST DISTRICT
AMPA



LEGEND

- GS-C3S ▲ EXISTING LFG MONITORING PROBE
- GS-2E ● INTERIM LFG MONITORING PROBE INSTALLED 10/7/03 TO 10/9/03
- GS-1W ⊕ INTERIM LFG MONITORING PROBE INSTALLED THE WEEK OF JULY 12, 2004

- ▲ GP-1 PROPOSED GAS MONITORING PROBE
- PROPOSED COMPLIANCE BOUNDARY

NOTES:

1. FUTURE PROBES GP-19 THROUGH GP-23 ARE SHOWN FOR GENERAL INFORMATION PURPOSES ONLY. THESE PROBES WILL ONLY BE INSTALLED IF AND WHEN THE LANDFILL FOOTPRINT IS EXPANDED NORTHWARD.
2. GP-1 THROUGH GP-11 WILL EACH BE APPROXIMATELY 40 FEET DEEP.
3. GP-12 THROUGH GP-18 WILL BE INSTALLED TO A DEPTH OF APPROXIMATELY 80 FEET.

SCS ENGINEERS

G:\PROJECT\09199056.13\993314site071905.dwg Jul 21, 2005 - 10:47am Layout Name: Figure 9-1 By: 2569gav

Attachment 9-1. Existing and Proposed Landfill Gas Monitoring Probe Locations, Central Landfill, Citrus County, Florida.