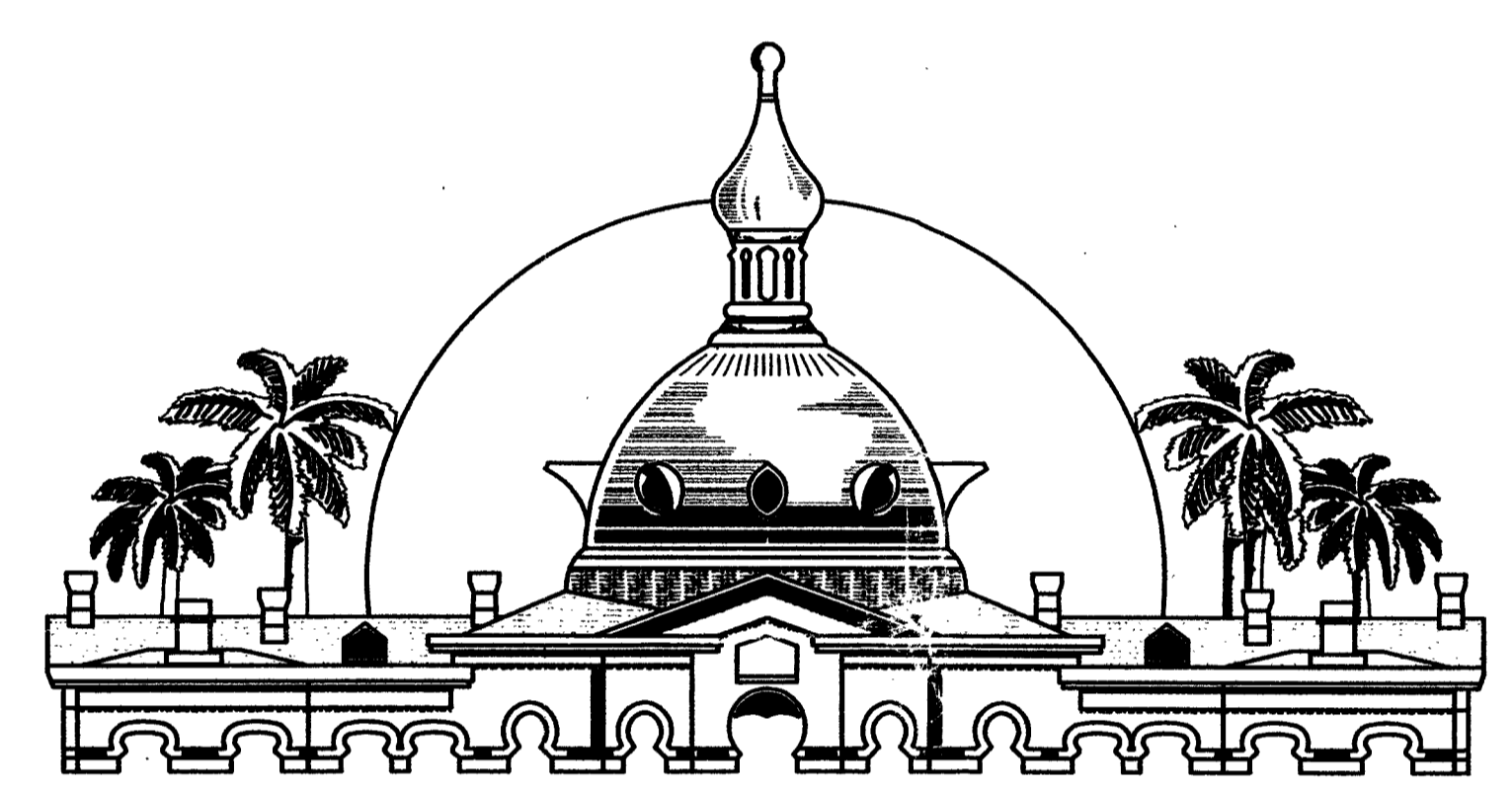


# SOUTHEAST COUNTY LANDFILL EFFLUENT/LEACHATE STORAGE POND C.I.P. NO. 53207

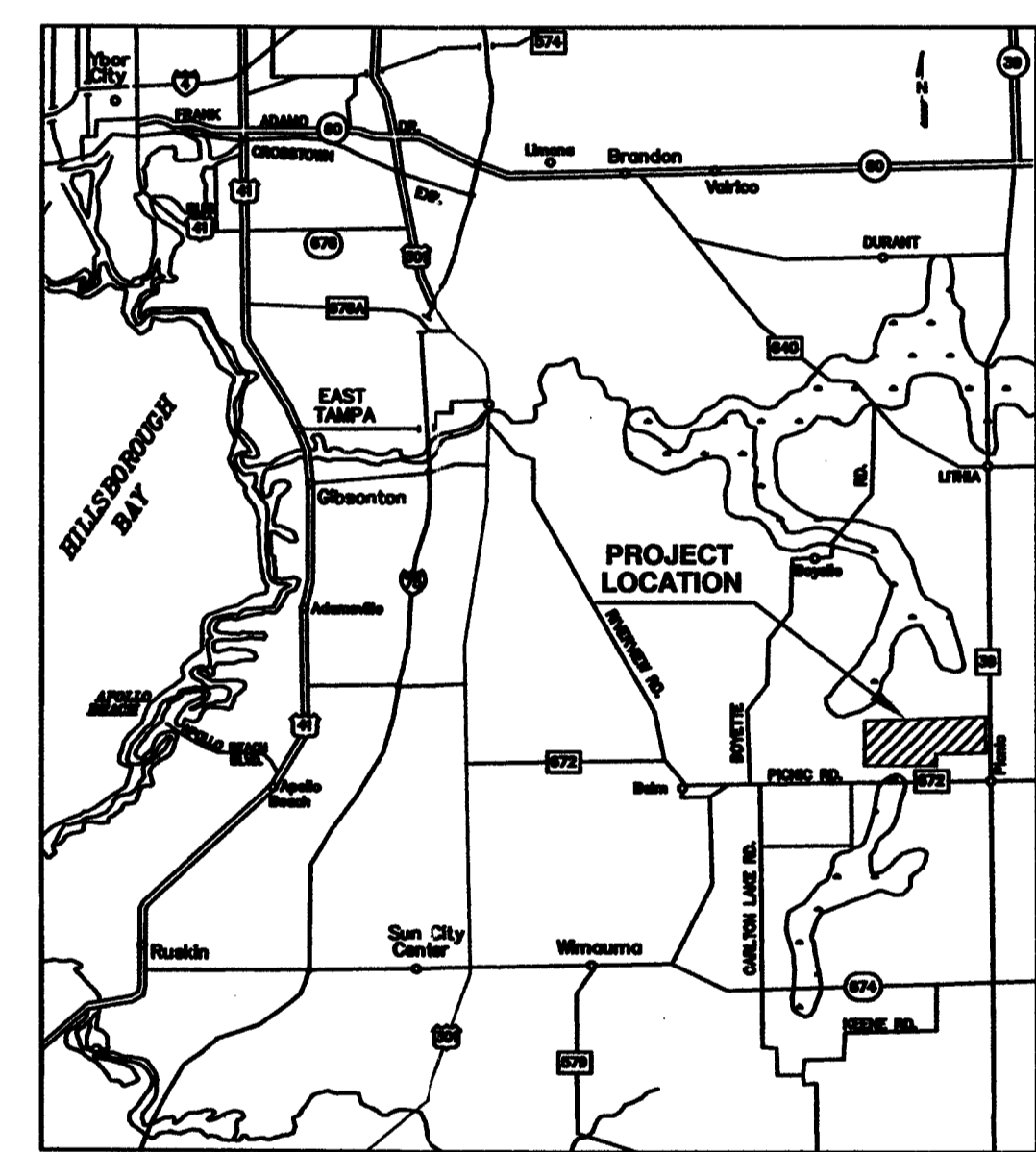
## COUNTY OF HILLSBOROUGH, FLORIDA SOLID WASTE MANAGEMENT DEPARTMENT



HILLSBOROUGH COUNTY, FLORIDA

**BOARD OF COUNTY COMMISSIONERS**

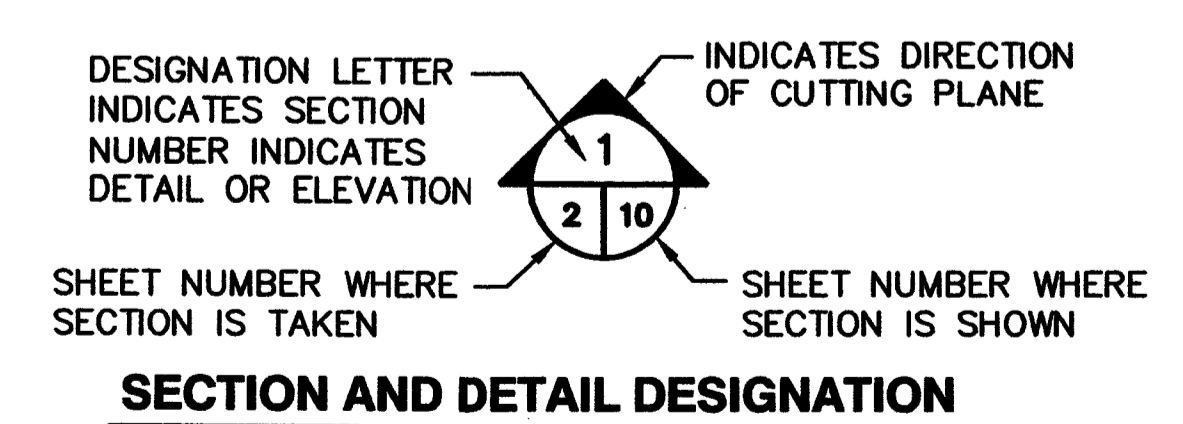
<b>PAT FRANK,</b>	Chairman
<b>JIM NORMAN,</b>	Vice Chair
<b>CHRIS HART,</b>	Commissioner
<b>THOMAS SCOTT,</b>	Commissioner
<b>RONDA STORMS,</b>	Commissioner
<b>JAN PLATT,</b>	Commissioner
<b>STACEY EASTERLING,</b>	Commissioner



VICINITY MAP

**DRAWING INDEX**

DRAWING NO.	DRAWING TITLE
1	COVER SHEET
2	EXISTING CONDITIONS AND FINAL SITE PLAN
3	SECTIONS AND DETAILS
4	DETAILS - 2
5	DETAILS - 3



FLORIDA DEPARTMENT OF  
ENVIRONMENTAL PROTECTION  
APR 16 2001  
SOUTHWEST DISTRICT  
TAMPA

PREPARED BY:  
HILLSBOROUGH COUNTY  
SOLID WASTE MANAGEMENT DEPARTMENT  
MATT MATTHEWS ALLEN G. MUNGER  
PROJECT MANAGER PLANS PREPARER

ENGINEER OF RECORD:  
ROBERT B. GARDNER, P.E.  
SCS ENGINEERS  
TAMPA, FLORIDA

FEBRUARY 2001





REV.	DATE	DESCRIPTION
1	2-20-01	Revised per FDEP
2		
3		
4		
5		

DRAWING TITLE  
**EXISTING CONDITIONS AND FINAL SITE PLAN**

PROJECT TITLE  
**SOUTHEAST COUNTY LANDFILL EFFLUENT/LEACHATE STORAGE POND**

CLIENT  
**HILLSBOROUGH COUNTY SOLID WASTE MANAGEMENT DEPARTMENT**

**SCS ENGINEERS**  
STEARNS, CONRAD AND SCHMIDT  
CONSULTING ENGINEERS  
30115.000 NORTH SUITE 200, TAMPA, FL 33619  
PH (813) 834-0880 FAX (813) 832-8757

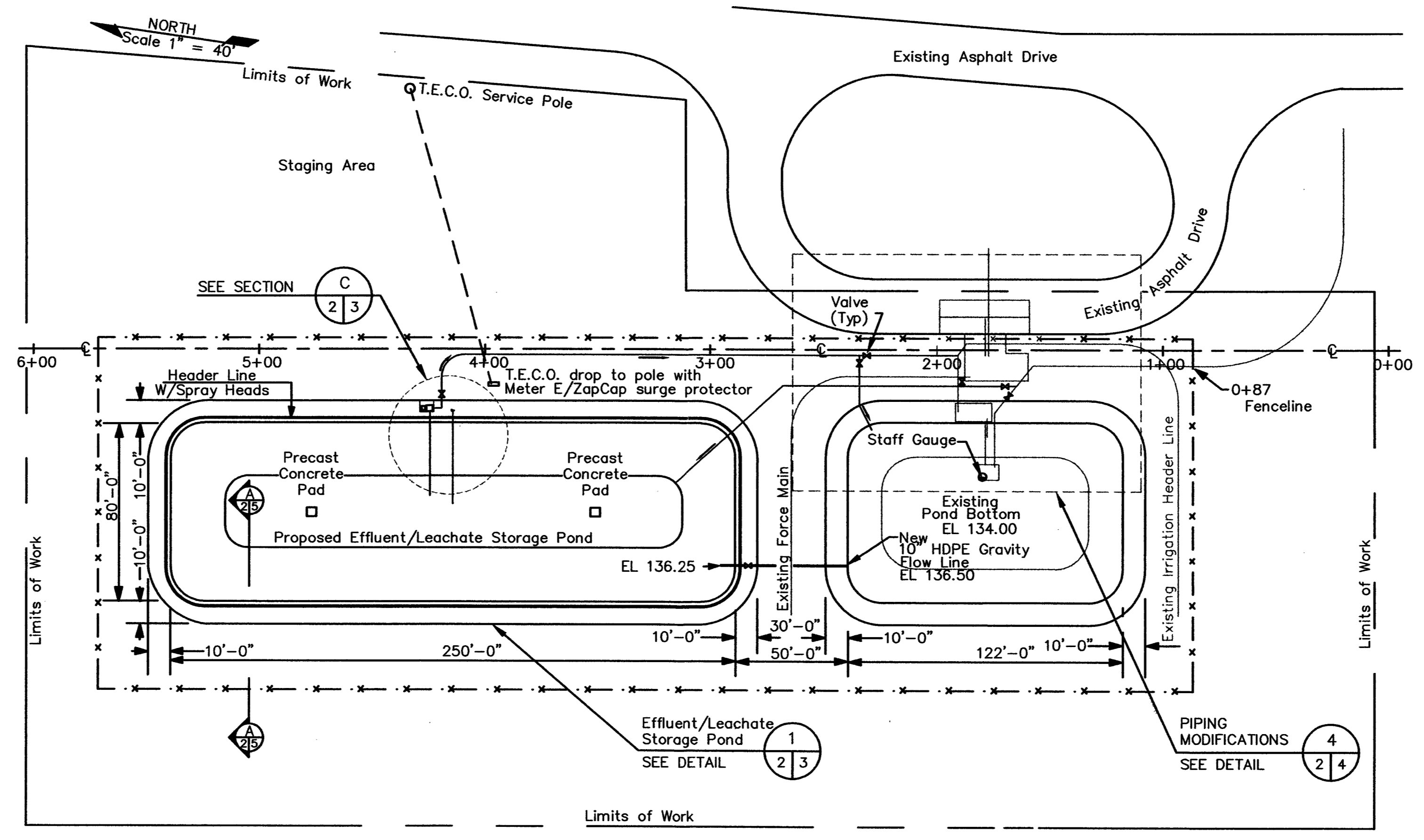
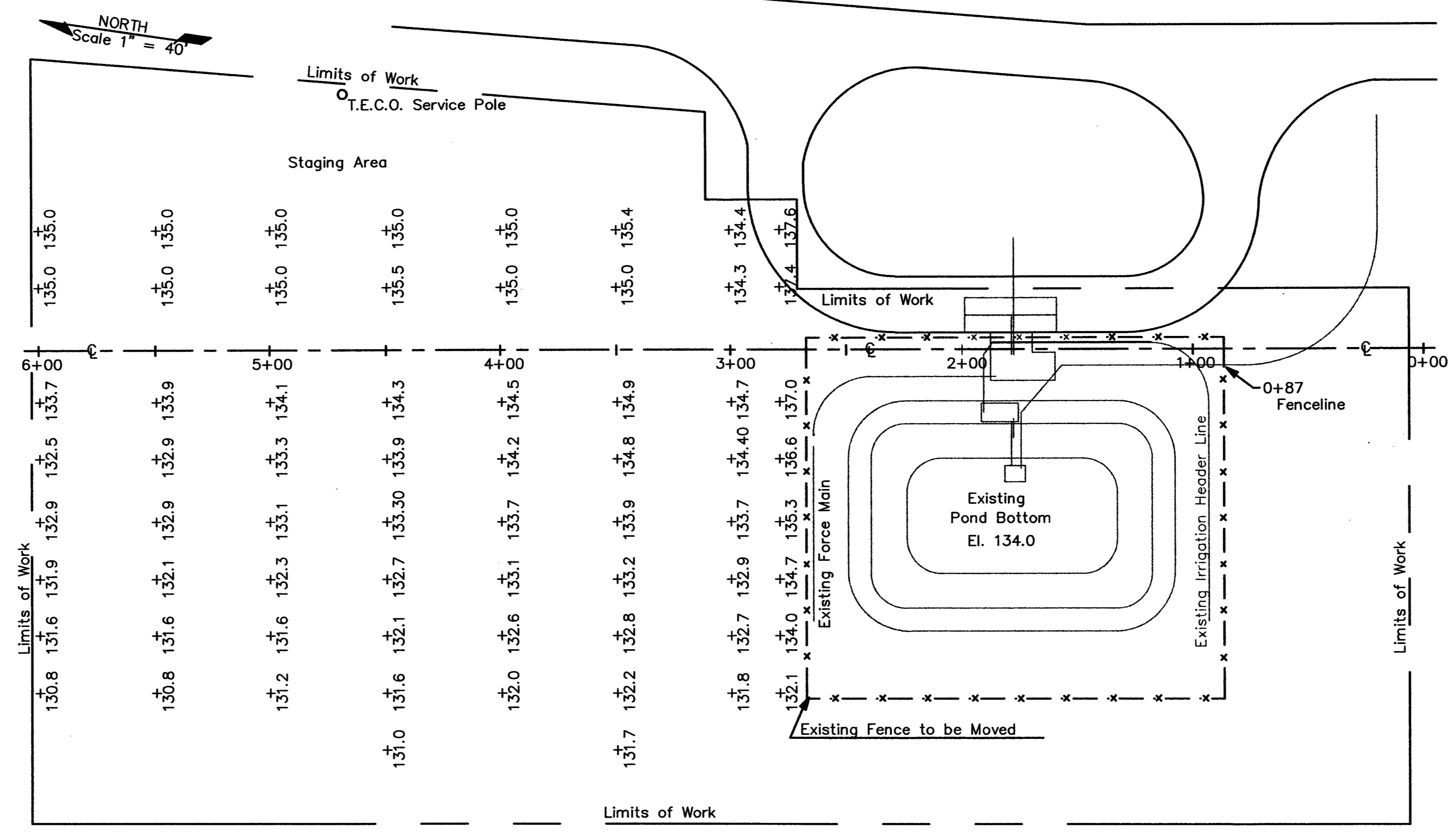
PROJ. NO. 02P00020.21  
DATE: 02/16/01  
CHK: LFR/GRD  
APP: P/REG

CADD FILE:  
**DEP24X36**

DATE:  
**FEBRUARY, 2001**

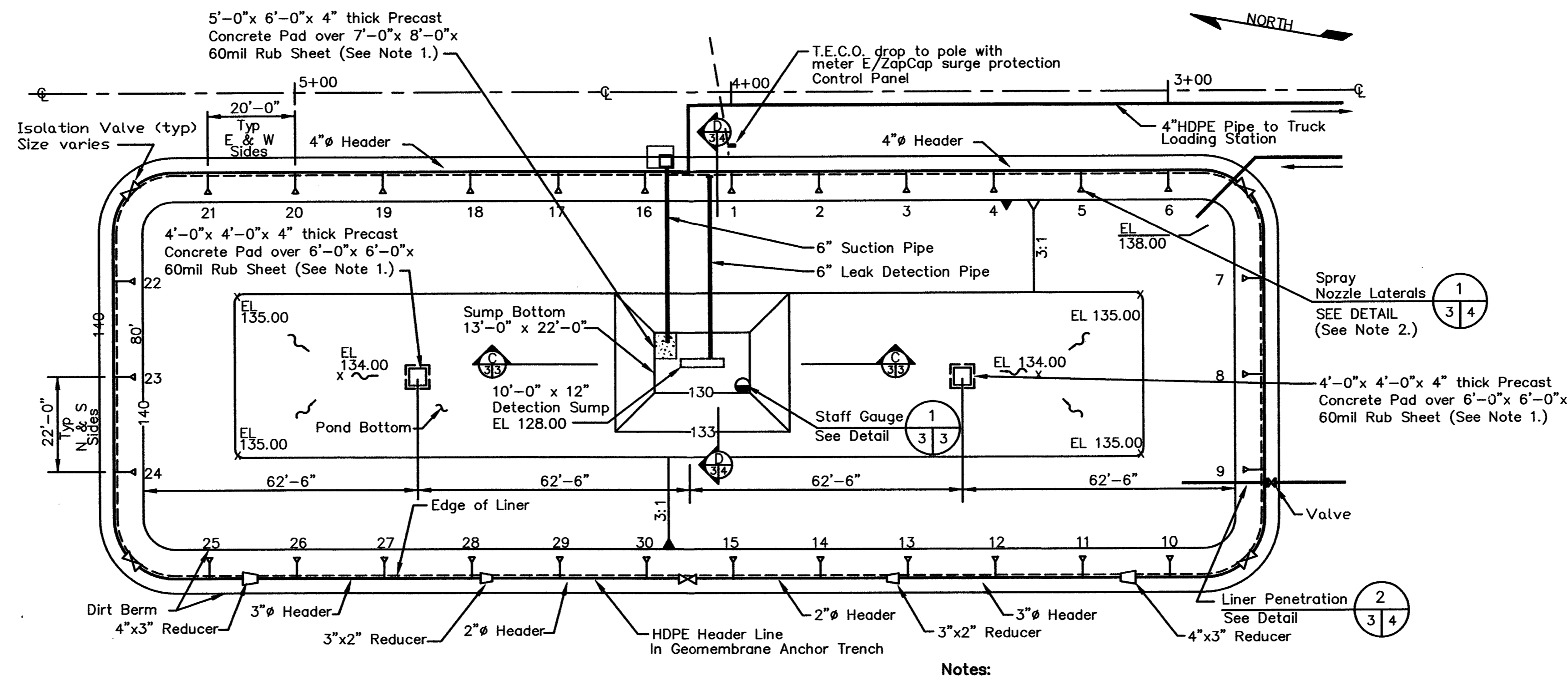
SCALE:  
**AS SHOWN**

DRAWING NO.

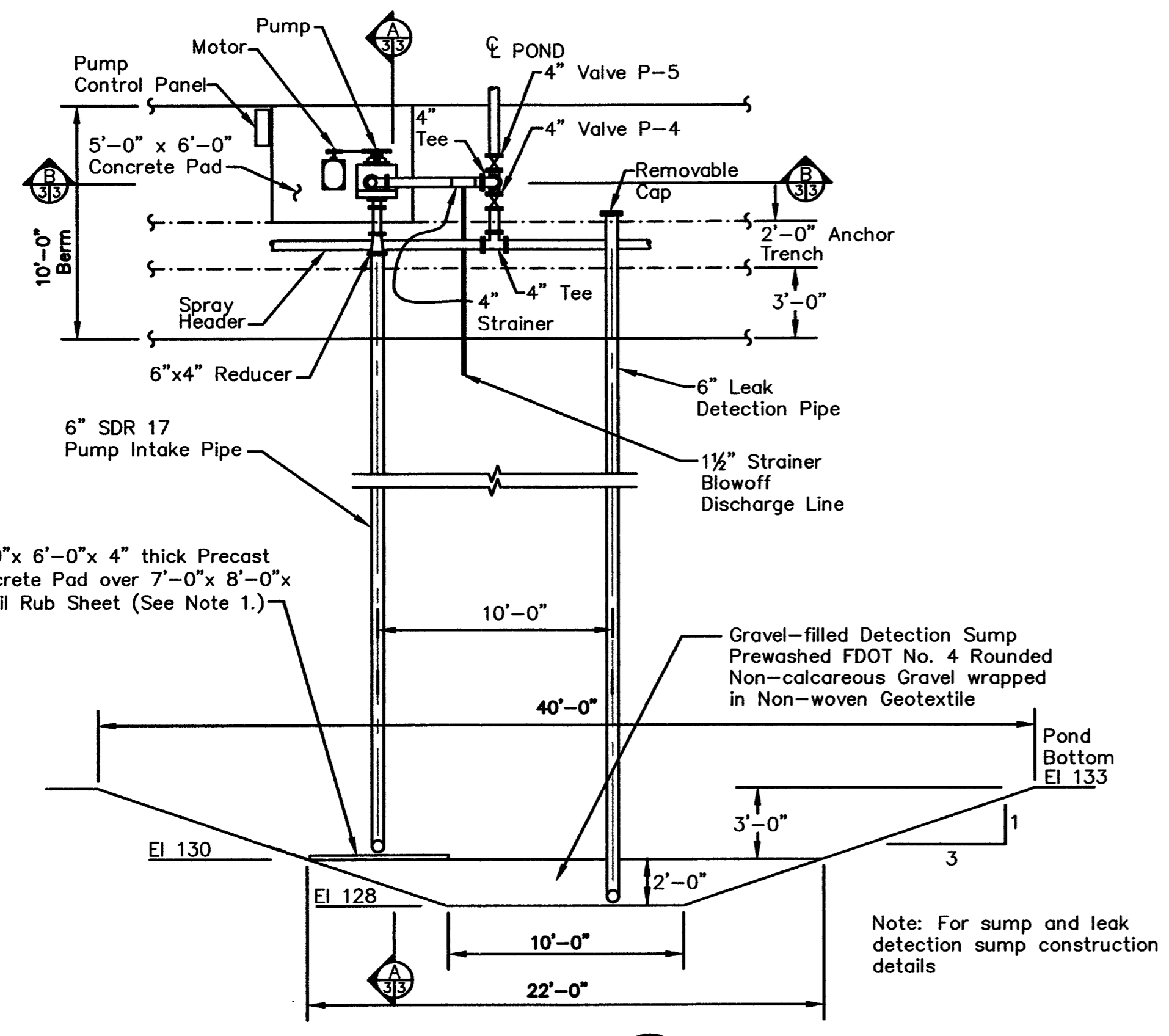


FLORIDA DEPARTMENT OF ENVIRONMENTAL PROTECTION  
APR 16 2001  
SOUTHWEST DISTRICT  
TAMPA

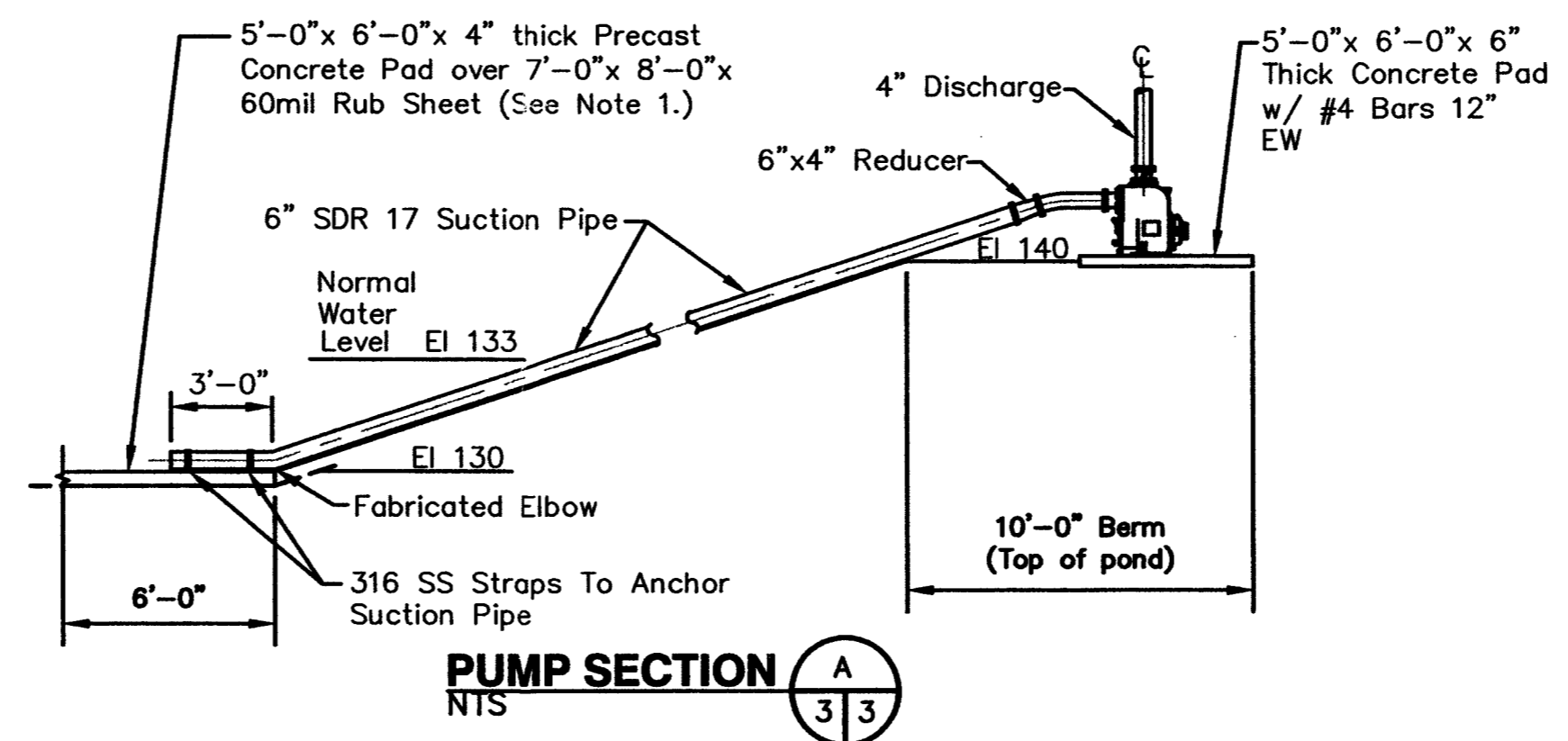
C:\p00021\hillsboroc\02p00020.21\dep24x36.dwg, Apr 16, 2001, 10:22am, hschmidt, hschmidt, J. B. P., 12000



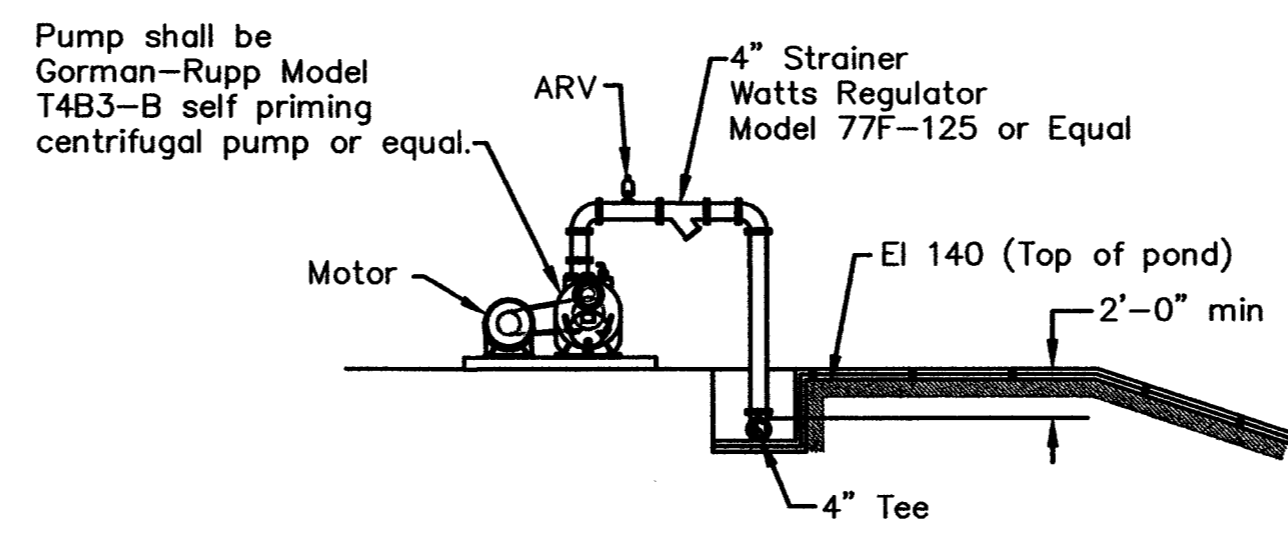
**EFFLUENT/LEACHATE STORAGE POND DETAIL**  
SCALE 1" = 20'



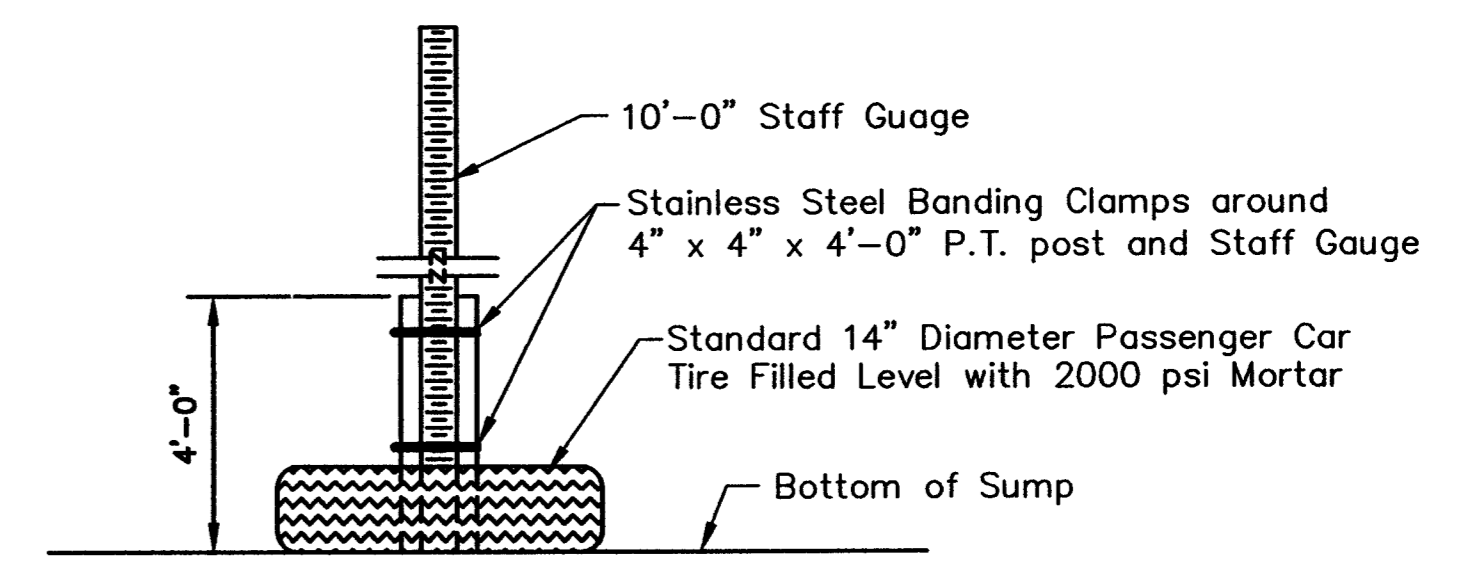
**SUMP SECTION C**  
SCALE 1" = 5'



**PUMP SECTION A**  
NTS



**PUMP SECTION B**  
NTS



Note: Install 4" x 4" x 4'-0" P.T. Post into Center of Tire Perpendicular to the Sump Bottom.

**STAFF GAUGE DETAIL**  
NTS

REV.	DATE	DESCRIPTION
1	2-20-01	Revised per FDEP

**SECTION AND DETAILS**

**PROJECT TITLE**  
SOUTHEAST COUNTY LANDFILL  
EFFLUENT/LEACHATE STORAGE POND

**CLIENT**  
HILLSBOROUGH COUNTY  
SOLID WASTE  
MANAGEMENT DEPARTMENT

**SCS ENGINEERS**  
STEARNS, CONRAD AND SCHMIDT  
CONSULTING ENGINEERS  
3012 U.S. HWY. 301 NORTH SUITE 200, TAMPA, FL 33619  
PH (813) 817-0080 FAX (813) 824-8787

PROJ. NO. 0002021  
DATE: 02/01  
DWG. BY: AM  
CHK. BY: LER/GRD  
APP. BY: RBG

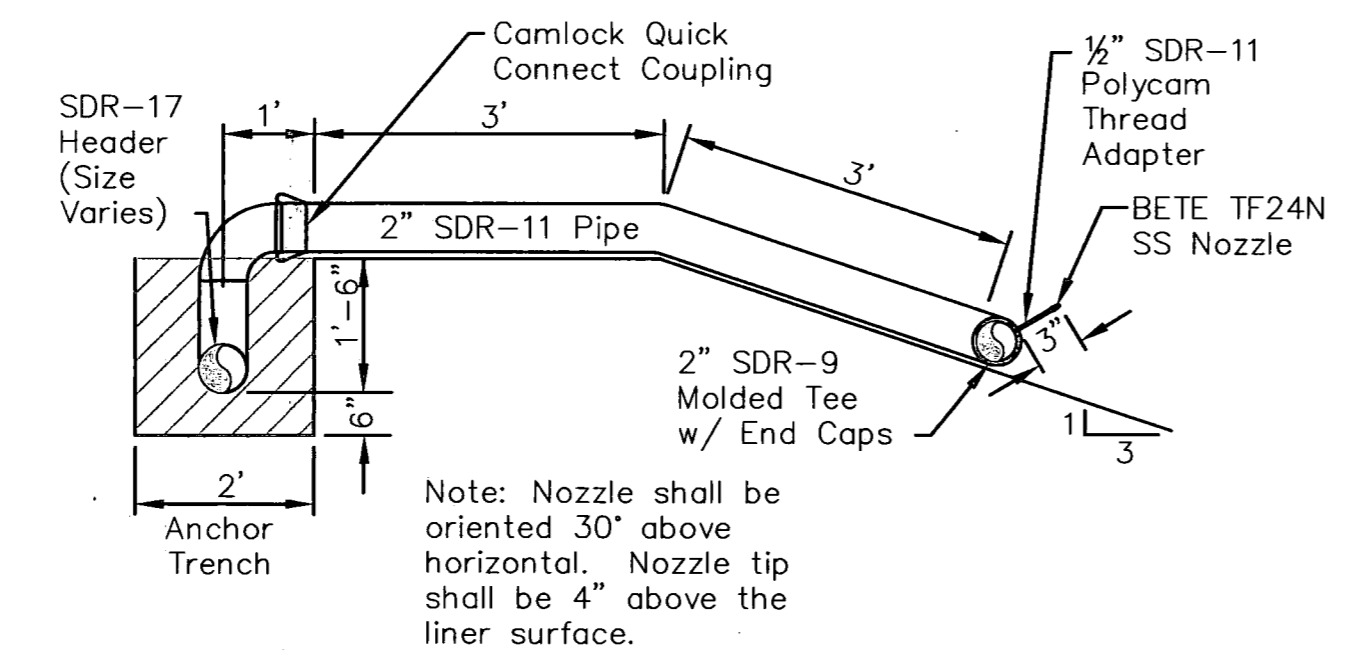
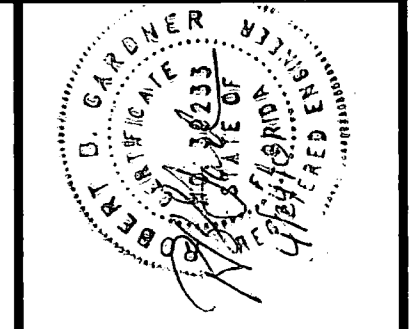
**CADD FILE:**  
DEP24X36

**DATE:**  
FEBRUARY, 2001

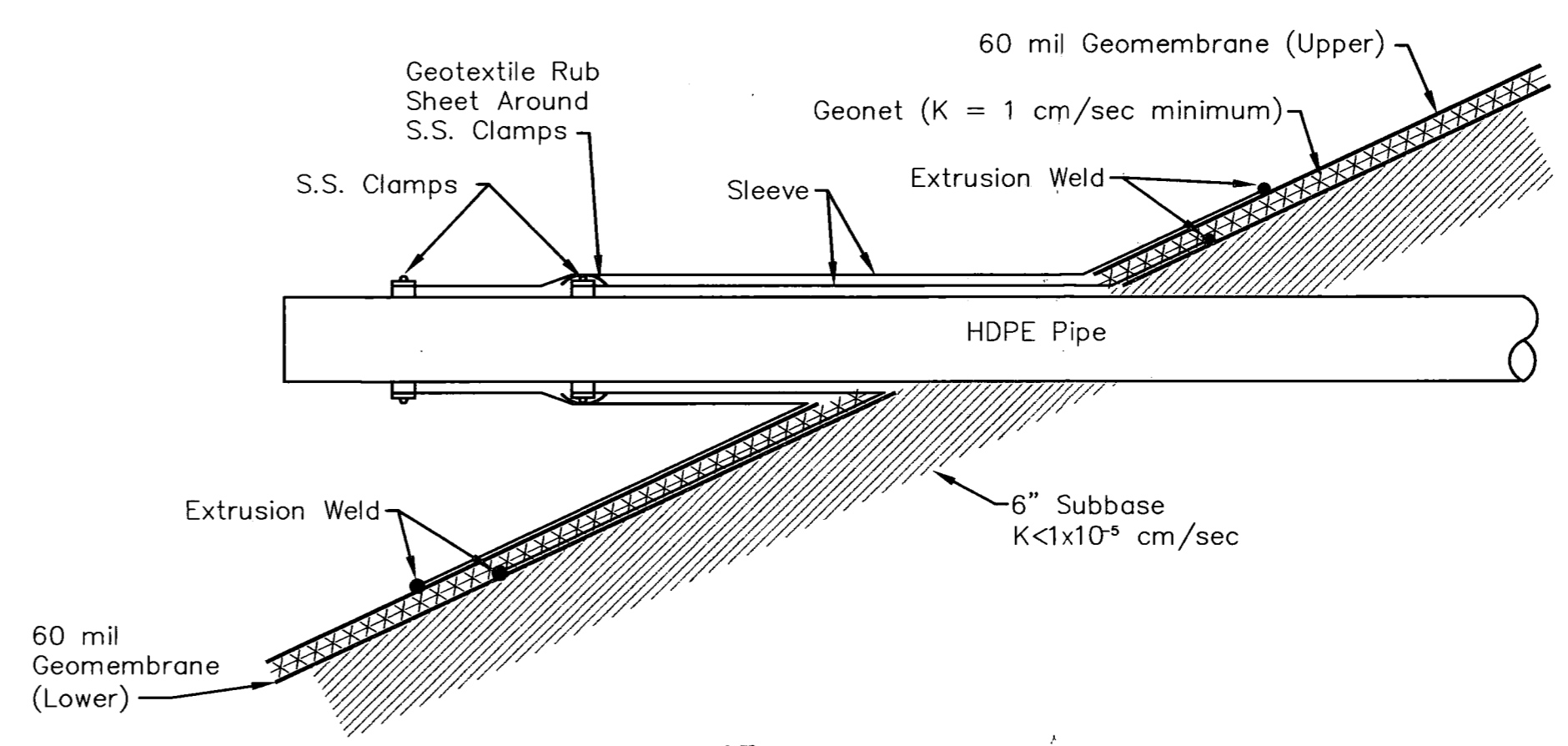
**SCALE:**  
AS SHOWN

**DRAWING NO.:**

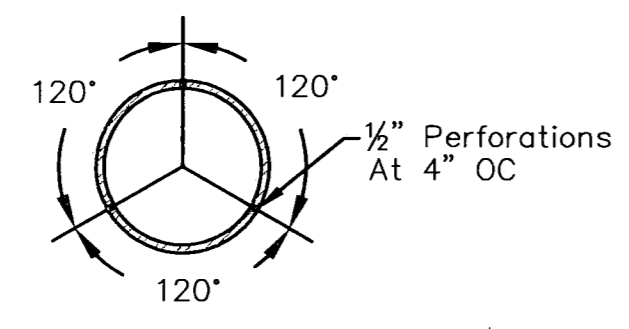
FLORIDA DEPARTMENT OF ENVIRONMENTAL PROTECTION  
APR 16 2001  
SOUTHWEST DISTRICT  
TAMPA



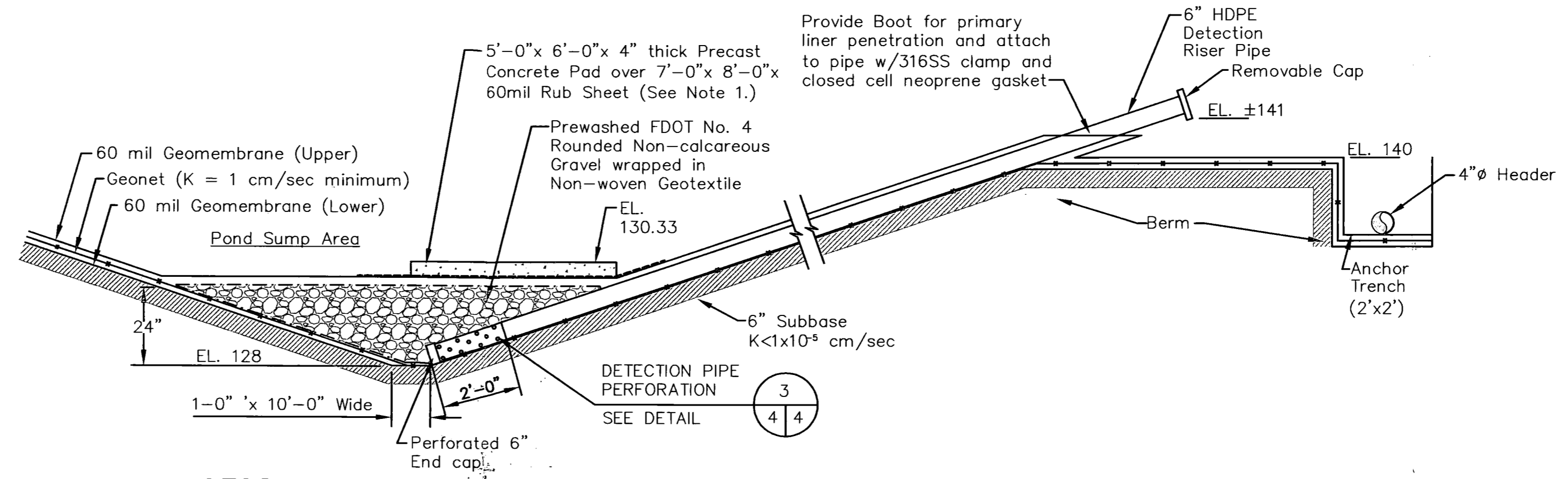
**SPRAY NOZZLE LATERAL DETAIL**  
NTS



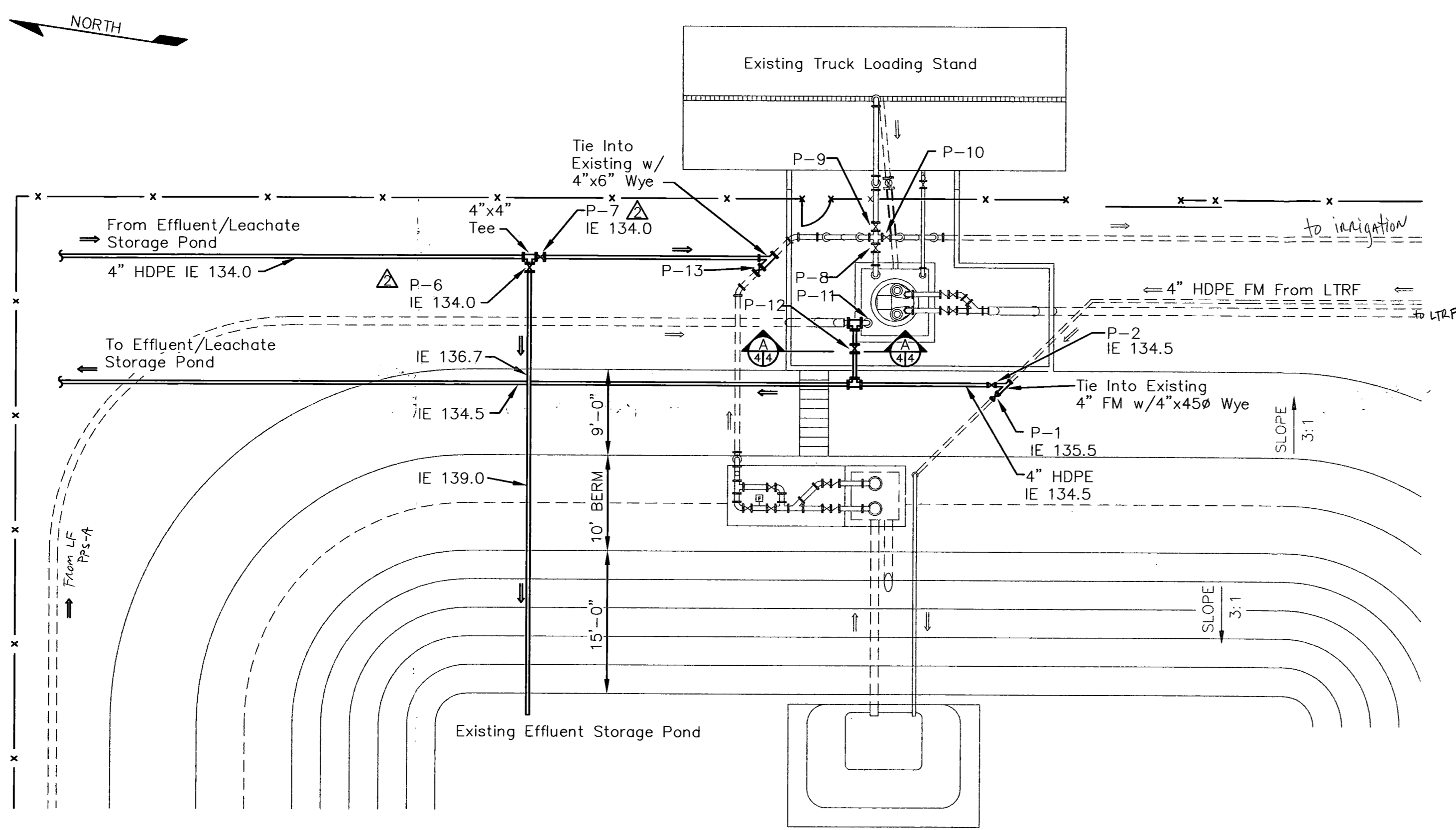
**PIPE PENETRATION THROUGH LINER DETAIL**  
NTS



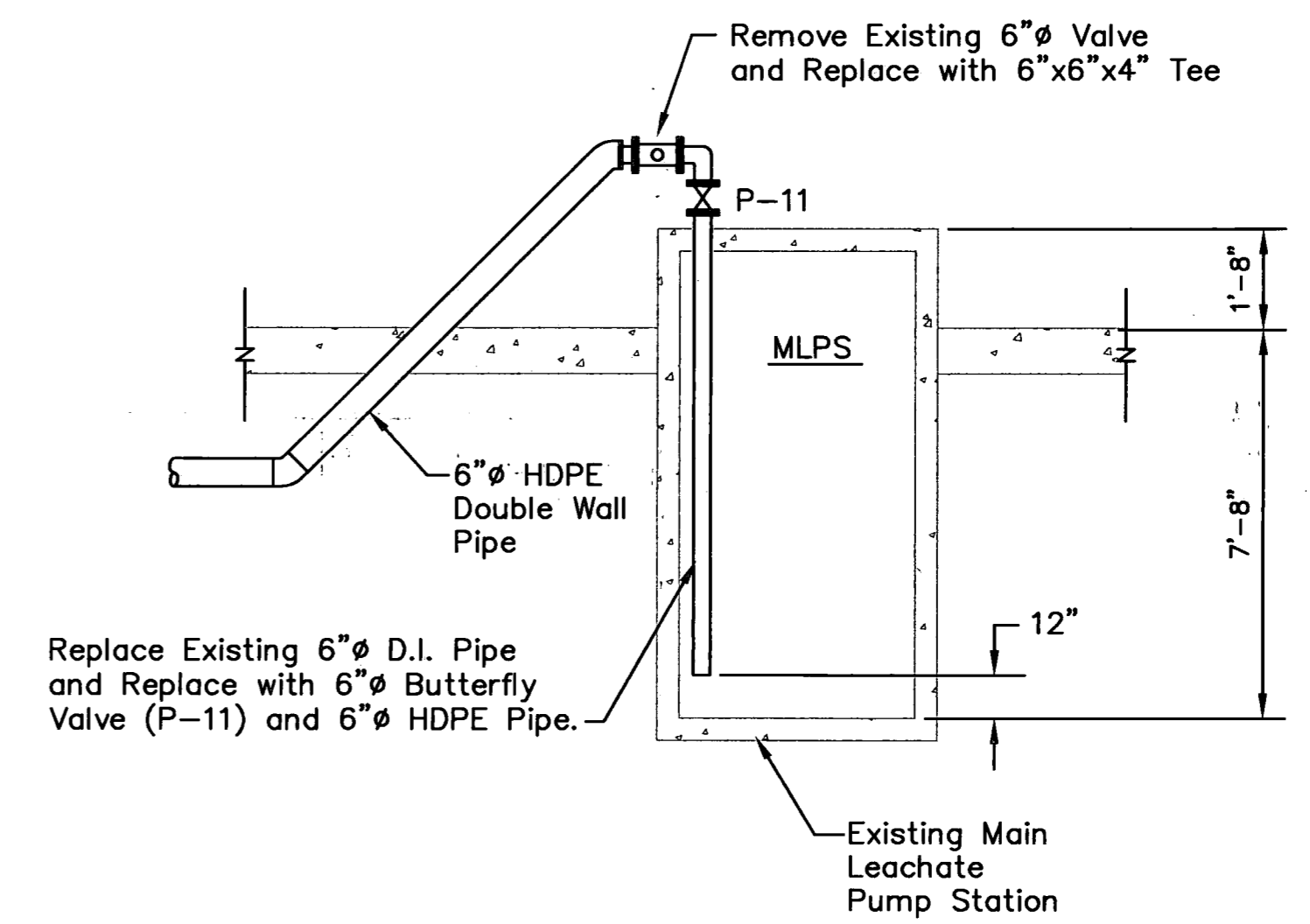
**DETECTION PIPE PERFORATION DETAIL**  
NTS



**LEACHATE DETECTION SUMP AND LINER SYSTEM SECTION**  
NTS



**PIPING MODIFICATIONS DETAIL**  
SCALE 1" = 10'



**SUMP SECTION**  
NTS

REV.	DATE	DESCRIPTION
1	2-20-01	Revised per FDEP
2	2-24-01	Revised Valve Numbers

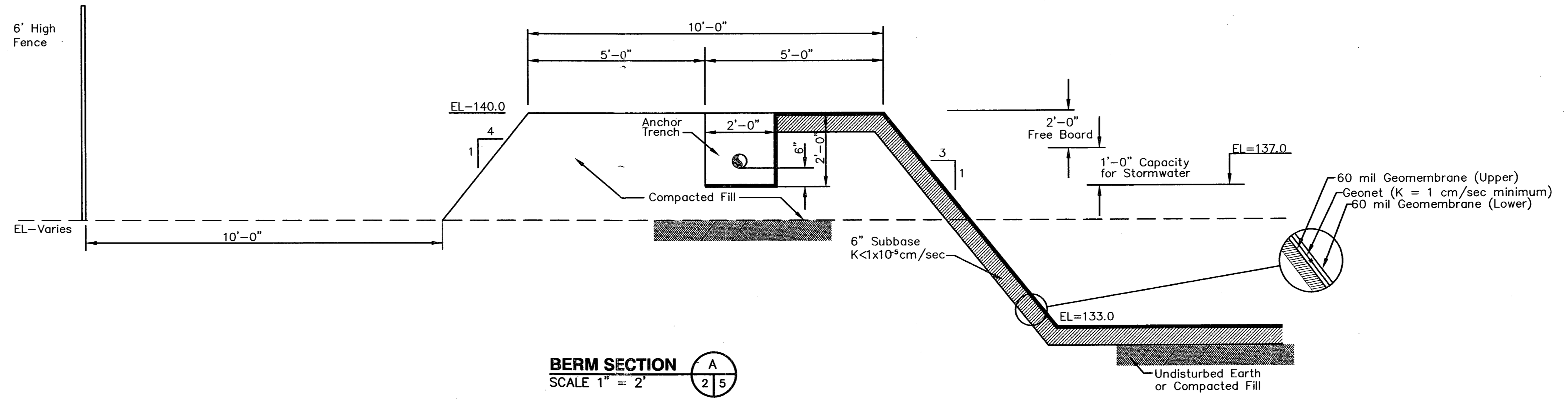
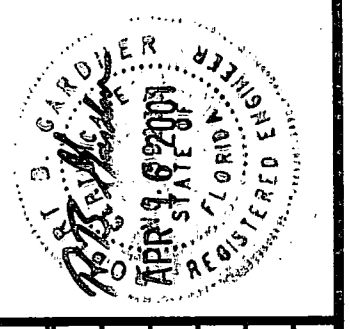
DRAWING TITLE	<b>DETAILS-2</b>
PROJECT TITLE	<b>SOUTHEAST COUNTY LANDFILL EFFLUENT/LEACHATE STORAGE POND</b>

CLIENT	<b>HILLSBOROUGH COUNTY SOLID WASTE MANAGEMENT DEPARTMENT</b>
--------	--

CADD FILE:	DEP24X36
DATE:	FEBRUARY, 2001
SCALE:	AS SHOWN
DRAWING NO.	

FLORIDA DEPARTMENT OF ENVIRONMENTAL PROTECTION	APR 24 2001
SOUTHWEST DISTRICT TAMPA	

5



Fence Notes:

1. Chain link fence, gate, fittings and accessories shall be from a single source or manufacturer.
2. Materials shall be galvanized steel and shall conform to requirements of FDOT Roadway and Traffic Design Standards, January 1998 edition, Index No. 452.
3. Do not begin installation before final grading is completed.
4. Install fence in accordance with FDOT Index No. 452 and 453, along the alignment shown on the Drawings.
5. Concrete for post bases shall be Class I, per Index No. 452.
6. Ground rods shall be placed in accordance with FDOT Standard Specifications for Road and Bridge Construction, SECTION 550 - 4.7.

Sod Notes:

1. Sod disturbed areas with dense, strongly-rooted bahia or St. Augustine sod. Sod must be free of weeds and undesirable native grasses.
2. Topsoil shall be used if necessary to ensure sod growth. This shall be at no additional cost to the COUNTY.
3. Remove sticks, rocks, rubbish larger than 2-inches prior to placing sod.
4. Sod, water, & maintain in accordance with FDOT Standard Specification Section 575 - 3.3 thru 3.5.
5. CONTRACTOR to maintain sod (water, fertilize, replace dead stands) for a period of 4 months, or until final completion of the project, whichever is longer, or until sod is judged established by PROJECT MANAGER.
6. Sod shall be accepted provided a healthy, uniform close stand of specified grass is established, free of weeds, bare or dead spots, and surface irregularities.

FLORIDA DEPARTMENT OF ENVIRONMENTAL PROTECTION  
 APR 16 2001  
 SOUTHWEST DISTRICT TAMPA

REV	DATE	DESCRIPTION
1	2-20-01	Revised per FDEP
2		
3		
4		
5		

DRAWING TITLE: **DETAILS - 3**  
 PROJECT TITLE: **SOUTHEAST COUNTY LANDFILL EFFLUENT/LEACHATE STORAGE POND**

CLIENT: **HILLSBOROUGH COUNTY SOLID WASTE MANAGEMENT DEPARTMENT**

**SCS ENGINEERS**  
 STEARNS, CONRAD AND SCHMIDT  
 CONSULTING ENGINEERS  
 2012 U.S. HWY. 301 NORTH, SUITE 700, TAMPA, FL 33619  
 PH (813) 851-0080 FAX (813) 853-6757  
 PROJ. NO. 0202020.21  
 DESIGNED BY: AM  
 CHECKED BY: LER/GRD  
 DRAWN BY: AM  
 DATE: MM/AM

CADD FILE: **DEP24X36**  
 DATE: **FEBRUARY, 2001**  
 SCALE: **AS SHOWN**  
 DRAWING NO.

6:1759:ECT:\Users\mccomb\10250220.21\dep24x36.dwg - Apr 16, 2001 - 10:24:56am - User: mccomb - Plot: 113557.dwg