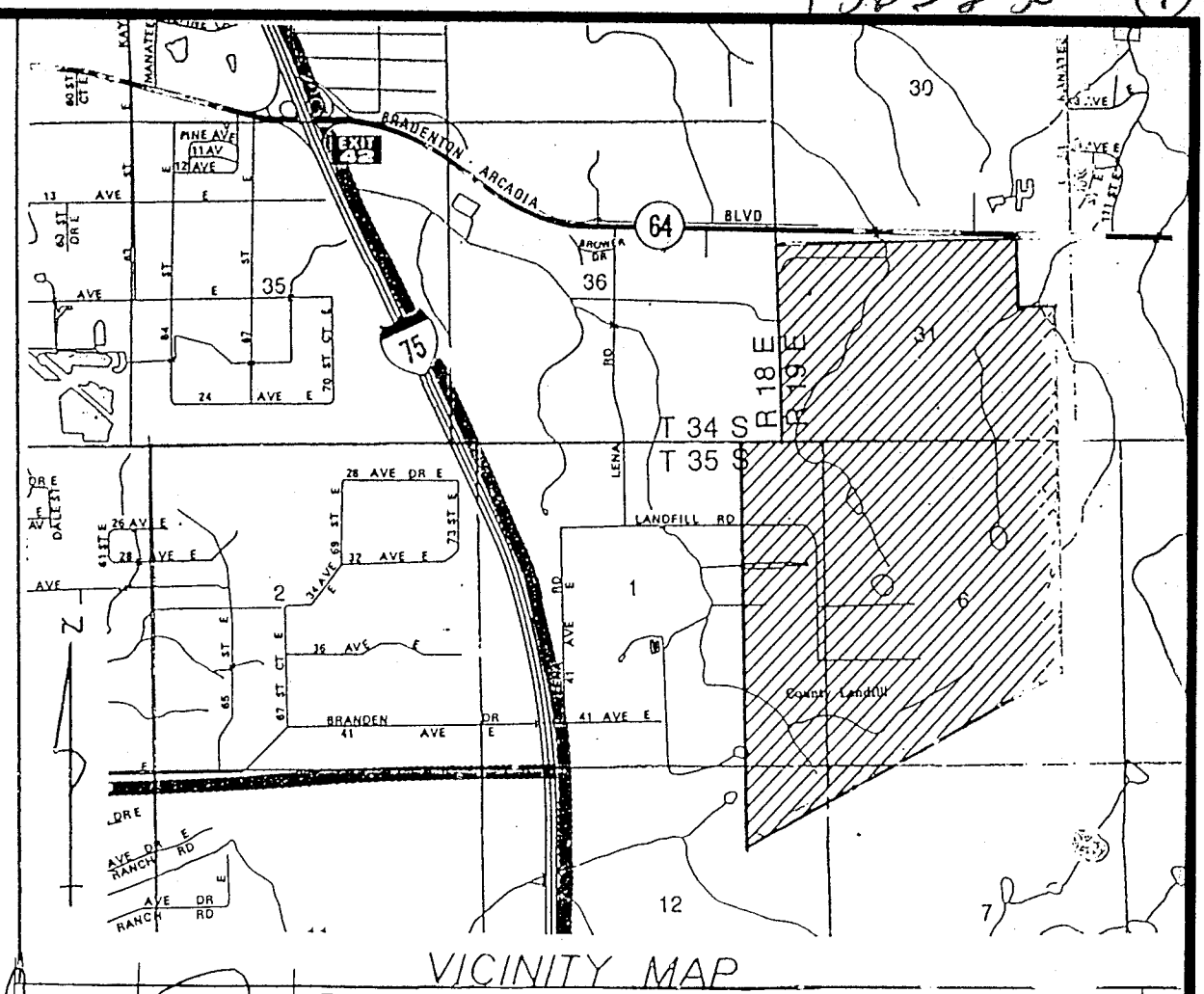


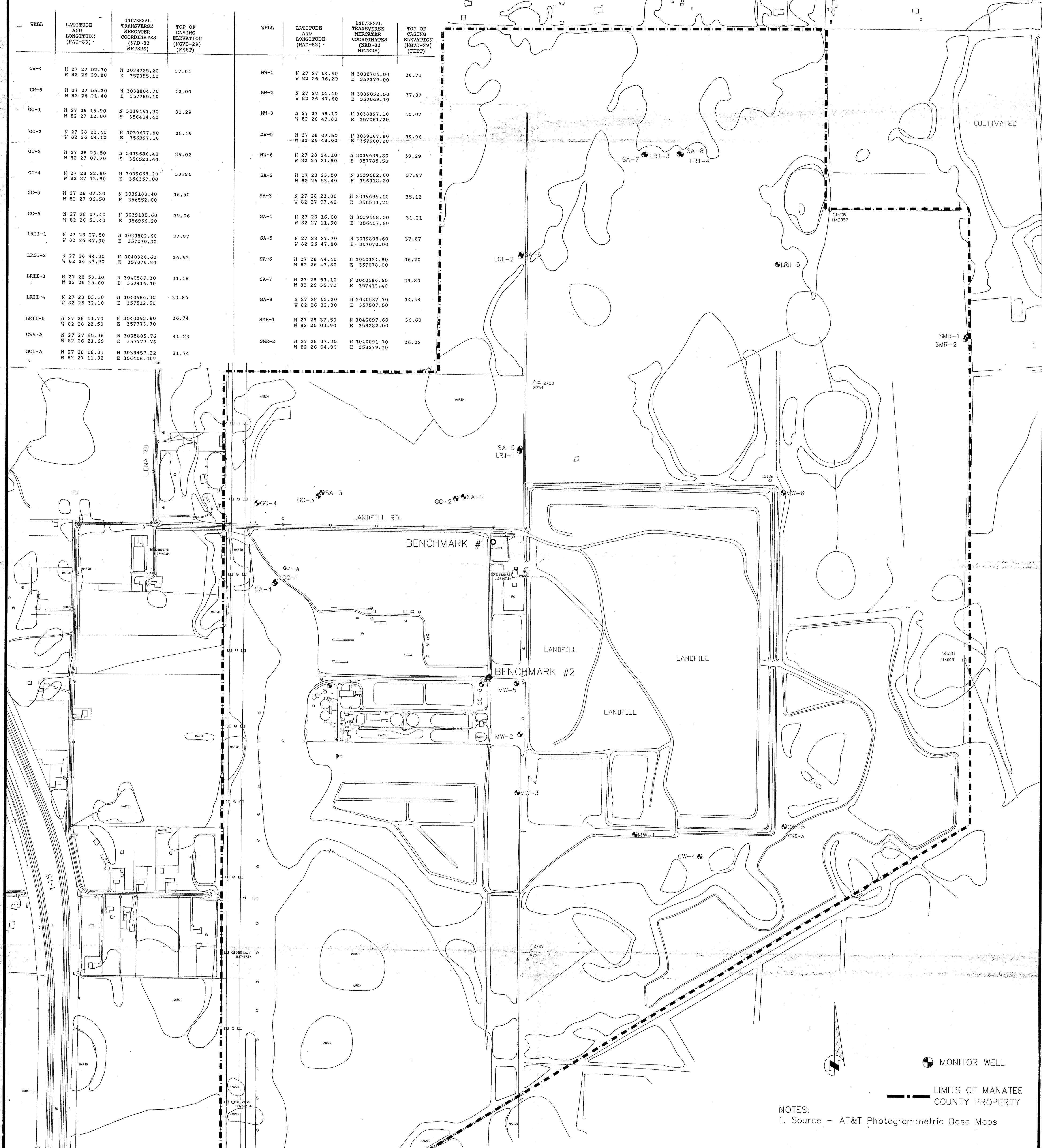
BENCHMARK #1= TOP OF NORTHEAST FLANGE BOLT OF FIRE HYDRANT, 100'± SOUTHWEST OF SCALE HOUSE, AT SOUTHEAST CORNER OF INTERSECTION. ELEVATION=37.78 (NGVD 1929)

BENCHMARK #2= SQUARE CUT AT SOUTHWEST CORNER OF BRIDGE, AT ENTRANCE TO SOUTH-EAST WATER TREATMENT PLANT. ELEVATION=36.88 (NGVD 1929)

NOTE: BENCHMARKS ARE BASED ON MANATEE COUNTY BENCHMARK RECORDS.



WELL	LATITUDE AND LONGITUDE (NAD-83)	UNIVERSAL TRANSVERSE MERCATOR COORDINATES (NAD-83 METERS)	TOP OF CASING ELEVATION (NGVD-29) (FEET)	WELL	LATITUDE AND LONGITUDE (NAD-83)	UNIVERSAL TRANSVERSE MERCATOR COORDINATES (NAD-83 METERS)	TOP OF CASING ELEVATION (NGVD-29) (FEET)
CH-4	N 27 27 52.70 W 82 26 29.80	N 3038725.20 E 357395.10	37.54	MW-1	N 27 27 54.50 W 82 26 36.20	N 3038784.00 E 357379.00	38.71
CH-5	N 27 27 55.30 W 82 26 21.40	N 3038804.70 E 357785.10	42.00	MW-2	N 27 28 03.10 W 82 26 47.60	N 3039052.50 E 357069.10	37.87
GC-1	N 27 28 15.90 W 82 27 12.00	N 3039453.90 E 356404.40	31.29	MW-3	N 27 27 58.10 W 82 26 47.80	N 3038897.10 E 357061.20	40.07
GC-2	N 27 28 23.40 W 82 26 54.10	N 3039677.80 E 356897.10	38.19	MW-5	N 27 28 07.50 W 82 26 48.00	N 3039187.80 E 357060.20	39.96
GC-3	N 27 28 23.50 W 82 27 07.70	N 3039686.40 E 356523.60	35.02	MW-6	N 27 28 24.10 W 82 26 21.80	N 3039689.80 E 356918.20	39.29
GC-4	N 27 28 22.80 W 82 27 13.80	N 3039668.20 E 356357.00	33.91	SA-2	N 27 28 23.50 W 82 26 53.40	N 3039682.60 E 356918.20	37.97
GC-5	N 27 28 07.20 W 82 27 06.50	N 3039183.40 E 356552.00	36.50	SA-3	N 27 28 23.00 W 82 27 07.40	N 3039695.10 E 356533.20	35.12
GC-6	N 27 28 07.40 W 82 26 51.40	N 3039185.60 E 356566.20	39.06	SA-4	N 27 28 16.00 W 82 27 11.90	N 3039458.00 E 356407.60	31.21
LRII-1	N 27 28 27.50 W 82 26 47.90	N 3039802.60 E 357070.30	37.97	SA-5	N 27 28 27.70 W 82 26 47.80	N 3039808.60 E 357072.00	37.87
LRII-2	N 27 28 44.30 W 82 26 47.90	N 3040320.60 E 357076.80	36.53	SA-6	N 27 28 44.40 W 82 26 47.80	N 3040324.80 E 357076.80	36.20
LRII-3	N 27 28 53.10 W 82 26 35.60	N 3040587.30 E 357416.30	33.46	SA-7	N 27 28 53.10 W 82 26 35.70	N 3040586.60 E 357412.40	39.83
LRII-4	N 27 28 53.10 W 82 26 32.10	N 3040586.30 E 357512.50	33.86	SA-8	N 27 28 53.20 W 82 26 32.30	N 3040587.70 E 357507.50	34.44
LRII-5	N 27 28 43.70 W 82 26 24.80	N 3040293.80 E 357773.70	36.74	SMR-1	N 27 28 37.50 W 82 26 03.90	N 3040097.60 E 358282.00	36.60
CMS-A	N 27 27 55.36 W 82 26 21.69	N 3038805.76 E 357777.76	41.23	SMR-2	N 27 28 37.30 W 82 26 04.00	N 3040091.70 E 358279.10	36.22
GC1-A	N 27 28 16.01 W 82 27 11.92	N 3039457.32 E 356406.409	31.74				



MONITOR WELL  
 LIMITS OF MANATEE COUNTY PROPERTY  
 NOTES:  
 1. Source - AT&T Photogrammetric Base Maps

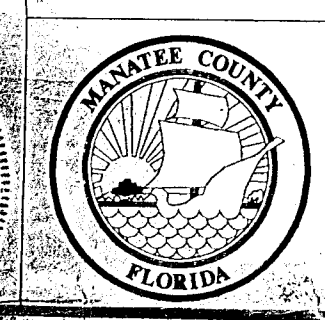
# GROUND WATER MONITORING WELLS LENA ROAD LANDFILL SITE

I HEREBY CERTIFY THAT THE WELL LOCATIONS AND ELEVATIONS SHOWN HEREON ARE THE PRODUCT OF A FIELD AND GLOBAL POSITIONING SURVEY CARRIED OUT IN ACCORDANCE WITH THE MINIMUM TECHNICAL STANDARDS FOR LAND SURVEYING IN THE STATE OF FLORIDA, CHAPTER 21 HH-6, FLORIDA ADMINISTRATIVE CODE.

BEING IN SECTIONS 1 & 12 35S 18E  
 6 & 7 35S 19E  
 31 34S 19E  
 36 34S 18E  
 MANATEE COUNTY, FLORIDA

Revised to add wells GC1-A and CY 5-A and the word, "UNIVERSAL".  
 John G. Parker, P.L.S.

7/11/93  
 DATE OF CERTIFICATE  
 JOHN G. PARKER  
 PROFESSIONAL LAND SURVEYOR  
 (NOT VALID UNLESS EMBOSSED BY SURVEYOR'S SEAL)

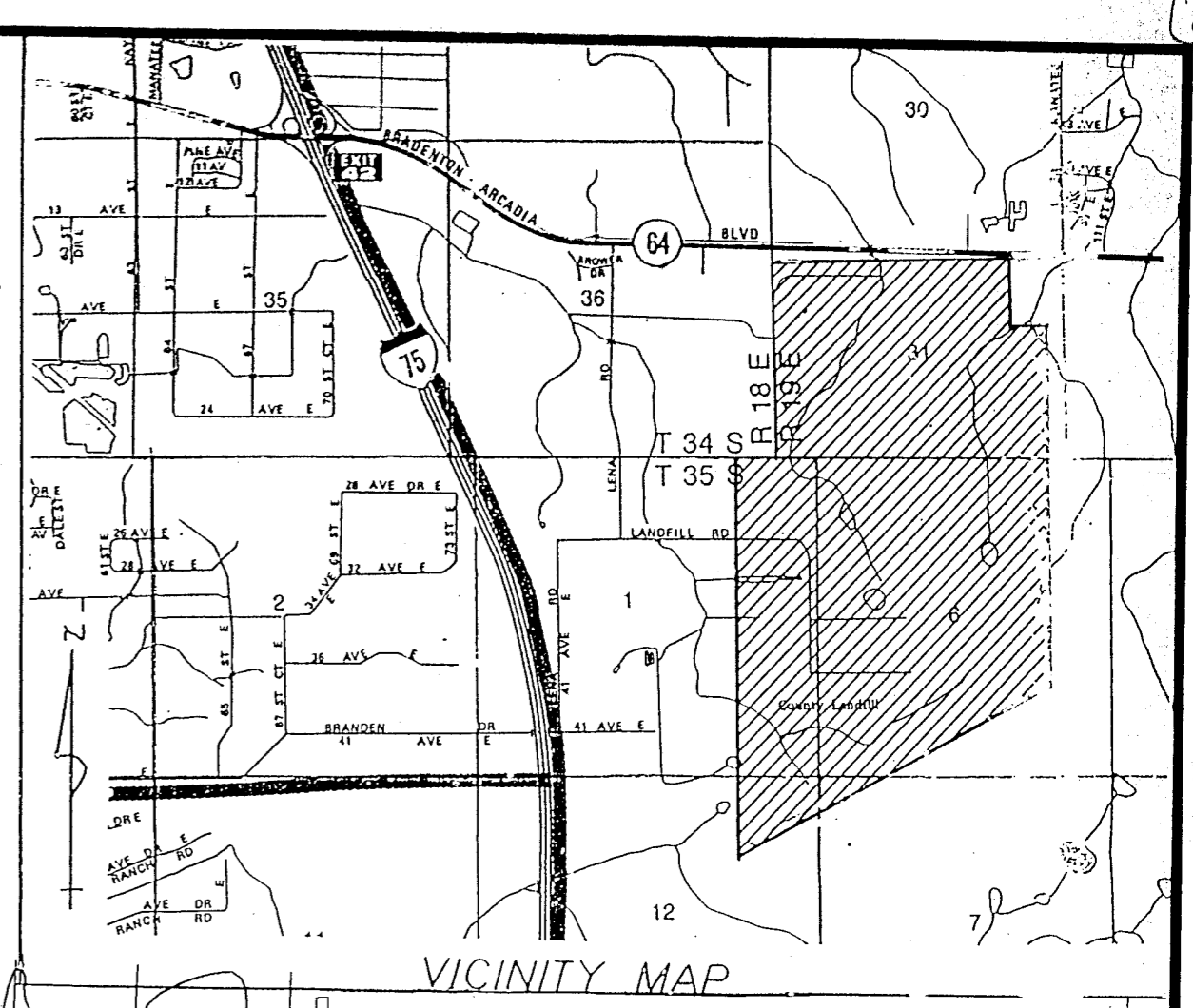


PROJECT NUMBER	480-461500-534120
SCALE	1"=400'
DRAWN BY	A.G.G.
DATE	7-13-93
DATE OF SURVEY	MAY 1993

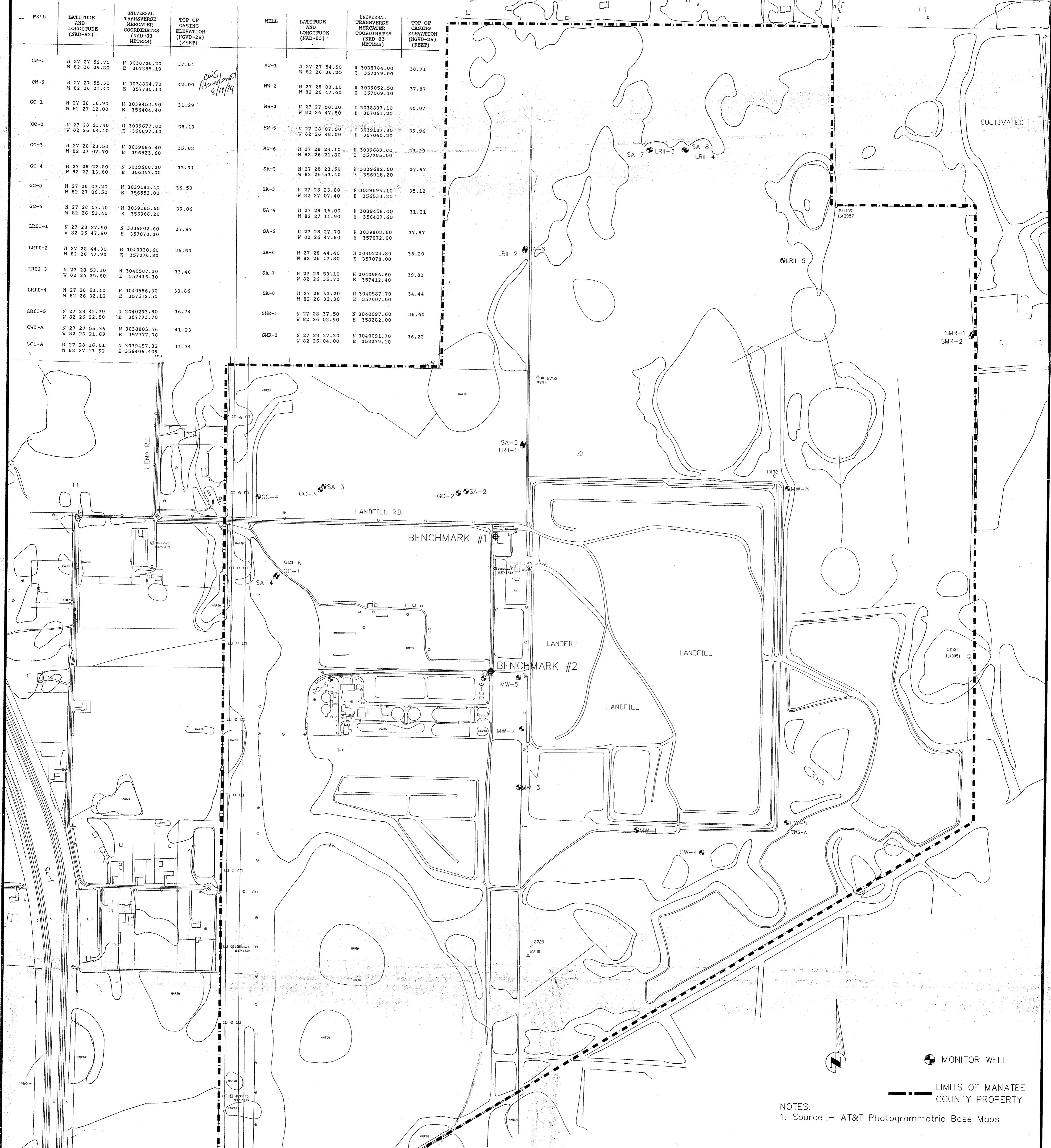
BENCHMARK #1= TOP OF NORTHEAST FLANGE BOLT OF FIRE HYDRANT, 100'± SOUTHWEST OF SCALE HOUSE, AT SOUTHEAST CORNER OF INTERSECTION. ELEVATION=37.78 (NGVD 1929)

BENCHMARK #2= SQUARE CUT AT SOUTHWEST CORNER OF BRIDGE, AT ENTRANCE TO SOUTH-EAST WATER TREATMENT PLANT. ELEVATION=36.88 (NGVD 1929)

NOTE: BENCHMARKS ARE BASED ON MANATEE COUNTY BENCHMARK RECORDS.



WELL	LATITUDE AND LONGITUDE (NAD-83)	UNIVERSAL TRANSVERSE MERCATOR COORDINATES (NAD-83 METERS)	TOP OF CASING ELEVATION (NGVD-29) (FEET)	WELL	LATITUDE AND LONGITUDE (NAD-83)	UNIVERSAL TRANSVERSE MERCATOR COORDINATES (NAD-83 METERS)	TOP OF CASING ELEVATION (NGVD-29) (FEET)
CW-4	N 27 27 52.70 W 82 26 29.80	N 3038725.20 E 357395.10	37.54	MW-1	N 27 27 54.50 W 82 26 36.20	N 3038784.00 E 357379.00	38.71
CW-5	N 27 27 55.30 W 82 26 21.40	N 3038894.70 E 357785.10	42.00	MW-2	N 27 28 03.10 W 82 26 47.60	N 3039052.50 E 357069.10	37.87
GC-1	N 27 28 15.90 W 82 27 12.00	N 3039453.90 E 356404.40	31.29	MW-3	N 27 27 58.10 W 82 26 47.80	N 3038897.10 E 357051.20	40.07
GC-2	N 27 28 23.40 W 82 26 54.10	N 3039677.80 E 356597.10	38.19	MW-5	N 27 28 07.50 W 82 26 48.00	N 3039187.80 E 357060.20	39.96
GC-3	N 27 28 23.50 W 82 27 07.70	N 3039686.40 E 356523.60	35.02	MW-6	N 27 28 24.10 W 82 26 21.80	N 3039689.80 E 357785.50	39.29
GC-4	N 27 28 22.80 W 82 27 13.80	N 3039666.20 E 356257.00	33.91	SA-2	N 27 28 23.50 W 82 26 53.40	N 3039682.60 E 356918.20	37.97
GC-5	N 27 28 07.20 W 82 27 06.50	N 3039189.40 E 356952.00	36.50	SA-3	N 27 28 23.80 W 82 27 07.40	N 3039695.10 E 356533.20	35.12
GC-6	N 27 28 07.40 W 82 26 51.40	N 3039185.60 E 356966.20	39.06	SA-4	N 27 28 16.00 W 82 27 11.90	N 3039458.00 E 356407.60	31.21
LRII-1	N 27 28 27.50 W 82 26 47.90	N 3039802.60 E 357070.30	37.97	SA-5	N 27 28 27.70 W 82 26 47.80	N 3039808.60 E 357072.00	37.87
LRII-2	N 27 28 44.30 W 82 26 47.90	N 3040320.60 E 357076.80	36.53	SA-6	N 27 28 44.40 W 82 26 47.80	N 3040324.80 E 357078.00	36.20
LRII-3	N 27 28 53.10 W 82 26 35.60	N 3040587.30 E 357416.30	33.46	SA-7	N 27 28 53.10 W 82 26 35.70	N 3040586.60 E 357412.40	39.83
LRII-4	N 27 28 53.10 W 82 26 35.10	N 3040586.30 E 357513.50	33.86	SA-8	N 27 28 53.20 W 82 26 32.30	N 3040587.70 E 357507.50	34.44
LRII-5	N 27 28 43.70 W 82 26 22.50	N 3040293.80 E 357773.70	36.74	SMR-1	N 27 28 37.50 W 82 26 03.90	N 3040097.60 E 358282.00	36.60
CW-5-A	N 27 27 55.36 W 82 26 21.69	N 3038805.76 E 357777.76	41.23	SMR-2	N 27 28 37.30 W 82 26 04.00	N 3040091.70 E 358279.10	36.22
GC1-A	N 27 28 16.01 W 82 27 11.92	N 3039457.32 E 356406.409	31.74				



MONITOR WELL  
LIMITS OF MANATEE COUNTY PROPERTY  
NOTES:  
1. Source - AT&T Photogrammetric Base Maps

# GROUND WATER MONITORING WELLS LENA ROAD LANDFILL SITE

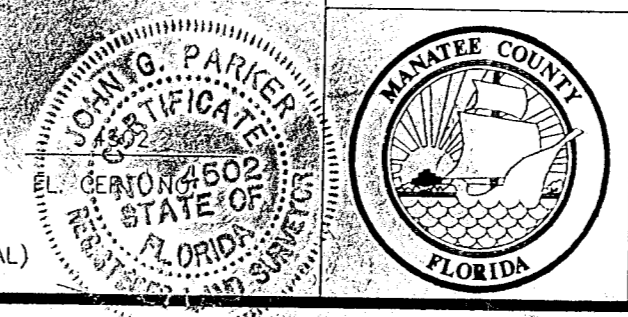
I HEREBY CERTIFY THAT THE WELL LOCATIONS AND ELEVATIONS SHOWN HEREON ARE THE PRODUCT OF A FIELD AND GLOBAL POSITIONING SURVEY CARRIED OUT IN ACCORDANCE WITH THE MINIMUM TECHNICAL STANDARDS FOR LAND SURVEYING IN THE STATE OF FLORIDA CHAPTER 21 HH-6, FLORIDA ADMINISTRATIVE CODE.

BEING IN SECTIONS 1 & 12 35S 18E  
6 & 7 35S 19E  
31 34S 19E  
36 34S 18E  
MANATEE COUNTY, FLORIDA

RECEIVED  
NOV 15 1994  
Department of Environmental Protection  
SOUTHWEST DISTRICT

Revised to add wells GC1-A and CW 5-A and the word, "UNIVERSAL".  
John G. Parker, P.L.S.

7/1/93  
DATE OF CERTIFICATE  
JOHN G. PARKER  
PROFESSIONAL LAND SURVEYOR  
(NOT VALID UNLESS EMBOSSED BY SURVEYOR'S SEAL)



PROJECT NUMBER	480-461500-534120
SCALE	"=400'
DRAWN BY	A.C.G.
DATE	7-13-93
DATE OF SURVEY	MAY 1993

