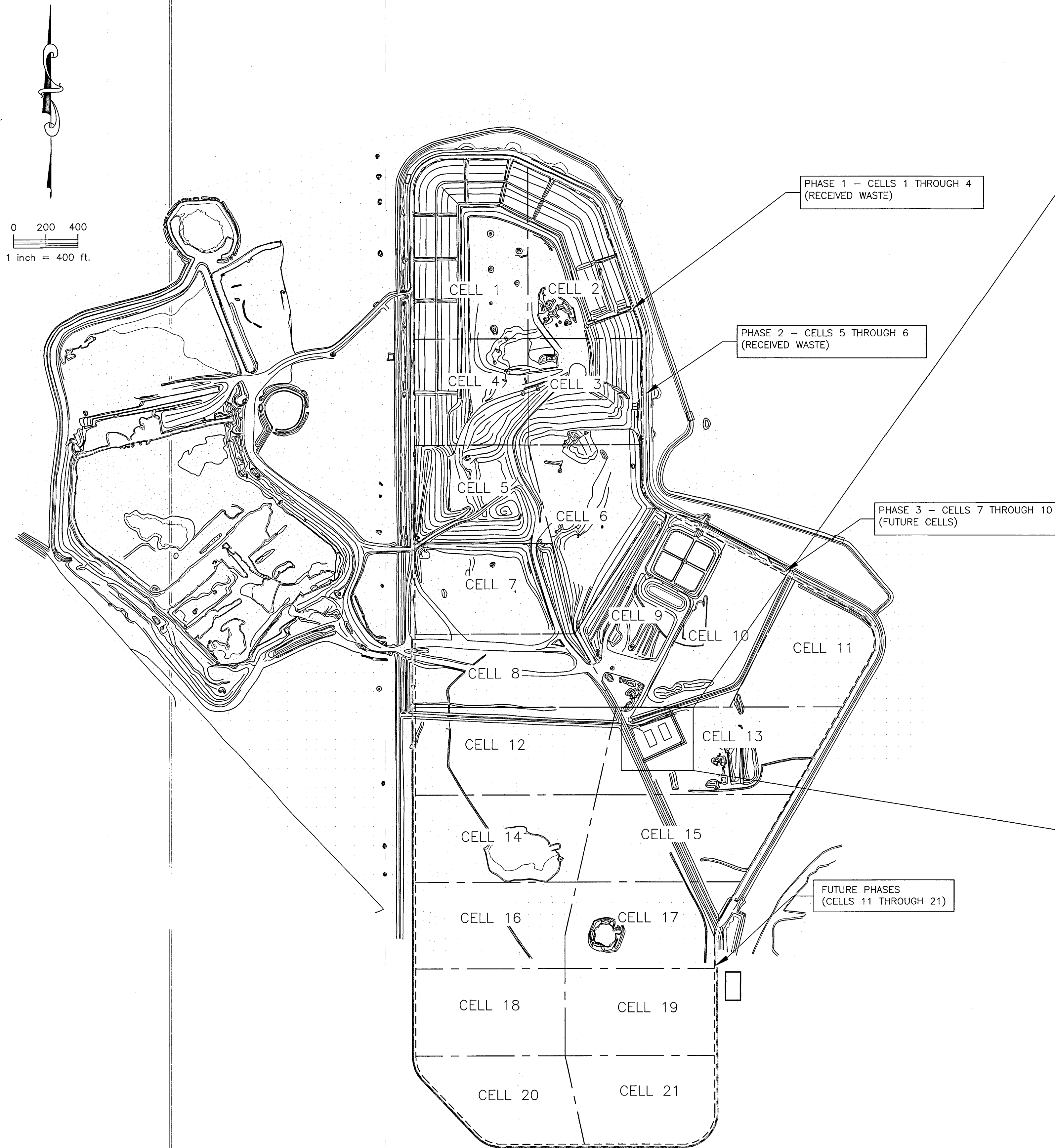
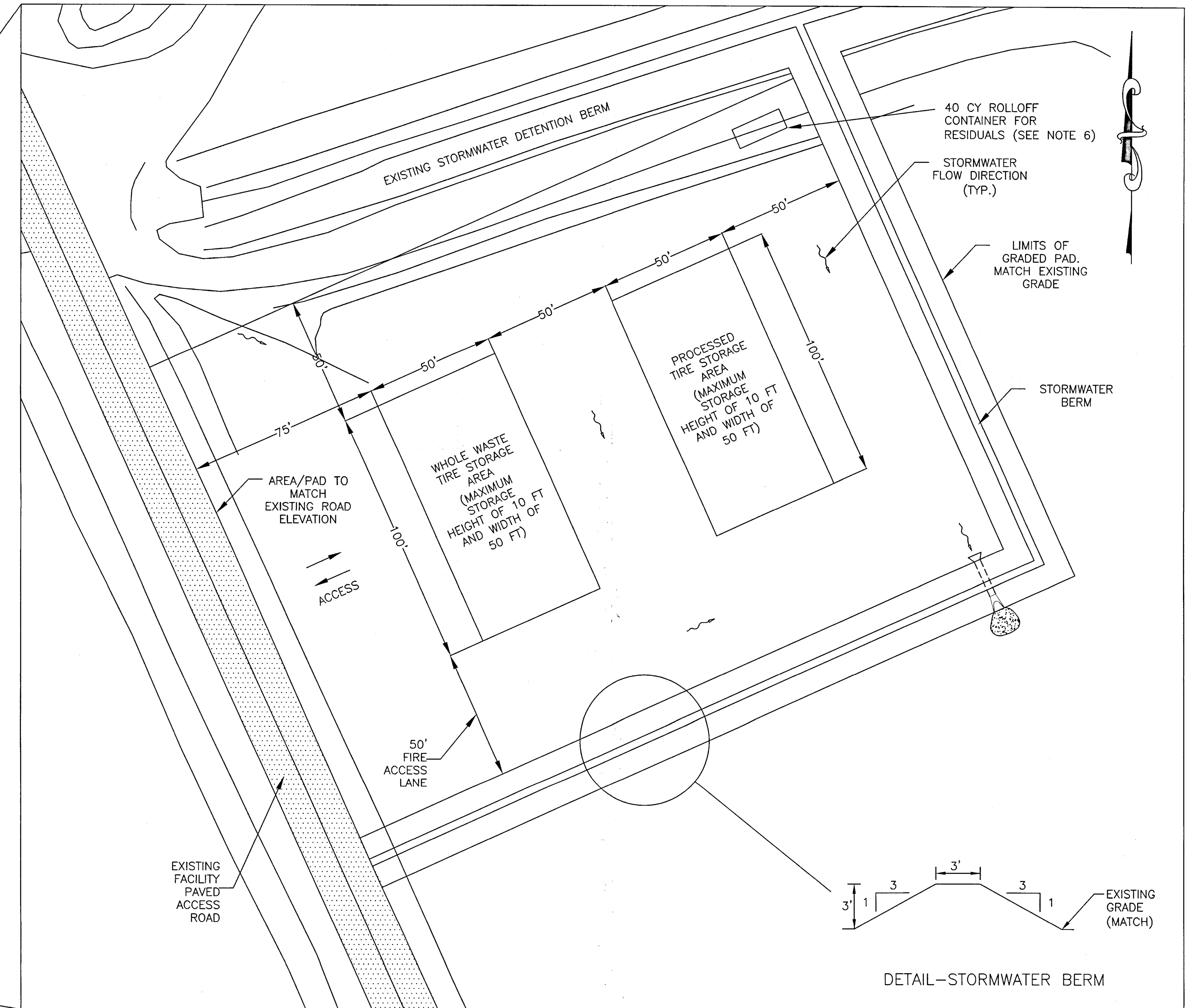


EXISTING TOPOGRAPHIC PLAN



WASTE TIRE STORAGE AND PROCESSING AREA



SCALE: 1"=30'

*NOTES:

1. THE WASTE TIRE STORAGE AND PROCESSING AREA WILL BE LOCATED IN THE AREA OF CELL 13 OF FUTURE PHASES, AS SHOWN.
2. THE AREA WILL BE GRADED TO DIRECT STORM WATER AWAY FROM THE WASTE TIRE COLLECTION AND PROCESSING AREA TO THE SOUTHEAST CORNER.
3. AREA WILL BE CONSTRUCTED WITH ROAD BASE MATERIAL AND MAINTAINED FOR VEHICLE ACCESS.
4. 50 FT. MINIMUM SPACING WILL BE PROVIDED AROUND AND BETWEEN ALL STOCKPILES FOR EMERGENCY ACCESS.
5. MOBILE TIRE PROCESSING (SHREDDING) EQUIPMENT WILL BE STATIONED NEAR THE SHOWN STOCKPILE LIMITS DURING PROCESSING.
6. 40-CY ROLLOFF CONTAINER FOR RESIDUALS WILL BE STAGED AS SHOWN. CONTAINER WILL BE REMOVED WHEN PROCESSING IS COMPLETE.
7. TOPOGRAPHIC INFORMATION OBTAINED FROM DRAWING PREPARED BY BASE MAPPING DATED JULY 25, 2009.



HDR ENGINEERING, INC.
510 NW 33RD AVENUE
SUITE 212
FT. LAUDERDALE, FLORIDA 33309

| ISSUE | DATE | DESCRIPTION |
|-------|-------------|-------------|
| 2 | 17 MAR 2010 | RAI #2 |
| 1 | 16 FEB 2010 | RAI #1 |

| | |
|-----------------|------------------------------|
| PROJECT MANAGER | BRENDA ANN SMITH CLARK, P.E. |
| PE. NO. | 42754 |
| PROJECT NUMBER | 116377 |

OMNI WASTE OF OSCEOLA COUNTY, LLC.
MINOR MODIFICATION APPLICATION
J.E.D. SOLID WASTE MANAGEMENT FACILITY
ST. CLOUD, FLORIDA

| | | |
|--|------------|-------|
| SITE PLAN FOR WASTE TIRE STORAGE AND PROCESSING OPERATIONS | | |
| FILENAME | 00C-02.DWG | SHEET |
| SCALE | | 3 |