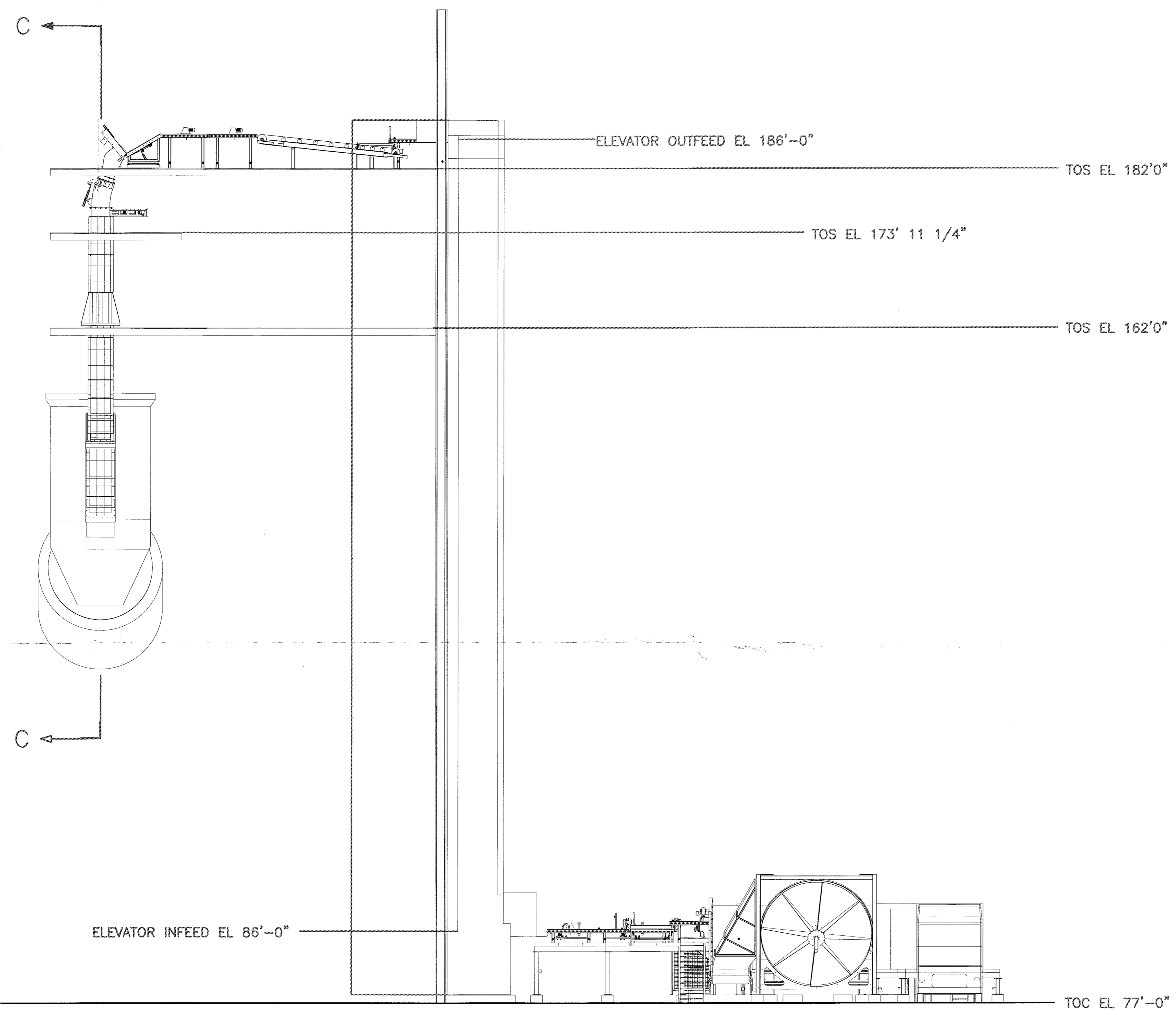


DATED: NOV 20 2009
 DEPARTMENT OF ENVIRONMENTAL PROTECTION



WEST ELEVATION
SECTION A-A

"CERTIFIED"

CONTRACTOR NAME : AMERFA
 CONTRACTOR NO. : 7401-7758
 POLYSIUS P.O. NO. : 58727
 POLYSIUS AAT NO. : 461.BC01
 POLYSIUS DOC. I.D. : 2556

FLORIDA DEPARTMENT OF
 ENVIRONMENTAL PROTECTION
 NOV 20 2009
 SOUTHWEST DISTRICT
 TAMPA

REV. NO.	DATE	BY	DESCRIPTION
<small>The information contained herein is confidential and the property of AFS Technology, LLC. It is not intended for any publication and is limited only to those individuals that the user thereof shall be communicated to a third party without written authorization from AFS Technology, LLC.</small>			
AFS technology <small>Alternative fuel system solutions for industry</small>		4080 Gibson Dr Tipp City, Ohio 45371 USA	
TITLE AMERICAN CEMENT, SUMTERVILLE FLORIDA WHOLE TIRE FEED SYSTEM WEST ELEVATION LAYOUT			
DRAWN BY	A.BOWMAN	SCALE	NONE
CHECKED BY		APPROVED	
DWG. NO.	603GA04		DATE
			10/10/07
			PROJECT#
			SHEET NO.
			4 OF 6

Figure 9