

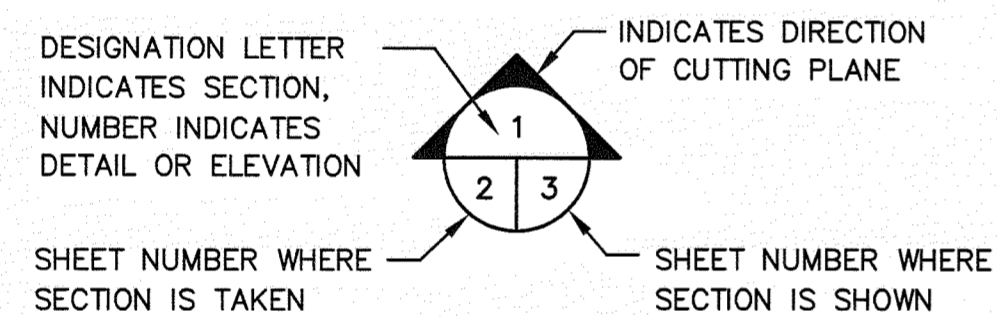
SOUTHEAST COUNTY LANDFILL

LANDFILL GAS COLLECTION AND CONTROL SYSTEM PROJECT

HILLSBOROUGH COUNTY SOLID WASTE MANAGEMENT DEPARTMENT

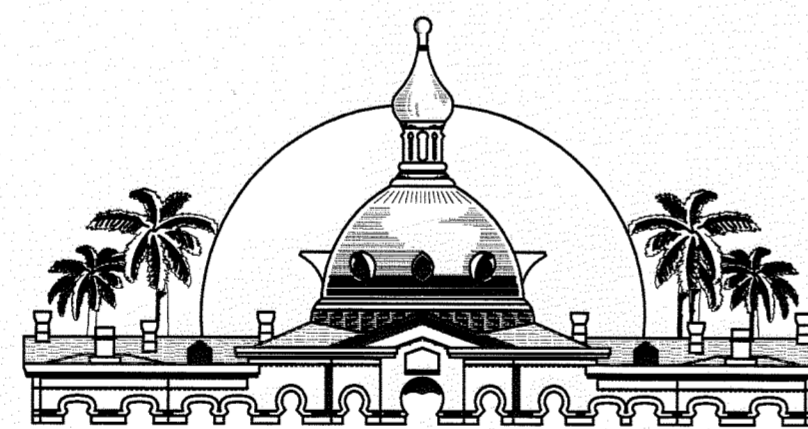
**TAMPA, FLORIDA
OCTOBER 8, 2008**

SECTION AND DETAIL DESIGNATION



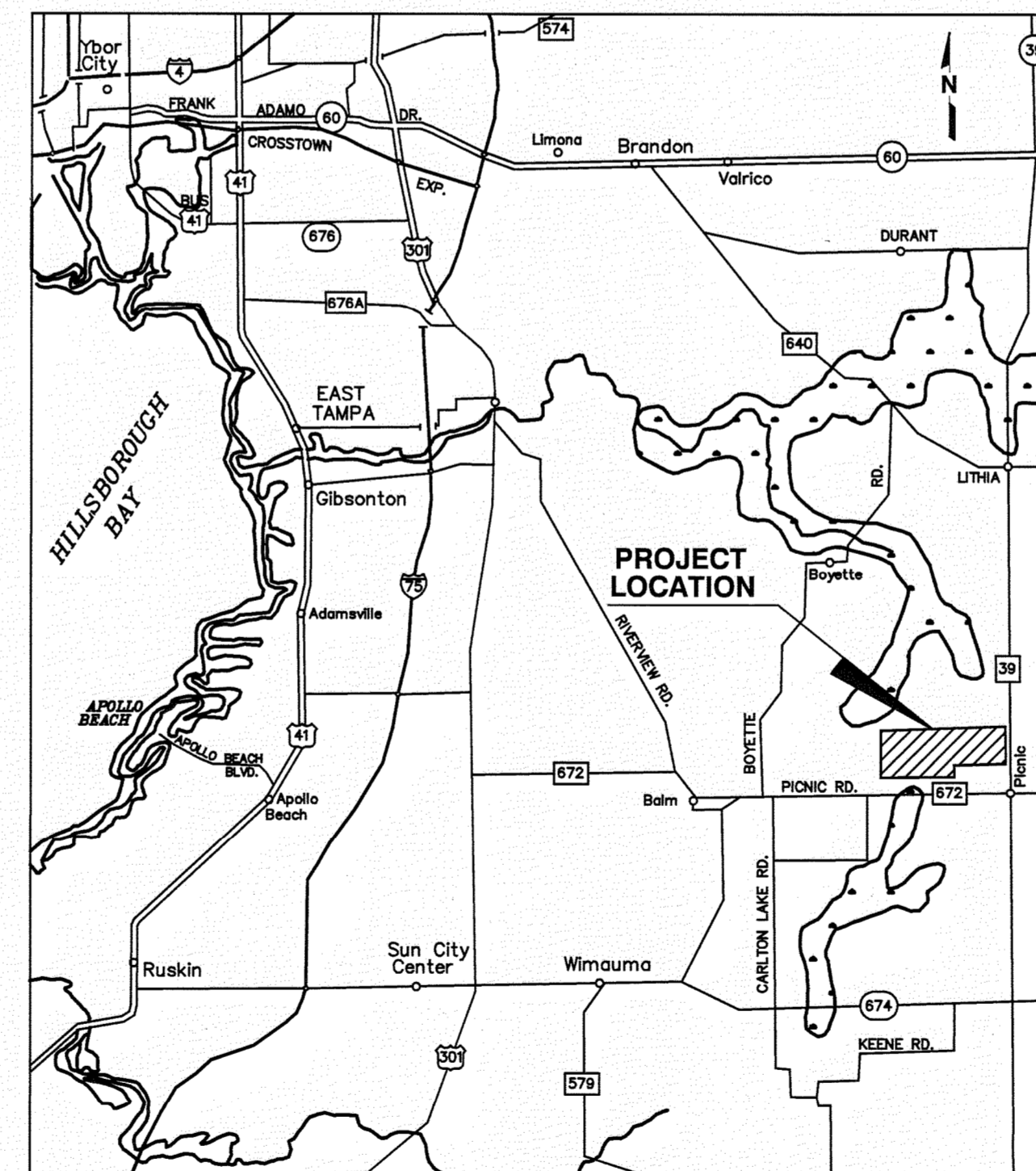
ABBREVIATIONS

APPROX.	APPROXIMATE
CTRD	CENTERED
ERCPC	ELLIPTICAL REINFORCED CONCRETE PIPE
ELEV.	ELEVATION
I.E.	INVERT ELEVATION
LF	LINEAR FEET
EXIST.	EXISTING
SCH.	SCHEDULE
TYP.	TYPICAL
Ø	DIAMETER
CONC.	CONCRETE
W/	WITH
CMP	CORRUGATED METAL PIPE
MIN.	MINIMUM
MAX.	MAXIMUM
HDPE	HIGH DENSITY POLYETHYLENE
FDOT	FLORIDA DEPARTMENT OF TRANSPORTATION
NO.	NUMBER
N.I.C.	NOT IN CONTRACT



BOARD OF COUNTY COMMISSIONERS

KEVIN BECKNER, Commissioner
ROSE FERLITA, Commissioner
KEN HAGAN, Commissioner
JIM NORMAN, Commissioner
KEVIN WHITE, Commissioner
MARK SHARPE, Commissioner
AL HIGGINBOTHAM, Commissioner



LOCATION MAP

SCS ENGINEERS
STEARNS, CONRAD AND SCHMIDT
CONSULTING ENGINEERS
 4041 PARK OAKS BLVD., SUITE 100
 TAMPA, FLORIDA 33610
 PH (813) 621-0090 FAX NO. (813) 623-6757
 WWW.SCSENGINEERS.COM
 FL COA No. 00004892
 SCS PROJECT NO. 09207055.00

DRAWING NO.	DRAWING TITLE
-------------	---------------

1	TITLE SHEET
2	SITE PLAN - EXISTING CONDITIONS
3	OVERALL SITE PLAN
4	SITE PLAN - 1
5	SITE PLAN - 2
6	SITE PLAN - 3
7	SITE PLAN - BLOWER/FLARE STATION
8	DETAILS - 1
9	DETAILS - 2
10	DETAILS - 3
11	DETAILS - 4
12	DETAILS - 5
13	DETAILS - 6
14	DETAILS - 7
15	DETAILS - 8
16	DETAILS - BLOWER/FLARE STATION
17	P & ID - BLOWER/FLARE STATION
S-1	BLOWER/STORAGE BUILDINGS - FLOOR PLAN
S-2	BLOWER/STORAGE BUILDINGS - BLOWER BUILDING ELEVATIONS
S-3	BLOWER/STORAGE BUILDINGS - STORAGE BUILDING ELEVATIONS
S-4	BLOWER/STORAGE BUILDINGS - FOUNDATION PLAN
S-5	BLOWER/STORAGE BUILDINGS - ROOF FRAMING PLAN
S-6	BLOWER/STORAGE BUILDINGS - CROSS SECTIONS
S-7	BLOWER/STORAGE BUILDINGS - GENERAL NOTES
S-8	BLOWER/STORAGE BUILDINGS - PRODUCT APPROVAL 1
S-9	BLOWER/STORAGE BUILDINGS - PRODUCT APPROVAL 2
S-10	BLOWER/STORAGE BUILDINGS - PRODUCT APPROVAL 3
E-1	POWER PLAN AND GENERAL NOTES
E-2	RISER DIAGRAM AND PANEL SCHEDULES
E-3	ELECTRICAL LINE DIAGRAM
SURVEY	SOUTHEASTERN SURVEYING, INC. AS-BUILT SURVEY, DATE 12-16-09

Dept. of Environmental
 Protection
 APR 16 2010
 Southwest District

RECORD DRAWING SET

THIS RECORD DRAWING HAS BEEN PREPARED BASED ON INFORMATION PROVIDED BY OTHERS. THE ENGINEER HAS NOT VERIFIED THE ACCURACY OF THIS INFORMATION AND SHALL NOT BE RESPONSIBLE FOR ANY ERRORS OR OMISSIONS WHICH MAY BE INCORPORATED HEREIN AS A RESULT.

SCS ENGINEERS Date: APRIL 2010

RECORD DRAWING SET

DATE: APRIL 15, 2010

RAYMOND J. DEVER, P.E.
 FL P.E. No. 43031