

FILE COPY



RECEIVED

MAY 20 2010

DEP Central Dist.

1501 Omni Way, St. Cloud, FL 34773

May 10, 2010

Mr. F. Thomas Lubozynski, P.E.
Waste Program Administrator
Florida Department of Environmental Protection, Central District
3319 Maguire Boulevard, Suite 232
Orlando, Florida 32803-3767

Re: Construction Drawings, Landfill Gas Collection and Control System - Sequence
3A, Phase 1 Disposal Area
JED Solid Waste Management Facility
Osceola County, Florida
Permit Nos. SC-0197726-004 and S049-0199726-005

Dear Mr. Lubozynski:

Omni Waste of Osceola County, LLC (Omni) is submitting the enclosed construction drawings for installation of the Gas Collection and Control System (GCCS), Sequence 3A, for the JED Solid Waste Management Facility. The landfill gas wells and lateral piping shown on the drawings consist of remaining wells and piping required in Cells 1, 2 & 4 and two additional wells in the sideslope area of Cell 3. The layout of the wells and piping for this Sequence 3A are consistent with the design drawings submitted for the Phase 1 area, which were approved by the Florida Department of Environmental Protection, Central District, on May 20, 2008.

Please note the Phase 1 design submitted in 2008 only included a Sequence 3 series of landfill gas wells and lateral piping. Due to filling progress, the Sequence 3 system has been divided into two subsequences (3A and 3B). Installation of Sequence 3A is planned for June of this year and Sequence 3B for this fall or early spring of 2011. Both schedules meet the five-year/two-year criteria of the New Source Performance Standards §60.752(b)(2)(ii)(A)(2)(i)&(ii).

If you have any questions or require any additional information, please contact me at (904) 673-0446 or mkaiser@wsii.us at your earliest convenience.

Sincerely,

A handwritten signature in black ink that reads "Mike Kaiser". The signature is written in a cursive, flowing style.

Mike Kaiser
V.P., Environmental Management and Engineering, US

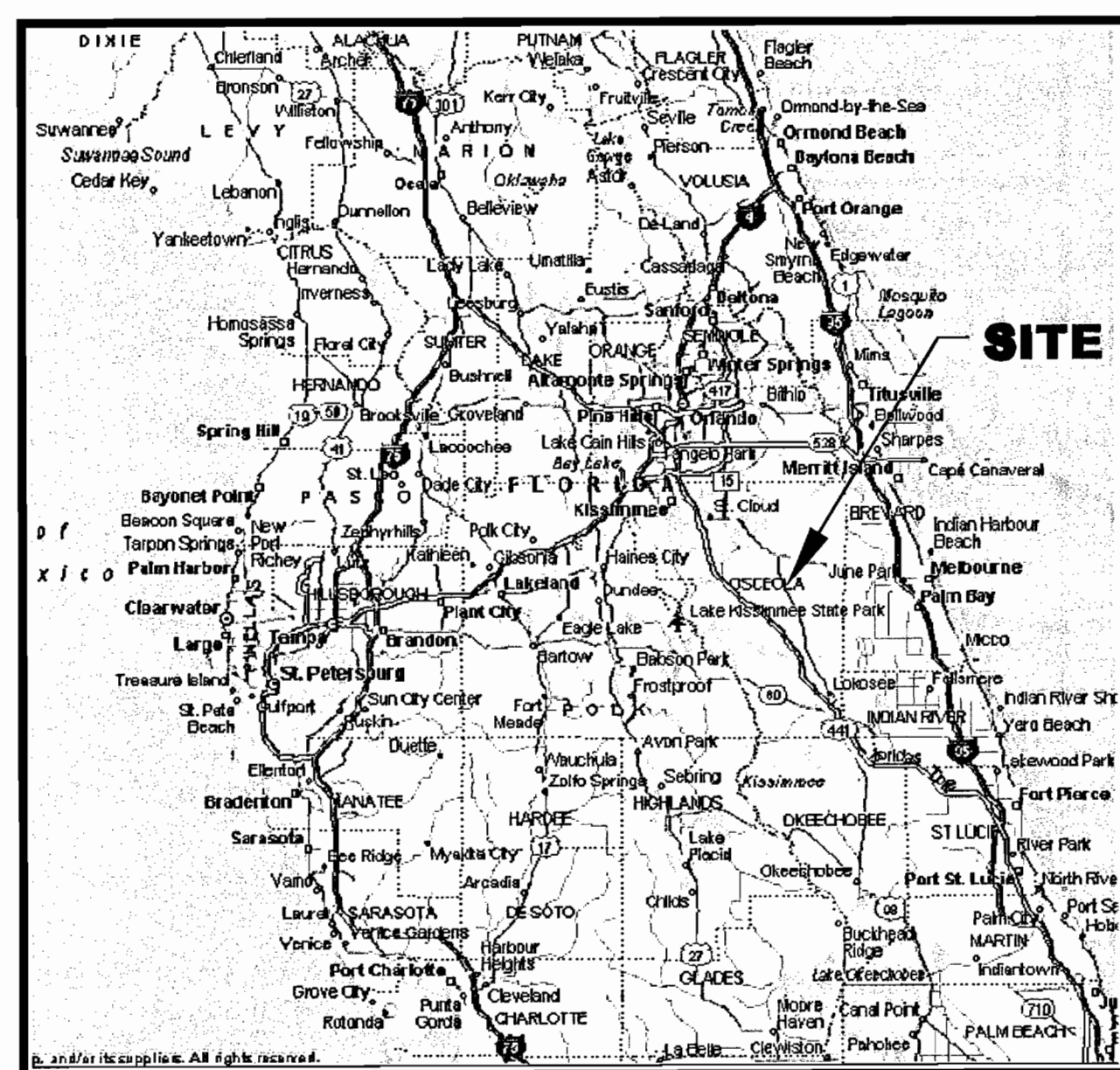
Attachments

1-Copy Drawings

Cc: Ms. Caroline Shine, FDEP Air Resources Management – Central District (1 Copy Drawing Set)

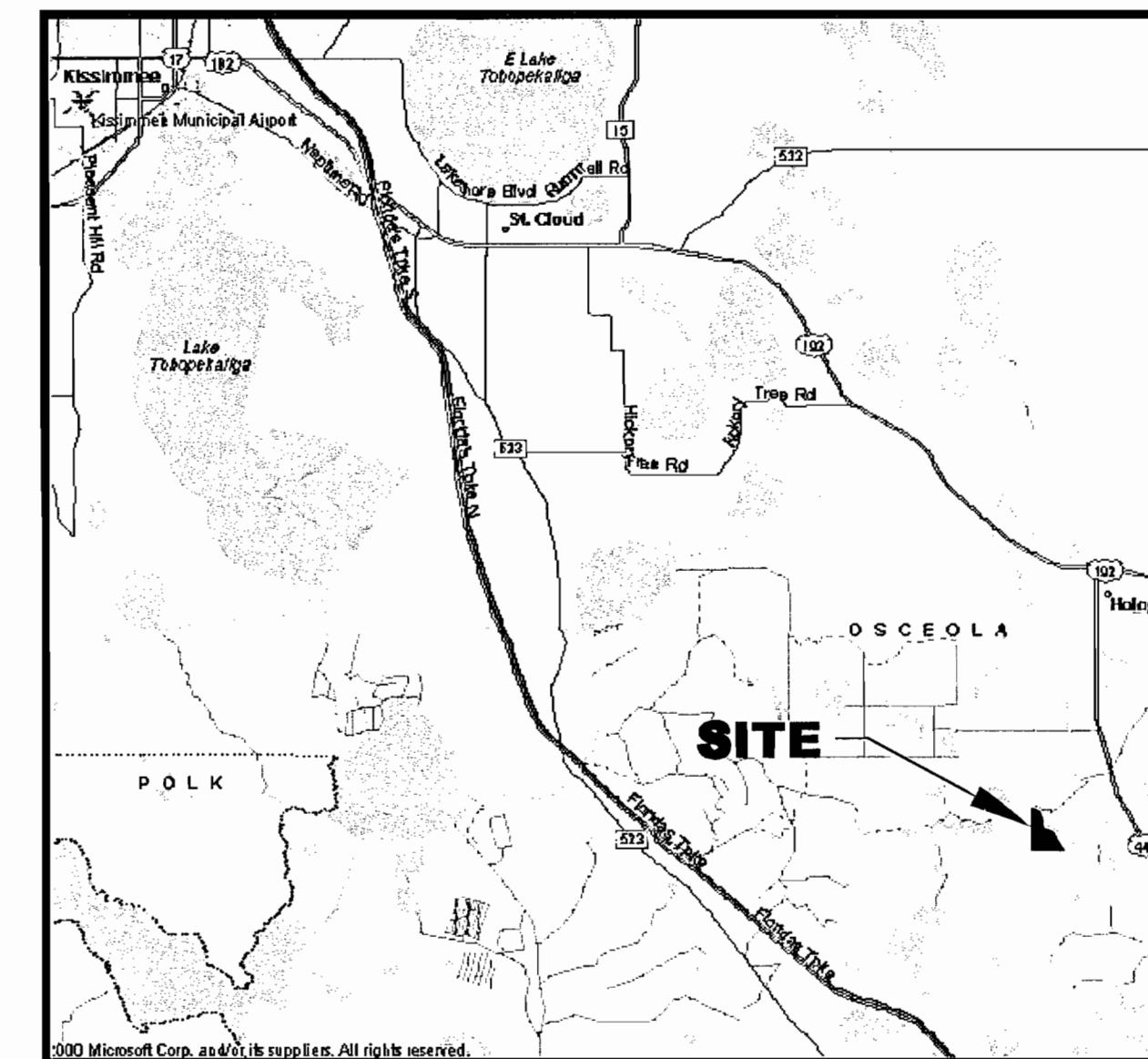


J.E.D. SOLID WASTE MANAGEMENT FACILITY ST.CLOUD, FLORIDA GAS COLLECTION AND CONTROL SYSTEM (GCCS) PHASE I DISPOSAL AREA APRIL 2010



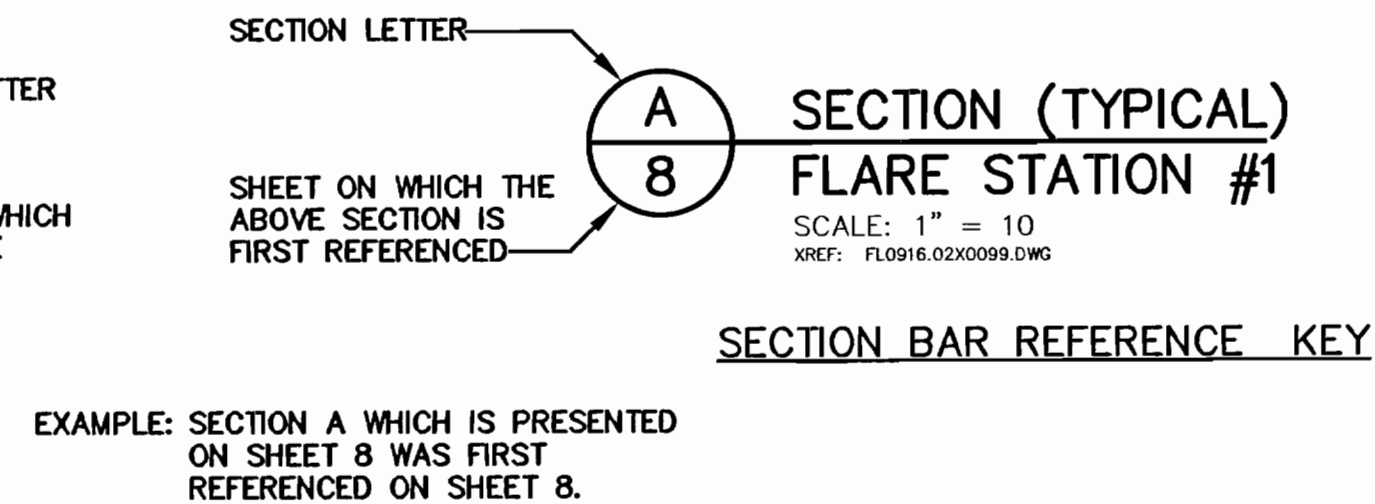
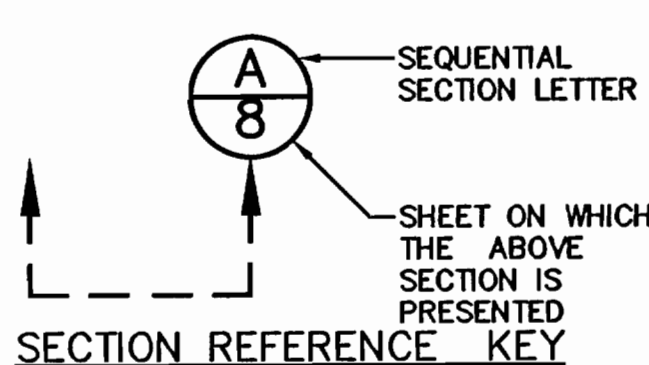
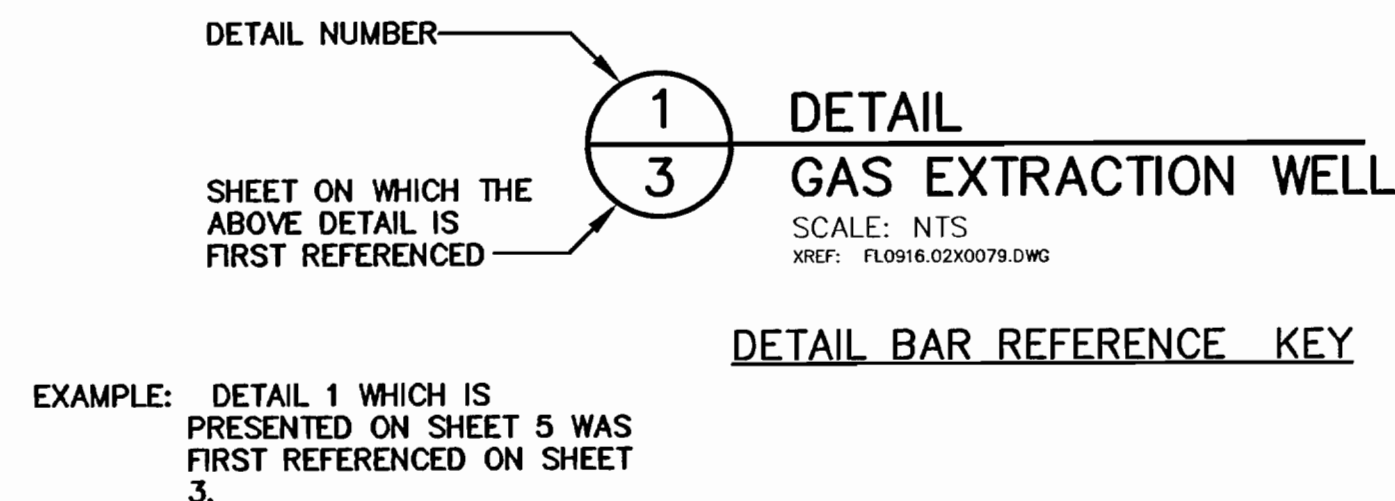
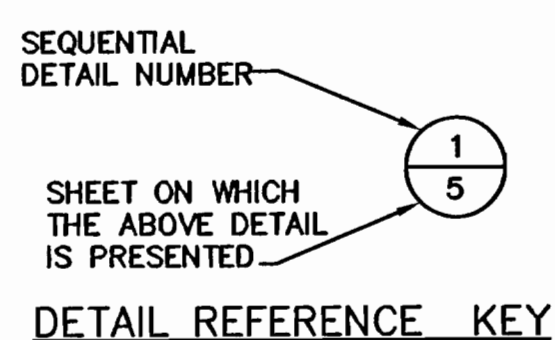
LOCATION MAP
0 32
SCALE: 1" = 32 MILES

LIST OF DRAWINGS	
DRAWING NO.	DRAWING TITLE
1	TITLE SHEET
2	TOPOGRAPHY MAP
3	PLAN LAYOUT OF GCCS IN PHASE I
4	PLAN LAYOUT OF GCCS IN PHASE I (SEQUENCE 3A)
5	CONTROL POINTS
6	GAS EXTRACTION WELLS DETAILS
7	GCCS DETAILS I
8	GCCS DETAILS II



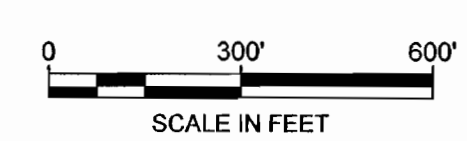
VICINITY MAP
0 4
SCALE: 1" = 4 MILES

RECEIVED
MAY 20 2010
DEP Central Dist.



REV	DATE	DESCRIPTION	DRN	APP
<div style="display: flex; justify-content: space-between;"> <div style="text-align: center;"> <p>Geosyntec consultants</p> <p>1200 RIVERPLACE BOULEVARD, SUITE 710 JACKSONVILLE, FLORIDA 32207 USA PHONE: 904.858.1818 - FAX: 904.398.1143 AUTHORIZATION CERTIFICATE NO. 4321</p> </div> <div style="text-align: center;"> <p>WSI Waste Services, Inc.</p> <p>1501 OMNI WAY ST. CLOUD, FLORIDA 34773 TEL: 407-891-3720 FAX: 407-891-3730</p> </div> </div>				
TITLE:		TITLE SHEET		
PROJECT:		GAS COLLECTION AND CONTROL SYSTEM (GCCS) PHASE I DISPOSAL AREA - SEQUENCE 3A		
SITE:		J.E.D. SOLID WASTE MANAGEMENT FACILITY		
THIS DRAWING MAY NOT BE ISSUED FOR PROJECT TENDER OR CONSTRUCTION, UNLESS SEALED.		DESIGN BY:	WT	DATE: April 2010
		DRAWN BY:	JJA	PROJECT NO.: FL1832.01
		CHECKED BY:	WT	FILE: FL1452.03P010
		REVIEWED BY:	KBT	DRAWING NO.: 1 OF 8
		APPROVED BY:	KBT	

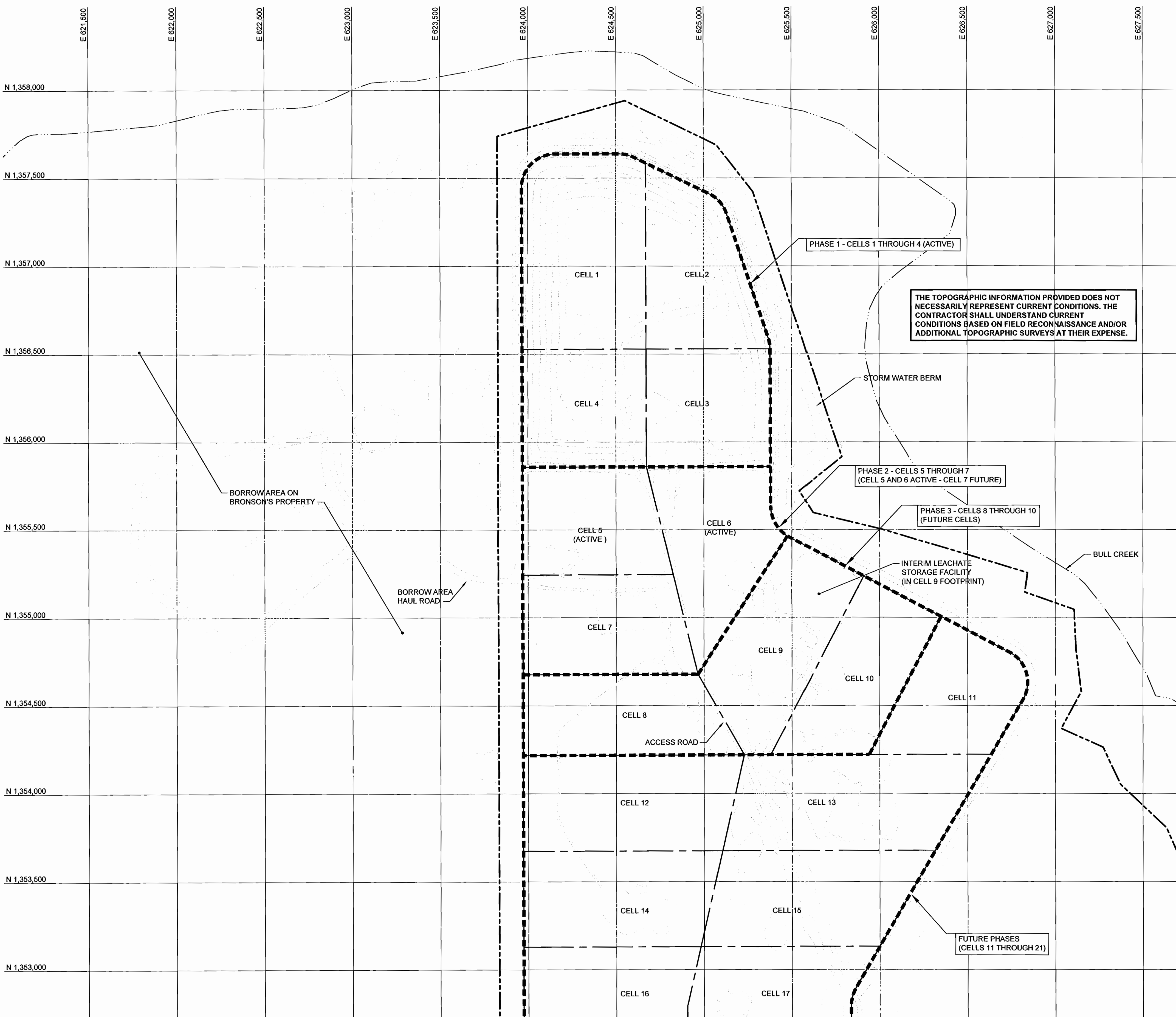
CONSTRUCTION DRAWINGS



LEGEND

- PROPERTY BOUNDARY
- - - - - APPROXIMATE LOCATION OF INTERMITTENT STREAM
- EXISTING GROUND ELEVATION (FEET)
(SEE NOTE 4)
- - - - - EXISTING FENCE LINE
- EXISTING TOPOGRAPHY SPOT ELEVATION (FEET)
- TREE LINE
- PHASE BOUNDARY
- CELL BOUNDARY

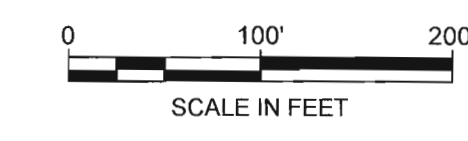
THE TOPOGRAPHIC INFORMATION PROVIDED DOES NOT NECESSARILY REPRESENT CURRENT CONDITIONS. THE CONTRACTOR SHALL UNDERSTAND CURRENT CONDITIONS BASED ON FIELD RECONNAISSANCE AND/OR ADDITIONAL TOPOGRAPHIC SURVEYS AT THEIR EXPENSE.



NOTES:

1. NORTHING AND EASTING COORDINATES SHOWN REPRESENT FLORIDA STATE PLANE EAST ZONE NORTH AMERICAN DATUM OF 1983 (NAD83).
2. THE ELEVATIONS SHOWN REPRESENT NATIONAL GEODETIC VERTICAL DATUM OF 1929 (NGVD29)(FEET).
3. THE PROPERTY BOUNDARY BASED ON A COMPOSITE BOUNDARY SURVEY PROVIDED BY JOHNSTON SURVEYING INC., KISSIMMEE FLORIDA, DATED AUGUST 12, 1999.
4. THE TOPOGRAPHIC INFORMATION SHOWN ON THIS DRAWING WAS PROVIDED BY BASE MAPPING, INC. BASED ON AN AERIAL PHOTOGRAPH TAKEN ON 17 MAY 2007.
5. THE TOPOGRAPHIC INFORMATION PROVIDED DOES NOT NECESSARILY REPRESENT CURRENT CONDITIONS. THE CONTRACTOR SHALL UNDERSTAND CURRENT CONDITIONS BASED ON FIELD RECONNAISSANCE AND/OR ADDITIONAL TOPOGRAPHIC SURVEYS AT THEIR EXPENSE.

REV	DATE	DESCRIPTION	DRN	APP
1200 RIVERPLACE BOULEVARD, SUITE 710 JACKSONVILLE, FLORIDA 32207 USA PHONE: 904.358.1818 - FAX: 904.396.1143 AUTHORIZATION CERTIFICATE NO. 4321		1501 OMNI WAY ST. CLOUD, FLORIDA 34773 TEL: 407-891-3720 FAX: 407-891-3730		
TITLE: TOPOGRAPHY MAP				
PROJECT: GAS COLLECTION AND CONTROL SYSTEM (GCCS) PHASE I DISPOSAL AREA - SEQUENCE 3A				
SITE: J.E.D. SOLID WASTE MANAGEMENT FACILITY				
THIS DRAWING MAY NOT BE ISSUED FOR PROJECT TENDER OR CONSTRUCTION, UNLESS SEALED.		DESIGN BY: WT DRAWN BY: JJA CHECKED BY: WT REVIEWED BY: KBT	DATE: April 2010 PROJECT NO.: FL1832.01 FILE: FL1452.03P020 DRAWING NO.:	APPROVED BY: KBT DATE:
 SIGNATURE DATE		KWASI BADU-TWENEBOAH LICENSE NO. 42460		
APPROVED BY: KBT			2 OF 8	



LEGEND

- PROPERTY BOUNDARY
- - - APPROXIMATE LOCATION OF INTERMITTENT STREAM
- 80 EXISTING GROUND ELEVATION (FEET) (SEE NOTE 4)
- X - EXISTING FENCE LINE
- ~ ~ ~ TREE LINE
- ⊕ GW-10 GAS EXTRACTION WELL IN CELLS 1 THRU 4 (TYP)
- ⊙ GROUNDWATER MONITORING WELL CLUSTER
- ⊗ LEACHATE TRANSMISSION MANHOLE
- ⊕ LEACHATE SUMP RISERS
- ⊕ LEACHATE CLEANOUT
- ⊙ EXISTING ELECTRIC POLES
- APPROXIMATE LIMITS OF ASBESTOS (SEE NOTE 6)
- ⊕ REDUCER
- ⊕ ISOLATION VALVE
- CONDENSATE DRAIN (SEE NOTE 12)
- CONDENSATE TRANSFER LINE
- LATERAL PIPE (SEE NOTE 7)
- HEADER PIPE
- INSIDE EDGE OF BOTTOM LINER AT ELEVATION 96'
- CENTER LINE OF INTERCELL BERM (SEE NOTE 10)
- ⊕ HEADER ACCESS RISER (SEE NOTE 11)
- ⊕ LATERAL PIPE SIZE
- SCREEN = EXISTING
- BLUE = TO BE CONSTRUCTED IN SEQUENCE 3A (CURRENT SEQUENCE)
- RED = TO BE CONSTRUCTED IN FUTURE SEQUENCE

GENERAL NOTES:

1. NORTHING AND EASTING COORDINATES SHOWN REPRESENT FLORIDA STATE PLANE EAST ZONE NORTH AMERICAN DATUM OF 1983 (NAD83)
2. THE ELEVATIONS SHOWN REPRESENT NATIONAL GEODETIC VERTICAL DATUM OF 1929 (NGVD29)(FEET).
3. THE PROPERTY BOUNDARY BASED ON A COMPOSITE BOUNDARY SURVEY PROVIDED BY JOHNSTON SURVEYING INC., KISSIMMEE FLORIDA, DATED AUGUST 12, 1999.
4. THE TOPOGRAPHIC INFORMATION SHOWN ON THIS DRAWING WAS PROVIDED BY BASE MAPPING, INC. BASED ON AN AERIAL PHOTOGRAPH TAKEN ON 17 MAY 2007.
5. THE TOPOGRAPHIC INFORMATION PROVIDED DOES NOT NECESSARILY REPRESENT CURRENT CONDITIONS. THE CONTRACTOR SHALL UNDERSTAND CURRENT CONDITIONS BASED ON FIELD RECONNAISSANCE AND/OR ADDITIONAL TOPOGRAPHIC SURVEYS AT THEIR EXPENSE.

GCCS NOTES:

6. APPROXIMATE LIMITS OF ASBESTOS SHOWN WERE BASED ON GRID AND GPS TRACKING BY SITE OPERATIONS. THE LIMITS OF ASBESTOS WERE ASSUMED TO BE WITHIN 20-FT RADIUS OF THE COORDINATES PROVIDED BY WSI. CONTRACTOR SHALL MARK THE INDICATED AREAS IN FIELD TO PREVENT INSTALLATION OF GAS EXTRACTION WELLS IN AREAS WHERE ASBESTOS WAS DISPOSED.
7. LATERAL PIPES SHALL BE 6" OR 8" DIA. SDR-17 HDPE PIPES AS SHOWN ON THIS SHEET.
8. GRADES INDICATED ON THIS SHEET WITHIN THE LANDFILL ARE TOP OF FINAL COVER SYSTEM GRADES.
9. A 15-FT WIDE BENCH WILL BE PROVIDED ON THE SIDE SLOPE OF THE LANDFILL EVERY 40 VERTICAL FEET. GAS EXTRACTION WELLS ADJACENT TO THESE BENCHES SHALL BE OFFSET FROM THE EDGE OF THE BENCH AS INDICATED IN DETAIL 11.
10. THE BOTTOM LINER SYSTEM IS AT A RELATIVELY HIGHER ELEVATION ADJACENT TO THE INTERCELL BERMS. CONTRACTOR SHALL PROVIDE ADDITIONAL ATTENTION DURING INSTALLATION OF GAS EXTRACTION WELLS ADJACENT TO THE INTERCELL BERMS.
11. A HEADER ACCESS RISER SHALL BE PROVIDED AT EACH HIGH POINT ALONG HEADER (I.E., AT EACH HPH) AS NOTED ON SHEET 8, WITH THE EXCEPTION OF HIGH POINTS THAT HAVE AN ISOLATION VALVE.
12. A CONDENSATE DRAIN SHALL BE PROVIDED AT EACH LOW POINT ALONG HEADER (I.E., AT EACH LPH) EXCEPT AT LPH-3 AS NOTED ON SHEET 7. SEE SHEET 5 FOR LOCATION OF LPH-3.

REV	DATE	DESCRIPTION	DRN	APP

Geosyntec
consultants
1200 RIVERPLACE BOULEVARD, SUITE 710
JACKSONVILLE, FLORIDA 32207 USA
PHONE: 904.858.1818 - FAX: 904.398.1143
AUTHORIZATION CERTIFICATE NO. 4321

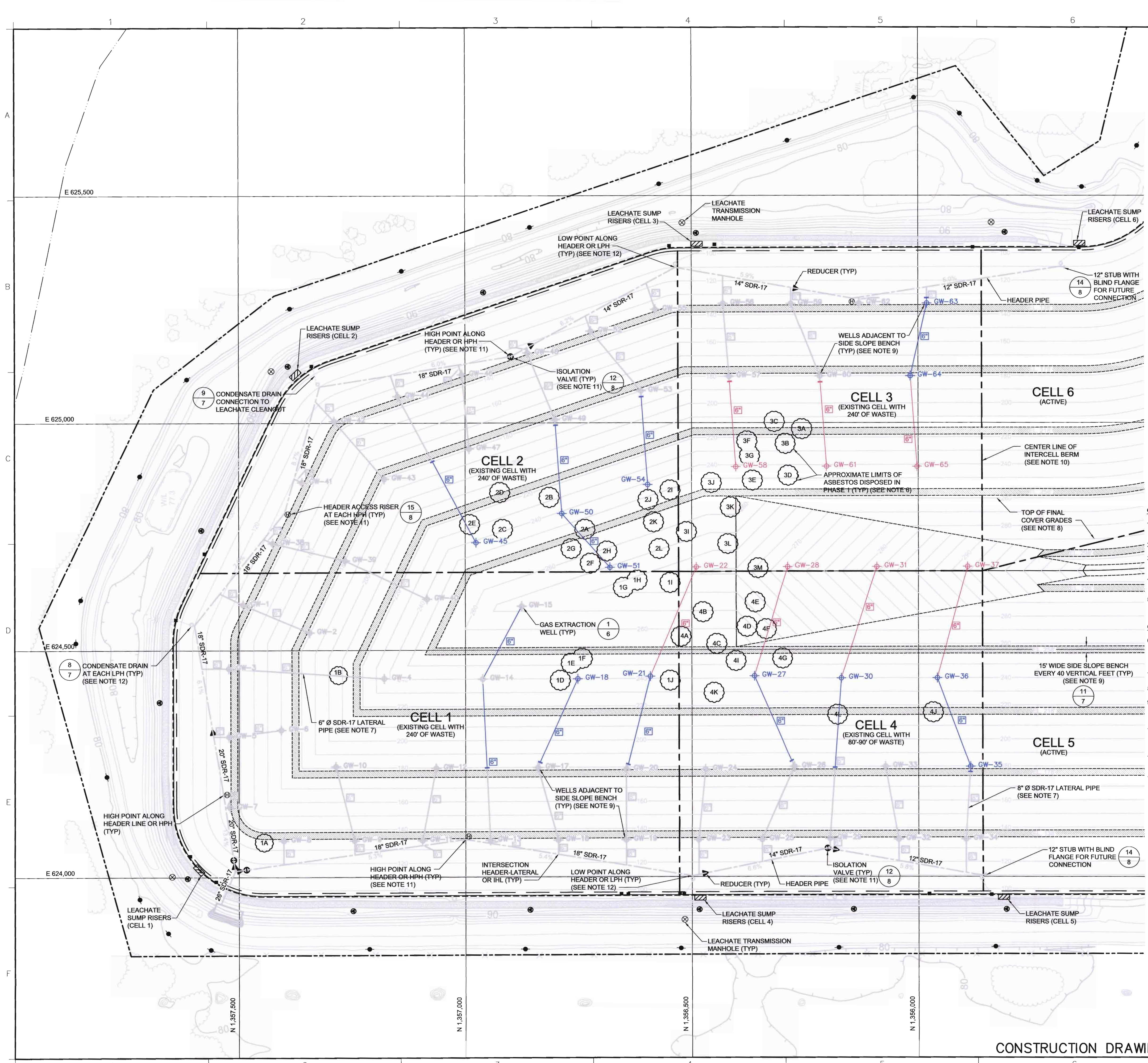
WSI
Waste Services, Inc.
1501 OMNI WAY
ST. CLOUD, FLORIDA 34773
TEL: 407-891-3720 FAX: 407-891-3730

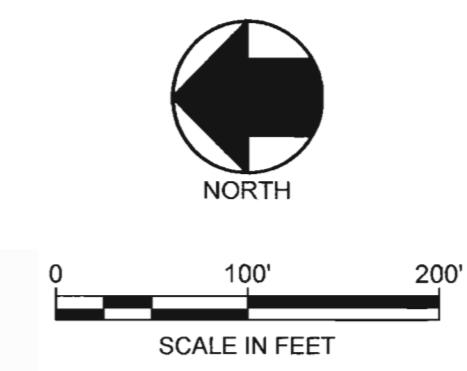
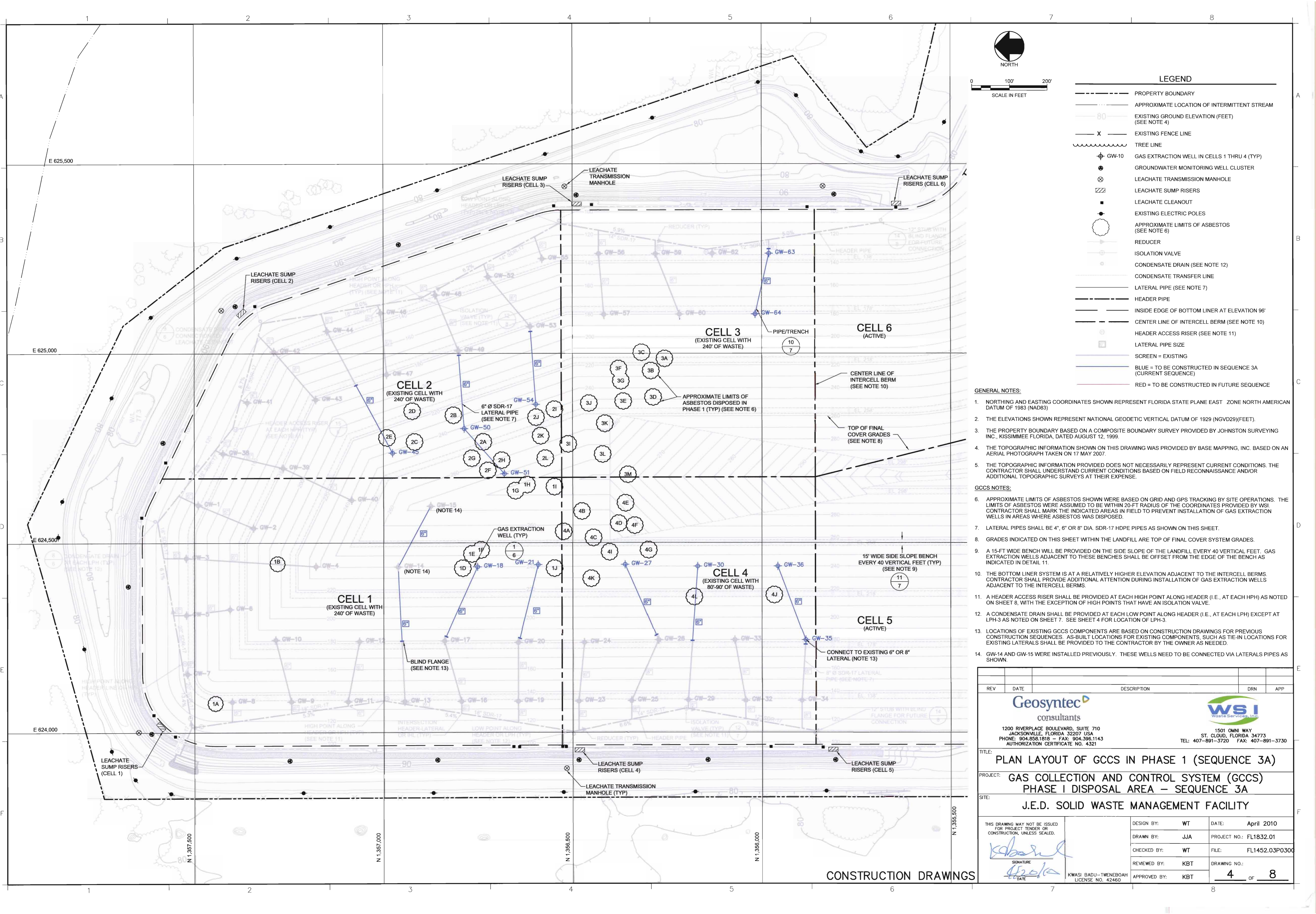
TITLE: **PLAN LAYOUT OF GCCS IN PHASE 1**
PROJECT: **GAS COLLECTION AND CONTROL SYSTEM (GCCS) PHASE I DISPOSAL AREA - SEQUENCE 3A**
SITE: **J.E.D. SOLID WASTE MANAGEMENT FACILITY**

THIS DRAWING MAY NOT BE ISSUED FOR PROJECT TENDER OR CONSTRUCTION, UNLESS SEALED.	DESIGN BY: WT	DATE: April 2010
	DRAWN BY: JJA	PROJECT NO.: FL1832.01
	CHECKED BY: WT	FILE: FL1452.03P030
	REVIEWED BY: KBT	DRAWING NO.: 3 OF 8
	APPROVED BY: KBT	

KWASI BADU-TWENBOAH
LICENSE NO. 42460

CONSTRUCTION DRAWINGS





LEGEND	
	PROPERTY BOUNDARY
	APPROXIMATE LOCATION OF INTERMITTENT STREAM
	EXISTING GROUND ELEVATION (FEET) (SEE NOTE 4)
	EXISTING FENCE LINE
	TREE LINE
	GW-10 GAS EXTRACTION WELL IN CELLS 1 THRU 4 (TYP)
	GROUNDWATER MONITORING WELL CLUSTER
	LEACHATE TRANSMISSION MANHOLE
	LEACHATE SUMP RISERS
	LEACHATE CLEANOUT
	EXISTING ELECTRIC POLES
	APPROXIMATE LIMITS OF ASBESTOS (SEE NOTE 6)
	REDUCER
	ISOLATION VALVE
	CONDENSATE DRAIN (SEE NOTE 12)
	CONDENSATE TRANSFER LINE
	LATERAL PIPE (SEE NOTE 7)
	HEADER PIPE
	INSIDE EDGE OF BOTTOM LINER AT ELEVATION 96'
	CENTER LINE OF INTERCELL BERM (SEE NOTE 10)
	HEADER ACCESS RISER (SEE NOTE 11)
	LATERAL PIPE SIZE
	SCREEN = EXISTING
	BLUE = TO BE CONSTRUCTED IN SEQUENCE 3A (CURRENT SEQUENCE)
	RED = TO BE CONSTRUCTED IN FUTURE SEQUENCE

- GENERAL NOTES:**
- NORTHING AND EASTING COORDINATES SHOWN REPRESENT FLORIDA STATE PLANE EAST ZONE NORTH AMERICAN DATUM OF 1983 (NAD83)
 - THE ELEVATIONS SHOWN REPRESENT NATIONAL GEODETIC VERTICAL DATUM OF 1929 (NGVD29)(FEET).
 - THE PROPERTY BOUNDARY BASED ON A COMPOSITE BOUNDARY SURVEY PROVIDED BY JOHNSTON SURVEYING INC., KISSIMEE FLORIDA, DATED AUGUST 12, 1999.
 - THE TOPOGRAPHIC INFORMATION SHOWN ON THIS DRAWING WAS PROVIDED BY BASE MAPPING, INC. BASED ON AN AERIAL PHOTOGRAPH TAKEN ON 17 MAY 2007.
 - THE TOPOGRAPHIC INFORMATION PROVIDED DOES NOT NECESSARILY REPRESENT CURRENT CONDITIONS. THE CONTRACTOR SHALL UNDERSTAND CURRENT CONDITIONS BASED ON FIELD RECONNAISSANCE AND/OR ADDITIONAL TOPOGRAPHIC SURVEYS AT THEIR EXPENSE.
- GCCS NOTES:**
- APPROXIMATE LIMITS OF ASBESTOS SHOWN WERE BASED ON GRID AND GPS TRACKING BY SITE OPERATIONS. THE LIMITS OF ASBESTOS WERE ASSUMED TO BE WITHIN 20-FT RADIUS OF THE COORDINATES PROVIDED BY WSI. CONTRACTOR SHALL MARK THE INDICATED AREAS IN FIELD TO PREVENT INSTALLATION OF GAS EXTRACTION WELLS IN AREAS WHERE ASBESTOS WAS DISPOSED.
 - LATERAL PIPES SHALL BE 4", 6" OR 8" DIA. SDR-17 HDPE PIPES AS SHOWN ON THIS SHEET.
 - GRADES INDICATED ON THIS SHEET WITHIN THE LANDFILL ARE TOP OF FINAL COVER SYSTEM GRADES.
 - A 15-FT WIDE BENCH WILL BE PROVIDED ON THE SIDE SLOPE OF THE LANDFILL EVERY 40 VERTICAL FEET. GAS EXTRACTION WELLS ADJACENT TO THESE BENCHES SHALL BE OFFSET FROM THE EDGE OF THE BENCH AS INDICATED IN DETAIL 11.
 - THE BOTTOM LINER SYSTEM IS AT A RELATIVELY HIGHER ELEVATION ADJACENT TO THE INTERCELL BERMS. CONTRACTOR SHALL PROVIDE ADDITIONAL ATTENTION DURING INSTALLATION OF GAS EXTRACTION WELLS ADJACENT TO THE INTERCELL BERMS.
 - A HEADER ACCESS RISER SHALL BE PROVIDED AT EACH HIGH POINT ALONG HEADER (I.E., AT EACH HPH) AS NOTED ON SHEET 8, WITH THE EXCEPTION OF HIGH POINTS THAT HAVE AN ISOLATION VALVE.
 - A CONDENSATE DRAIN SHALL BE PROVIDED AT EACH LOW POINT ALONG HEADER (I.E., AT EACH LPH) EXCEPT AT LPH-3 AS NOTED ON SHEET 7. SEE SHEET 4 FOR LOCATION OF LPH-3.
 - LOCATIONS OF EXISTING GCCS COMPONENTS ARE BASED ON CONSTRUCTION DRAWINGS FOR PREVIOUS CONSTRUCTION SEQUENCES. AS-BUILT LOCATIONS FOR EXISTING COMPONENTS, SUCH AS TIE-IN LOCATIONS FOR EXISTING LATERALS SHALL BE PROVIDED TO THE CONTRACTOR BY THE OWNER AS NEEDED.
 - GW-14 AND GW-15 WERE INSTALLED PREVIOUSLY. THESE WELLS NEED TO BE CONNECTED VIA LATERALS PIPES AS SHOWN.

REV	DATE	DESCRIPTION	DRN	APP

Geosyntec
consultants

1200 RIVERPLACE BOULEVARD, SUITE 710
JACKSONVILLE, FLORIDA 32207 USA
PHONE: 904.856.1818 - FAX: 904.396.1143
AUTHORIZATION CERTIFICATE NO. 4321

WSI
Waste Services, Inc.

1501 OMNI WAY
ST. CLOUD, FLORIDA 34773
TEL: 407-891-3720 FAX: 407-891-3730

TITLE: **PLAN LAYOUT OF GCCS IN PHASE 1 (SEQUENCE 3A)**

PROJECT: **GAS COLLECTION AND CONTROL SYSTEM (GCCS) PHASE I DISPOSAL AREA - SEQUENCE 3A**

SITE: **J.E.D. SOLID WASTE MANAGEMENT FACILITY**

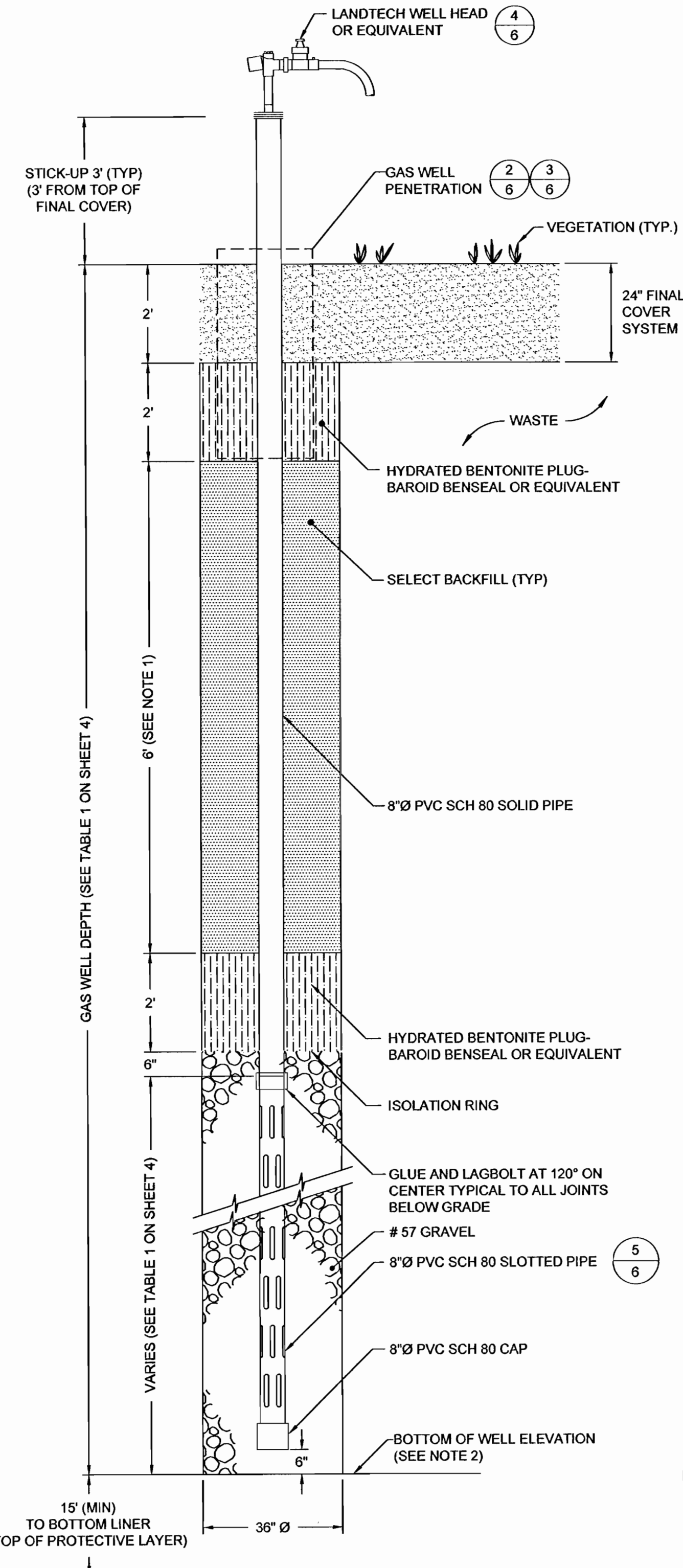
DESIGN BY: WT	DATE: April 2010
DRAWN BY: JJA	PROJECT NO.: FL1832.01
CHECKED BY: WT	FILE: FL1452.03P0300
REVIEWED BY: KBT	DRAWING NO.: 4 OF 8
APPROVED BY: KBT	

THIS DRAWING MAY NOT BE ISSUED FOR PROJECT TENDER OR CONSTRUCTION, UNLESS SEALED.

SIGNATURE: *[Signature]* DATE: *[Date]*

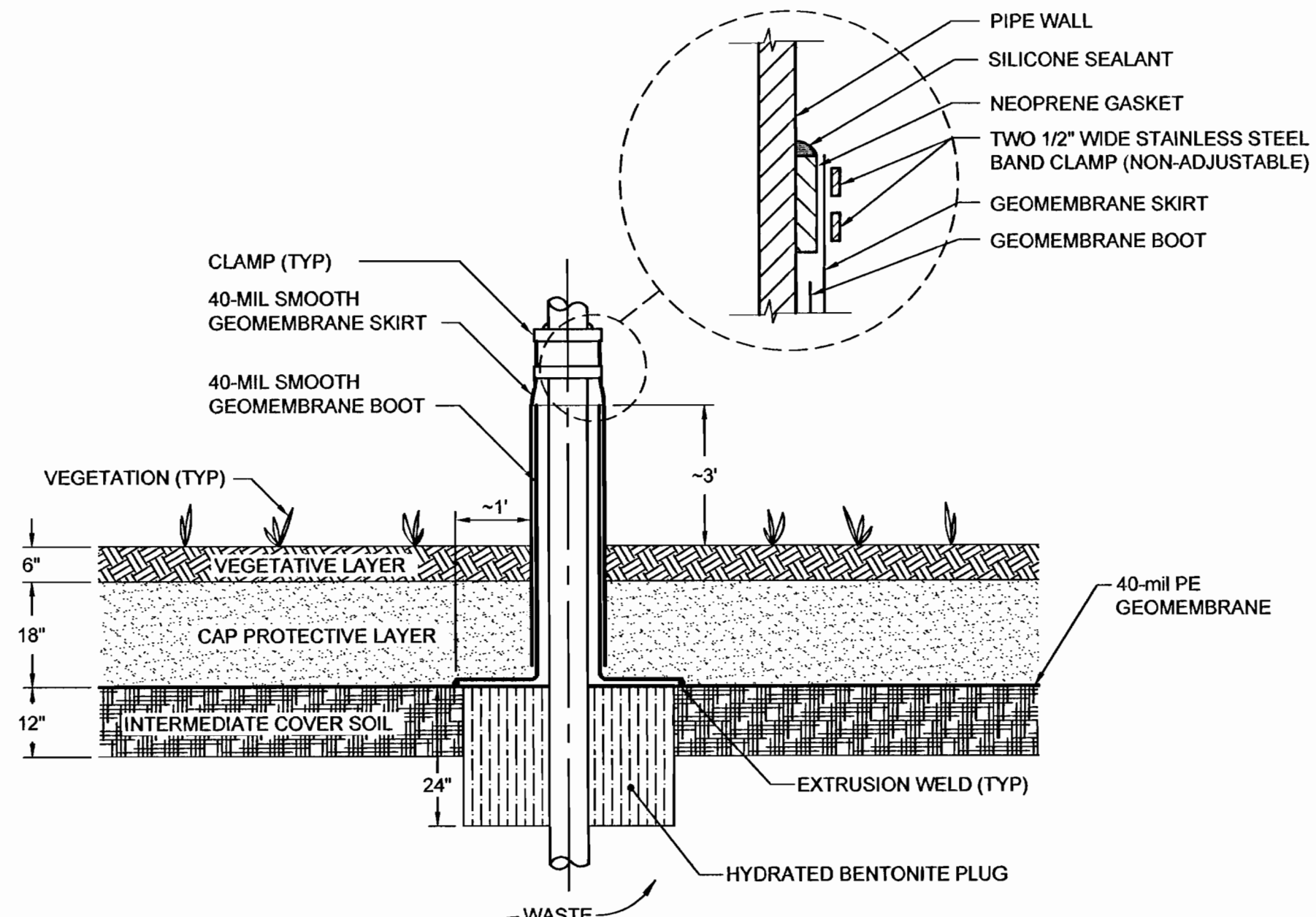
KWASI BADU-TWENEBOAH LICENSE NO. 42460

CONSTRUCTION DRAWINGS

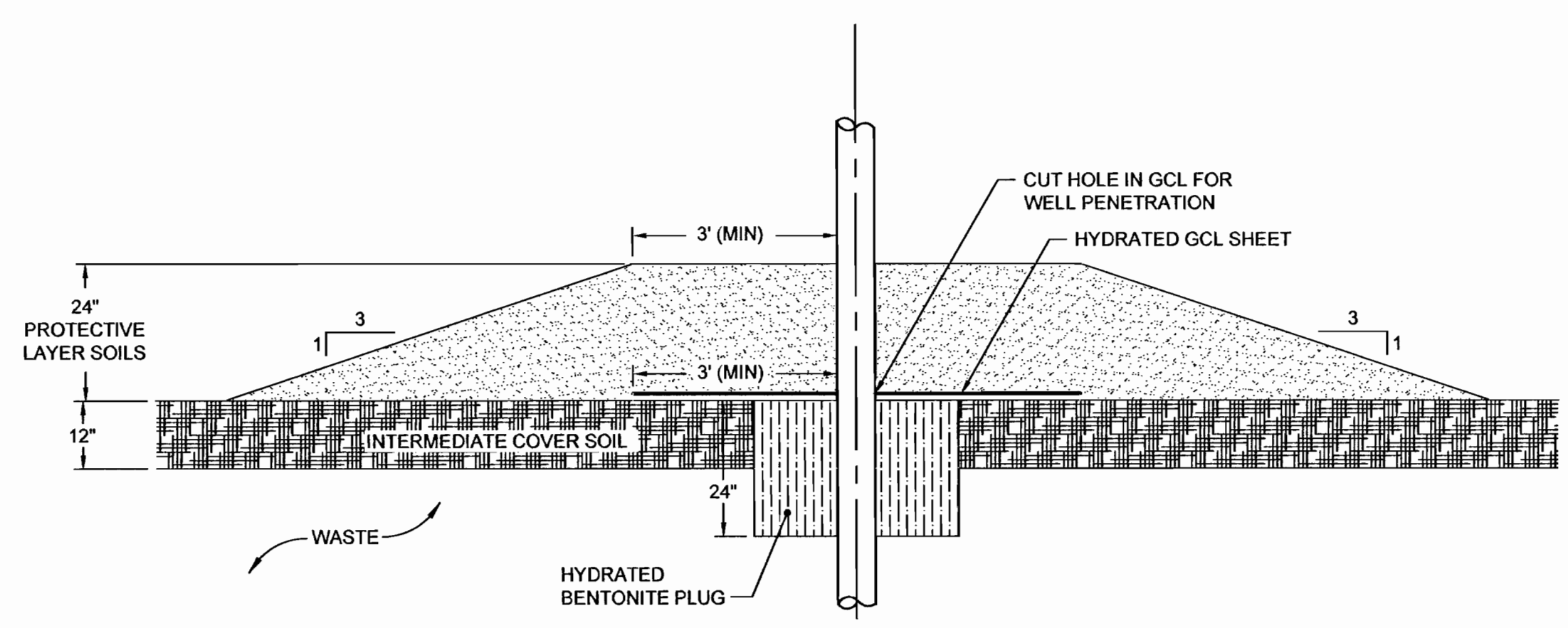


1 **3** **DETAIL**
GAS EXTRACTION WELL
SCALE: N.T.S.
XREF: FL1452.03P021

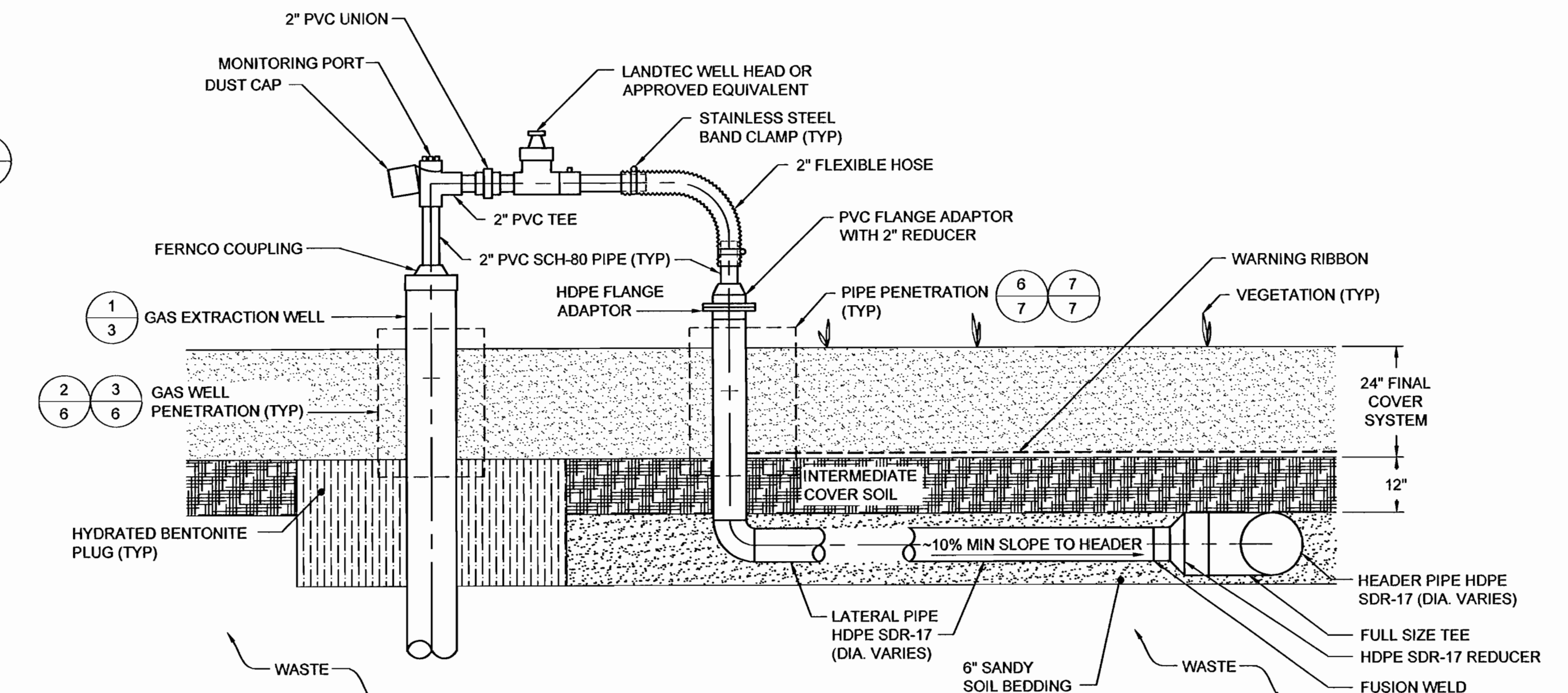
- NOTES:**
- THE LENGTH OF SOLID PIPE EXTENDING BELOW THE GEOMEMBRANE SHALL BE NO LESS THAN 10 FEET.
 - BOTTOM ELEVATION OF ALL GAS EXTRACTION WELLS SHALL BE MINIMUM 15' FROM THE BOTTOM LINER (TOP OF PROTECTIVE COVER LAYER).



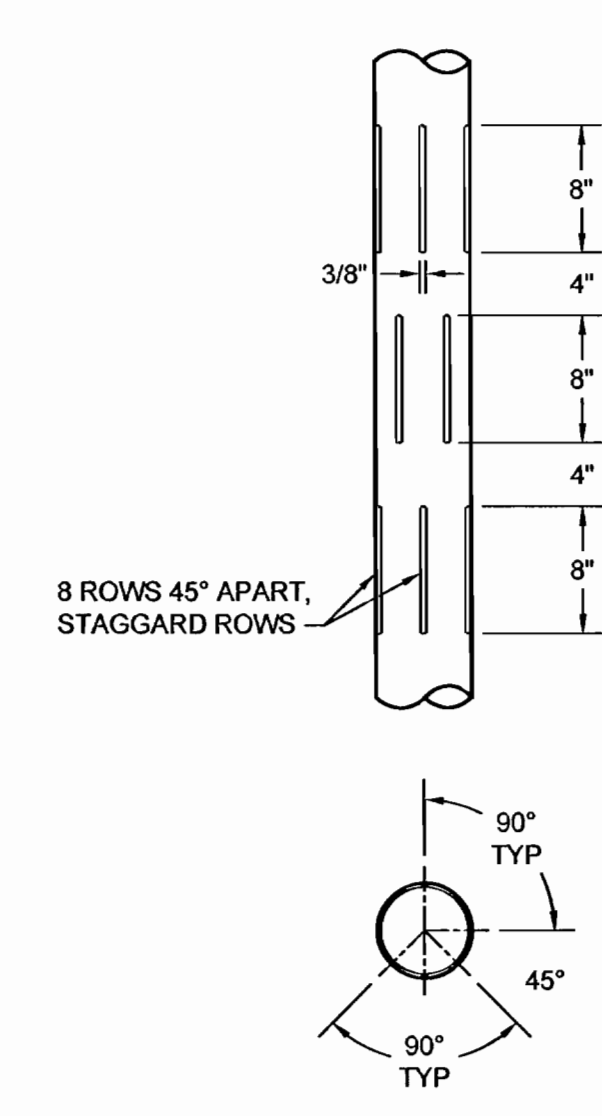
2 **6** **DETAIL**
GAS WELL FINAL COVER PENETRATION
SCALE: N.T.S.
XREF: FL1452.03P022



3 **6** **DETAIL**
GAS WELL SOIL COVER PENETRATION (PRE-FINAL COVER)
SCALE: N.T.S.
XREF: FL1452.03P023



4 **6** **DETAIL**
WELLHEAD TO LATERAL
SCALE: N.T.S.
XREF: FL1452.03P024.DWG



5 **6** **DETAIL**
PIPE SLOTS
SCALE: N.T.S.
XREF: 1452.03P020

- NOTE:**
- ALL GAS SYSTEM COMPONENTS SHALL BE CONSTRUCTED IN ACCORDANCE WITH DETAILS SHOWN HEREIN AND TECHNICAL SPECIFICATIONS. CONTRACTOR SHALL REFER TO BOTH THESE DOCUMENTS.
 - SCREENED DETAILS ARE PROVIDED FOR INFORMATION PURPOSES ONLY AND ARE NOT INTENDED FOR CONSTRUCTION DURING THIS SEQUENCE.

REV	DATE	DESCRIPTION	DRN	APP
Geosyntec consultants 1200 RIVERPLACE BOULEVARD, SUITE 710 JACKSONVILLE, FLORIDA 32207 USA PHONE: 904.858.1818 - FAX: 904.396.1143 AUTHORIZATION CERTIFICATE NO. 4321				
WSI Waste Services, Inc. 1501 OMNI WAY ST. CLOUD, FLORIDA 34773 TEL: 407-891-3720 FAX: 407-891-3730				
TITLE: GAS EXTRACTION WELLS DETAILS				
PROJECT: GAS COLLECTION AND CONTROL SYSTEM (GCCS) PHASE I DISPOSAL AREA - SEQUENCE 3A				
SITE: J.E.D. SOLID WASTE MANAGEMENT FACILITY				
THIS DRAWING MAY NOT BE ISSUED FOR PROJECT TENDER OR CONSTRUCTION, UNLESS SEALED.		DESIGN BY: WT DRAWN BY: JJA CHECKED BY: WT REVIEWED BY: KBT APPROVED BY: KBT	DATE: April 2010 PROJECT NO.: FL1832.01 FILE: FL1452.03P050 DRAWING NO.: 6 OF 8	SIGNATURE: <i>[Signature]</i> DATE: <i>[Date]</i> KWASI BADU-TWENEBDAH LICENSE NO. 42460

6
6 DETAIL
PIPE SOIL COVER PENETRATION
(PRE-FINAL COVER)
SCALE: N.T.S.
XREF: FL1452.03040

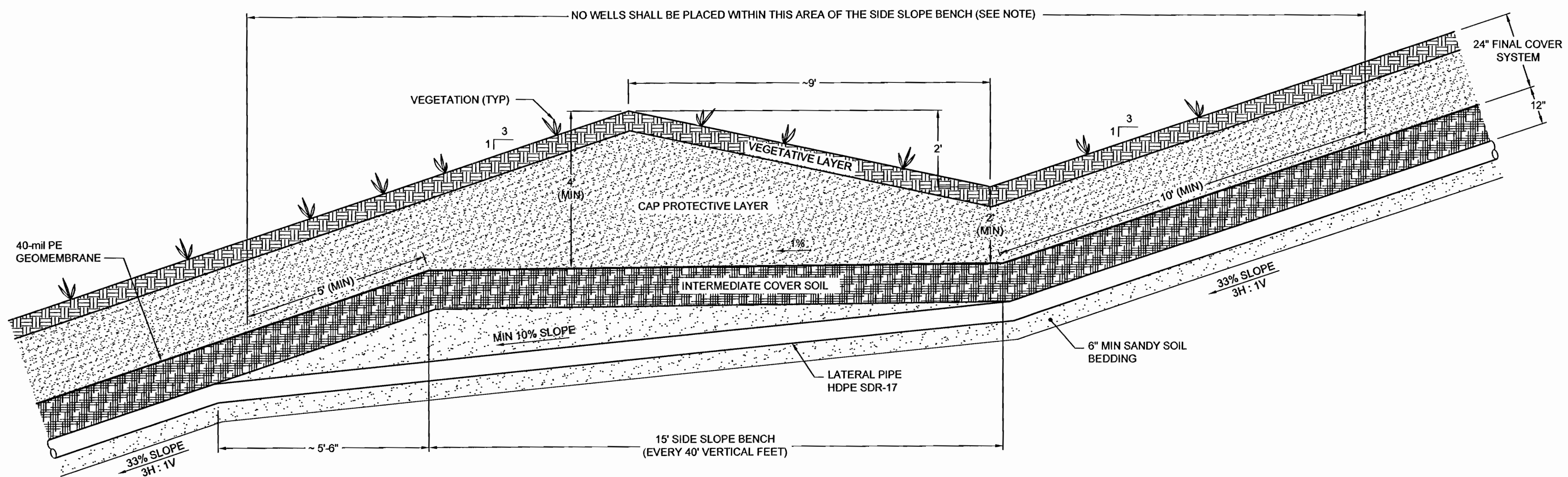
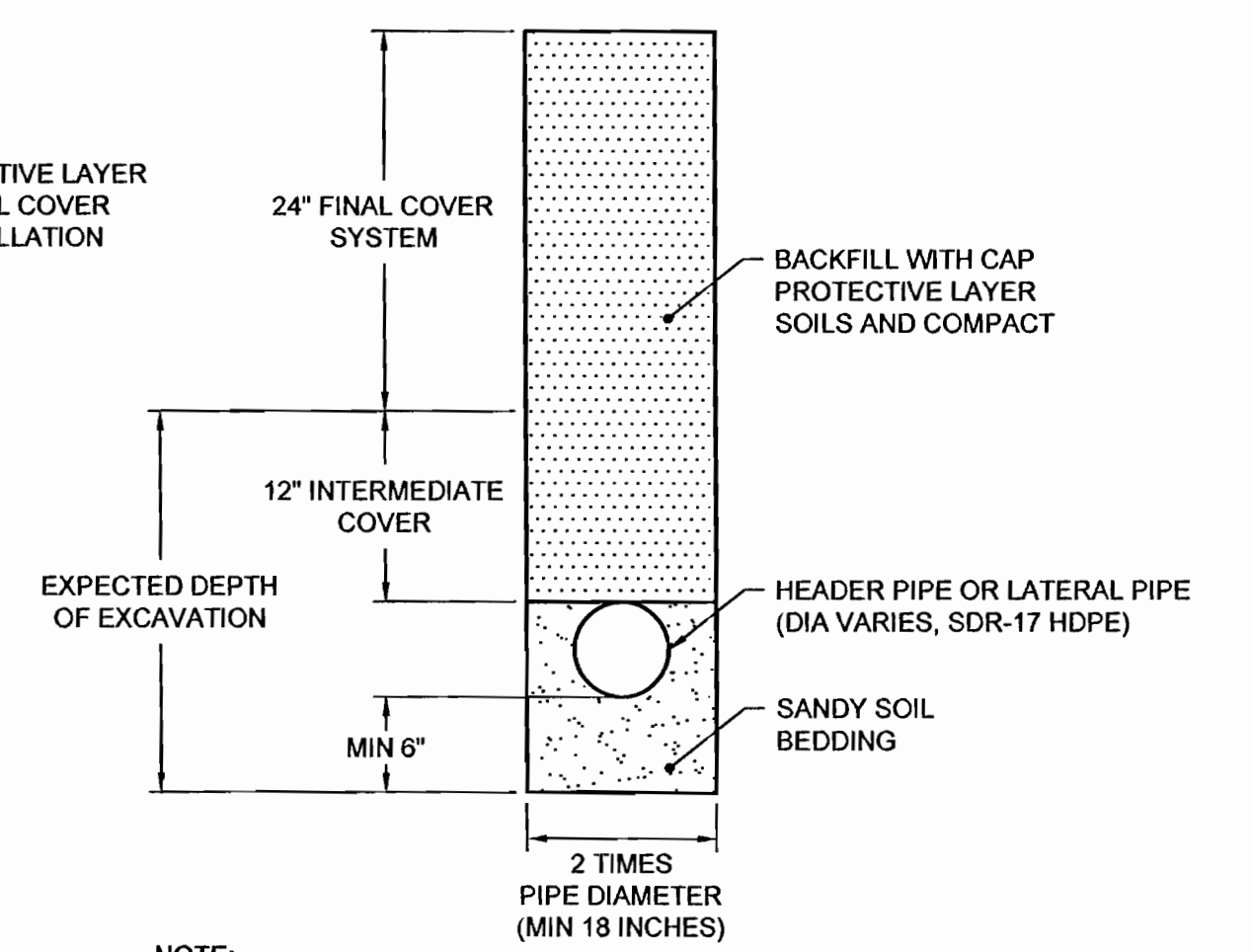
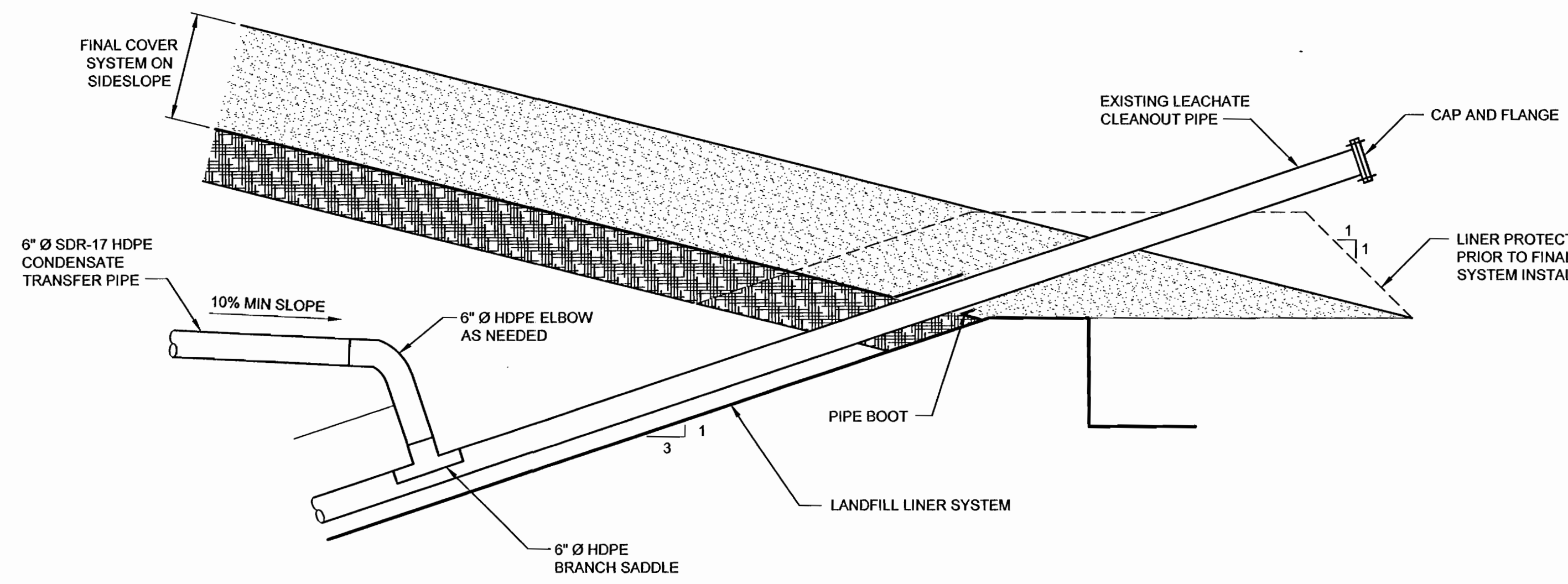
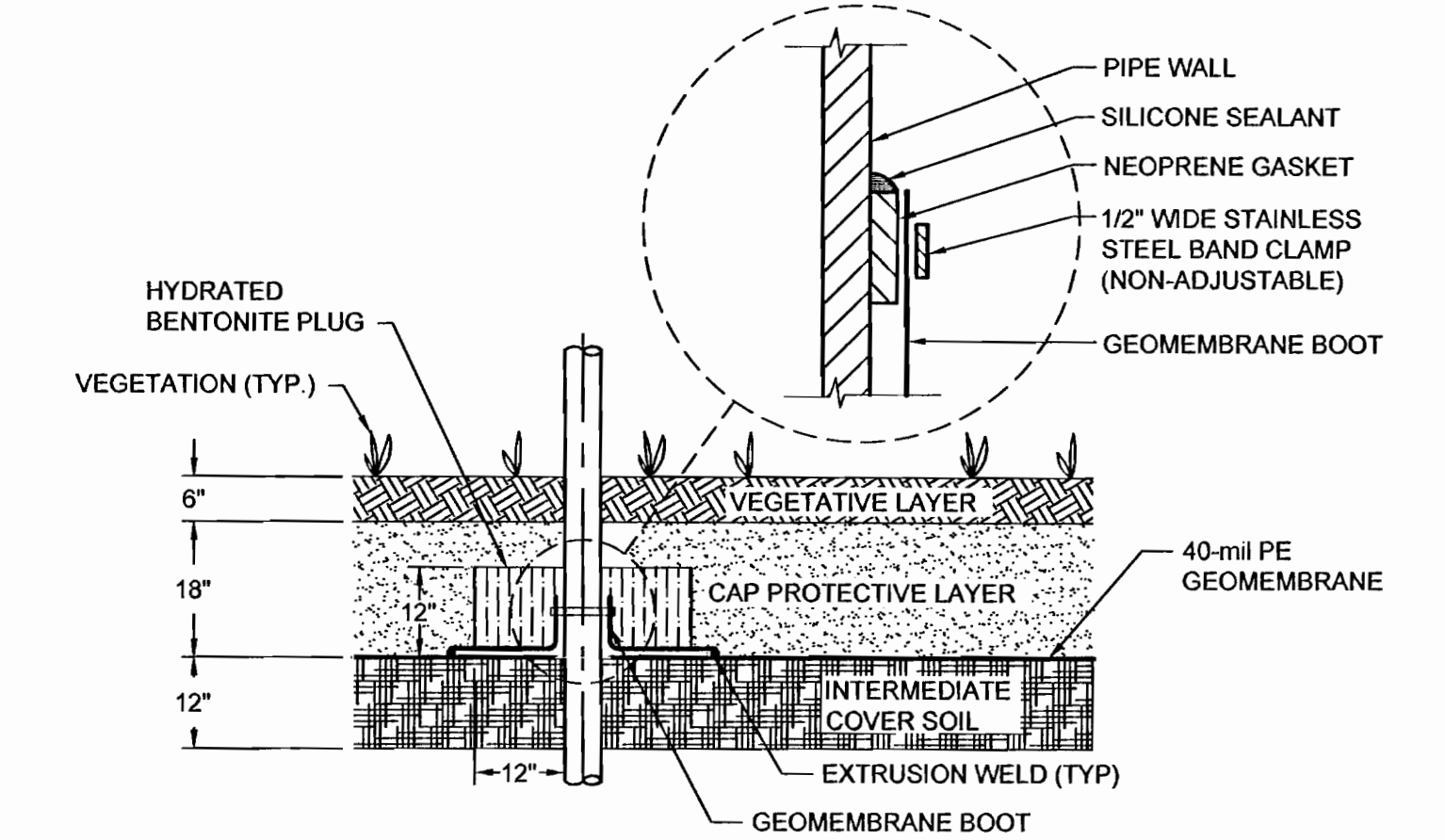
7
6 DETAIL
PIPE FINAL COVER PENETRATION
SCALE: N.T.S.
XREF: FL1452.03023

9
3 DETAIL
CONDENSATE DRAIN CONNECTION
TO LEACHATE CLEANOUT
SCALE: N.T.S.
XREF: FL1452.03007

8
3 DETAIL
CONDENSATE DRAIN (NOTE 2)
SCALE: N.T.S.
XREF: FL1452.03036

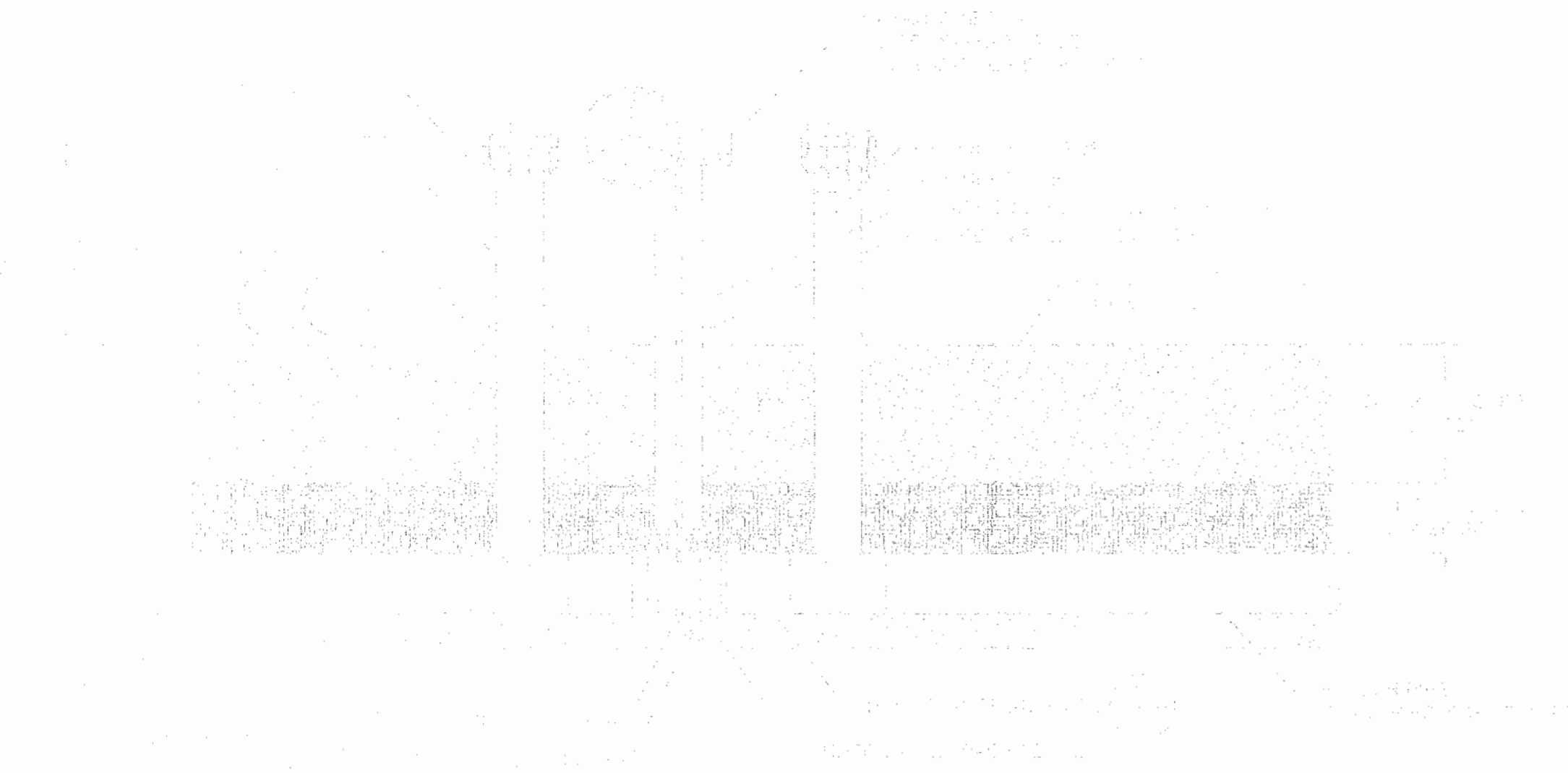
10
4 DETAIL
PIPE TRENCH
SCALE: N.T.S.
XREF: FL1452.03038

11
3 DETAIL
LATERAL PIPE TRENCH AT BENCH CROSSING
SCALE: N.T.S.
XREF: FL1452.03054

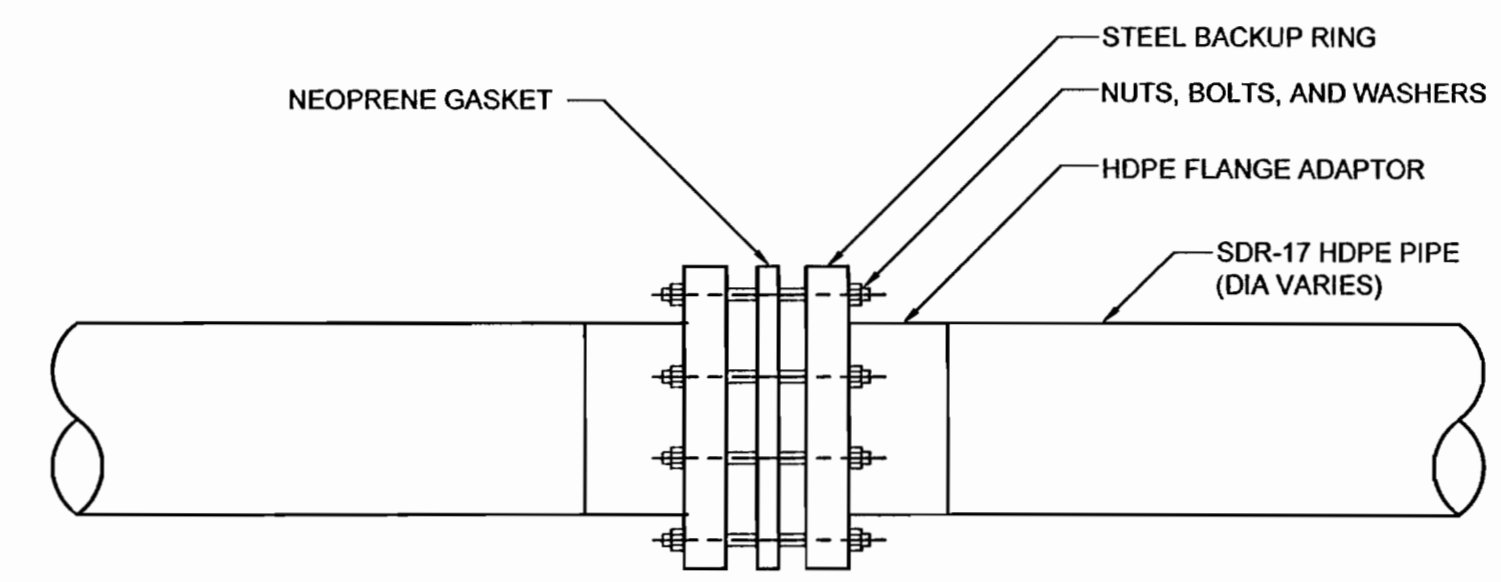


- NOTE:**
- ALL GAS SYSTEM COMPONENTS SHALL BE CONSTRUCTED IN ACCORDANCE WITH DETAILS SHOWN HEREIN AND TECHNICAL SPECIFICATIONS. CONTRACTOR SHALL REFER TO BOTH THESE DOCUMENTS.
 - SCREENED DETAILS ARE PROVIDED FOR INFORMATION PURPOSES ONLY AND ARE NOT INTENDED FOR CONSTRUCTION DURING THIS SEQUENCE.

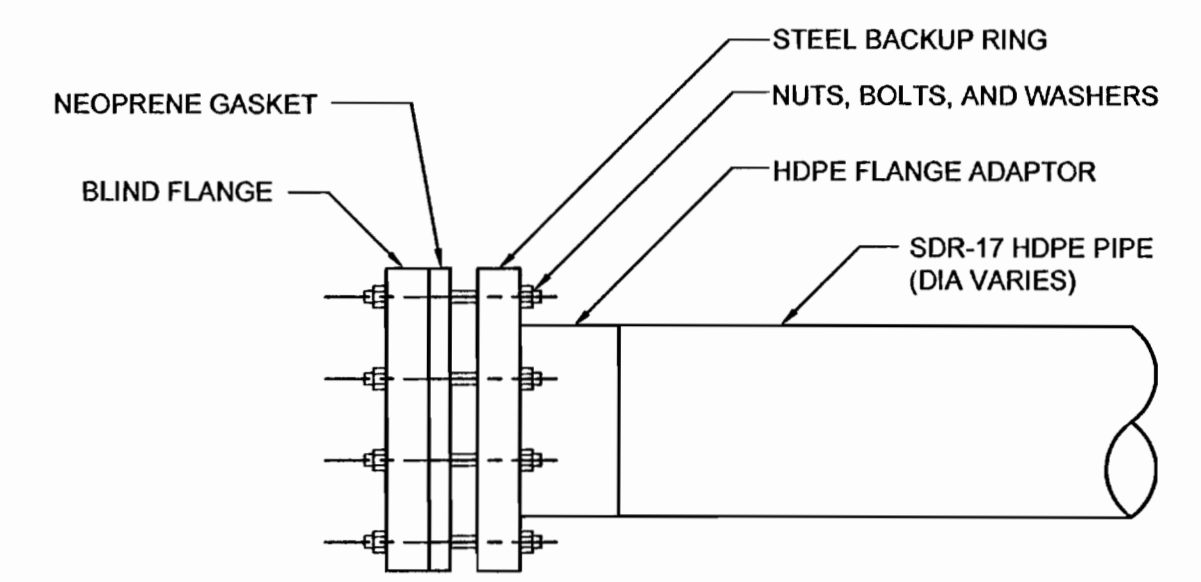
REV	DATE	DESCRIPTION	DRN	APP
<p>Geosyntec consultants</p> <p>1200 RIVERPLACE BOULEVARD, SUITE 710 JACKSONVILLE, FLORIDA 32207 USA PHONE: 904.858.1818 -- FAX: 904.396.1143 AUTHORIZATION CERTIFICATE NO. 4321</p>				
<p>WSI Waste Services, Inc.</p> <p>1501 OMNI WAY ST. CLOUD, FLORIDA 34773 TEL: 407-891-3720 FAX: 407-891-3730</p>				
<p>TITLE: GCCS DETAILS I</p>				
<p>PROJECT: GAS COLLECTION AND CONTROL SYSTEM (GCCS) PHASE I DISPOSAL AREA - SEQUENCE 3A</p>				
<p>SITE: J.E.D. SOLID WASTE MANAGEMENT FACILITY</p>				
<p>THIS DRAWING MAY NOT BE ISSUED FOR PROJECT TENDER OR CONSTRUCTION, UNLESS SEALED.</p> <p><i>[Signature]</i> SIGNATURE DATE</p>		<p>DESIGN BY: WT</p> <p>DRAWN BY: JJA</p> <p>CHECKED BY: WT</p> <p>REVIEWED BY: KBT</p> <p>APPROVED BY: KBT</p>	<p>DATE: April 2010</p> <p>PROJECT NO.: FL1832.01</p> <p>FILE: FL1452.03P060</p> <p>DRAWING NO.: 7 OF 8</p>	<p>KWASI BADU-TWENEBOAH LICENSE NO. 42460</p>



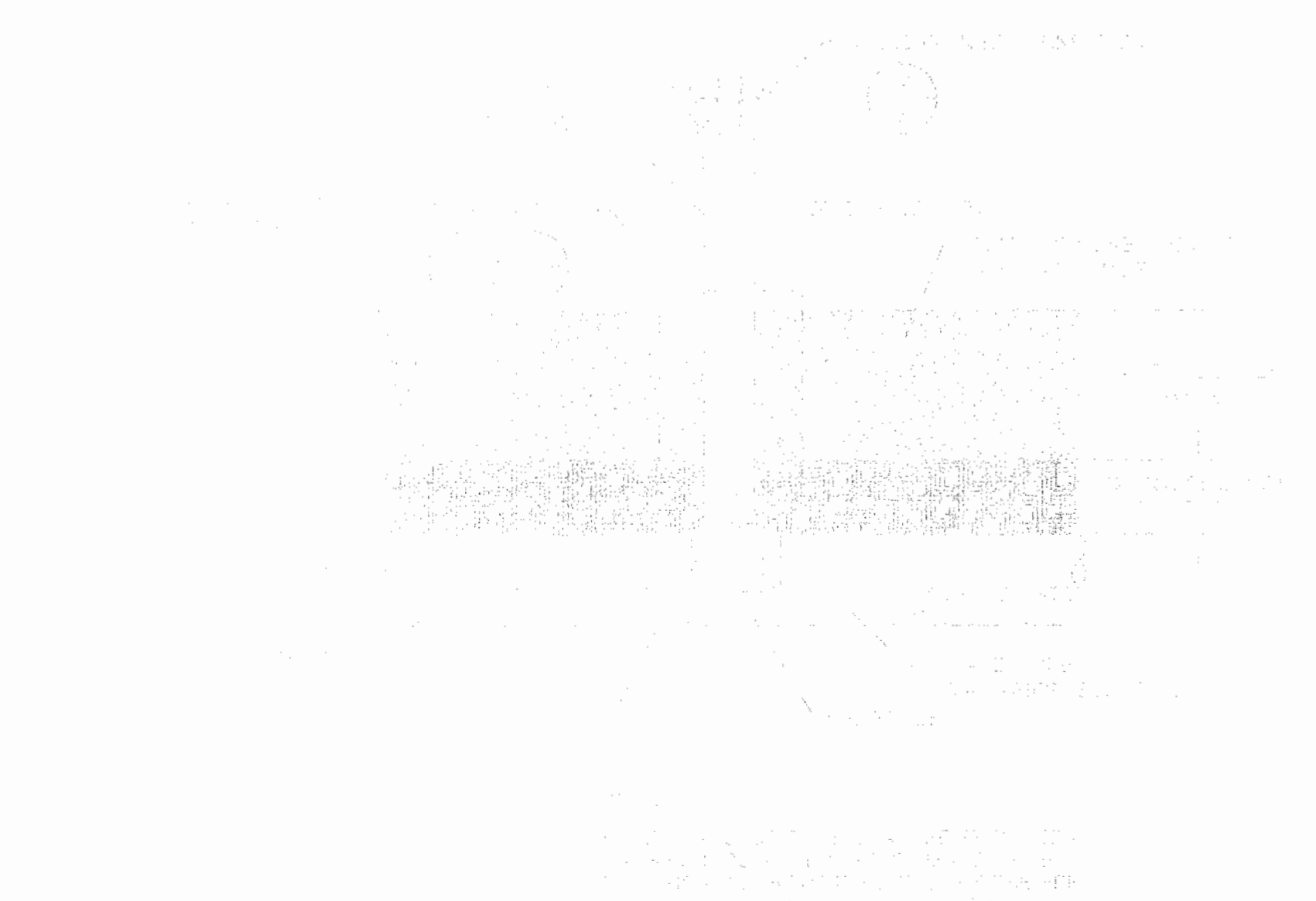
12
-
DETAIL
ISOLATION VALVE (NOTE 2)
SCALE: N.T.S.
XREF: FL1452.03X025



13
8
DETAIL
FLANGE CONNECTION (TYP.)
SCALE: N.T.S.
XREF: FL1452.03X026



14
3
DETAIL
BLIND FLANGE (TYP)
SCALE: N.T.S.
XREF: FL1452.03X027



15
3
DETAIL
HEADER ACCESS RISER (NOTE 2)
SCALE: N.T.S.
XREF: FL1452.03X028



16
-
DETAIL
ANTI-SEEP COLLAR (NOTE 2)
SCALE: N.T.S.
XREF: FL1452.03X030

NOTE:

1. ALL GAS SYSTEM COMPONENTS SHALL BE CONSTRUCTED IN ACCORDANCE WITH DETAILS SHOWN HEREIN AND TECHNICAL SPECIFICATIONS. CONTRACTOR SHALL REFER TO BOTH OF THESE DOCUMENTS.
2. SCREENED DETAILS ARE PROVIDED FOR INFORMATION PURPOSES ONLY AND ARE NOT INTENDED FOR CONSTRUCTION DURING THIS SEQUENCE.

REV	DATE	DESCRIPTION	DRN	APP
<p>Geosyntec consultants</p> <p>1200 RIVERPLACE BOULEVARD, SUITE 710 JACKSONVILLE, FLORIDA 32207 USA PHONE: 904.858.1818 - FAX: 904.396.1143 AUTHORIZATION CERTIFICATE NO. 4321</p>				
<p>WSI Waste Services, Inc.</p> <p>1501 OMNI WAY ST. CLOUD, FLORIDA 34773 TEL: 407-891-3720 FAX: 407-891-3730</p>				
<p>TITLE: GCCS DETAILS II</p>				
<p>PROJECT: GAS COLLECTION AND CONTROL SYSTEM (GCCS) PHASE I DISPOSAL AREA - SEQUENCE 3A</p>				
<p>SITE: J.E.D. SOLID WASTE MANAGEMENT FACILITY</p>				
<p>THIS DRAWING MAY NOT BE ISSUED FOR PROJECT TENDER OR CONSTRUCTION, UNLESS SEALED.</p> <p><i>[Signature]</i> SIGNATURE DATE</p>		<p>DESIGN BY: WT</p> <p>DRAWN BY: JJA</p> <p>CHECKED BY: WT</p> <p>REVIEWED BY: KBT</p> <p>APPROVED BY: KBT</p>	<p>DATE: April 2010</p> <p>PROJECT NO.: FL1832.01</p> <p>FILE: FL1452.03P070</p> <p>DRAWING NO.: 8 OF 8</p>	<p>KWASI BADU-TWENEBOAH LICENSE NO. 42460</p>