



RECEIVED
NOV 01 2010
DEF Central Dist

Environmental Planning Specialists, Inc.
1936 Bruce B. Downs Blvd. No. 328
Wesley Chapel, Florida 33543
Telephone: (813) 388-1026
www.envplanning.com

October 28, 2010

Mr. F. Thomas Lubozynski, P.E.
Solid and Hazardous Waste Program
Florida Department of Environmental Protection (FDEP), Central District
3319 Maguire Boulevard, Suite 232
Orlando, Florida 32803-3767

Re: Revisions to Cell 7 Certification Report and Financial Assurance Minor Modification Application
J.E.D. Solid Waste Management Facility, Osceola County, Florida
FDEP Permit No's. SC49-0199726-004 & SO49-0199726-005

Dear Mr. Lubozynski:

Submitted herewith are two (2) copies of the replacement pages for the Cell 7 Certification Report and the Minor Modification Application for Cell 7 Financial Assurance. The Cell 7 Certification Report and Minor Modification Application were originally submitted to the FDEP on October 4, 2010. The revisions to the documents are based on comments provided by Mr. Sandeep Janwadkar (FDEP) and Mr. George Cheryan (FDEP) at the site inspection meeting held at the JED Facility on Wednesday, October 20, 2010. In addition to the two (2) hard copies of the replacement pages provided, I have also included new compact disks (CDs) containing a revised PDF of Appendices E through U and a revised PDF of the entire report. Please discard the CDs submitted with the original documents.

If you have any questions or need additional information, please do not hesitate to contact the undersigned at (813) 388-1026 or Mike Kaiser with WSI at (904) 673-0446.

Sincerely,

Kirk Wills
Senior Engineer

Attachments

Copy: Mike Kaiser, WSI

RECEIVED
NOV 01 2010
DEP Central Dist.

Prepared for:



Omni Waste of Osceola County, LLC

1501 Omni Way
St. Cloud, Florida 34773

**MINOR MODIFICATION APPLICATION
FOR PHASED FINANCIAL ASSURANCE
CELL 7 CONSTRUCTION**

**J.E.D. SOLID WASTE MANAGEMENT
FACILITY**

Prepared by:



Environmental Planning Specialists, Inc.
1936 Bruce B. Downs Blvd. No. 328
Wesley Chapel, Florida 33543
(813) 388-1026

WSI-JED SWMF (2): Task 05- Cell 7 Financial Assurance Minor Mod

**Revision 1
October 2010**

Prepared for:



Omni Waste of Osceola County, LLC

1501 Omni Way
St. Cloud, Florida 34773

**MINOR MODIFICATION APPLICATION
FOR PHASED FINANCIAL ASSURANCE
CELL 7 CONSTRUCTION**

**J.E.D. SOLID WASTE MANAGEMENT
FACILITY**

Prepared by:



Environmental Planning Specialists, Inc.
1936 Bruce B. Downs Blvd. No. 328
Wesley Chapel, Florida 33543
(813) 388-1026

WSI-JED SWMF (2): Task 05- Cell 7 Financial Assurance Minor Mod

**Revision 1
October 2010**

TABLE OF CONTENTS

Transmittal Letter to Florida Department of Environmental Protection

SECTION 1	INTRODUCTION
SECTION 2	PROJECT BACKGROUND
SECTION 3	FINANCIAL ASSURANCE COST ESTIMATE FOR CELL 7

ATTACHMENTS

Attachment 1	FDEP Form 62-701.900(1)
Attachment 2	FDEP Financial Assurance Form 62-701.900(28) With Notes and Calculations
Attachment 2-1	Bid Documents for the Phase 1 Partial Closure and Phase 1, Sequence 1-3 GCCS Construction.

**MINOR MODIFICATION APPLICATION
FOR CELL 7 FINANCIAL ASSURANCE
J.E.D. SOLID WASTE MANAGEMENT FACILITY**

1. INTRODUCTION

Environmental Planning Specialists, Inc. (EPS) has prepared this minor modification application to provide the closure and long-term care cost estimates for Cell 7 at the J.E.D. Solid Waste Management (JED) facility, located in Osceola County, Florida. The closure and long-term care cost estimates for the JED facility are being updated to include Cell 7, which is the third cell to be constructed as part of Phase 2 development. Phase 2 development at the JED facility consists of three cells – Cells 5 through 7. To date, Cells 1 through 6 have been constructed and are currently in use. The construction of Cell 7 was substantially completed on August 27, 2010 and is expected to begin accepting waste in the first quarter of 2011.

The JED facility is owned and operated by Omni Waste of Osceola County, LLC (Omni), which is a wholly owned subsidiary of Waste Services, Inc. (WSI). This minor modification application is being submitted to the Florida Department of Environmental Protection (FDEP), Central District on behalf of Omni.

This minor modification application is being submitted to comply with Specific Condition No. 66 of Appendix B (Revised April 9, 2008) listed for Permit No's. SC49-0199726-004 and SO49-0199726-005 in accordance with Modification No. SC49-0199726-008 "Phased Financial Assurance for Cells 7-10". The vertical expansion permit was issued by FDEP on April 4, 2008 to authorize the vertical expansion of the JED facility under Modification No's. SC49-0199726-006 and SO49-0199726-007. Attachment 1 includes the FDEP Form 62-701.900(1), Application for a Permit to Construct, Operate, Modify or Close a Solid Waste Management Facility, which has been completed for this minor modification for phased financial assurance for Cell 7.

2. PROJECT BACKGROUND

The current 5-year construction and operation permit authorizes the development of Phases 1 through 3 of the JED facility. Phase 1 consists of four cells, Cells 1 through 4, and has a

footprint of approximately 53 acres. Phase 2 consists of three cells, Cells 5 through 7, and has a footprint of approximately 36 acres. Phase 3 consists of three cells, Cells 8 through 10, and has a footprint of approximately 37 acres. The combined footprint of Phases 1 through 3 is approximately 126 acres. To date, Cells 1 through 7 have been constructed at the JED facility consisting of approximately 89 total acres.

Since each of the remaining cells (Cells 8 through 10) in Phase 3 will be constructed at different times, the financial assurance requirement for each new cell will be provided to FDEP as a minor modification with the submittal of each Cell certification report. Annual financial assurance updates will consider only the cells containing waste during the period covered by the financial assurance. The current financial assurance, approved by the FDEP on February 23, 2010 for the JED facility includes the closure cost for the remaining Phase 1, Cells 1-4 areas (not closed as part of the Phase 1 partial closure completed in 2009), Cells 5 and 6, and the long-term care costs for Cells 1 through 6. The current approved and financially assured closure costs are \$4,763,710.72 and long-term care costs are \$6,852,232.06.

3. FINANCIAL ASSURANCE COST ESTIMATE FOR CELL 7

This minor modification application is being submitted to update the financial assurance cost estimate for the JED facility to include Cell 7. The closure and long-term care costs were estimated for Cell 7 using the FDEP approved unit rate costs from the financial assurance cost estimate revision associated with the partial closure project completed and approved in December 2009. The December 2009 revision included bids obtained for the construction of the partial closure project completed in the third quarter of 2009 and the Phase 1, Sequence 1 and 2 Gas Collection and Control System (GCCS) construction completed in December 2008 and March 2009, respectively. The unit rate costs used in calculation of the closure and long-term care costs for Cell 7 have been inflated by 2% to account for the 2010 inflation adjustment issued by the FDEP on January 5, 2010. FDEP Form 62-701.900(28), Closure Cost Estimating Form for Solid Waste Facilities, with notes and calculations is included as Attachment 2. It is noted that the financial assurance cost estimate presented in Attachment 2 includes the closure and long-term care costs for Cell 7 only.

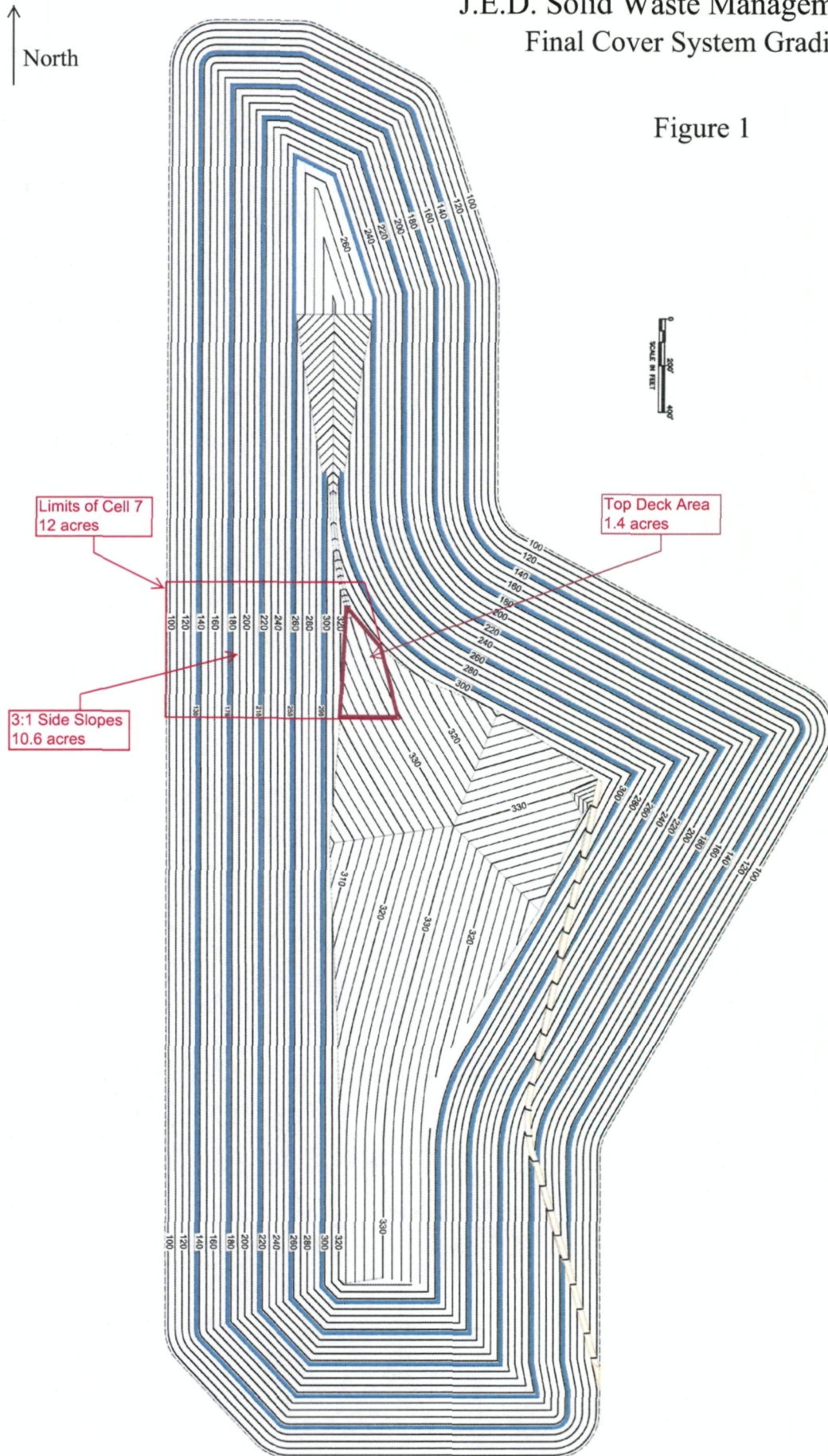
The closure and long-term care cost estimates for Cells 1 through 6, and Cell 7 at the JED facility are presented in the table below.

Cell Identification	Closure Cost Estimate	Long-Term Care Cost Estimate	Financial Assurance Cost Estimate
Cells 1 thru 6	\$4,763,710.72	\$6,852,232.06	\$11,615,942.78
Cell 7	\$1,186,530.60	\$552,418.68	\$1,738,949.28
Total	\$5,950,241.32	\$7,404,650.74	\$13,354,892.06

Omni will provide the FDEP with an insurance certificate for the revised financial assurance cost estimate of **\$13,354,892.06** upon verbal or written approval of this revised closure cost estimate.

J.E.D. Solid Waste Management Facility Final Cover System Grading Plan

Figure 1



V. ANNUAL COST FOR LONG-TERM CARE

See 62-701.600(1)a.1., 62-701.620(1), 62-701.630(3)a. and 62-701.730(11)b. F.A.C. for required term length. For landfills certified closed and Department accepted, enter the remaining long-term care length as "Other" and provide years remaining.

(Check Term Length) ☐ 5 Years ☐ 20 Years ☒ 30 Years ☐ Other, ___ Years

Notes: 1. Cost estimates must be certified by a professional engineer.

2. Cost estimates based on third party suppliers of material, equipment and labor at fair market value.

3. In some cases, a price quote in support of individual item estimates may be required.

All items must be addressed. Attach a detailed explanation for all entries left blank.

Description	Sampling Frequency (Events / Year)	Number of Wells	(Cost / Well) / Event	Annual Cost
1. Groundwater Monitoring [62-701.510(6), and (8)(a)]				
Monthly	12	_____	_____	_____
Quarterly	4	_____	_____	_____
Semi-Annually	2	_____	_____	_____
Annually	1	_____	_____	_____
Subtotal Groundwater Monitoring:				_____
2. Surface Water Monitoring [62-701.510(4), and (8)(b)]				
Monthly	12	_____	_____	_____
Quarterly	4	_____	_____	_____
Semi-Annually	2	_____	_____	_____
Annually	1	_____	_____	_____
Subtotal Surface Water Monitoring:				_____
3. Gas Monitoring [62-701.400(10)]				
Monthly	12	_____	_____	_____
Quarterly	4	_____	_____	_____
Semi-Annually	2	_____	_____	_____
Annually	1	_____	_____	_____
Subtotal Gas Monitoring:				_____
4. Leachate Monitoring [62-701.510(5), (6)(b) and 62-701.510(8)c]				
Monthly	12	_____	_____	_____
Quarterly	4	_____	_____	_____
Semi-Annually	2	_____	_____	_____
Annually	1	1	\$1,050.60	\$1,050.60
Other (explain) _____	_____	_____	_____	_____
Subtotal Leachate Monitoring:				\$1,050.60

Description	Unit	Number of Units / Year	Cost / Unit	Annual Cost
5. Leachate Collection/Treatment Systems Maintenance				
<u>Maintenance</u>				
Collection Pipes	LF	_____	_____	_____
Sumps, Traps	EA	1	\$508.98	\$508.98
Lift Stations	EA	_____	_____	_____
Cleaning	LS	1	\$1,197.68	\$1,197.68
Tanks	EA	_____	_____	_____

Description	Unit	Number of Units / Year	Cost / Unit	Annual Cost
5. (continued)				
<u>Impoundments</u>				
Liner Repair	SY	<u>1</u>	<u>\$105.06</u>	<u>\$105.06</u>
Sludge Removal	CY	<u> </u>	<u> </u>	<u> </u>
<u>Aeration Systems</u>				
Floating Aerators	EA	<u> </u>	<u> </u>	<u> </u>
Spray Aerators	EA	<u> </u>	<u> </u>	<u> </u>
<u>Disposal</u>				
Off-site (Includes transportation and disposal)	1000 gallon	<u>1</u>	<u>\$122.00</u>	<u>\$122.00</u>
Subtotal Leachate Collection / Treatment Systems Maintenance:				<u>\$1,933.72</u>
6. Groundwater Monitoring Well Maintenance				
Monitoring Wells	LF	<u> </u>	<u> </u>	<u> </u>
Replacement	EA	<u> </u>	<u> </u>	<u> </u>
Abandonment	EA	<u> </u>	<u> </u>	<u> </u>
Subtotal Groundwater Monitoring Well Maintenance:				<u> </u>
7. Gas System Maintenance				
Piping, Vents	LF	<u>25</u>	<u>\$25.76</u>	<u>\$644.00</u>
Blowers	EA	<u> </u>	<u> </u>	<u> </u>
Flaring Units	EA	<u> </u>	<u> </u>	<u> </u>
Meters, Valves	EA	<u> </u>	<u> </u>	<u> </u>
Compressors	EA	<u> </u>	<u> </u>	<u> </u>
Flame Arrestors	EA	<u> </u>	<u> </u>	<u> </u>
Operation	LS	<u>1</u>	<u>\$850.00</u>	<u>\$850.00</u>
Subtotal Gas System Maintenance:				<u>\$1,494.00</u>
8. Landscape Maintenance				
Mowing	AC	<u>12.5</u>	<u>\$500.00</u>	<u>\$6,250.00</u>
Fertilizer	AC	<u> </u>	<u> </u>	<u> </u>
Subtotal Landscape Maintenance:				<u>\$6,250.00</u>
9. Erosion Control and Cover Maintenance				
Sodding	SY	<u>100</u>	<u>\$1.79</u>	<u>\$179.00</u>
Regrading	AC	<u> </u>	<u> </u>	<u> </u>
Liner Repair	SY	<u>10</u>	<u>\$21.00</u>	<u>\$210.00</u>
Clay	CY	<u> </u>	<u> </u>	<u> </u>
Subtotal Erosion Control and Cover Maintenance:				<u>\$389.00</u>
10. Storm Water Management System Maintenance				
Conveyance Maintenance	LS	<u>1</u>	<u>\$1,000.00</u>	<u>\$1,000.00</u>
Subtotal Storm Water Management System Maintenance:				<u>\$1,000.00</u>
11. Security System Maintenance				
Fences	LS	<u>1</u>	<u> </u>	<u> </u>
Gate(s)	EA	<u> </u>	<u> </u>	<u> </u>
Sign(s)	EA	<u> </u>	<u> </u>	<u> </u>
Subtotal Security System Maintenance:				<u> </u>

Description	Unit	Number of Units / Year	Cost / Unit	Annual Cost
12. Utilities	LS	<u>1</u>	<u>\$2,521.44</u>	<u>\$2,521.44</u>
Subtotal Utilities:				<u>\$2,521.44</u>
13. Leachate Collection/Treatment Systems Operation				
<u>Operation</u>				
P.E. Supervisor	HR	<u> </u>	<u> </u>	<u> </u>
On-Site Engineer	HR	<u> </u>	<u> </u>	<u> </u>
Office Engineer	HR	<u> </u>	<u> </u>	<u> </u>
OnSite Technician	HR	<u> </u>	<u> </u>	<u> </u>
Materials	LS	<u>1</u>	<u> </u>	<u> </u>
Subtotal Leachate Collection/Treatment Systems Operation:				<u> </u>
14. Administrative				
P.E. Supervisor	HR	<u> </u>	<u> </u>	<u> </u>
On-Site Engineer	HR	<u> </u>	<u> </u>	<u> </u>
Office Engineer	HR	<u> </u>	<u> </u>	<u> </u>
OnSite Technician	HR	<u> </u>	<u> </u>	<u> </u>
Other <u> </u>	YR	<u>1</u>	<u>\$2,101.20</u>	<u>\$2,101.20</u>
Subtotal Administrative:				<u>\$2,101.20</u>
<u>See attached notes</u>				
Subtotal of 1-14 Above:				<u>\$16,739.96</u>
15. Contingency	<u>10</u>	% of Subtotal of 1-14 Above		<u>\$1,674.00</u>
Subtotal Contingency:				<u>\$1,674.00</u>

Description	Unit	Number of Units / Year	Cost / Unit	Annual Cost
16. Site Specific Costs				
<u> </u>	<u> </u>	<u> </u>	<u> </u>	<u> </u>
<u> </u>	<u> </u>	<u> </u>	<u> </u>	<u> </u>
<u> </u>	<u> </u>	<u> </u>	<u> </u>	<u> </u>
Subtotal Site Specific Costs:				<u> </u>

ANNUAL LONG-TERM CARE COST (\$ / YEAR): \$18,413.96

Number of Years of Long-Term Care: 30

TOTAL LONG-TERM CARE COST (\$): \$552,418.68

Written by: **Kirk Wills** Date: **Sept 2010**
Rev 1 Oct 2010 Reviewed by: **Ken Cargill** Date: **Sept 2010**
Rev 1 Oct 2010

Client: **Omni Waste of**
Osceola County, Project: **Financial**
LLC **Assurance** Project No.: **Cell 7** Task No.: **05**

5. Leachate Collection/Treatment System Maintenance

For the long term care cost estimate, the following maintenance activities have been assumed:

Leachate collection pipes: Assumed that one cleaning every 10 years within the 30-year monitoring period will be required for Cell 7 (total of 3 cleanings). $(\$11,976.84 \times 3) / 30$ years = **\$1,197.68/year**.

Leachate pumps: Assumed that pumps require annual maintenance and Cell 7 will require a replacement pump during the 30-year monitoring period:

- Annual maintenance = \$298.86/year
- Leachate pump replacement cost = $\$6,303.60 / 30 \text{ years} = \$210.12/\text{year}$
- Total estimated annual cost for pumps = **\$508.98/year**

Leachate storage containers: Long term care for the leachate storage containers assumes that three of the four bladders will require replacement over the 30-year monitoring period. Replacement cost has been assumed to be \$10,506 per flexible bladder. Total long-term care cost for the three bladder replacement was split based on number of cells (i.e. 10 cells) to estimate the Cell 7 long-term care cost for leachate storage containers.

- $3 \text{ bladders} \times \$10,506/\text{bladder} / 30 \text{ years} \times (1/10) = \mathbf{\$105.06/\text{year}}$

Leachate disposal: Leachate generation rate after closure was assumed to be 20 percent of the annual average leachate generation rate for maximum waste height that was obtained from the HELP model Analysis (see Case 4 analyzed for maximum waste height of 220 ft in the calculation package entitled *Leachate Management System*).

- $24.63 \text{ cf/ac/year or } 184.3 \text{ gal/ac/year} \times 12 \text{ acres} \times 20 \text{ percent} = 442 \text{ gal/year}$
→ use minimum unit of 1,000 gallons as shown on FDEP form 1,000 gallons/year $\times \$0.122/\text{gallon for transportation and treatment} = \mathbf{\$122/\text{year}}$.

Therefore, total long-term care cost for leachate system maintenance = **\$1,933.72/year**.

Written by: **Kirk Wills** Date: **Sept 2010** Reviewed by: **Ken Cargill** Date: **Sept 2010**
Rev 1 Oct 2010 Rev 1 Oct 2010

Client: **Omni Waste of**
Osceola County, Project: **Financial** Project No.: **Cell 7** Task No.: **05**
LLC **Assurance**

12. Utilities

The long-term care cost estimate for Phases 1 through 3 assumes that the power requirements for site equipment (i.e., pumps, lights, blowers, etc.) will cost \$2,101.20 per month. The total utility cost for Phases 1 through 3 is split based on number of cells (i.e. 10 cells) to estimate the utility cost for Cell 7:

- $\$2,101.20/\text{month} \times 12 \text{ months} \times (1/10) = \underline{\$2,521.44/\text{year}}.$

13. Leachate Collection/Treatment Systems Operation

The long-term care costs for the leachate collection/treatment system operation was include in the previously approved financial assurance cost estimate. Therefore, no additional cost is included as part of the long-term care cost for Cell 7.

14. Administrative

The long-term care cost estimate assumes that the administrative costs for Phases 1 through 3 to be \$21,012/year. The total administrative cost for Phases 1 through 3 is split based on number of cells (i.e. 10 cells) to estimate the administrative cost for Cell 7:

- $\$21,012/\text{year} \times (1/10) = \$2,101.20/\text{year}$

15. Contingency

Assuming a contingency of 10 % of total long-term annual care cost

ANNUAL LONG-TERM CARE COST: \$18,413.96

TOTAL LONG-TERM CARE COST (30 years): \$552,418.68